

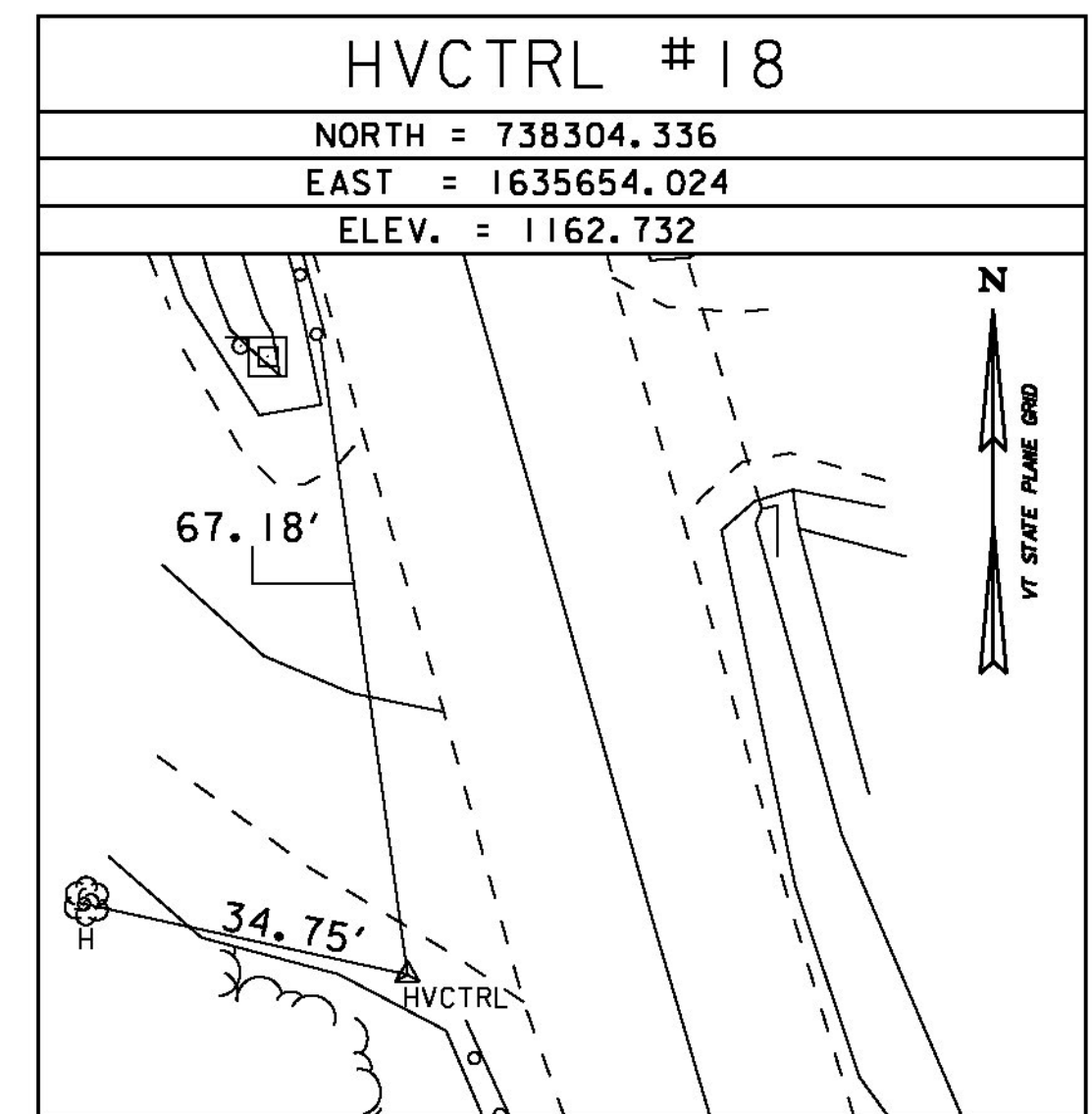
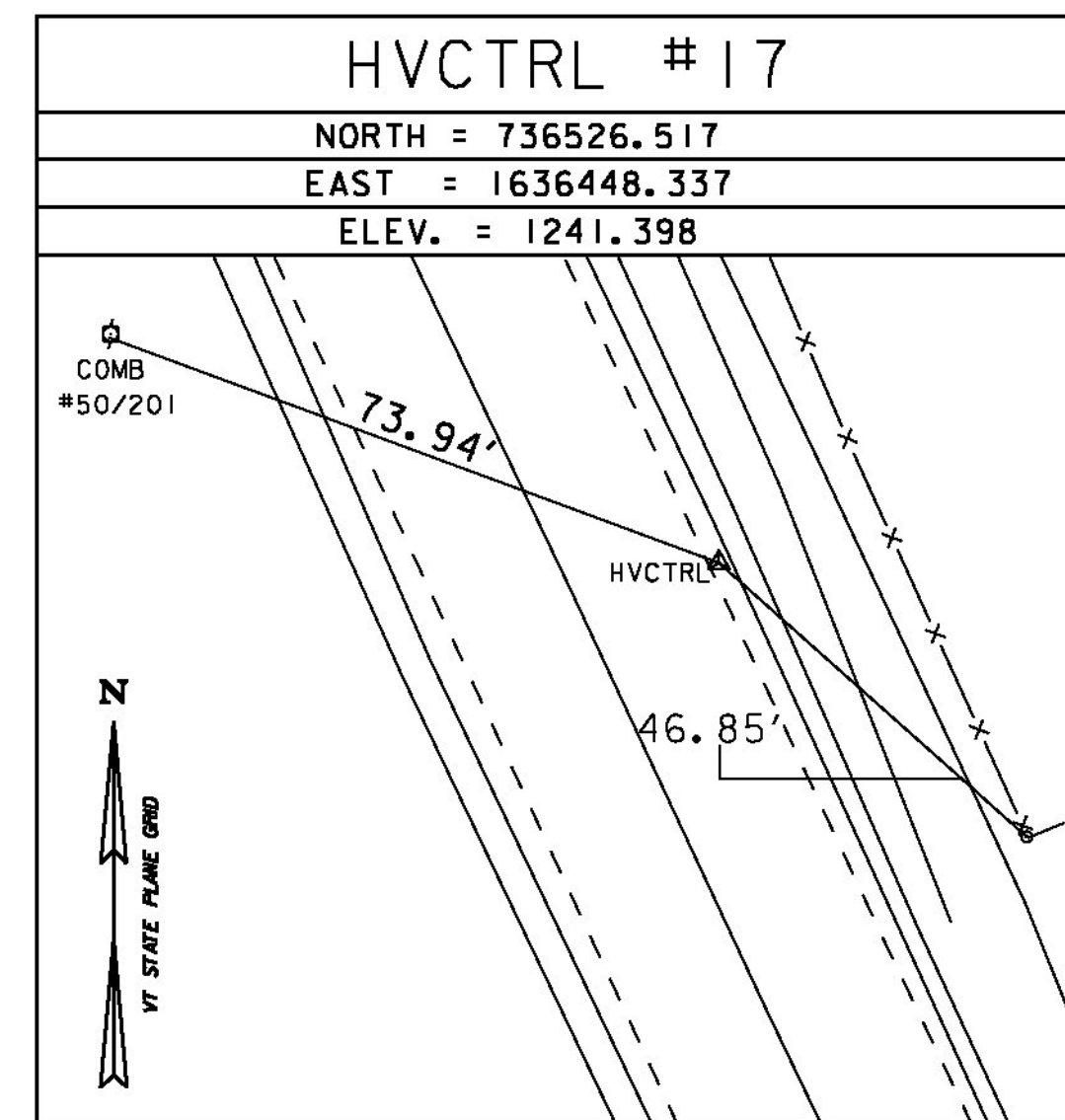
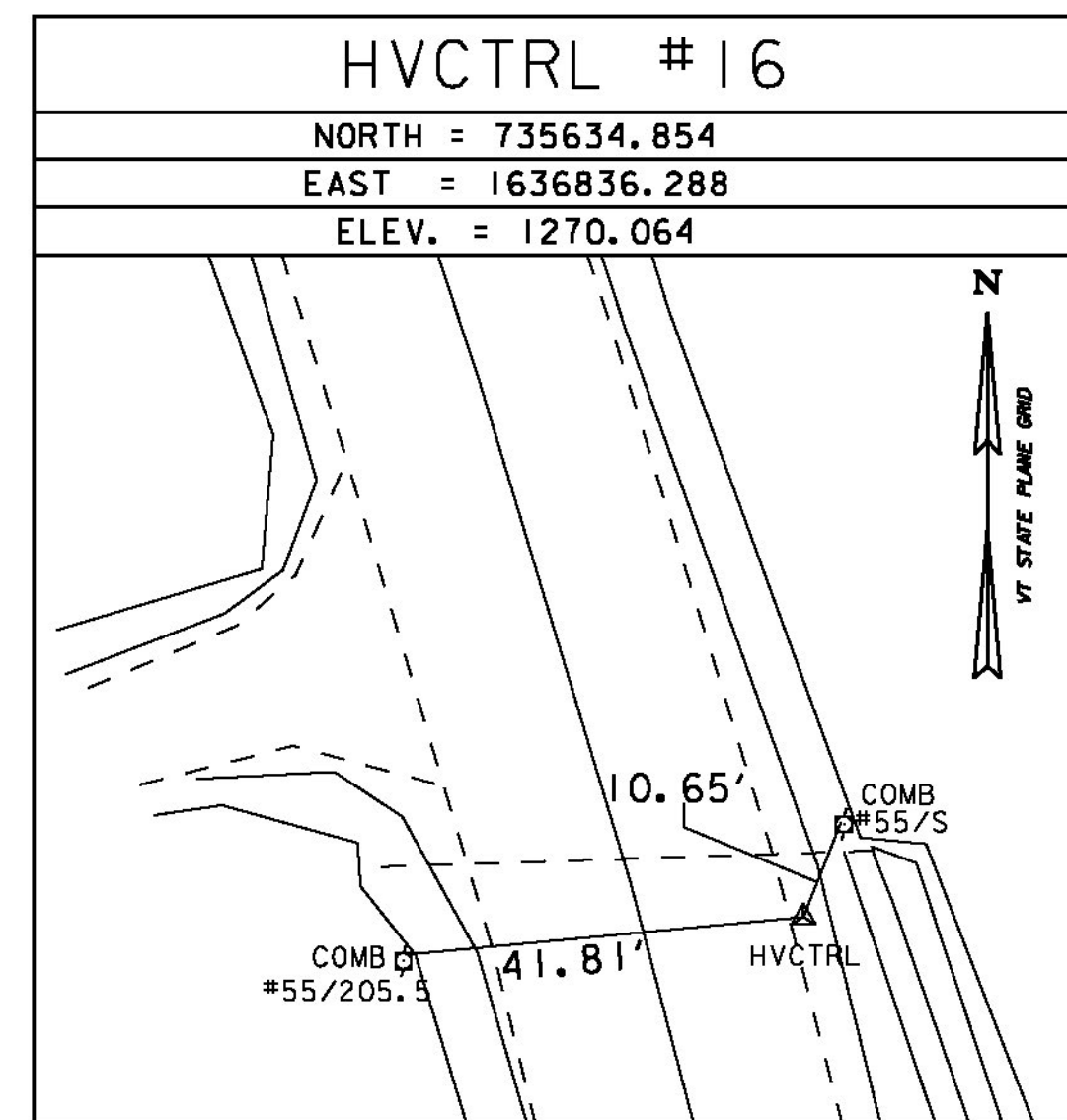
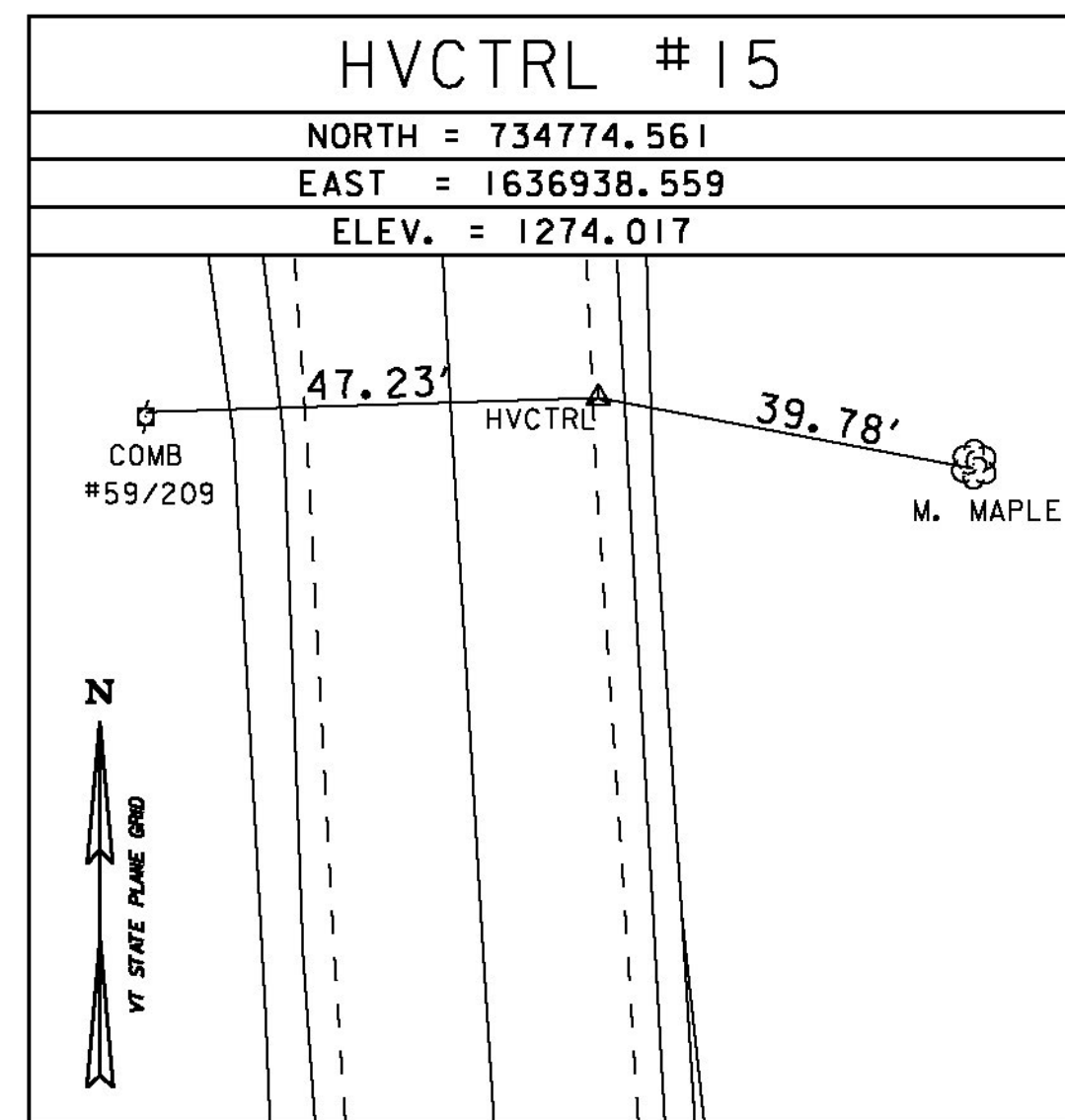
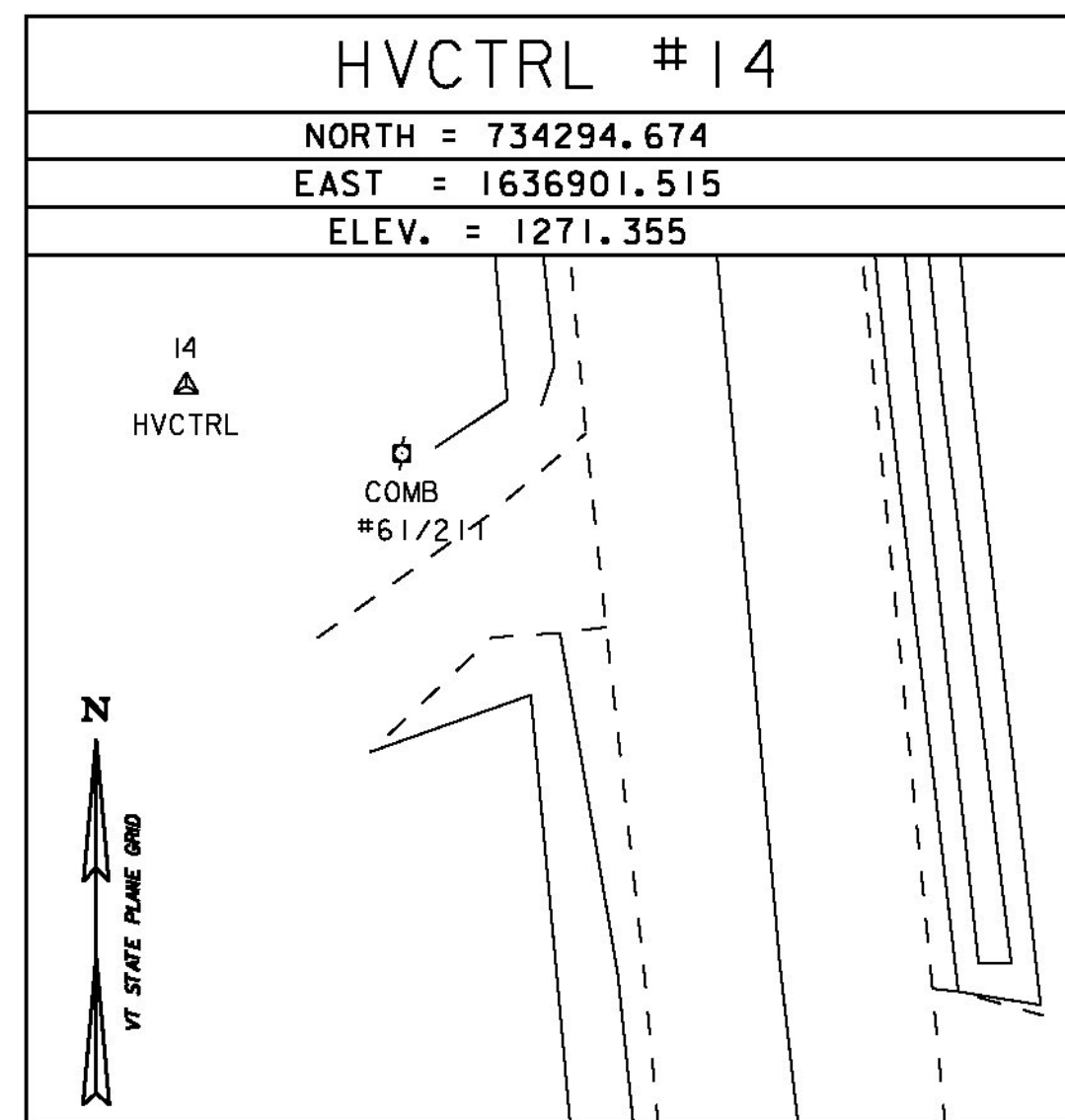
GPS CONTROL POINTS

--- 14_HBC ---
 NORTH = 734294.674
 EAST = 1636901.515
 ELEV. = 1271.355

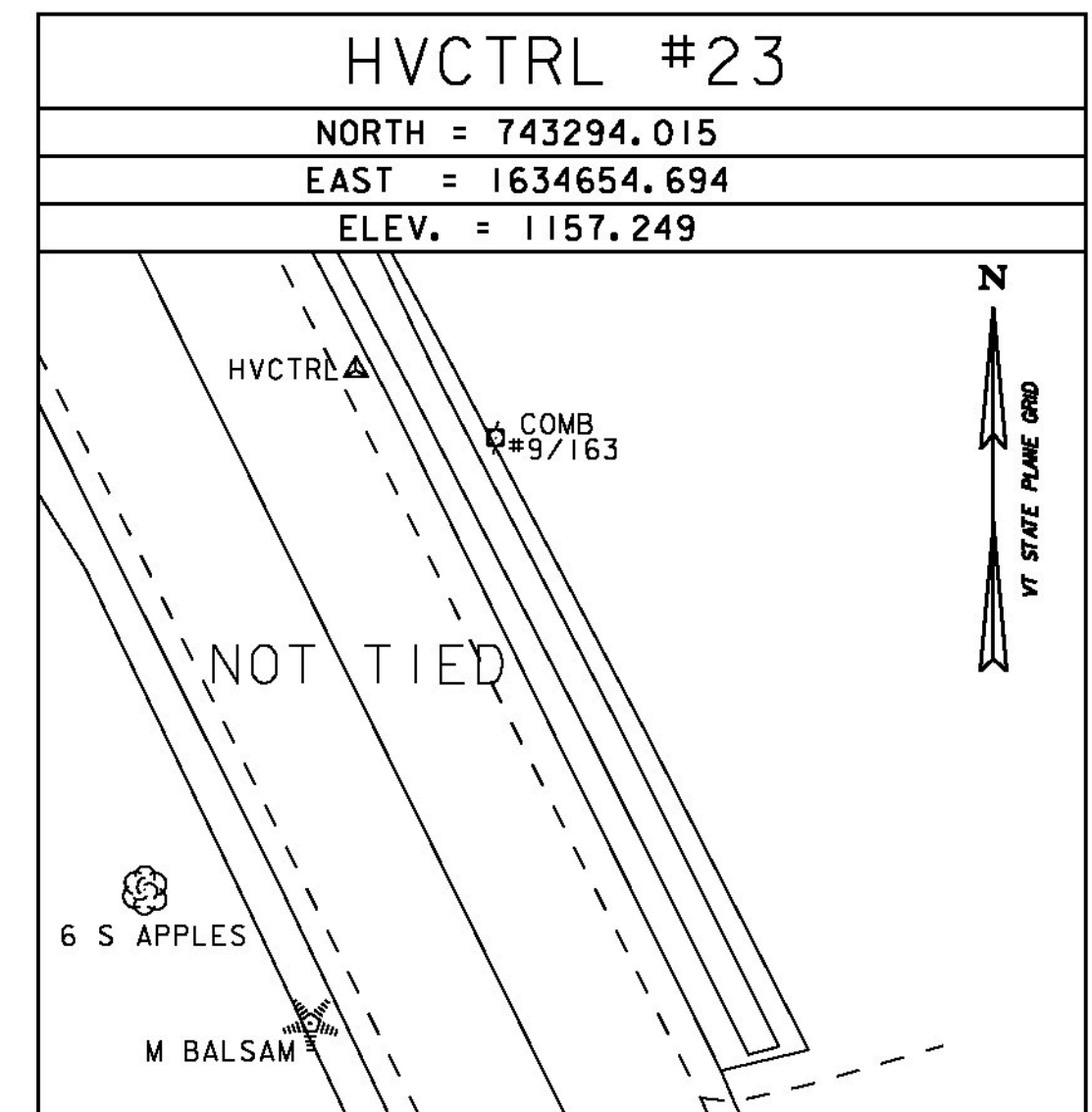
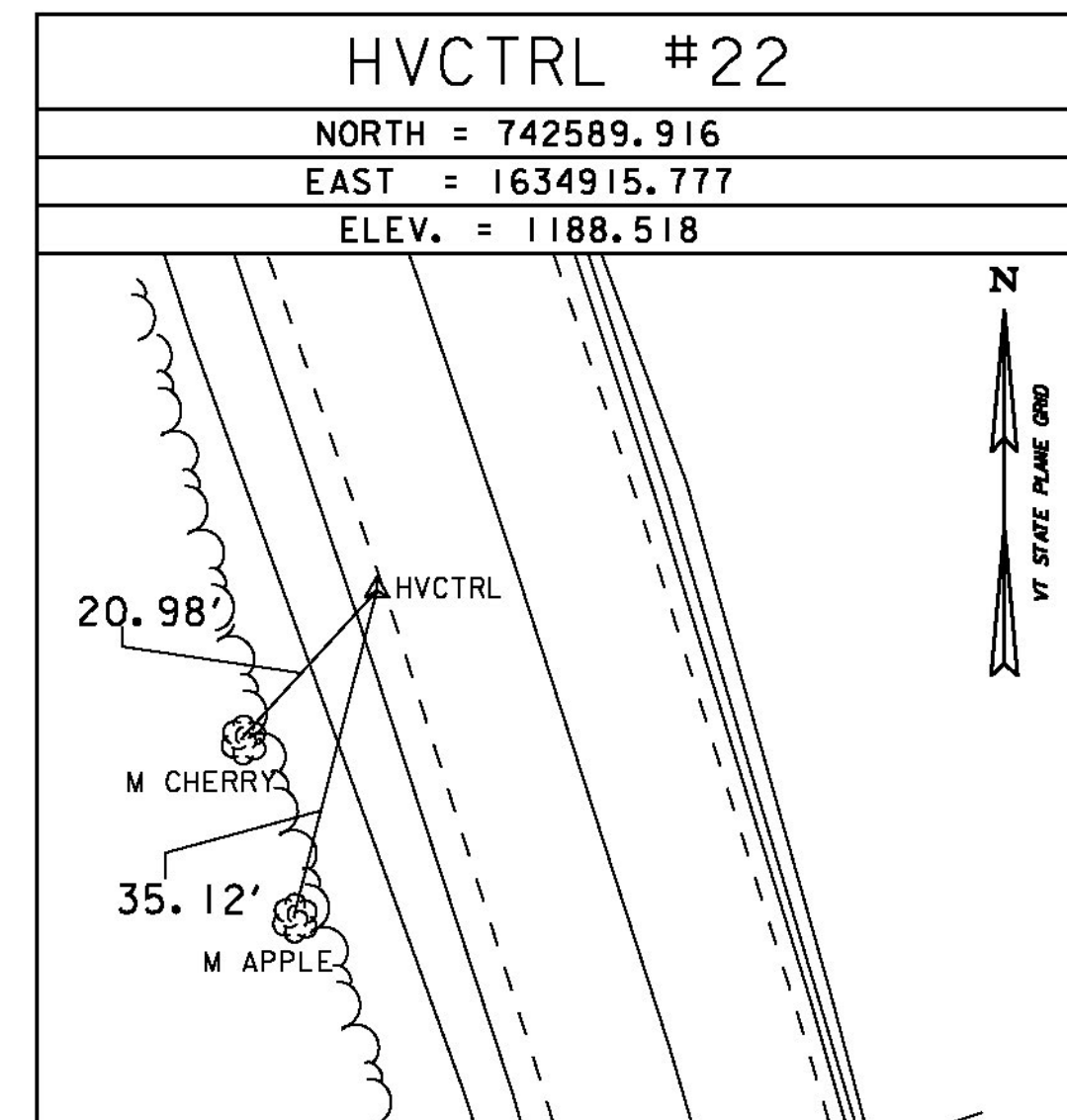
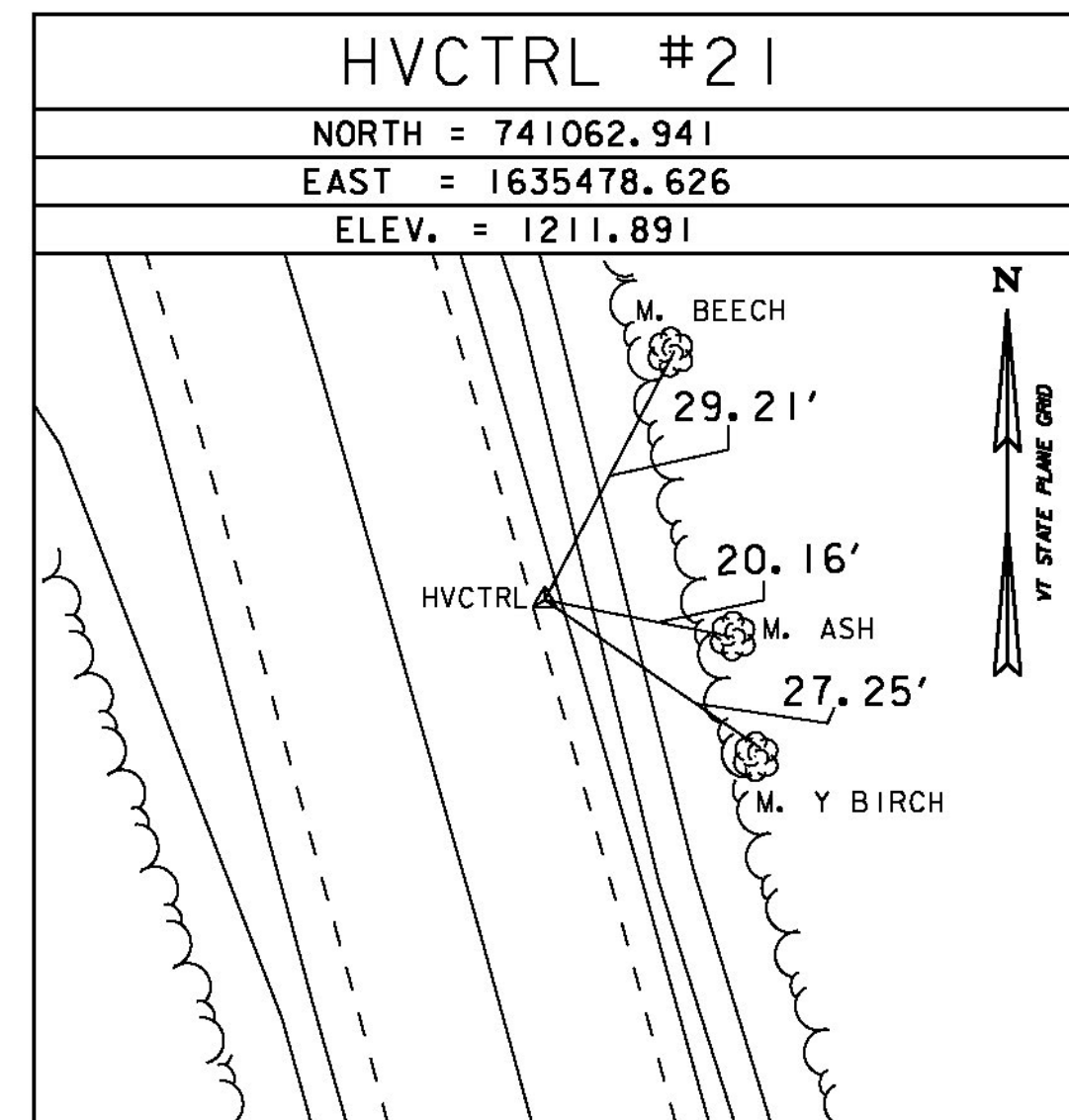
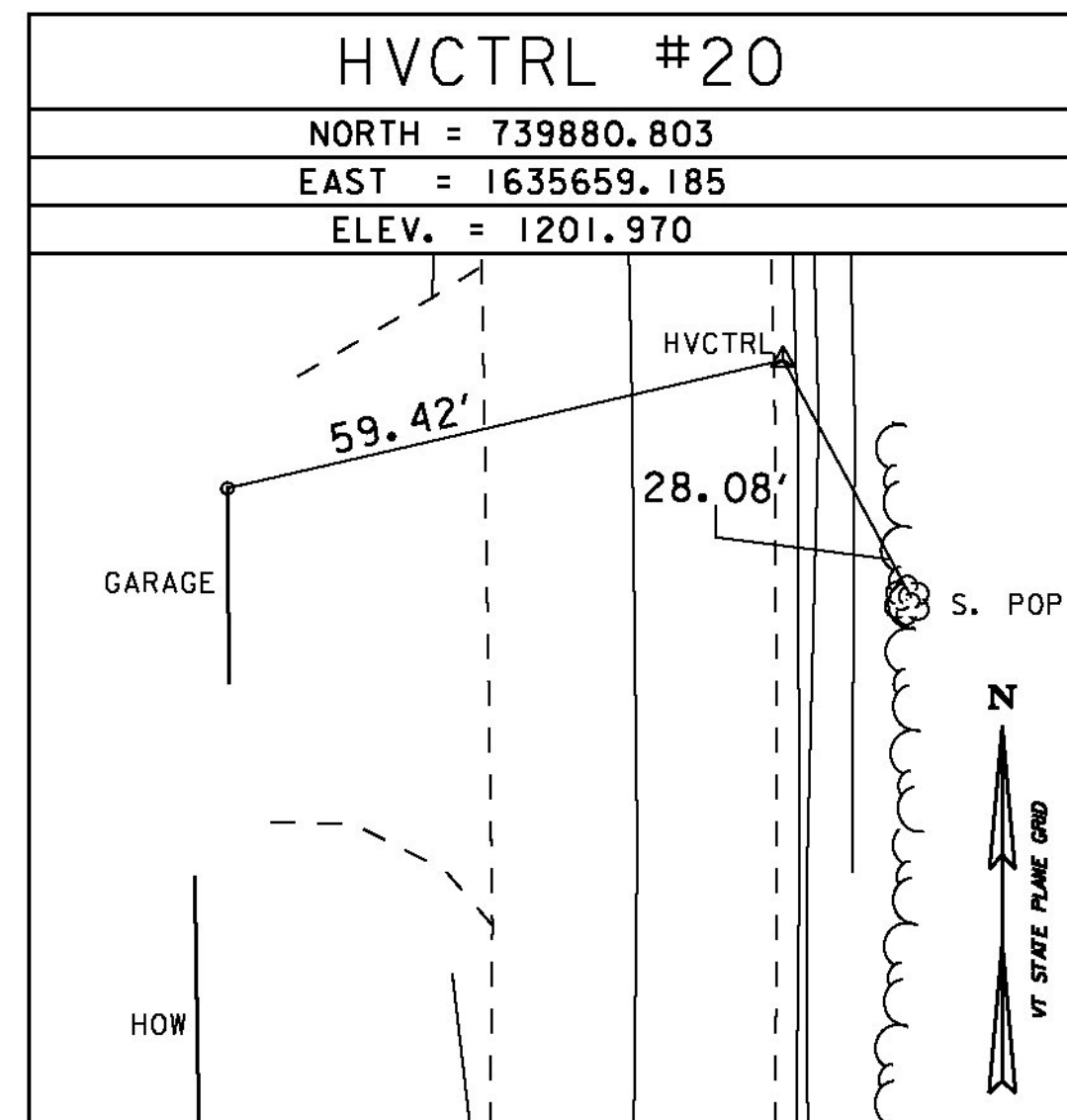
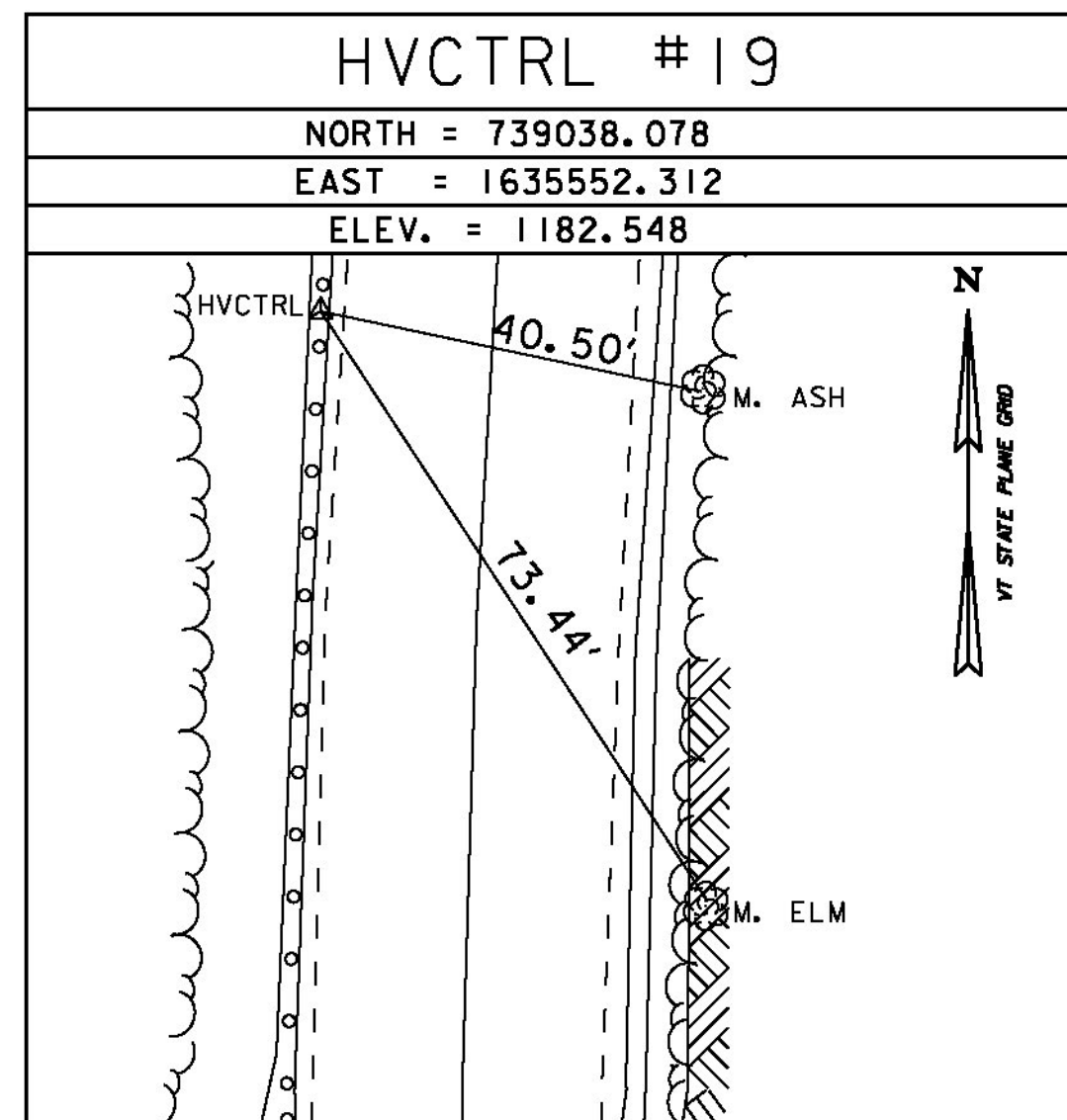
GENERAL LOCATION, ELMORE, VT.

TO REACH FROM THE INTERSECTION OF VT ROUTE 15C AND VT ROUTE 12 IN MORRISVILLE, GO SOUTH ALONG VT ROUTE 12 FOR 4.2 MI (6.8 KM) TO THE INTERSECTION OF BEACH ROAD RIGHT AT THE NORTH END OF LAKE ELMORE. CONTINUE SOUTH ALONG VT ROUTE 12 FOR 2.0 MI (3.2 KM) TO THE SITE OF THE MARK ON THE RIGHT ON THE EAST EDGE OF A LARGE FIELD, THE MARK IS SET IN THE SOUTH END OF A MASSIVE ROCK OUTCROP PROJECTING 2.0 M (6.6 FT) ABOVE GROUND SURFACE ON THE WEST SIDE. IT IS 17.4 M (57.1 FT) WEST OF AND ABOUT 0.5 M (1.6 FT) LOWER THAN THE CENTERLINE OF VT ROUTE 12, 6.9 M (22.6 FT) NORTH-NORTHWEST OF POLE NO 61/211, 3.2 M (10.5 FT) NORTHEAST OF A GUY ANCHOR AND 72.8 M (238.8 FT) SOUTH-SOUTHWEST OF POLE NO 60.

TRAVERSE TIES



TRAVERSE TIES



DATUM	
VERTICAL	NAVD 88
HORIZONTAL	NAD 83 (2011)
ADJUSTMENT	COMPASS

TIE SHEET 2	PROJECT NAME: ELMORE-MORRISTOWN
	PROJECT NUMBER: STP 2937 (1)
	FILE NAME: z11c310.dgn
	PROJECT LEADER: C. LATHROP
DESIGNED BY: S. LAMPHERE	PLOT DATE: 3/3/14
PLOT FILE: z11c310.4.i	DRAWN BY: R. BULLOCK
	CHECKED BY: C. LATHROP
	SHEET 4 OF 194