

GPS CONTROL POINTS

--- LVT ---
 NORTH = 718091.400
 EAST = 1631814.670
 ELEV. = 1219.000

STATION RECOVERY (2012)
 RECOVERY NOTE BY VERMONT GEODETIC SURVEY 2012 (MJA)

GENERAL LOCATION, ELMORE, VT

TO REACH FROM THE INTERSECTION OF VT ROUTE 15A (UPPER MAIN STREET) AND VT ROUTE 12 IN MORRISVILLE GO SOUTH ALONG VT ROUTE 12 FOR 4.3 MI (6.9KM) TO THE ELMORE STATE PARK ENTRANCE ON THE RIGHT, CONTINUE STRAIGHT AHEAD AND GO SOUTH ALONG VT ROUTE 12 FOR 5.6 MI (9.0 KM) TO THE SITE OF THE MARK ON THE RIGHT, TO REACH FROM THE INTERSECTION OF VT ROUTE 12 AND CALAIS ROAD IN WORCESTER GO NORTH ALONG VT ROUTE 12 FOR 7.9 MI (12.7 KM) TO THE SITE OF THE MARK. THE MARK IS A BLANK DISK SET 30 CM (12 INCHES) BELOW GROUND SURFACE IN THE TOP OF A DRIVEN STEEL PIPE. IT IS BEHIND A STEEL BEAM GUARD RAIL AND ABOUT 0.3 M (1.0 FT) SOUTHWEST OF THE CENTERLINE OF A 30 CM (12 INCH) DIAMETER STEEL CULVERT WITH A MARKER POST, 5.5 M (18.0 FT) NORTHWEST OF AND 0.4 M (1.3 FT) LOWER THAN THE CENTERLINE OF VT ROUTE 12, 5.4 M (17.7 FT) EAST OF A PAIR OF 12 CM (5 INCHES) PINES, 37.8 M (124.0 FT) SOUTHWEST OF THE POST AT THE NORTHEAST END OF THE GUARD RAIL AND 38.4 M (126.0 FT) WEST OF AND ACROSS THE ROAD FROM MILE MARKER 0120/0804/0160.

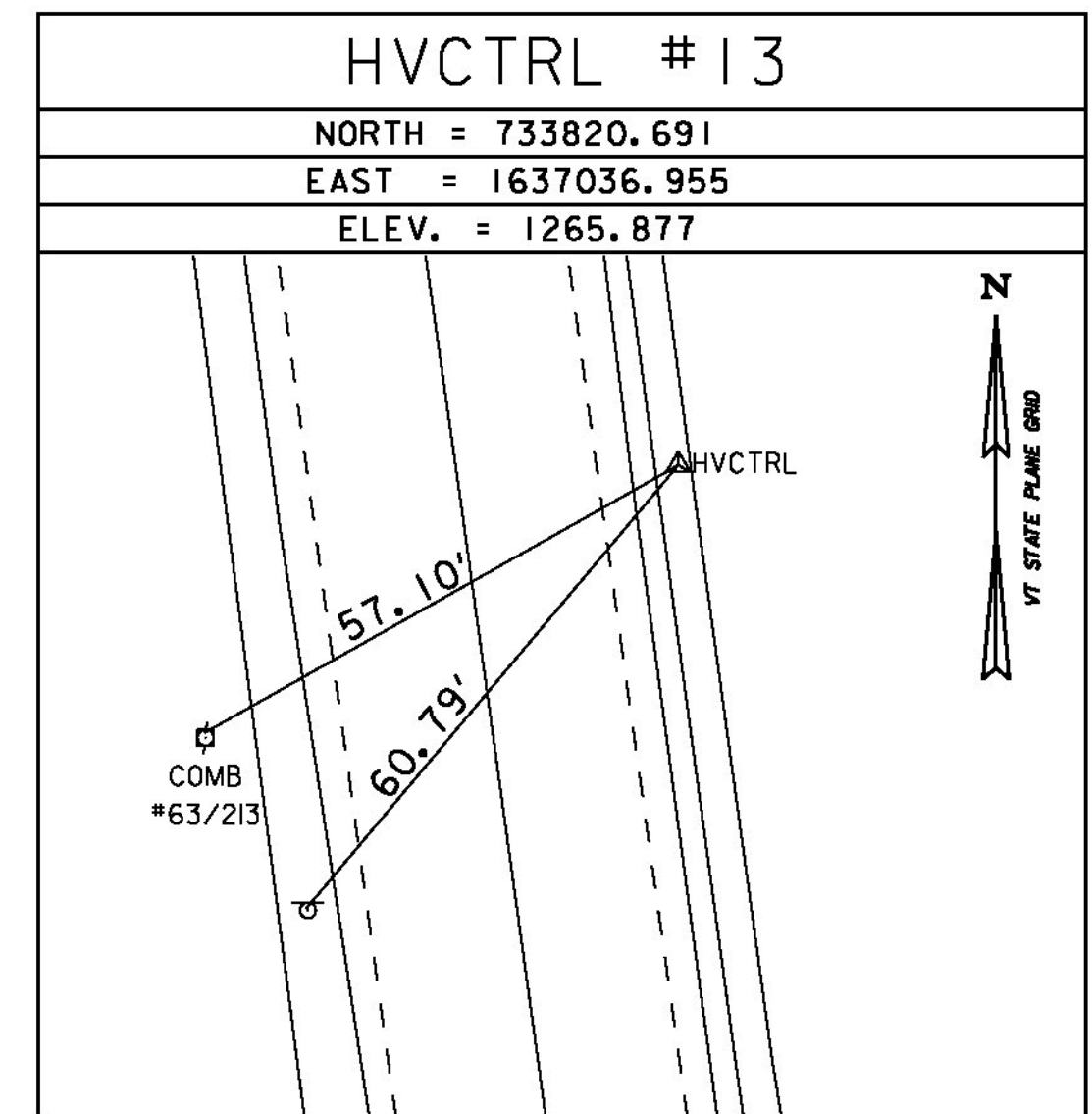
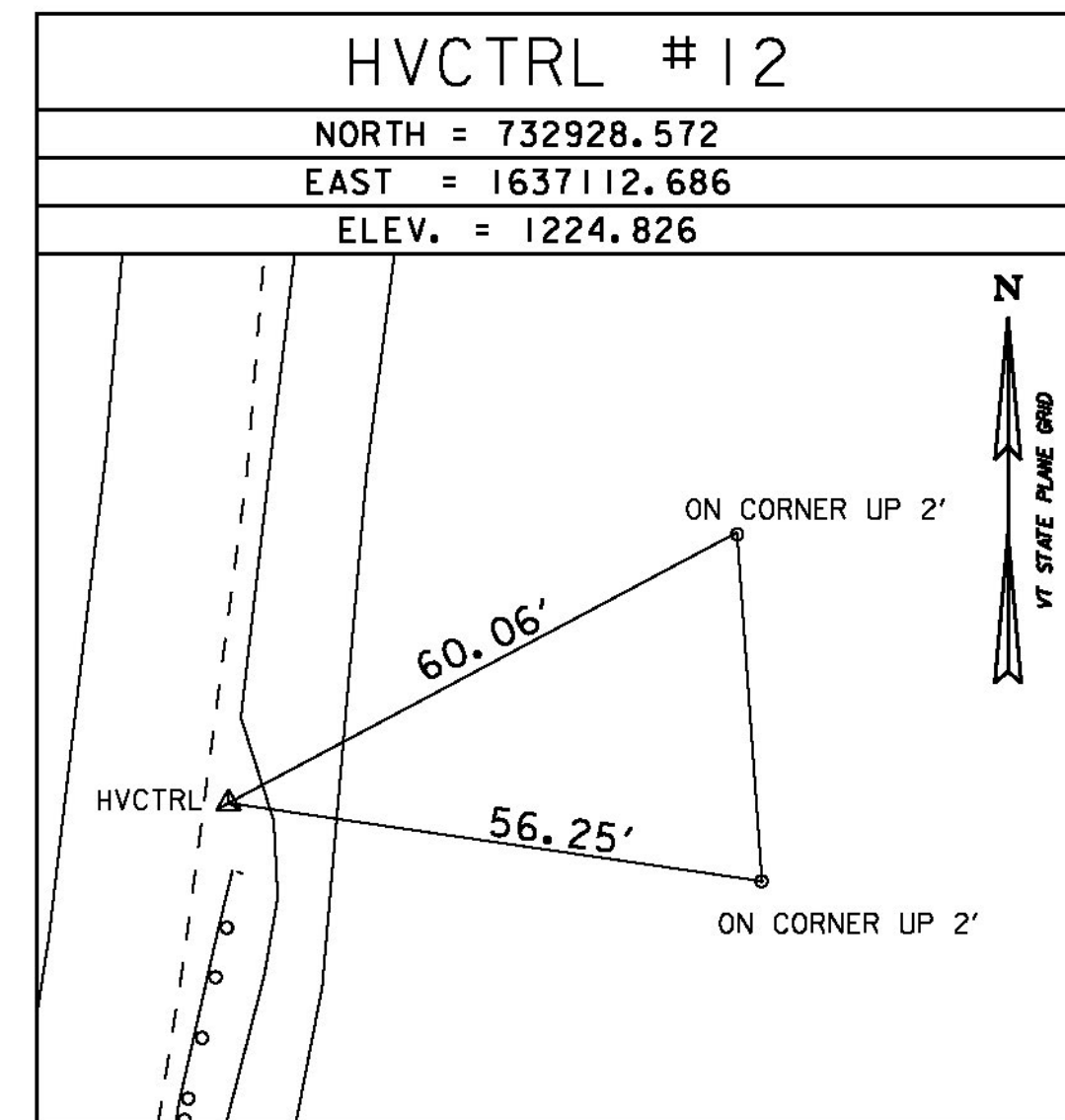
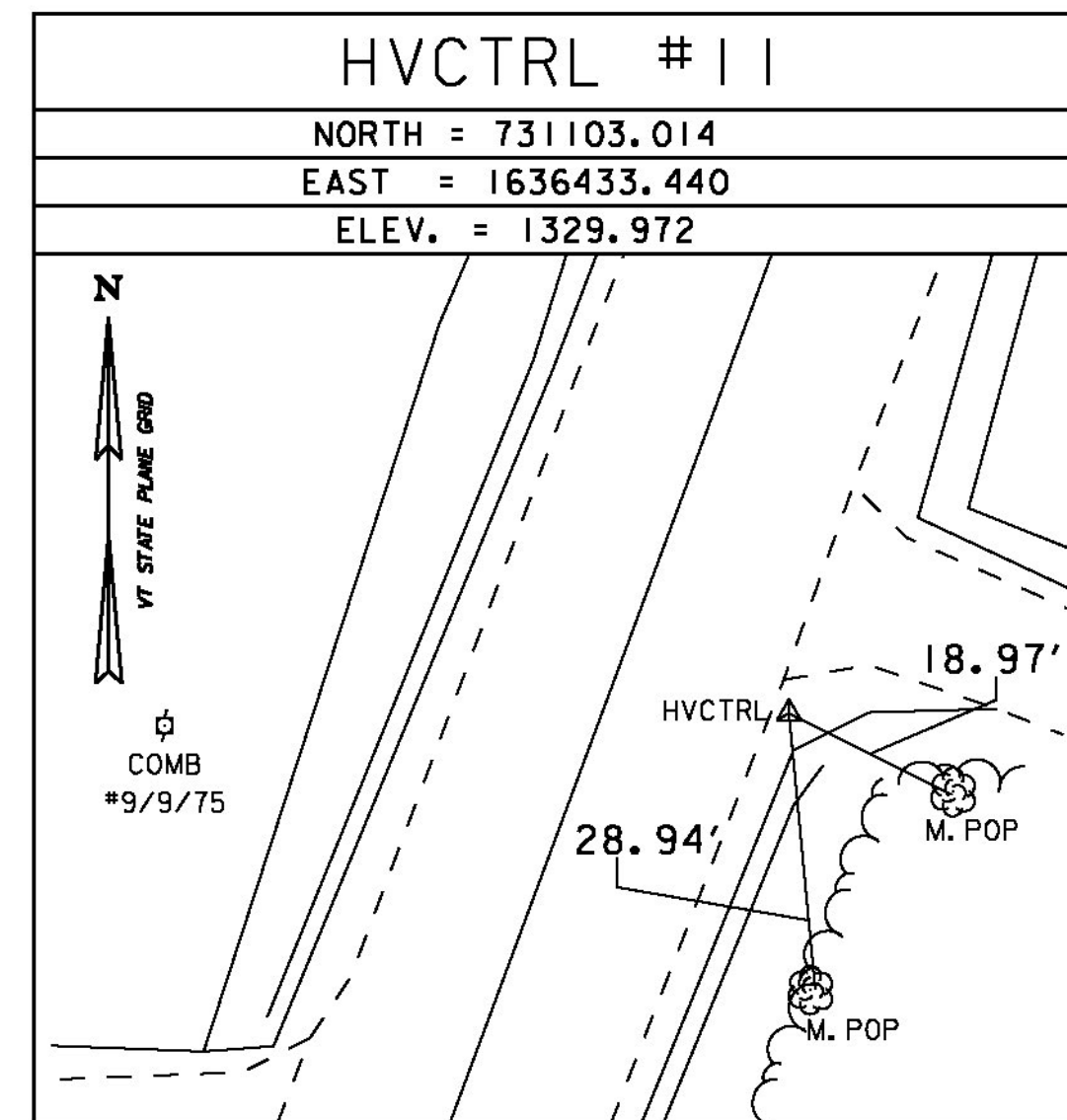
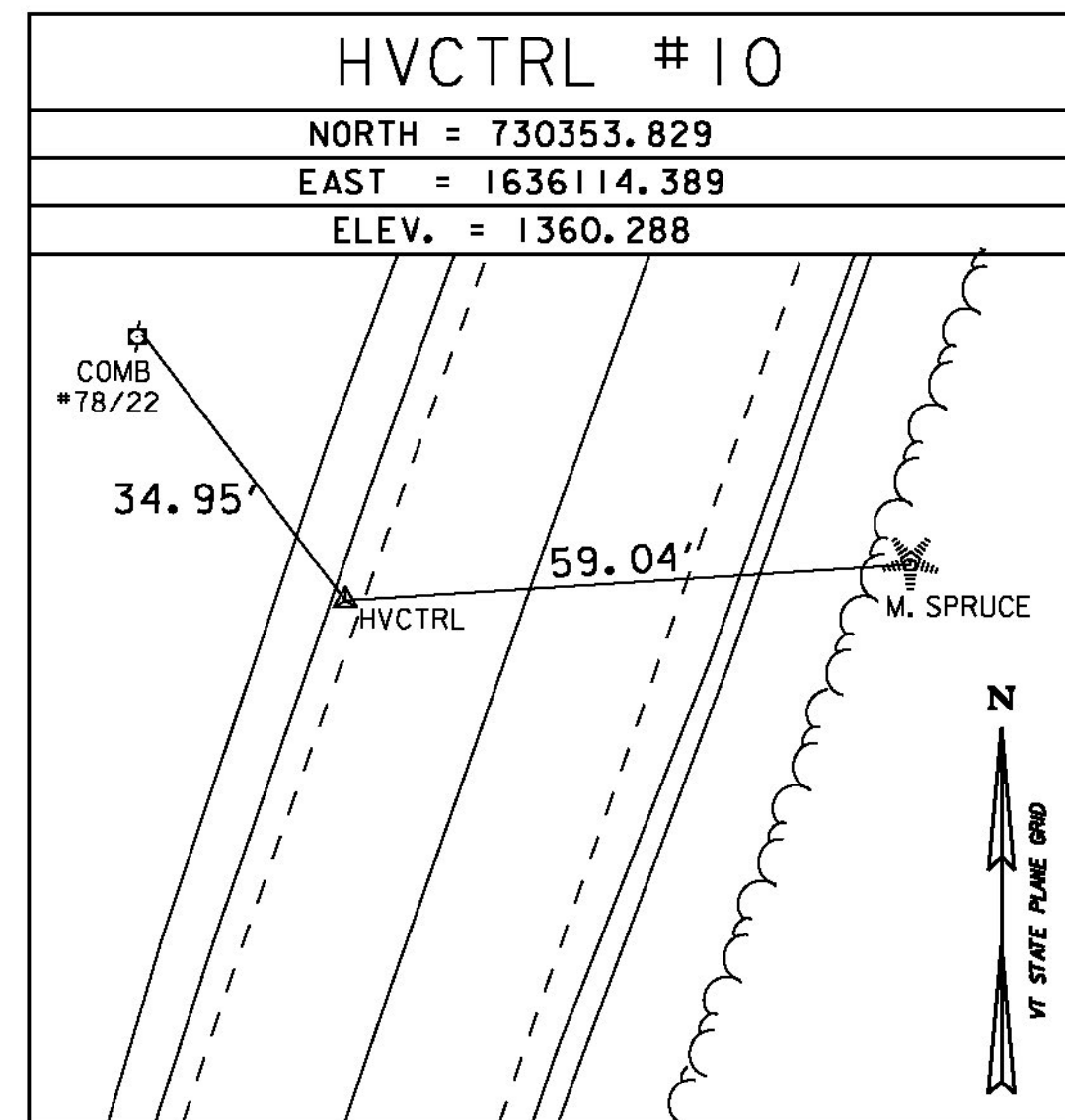
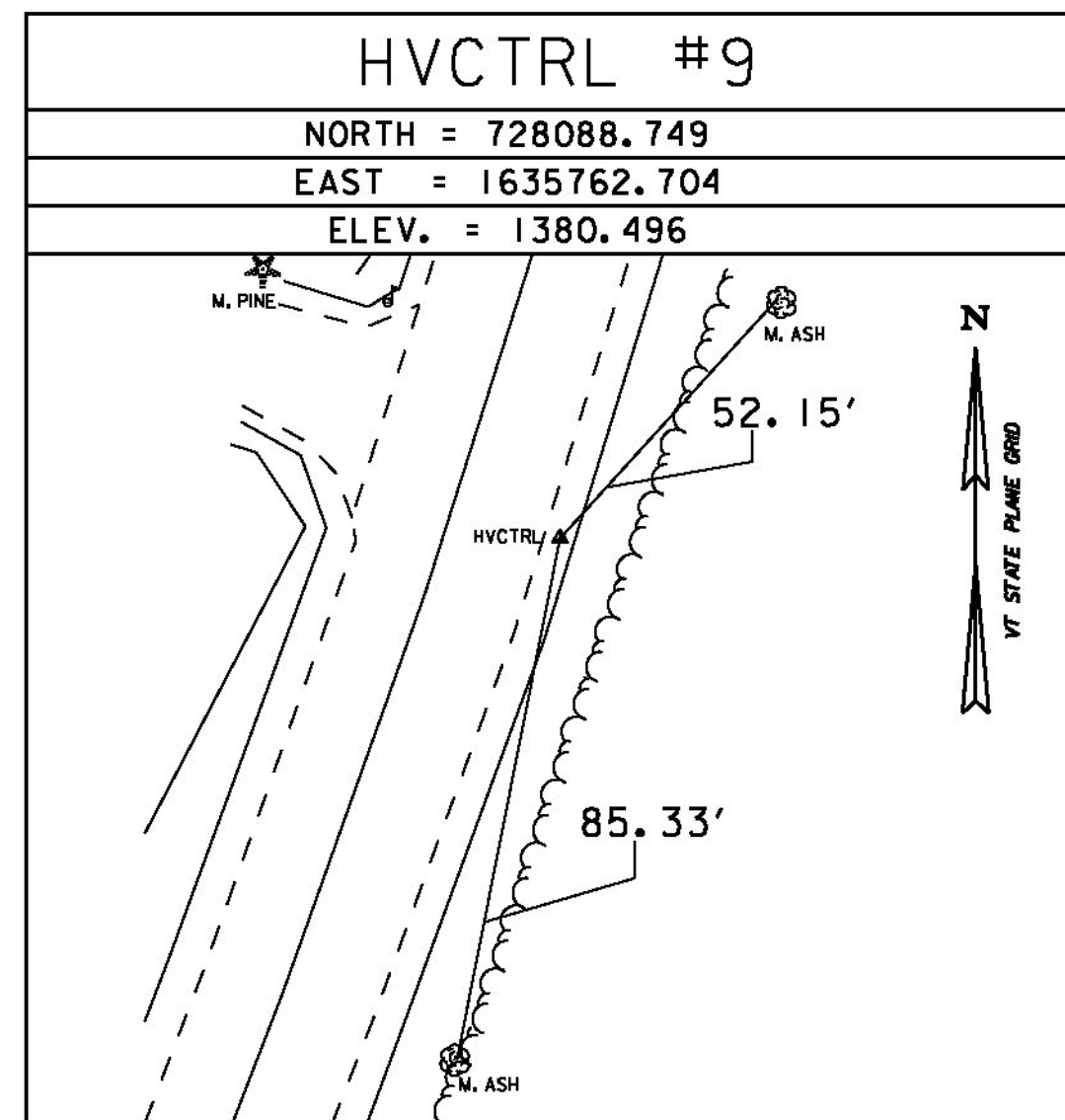
--- 17_HBC ---
 NORTH = 719093.556
 EAST = 1632341.29
 ELEV. = 1226.870

DESCRIBED BY VERMONT AGENCY OF TRANSPORTATION 1996 (DJM)

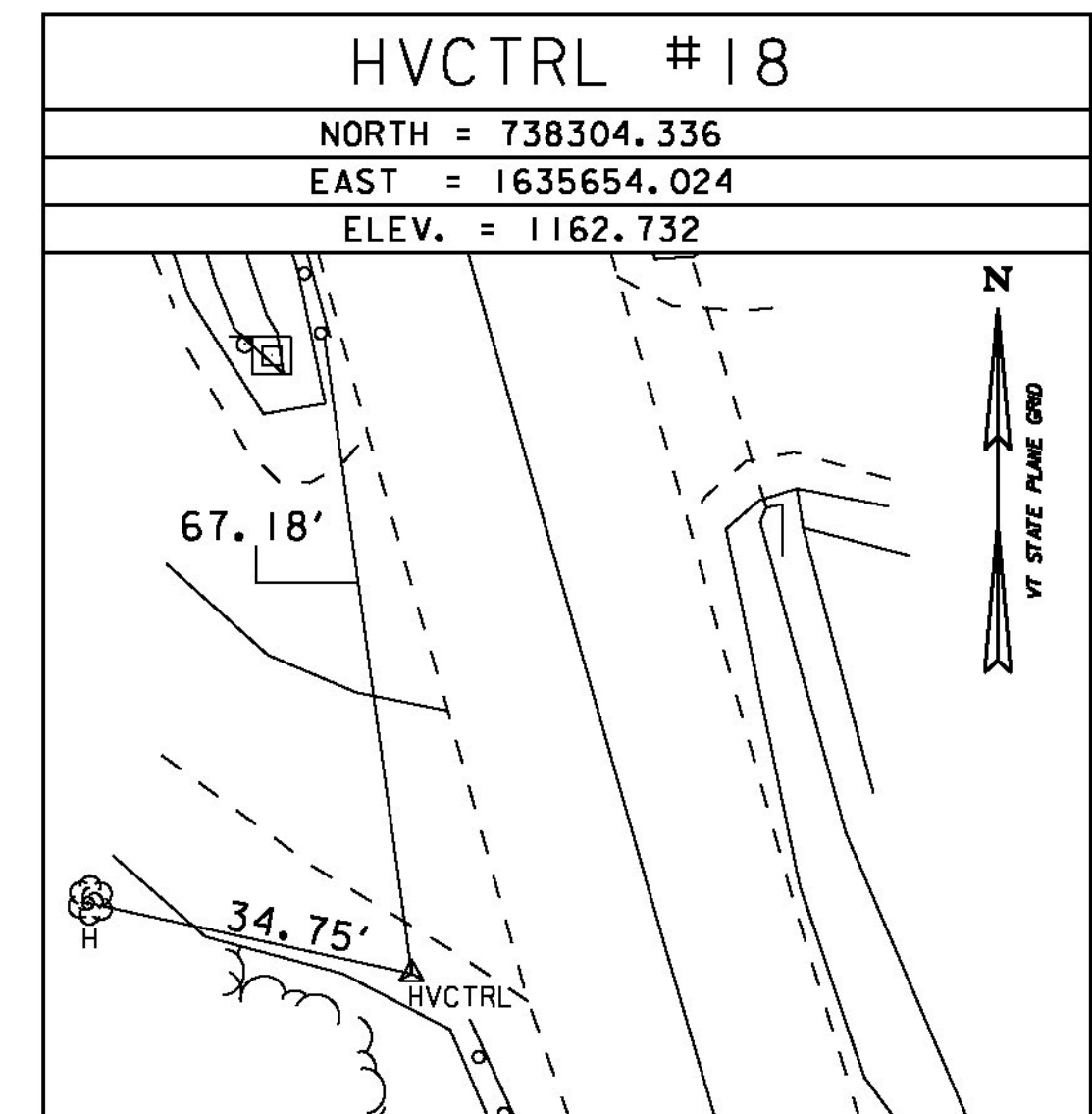
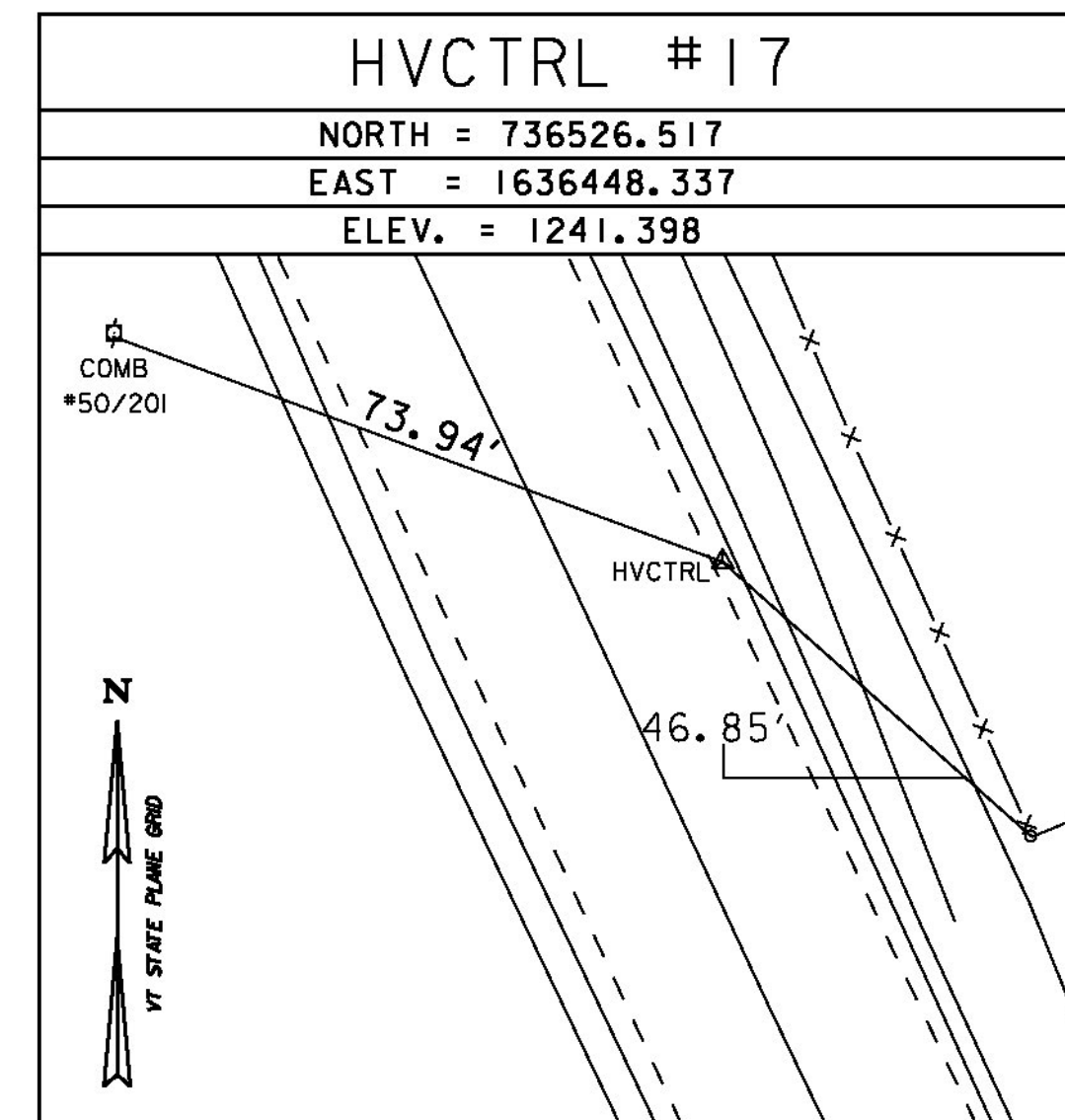
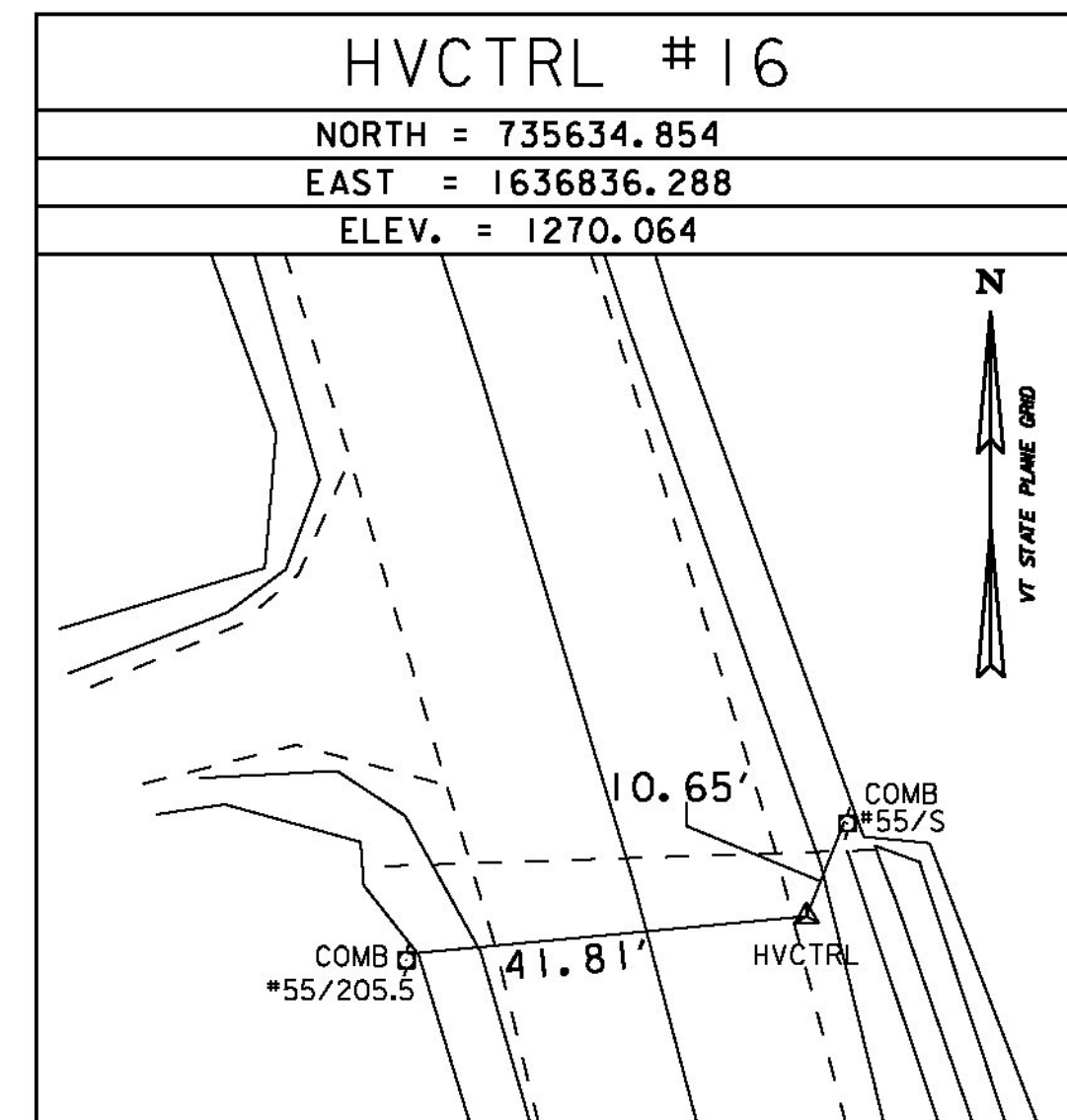
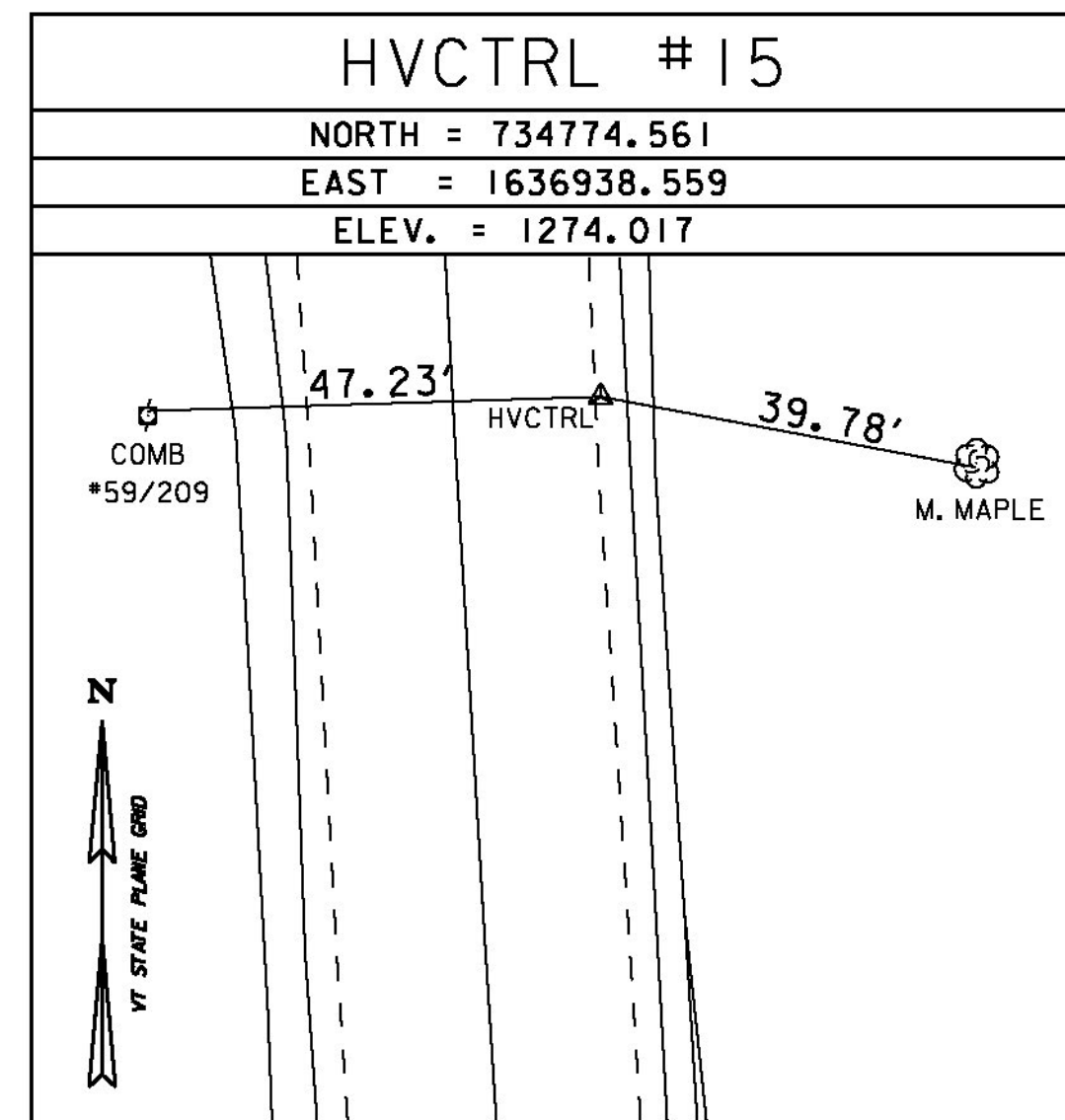
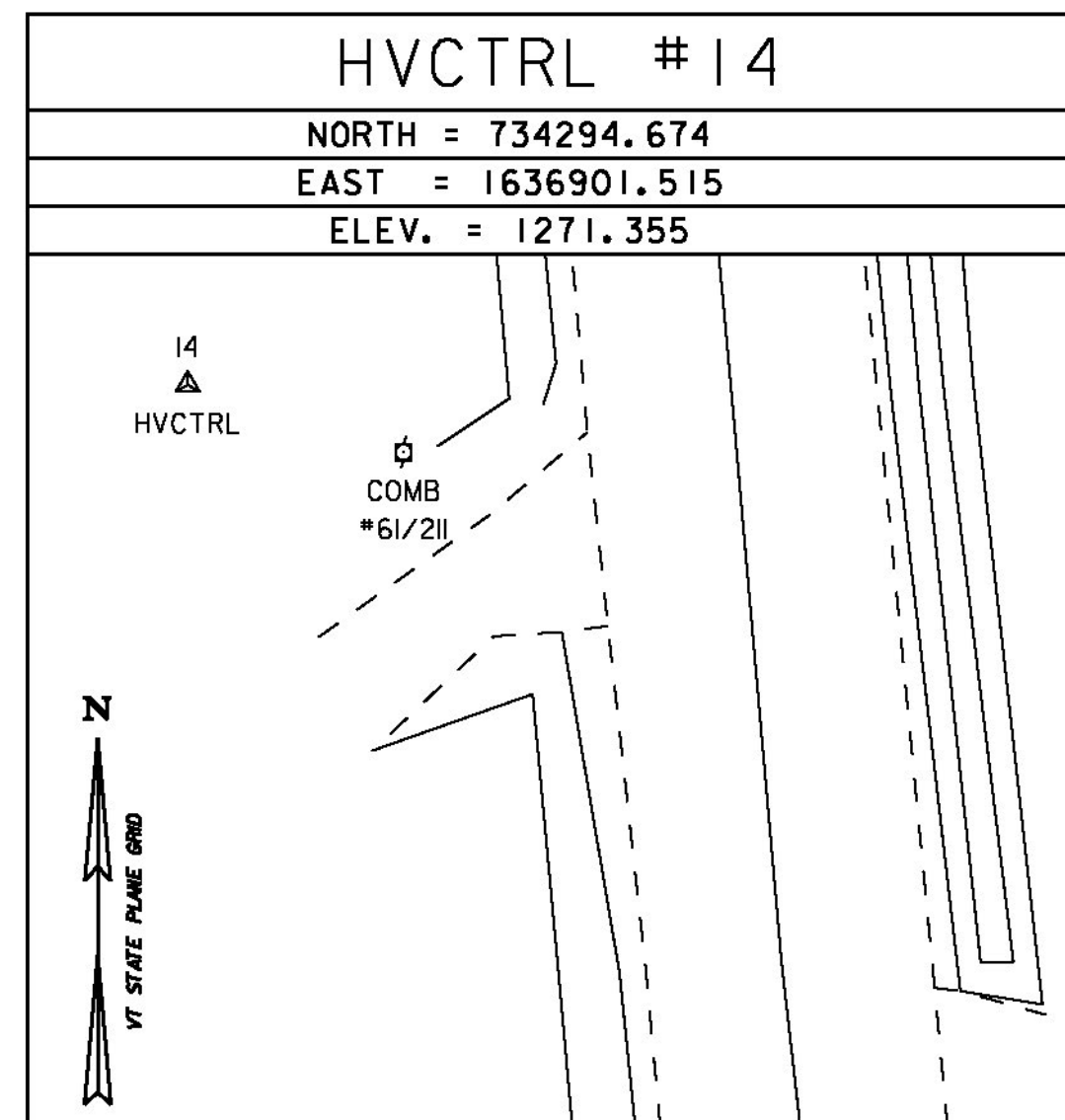
GENERAL LOCATION - THE STATION IS LOCATED IN THE TOWN OF ELMORE, 4.6 MI (7.4KM) SOUTH OF ELMORE VILLAGE, 7.1 MI (11.4 KM) SOUTH SOUTHEAST OF MORRISVILLE, AND 14.0 MI (22.5 KM) NORTH OF MONTPELIER. TO REACH FROM THE JUNCTION OF VERMONT ROUTE 12 AND THE ENTRANCE TO THE STATE PARK IN ELMORE, PROCEED SOUTH ON VERMONT ROUTE 12 FOR 5.4 MI (8.7 KM) TO THE BRIDGE OVER BARNES BROOK AND THE SITE OF THE MARK ON THE LEFT. TO REACH FROM THE JUNCTION OF VERMONT ROUTE 12 AND THE ROAD LEADING TO MAPLE CORNERS IN WORCESTER, PROCEED NORTH ON ROUTE 12 FOR 8.1 MI (13.0 KM) TO THE BRIDGE OVER BARNES BROOK AND THE SITE OF THE MARK ON THE RIGHT, THE MARK IS A USGS BENCHMARK DISK SET FLUSH IN THE CONCRETE BASE OF THE NORTH EAST RAIL OF THE BRIDGE. IT IS LOCATED 16 FT (4.9 M) SOUTHEAST OF THE CENTERLINE OF VERMONT ROUTE 12, 5 FT (1.5 M) NORTH OF A CONCRETE BRIDGE POST, 1 FT (0.3 M) SOUTHWEST OF A FIBERGLASS WITNESS POST, AND 0.5 FT (15.2 CM) EASTERLY FROM THE STEEL GUARD RAIL. OWNERSHIP IS THE STATE OF VERMONT.

STATION RECOVERY (2012)
 RECOVERY NOTE BY VERMONT GEODETIC SURVEY 2012 (BJH)
 RECOVERED AS DESCRIBED.

TRAVERSE TIES



TRAVERSE TIES



DATUM	
VERTICAL	NAVD 88
HORIZONTAL	NAD 83 (2011)
ADJUSTMENT	COMPASS

TIE SHEET 1

PROJECT NAME:	ELMORE-MORRISTOWN	
PROJECT NUMBER:	STP 2937 (1)	
FILE NAME:	z11c310.dgn	PLOT DATE: 3/3/14
PROJECT LEADER:	C. LATHROP	DRAWN BY: R. BULLOCK
DESIGNED BY:	S. LAMPHERE	CHECKED BY: C. LATHROP
PLOT FILE:	z11c310.3.i	SHEET 3 OF 194