

Vermont Agency of Transportation

RECEIVED

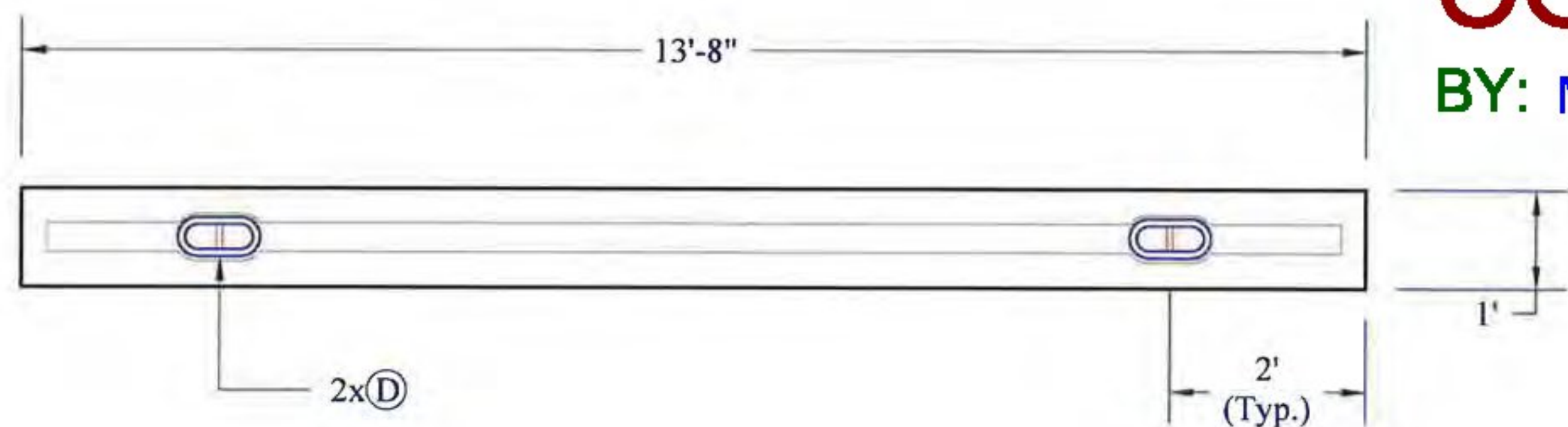
ON: **May 14, 2015**

and Checked for

CONFORMANCE

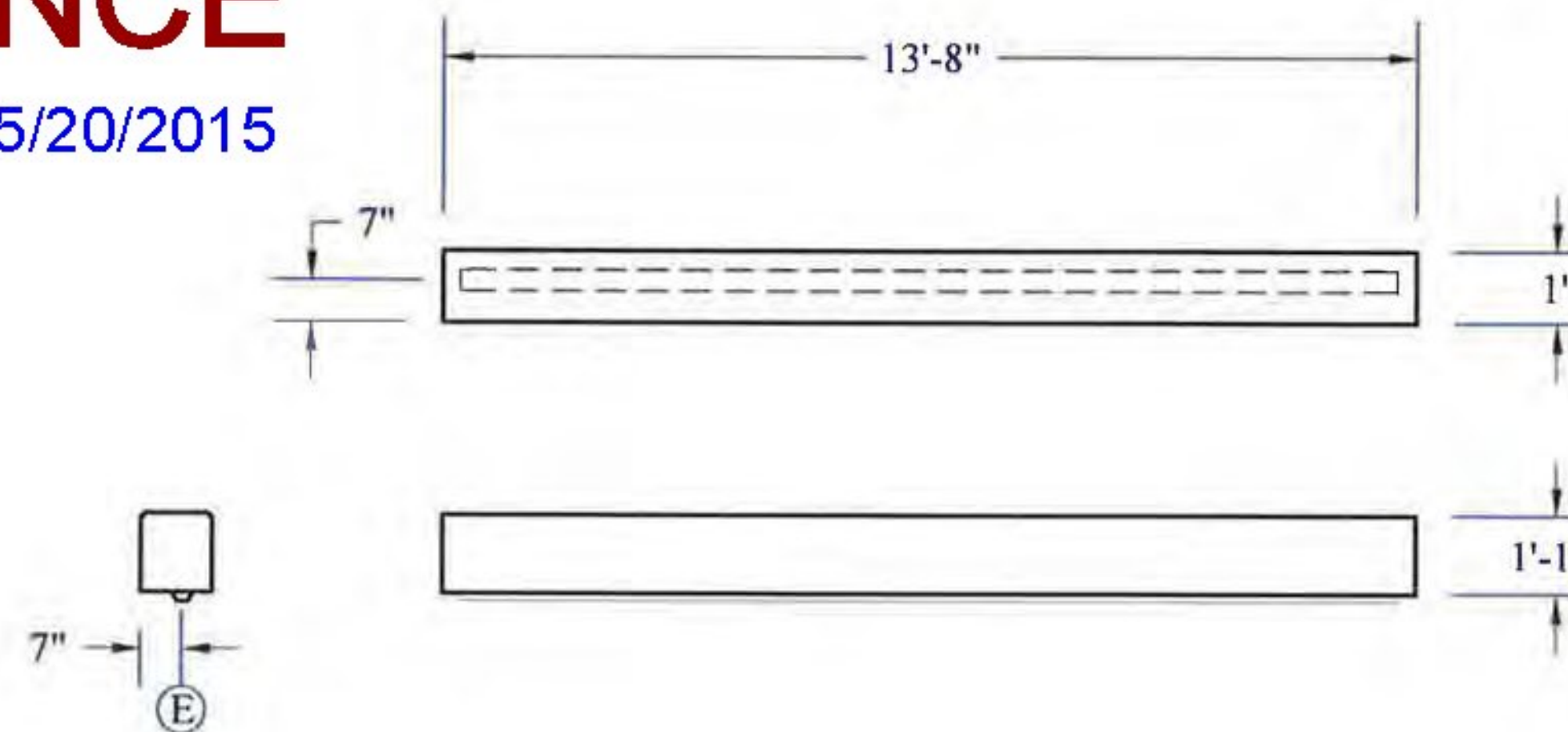
BY: Mark Sargent DATE: 5/20/2015

CW-1/2 Detail

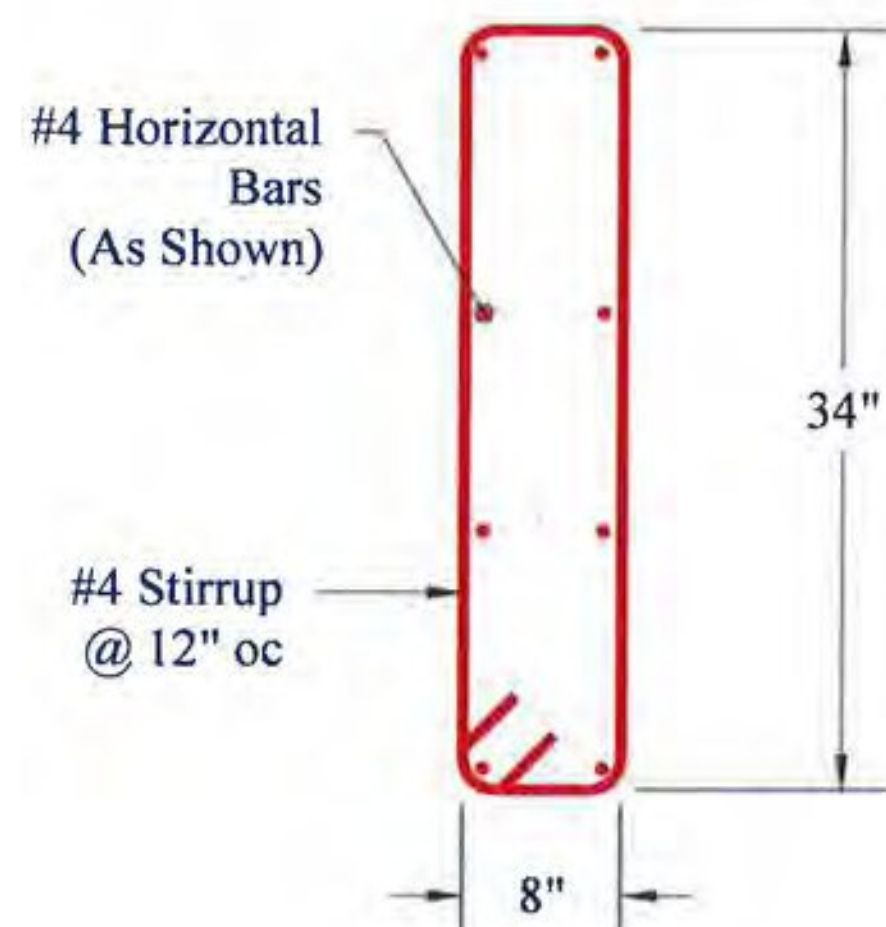


Headwall 1 Detail
(See Reinforcing Details on Sheet 7)

Note: - Secondary Pour
- Not Battered

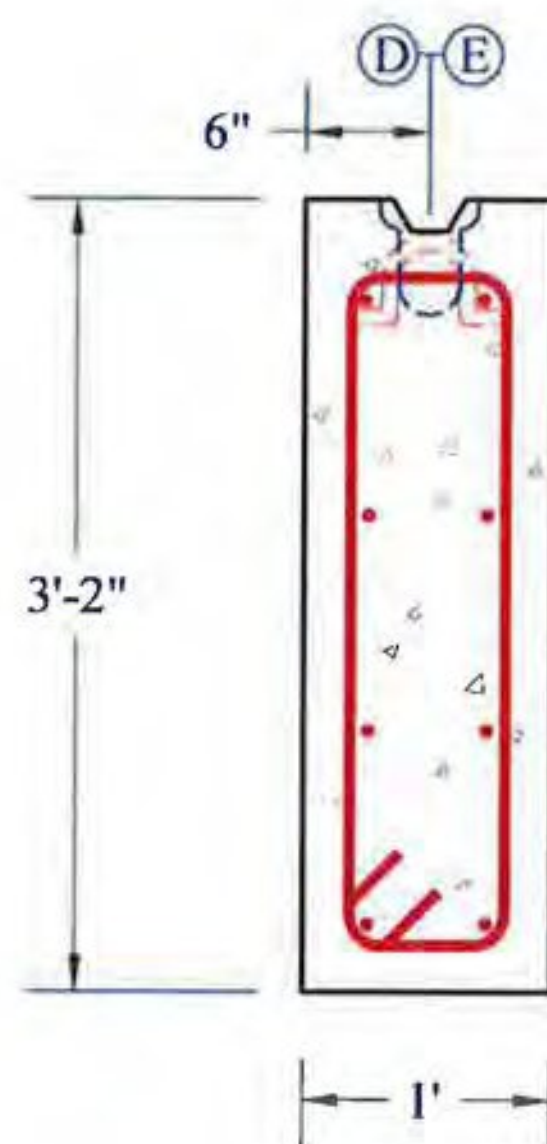


Cutoff Wall
Reinforcement Detail



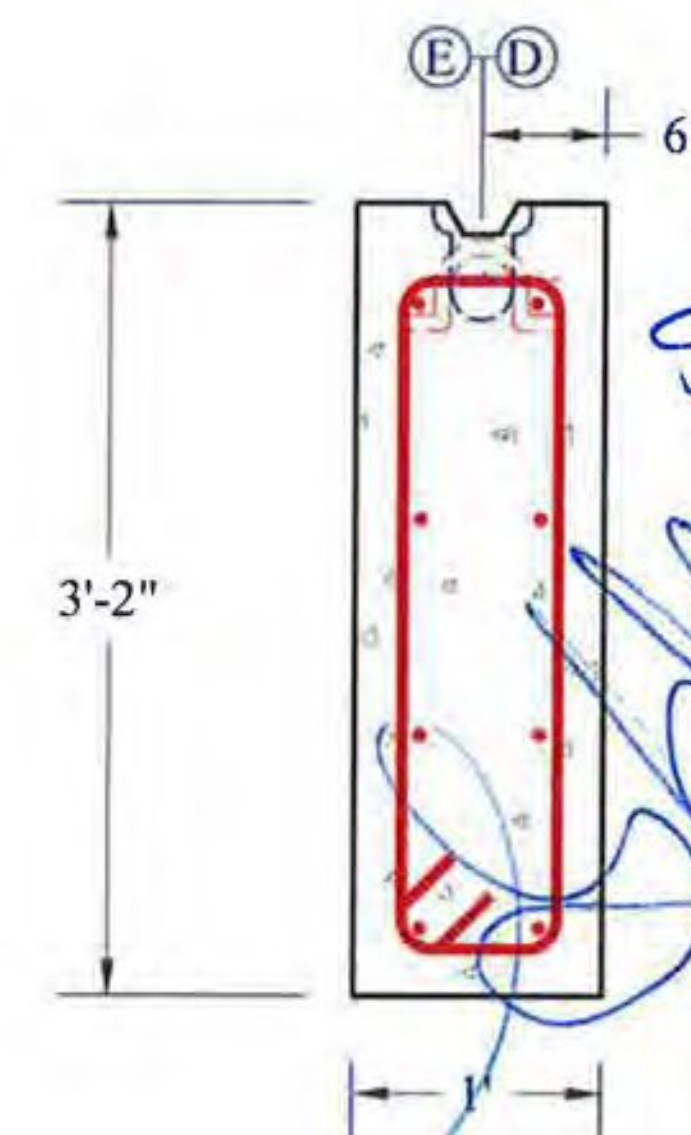
CW-1 Detail

Note: 2" Clear Cover



CW-2 Detail

Note: 2" Clear Cover



REVIEWED	X
REVIEWED AS MODIFIED	
REVISE AND RESUBMIT	
NOT REVIEWED	
Date: 5/15/15	
By: Michael J. Chenette	

Stantec

This review by Stantec Consulting Services Inc. is for the sole purpose of ascertaining conformance with the general design concept. This review shall not mean that Stantec Consulting Services Inc. approves the detail design inherent in the shop drawings, responsibility for which shall remain with the Contractor. Submitting same, and such review shall not relieve the Contractor of his responsibility for meeting all requirements of the Contract Documents. The contractor is responsible for dimensions to be confirmed and correlated at the job site, for information that pertains solely to the fabrication processes or to techniques of construction and installation and for coordination of the work of all subtrades.

S/12/15

STRUCTURAL DESIGN ONLY

GARY K. MUNKELT
STATE OF VERMONT
REGISTERED PROFESSIONAL ENGINEER
NO. 6291

CONTRACTORS VTSPE:	Rev.	Date	By	Description
(A) 3"Ø PVC Sleeve	1	05/06/15	IBA	Changes per Redesign
(B) 4"Ø PVC Sleeve	2	05/11/15	IBA	Inlet/Outlet BC Change
(C) Mechanical Bolt Pocket (w/ 1"Ø Coil Rod)				
(D) Oxford A750-7 Lifting Device				
(E) 1 1/2" x 3 1/2" Continuous Keyway				
(F) Solid Lines Indicate 3/4" Chamfer				
(G) 1/4" FX-5 Ferrule Loop Insert				

Rev.	Date	By	Description
1	05/06/15	IBA	Changes per Redesign
2	05/11/15	IBA	Inlet/Outlet BC Change

PRECAST CONCRETE BOX CULVERT SHOP DRAWINGS (SDI JOB #15428)

SUPERVISOR: E. Barendse
 DETAILER: I. ADAMS
 CHECKER: E. Barendse
 ENGINEER: G. K. Munkelt

Peckham Road Corp.
 1557 St. Rt. 9, #3
 Lake George, NY 12845
 Ph: (518) 747-3353

FABRICATOR:
 193 INDUSTRIAL AVE.
 WILLISTON, VT 05495
 Ph: (802) 658-0201

