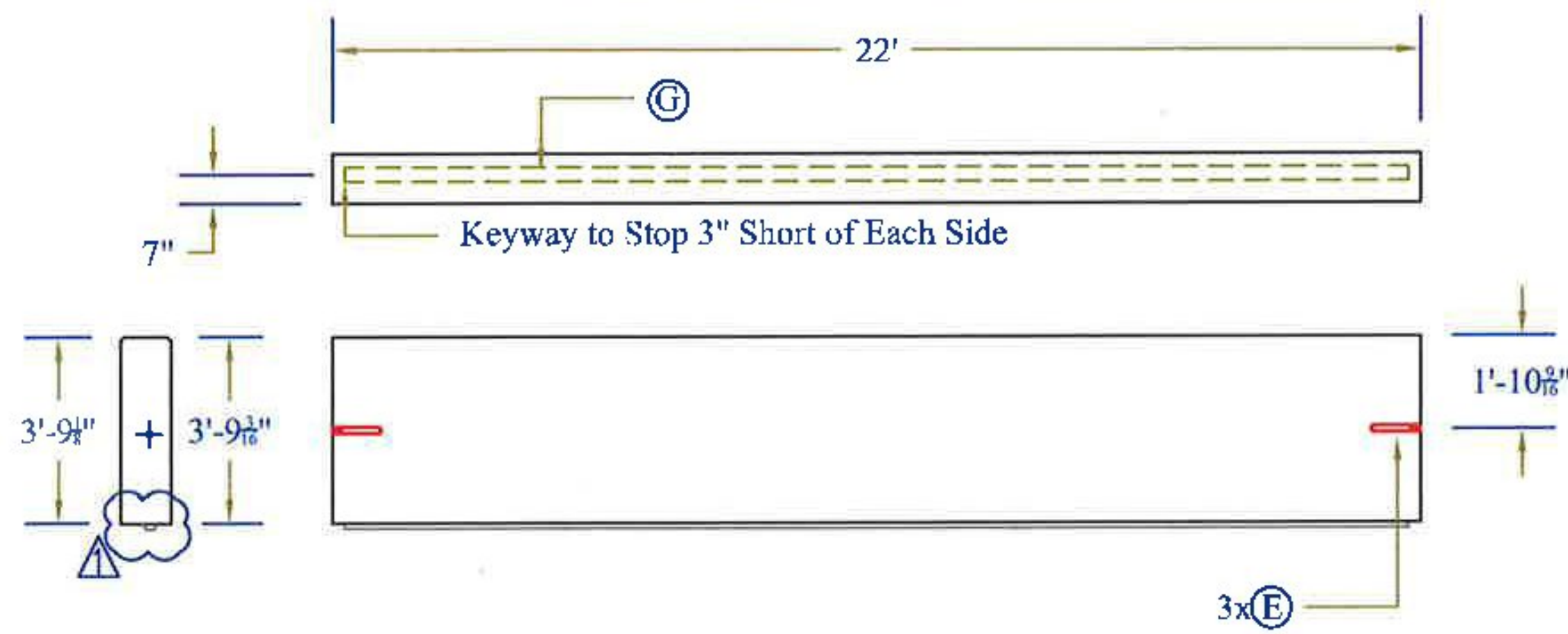
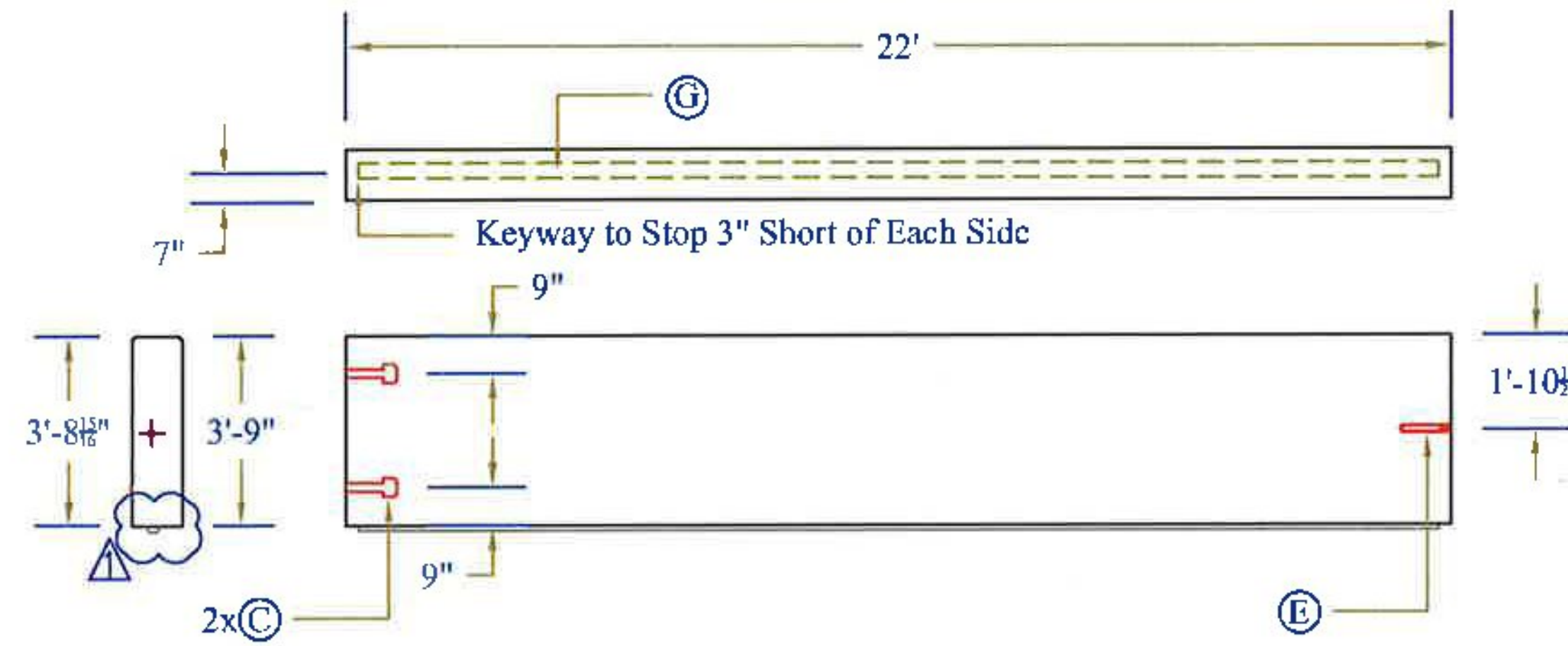


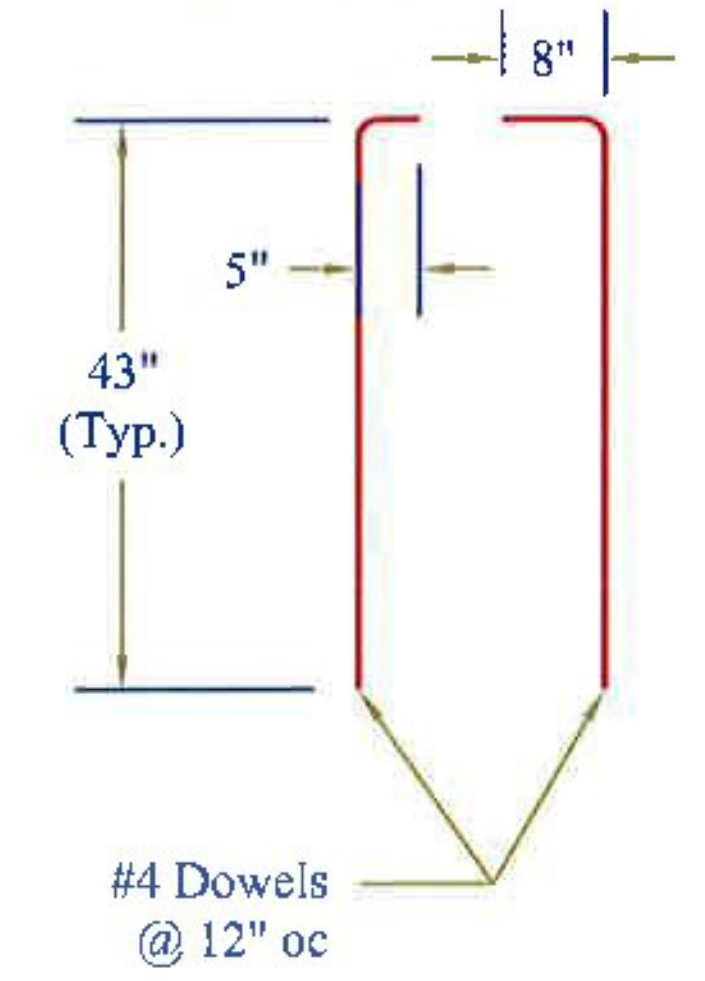
Headwall 1 Detail



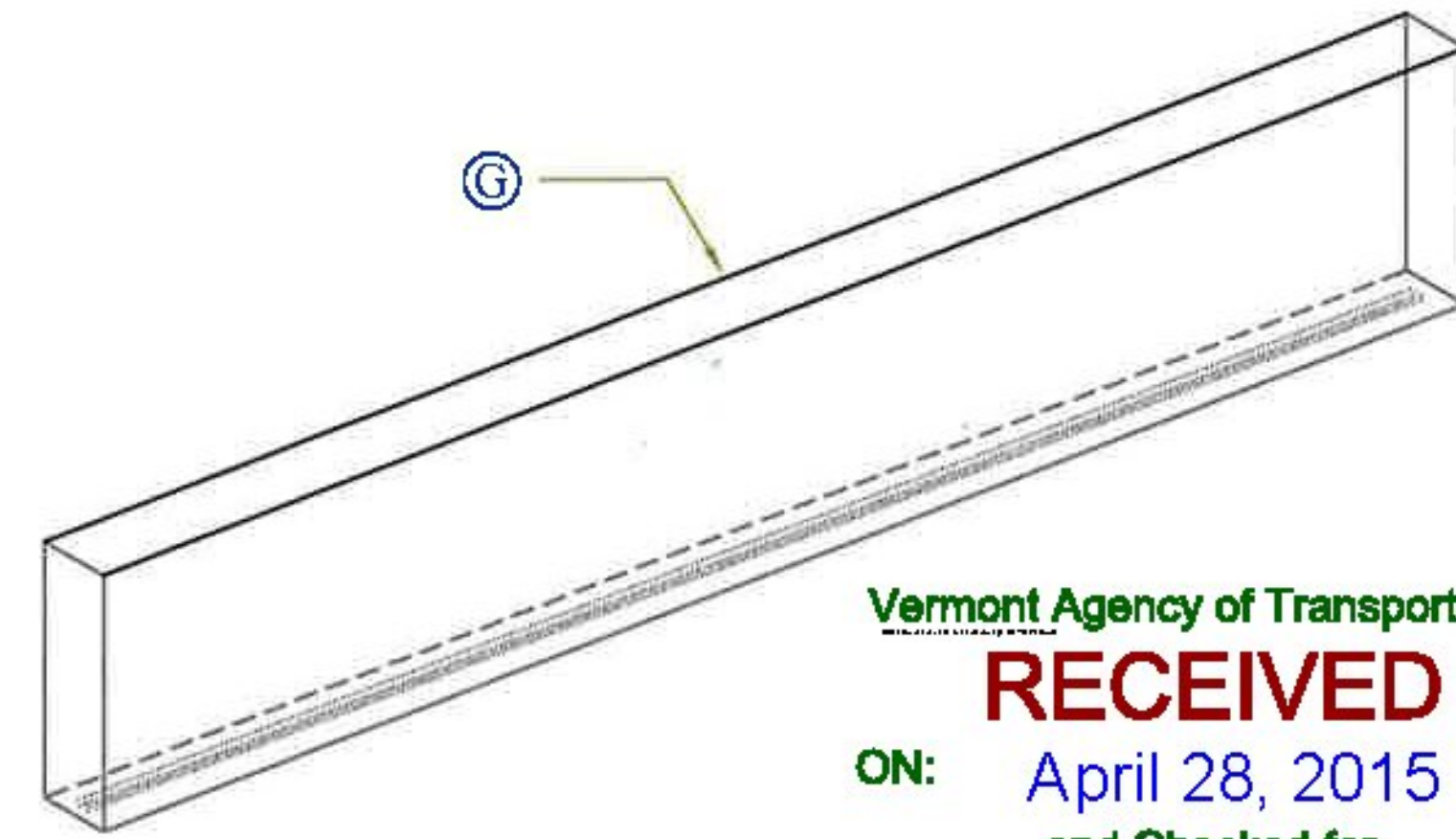
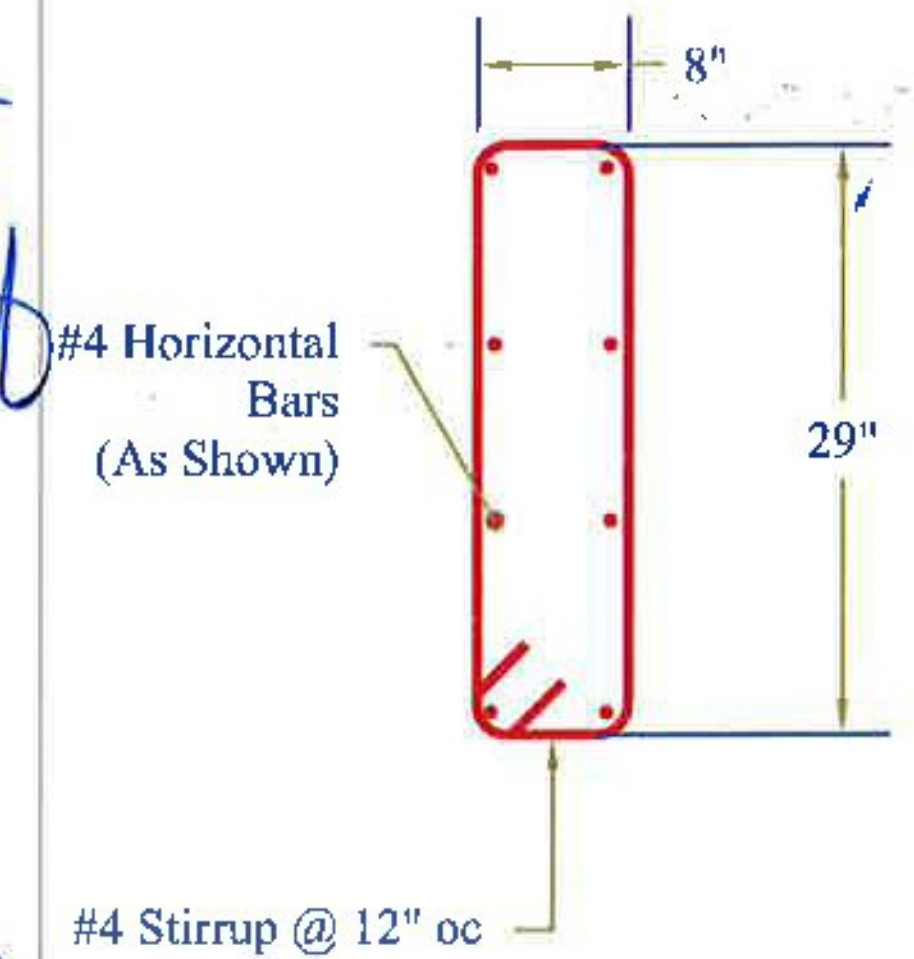
Headwall 2 Detail



Headwall Reinforcing



Cutoff Wall Reinforcing



Vermont Agency of Transportation
RECEIVED
 ON: April 28, 2015
 and Checked for
CONFORMANCE
 BY: Mark Sargent DATE: 04/29/2015

REVIEWED
 DESIGNED AND CHECKED
 REVIEW AND REVISIONS
 NOT REVIEWED
 Date: 4/24/2015
 By: Nathan Tirk
 This review by Stantec Consulting Services Inc. is for the sole purpose of ascertaining conformance with the general design concept. This review is not an endorsement of Stantec Consulting Services Inc. approval of the design, inherent in shop drawings, responsibility for which shall remain with the Contractor. Submittals, and such review shall not relieve the Contractor of its responsibility for errors or omissions in the shop drawings or of its responsibility for meeting all requirements of the Contract Documents. The Contractor retains responsibility for maintaining the design and construction of the project, for information that pertains solely to the Contractor's processes or to techniques of construction and installation and for coordination of the work of all trades.

Stantec

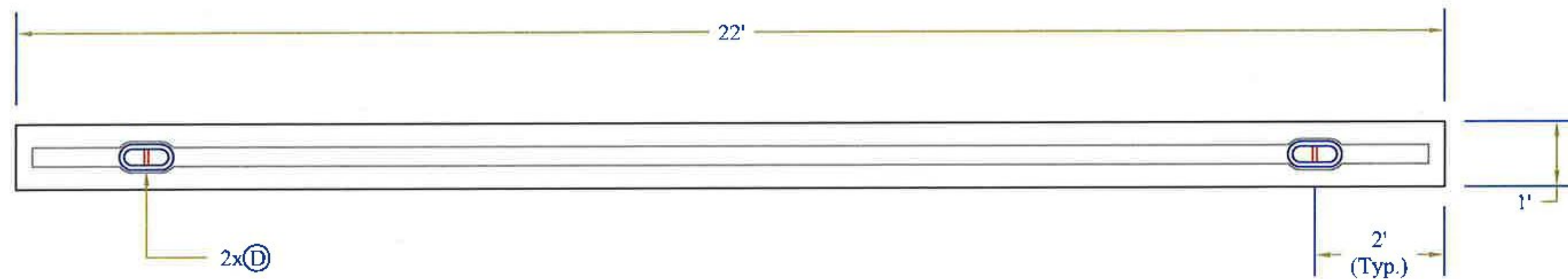
4/28/15
 GARY K. MUNKELT
 NO. 6291
 REGISTERED PROFESSIONAL ENGINEER

STRUCTURAL DESIGN ONLY

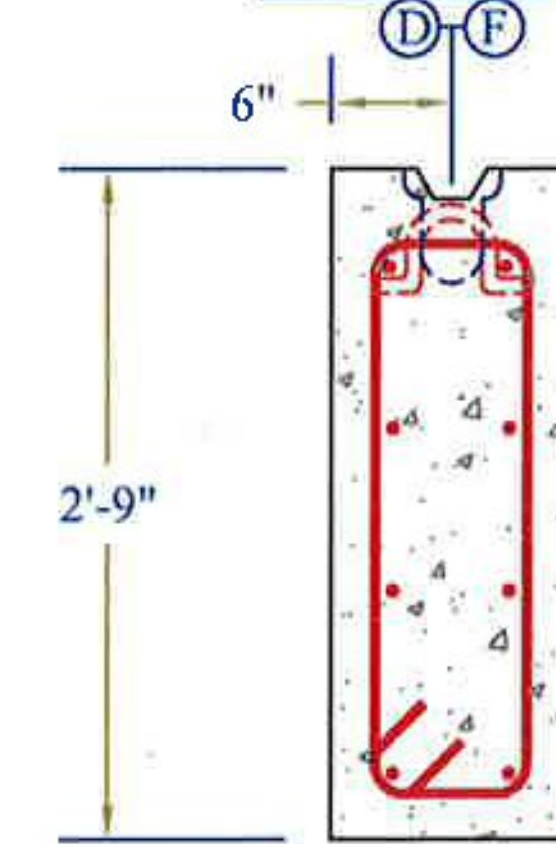
Note: Secondary Pour

Note: Secondary Pour

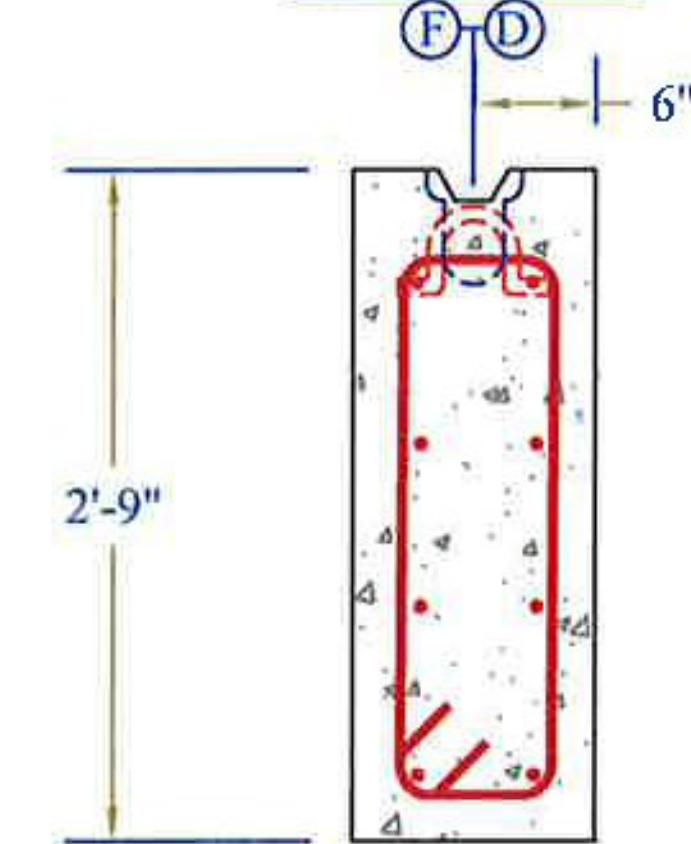
CW-1/2 Detail



CW-1 Detail



CW-2 Detail



Note: 2" Clear Cover

Note: 2" Clear Cover

CONTRACTORS VISPE:	Rev.	Date	By	Description
<ul style="list-style-type: none"> Ⓐ 3"Ø PVC Sleeve Ⓑ 4"Ø PVC Sleeve Ⓒ Mechanical Bolt Packet (w/ 1"Ø Coil Rod) Ⓓ Oxford A750-7 Lifting Device Ⓔ 1"Ø x 5/8" F56 Coil Loop Insert Ⓕ 1 1/2" x 3 1/2" Continuous Keyway Ⓖ Solid Lines Indicate 3/4" Chamfer Ⓗ 3" F64 Ferrule Loop Insert 	1	03/25/15	IBA	Changes per Stantec & State Review
	2	04/23/15	IBA	Changes for Production Purposes

Rev.	Date	By	Description
1	03/25/15	IBA	Changes per Stantec & State Review
2	04/23/15	IBA	Changes for Production Purposes

PRECAST CONCRETE BOX CULVERT SHOP DRAWINGS (SDI JOB #15428)
 SUPERVISOR: E. Barendse
 DETAILER: I. ADAMS
 CHECKER: E. Barendse
 ENGINEER: G. K. Munkelt

Peckham Road Corp.
 1557 St. Rt. 9, #3
 Lake George, NY 12845
 Ph: (518) 747-3353
 02/12/15

FABRICATOR:
 193 INDUSTRIAL AVE.
 WILLISTON, VT 05495
 Ph: (802) 658-0201

SD Ireland PRECAST

HW_CW_DETAILS 7_OF_8