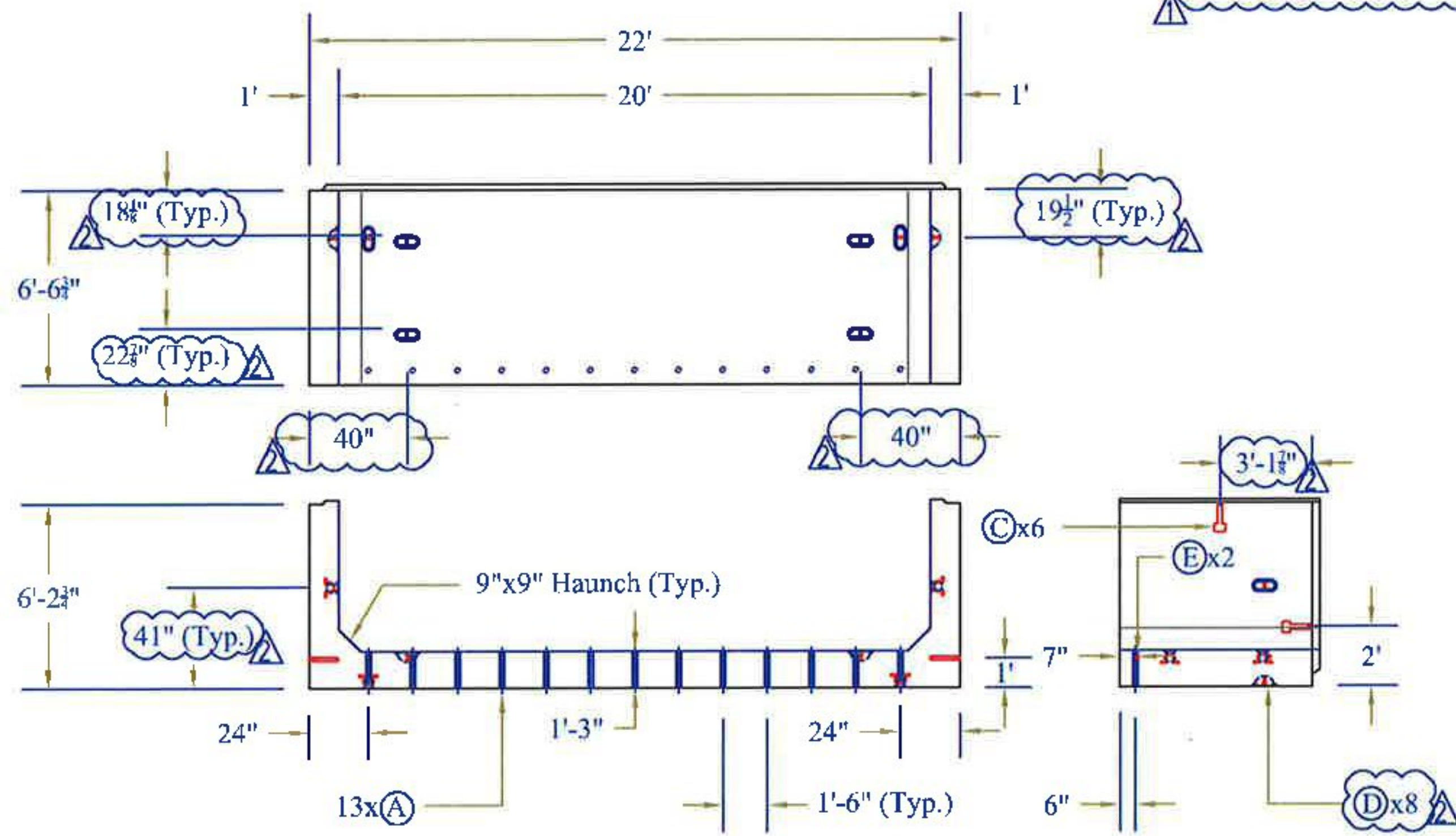


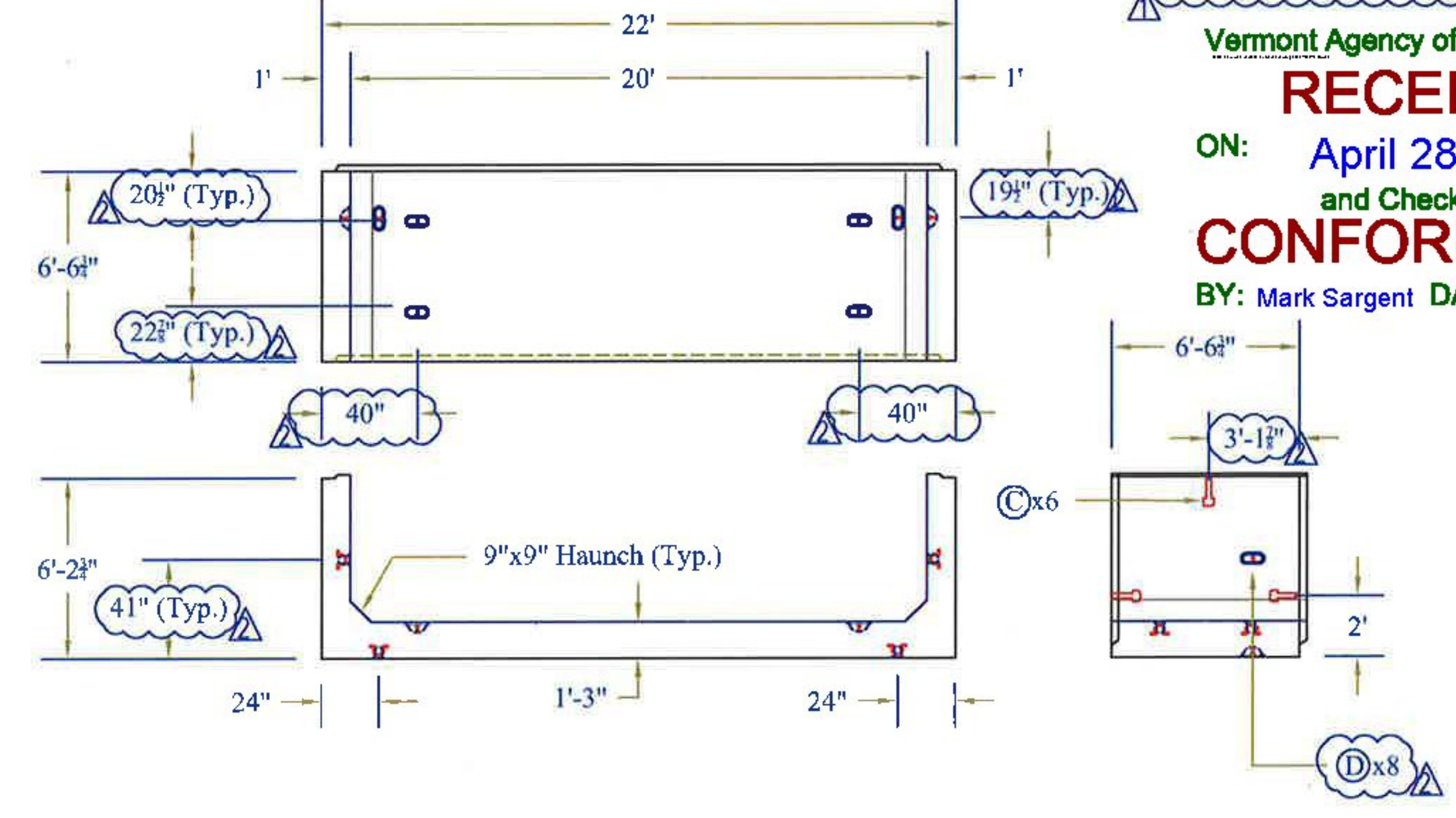
BC-1B Detail

Note: See Sh. 8 for Additional Details



BC-2B Detail

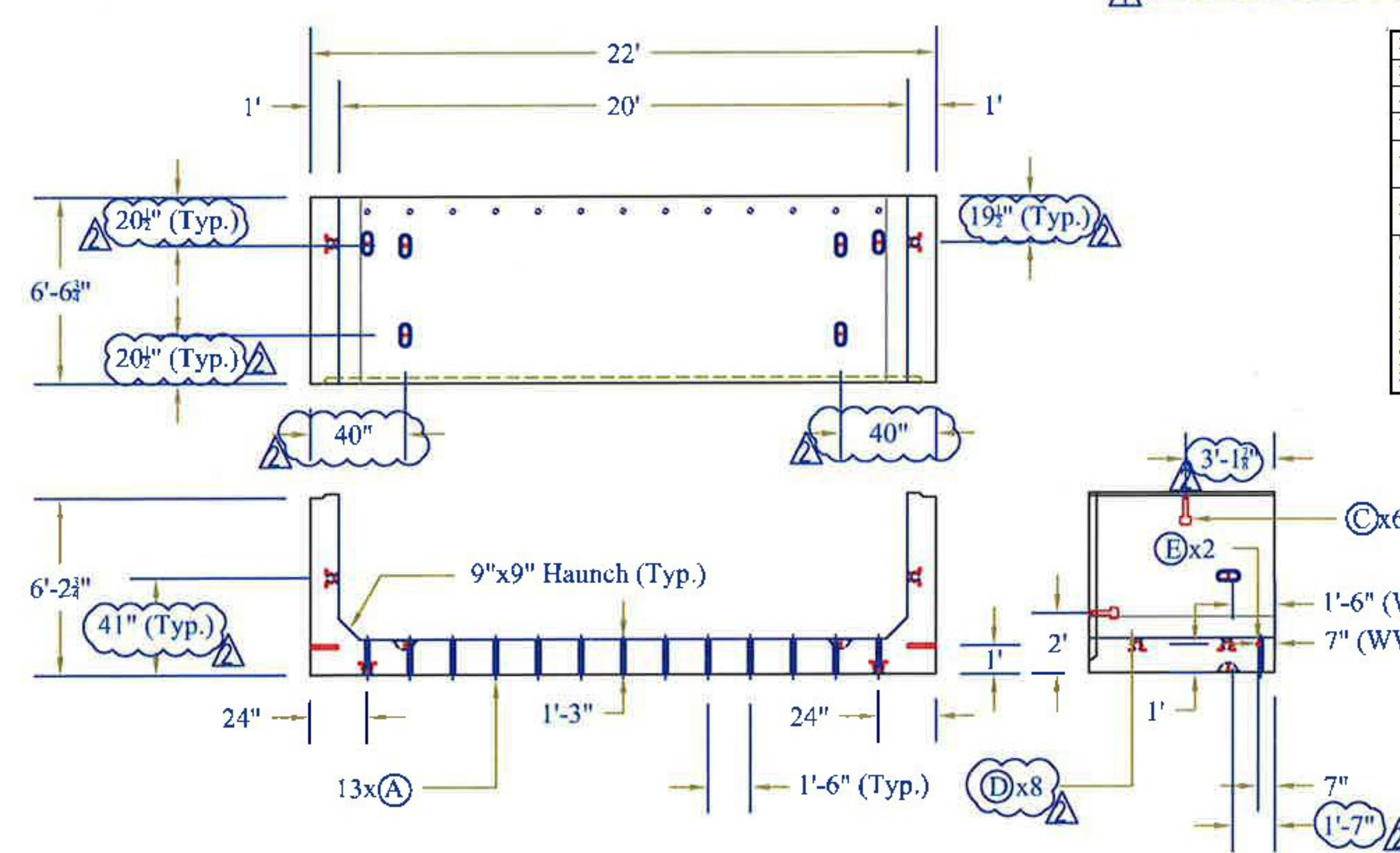
Note: See Sh. 8 for Additional Details



Vermont Agency of Transportation
RECEIVED
 ON: April 28, 2015
 and Checked for
CONFORMANCE
 BY: Mark Sargent DATE: 04/29/2015

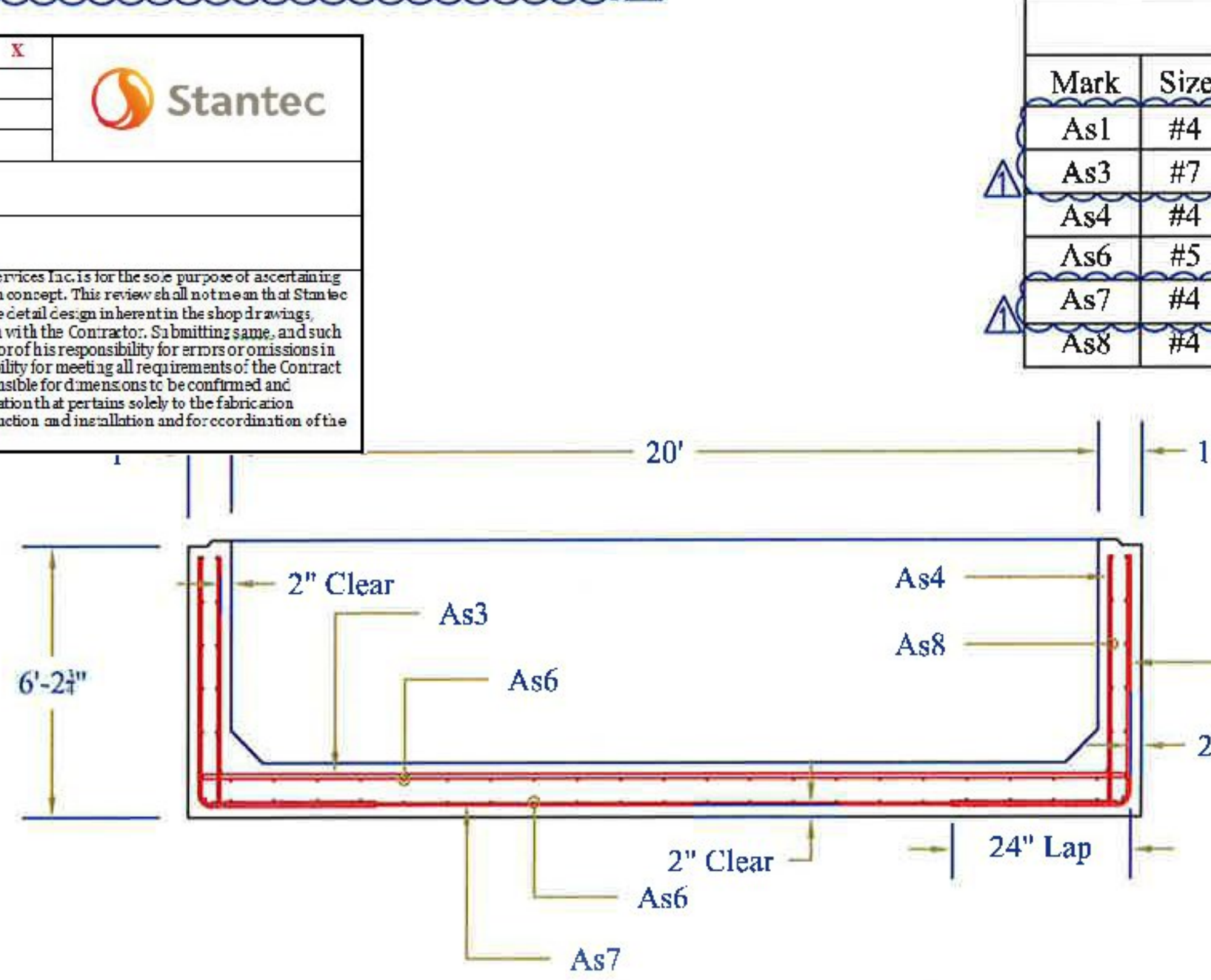
BC-3B Detail

Note: See Sh. 8 for Additional Details



Box Section Reinforcement Detail

Notes: 2" Clear Typical Unless Noted Otherwise



REVIEWED	X
REVIEWED AS MODIFIED	
REVISE AND RESUBMIT	
NOT REVIEWED	

Stantec

Date: 4/24/2015

By: Nathan Tirk

This review by Stantec Consulting Services Inc. is for the sole purpose of ascertaining conformance with the general design concept. This review shall not mean that Stantec Consulting Services Inc. approves the detail design inherent in the shop drawings, responsibility for which shall remain with the Contractor. Submitting same, and such review shall not relieve the Contractor of his responsibility for errors or omissions in the shop drawing or his responsibility for meeting all requirements of the Contract Documents. The contractor is responsible for dimensions to be confirmed and correlated at the job site, for information that pertains solely to the fabrication process or to techniques of construction and installation and for coordination of the work of all trades.

Mark	Size	Max Spacing	Length	Type	A	B
As1	#4	6"	94 3/4"	Bent	24"	70 3/4"
As3	#7	4"	260"	Str	260"	
As4	#4	8"	70 3/4"	Str	70 3/4"	
As6	#5	8"	74 3/4"	Str	74 3/4"	
As7	#4	6"	260"	Str	260"	
As8	#4	12"	74 3/4"	Str	74 3/4"	

STRUCTURAL DESIGN ONLY

STATE OF VERMONT
 GAYL K. MUNKELT
 NO. 8291
 REGISTERED
 PROFESSIONAL ENGINEER
 42815

CONTRACTORS VISIT: A 3"Ø PVC Sleeve B 4"Ø PVC Sleeve C Mechanical Bull Pocket (w/ 1"Ø Coil Rod) D Oxford A750-7 Lifting Device E 1"Ø x 5/8" F56 Coil Loop Insert F 1 1/2" x 3 1/2" Continuous Keyway G Solid Lines Indicate 1/4" Chamfer H 3/8" F64 Ferrule Loop Insert	Rev. 1 03/25/15 IBA Changes per Stantec & State Review	Rev. 2 04/23/15 IBA Changes for Production Purposes	PRECAST CONCRETE BOX CULVERT SHOP DRAWINGS (SDI JOB #15428) SUPERVISOR: E. Barendse DETAILER: I. ADAMS CHECKER: E. Barendse ENGINEER: G. K. Munkelt	Peckham Road Corp. 1557 St. Rt. 9, #3 Lake George, NY 12845 Ph: (518) 747-3353	FABRICATOR: 193 INDUSTRIAL AVE. WILLISTON, VT 05495 Ph: (802) 658-0201	SD Ireland PRECAST
	02/12/15 BOX_SECTIONS_2 4_OF_8					