

GPS CONTROL POINTS

HVCTRL #1

LEMON FAIR
 NORTH = 542755.824
 EAST = 1442527.781
 ELEV. = 207.150

GENERAL LOCATION, 5 MI (8.0 KM) WEST OF MIDDLEBURY.
 TO REACH FROM THE JUNCTION OF VT ROUTE 30 AND VT ROUTE 125 IN MIDDLEBURY, PROCEED WEST ON ROUTE 125 FOR 4.7 MI (7.6 KM) TO A SIDE ROAD LEFT CALLED WEST ST. PROCEED SOUTH ON WEST ST FOR 0.3 MI (0.5 KM) TO A GRAVEL DRIVE AND THE MARK ON THE LEFT AND EAST. THE MARK IS LOCATED 25 FT (7.6 M) EAST OF THE CENTERLINE OF THE ROAD, 18 FT (5.5 M) NORTH OF THE CENTERLINE OF THE GRAVEL DRIVE 4 FT (1.2 M) WEST OF A FENCE CORNER, AND 2 FT (0.6 M) WEST OF A FIBERGLASS WITNESS POST.

HVCTRL #2

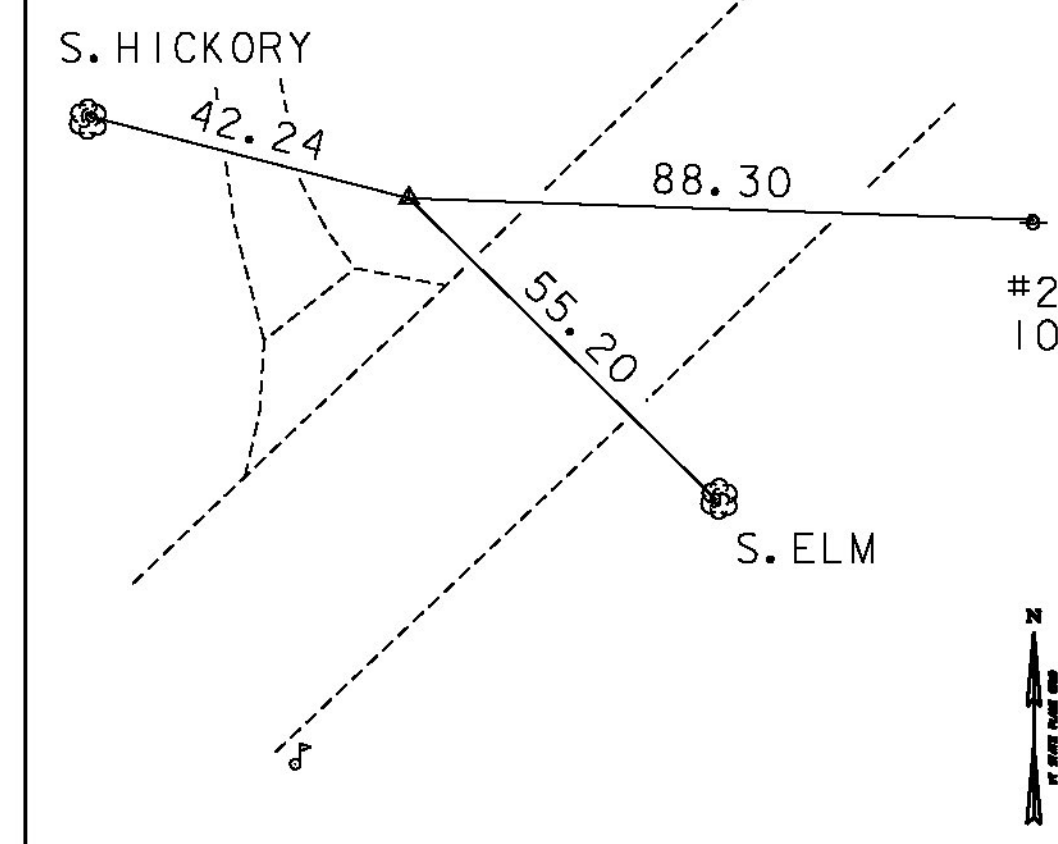
LEMON FAIR AZ MK
 NORTH = 546363.025
 EAST = 1440861.554
 ELEV. = 196.000

GENERAL LOCATION, 5 MI (8.0 KM) WEST OF MIDDLEBURY.
 TO REACH, FROM THE JUNCTION OF VT ROUTE 30 AND VT ROUTE 125 IN MIDDLEBURY, PROCEED WEST ON ROUTE 125 FOR 5.3 MI (8.5 KM) TO THE MARK ON THE LEFT. THE MARK IS LOCATED 315 FT (96.0 M) WEST OF THE CORNWALL/BRIDPORT TOWN LINE, 96.1 FT (29.3 M) SOUTHEAST OF UTILITY POLE NUMBER 49, 25.6 FT (7.8 M) SOUTH OF THE CENTERLINE OF ROUTE 125, AND 1 FT (0.3 M)

TRAVERSE TIES

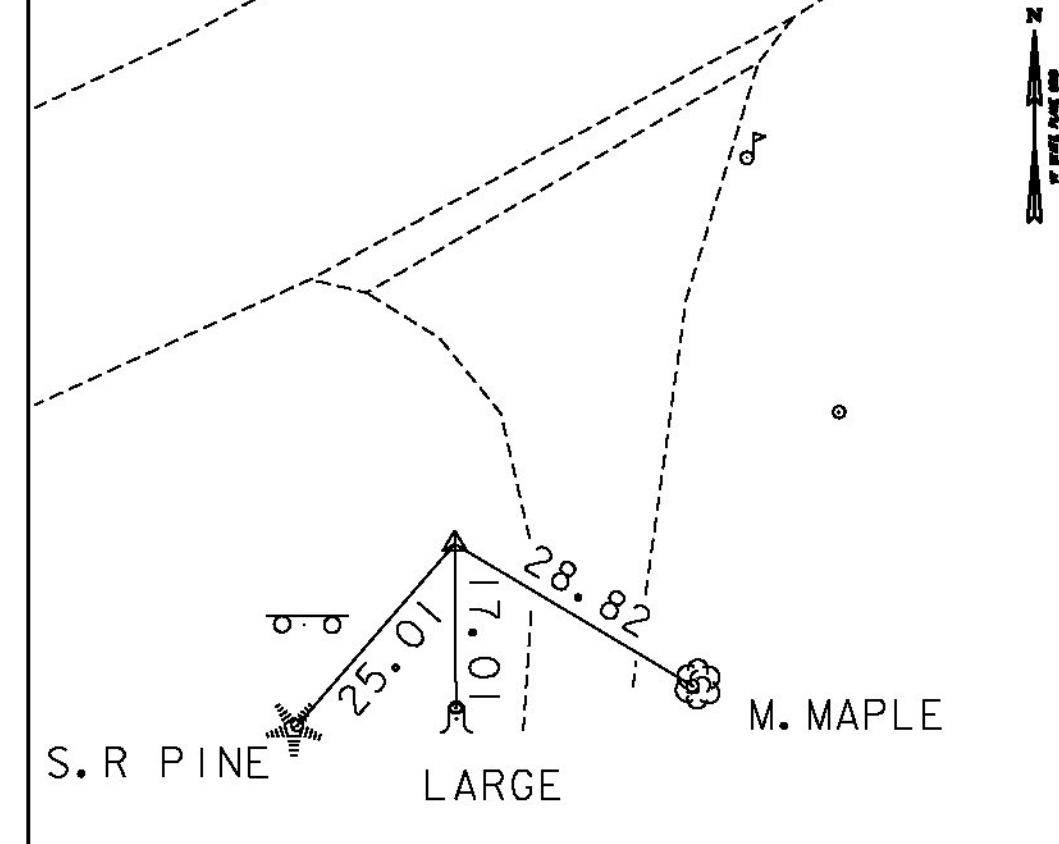
HVCTRL #6

NORTH = 544413.018
 EAST = 1435945.282
 ELEV. = 287.859



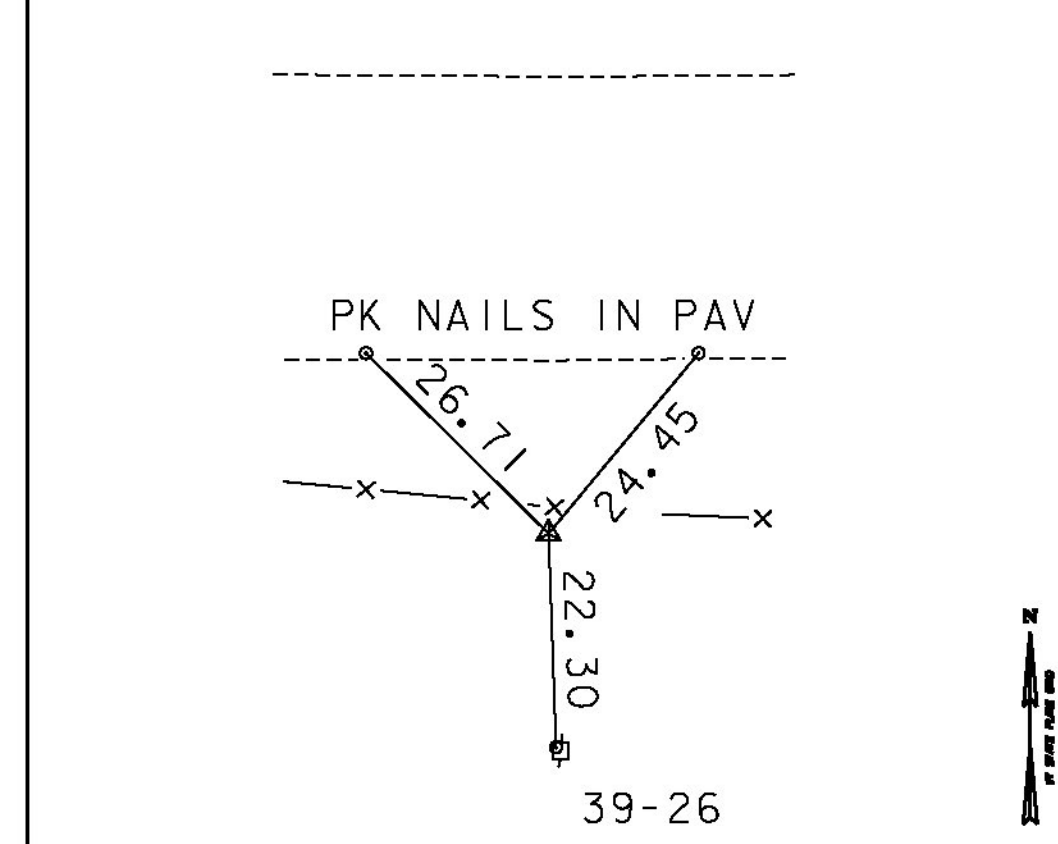
HVCTRL #7

NORTH = 544074.008
 EAST = 1435635.369
 ELEV. = 293.485



HVCTRL #8

NORTH = 543807.963
 EAST = 1434393.362
 ELEV. = 251.763

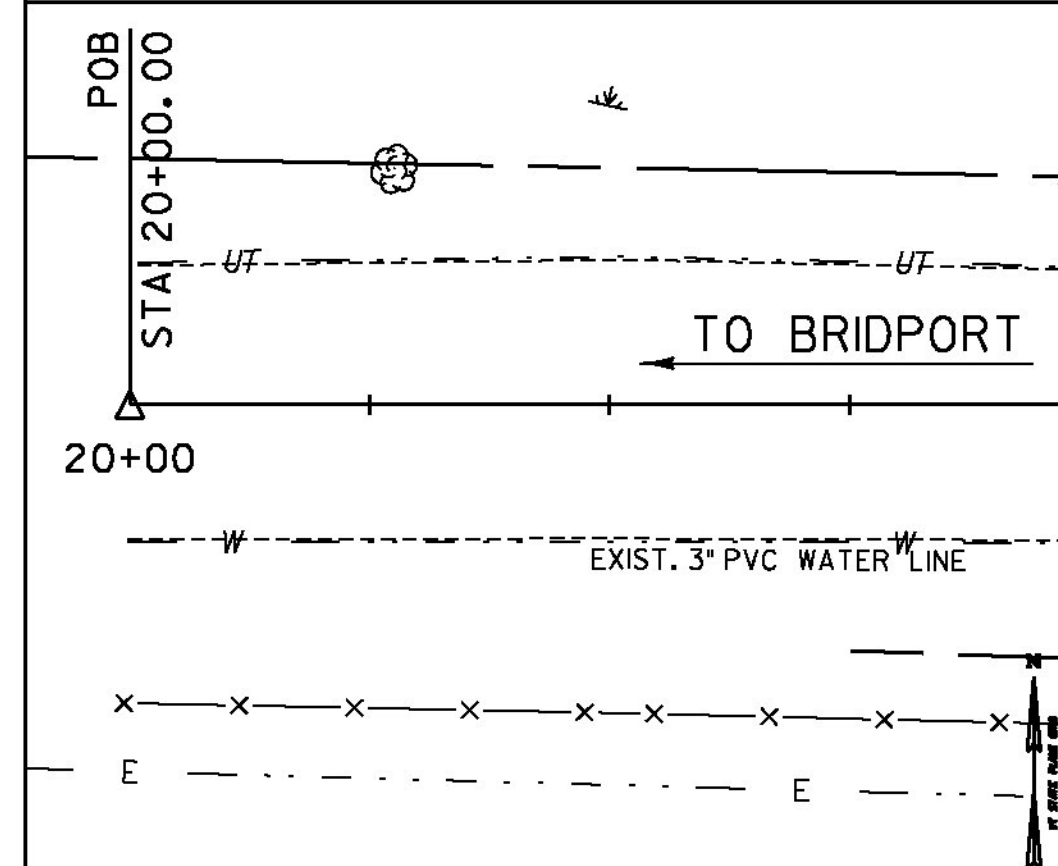


*MAIN TRAVERSE COMPLETED 1/23/2012 BY L. ORVIS P.C & G. HITCHCOCK

ALIGNMENT TIES

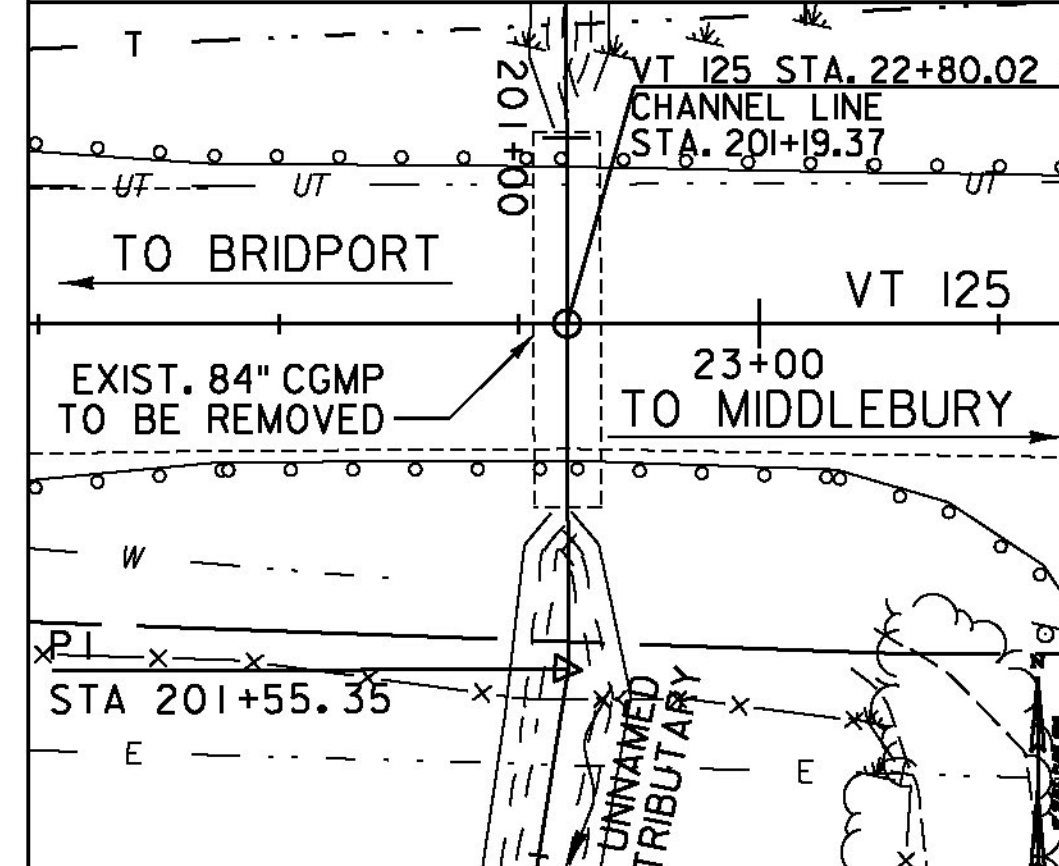
POB STA. 20+00.00

NORTH = 543881.306
 EAST = 1434702.227
 ELEV. =



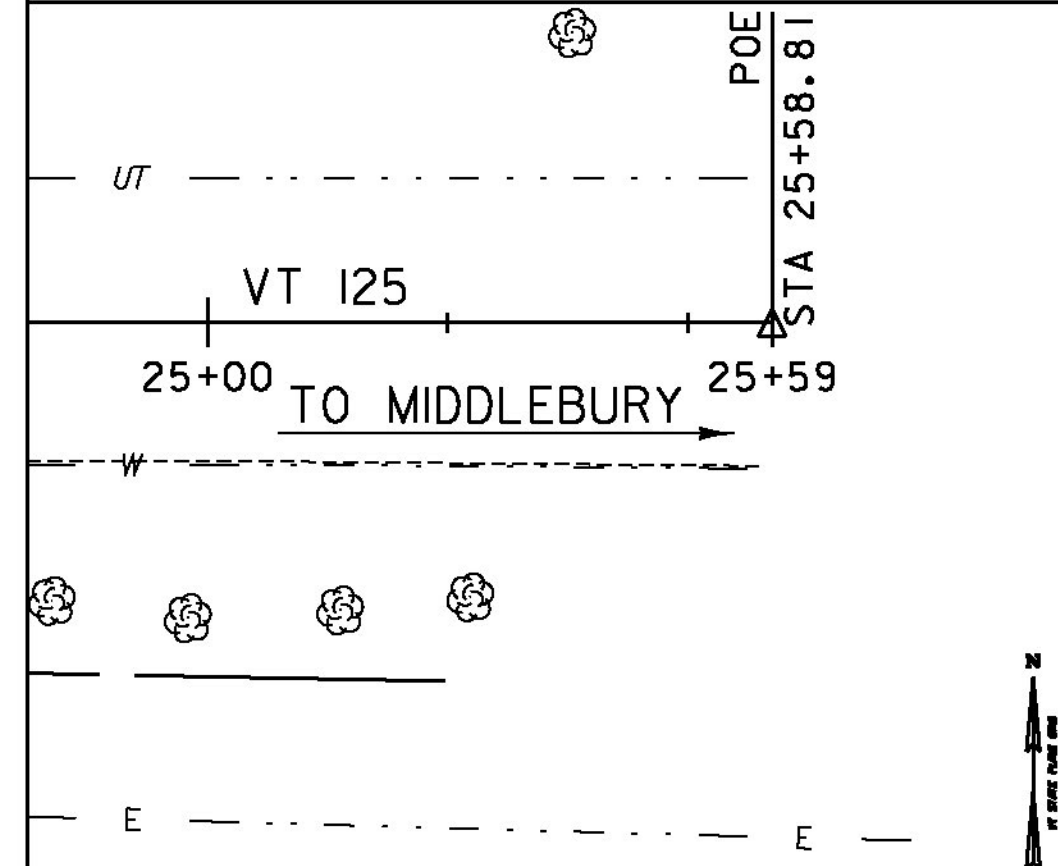
VT STA. 22+80.02

NORTH = 543941.912
 EAST = 1434975.611
 ELEV. =



POE STA. 25+58.81

NORTH = 544002.252
 EAST = 1435247.795
 ELEV. =



DATUM	
VERTICAL	NAVD 88
HORIZONTAL	NAD 83(92)
ADJUSTMENT	COMPASS

PROJECT NAME: BRIDPORT
 PROJECT NUMBER: STP CULV(29)

FILE NAME: zllc2641te_br5.dgn
 PROJECT LEADER: M. CHENETTE
 DESIGNED BY: J. HUNGERFORD
 SURVEY CONTROL AND TIES - BR5

PLOT DATE: 8/22/2014
 DRAWN BY: L. BUXTON
 CHECKED BY: M. CHENETTE
 SHEET 38 OF 57

