

GPS CONTROL POINTS

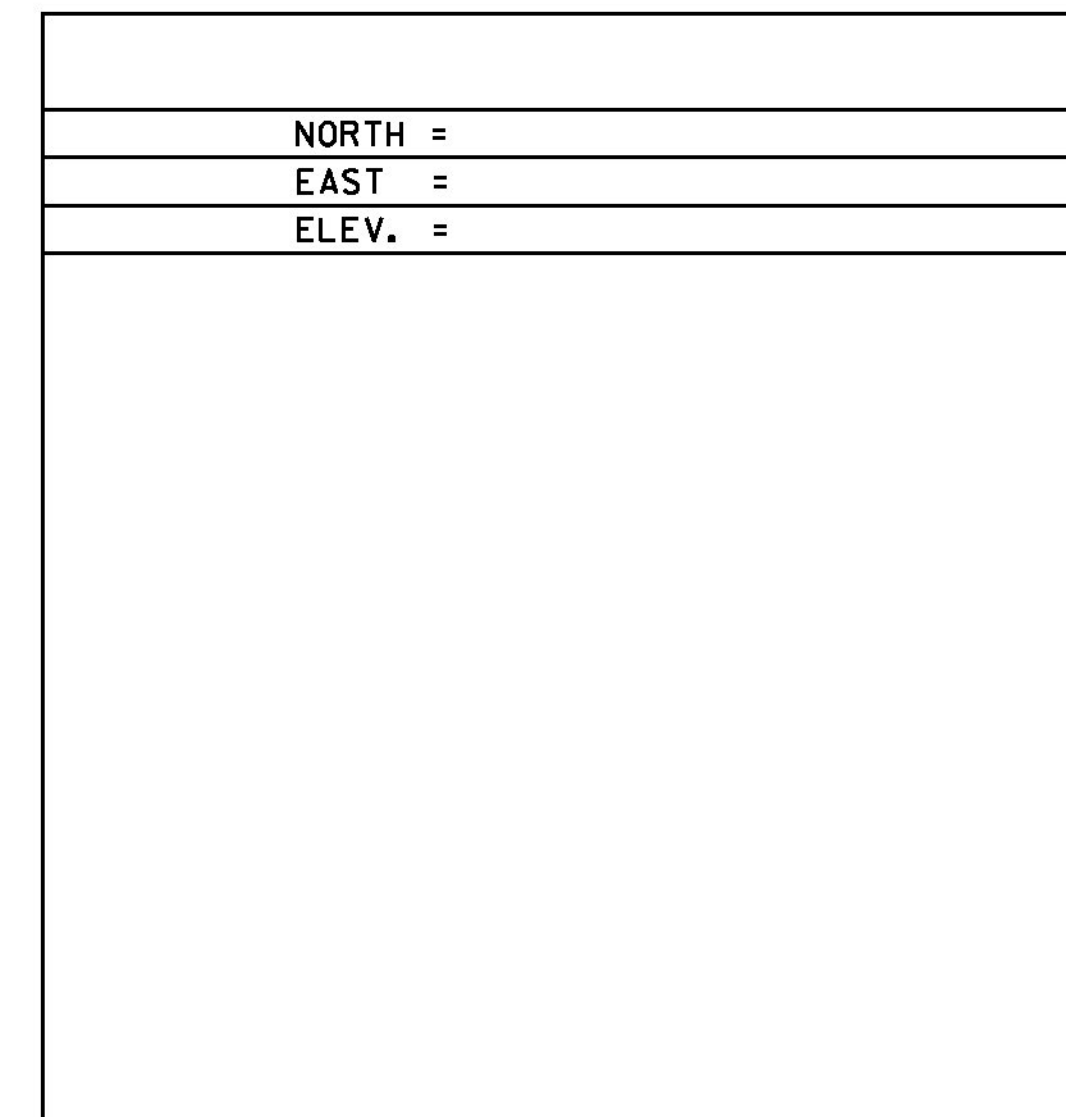
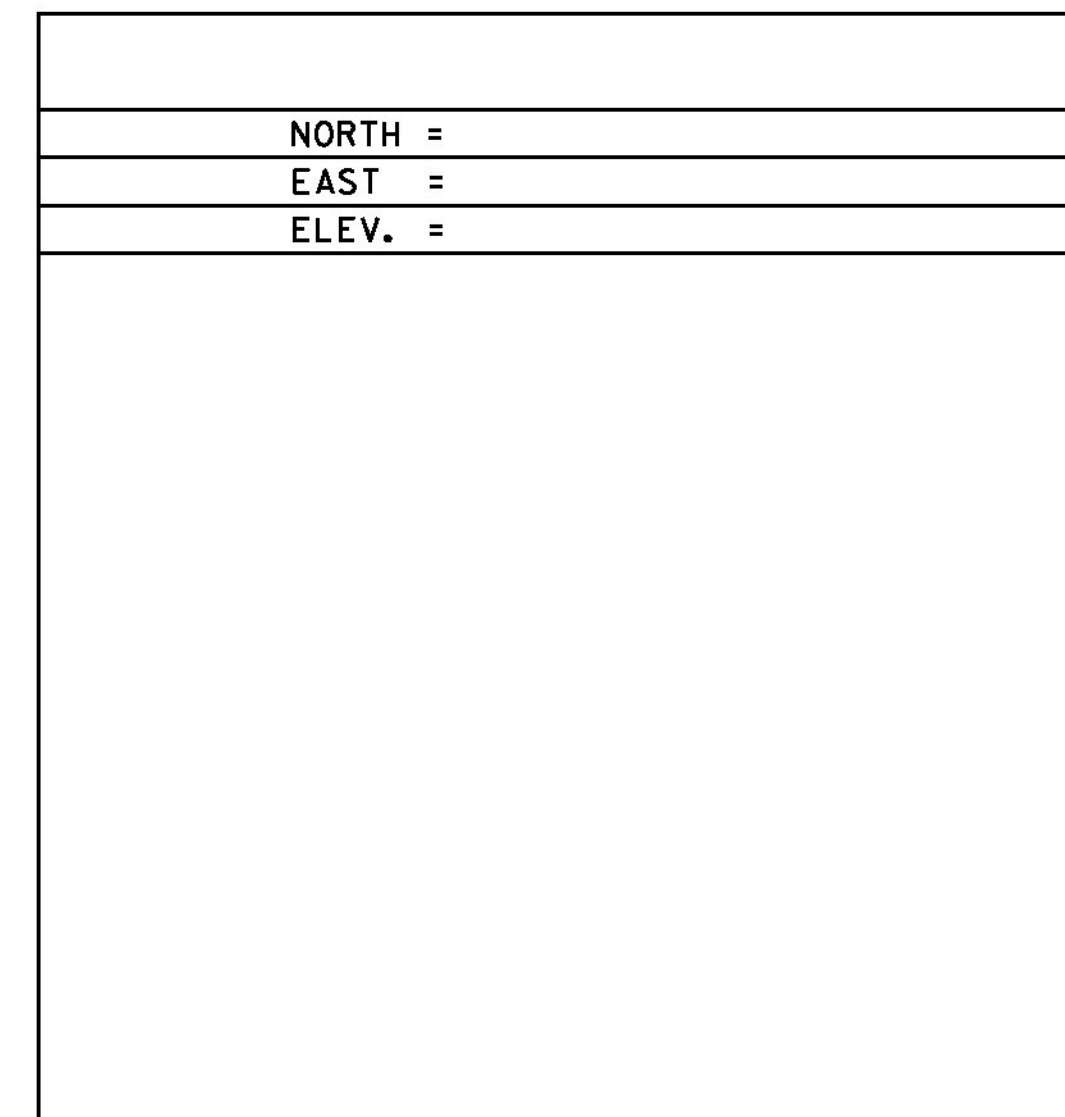
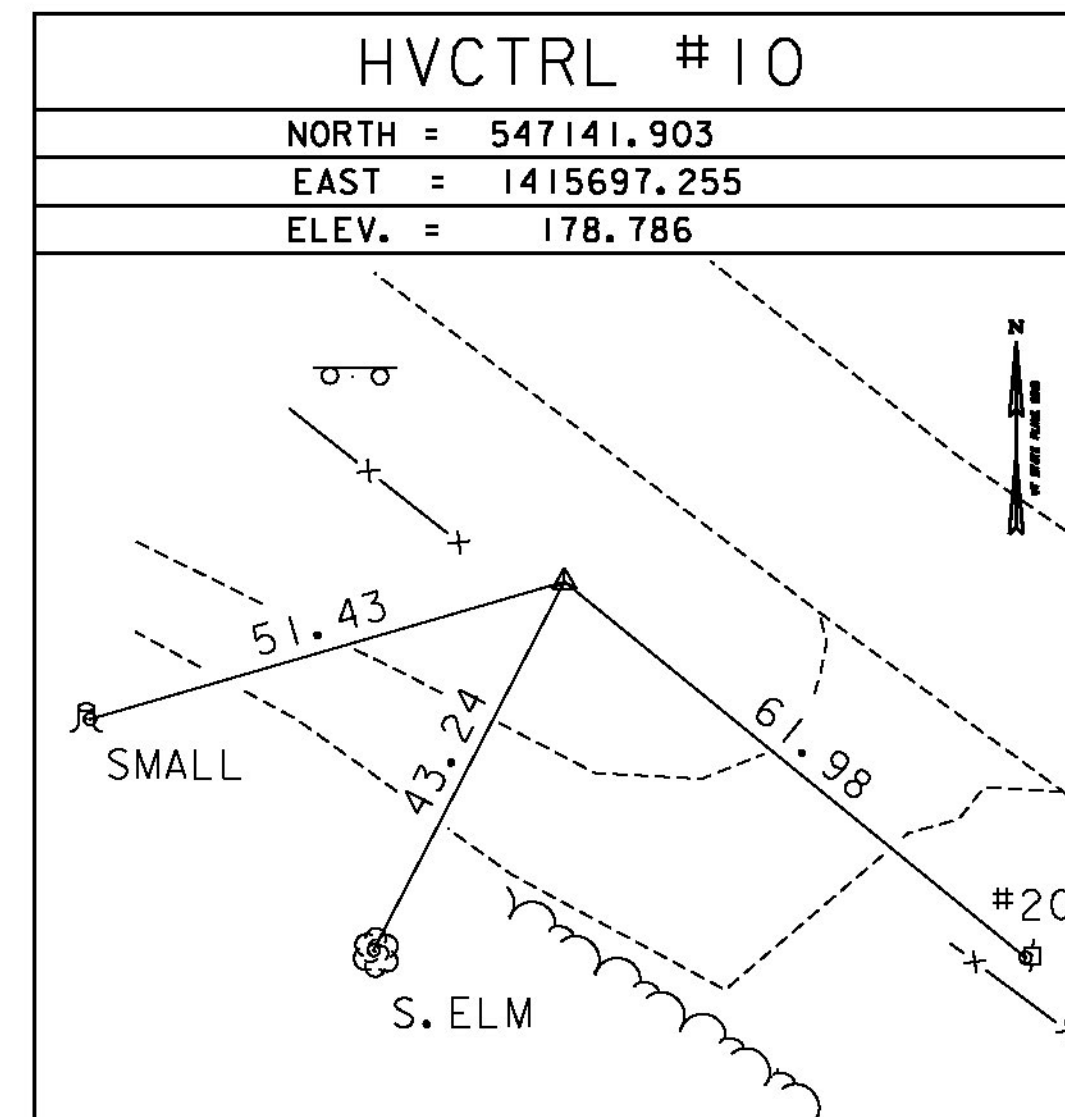
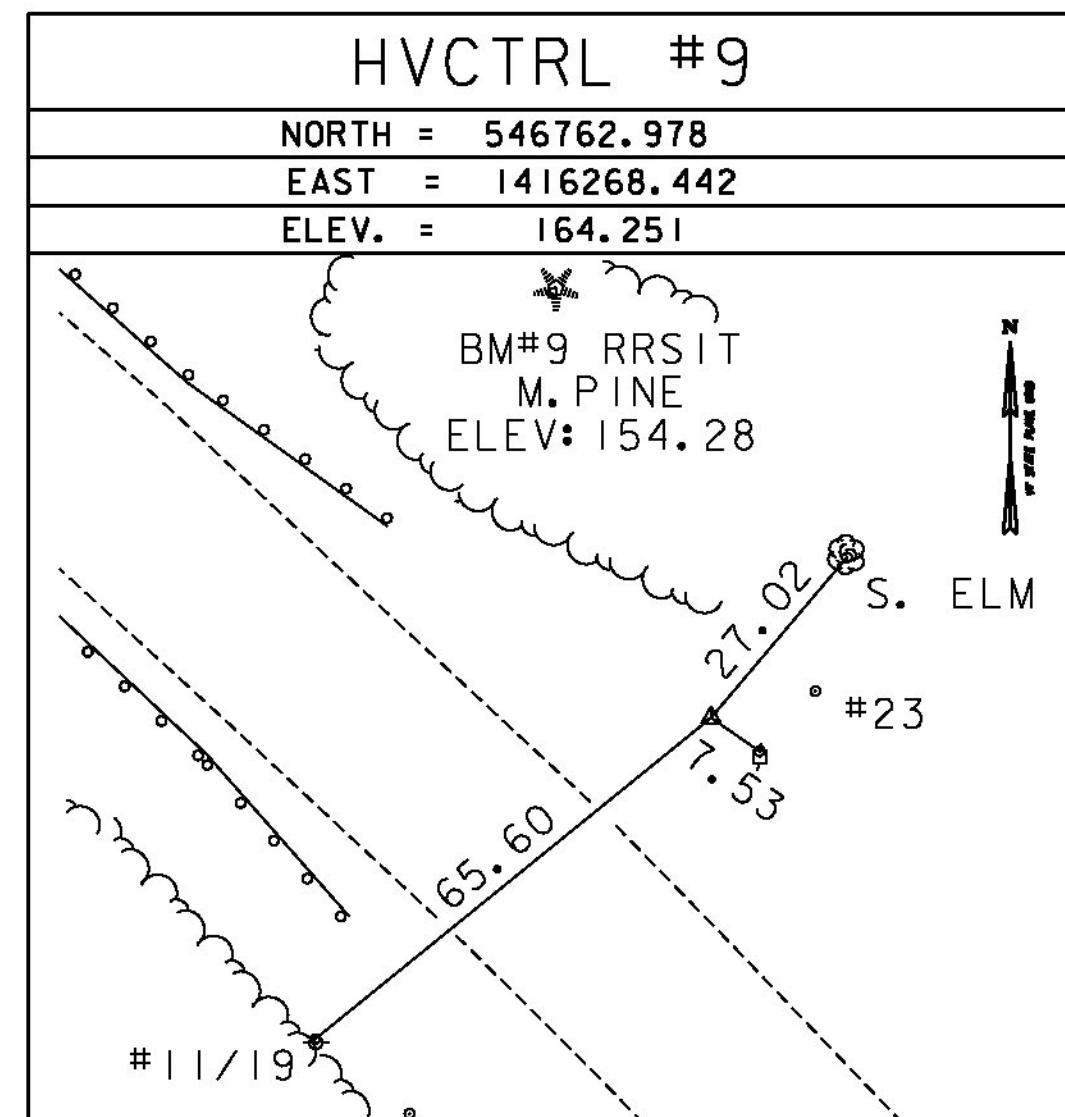
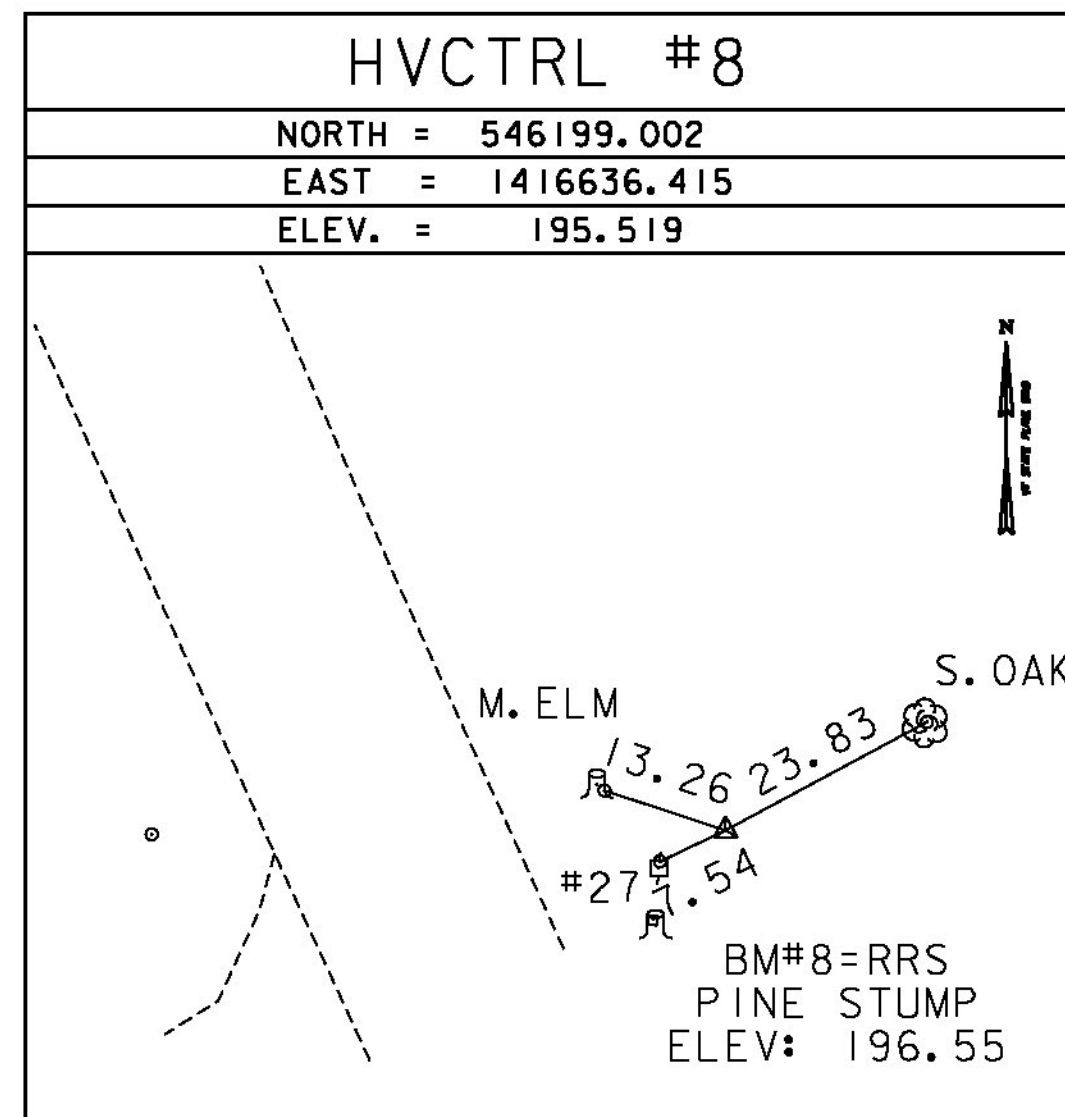
HVCTRL #1
 DIG HARD AZ MK
 NORTH = 544657.447
 EAST = 1418699.138
 ELEV. = 214.710

GENERAL LOCATION, BRIDPORT, VERMONT.
 TO REACH FROM THE INTERSECTION OF VT. ROUTES 22A AND 125 WEST IN BRIDPORT GO WEST ALONG VT. ROUTE 125 FOR 1.6 MI (2.6 KM) TO THE MARK ON THE LEFT. IT IS ABOUT 0.5 MI (0.8 KM) WEST OF THE VT. ROUTE 125 BRIDGE OVER THE EAST BRANCH DEAD CREEK. THE MARK IS SET FLUSH WITH THE GROUND SURFACE IN THE TOP OF A 30 CM DIAMETER CONCRETE MONUMENT SET 1.4 M (4.6 FT) DEEP. IT IS 4.1 M (13.5 FT) SOUTH OF AND ABOUT 0.3 M (1.0 FT) LOWER THAN THE SOUTH EDGE OF PAVEMENT OF VT. ROUTE 125, 28.2 M (92.5 FT) SOUTHWEST OF POLE NO. 21, 18.1 M (59.4 FT) EAST OF A 50 CM HICKORY, 9.6 M (31.5 FT) EAST OF THE CENTERLINE OF A GRAVEL DRIVE, AND 0.3 M (1.0 FT) NORTH OF A FIBERGLASS WITNESS POST

HVCTRL #2
 DIG HARD
 NORTH = 545190.812
 EAST = 1422015.220
 ELEV. = 171.234

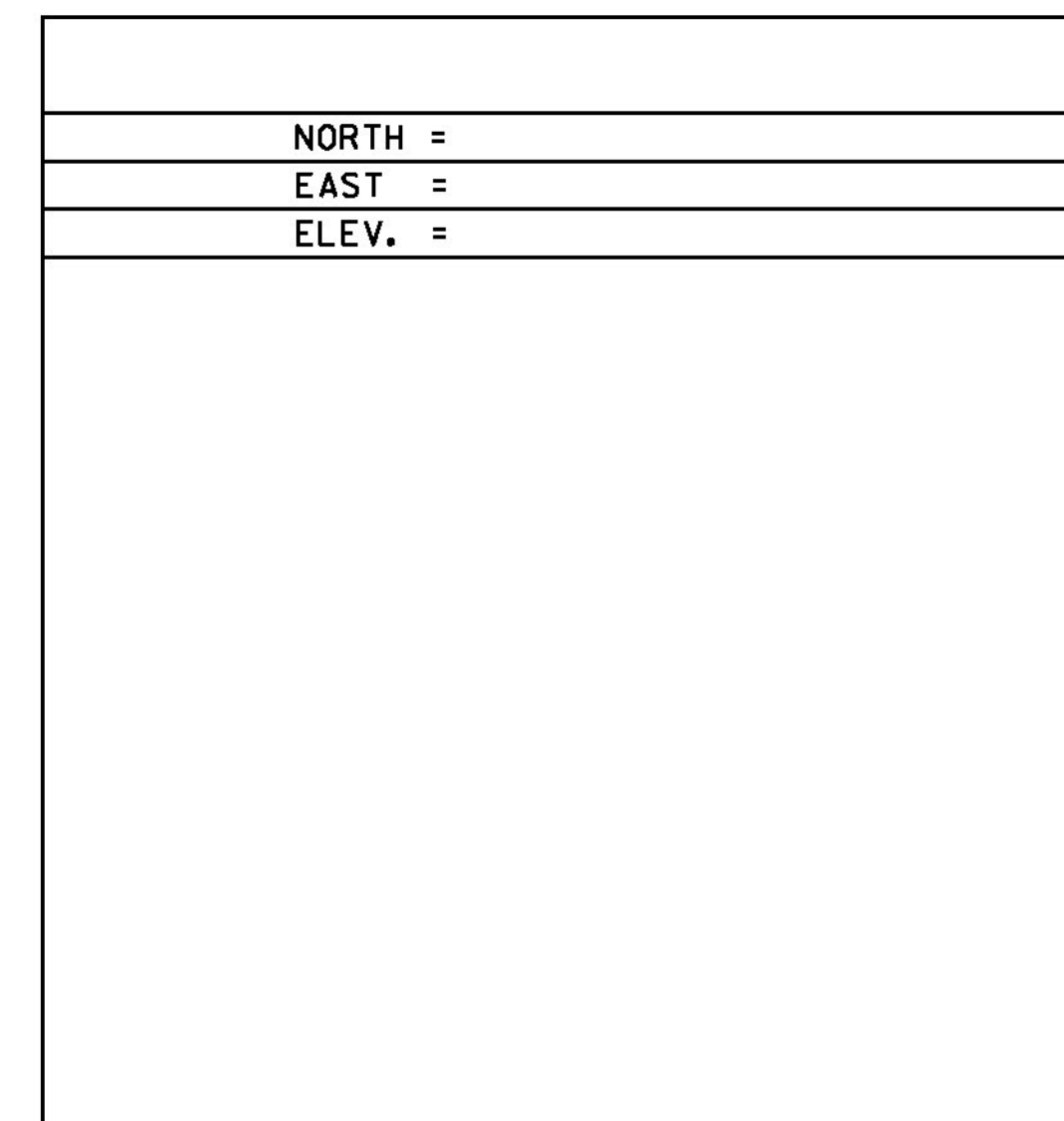
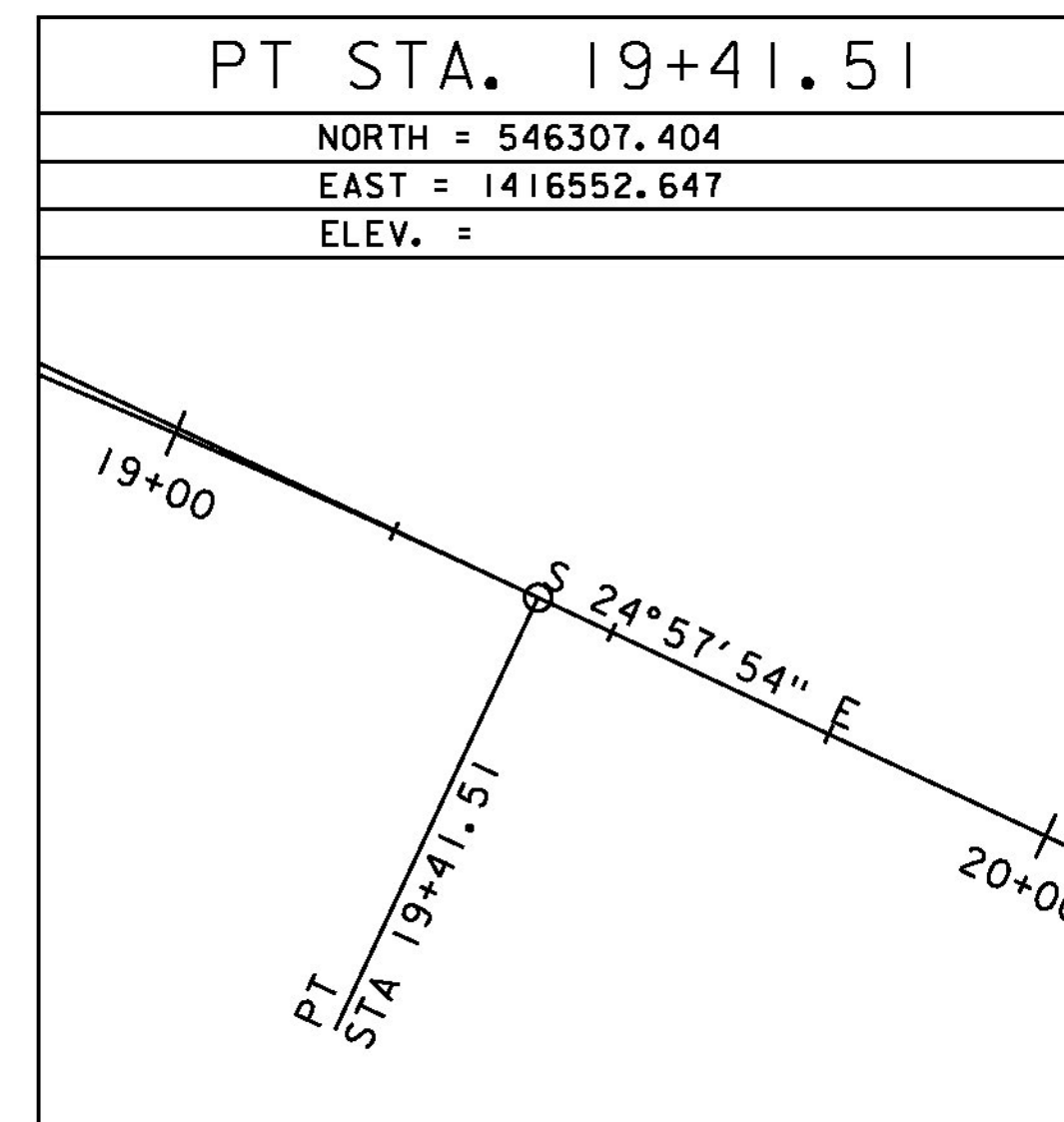
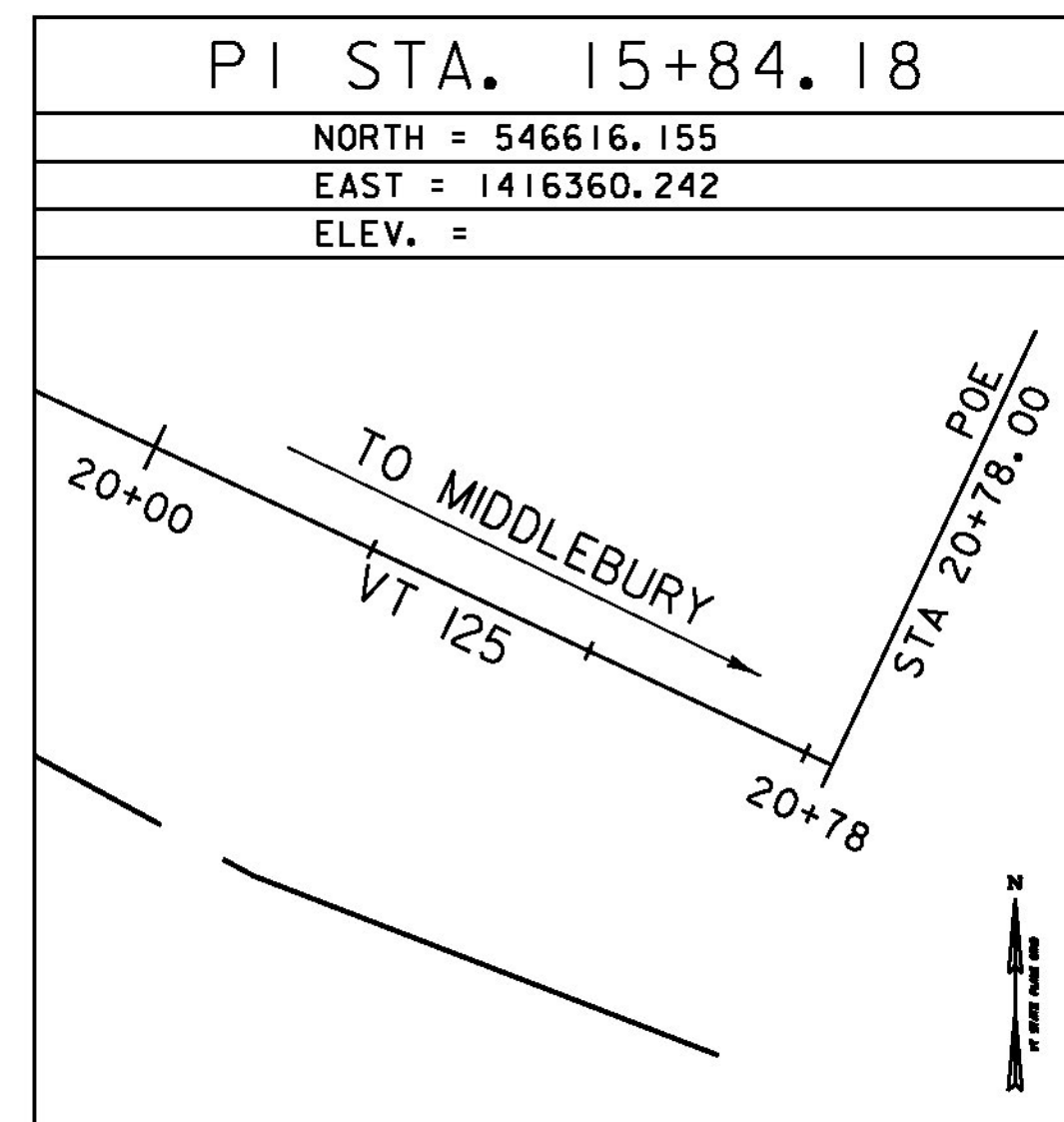
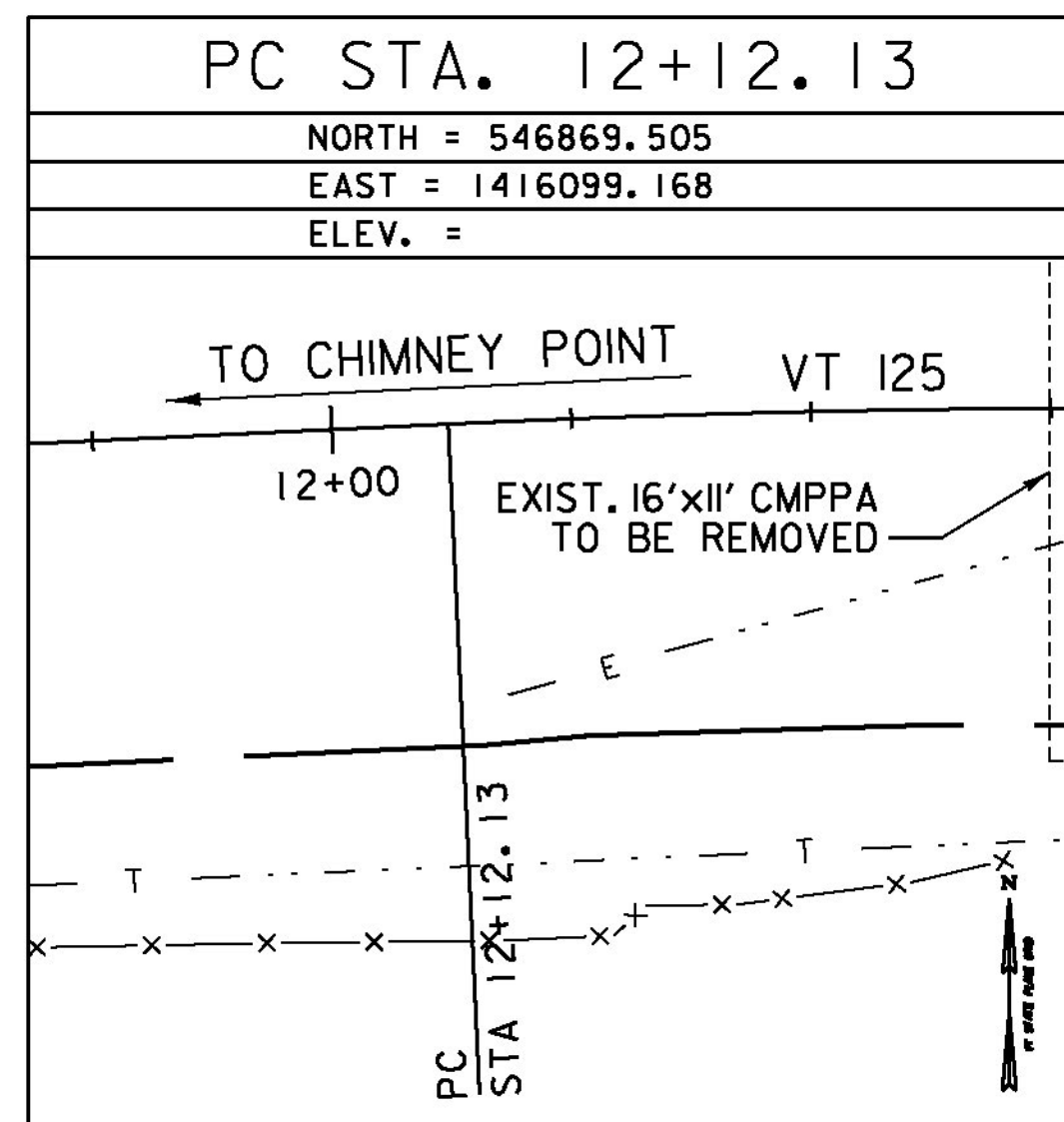
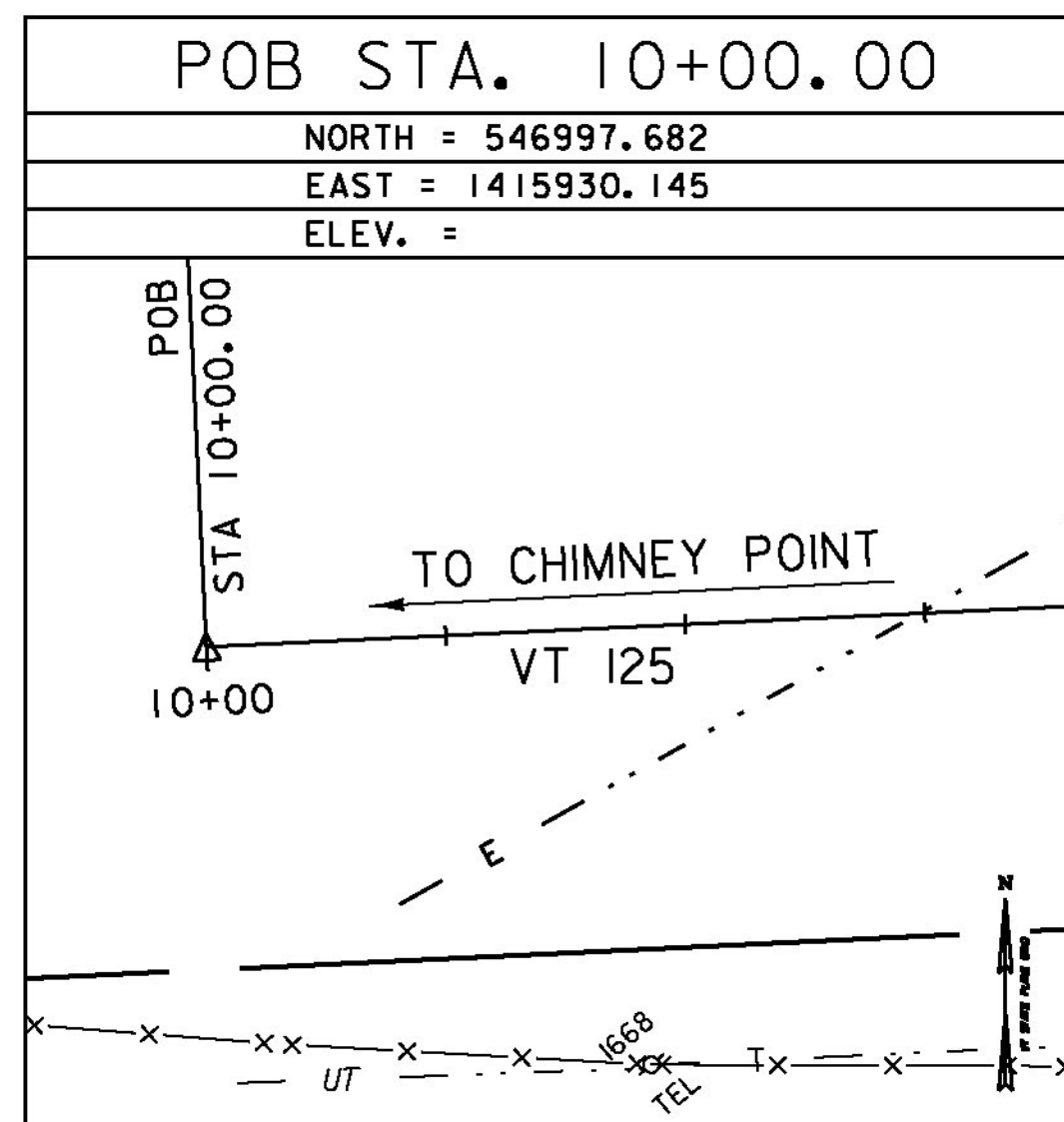
GENERAL LOCATION, BRIDPORT, VERMONT.
 TO REACH FROM THE INTERSECTION OF VT. ROUTES 22A AND 125 WEST IN BRIDPORT GO WEST ALONG VT. ROUTE 125 FOR 0.9 MI (1.4 KM) TO THE MARK ON THE RIGHT. IT IS ABOUT 0.15 MI (0.24 KM) EAST OF THE VT. ROUTE 125 BRIDGE OVER THE EAST BRANCH DEAD CREEK. THE MARK IS SET 0.1 M (0.3 FT) BELOW THE GROUND SURFACE IN THE TOP OF A 30 CM (12") DIAMETER CONCRETE MONUMENT SET 1.4 M (4.6 FT) DEEP. IT IS 4.6 M (15.1 FT) NORTH OF AND ABOUT 0.3 M (1.0 FT) LOWER THAN THE NORTH EDGE OF PAVEMENT OF VT. ROUTE 125, 20.4 M (66.9 FT) NORTHEAST OF UNDERGROUND TELEPHONE BOX NO. L11/7, 44.1 M (144.7 FT) SOUTHEAST OF A 90 CM OAK, AND 0.5 M (1.6 FT) SOUTH OF A WIRE FENCE AND A FIBERGLASS WITNESS POST.

TRAVERSE TIES



* MAIN TRAVERSE COMPLETED 1/25/2012 BY L. ORVIS P.C. & G. HITCHCOCK

ALIGNMENT TIES



DATUM	
VERTICAL	NAVD 88
HORIZONTAL	NAD 83 (96)
ADJUSTMENT	COMPASS

PROJECT NAME: BRIDPORT
 PROJECT NUMBER: STP CULV(29)

FILE NAME: zllc2641te_br2.dgn
 PROJECT LEADER: M. CHENETTE
 DESIGNED BY: J. HUNGERFORD
 SURVEY CONTROL AND TIES - BR2

PLOT DATE: 8/22/2014
 DRAWN BY: L. BUXTON
 CHECKED BY: M. CHENETTE
 SHEET 13 OF 57

