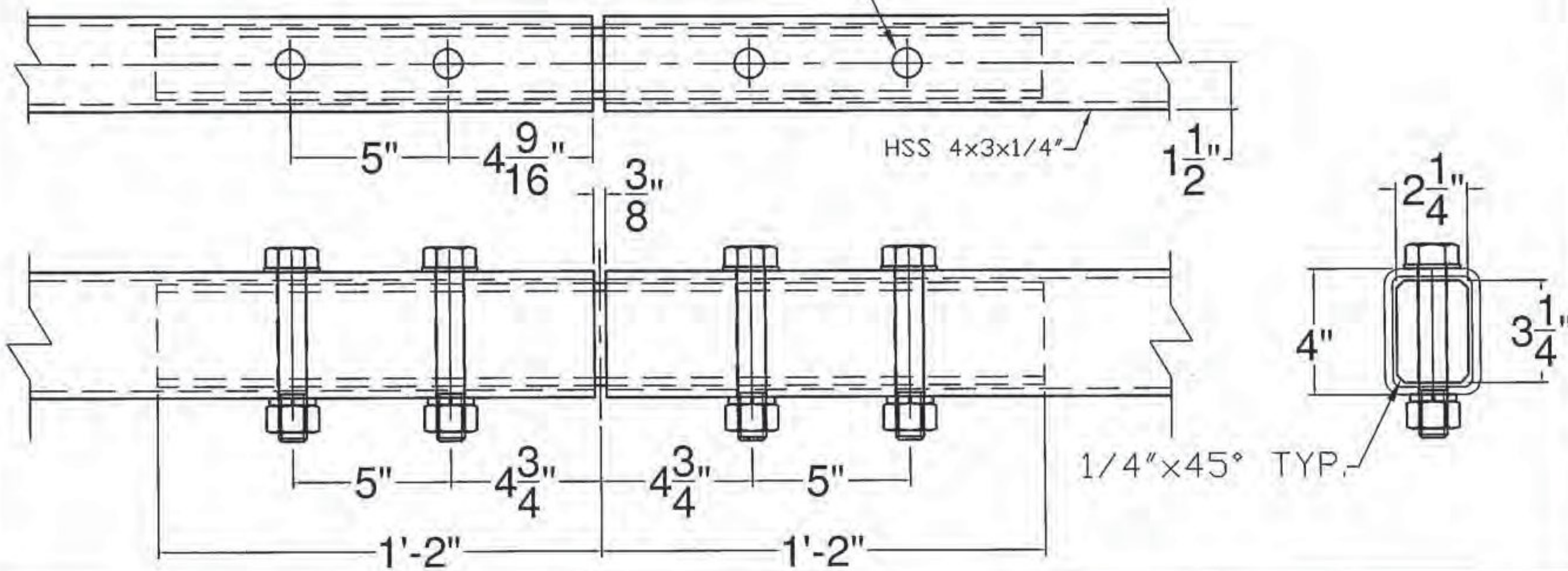


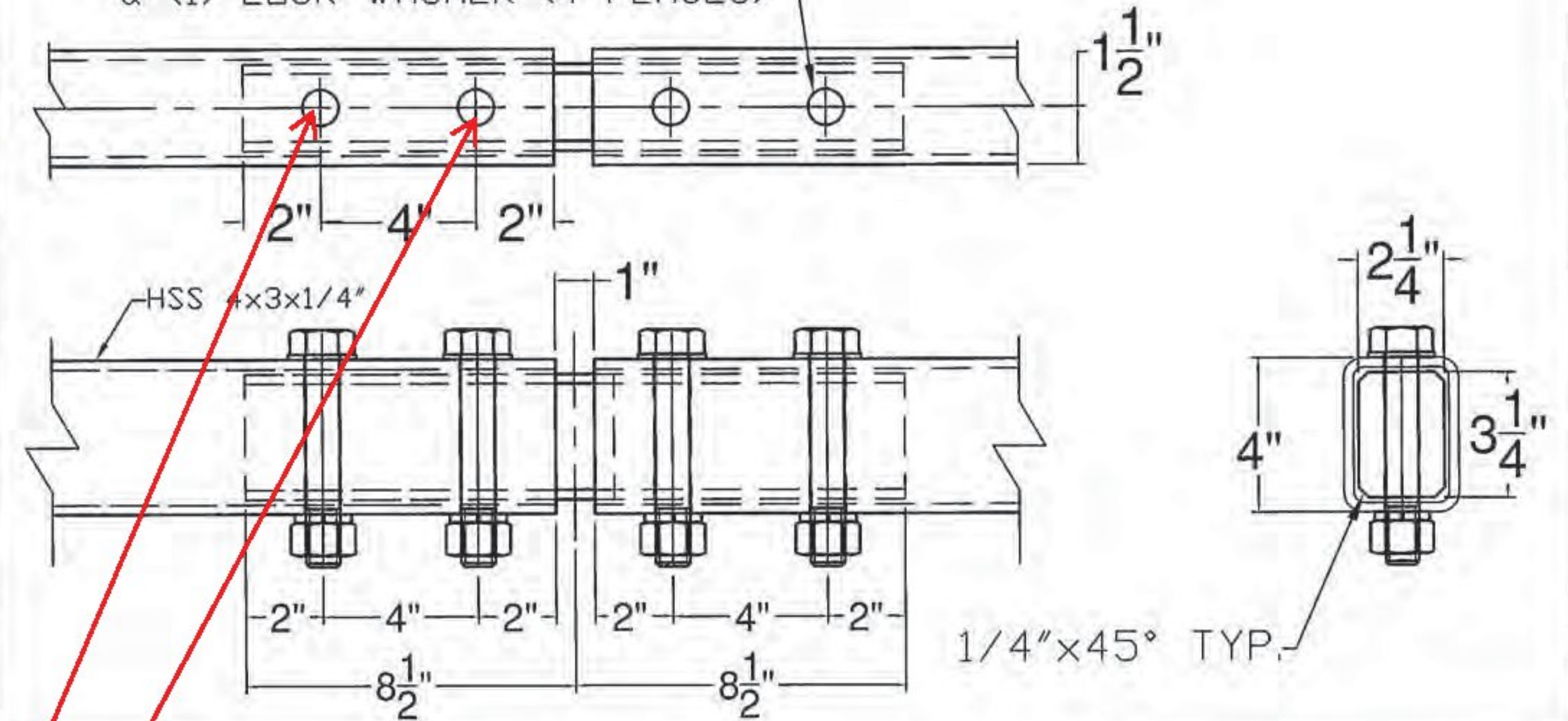
Ø15/16" THRU TUBE & SPLICE BAR,  
Ø7/8"X5 1/2" HEX BOLT & NUT,  
W/ (1) PLAIN HARDENED WASHER &  
(1) LOCK WASHER (4 PLACES)

TOP RAIL FIXED SPLICE DETAIL



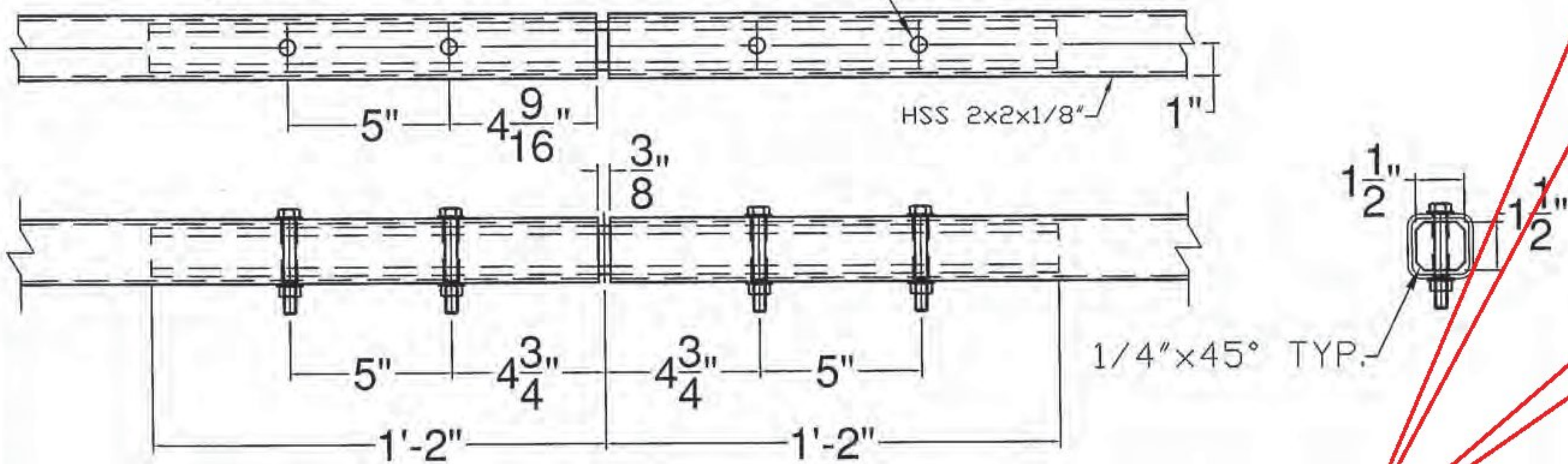
Ø15/16" THRU TUBE & SPLICE BAR,  
Ø7/8"X5 1/2" HEX BOLT & NUT,  
W/ (1) PLAIN HARDENED WASHER &  
(1) LOCK WASHER (4 PLACES)

TOP RAIL EXPANSION SPLICE DETAIL



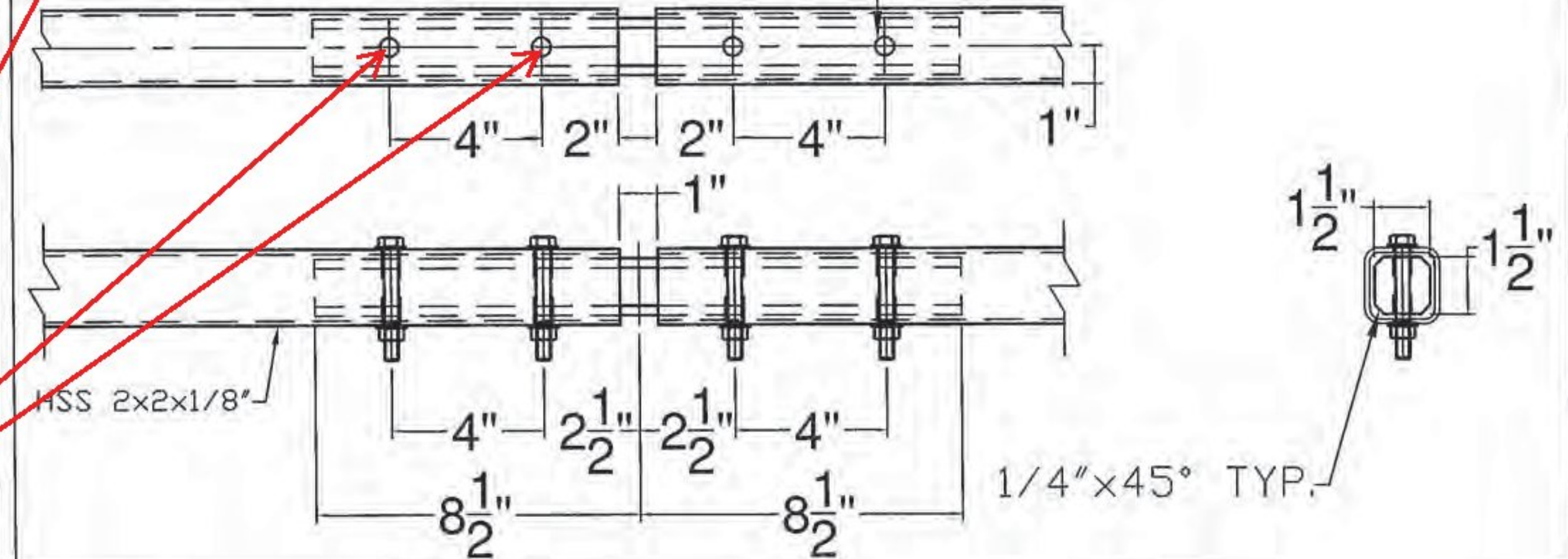
Ø1/2" THRU TUBE & SPLICE BAR,  
Ø3/8"X3" HEX BOLT & NUT,  
W/ (1) PLAIN HARDENED WASHER &  
(1) LOCK WASHER (4 PLACES)

BOTTOM RAIL FIXED SPLICE DETAIL



Ø1/2" THRU TUBE & SPLICE BAR,  
Ø3/8"X3" HEX BOLT & NUT,  
W/ (1) PLAIN HARDENED WASHER &  
(1) LOCK WASHER (4 PLACES)

BOTTOM RAIL EXPANSION SPLICE DETAIL



**T.Y. LIN INTERNATIONAL**

THE STAMPED DOCUMENTS ARE HEREBY:

- APPROVED
- APPROVED AS NOTED
- REVISE AND RESUBMIT

SEE TRANSMITTAL FOR ADDITIONAL INFORMATION AS APPLICABLE

THIS REVIEW IS FOR GENERAL CONFORMANCE WITH DESIGN CONCEPT ONLY. ANY DEVIATION FROM THE PLANS OR SPECIFICATIONS NOT CLEARLY NOTED BY THE CONTRACTOR HAS NOT BEEN REVIEWED. REVIEW BY THE ENGINEER SHALL NOT RELIEVE THE CONTRACTOR OF THE CONTRACTUAL RESPONSIBILITY FOR ANY ERRORS OR DEVIATION FROM THE CONTRACT REQUIREMENTS.

RICK HEBERT  
REVIEWER  
1/16/2015  
DATE

Vermont Agency of Transportation

**RECEIVED**

ON: December 29, 2014

and Checked for  
**CONFORMANCE**

BY: TAS DATE: 01/20/2015

Provide 15/16" x 2" slotted holes in top rail splice bar and 1/2" x 1 1/2" slotted holes in bottom rail splice bars to accommodate movements at expansion rail splices. (Typ)

ITEM #: 525.45

STRUCTURAL STEEL TO COMPLY W/ ASTM A6

TOLERANCE UNLESS OTHERWISE NOTED:  
FRACTIONS = ± 1/16"  
ANGLES = ± 1/2"  
DIAMETERS = ± 1/32"

SHEET 2 OF 3

**BRIDGE RAIL DETAILS SHEET**

VT 121 (CL 2, TH 1) RURAL MAJOR COLLECTOR, BRIDGE 11R  
ROCKINGHAM, PROJECT BR 0126(12), TOWN OF ROCKINGHAM, WINDHAM COUNTY, VT.

R NO.	DATE	DESCRIPTION	BY	R NO.	DATE	DESCRIPTION	BY

DRAWN	E.P.	12/19/14
CHECKED	D.L.	12/19/14
APPROVED		
SCALE	SCHEMATIC	
DRAWING NO. FR L - ROCKINGHAM		

**ELDERLEE, INC.**  
OAKS CORNERS, NEW YORK 14518  
E-Mail: [dlong@elderlee.com](mailto:dlong@elderlee.com) / [epesk@elderlee.com](mailto:epesk@elderlee.com)  
Tel: 315-789-6670 Fax: 315-789-6615