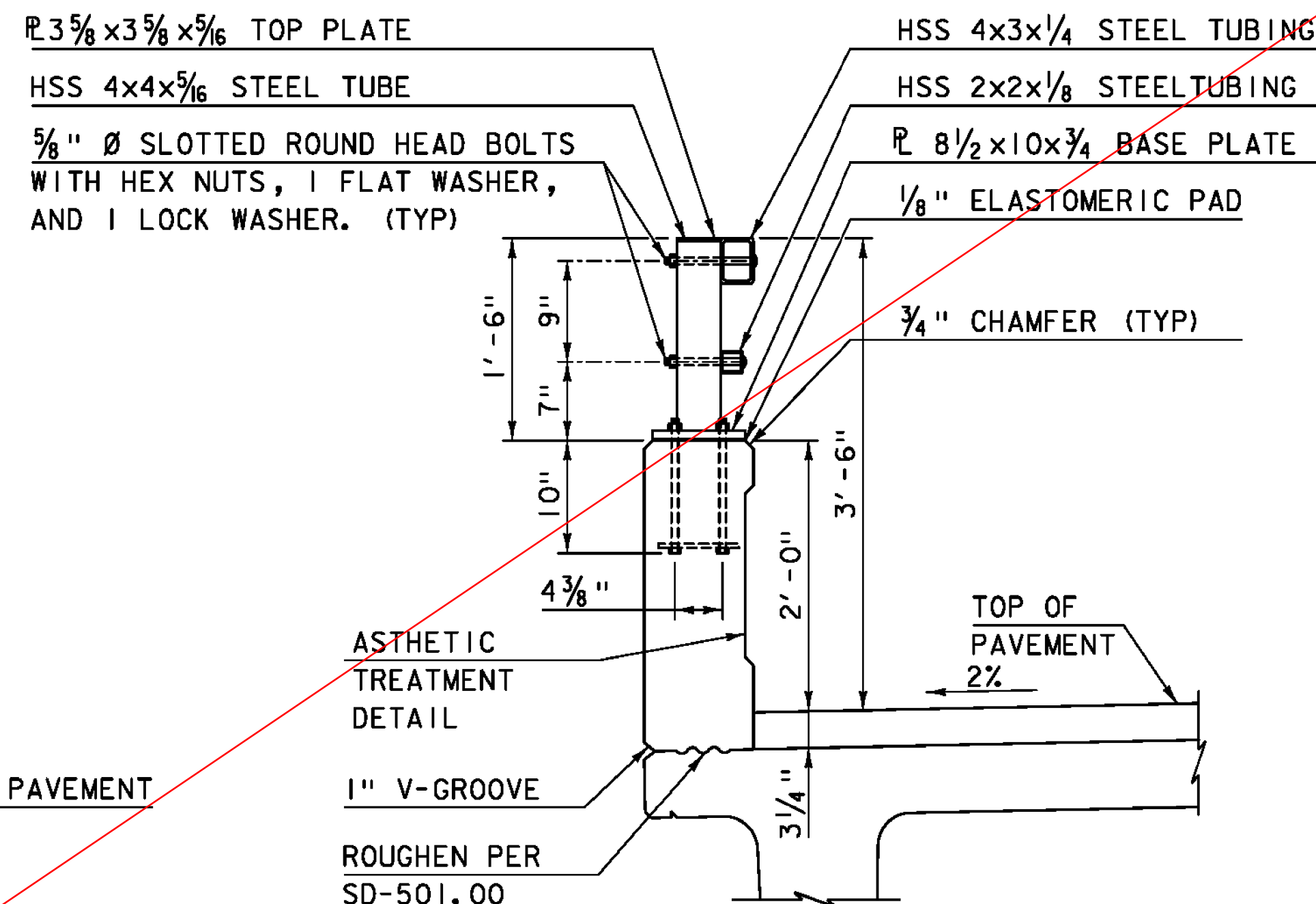


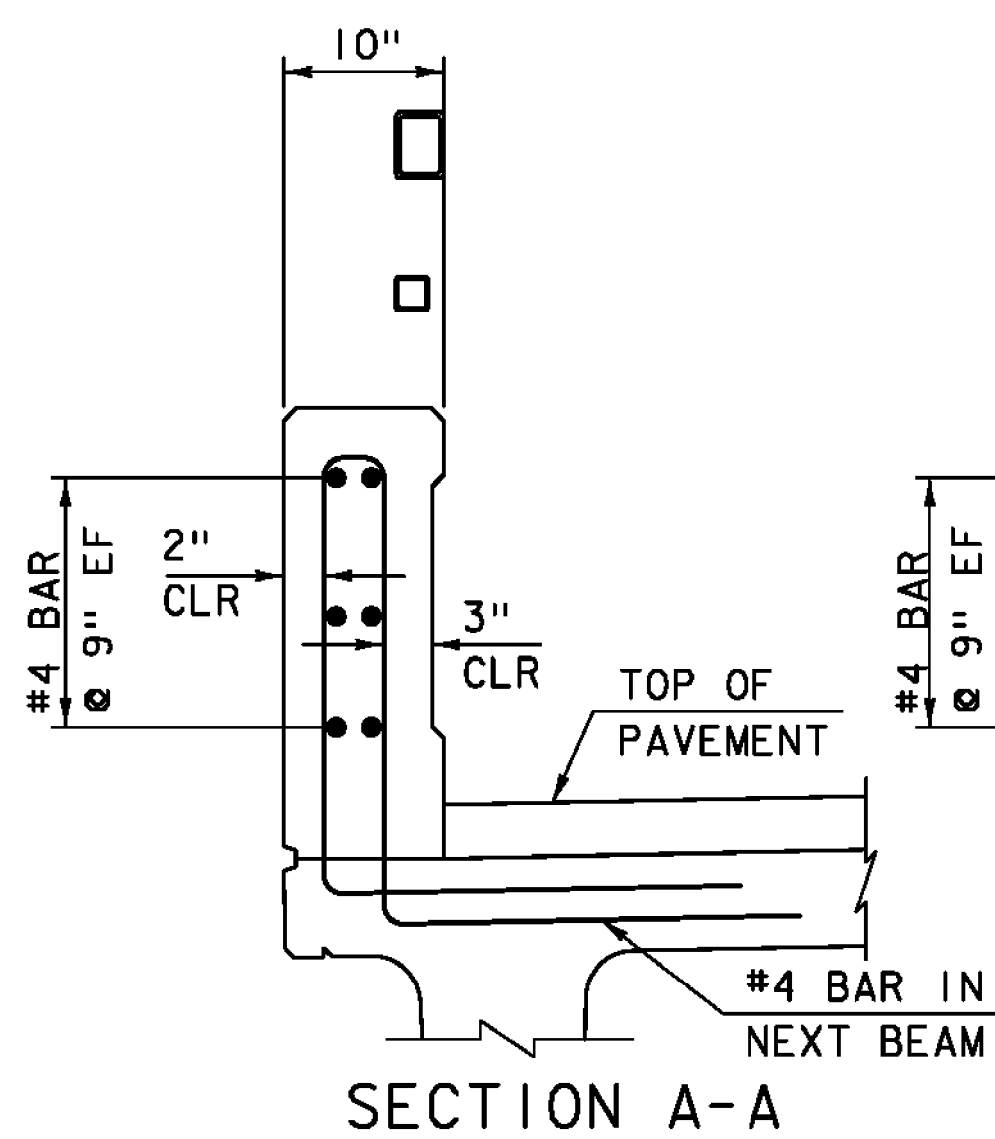
RAILING & END WALL APPROACH

SCALE 1"=1'-0"



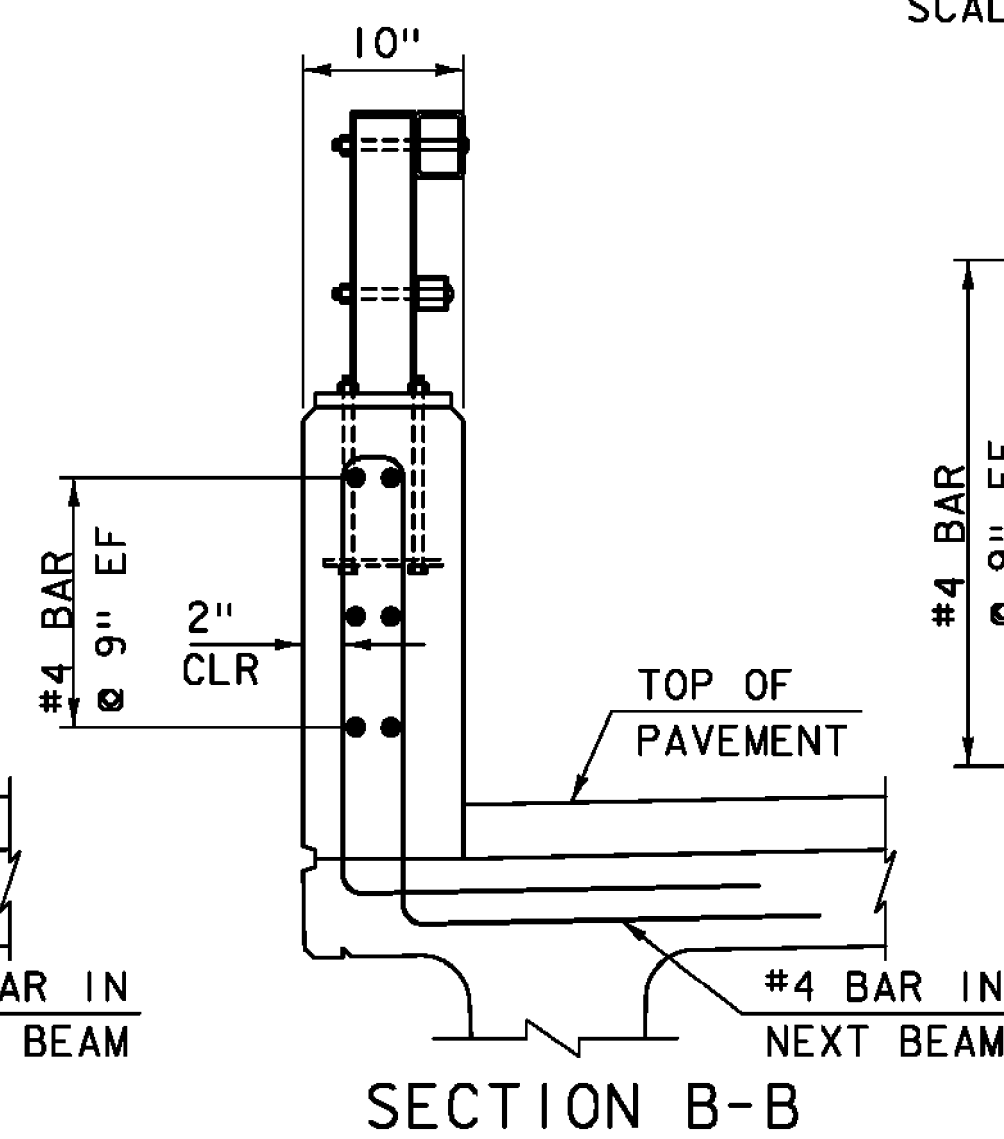
RAIL TYPICAL SECTION

SCALE 1"=1'-0"



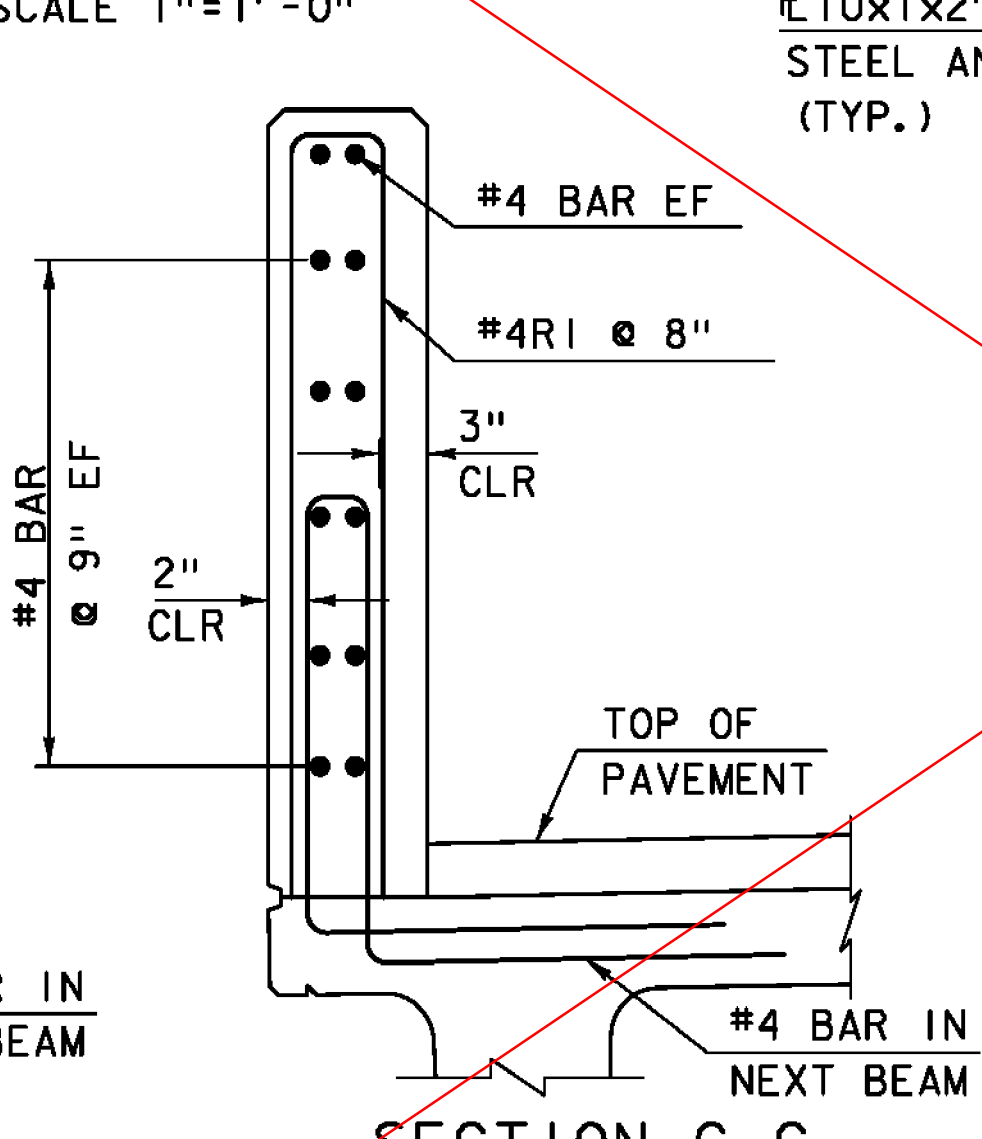
SECTION A-A

SCALE 1"=1'-0"



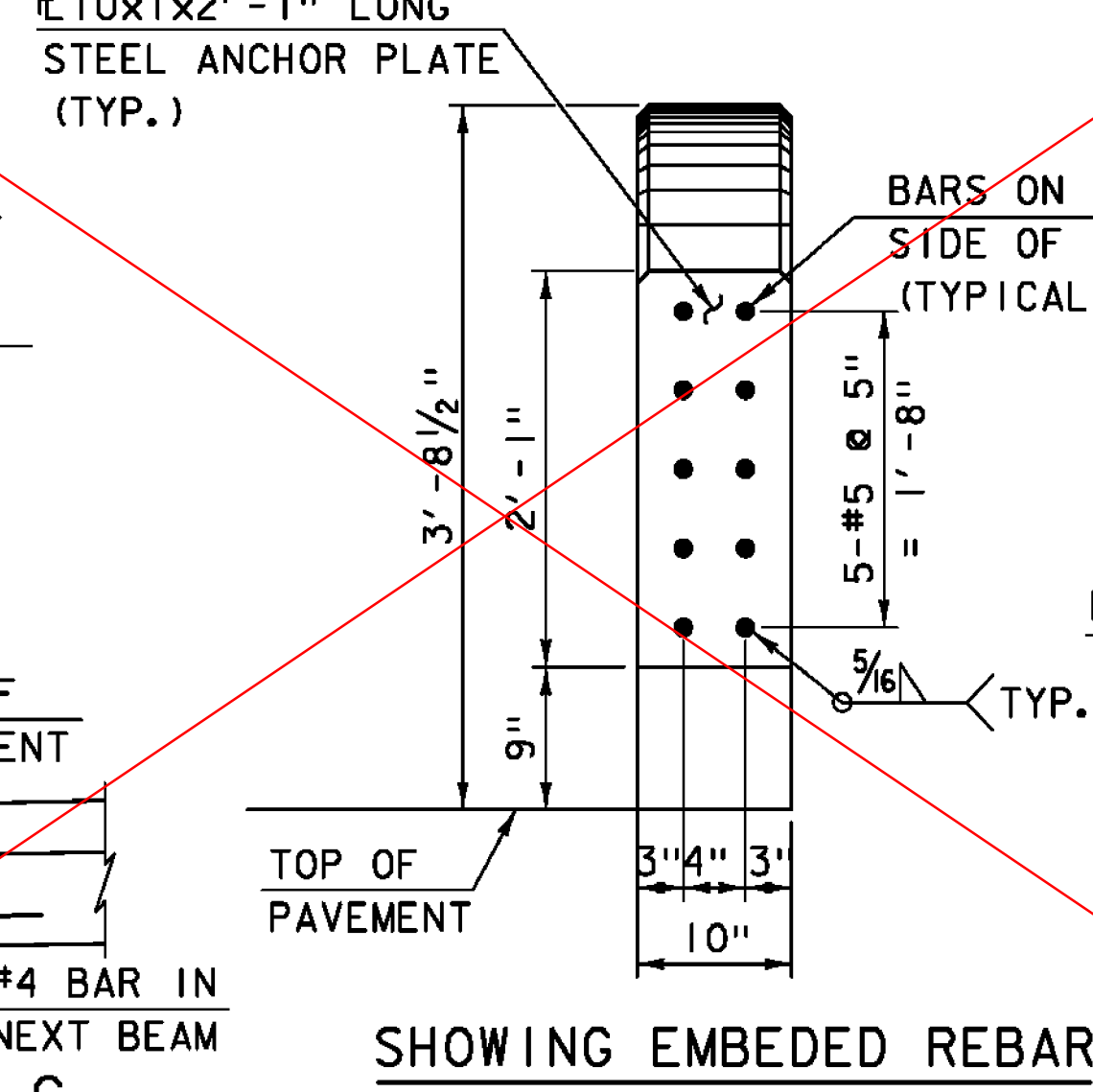
SECTION B-B

SCALE 1"=1'-0"



SECTION C-C

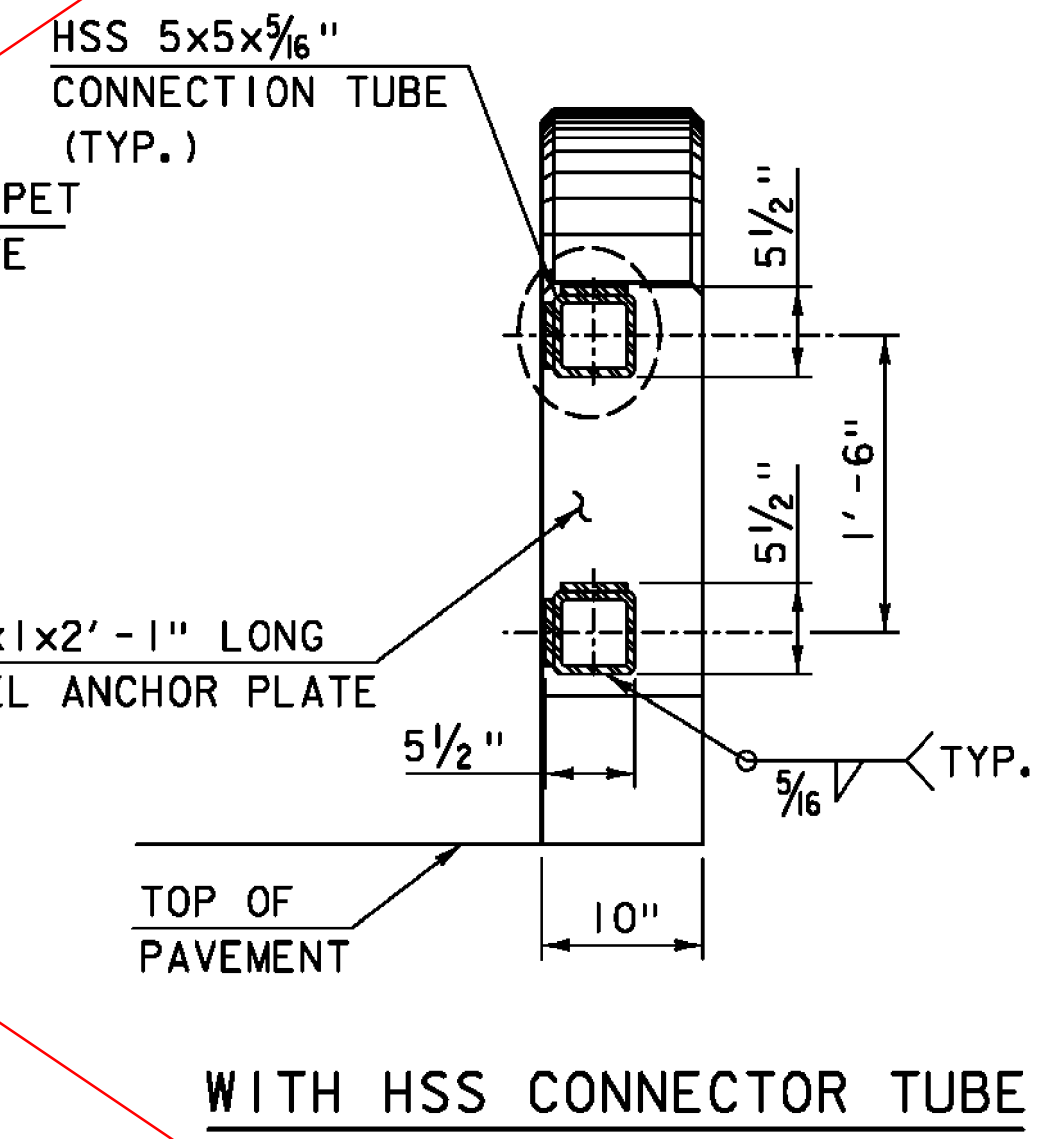
SCALE 1"=1'-0"



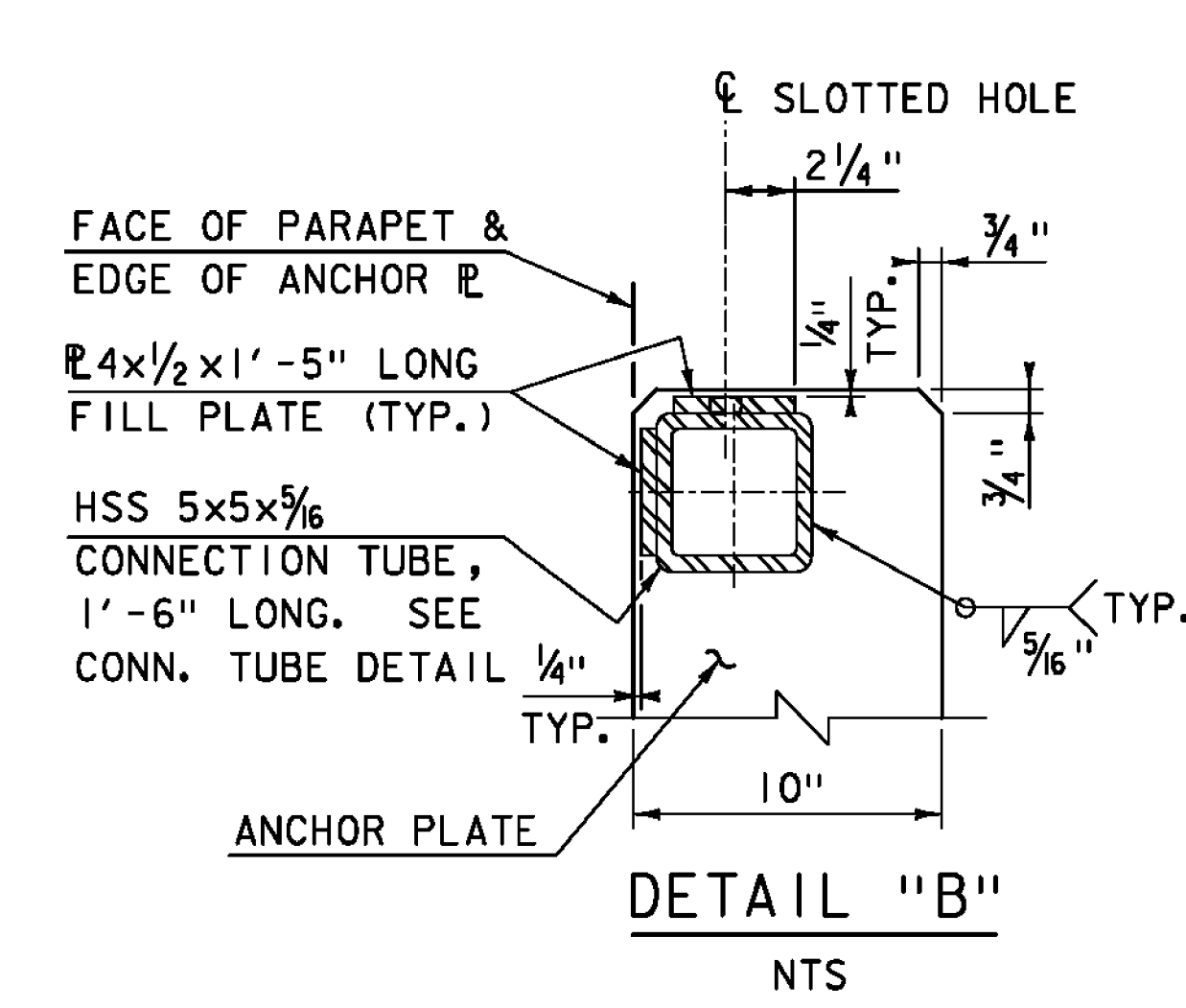
SHOWING EMBEDDED REBAR

VIEW D-D

SCALE 1"=1'-0"

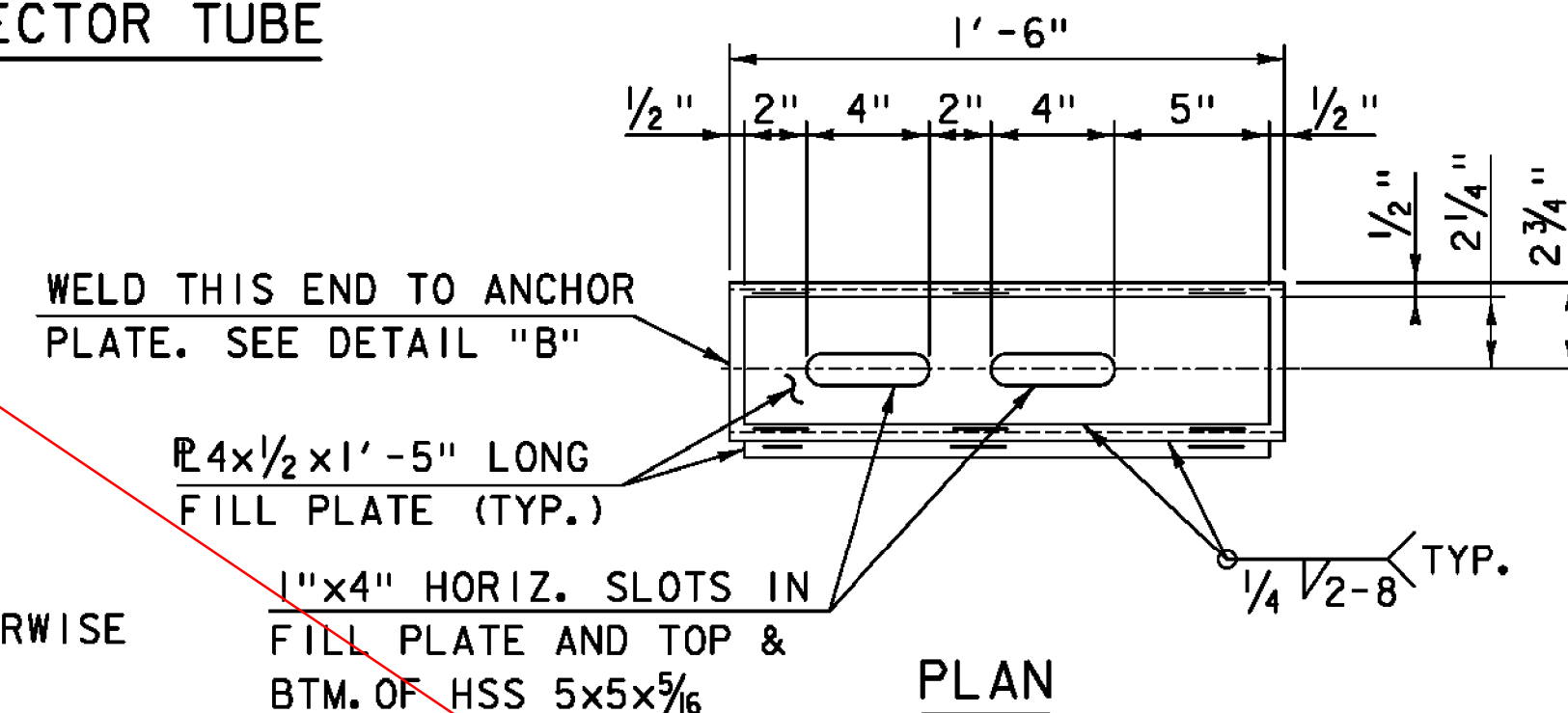


WITH HSS CONNECTOR TUBE



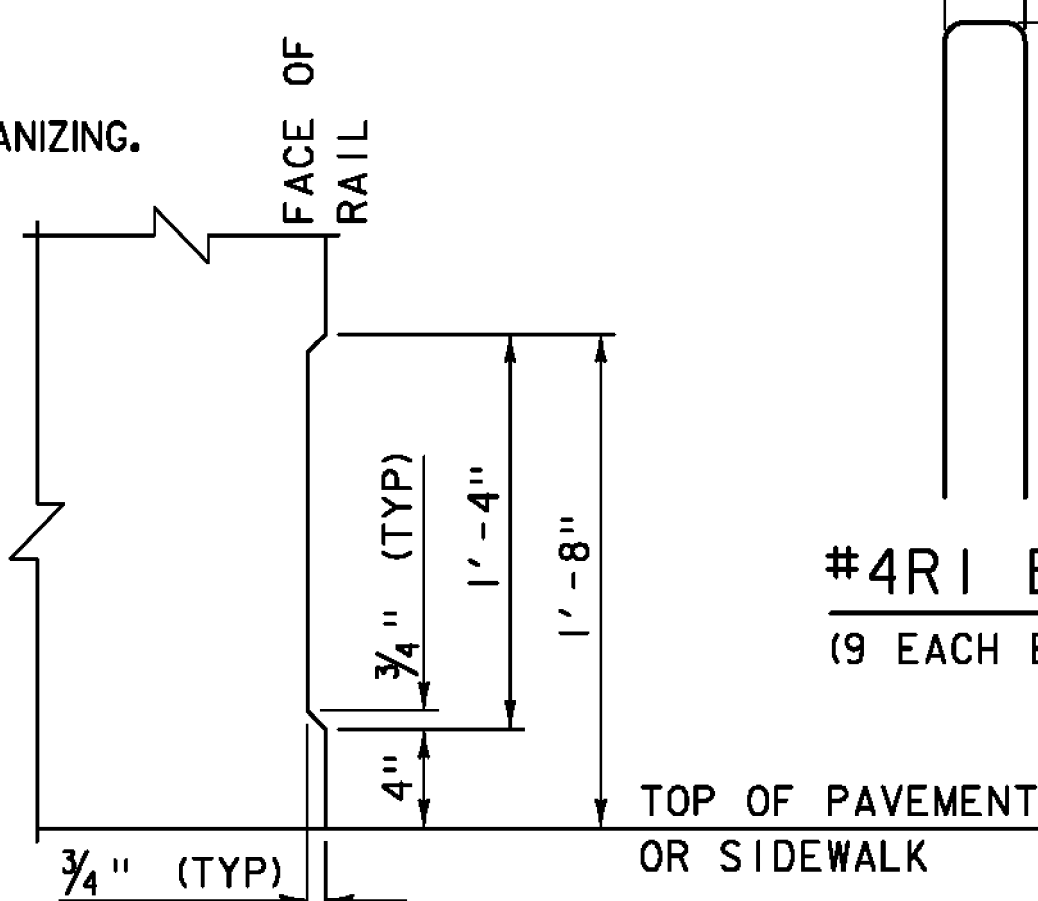
DETAIL "B"

NTS



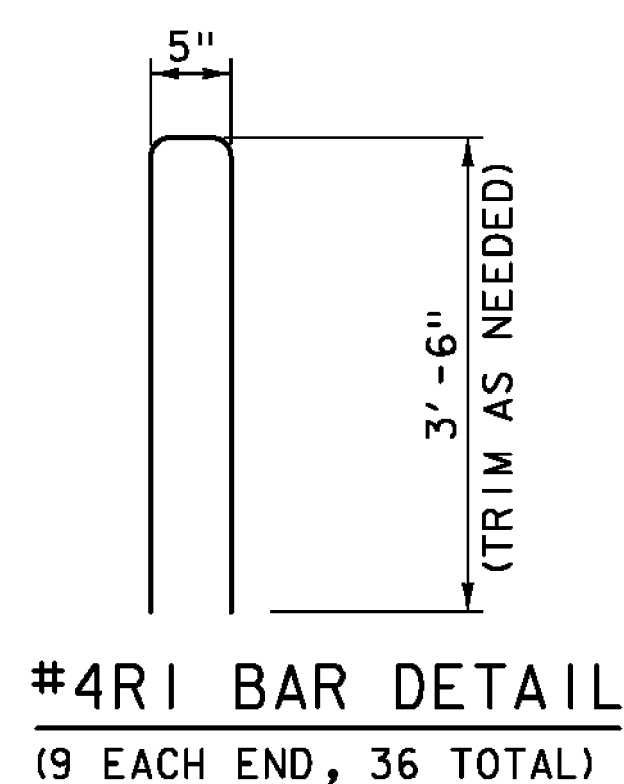
CONNECTION TUBE DETAIL

NTS



ASTHETIC TREATMENT DETAIL

SCALE 1 1/2"=1'



#4R1 BAR DETAIL

(9 EACH END, 36 TOTAL)

NOTES:

- BRIDGE RAIL SHALL HAVE A RUBBED FINISH IN ACCORDANCE WITH SECTION 501.
- HOLES AND RECESSES ARE TO BE FORMED OR CORED, PERCUSSION DRILLING IS NOT ALLOWED.
- ALL STEEL COMPONENTS SHALL BE COATED BLACK IN ACCORDANCE WITH ASTM D7803 FOLLOWING GALVANIZING.
- ALL REINFORCEMENT SHALL BE LEVEL II.
- ALL LONGITUDINAL BARS SHALL HAVE A MINIMUM LAP LENGTH OF 2'-0".
- ALL WORK AND MATERIALS SHALL CONFORM TO SECTION 525.
- PRIOR TO GALVANIZING THE ASSEMBLED POST, GRIND ALL EDGES TO A MINIMUM RADIUS OF 1/16".
- ALL POSTS SHALL BE SET NORMAL TO GRADE.
- SECTIONS OF RAIL TUBE SHALL BE ATTACHED TO A MINIMUM OF TWO BRIDGE POSTS AND PREFERABLY TO AT LEAST 4 POSTS.
- HOLES IN RAILS FOR TUBE ATTACHMENT MAY BE FIELD-DRILLED. HOLES SHALL BE COATED WITH AN APPROVED ZINC-RICH PAINT PRIOR TO INSTALLATION.
- BOLTS SHALL BE TORQUED SNUG TIGHT (APPROXIMATELY 100 FT-LB).
- RAIL TUBES SHALL BE ATTACHED USING 5/8" FULL DIAMETER BODY ASTM A 449 (TYPE I) ROUND HEAD BOLTS INSERTED THROUGH THE FACE OF THE TUBE.
- SEE STANDARD DRAWING G-1 FOR DETAILS OF DELINEATORS. A DELINEATOR SHALL BE INSTALLED AT 30 FOOT SPACING OR THE NEAREST POST. WHITE IS TO BE INSTALLED ON THE DRIVER'S RIGHT. PAYMENT FOR DELINEATORS SHALL BE INCIDENTAL TO OTHER ITEMS.
- SEE "GUARDRAIL APPROACH AND GUARDRAIL LAYOUT DETAILS" SHEET FOR ADDITIONAL EAST APPROACH CONNECTION TUBE DETAILS.

NOTE:

- NF = NEAR FACE
 FF = FAR FACE
 EF = EACH FACE
 2'-2" BAR LAP UNLESS OTHERWISE SPECIFIED ON THE PLANS.

WELD THIS END TO ANCHOR PLATE. SEE DETAIL "B"

#4x1/2x1'-5" LONG FILL PLATE (TYP.)

1"x4" HORIZ. SLOTS IN FILL PLATE AND TOP & BTM. OF HSS 5x5x5/16

TYLIN INTERNATIONAL

PROJECT NAME: ROCKINGHAM
 PROJECT NUMBER: BRF 0126(12)

FILE NAME: z10j072bdr_rail_01.dgn
 PROJECT LEADER: R. HEBERT
 DESIGNED BY: S. KELLER
 BRIDGE RAILING DETAILS (1 OF 3)

PLOT DATE: 8/26/2014
 DRAWN BY: D. AXTELL
 CHECKED BY: T. POULIN
 SHEET 41 OF 69