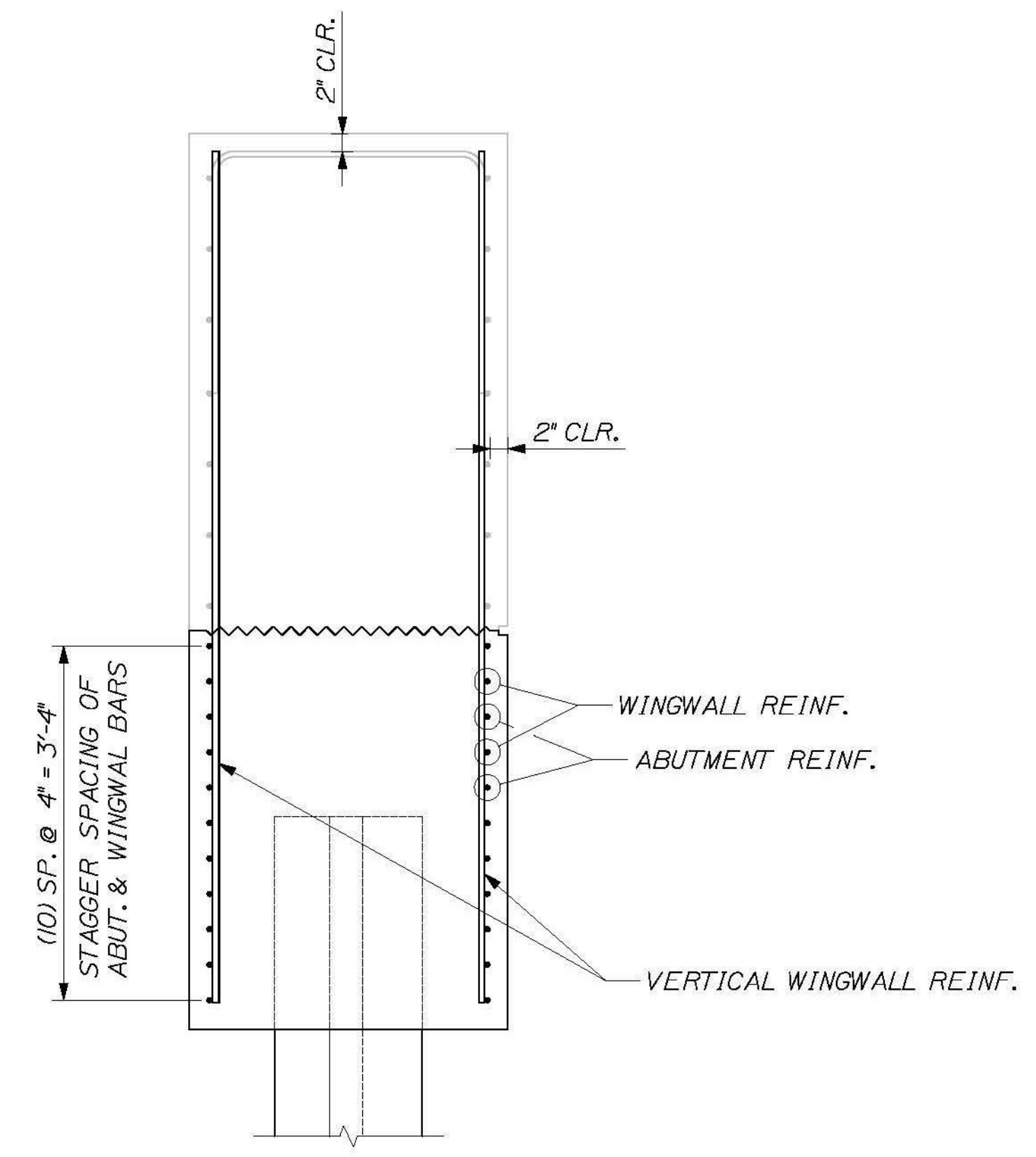


ABUTMENT REINFORCING SECTION
3/4" = 1'-0"



WINGWALL REINFORCING SECTION
3/4" = 1'-0"



CALDERWOOD ENGINEERING, ETC.
STRUCTURAL ENGINEERING • DETAILING SERVICES
222 RIVER RD., RICHMOND, ME 04357 PH/FX (207)737-2007/(207) 737-2008
PREPARED FOR:
COLD RIVER BRIDGES, LLC
CEE 106-BR-14

DESIGN-DETAILED	BY	DATE
CHECKED-REVIEWED	ETC	2014
REVISIONS 1		
REVISIONS 2		
REVISIONS 3		
REVISIONS 4		
FIELD CHANGES		

P.E. NUMBER _____
DATE: _____

VE SUPER. DESIGN
ROCKINGHAM VT. BR# 0126 (12)
ABUTMENT SECTIONS

SHEET NUMBER
36