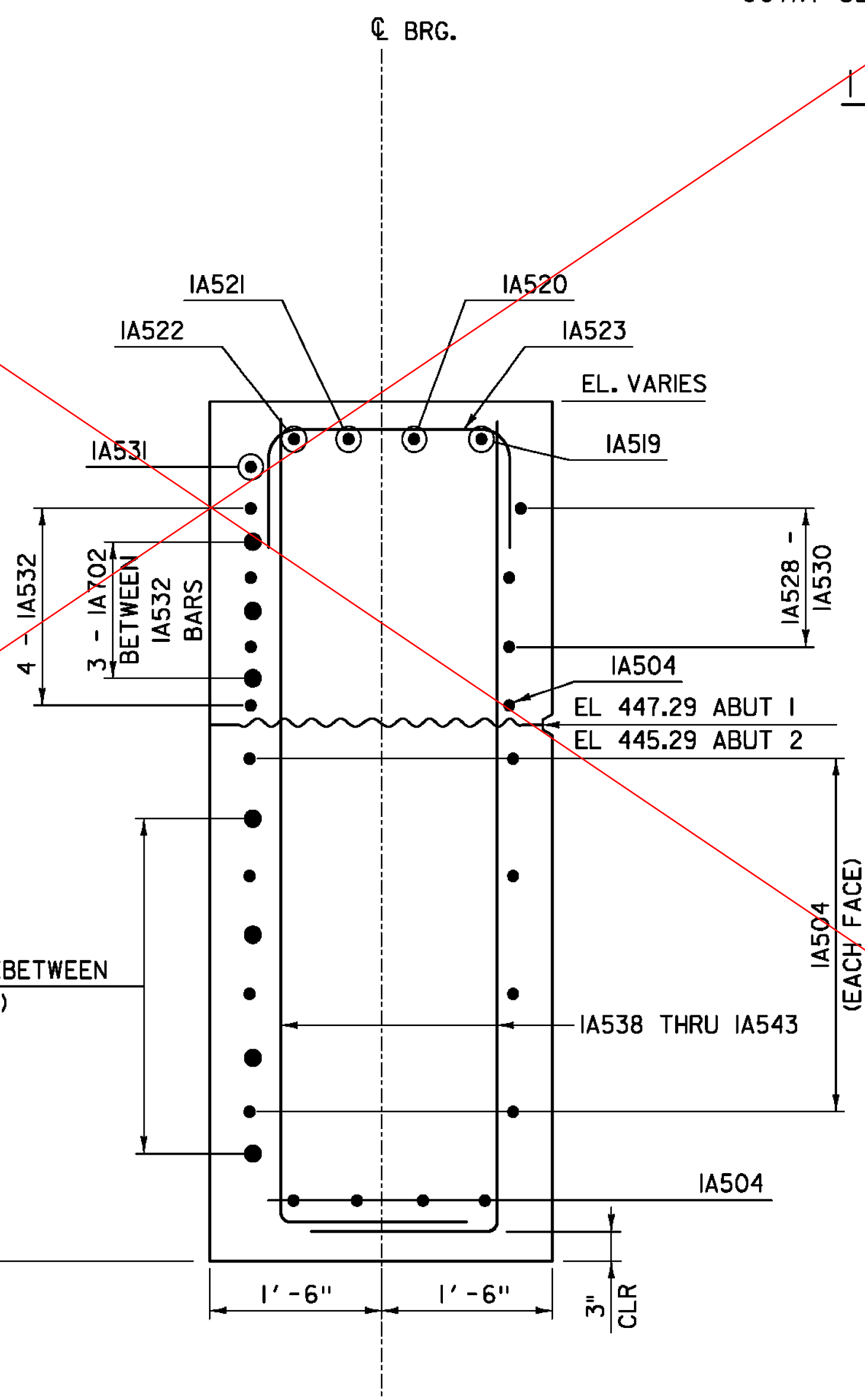
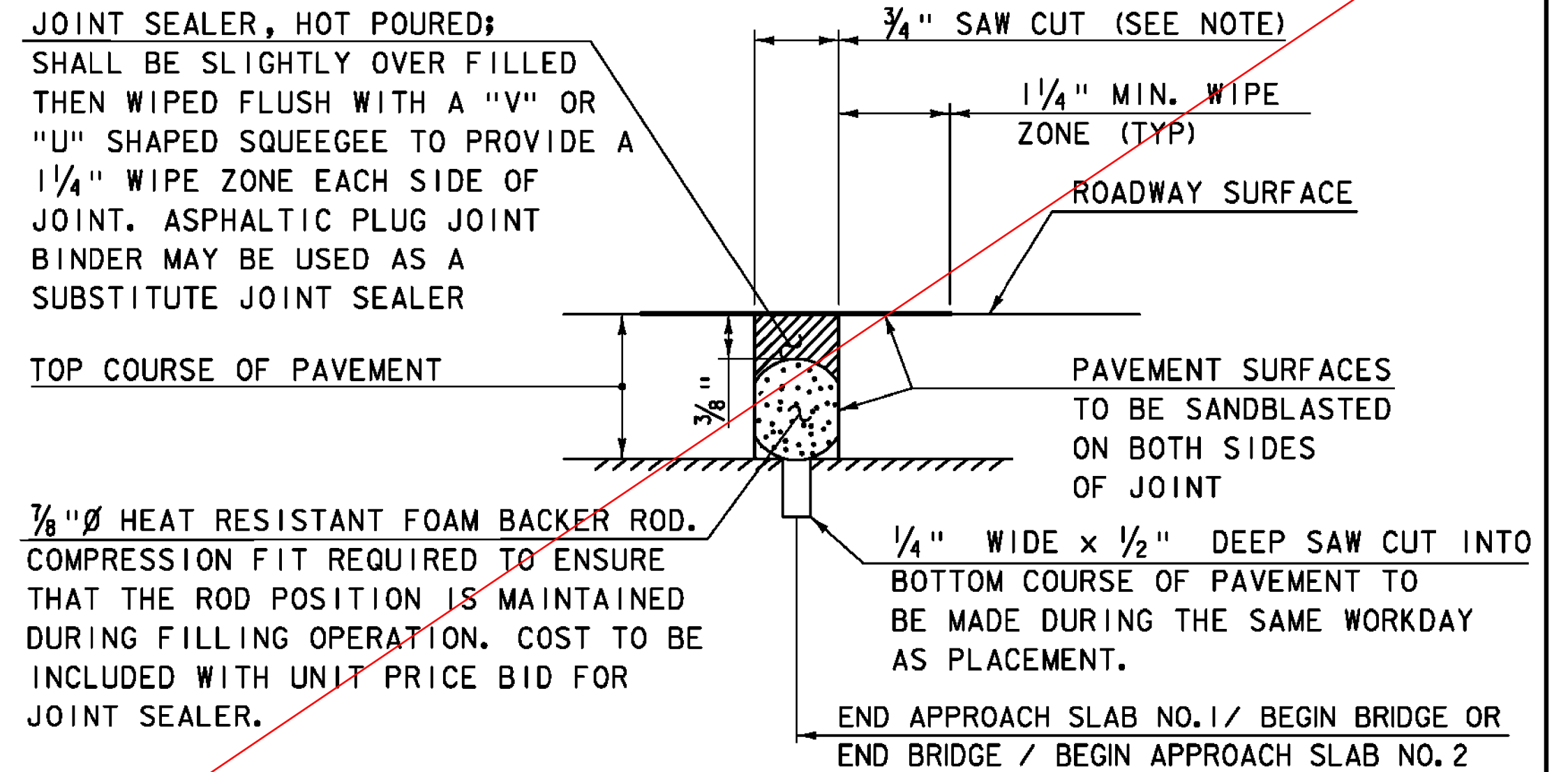


ABUTMENT TYPICAL SECTION
 NOT TO SCALE
 (REINFORCEMENT FOR ABUTMENT 1 SHOWN,
 REINFORCEMENT FOR ABUTMENT 2 SIMILAR.)

• PLAIN ELASTOMERIC PAD SHALL HAVE A HARDNESS OF 60 (SHORE "A" DUROMETER), AND PAYMENT SHALL BE MADE UNDER ITEM 531.16.



WINGWALL TYPICAL SECTION
 NOT TO SCALE
 (REINFORCEMENT FOR NW WINGWALL SHOWN,
 REINFORCEMENT FOR OTHER WINGWALLS SIMILAR.)



ITEM 524.11, "JOINT SEALER, HOT POURED"
SAWED PAVEMENT JOINT DETAIL
 N. T. S.

NOTE: JOINT IS TO BE LOCATED ACCURATELY BY STRING LINING, OR OTHER MEANS, PRIOR TO PAVING, SO THAT THE SAW CUTS WILL BE MADE DIRECTLY OVER THE END OF CONCRETE DECK. JOINT SHALL BE CUT DRY IN A SINGLE PASS AND BE SEALED WITHIN 24 HOURS OR PRIOR TO EXPOSURE TO TRAFFIC. JOINT SHALL BE CLEANED PRIOR TO APPLYING THE JOINT SEALER.

TYLINTERNATIONAL	PROJECT NAME: ROCKINGHAM	PLOT DATE: 8/26/2014
	PROJECT NUMBER: BRF 0126(12)	DRAWN BY: D. AXTELL
	FILE NAME: z10j072bdr_abutsect.dgn	CHECKED BY: T. POULIN
	PROJECT LEADER: R. HEBERT	SHEET 36 OF 69
	DESIGNED BY: S. KELLER	
	ABUTMENT SECTIONS	