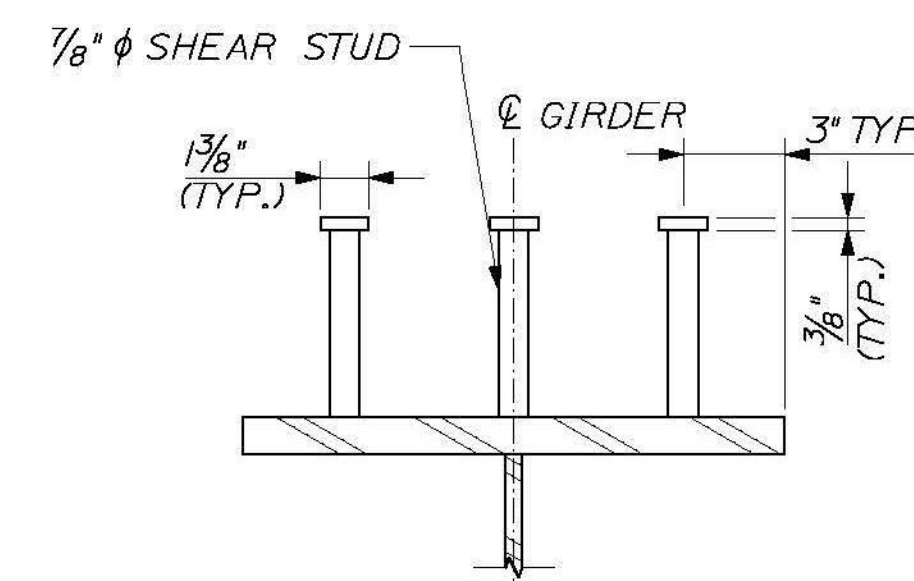


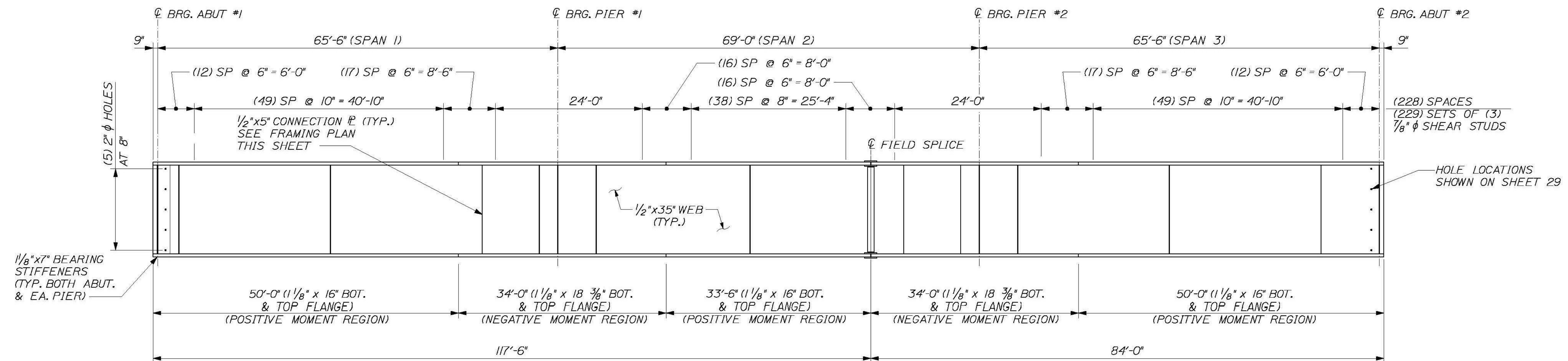
FRAMING PLAN  
3/12" = 1'-0"

**STRUCTURAL STEEL NOTES**

1. ALL STEEL SHALL BE ASTM A709 GRADE 50W
2. FLEMING BRACKETS OR SIMILAR FALSEWORK SHALL BE SPACED AS REQUIRED BY DESIGN, BUT SHALL BE LIMITED TO A MAXIMUM SPACING OF 4'-0". THE DESIGN OF FALSEWORK SHALL BE THE RESPONSIBILITY OF THE CONTRACTOR.
3. ANY BOLT HOLES IN THE WEBS OF FASCIA GIRDERS NO OTHERWISE FILLED SHALL BE FILLED WITH BUTTON HEAD OR HEX HEAD TYPE 3 BOLTS. THE BOLTS SHALL BE TIGHTENED IN ACCORDANCE WITH SUBSECTION 506.19 OF THE STANDARD SPECIFICATIONS.
4. ENDS OF THE GIRDERS SHALL BE VERTICAL IN THEIR FINAL POSITION.
5. DUE TO STABILITY CONCERNS AT THE ABUTMENTS DURING THE ERECTION OF THE SUPERSTRUCTURE, THE CONTRACTOR SHALL SUBMIT THE ERECTION PLAN A MINIMUM OF 30 WORKING DAYS PRIOR TO ERECTING THE SUPERSTRUCTURE.



SHEAR STUD CONNECTOR DETAIL  
2" = 1'-0"



GIRDER ELEVATION  
5/8" = 1'-0"

CALDERWOOD ENGINEERING, ETC.  
STRUCTURAL ENGINEERING & DETAILING SERVICES  
222 RIVER RD., RICHMOND, ME 04357 PH/FX (207) 737-2007 FAX (207) 737-2008  
PREPARED FOR: COLD RIVER BRIDGES, LLC  
DATE: CEE 106-BR-14

DESIGN-DETAILED	DATE	BY	DATE
CHECKED-REVIEWED	2014	ETC	
REVISIONS 1			
REVISIONS 2			
REVISIONS 3			
REVISIONS 4			
FIELD CHANGES			

VE SUPER. DESIGN  
ROCKINGHAM VT. BR# 0126 (12)  
STEEL GIRDER DETAILS (1 OF 3)

SHEET NUMBER  
27

