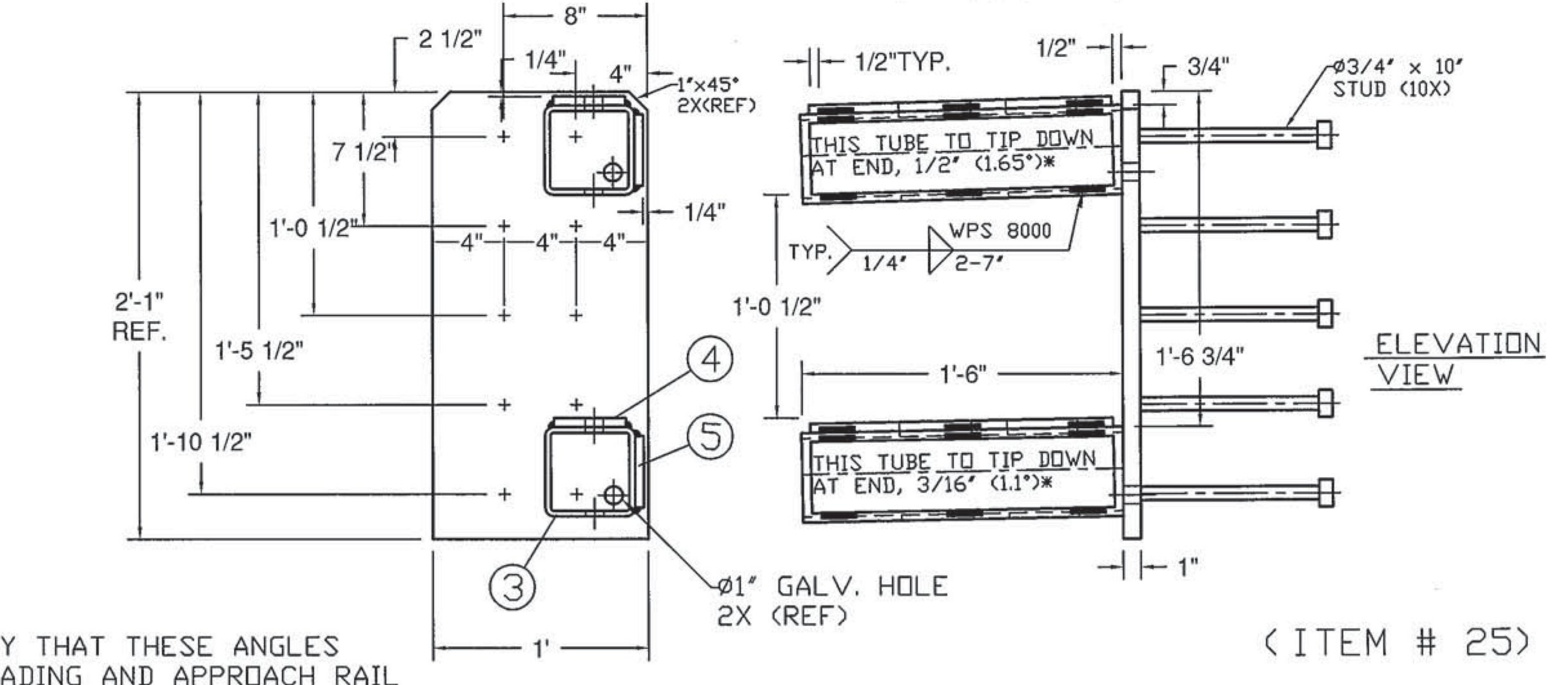
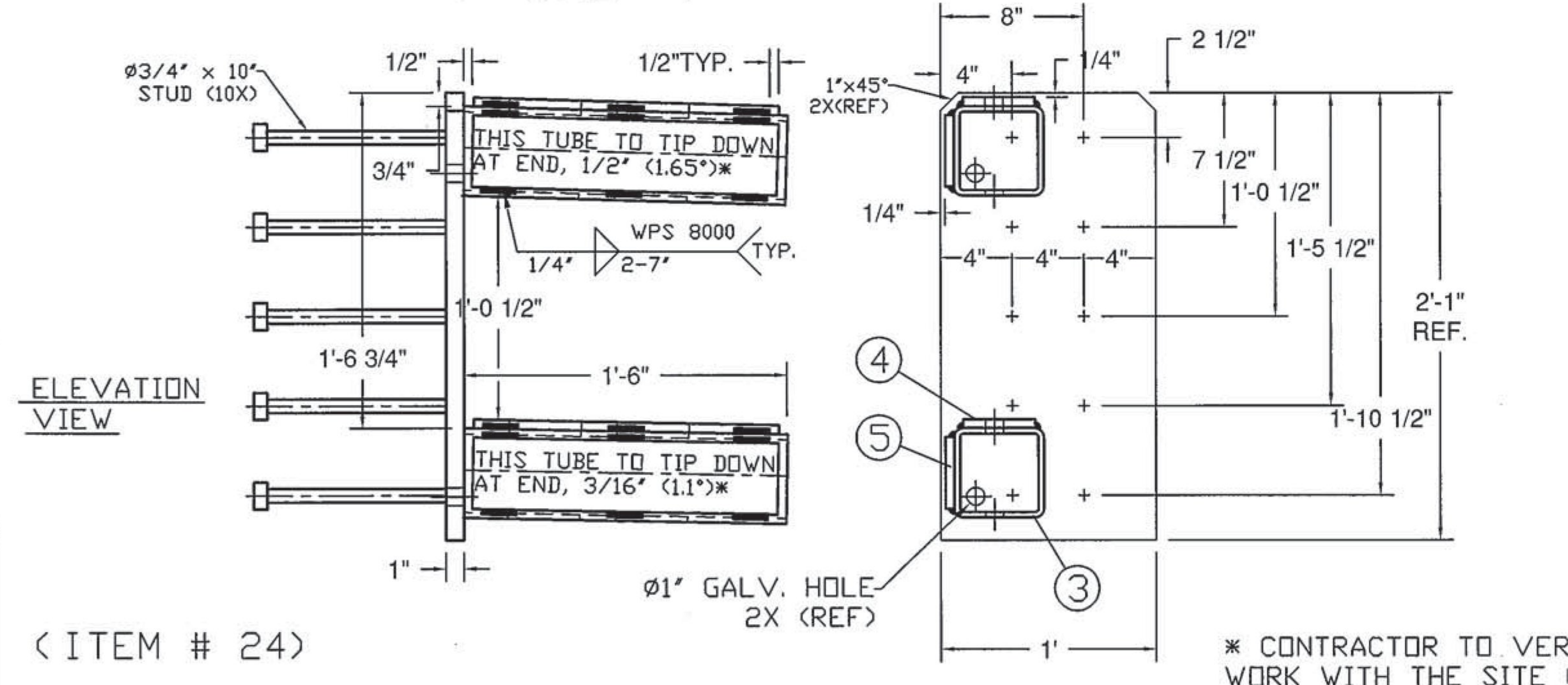
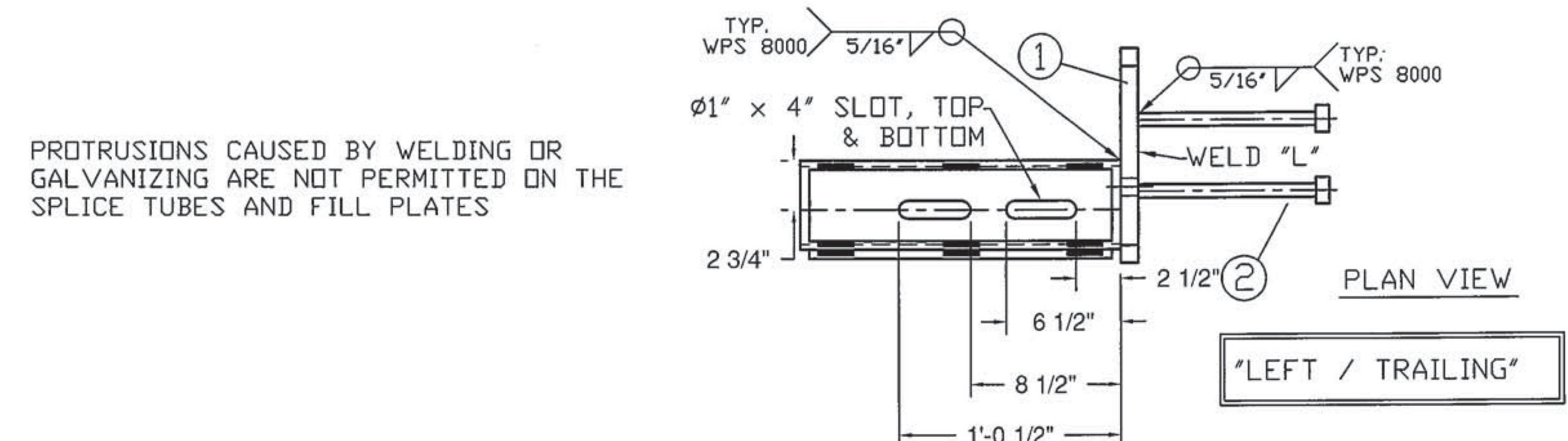
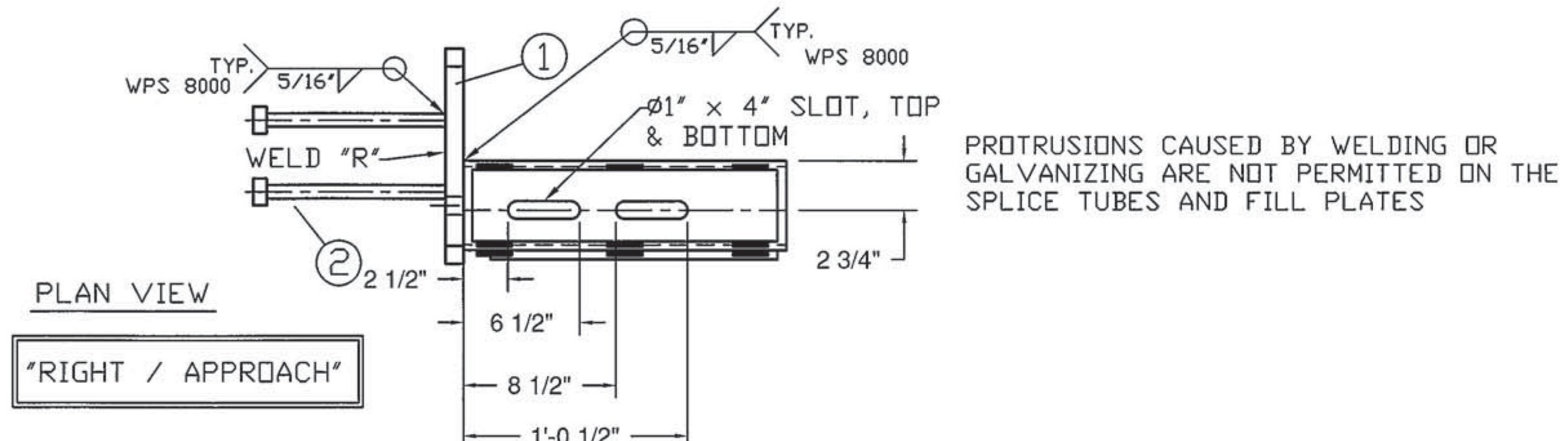


BILL OF MATERIALS- PER "RIGHT / APPROACH"			
ITEM #	QTY	DESCRIPTION	ASTM #
1	1	DBL TUBE WALL PLATE - 1' X 12' x 25'	ASTM A572 Gr. 50
2	10	Ø3/4" X 10" STUD	TO BE PURCHASED
3	2	5' X 5' X 5/16" TUBE W/ SLOTS @ 18"	ASTM A500 Gr. B
4	2	SHIM PL 1/2" X 4' X 17" W/ SLOTS	ASTM A709 Gr. 36 CVN
5	2	SHIM PL 1/2" X 4' X 17" (W/O SLOTS)	ASTM A709 Gr. 36 CVN

BILL OF MATERIALS - PER "LEFT / TRAILING"			
ITEM #	QTY	DESCRIPTION	ASTM #
1	1	DBL TUBE WALL PLATE - 1' X 12' x 25'	ASTM A572 Gr. 50
2	10	Ø3/4" X 10" STUD	TO BE PURCHASED
3	2	5' X 5' X 5/16" TUBE W/ SLOTS @ 18"	ASTM A500 Gr. B
4	2	SHIM PL 1/2" X 4' X 17" W/ SLOTS	ASTM A709 Gr. 36 CVN
5	2	SHIM PL 1/2" X 4' X 17" (W/O SLOTS)	ASTM A709 Gr. 36 CVN



* CONTRACTOR TO VERIFY THAT THESE ANGLES WORK WITH THE SITE GRADING AND APPROACH RAIL

Vermont Agency of Transportation
RECEIVED
 CK'D BY VHB OK'D BY TAS
 March 14, 2017
 RESUBMIT APPROVED YES
 BY T Sumner DATE 3/14/17

SHOP DRAWING REVIEW

REVIEWED AS REQUIRED BY THE CONSTRUCTION CONTRACT DOCUMENTS AND APPROVED, BUT ONLY FOR CONFORMANCE TO THE DESIGN CONCEPT OF THE WORK, AND SUBJECT TO FURTHER LIMITATIONS AND REQUIREMENTS CONTAINED IN THE CONSTRUCTION CONTRACT DOCUMENTS.

REJECTED REVISE AND RESUBMIT FURNISH AS CORRECTED

CORRECTIONS OR COMMENTS MADE ON THE SHOP DRAWINGS DURING THIS REVIEW DO NOT RELIEVE CONTRACTOR FROM COMPLIANCE WITH REQUIREMENTS OF THE DRAWINGS AND SPECIFICATIONS. THIS CHECK IS ONLY FOR REVIEW OF GENERAL CONFORMANCE WITH THE DESIGN CONCEPT OF THE PROJECT AND GENERAL COMPLIANCE WITH THE INFORMATION GIVEN IN THE CONTRACT DOCUMENTS. THE CONTRACTOR IS RESPONSIBLE FOR: CONFIRMING AND CORRELATING ALL QUANTITIES AND DIMENSIONS; SELECTING FABRICATION PROCESSES AND TECHNIQUES OF CONSTRUCTION; COORDINATING HIS WORK WITH THAT OF ALL OTHER TRADES; AND PERFORMING HIS WORK IN A SAFE AND SATISFACTORY MANNER.

vhb
 40 IDX Drive
 Building 100, Suite 200
 South Burlington, VT 05403
 802.497.6100

Job Number: BRF.025-1(42)
 Reviewed By: E.F. LAWES
 Date: MARCH 14, 2017

ITEM #: 900.640 SHEET 3 OF 5

STRUCTURAL STEEL TO COMPLY W/ ASTM A6

BRIDGE RAIL DETAILS SHEET
 T.H. 1 (V.T. 103) CLASS I (PRINCIPAL ARTERIAL) F.A.S. 025-1, BRIDGE # 25
 TOWN OF LUDLOW, WINDSOR COUNTY

R NO.	DATE	DESCRIPTION	BY	R NO.	DATE	DESCRIPTION	BY
E 1	1/9/17	REVISED PER 1/4/17 MARK-UP	D.K.	E 1			

ELDERLEE, INC.
 OAKS CORNERS, NEW YORK 14518
 email: dlong@elderlee.com / epes@elderlee.com
 Tel: 315-789-6670 Fax: 315-789-6615

DRAWN D.K. 12/12/16
 CHECKED E.P. 12/12/16
 APPROVED D.L. 12/12/16
 SCALE SCHEMATIC
 DRAWING NO. FR LAFAYETTE - LUJLOW