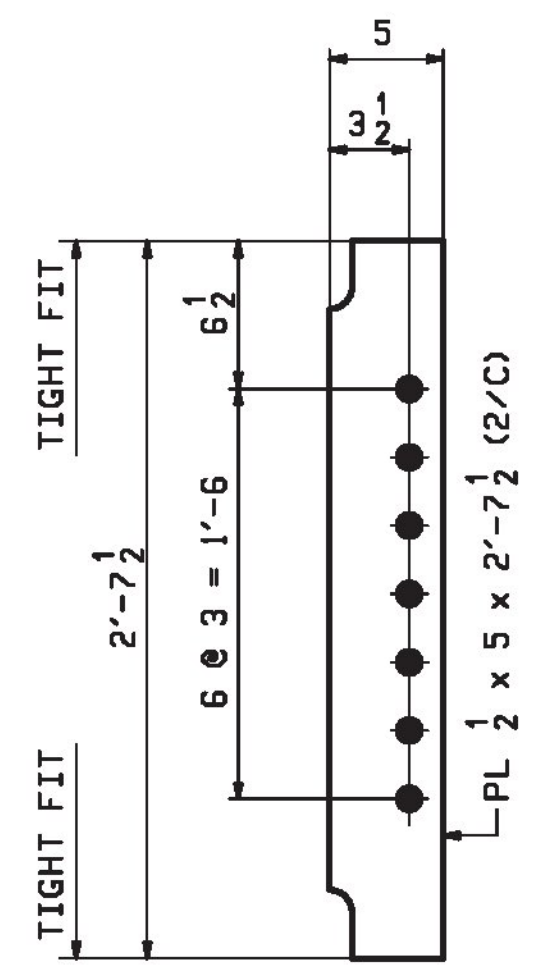
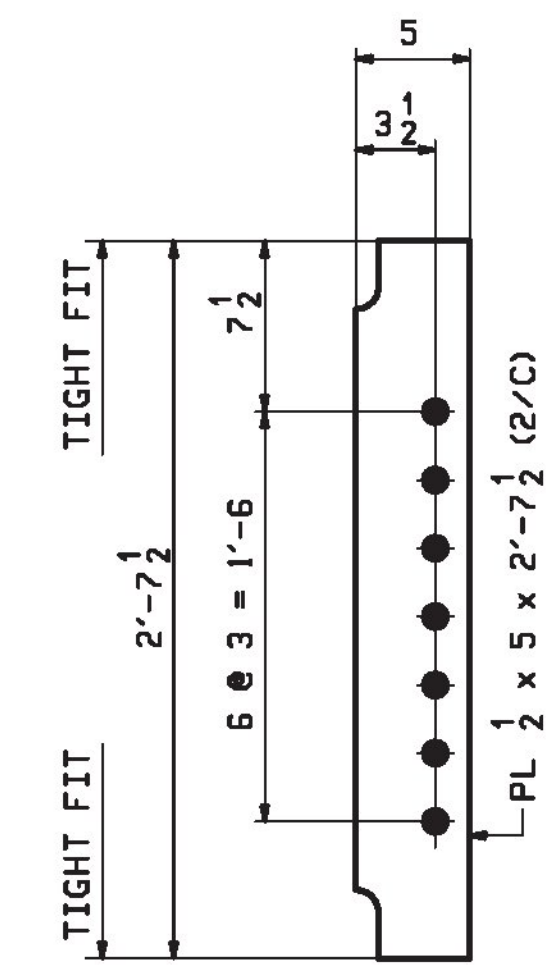


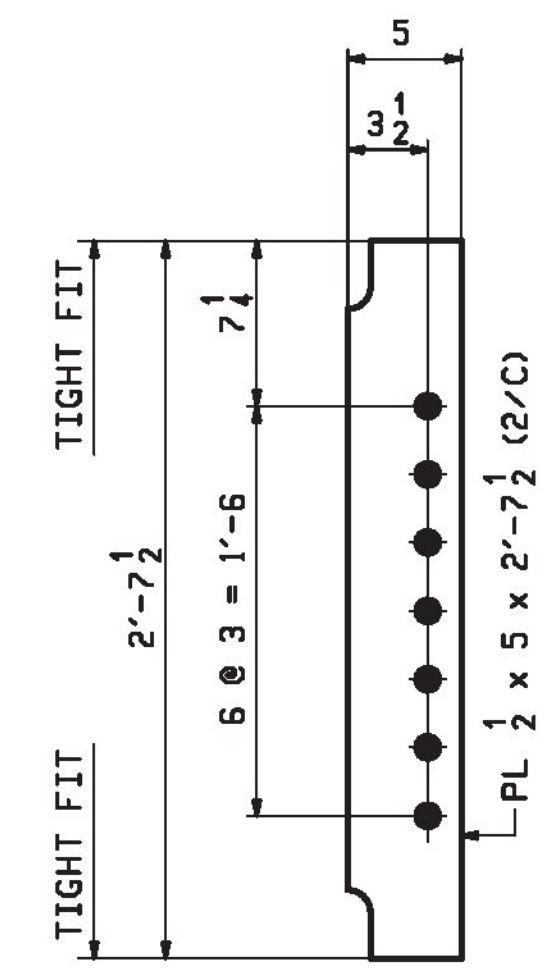
48 ~ BRG STIFFENER ~ x1a
ABUT. 1 & 2



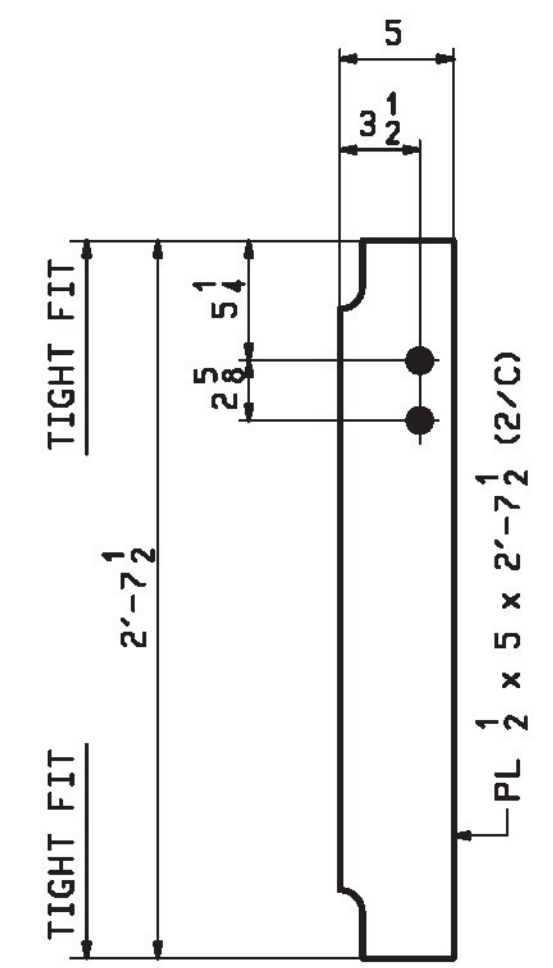
55 ~ CONN STIFFENER ~ x1b
TYPE ID & ED LOW GIRL



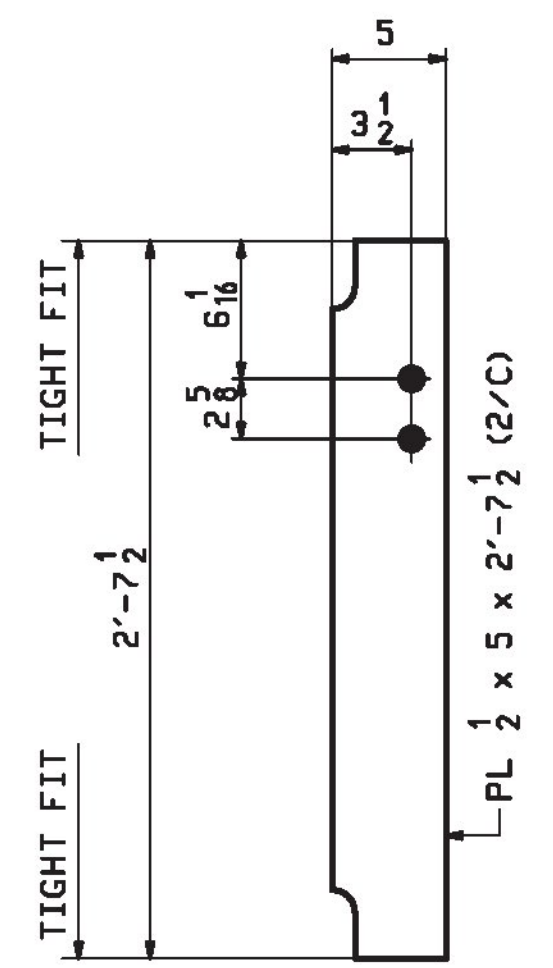
30 ~ CONN STIFFENER ~ x1c
TYPE ID HIGH GIRL
(DROP 7/8 - 1 1/8)



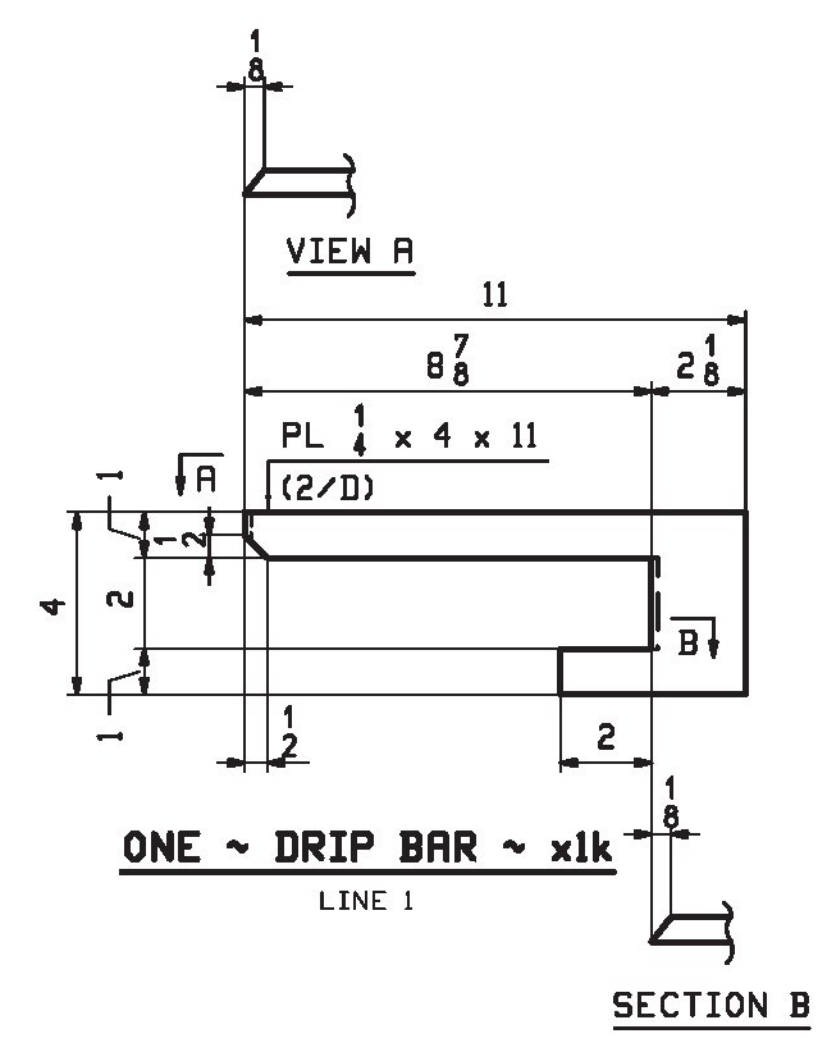
15 ~ CONN STIFFENER ~ x1d
TYPE ED HIGH GIRL



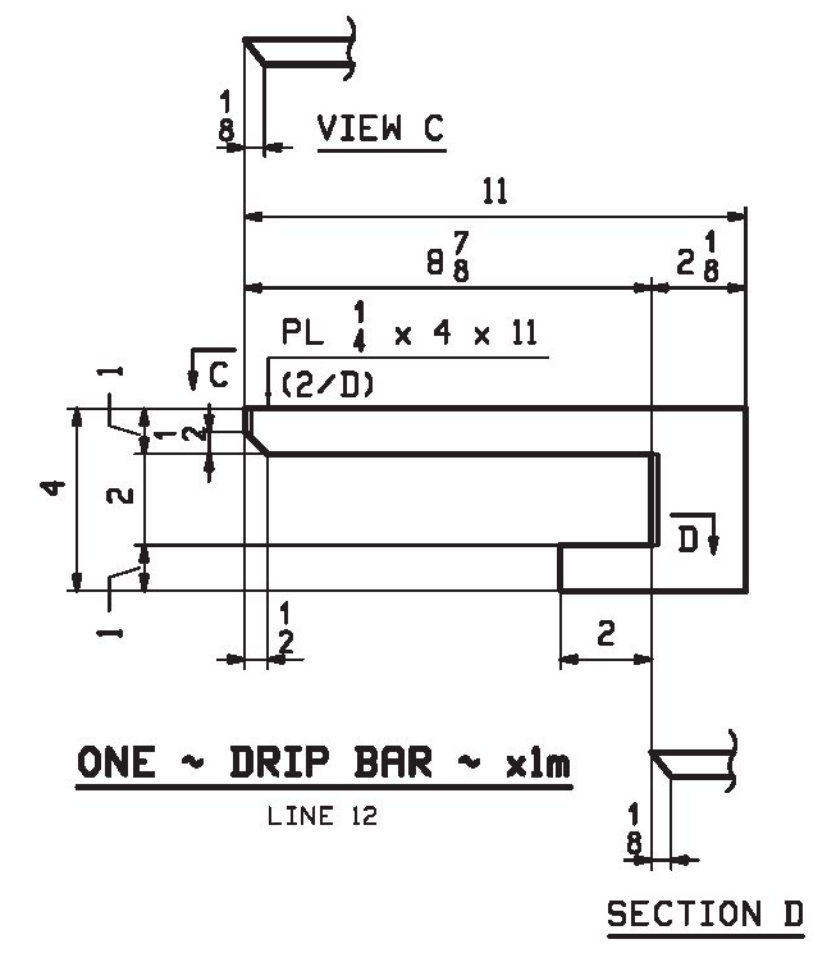
11 ~ CONN STIFFENER ~ x1f
TYPE U1 LOW GIRL



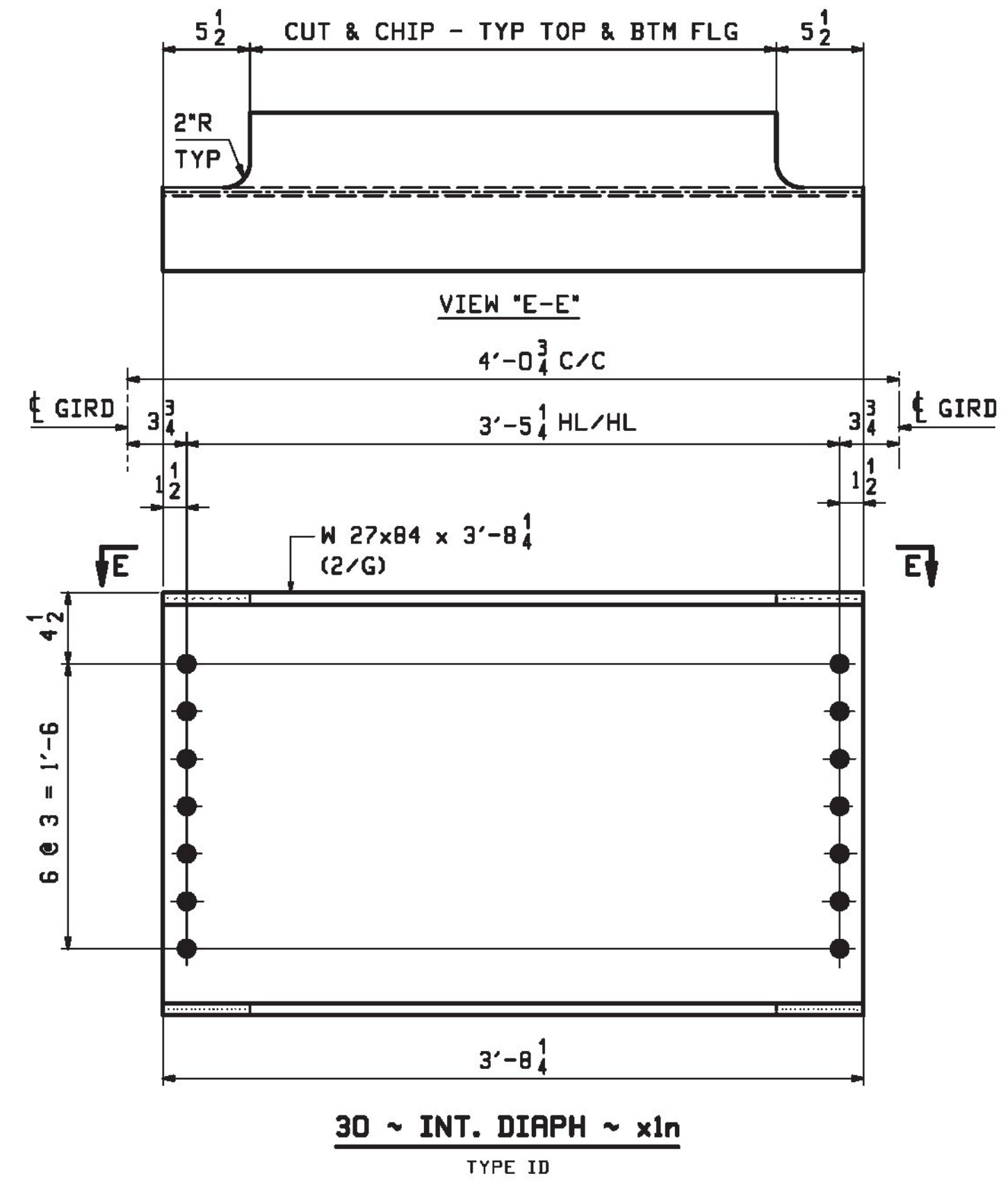
11 ~ CONN STIFFENER ~ x1g
TYPE U1 HIGH GIRL



ONE ~ DRIP BAR ~ x1k
LINE 1



ONE ~ DRIP BAR ~ x1m
LINE 12



30 ~ INT. DIAPH ~ x1n
TYPE ID

Vermont Agency of Transportation
RECEIVED
 CK'D BY VHB OK'D BY TAS
 March 31, 2017
 RESUBMIT _____ APPROVED YES
 BY T Sumner DATE 4/11/17

SHOP DRAWING REVIEW

REVIEWED AS REQUIRED BY THE CONSTRUCTION CONTRACT DOCUMENTS AND APPROVED, BUT ONLY FOR CONFORMANCE TO THE DESIGN CONCEPT OF THE WORK, AND SUBJECT TO FURTHER LIMITATIONS AND REQUIREMENTS CONTAINED IN THE CONSTRUCTION CONTRACT DOCUMENTS.

REJECTED REVISE AND RESUBMIT FURNISH AS CORRECTED

CORRECTIONS OR COMMENTS MADE ON THE SHOP DRAWINGS DURING THIS REVIEW DO NOT RELIEVE CONTRACTOR FROM COMPLIANCE WITH REQUIREMENTS OF THE DRAWINGS AND SPECIFICATIONS. THIS CHECK IS ONLY FOR REVIEW OF GENERAL CONFORMANCE WITH THE DESIGN CONCEPT OF THE PROJECT AND GENERAL COMPLIANCE WITH THE INFORMATION GIVEN IN THE CONTRACT DOCUMENTS. THE CONTRACTOR IS RESPONSIBLE FOR: CONFIRMING AND CORRELATING ALL QUANTITIES AND DIMENSIONS; SELECTING FABRICATION PROCESSES AND TECHNIQUES OF CONSTRUCTION; COORDINATING HIS WORK WITH THAT OF ALL OTHER TRADES; AND PERFORMING HIS WORK IN A SAFE AND SATISFACTORY MANNER.

vhb 40 IDX Drive
 Building 100, Suite 200
 South Burlington, VT 05403
 802.497.6100

Job Number: BRF 025-1(42)
 Reviewed By: E.F. LAWES
 Date: April 11, 2017

NOTE:
 FOR GENERAL NOTES SEE DRAWING GNI.

REV.	DATE	REMARKS	DWN	CHK	APVL	SHOP
03/08	2017	APPROVAL COMMENTS	ATD	PCP		
01/09	2017	ADD HOLES TO STIFFS & REV QTY (EXTRA-TEC-3429-DDI)	ATD	PCP		
0						

MATERIAL: M270-50 SURFACE PREP. & PRINT: SEE DWG GNI HOLES: 15/16" Ø SHOP BOLTS: NONE

DESCRIPTION: STANDARD DETAILS

Casco Bay Steel Structures, Inc.
 1 WALLACE AVE. PHONE (207) 780-6722
 SOUTH PORTLAND, ME 04106 FAX. (207) 780-6726

STRUCTURE: VT RTE 103 (MAIN STREET) OVER BLACK RIVER BRIDGE NO. 25 DRAWN: ATD DATE: 12/06
 ROUTE T.H.I (VT 103) CLASS I F.R.S. 025-1 CHKD: PCP DATE: 12/13

LOCATION: TOWN OF LUDLOW, WINDSOR COUNTY, VT JOB NO. DWG NO. X1
 PROJ NO. BRF 025-1(42) CUSTOMER: COLD RIVER BRIDGES, L.L.C. 684 REV.

PC: Rev. No. 13, 03/08 2:54:53 PM /s:\proj\103\2017\01_1_Rev1