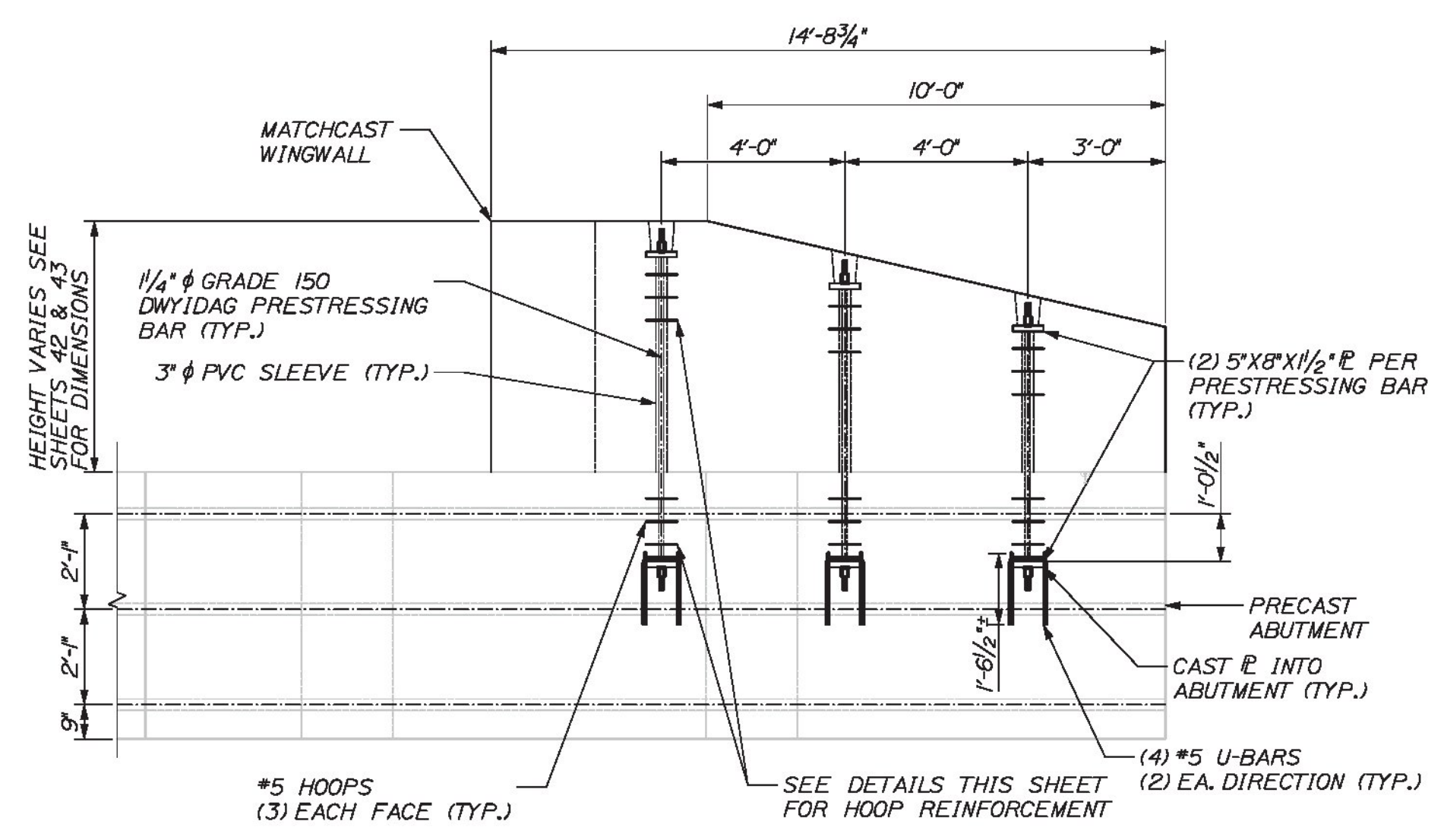
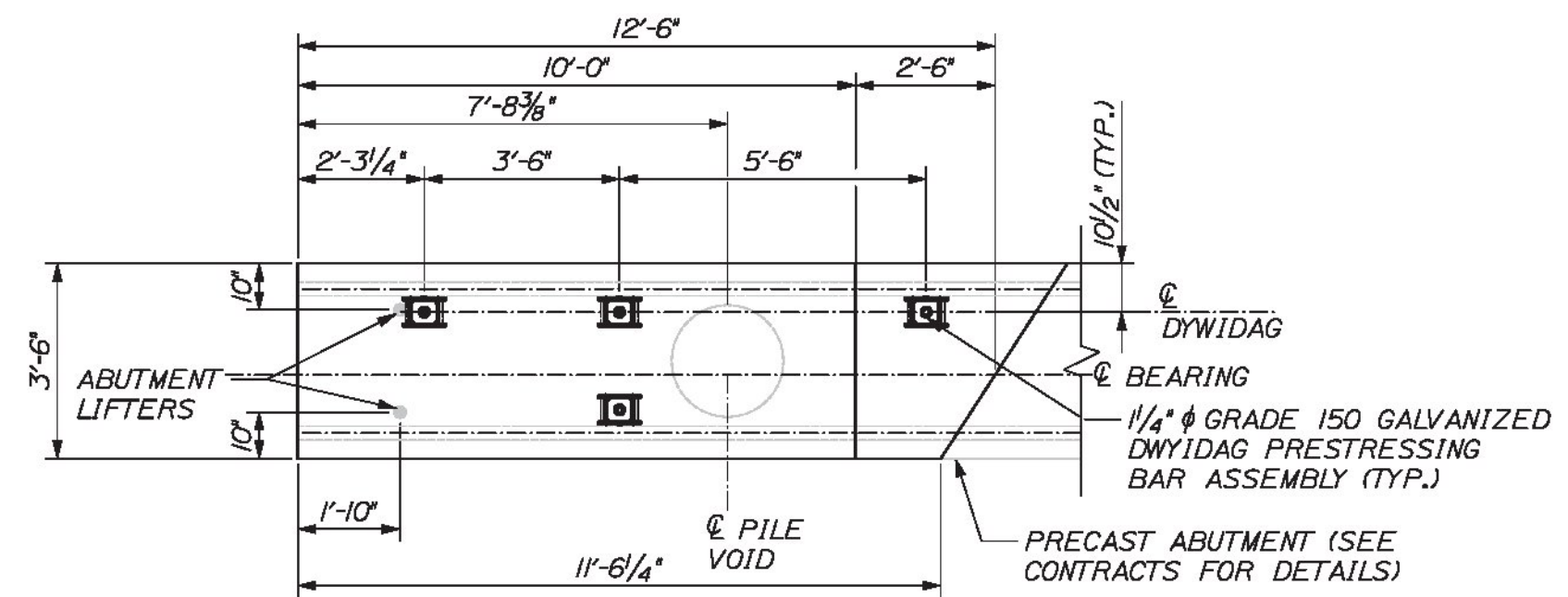


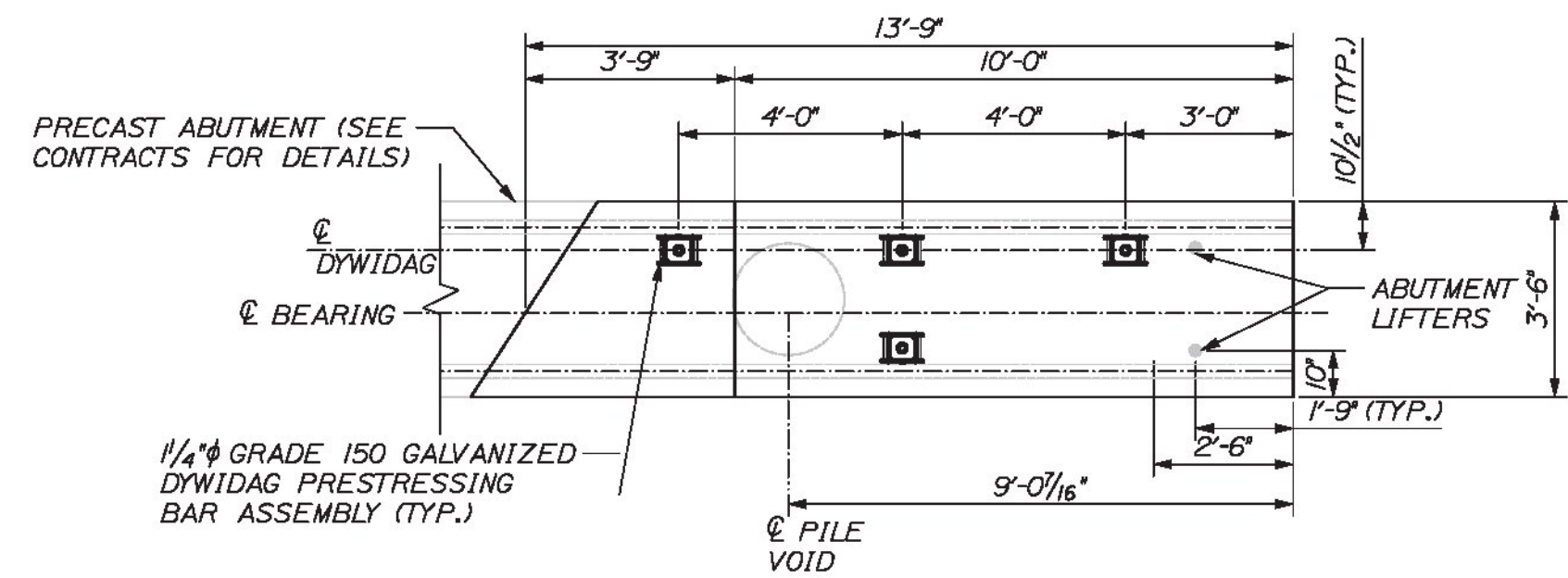
WINGWALL 2 POST-TENSIONING ELEVATION
NOTE: WINGWALL 3 SIMILAR
SCALE: 3/8" = 1'-0"



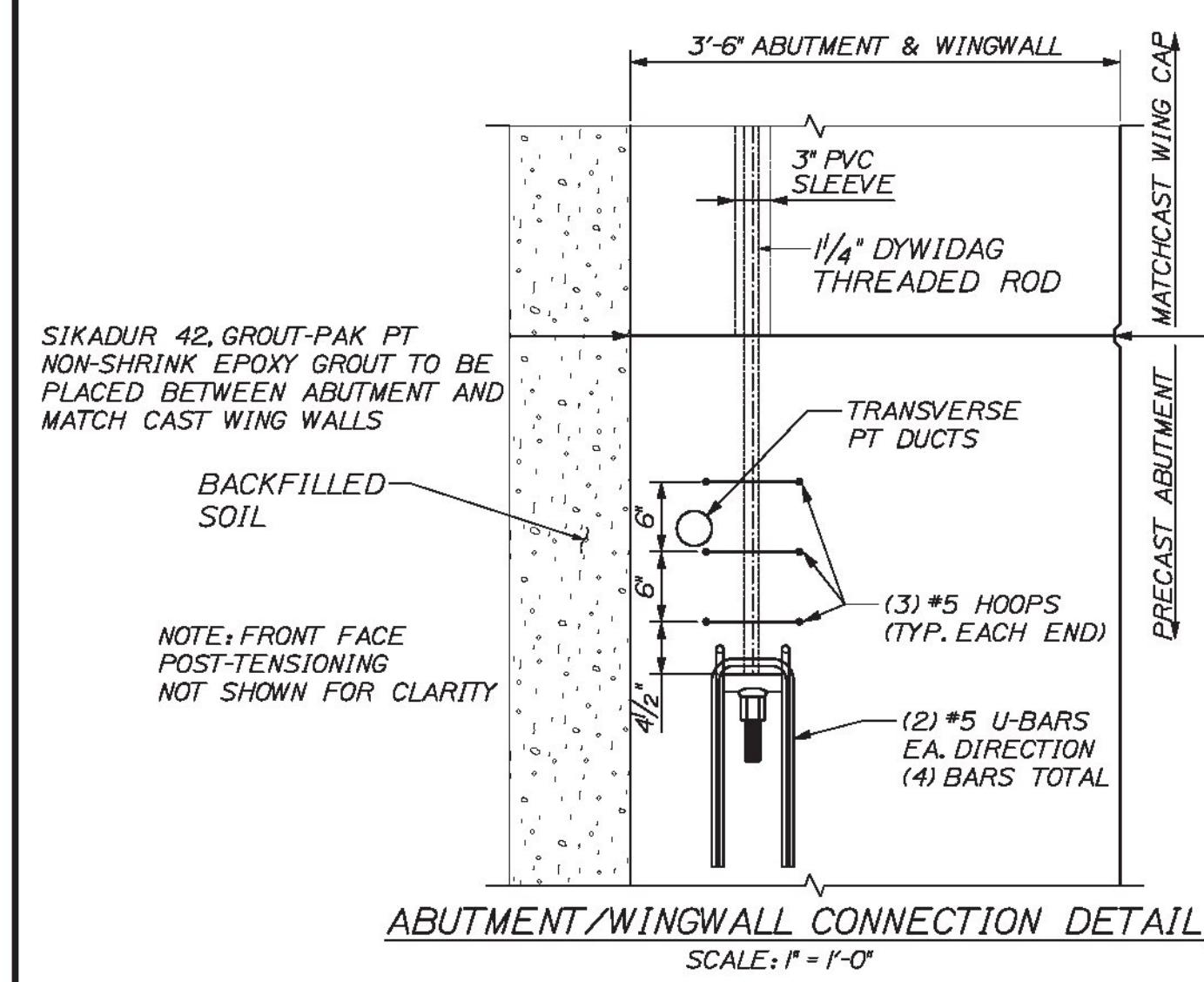
WINGWALL 1 POST-TENSIONING ELEVATION
NOTE: WINGWALL 4 SIMILAR
SCALE: 3/8" = 1'-0"



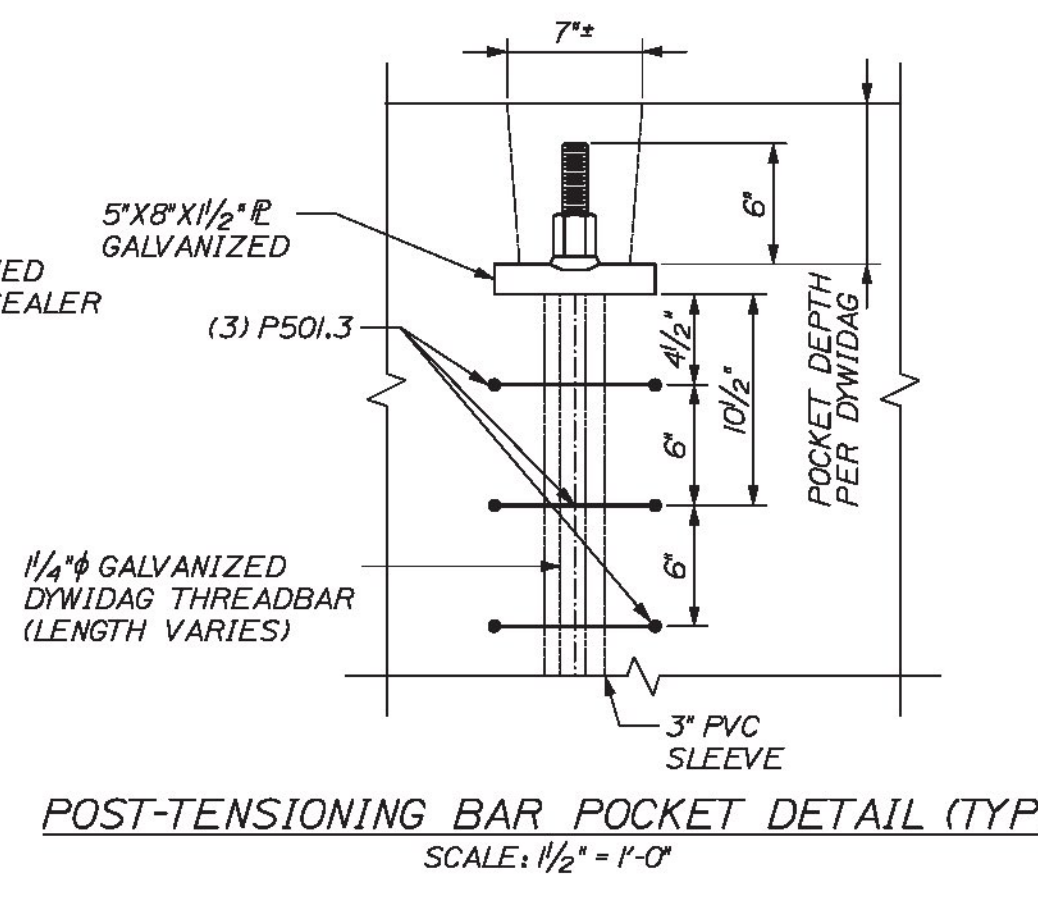
WINGWALL 2 POST-TENSIONING PLAN
NOTE: WINGWALL 3 SIMILAR
SCALE: 3/8" = 1'-0"



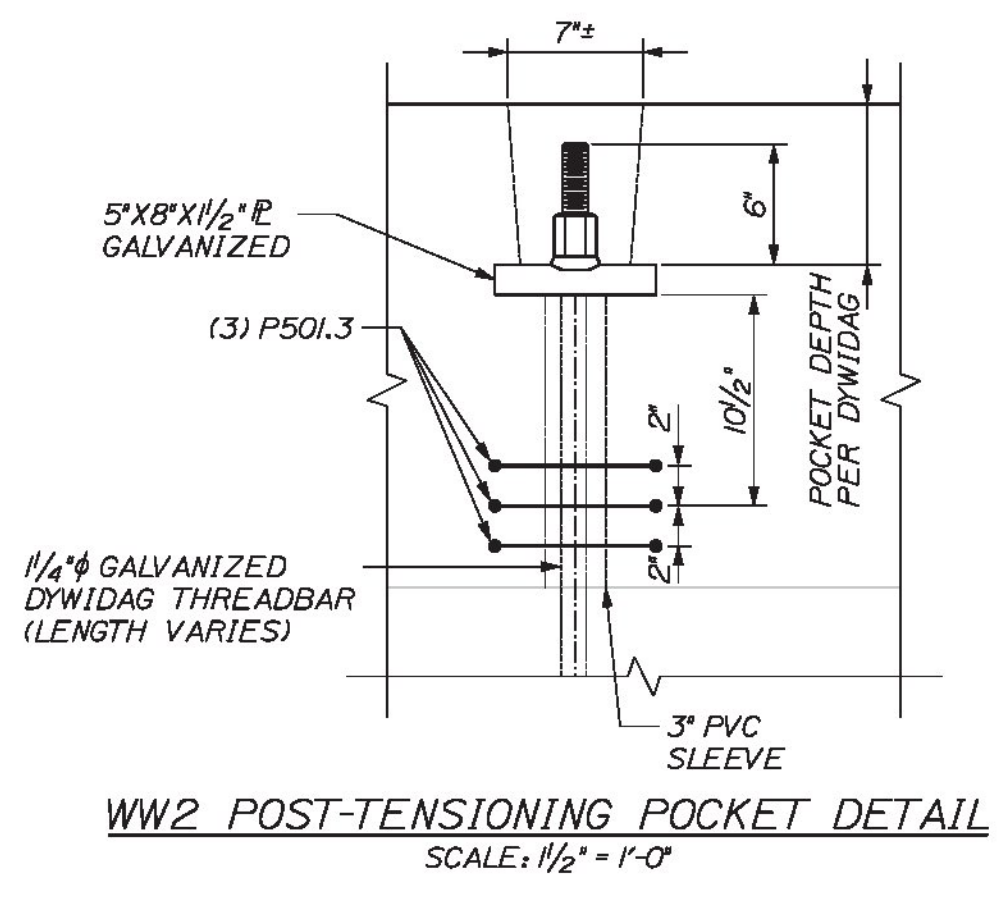
WINGWALL 1 POST-TENSIONING PLAN
NOTE: WINGWALL 4 SIMILAR
SCALE: 3/8" = 1'-0"



ABUTMENT/WINGWALL CONNECTION DETAIL
SCALE: 1" = 1'-0"



POST-TENSIONING BAR POCKET DETAIL (TYP)
SCALE: 1/2" = 1'-0"



WW2 POST-TENSIONING POCKET DETAIL
SCALE: 1/2" = 1'-0"

- POST-TENSIONING NOTES**
- #5 HOOPS BY PRECASTER
 - REINFORCEMENT FOR ABUTMENT AND MATCH CAST WINGS NOT SHOWN, SEE SHEETS 44 AND 45
 - PLATE TO BE A36 GALVANIZED PER ASTM A 123
 - THREADBAR AND HARDWARE TO BE GALVANIZED PER ASTM A 153
 - FPU = 150KSI FOR THREADBAR PER DWYIDAG
 - THREADBARS SHALL BE PULLED TO A MAXIMUM OF 120 KSI AND LOCKED OFF AT A MINIMUM OF 105 KSI
 - INSTALL APPROVED NON-SHRINK GROUT TO FILL PT BAR POCKET
 - REQUIRED COMPRESSIVE STRENGTH OF CONCRETE TO BE 4 KSI
 - CONTRACTOR WILL USE SIKADUR 42 GROUT-PAK PT BETWEEN PRECAST ABUTMENT AND MATCHCAST WINGWALL
 - CONTRACTOR SHALL USE A CALIBRATED JACK TO POST-TENSION THREADBARS TO ENSURE THAT TENSION LIMITS ARE NOT EXCEEDED

Vermont Agency of Transportation
RECEIVED
CK'D BY VHB OK'D BY TAS
March 7, 2017
RESUBMIT NO APPROVED AS NOTED
BY T Sumner DATE 3/9/17

CALDERWOOD ENGINEERING, ETC.
STRUCTURAL ENGINEERING • DETAILING SERVICES
222 RIVER RD, RICHMOND, ME 04877 PMP# 007157-2007/07/13/2008
PREPARED FOR
COLD RIVER BRIDGES, LLC
GEE 16-16-COLD RIVER BRIDGES
01-CS-LUDLOW

STATE OF VERMONT
REGISTERED PROFESSIONAL ENGINEER
CALDERWOOD
No. 9099
P.E. NUMBER
DATE

DESIGN/DETAIL	DATE
CHECKED/REVIEWED	FEB 2017
REVISIONS 1	
REVISIONS 2	
REVISIONS 3	
REVISIONS 4	
FIELD CHANGES	

VE SUPER DESIGN
LUDLOW VT. BR# 025-1(42)
WINGWALL POST-TENSIONING DIMENSIONS

SHEET NUMBER
43a
of 73