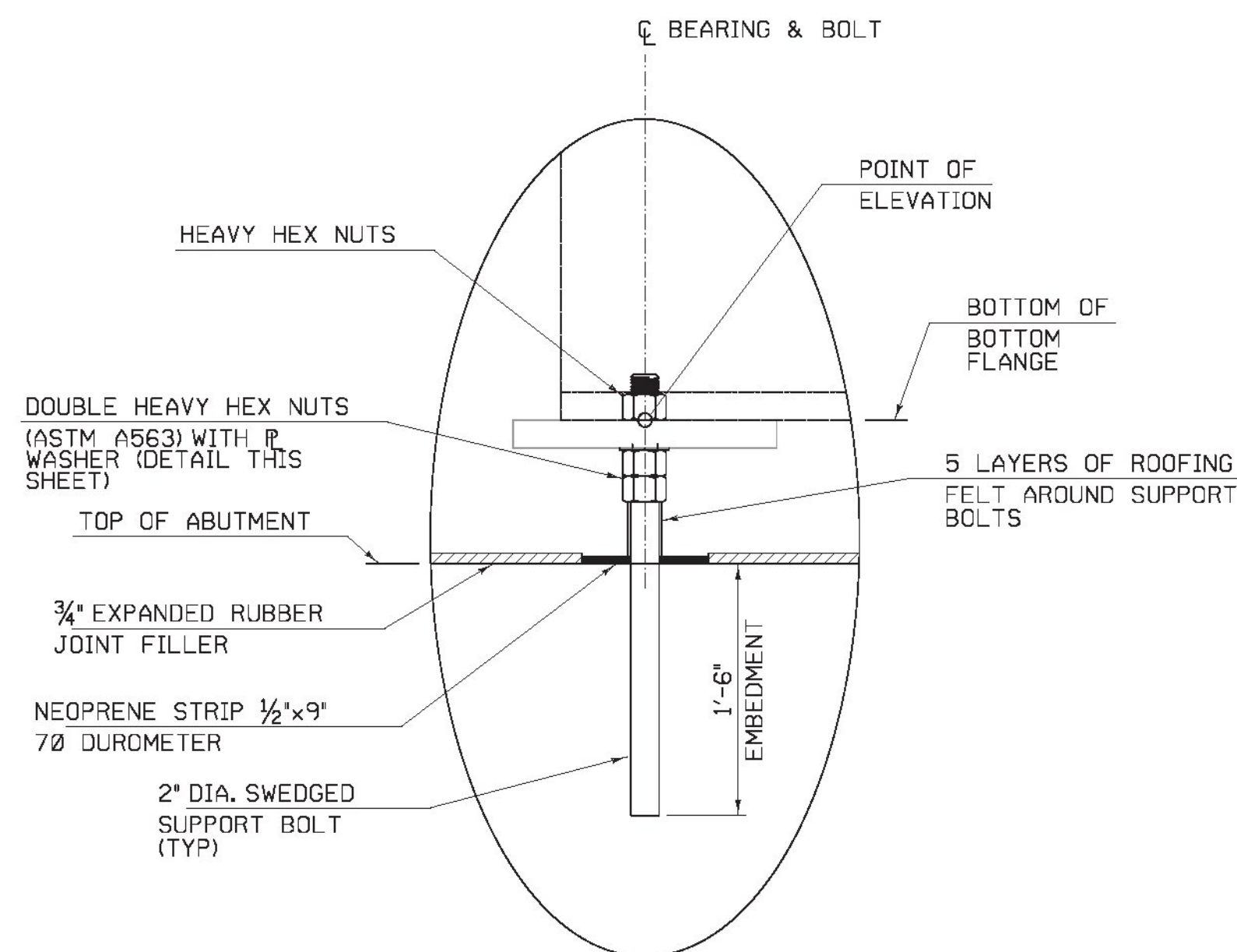
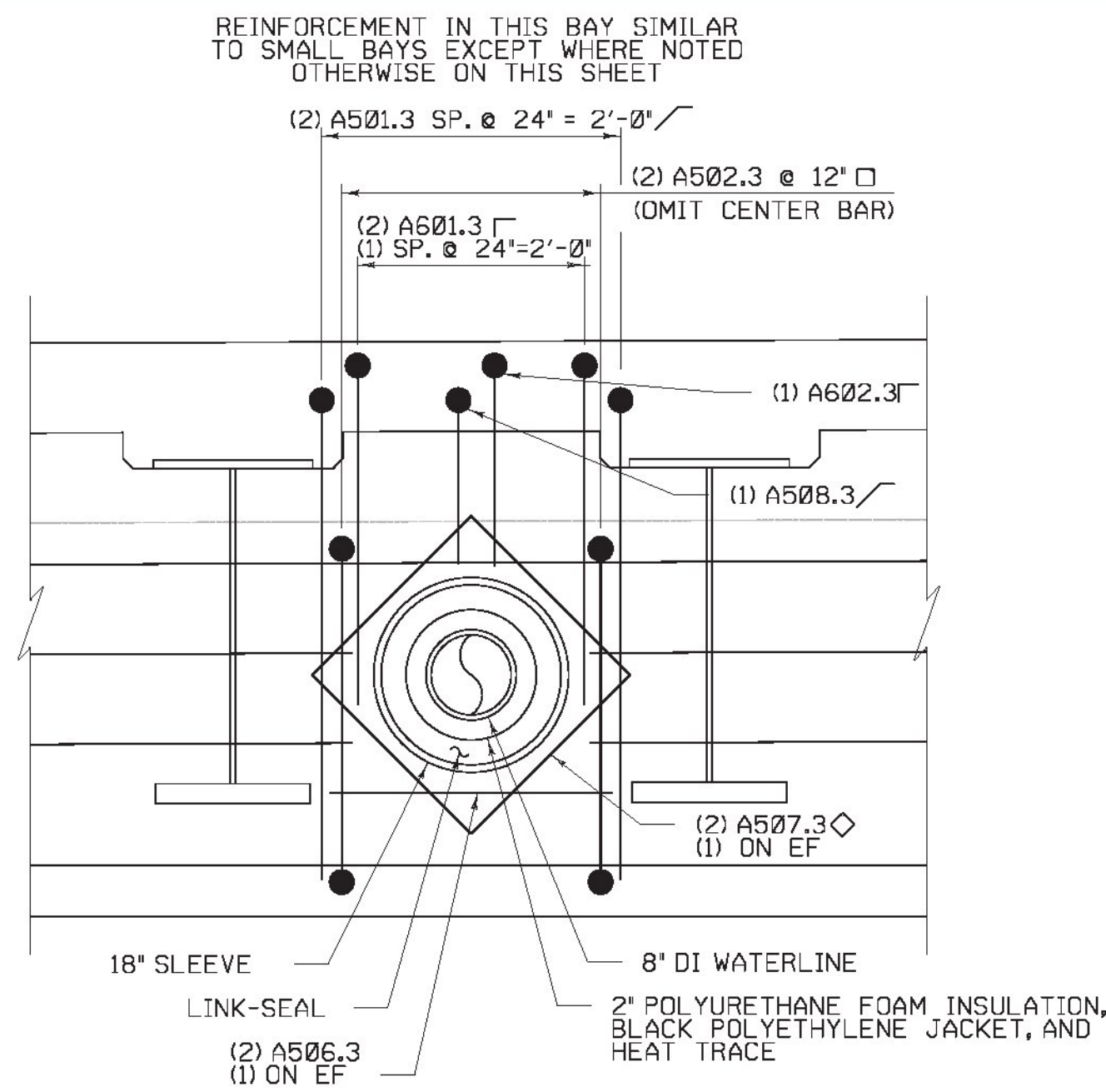


SUPPORT BOLT LAYOUT
SCALE 1 1/2" = 1'-0"

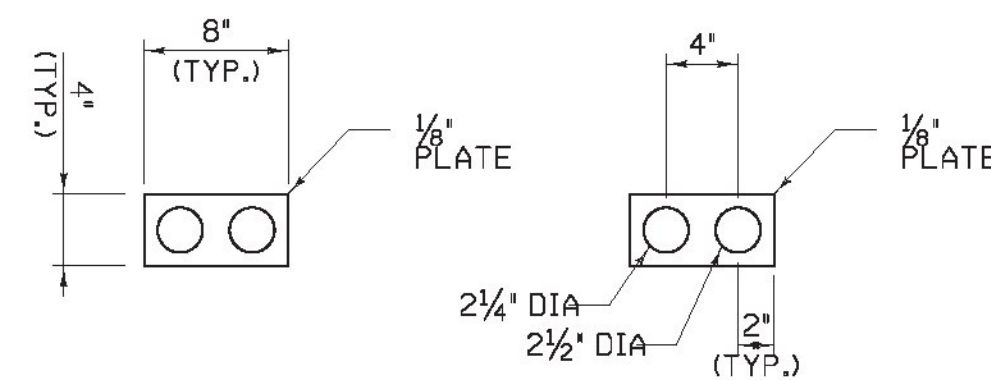


SECTION A-A
SUPPORT BOLT DETAIL (TYP)
SCALE 1 1/2" = 1'-0"



WATERLINE ABUTMENT PENETRATION DETAIL
NOT TO SCALE

- NOTES:
- SPACE BARS TO MAINTAIN 1/4" MIN CLR AROUND SLEEVE. FIELD CUT CENTER BARS TO MAINTAIN 1/2" MIN CLR AROUND SLEEVE.
 - SLEEVE SHALL BE STEEL WITH 18" INSIDE DIA, AND SHALL BE COMPATIBLE WITH LINK-SEAL AND REINFORCING LAYOUT.



DOUBLE ANCHOR BOLT ASSEMBLY PLATE WASHER
NOT TO SCALE

Vermont Agency of Transportation
RECEIVED

CK'D BY VHB OK'D BY TAS

March 7, 2017

RESUBMIT NO APPROVED AS NOTED
BY T Sumner DATE 3/9/17

SHOP DRAWING REVIEW	
<input type="checkbox"/> REVIEWED AS REQUIRED BY THE CONSTRUCTION CONTRACT DOCUMENTS AND APPROVED, BUT ONLY FOR CONFORMANCE TO THE DESIGN CONCEPT OF THE WORK, AND SUBJECT TO FURTHER LIMITATIONS AND REQUIREMENTS CONTAINED IN THE CONSTRUCTION CONTRACT DOCUMENTS.	<input checked="" type="checkbox"/> FURNISH AS CORRECTED
<input type="checkbox"/> REJECTED	<input type="checkbox"/> REVISE AND RESUBMIT
CORRECTIONS OR COMMENTS MADE ON THE SHOP DRAWINGS DURING THIS REVIEW DO NOT RELIEVE CONTRACTOR FROM COMPLIANCE WITH REQUIREMENTS OF THE DRAWINGS AND SPECIFICATIONS. THIS CHECK IS ONLY FOR REVIEW OF GENERAL CONFORMANCE WITH THE DESIGN CONCEPT OF THE PROJECT AND GENERAL COMPLIANCE WITH THE INFORMATION GIVEN IN THE CONTRACT DOCUMENTS. THE CONTRACTOR IS RESPONSIBLE FOR CONFIRMING AND CORRELATING ALL QUANTITIES AND DIMENSIONS, SELECTING FABRICATION PROCESSES AND TECHNIQUES OF CONSTRUCTION, COORDINATING HIS WORK WITH THAT OF ALL OTHER TRADES, AND PERFORMING HIS WORK IN A SAFE AND SATISFACTORY MANNER.	
40 IDX Drive Building 100, Suite 200 South Burlington, VT 05403 802-497-6100	Job Number: <u>BRF 025-1(42)</u> Reviewed By: <u>E.F. LAWES</u> Date: <u>MARCH 9, 2017</u>

NOTE:

- NF = NEAR FACE
- FF = FAR FACE
- EF = EACH FACE
- ▲ = CUT TO FIT IN FIELD
- 3' CLEAR, UNLESS OTHERWISE SPECIFIED ON THE PLANS.
- 2'-2" BAR LAP UNLESS OTHERWISE SPECIFIED ON THE PLANS.

NOTES:

- SEE ABUTMENT DETAILS (1 OF 3) AND PROJECT NOTES FOR ADDITIONAL FABRICATION, CONSTRUCTION, AND SEQUENCE NOTES.

CALDERWOOD ENGINEERING, ETC.
STRUCTURAL ENGINEERING • DESIGNATING SERVICES
222 RIVER RD., RICHMOND, ME 04857 PH: (207) 527-2807 FAX: (207) 527-2808
PREPARED FOR:
COLD RIVER BRIDGES, LLC
CEE 16-16-COLD RIVER BRIDGES
01-CS-LUDLOW

DATE	BY	REVISIONS	P.E. NUMBER	DATE
MAY 2017	TDC			
	TDC			
		REVISIONS 1		
		REVISIONS 2		
		REVISIONS 3		
		REVISIONS 4		
		FIELD CHANGES		

VE SUPER DESIGN
LUDLOW VT. BRF 025-1(42)
ABUTMENT DETAILS (2 OF 3)

SHEET NUMBER
crb page 28
46
of 73

