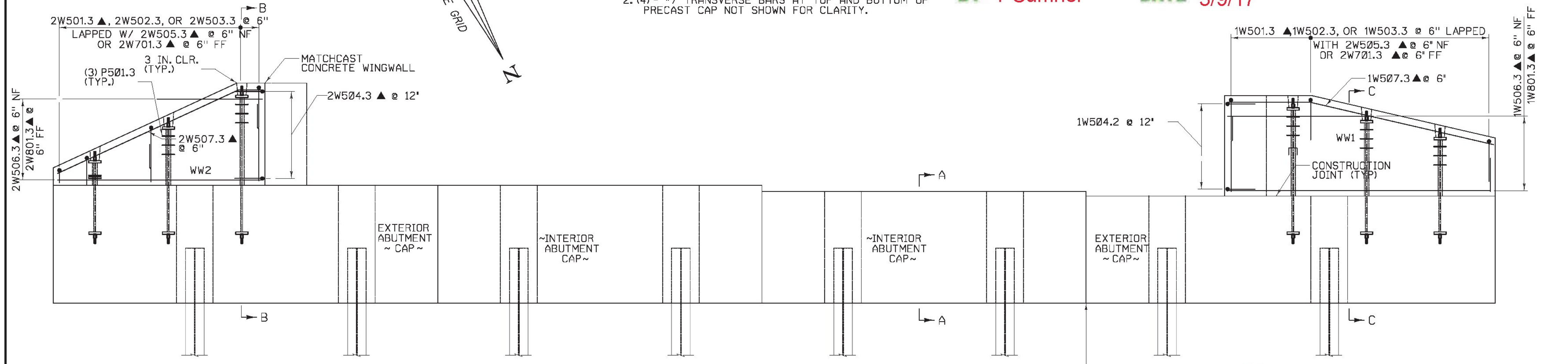


ABUTMENT NO. 1 REINFORCING PLAN
SCALE 3/8" = 1'-0"
(ABUTMENT NO. 2 SIMILAR)

- NOTES:
1. TRANSVERSE POST-TENSIONING DUCTS & GROUT DUCTS NOT SHOWN FOR CLARITY.
 2. (4) - #7 TRANSVERSE BARS AT TOP AND BOTTOM OF PRECAST CAP NOT SHOWN FOR CLARITY.

Vermont Agency of Transportation
RECEIVED
CK'D BY VHB OK'D BY TAS
March 7, 2017
RESUBMIT NO APPROVED AS NOTED
BY T Sumner DATE 3/9/17

NOTE:
NF = NEAR FACE
FF = FAR FACE
EF = EACH FACE
▲ = CUT TO FIT IN FIELD
3' CLEAR, UNLESS OTHERWISE SPECIFIED ON THE PLANS.
2'-2" BAR LAP UNLESS OTHERWISE SPECIFIED ON THE PLANS.



ABUTMENT NO. 1 REINFORCING ELEVATION
SCALE 3/8" = 1'-0"
(ABUTMENT NO. 2 SIMILAR, 4W SIMILAR TO 1W, 3W SIMILAR TO 2W)

- NOTES:
1. SEE ABUTMENT SECTIONS SHEET FOR SECTIONS A-A, B-B, AND C-C.
 2. TOP PORTION OF WINGWALLS TO BE MATCH CAST.
 3. THE BRIDGE PLAQUE FURNISHED BY THE AGENCY SHALL BE CAST INTO WINGWALL. 2. ALL WORK TO INSTALL THE PLAQUE SHALL BE INCIDENTAL TO THE APPROPRIATE CONCRETE CONTRACT ITEM. SEE SD-502.00 FOR FURTHER DETAILS.

SHOP DRAWING REVIEW

REVIEWED AS REQUIRED BY THE CONSTRUCTION CONTRACT DOCUMENTS AND APPROVED, BUT ONLY FOR CONFORMANCE TO THE DESIGN CONCEPT OF THE WORK, AND SUBJECT TO FURTHER LIMITATIONS AND REQUIREMENTS CONTAINED IN THE CONSTRUCTION CONTRACT DOCUMENTS.

REJECTED REVISE AND RESUBMIT FURNISH AS CORRECTED

CORRECTIONS OR COMMENTS MADE ON THE SHOP DRAWINGS DURING THIS REVIEW DO NOT RELIEVE CONTRACTOR FROM COMPLIANCE WITH REQUIREMENTS OF THE DRAWINGS AND SPECIFICATIONS. THIS CHECK IS ONLY FOR REVIEW OF GENERAL CONFORMANCE WITH THE DESIGN CONCEPT OF THE PROJECT AND GENERAL COMPLIANCE WITH THE INFORMATION GIVEN IN THE CONTRACT DOCUMENTS. THE CONTRACTOR IS RESPONSIBLE FOR CONFIRMING AND CORRELATING ALL QUANTITIES AND DIMENSIONS, SELECTING FABRICATION PROCESSES AND TECHNIQUES OF CONSTRUCTION, COORDINATING HIS WORK WITH THAT OF ALL OTHER TRADES, AND PERFORMING HIS WORK IN A SAFE AND SATISFACTORY MANNER.

vhb 40 IXD Drive
Building 100, Suite 200
South Burlington, VT 05403
802.497.6100

Job Number: BRF 025-1(42)
Reviewed By: E.F. LAWES
Date: MARCH 9, 2017

CALDERWOOD ENGINEERING, ETC.
STRUCTURAL ENGINEERING • DETAILING SERVICES
222 RIVER RD., RICHMOND, ME 04857 PH: (207) 337-2001 FAX: (207) 337-2008
PREPARED FOR: **COLD RIVER BRIDGES, LLC**
CEE-16-14-COLD RIVER BRIDGES
01-05-LUDLOW

DESIGN/DETAIL	DATE	BY	DATE	REVISIONS	P.L.E. NUMBER	DATE
DESIGN	02/20/17	TIC	02/20/17	1		
REVISIONS				2		
REVISIONS				3		
REVISIONS				4		
FIELD CHANGES						

VE SUPER DESIGN
LUDLOW VT. BR. 025-1(42)
ABUTMENT REINFORCING

SHEET NUMBER
crb page 26
44
of 73