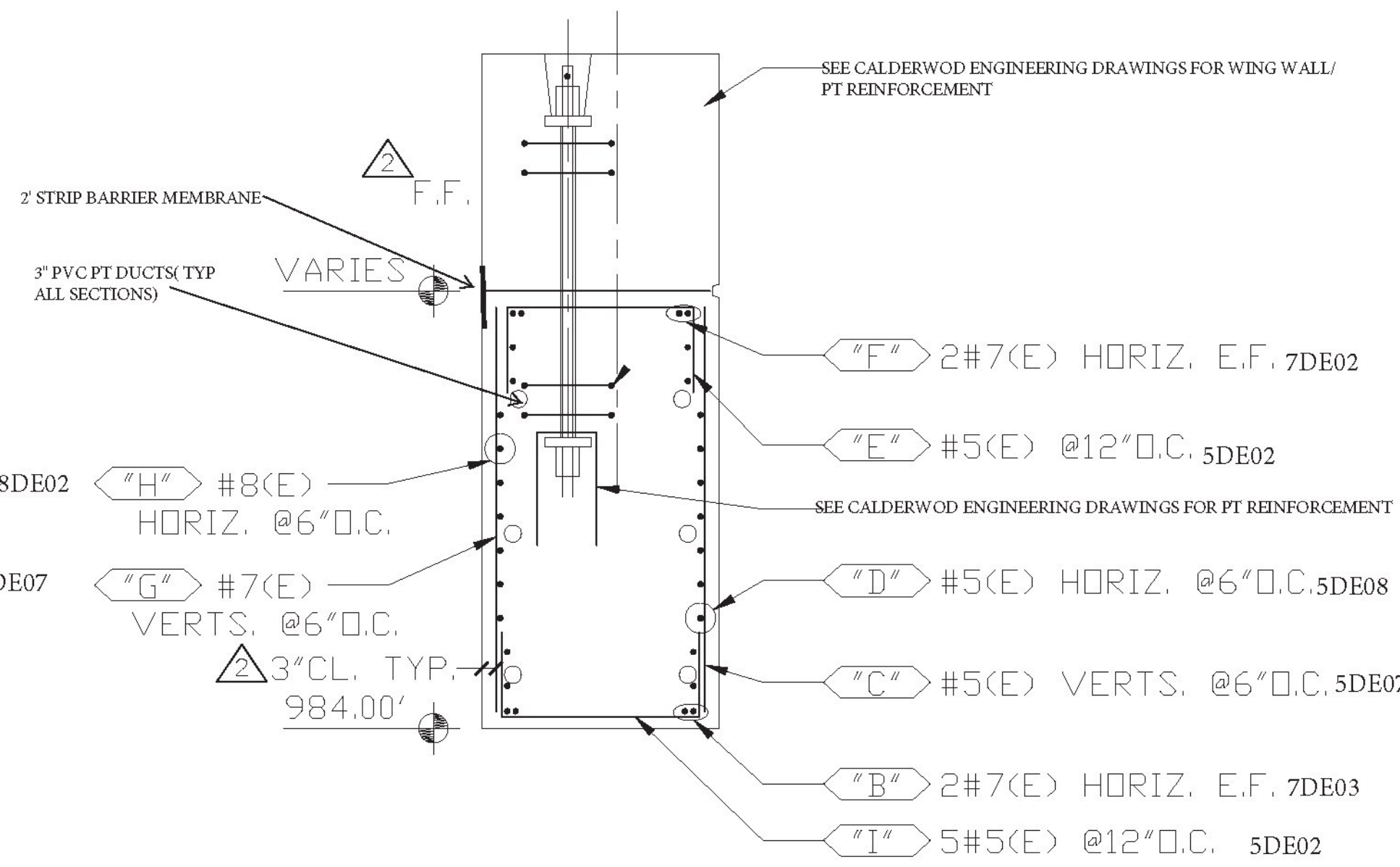


BAR MARKS MAY CHANGE, DUE TO REVISIONS

WORK THIS DRAWING WITH DRAWINGS D, D1, & D3

MATCH CAST DETAILS AND KEYWAY NOT SHOWN FOR CLARITY.

DECK, & BACKWALL ARE NOT PART OF THIS SUBMISSION



**SECTION C**

CONTRACT DWG. REF. 45 OF 73

**LEGEND:**

CONT.-CONTINUOUS	E.E.-EACH END
TRANS.-TRANSVERSE	E.F.-EACH FACE
DWLS.-DOWELS	N.F.-NEAR FACE
VERTS.-VERTICAL	F.F.-FAR FACE
HORIZ.-HORIZONTAL	E.W.-EACH WAY
T&B -TOP & BOTTOM	O.C.-ON CENTER
I.F.-INNER FACE	L.W.-LONG WAY
O.F.-OUTER FACE	S.W.-SHORT WAY

ELEVATIONS & DIMENSIONS SHOWN ON THIS DWG. ARE FOR REIN. DETAILING PURPOSES ONLY AND ARE NOT INTENDED FOR DIMENSIONAL CONSTRUCTION.

EPOXY REIN. BARS ASTM A615 GRADE 60, MARKED (E)

Vermont Agency of Transportation  
**RECEIVED**  
 CK'D BY VHB OK'D BY TAS  
 March 7, 2017  
 RESUBMIT NO APPROVED AS NOTED  
 BY T Sumner DATE 3/9/17

**SHOP DRAWING REVIEW**

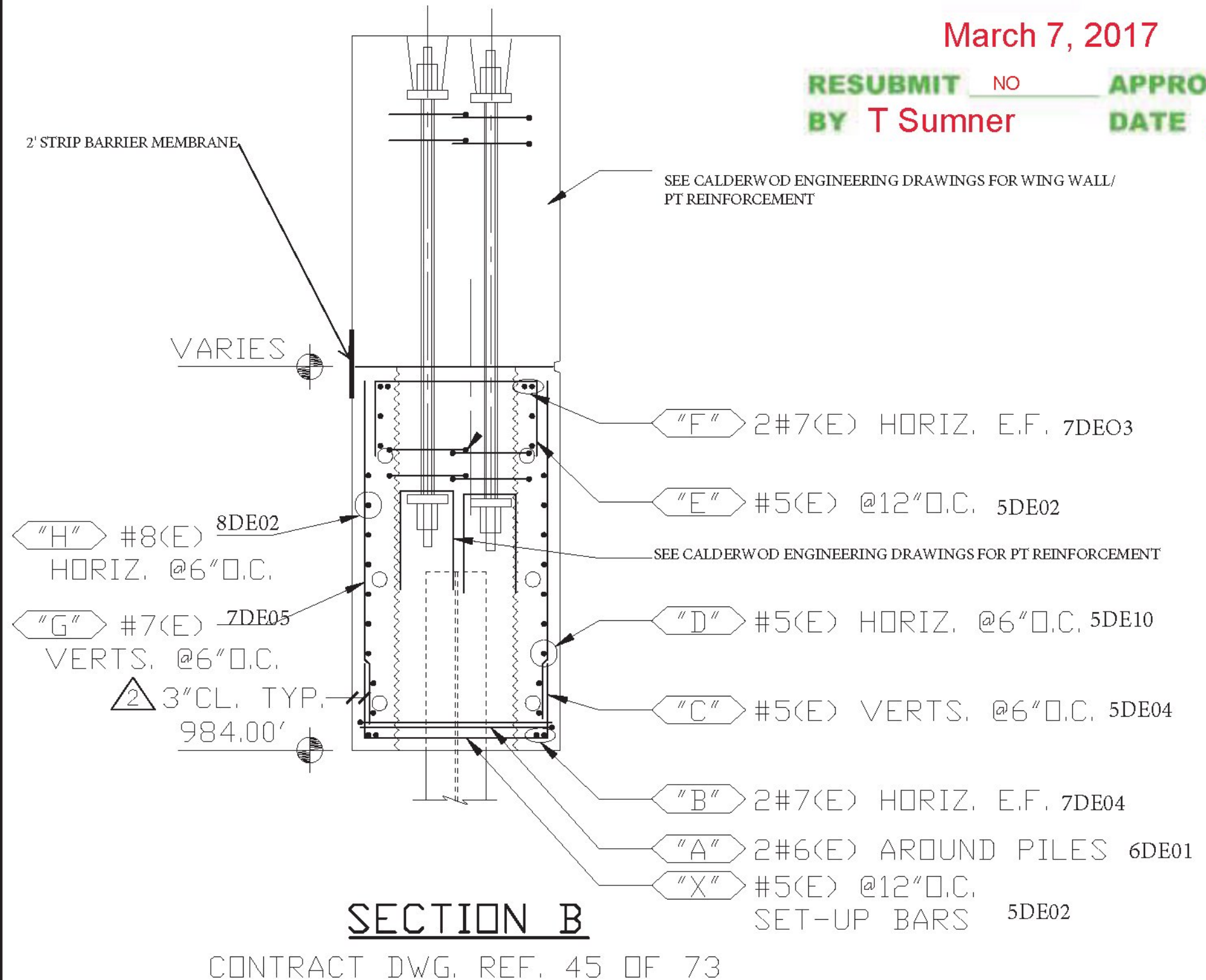
REVIEWED AS REQUIRED BY THE CONSTRUCTION CONTRACT DOCUMENTS AND APPROVED, BUT ONLY FOR CONFORMANCE TO THE DESIGN CONCEPT OF THE WORK, AND SUBJECT TO FURTHER LIMITATIONS AND REQUIREMENTS CONTAINED IN THE CONSTRUCTION CONTRACT DOCUMENTS.

REJECTED  REVISE AND RESUBMIT  FURNISH AS CORRECTED

CORRECTIONS OR COMMENTS MADE ON THE SHOP DRAWINGS DURING THIS REVIEW DO NOT RELIEVE CONTRACTOR FROM COMPLIANCE WITH REQUIREMENTS OF THE DRAWINGS AND SPECIFICATIONS. THIS CHECK IS ONLY FOR REVIEW OF GENERAL CONFORMANCE WITH THE DESIGN CONCEPT OF THE PROJECT AND GENERAL COMPLIANCE WITH THE INFORMATION GIVEN IN THE CONTRACT DOCUMENTS. THE CONTRACTOR IS RESPONSIBLE FOR CONFIRMING AND CORRELATING ALL QUANTITIES AND DIMENSIONS, SELECTING FABRICATION PROCESSES AND TECHNIQUES OF CONSTRUCTION, COORDINATING HIS WORK WITH THAT OF ALL OTHER TRADES, AND PERFORMING HIS WORK IN A SAFE AND SATISFACTORY MANNER.

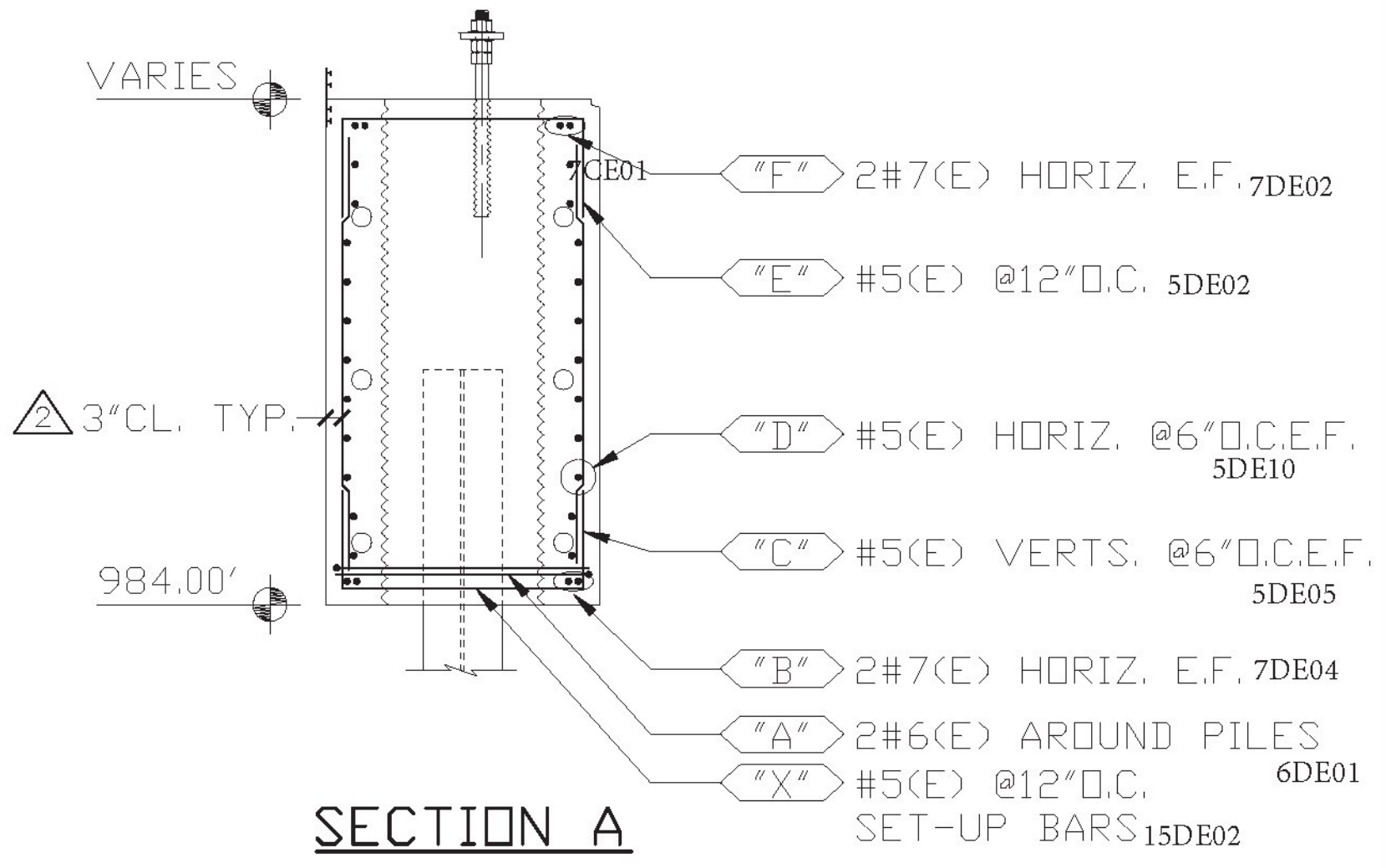
40 IDX Drive  
 Building 100, Suite 200  
 South Burlington, VT 05403  
 802.497.6100

Job Number: BRF 025-1(42)  
 Reviewed By: E.F. LAWES  
 Date: MARCH 9, 2017



**SECTION B**

CONTRACT DWG. REF. 45 OF 73



**SECTION A**

CONTRACT DWG. REF. 45 OF 73

6			
5			
4			
3	2/3/17	△	REVISED PER APPROVAL / FOR APPROVAL
2	1/3/17	△	REVISED ENTIRE DWG. PER APP'L / FOR APP'L
1	11/11/16	-	FOR APPROVAL
	DATE	REV.#	SENT FOR

**DIMENSION**  
 DIMENSION FABRICATORS INC. www.dimensionfabricators.com

2000 7TH STREET  
 SCOTIA, N.Y. 12302  
 PH: (518) 374-1936  
 FAX (518) 374-4830

STRUCTURE: VTAOT LUDLOW BRF 025-1(42)  
 VT 103, MAIN STREET (PRINCIPAL ARTERIAL)

LOCATION: TOWN OF LUDLOW, COUNTY OF WINDSOR, VT.

ARCHITECT: VHB

ENGINEER: VHB

CUSTOMER: COLD RIVER BRIDGES, LLC

DRAWN BY: CMB DATE: 11/11/16 DFI #: 10067

DRAWING COVERS: ABUTMENT NO. 2 DRAWING #: D2

**PAGE 23**