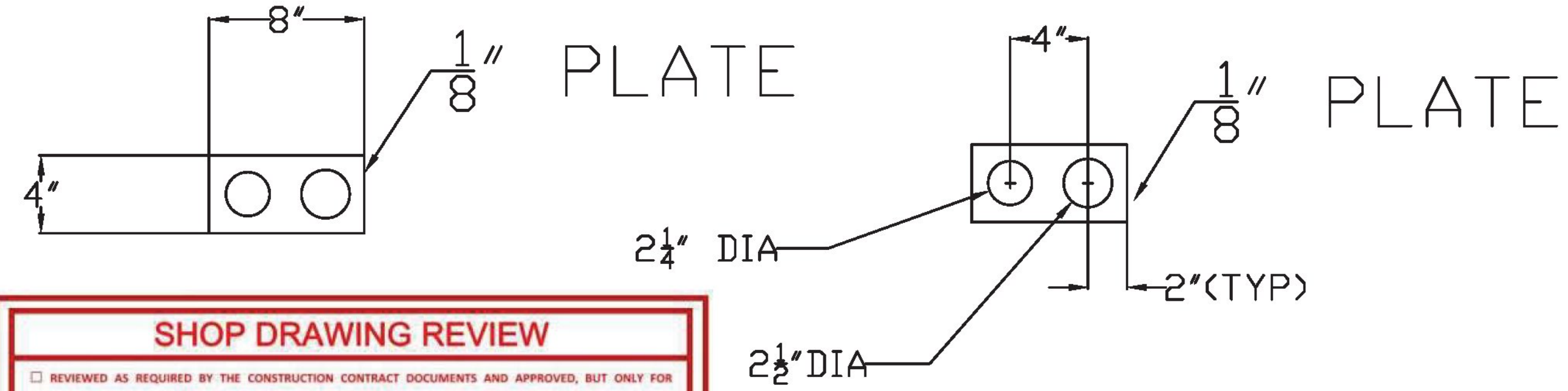
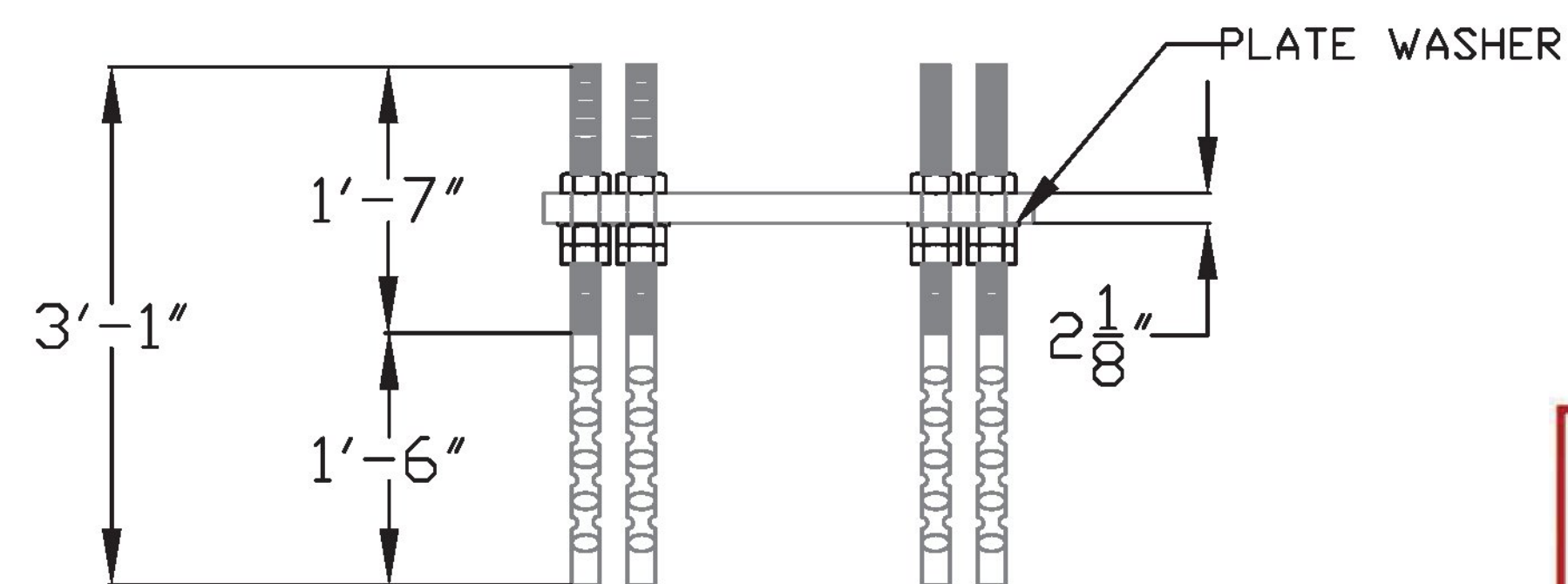


2-1/8" BEARING PLATE DETAILS

** ALL MATERIAL HOT DIP GALVANIZED

Vermont Agency of Transportation
RECEIVED
 CK'D BY VHB OK'D BY TAS
 March 7, 2017
 RESUBMIT NO APPROVED AS NOTED
 BY T Sumner DATE 3/9/17

BILL OF MATERIALS:
 2" DIA ANCHOR BOLT=96 EACH
 2" DIA HH NUT=288 EACH
 4X8 WASHER=24 EACH
 2 1/8" BEARING PLATE G2 to G11=20 EACH
 2 1/8" BEARING PLATE G1 to G12=4 EACH



DOUBLE ANCHOR BOLT ASSEMBLY

SHOP DRAWING REVIEW	
<input type="checkbox"/> REVIEWED AS REQUIRED BY THE CONSTRUCTION CONTRACT DOCUMENTS AND APPROVED, BUT ONLY FOR CONFORMANCE TO THE DESIGN CONCEPT OF THE WORK, AND SUBJECT TO FURTHER LIMITATIONS AND REQUIREMENTS CONTAINED IN THE CONSTRUCTION CONTRACT DOCUMENTS.	<input checked="" type="checkbox"/> FURNISH AS CORRECTED
<input type="checkbox"/> REJECTED	<input type="checkbox"/> REVISE AND RESUBMIT
CORRECTIONS OR COMMENTS MADE ON THE SHOP DRAWINGS DURING THIS REVIEW DO NOT RELIEVE CONTRACTOR FROM COMPLIANCE WITH REQUIREMENTS OF THE DRAWINGS AND SPECIFICATIONS. THIS CHECK IS ONLY FOR REVIEW OF GENERAL CONFORMANCE WITH THE DESIGN CONCEPT OF THE PROJECT AND GENERAL COMPLIANCE WITH THE INFORMATION GIVEN IN THE CONTRACT DOCUMENTS. THE CONTRACTOR IS RESPONSIBLE FOR: CONFIRMING AND CORRELATING ALL QUANTITIES AND DIMENSIONS; SELECTING FABRICATION PROCESSES AND TECHNIQUES OF CONSTRUCTION; COORDINATING HIS WORK WITH THAT OF ALL OTHER TRADES; AND PERFORMING HIS WORK IN A SAFE AND SATISFACTORY MANNER.	
40 IDX Drive Building 100, Suite 200 South Burlington, VT 05403 802.497.6100 	Job Number: BRF 025-1(42) Reviewed By: E.F. LAWES Date: MARCH 9, 2017

COLD RIVER BRIDGES, LLC	
10 LANBRO LANE WALPOLE, NH	
TEL 603-756-9300	FAX 603-756-9303
LUDLOW BRIDGE 0251(42)	
ANCHOR ASSEMBLIES	SHEET NUMBER
DATE: 11/18/16	13