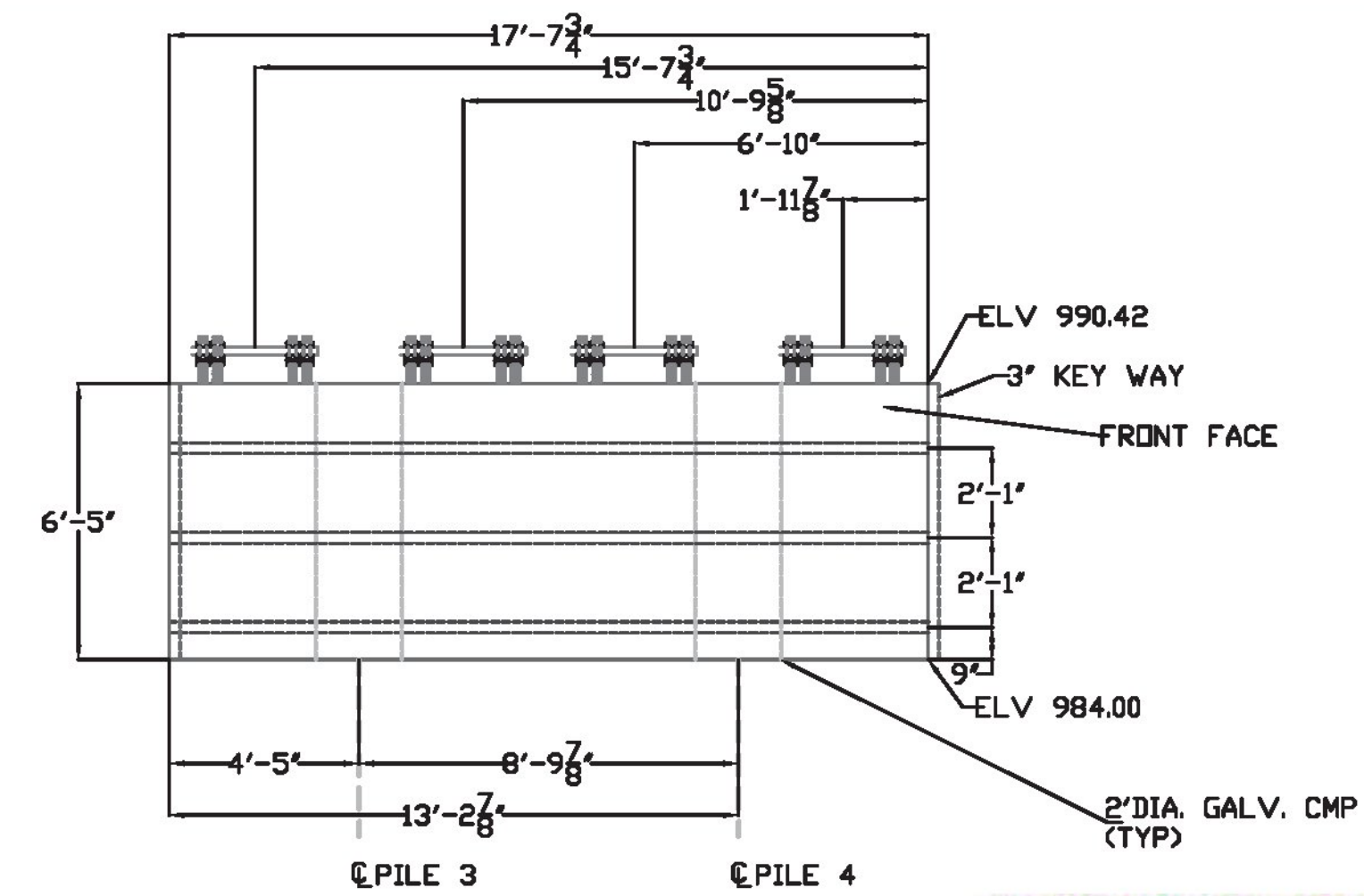


\*\*NOTE: THREAD BAR WILL BE CAST INTO ABUTMENTS LONG AND CUT TO MAINTAIN 3" CLEARANCE

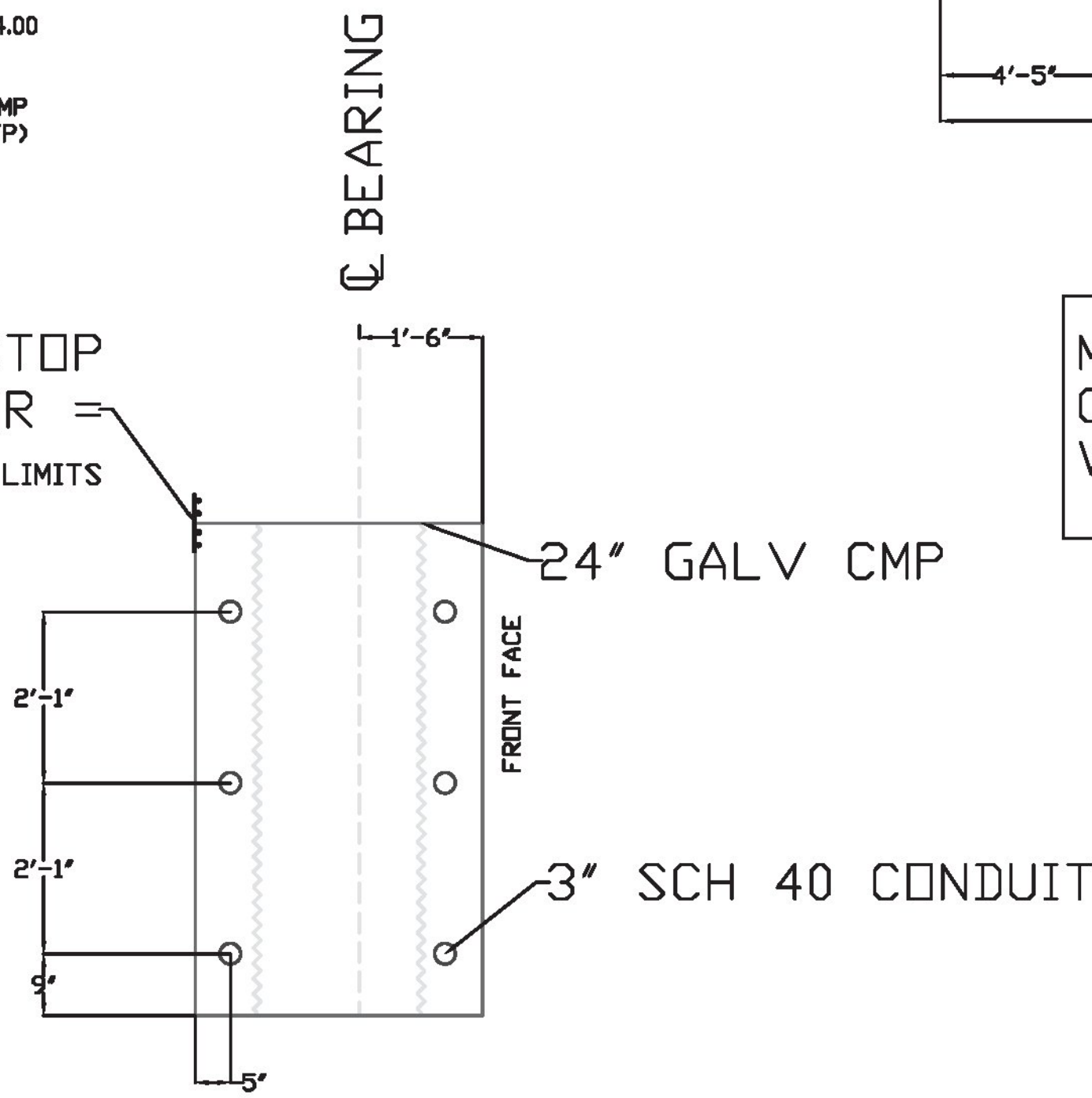
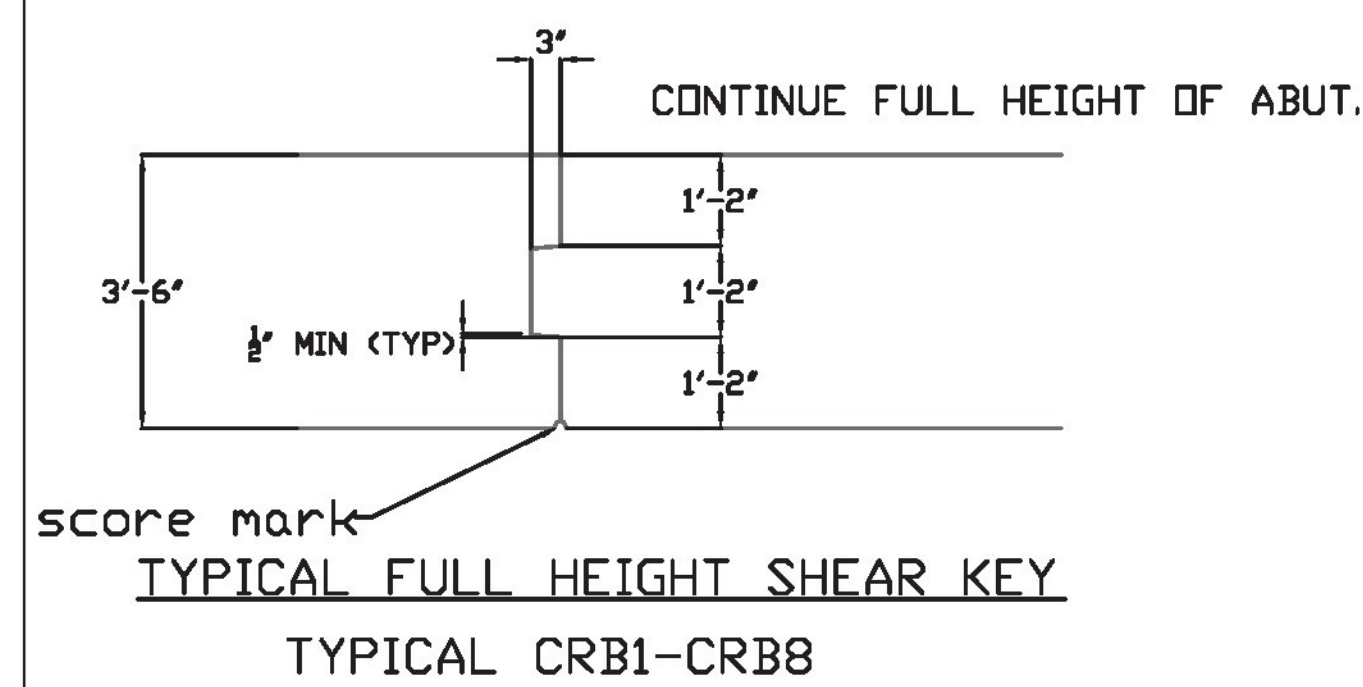


MARK:CRB1  
CY=15.7  
WEIGHT=51.6K

PVC WATERSTOP  
TYPE 771 OR  
SEE SHEET 2 FOR WATER STOP LIMITS

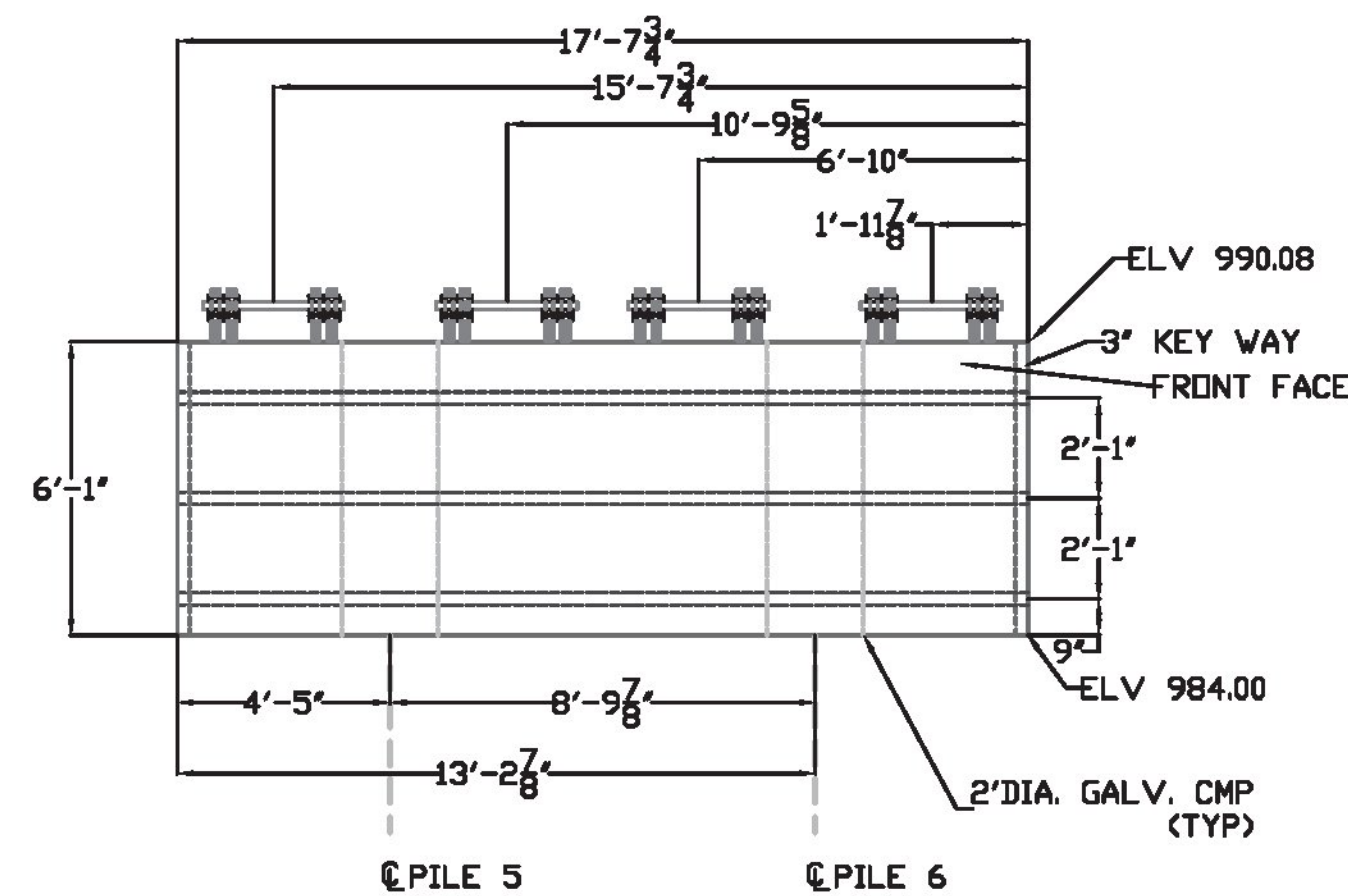
MARK:CRB2  
CY=13  
WEIGHT=42.9K

Vermont Agency of Transportation  
**RECEIVED**  
CK'D BY VHB OK'D BY TAS  
March 7, 2017  
RESUBMIT NO APPROVED AS NOTED  
BY T Sumner DATE 3/9/17

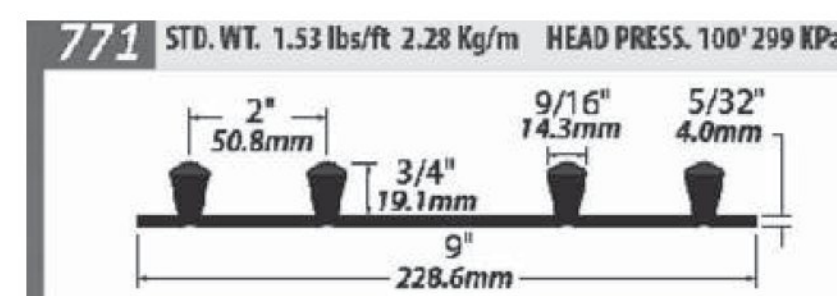


1.5" CLEAR BETWEEN PILE CAVITY AND ANCHOR BOLTS AS SHOWN. VERIFIED IN FIELD 1.5" CLEARANCE; EXTRA CARE SHALL BE TAKEN TO ENSURE CONCRETE CONSOLIDATION AROUND ANCHOR BOLT

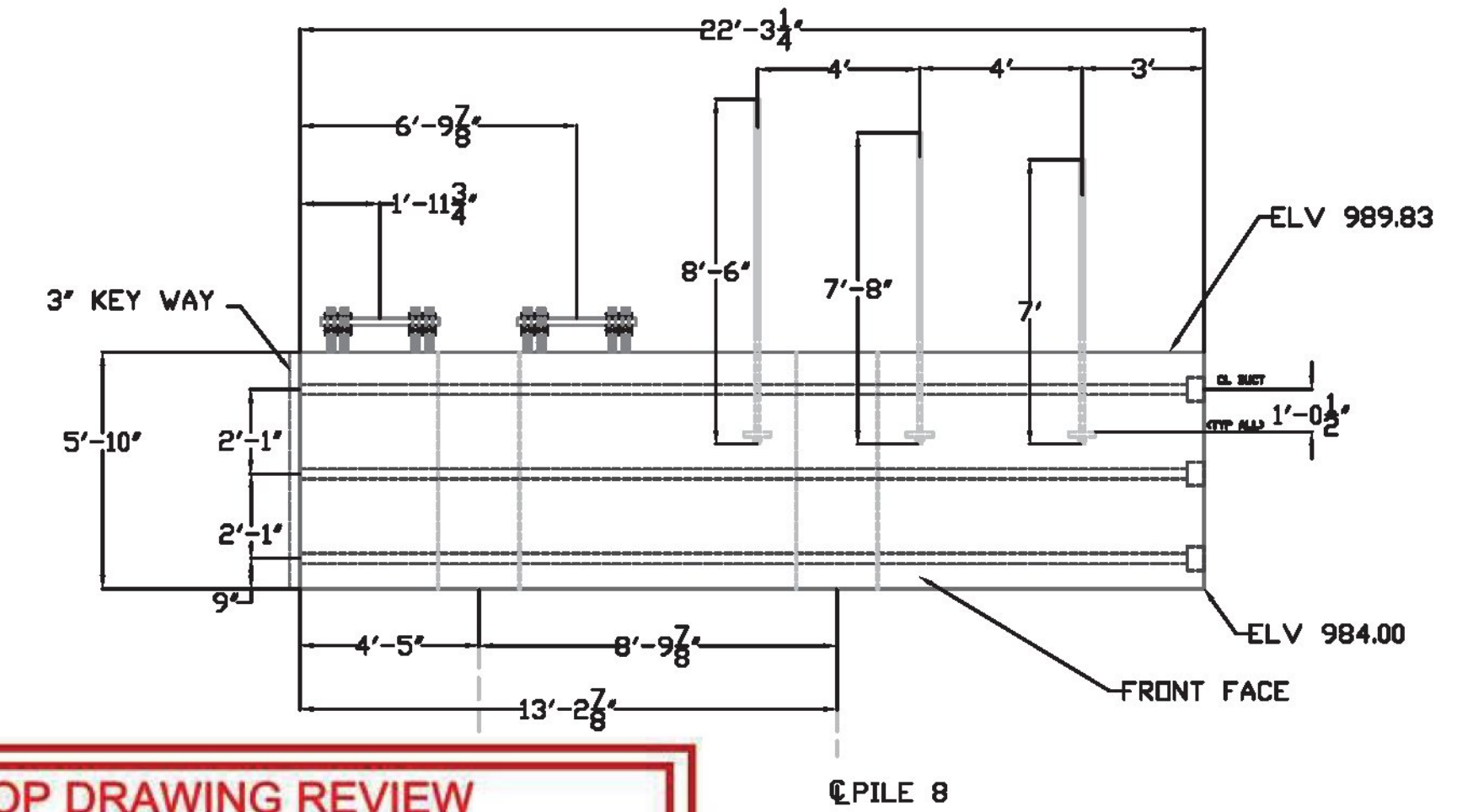
ABUTMENT TYP SECT.  
SEE SHEET 16 FOR WING WALL/ABUT SECTION



MARK:CRB3  
CY=12.3  
WEIGHT=40.7K



TYPE 771  
WATERSTOP  
52'-3" +/-  
REQUIRED  
PER ABUTMENT



**SHOP DRAWING REVIEW**

REVIEWED AS REQUIRED BY THE CONSTRUCTION CONTRACT DOCUMENTS AND APPROVED, BUT ONLY FOR CONFORMANCE TO THE DESIGN CONCEPT OF THE WORK, AND SUBJECT TO FURTHER LIMITATIONS AND REQUIREMENTS CONTAINED IN THE CONSTRUCTION CONTRACT DOCUMENTS.  
 REJECTED  REVISE AND RESUBMIT  FURNISH AS CORRECTED

CORRECTIONS OR COMMENTS MADE ON THE SHOP DRAWINGS DURING THIS REVIEW DO NOT RELIEVE CONTRACTOR FROM COMPLIANCE WITH REQUIREMENTS OF THE DRAWINGS AND SPECIFICATIONS. THIS CHECK IS ONLY FOR REVIEW OF GENERAL CONFORMANCE WITH THE DESIGN CONCEPT OF THE PROJECT AND GENERAL COMPLIANCE WITH THE INFORMATION GIVEN IN THE CONTRACT DOCUMENTS. THE CONTRACTOR IS RESPONSIBLE FOR: CONFIRMING AND CORRELATING ALL QUANTITIES AND DIMENSIONS; SELECTING FABRICATION PROCESSES AND TECHNIQUES OF CONSTRUCTION; COORDINATING HIS WORK WITH THAT OF ALL OTHER TRADES; AND PERFORMING HIS WORK IN A SAFE AND SATISFACTORY MANNER.

40 IDX Drive  
Building 100, Suite 200  
South Burlington, VT 05403  
802.497.6100

Job Number: BRF 025-1(42)  
Reviewed By: E.F. LAWES  
Date: MARCH 9, 2017

COLD RIVER BRIDGES, LLC  
10 LANBRO LANE  
WALPOLE, NH FAX 603-756-9303  
LUDLOW BRIDGE 0251(42)  
ABUTMENT #1 PLAN SHEET NUMBER  
DATE: 11/18/16 3

\*\* SEE SHEET 6 FOR KEY WAY DETAILS