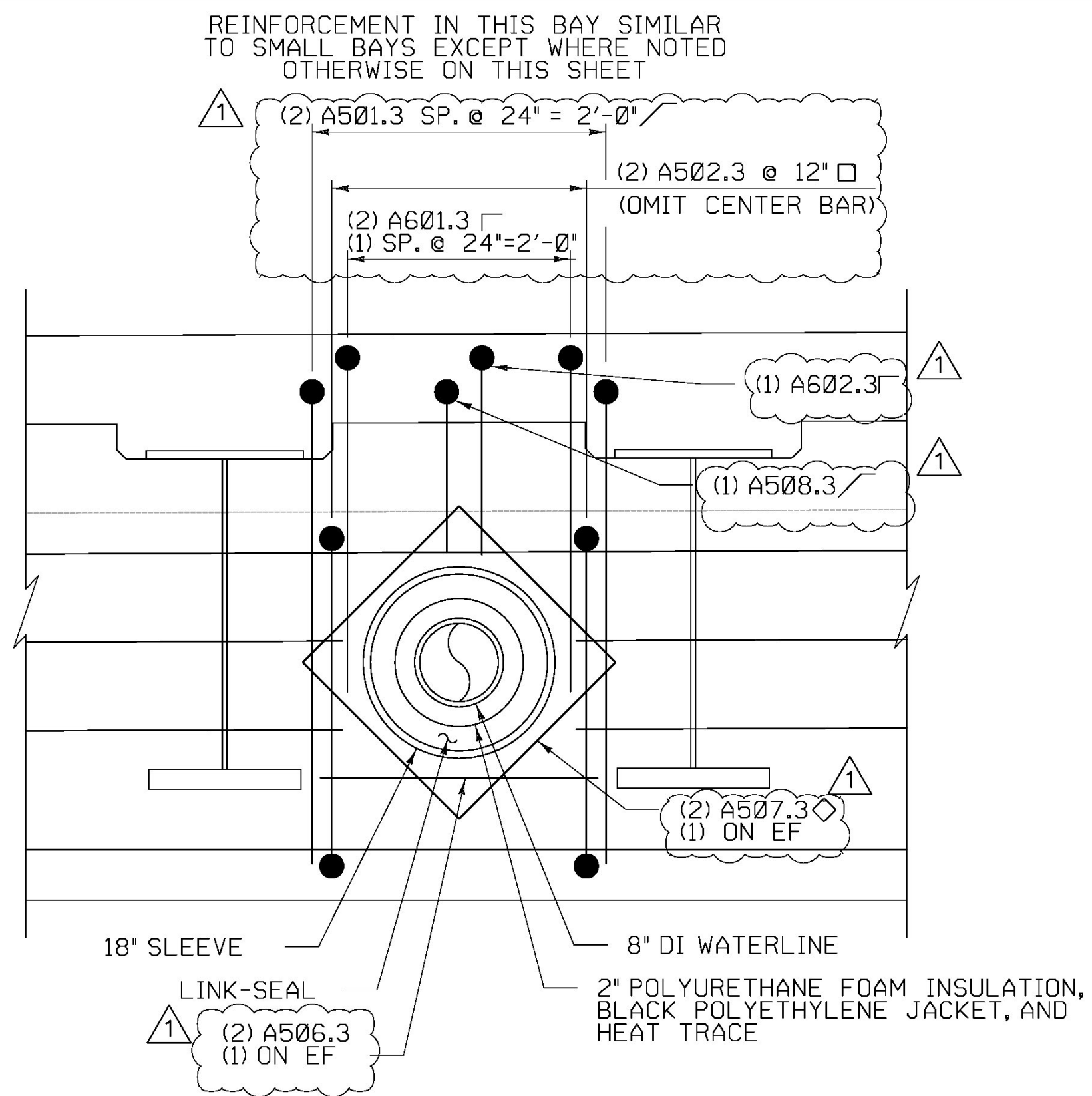
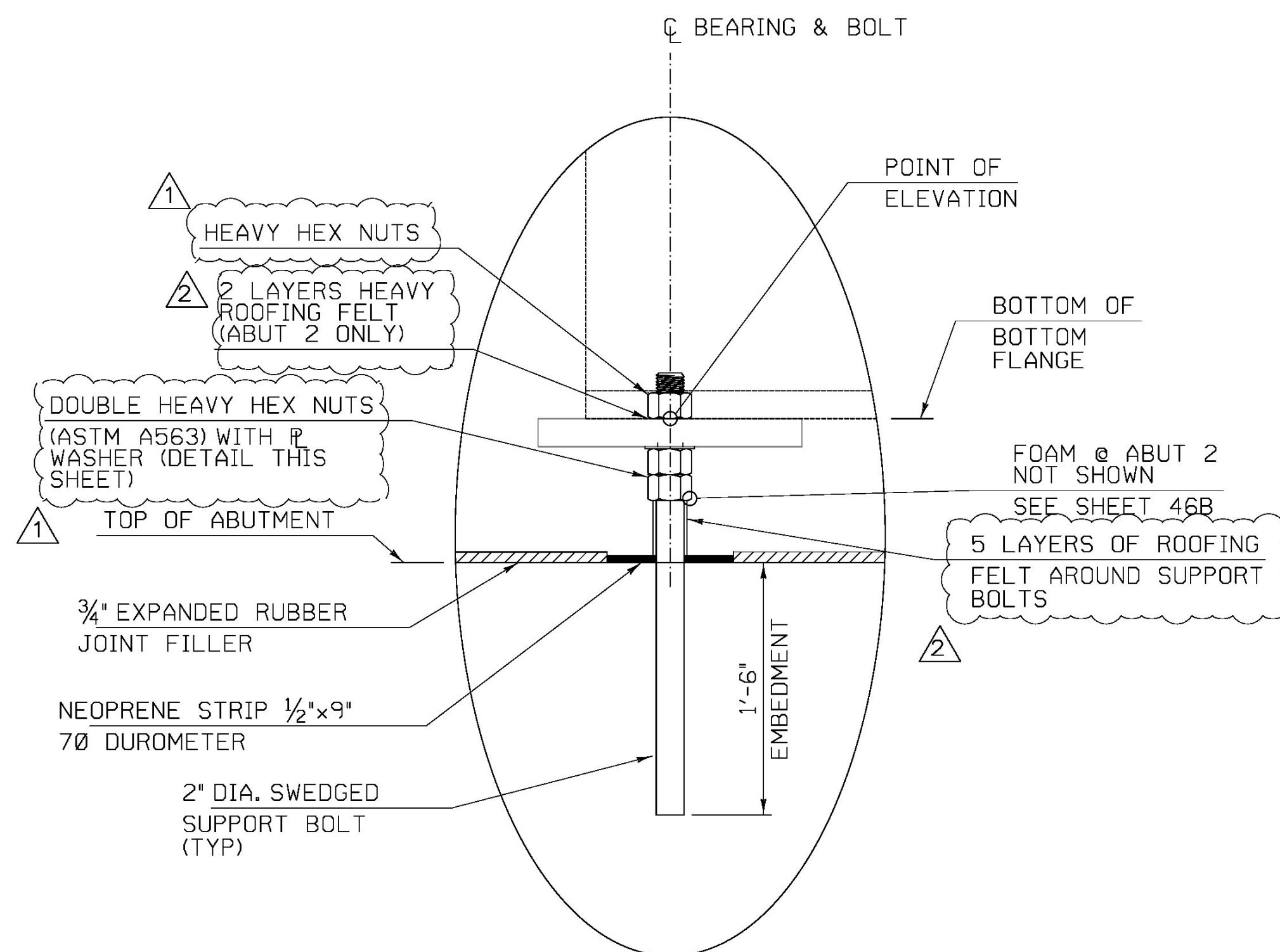


SUPPORT BOLT LAYOUT
SCALE 1 1/2" = 1'-0"

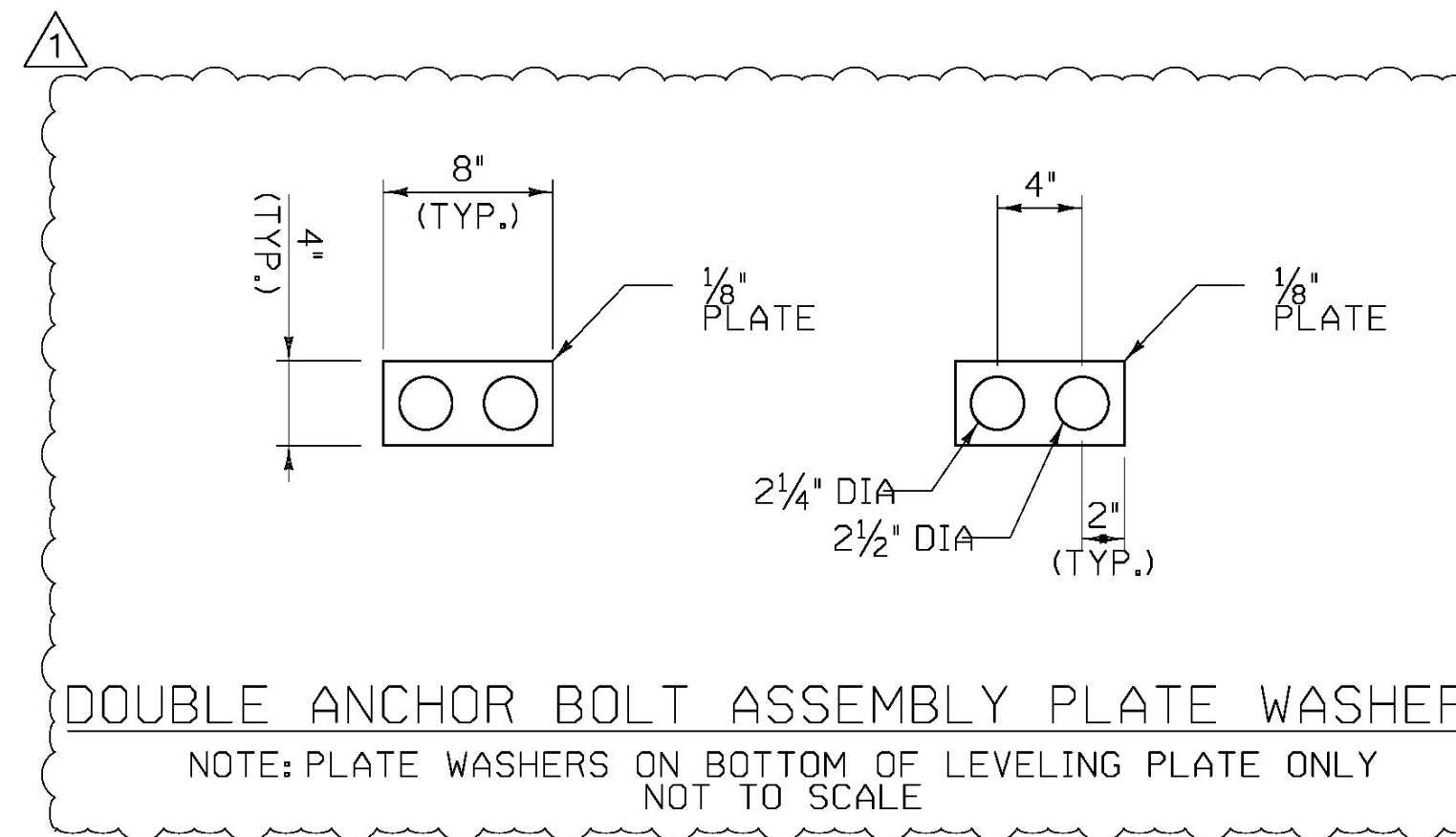


WATERLINE ABUTMENT PENETRATION DETAIL
NOT TO SCALE

- NOTES:**
- SPACE BARS TO MAINTAIN 1 1/2" MIN CLR AROUND SLEEVE. FIELD CUT CENTER BARS TO MAINTAIN 1 1/2" MIN CLR AROUND SLEEVE.
 - SLEEVE SHALL BE STEEL WITH 18" INSIDE DIA. AND SHALL BE COMPATIBLE WITH LINK-SEAL AND REINFORCING LAYOUT.



SECTION A-A
SUPPORT BOLT DETAIL (TYP)
SCALE 1 1/2" = 1'-0"

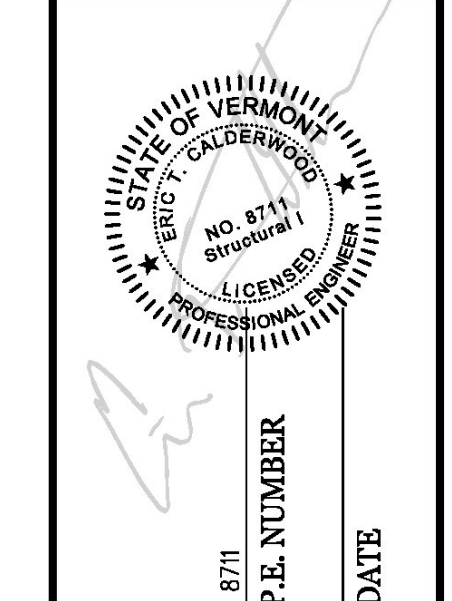


DOUBLE ANCHOR BOLT ASSEMBLY PLATE WASHER
NOTE: PLATE WASHERS ON BOTTOM OF LEVELING PLATE ONLY
NOT TO SCALE

- NOTE:**
- NF = NEAR FACE
 - FF = FAR FACE
 - EF = EACH FACE
 - ▲ = CUT TO FIT IN FIELD
 - 3" CLEAR, UNLESS OTHERWISE SPECIFIED ON THE PLANS.
 - 2'-2" BAR LAP UNLESS OTHERWISE SPECIFIED ON THE PLANS.

- NOTES:**
- SEE ABUTMENT DETAILS (1 OF 3) AND PROJECT NOTES FOR ADDITIONAL FABRICATION, CONSTRUCTION, AND SEQUENCE NOTES.
 - ANCHOR BOLTS TO BE CAST IN PLACE.

CALDERWOOD ENGINEERING, ETC.
STRUCTURAL ENGINEERING • DETAILING • SURVEYING
222 RIVER RD. RICHMOND, ME 04357 PH/FX (207) 37-2007/207 787-2008
PREPARED FOR: **COLD RIVER BRIDGES, LLC**
CEE 16-16-COLD RIVER BRIDGES
01-CS-LUDLOW



DATE	BY	DESIGN-DETAILED	CHECKED-REVIEWED	REVISIONS 1	REVISIONS 2	REVISIONS 3	REVISIONS 4	FIELD CHANGES
JAN 2017	TDC							
MAR 2017	TDC							
APR 2017	TDC							

VE SUPER DESIGN
LUDLOW VT. BR# 025-1(42)
ABUTMENT DETAILS (2 OF 4)

SHEET NUMBER
46
of 73

