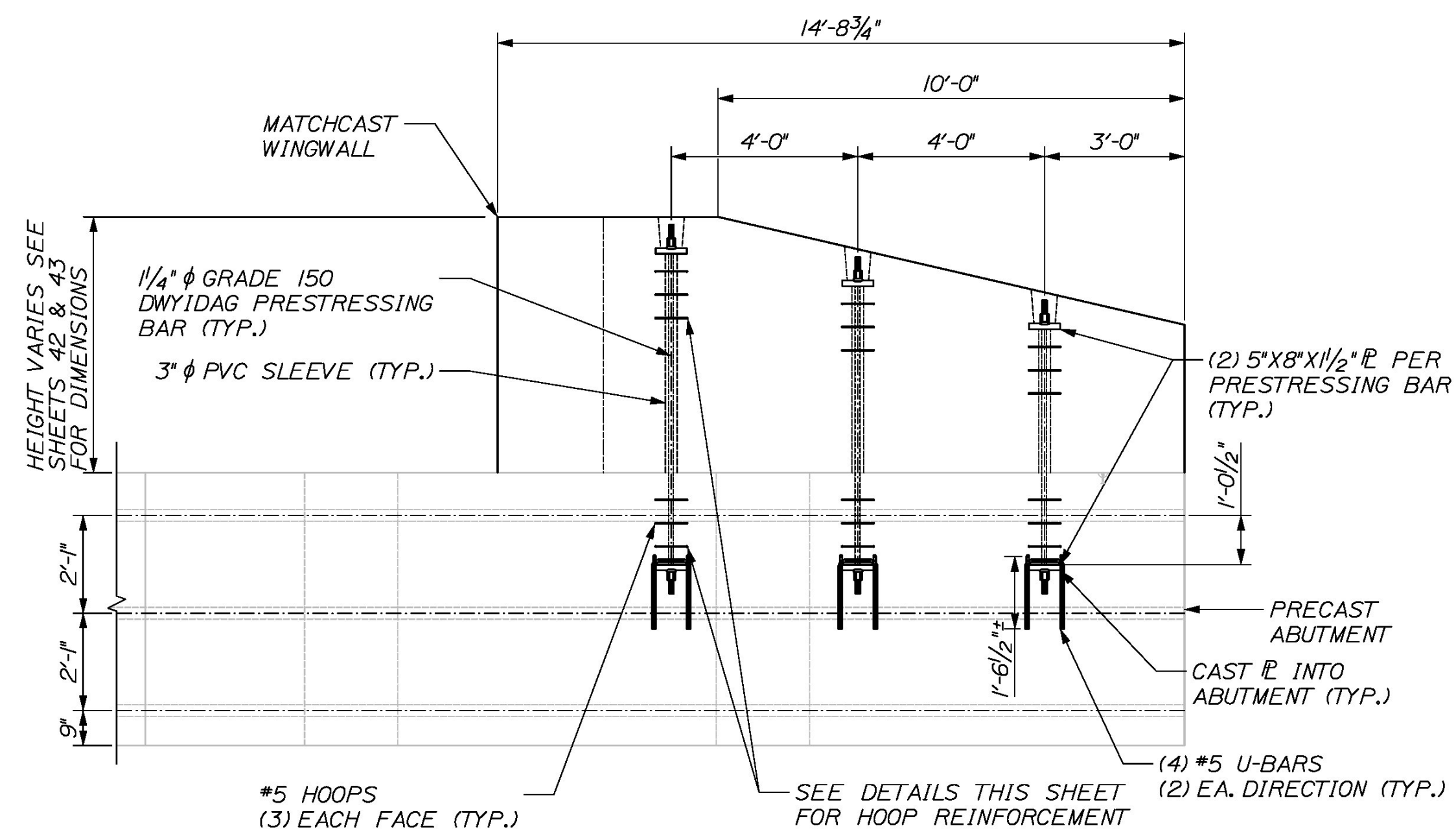


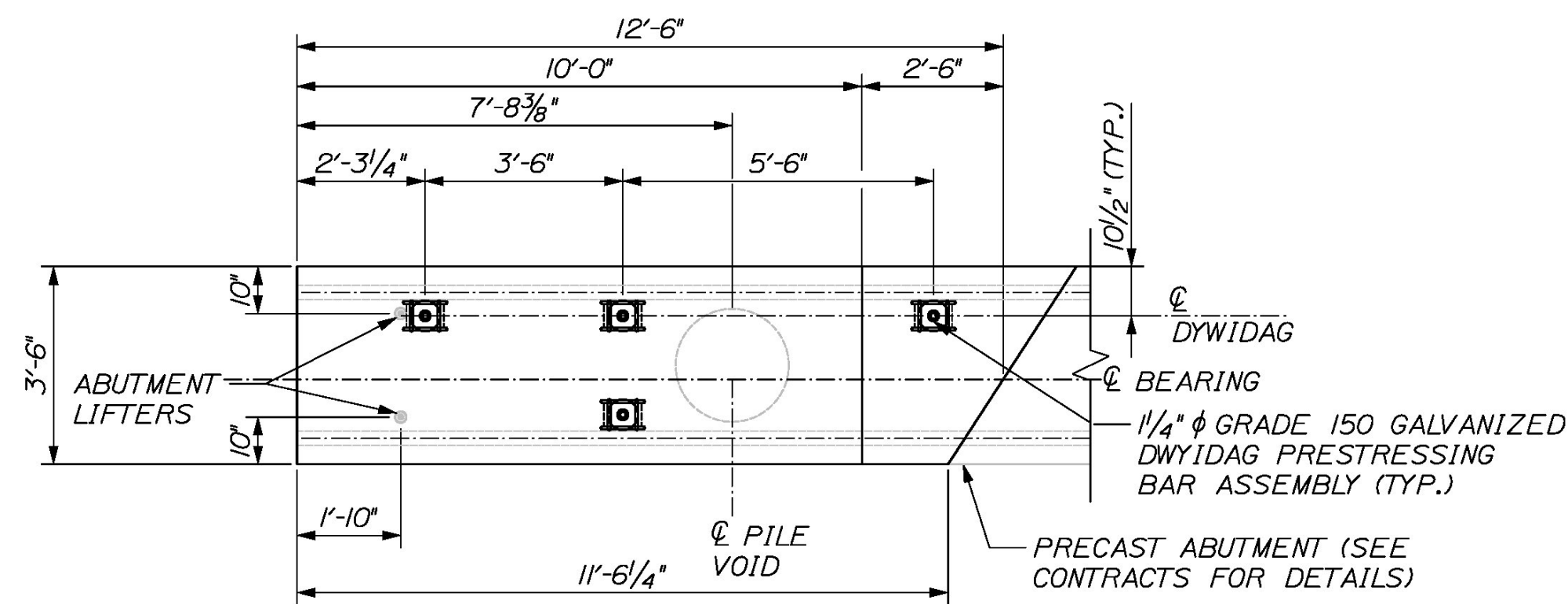
WINGWALL 2 POST-TENSIONING ELEVATION

NOTE: WINGWALL 3 SIMILAR
SCALE: 3/8" = 1'-0"



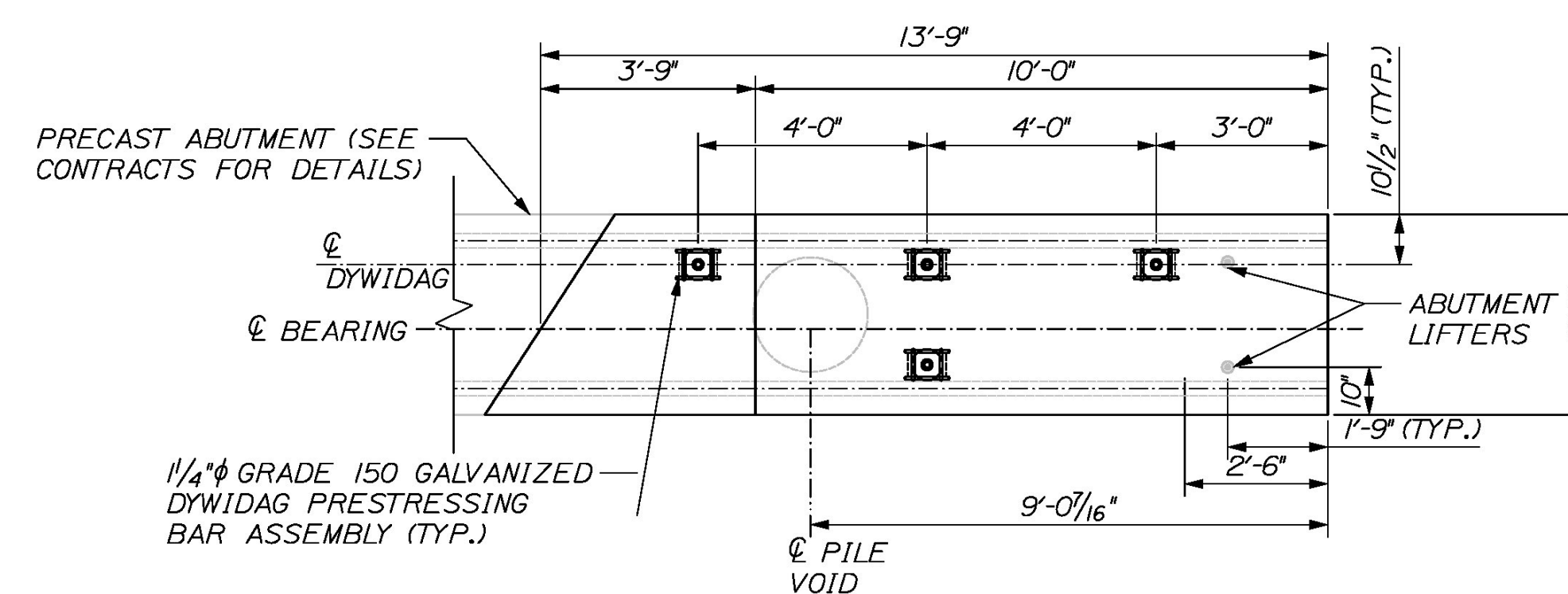
WINGWALL 1 POST-TENSIONING ELEVATION

NOTE: WINGWALL 4 SIMILAR
SCALE: 3/8" = 1'-0"



WINGWALL 2 POST-TENSIONING PLAN

NOTE: WINGWALL 3 SIMILAR
SCALE: 3/8" = 1'-0"

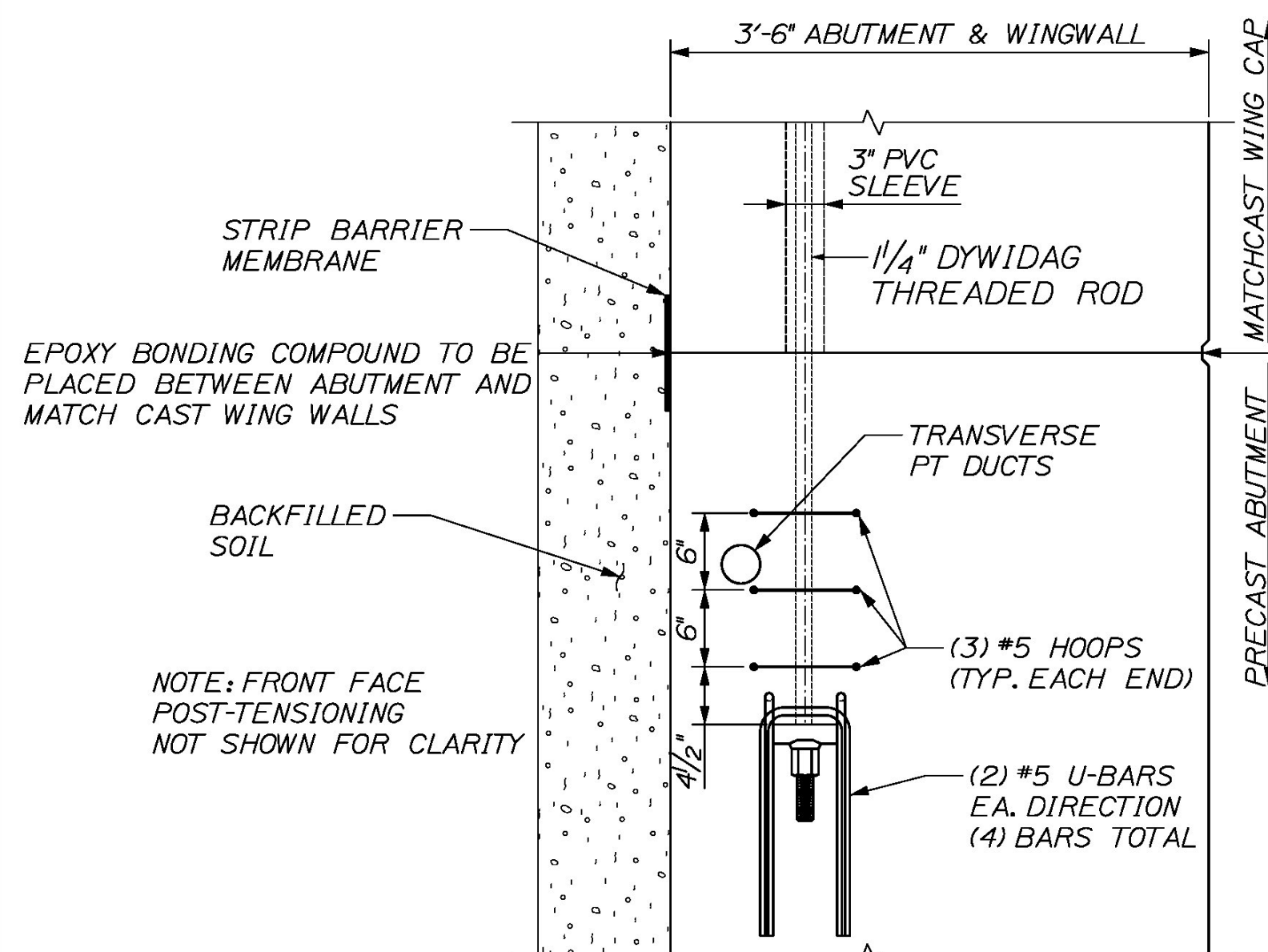


WINGWALL 1 POST-TENSIONING PLAN

NOTE: WINGWALL 4 SIMILAR
SCALE: 3/8" = 1'-0"

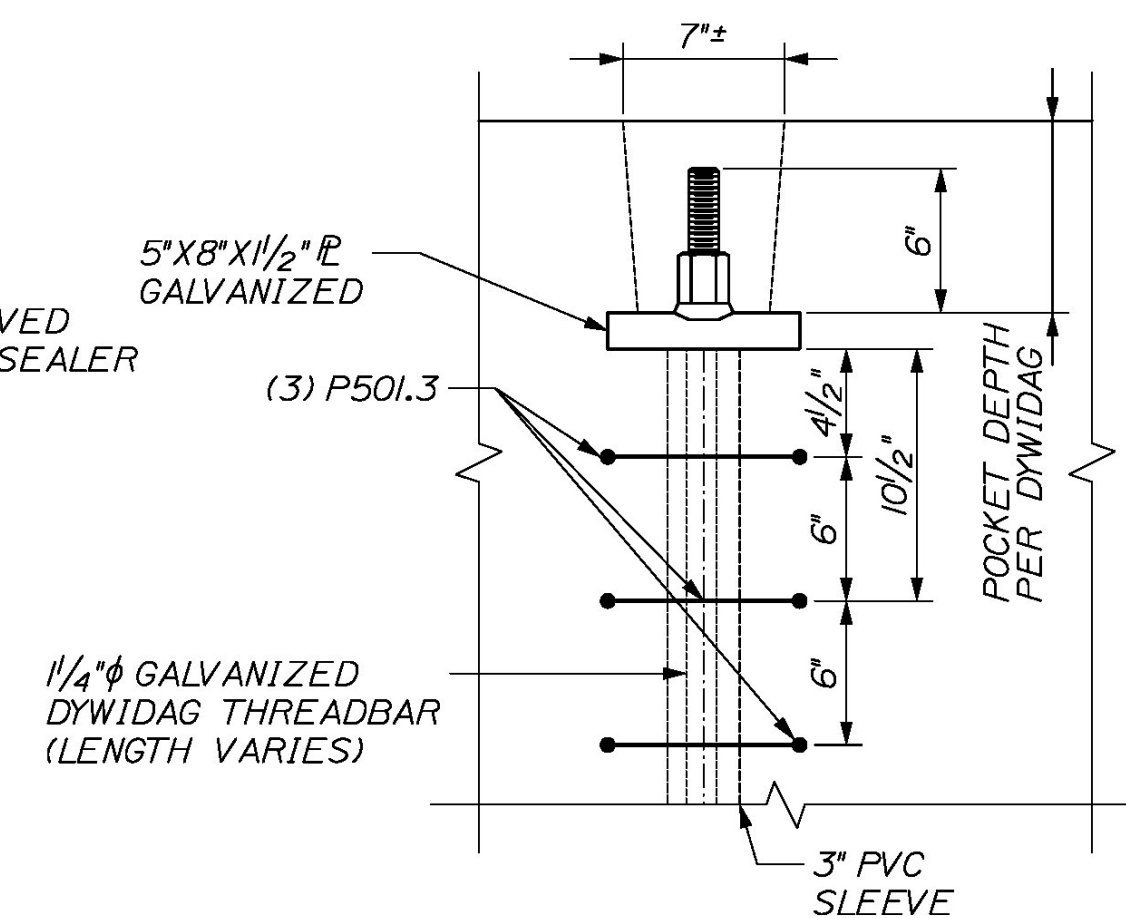
POST-TENSIONING NOTES

- #5 HOOPS BY PRECASTER
- REINFORCEMENT FOR ABUTMENT AND MATCH CAST WINGS NOT SHOWN. SEE SHEETS 44 AND 45
- PLATE TO BE A36 GALVANIZED PER ASTM A 123
- THREADBAR AND HARDWARE TO BE GALVANIZED PER ASTM A 153
- FPU = 150KSI FOR THREADBAR PER DYWIDAG
- THREADBARS SHALL BE PULLED TO A MAXIMUM OF 120 KSI AND LOCKED OFF AT A MINIMUM OF 105 KSI
- INSTALL APPROVED NON-SHRINK GROUT TO FILL PT BAR POCKET
- REQUIRED COMPRESSIVE STRENGTH OF CONCRETE TO BE 4 KSI
- CONTRACTOR WILL USE SIKADUR 42 GROUT-PAK PT BETWEEN PRECAST ABUTMENT AND MATCHCAST WINGWALL
- CONTRACTOR SHALL USE A CALIBRATED JACK TO POST-TENSION THREADBARS TO ENSURE THAT TENSION LIMITS ARE NOT EXCEEDED



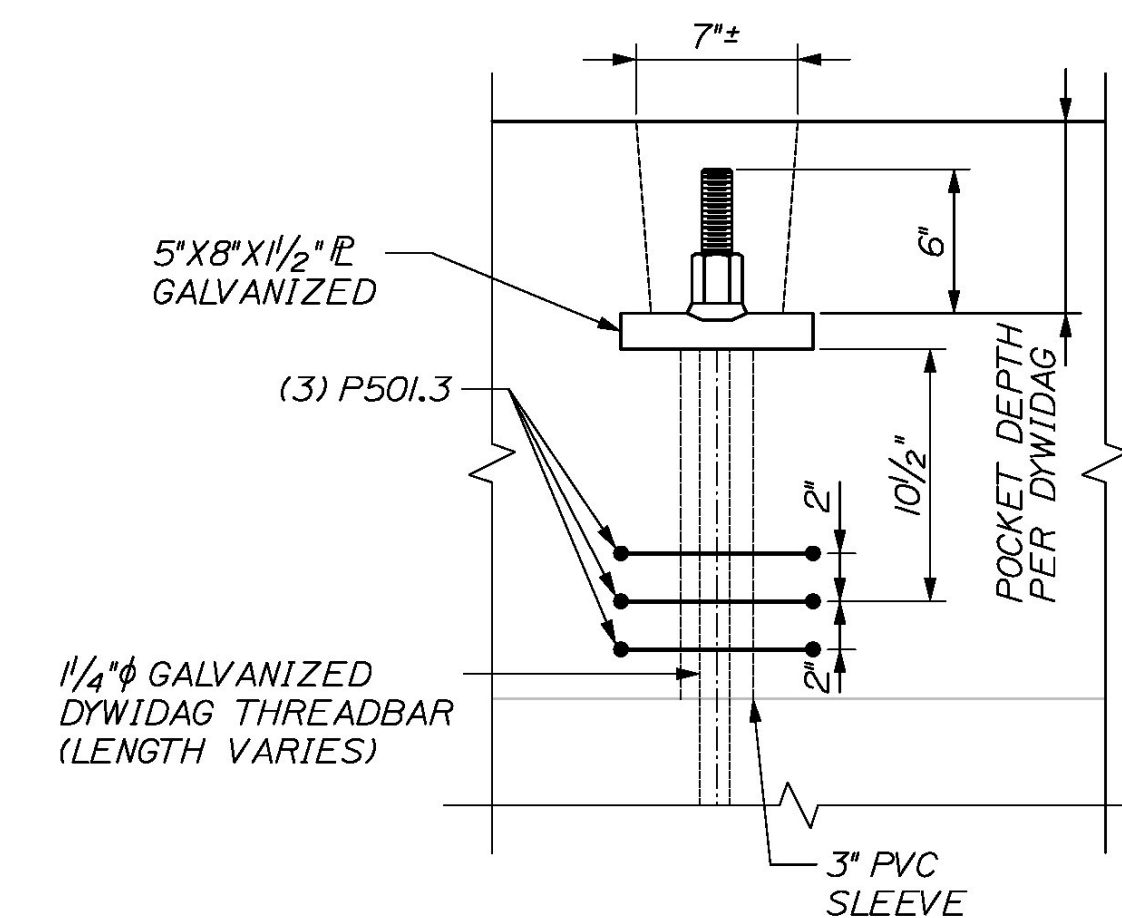
ABUTMENT/WINGWALL CONNECTION DETAIL

SCALE: 1" = 1'-0"



POST-TENSIONING BAR POCKET DETAIL (TYP)

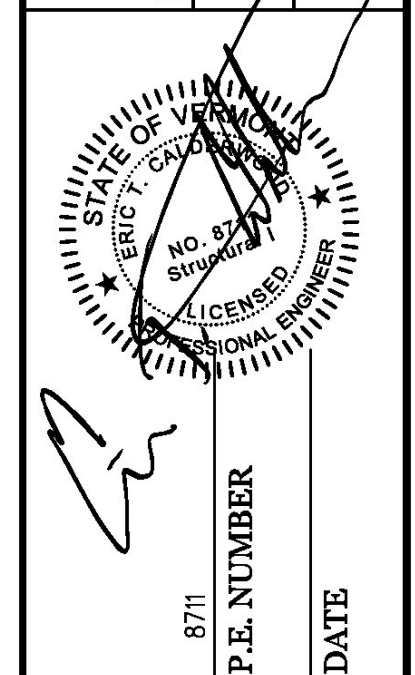
SCALE: 1/2" = 1'-0"



WW2 POST-TENSIONING POCKET DETAIL

SCALE: 1/2" = 1'-0"

CALDERWOOD ENGINEERING, ETC.
STRUCTURAL ENGINEERING • DETAILING SERVICES
222 RIVER RD. RICHMOND, ME 04357 PH/FX (207) 737-2007/(207) 737-2008
PREPARED FOR:
COLD RIVER BRIDGES, LLC
CEE 16-16-COLD RIVER BRIDGES
01-CS-LUDLOW



DATE	FEB 2017
BY	TDC
DESIGN-DRAWN	
CHECKED-REVIEWED	
REVISIONS 1	
REVISIONS 2	
REVISIONS 3	
REVISIONS 4	
FIELD CHANGES	

VE SUPER DESIGN
LUDLOW VT. BR# 025-1(42)
WINGWALL POST-TENSIONING DIMENSIONS

SHEET NUMBER

43a

of 73

