

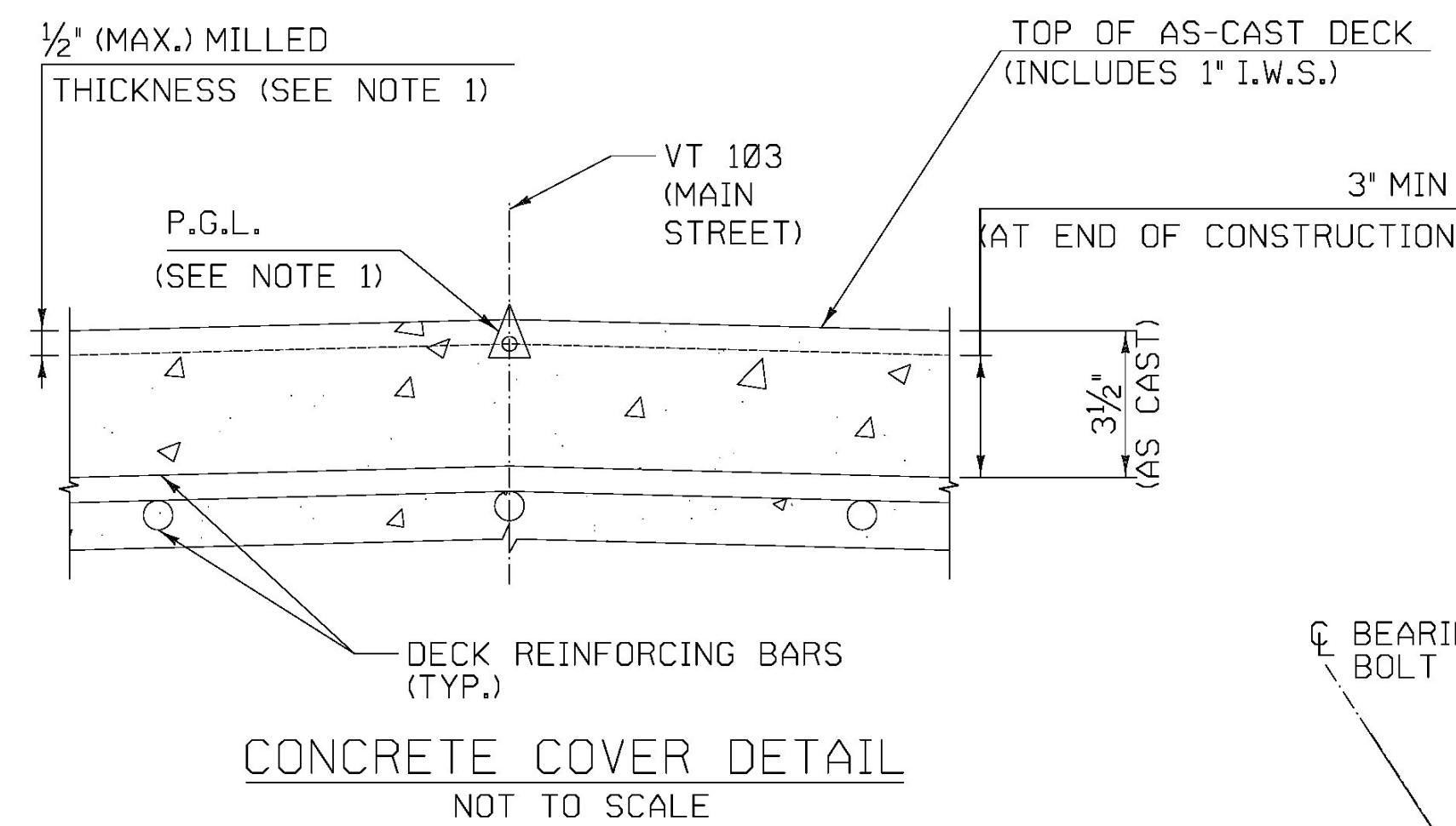
* - SEE FRAMING PLAN FOR CONNECTION PLATE AND DIAPHRAGM LOCATIONS
 ** - SEE PROJECT NOTES SHEET FOR STUD HEIGHT REQUIREMENTS

GIRDER ELEVATION

HORIZ SCALE 1/6" = 1'-0"
 VERT SCALE 3/4" = 1'-0"

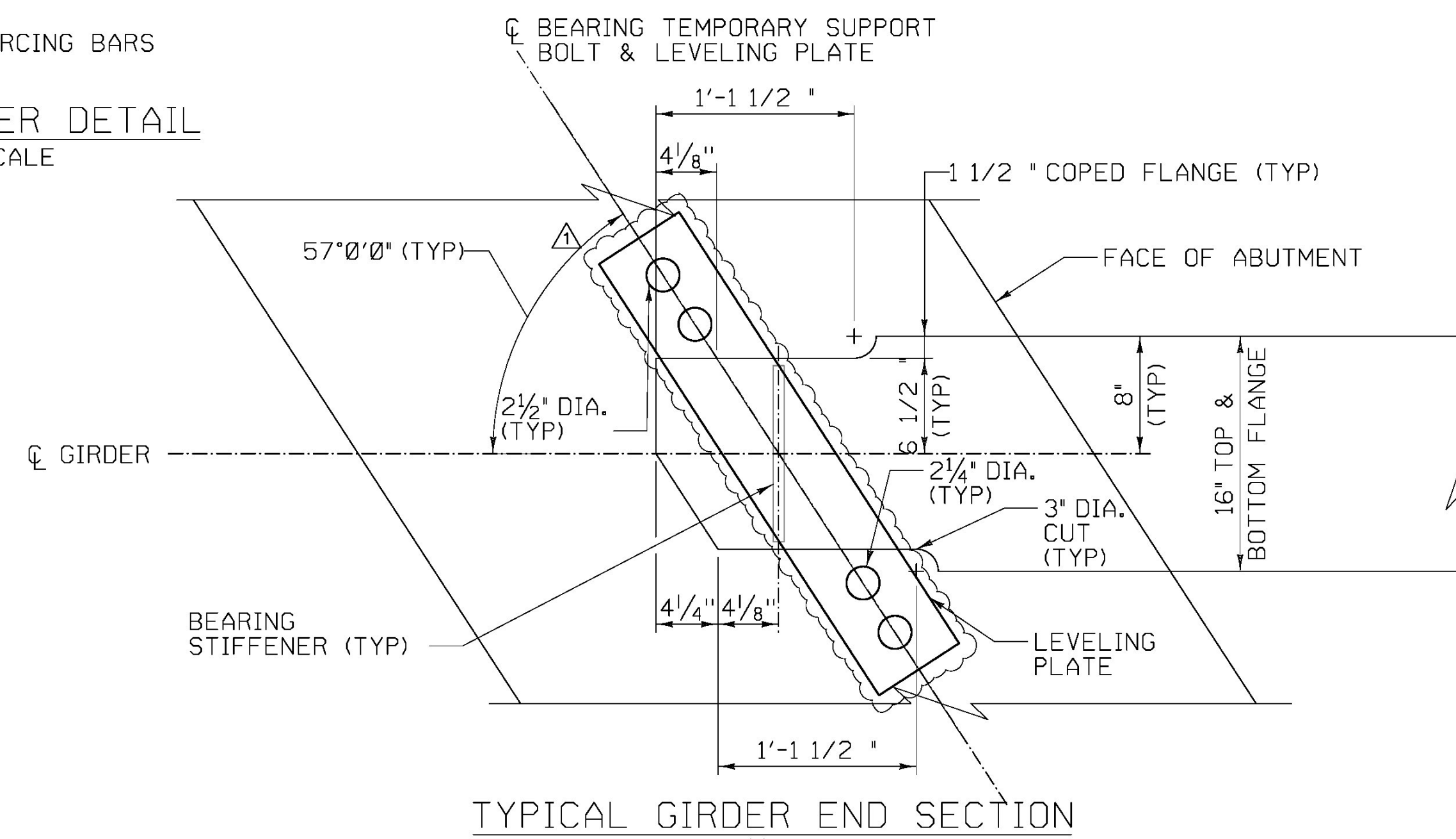
CVN = CHARPY V-NOTCH TEST IN ACCORDANCE WITH SUBSECTION 714.01

CAMBER & DEFLECTION - GIRDERS 1 THRU 12 (INCHES)											
POINT ON GIRDER	0	0.1L	0.2L	0.3L	0.4L	0.5L	0.6L	0.7L	0.8L	0.9L	0
STEEL DL	0.00	0.55	1.03	1.42	1.66	1.74	1.66	1.42	1.03	0.55	0.00
CONCRETE SLAB	0.00	1.11	2.11	2.88	3.38	3.55	3.38	2.88	2.11	1.11	0.00
SUPERIMPOSED DL	0.00	0.33	0.62	0.84	0.99	1.04	0.99	0.84	0.62	0.33	0.00
TOTAL DEFLECTION	0.00	1.99	3.76	5.14	6.02	6.33	6.02	5.14	3.76	1.99	0.00
RESIDUAL CAMBER	0.00	0.51	0.98	1.35	1.61	1.74	1.71	1.50	1.13	0.61	0.00
TOTAL CAMBER	0.00	2.50	4.74	6.50	7.64	8.06	7.73	6.64	4.89	2.60	0.00

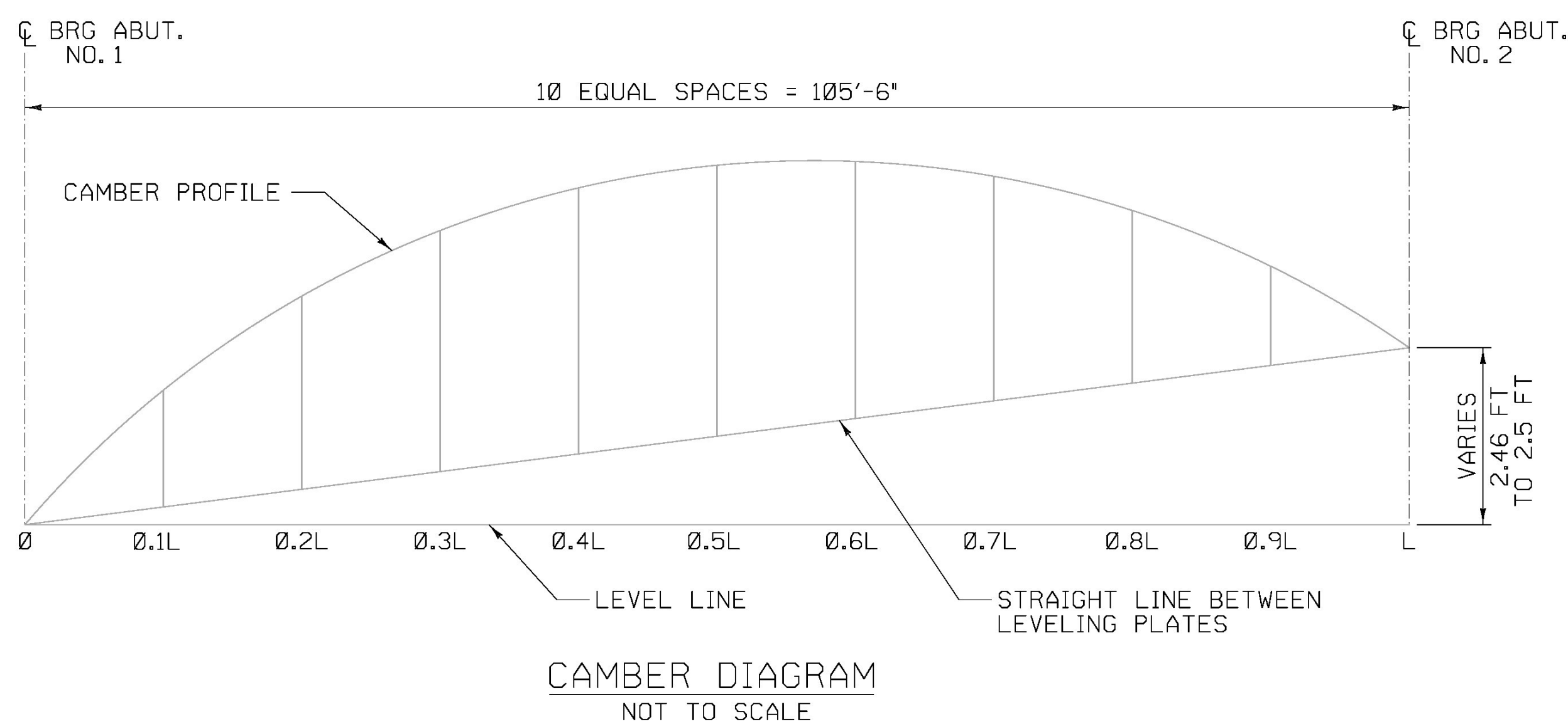


NOTES:

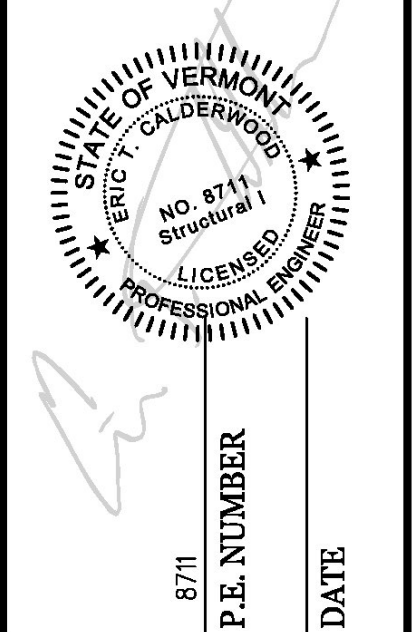
- AS MILLED THICKNESS OF 1/2" FOR RIDEABILITY IS ASSUMED FOR DEFINITION OF P.G.L. (TOP OF OF AS-CAST DECK IS 1/2" ABOVE P.G.L.)
- P.G.L. DENOTES PROFILE GRADE LINE.
- I.W.S. DENOTES INTEGRAL WEARING SURFACE



NOTE: ABUTMENT 1 END SHOWN, ABUTMENT 2 SIMILAR, SEE SHEETS 46 & 46A FOR BEARING PLATE DETAILS



CALDERWOOD ENGINEERING, ETC.
 STRUCTURAL ENGINEERING • DESIGNATING SERVICES
 222 RIVER RD. RICHMOND, ME 04357 PH/FX (207) 737-2008
 PREPARED FOR:
COLD RIVER BRIDGES, LLC
 CEE 16-16-COLD RIVER BRIDGES
 01-CS-LUDLOW



DATE	BY	DESIGN-DRAWN	CHECKED-REVIEWED	REVISIONS 1	REVISIONS 2	REVISIONS 3	REVISIONS 4	FIELD CHANGES
JAN 2017	TDC							
MAR 2017	TDC							

VE SUPER DESIGN
LUDLOW VT. BRF 025-1(42)
GIRDER DETAILS

SHEET NUMBER
39
 of 73

