

SOLID ROCK EXCAVATION
 STA. 100+94 - 102+13, RT
 STA. 102+10 - 102+56, LT
 STA. 102+50 - 102+77, RT
 STA. 103+39 - 104+71, LT
 STA. 103+60 - 104+75, RT
 STA. 1+58 - 2+28, RT

REMOVAL OF EXISTING CURB
 STA. 100+94 - 101+16, RT
 STA. 101+35 - 102+18, RT
 STA. 102+16 - 102+57, LT
 STA. 102+50 - 102+75, RT
 STA. 103+43 - 103+82, LT
 STA. 103+60 - 105+24, RT
 STA. 104+34 - 104+70, LT
 STA. 1+58 - 2+28, RT

VERTICAL GRANITE CURB
 STA. 101+35 - 102+19, RT
 STA. 102+10 - 102+44, LT
 STA. 102+50 - 102+65, RT
 STA. 103+54 - 103+88, LT
 STA. 104+28 - 104+63, LT
 STA. 103+75 - 105+25, RT
 STA. 1+58 - 2+28, RT

PORTLAND CEMENT CONCRETE SIDEWALK, 8 INCH
 STA. 103+88 - 104+28, LT

PORTLAND CEMENT CONCRETE SIDEWALK, 5 INCH
 STA. 100+94 - 102+14, RT
 STA. 102+10 - 102+42, LT
 STA. 102+50 - 102+68, RT
 STA. 103+51 - 103+88, LT
 STA. 103+75 - 104+75, RT
 STA. 104+28 - 104+71, LT
 STA. 1+58 - 2+28, RT

CAST-IN-PLACE CONCRETE CURB, TYPE B
 STA. 100+94 - 101+17, RT

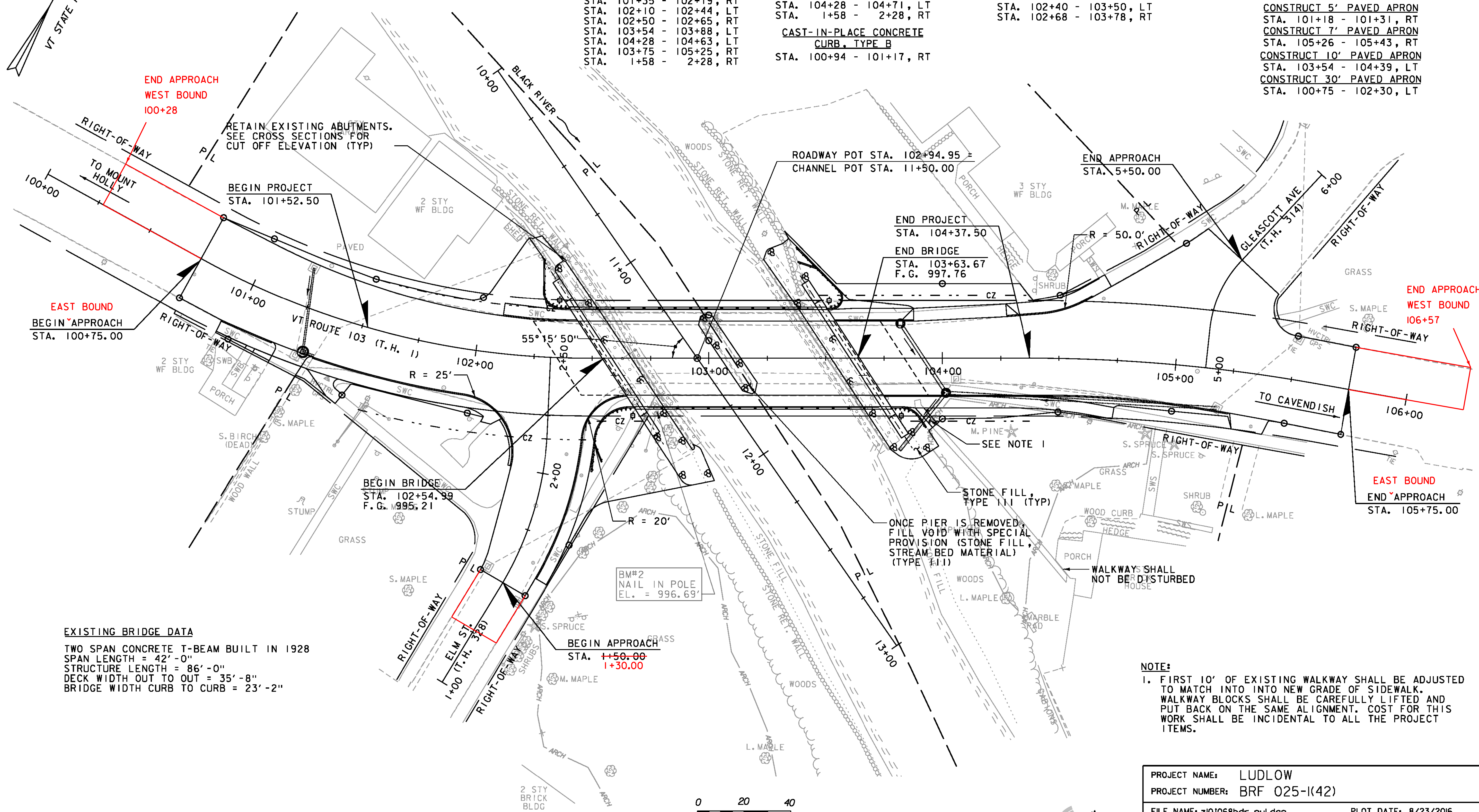
SPECIAL PROVISION (GUARDRAIL APPROACH SECTION, GALVANIZED 2 RAIL BOX BEAM) (COATED BLACK)
 STA. 102+27 - 102+40, LT
 STA. 2+04 - 2+30 (102+68), RT
 STA. 103+50 - 103+38, LT
 STA. 103+78 - 103+93, RT

SPECIAL PROVISION (BRIDGE RAILING, GALVANIZED STEEL TUBING/CONCRETE COMBINATION) (COATED BLACK)
 STA. 102+40 - 103+50, LT
 STA. 102+68 - 103+78, RT

REMOVAL AND DISPOSAL OF GUARDRAIL
 STA. 102+40 - 102+56, LT
 STA. 102+66 - 102+77, RT
 STA. 103+40 - 103+52, LT
 STA. 103+63 - 104+79, RT

COLD PLANING, BITUMINOUS PAVEMENT
 STA. 100+75 - 101+15, LT & RT
 STA. 1+50 - 2+00, LT & RT (ELM ST.)
 STA. 5+00 - 5+50, LT & RT (GLEASCOTT AVE)
 STA. 104+75 - 105+75, LT & RT

CONSTRUCT 5' PAVED APRON
 STA. 101+18 - 101+31, RT
CONSTRUCT 7' PAVED APRON
 STA. 105+26 - 105+43, RT
CONSTRUCT 10' PAVED APRON
 STA. 103+54 - 104+39, LT
CONSTRUCT 30' PAVED APRON
 STA. 100+75 - 102+30, LT



END APPROACH WEST BOUND 100+28

EAST BOUND BEGIN APPROACH STA. 100+75.00

ROADWAY POT STA. 102+94.95
 CHANNEL POT STA. 11+50.00

END APPROACH STA. 5+50.00

END PROJECT STA. 104+37.50
 END BRIDGE STA. 103+63.67
 F.G. 997.76

END APPROACH WEST BOUND 106+57

EAST BOUND END APPROACH STA. 105+75.00

BEGIN BRIDGE STA. 102+54.99
 F.G. 995.21

BEGIN APPROACH STA. 1+50.00
 1+30.00

BM#2 NAIL IN POLE EL. = 996.69'

STONE FILL, TYPE III (TYP)
 ONCE PIER IS REMOVED, FILL VOID WITH SPECIAL PROVISION (STONE FILL, STREAM BED MATERIAL) (TYPE III)

WALKWAYS SHALL NOT BE DISTURBED

EXISTING BRIDGE DATA
 TWO SPAN CONCRETE T-BEAM BUILT IN 1928
 SPAN LENGTH = 42'-0"
 STRUCTURE LENGTH = 86'-0"
 DECK WIDTH OUT TO OUT = 35'-8"
 BRIDGE WIDTH CURB TO CURB = 23'-2"

NOTE:
 1. FIRST 10' OF EXISTING WALKWAY SHALL BE ADJUSTED TO MATCH INTO INTO NEW GRADE OF SIDEWALK. WALKWAY BLOCKS SHALL BE CAREFULLY LIFTED AND PUT BACK ON THE SAME ALIGNMENT. COST FOR THIS WORK SHALL BE INCIDENTAL TO ALL THE PROJECT ITEMS.

PROJECT NAME: LUDLOW	PLOT DATE: 8/23/2016
PROJECT NUMBER: BRF 025-1(42)	DRAWN BY: E.F. LAWES
FILE NAME: z10j068bdr_nul.dgn	CHECKED BY: A.P. GUYETTE
PROJECT LEADER: A.P. GUYETTE	SHEET 14 OF 73
DESIGNED BY: E.F. LAWES	
LAYOUT SHEET	