

GPS CONTROL POINTS

VCTRL #100

U 61 1980  
 NORTH = 324010.8480  
 EAST = 1597887.2000  
 ELEV. = 960.5460

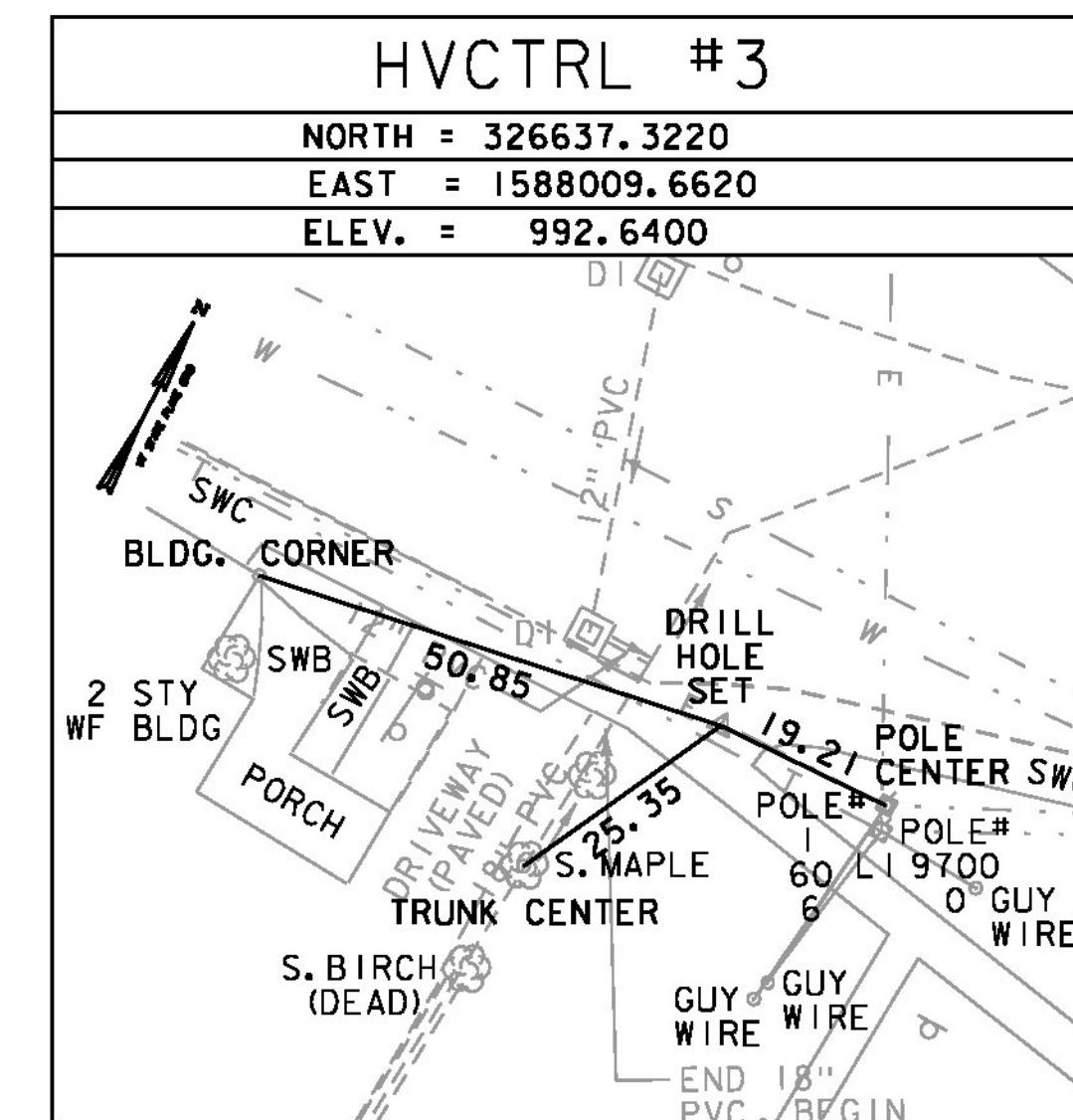
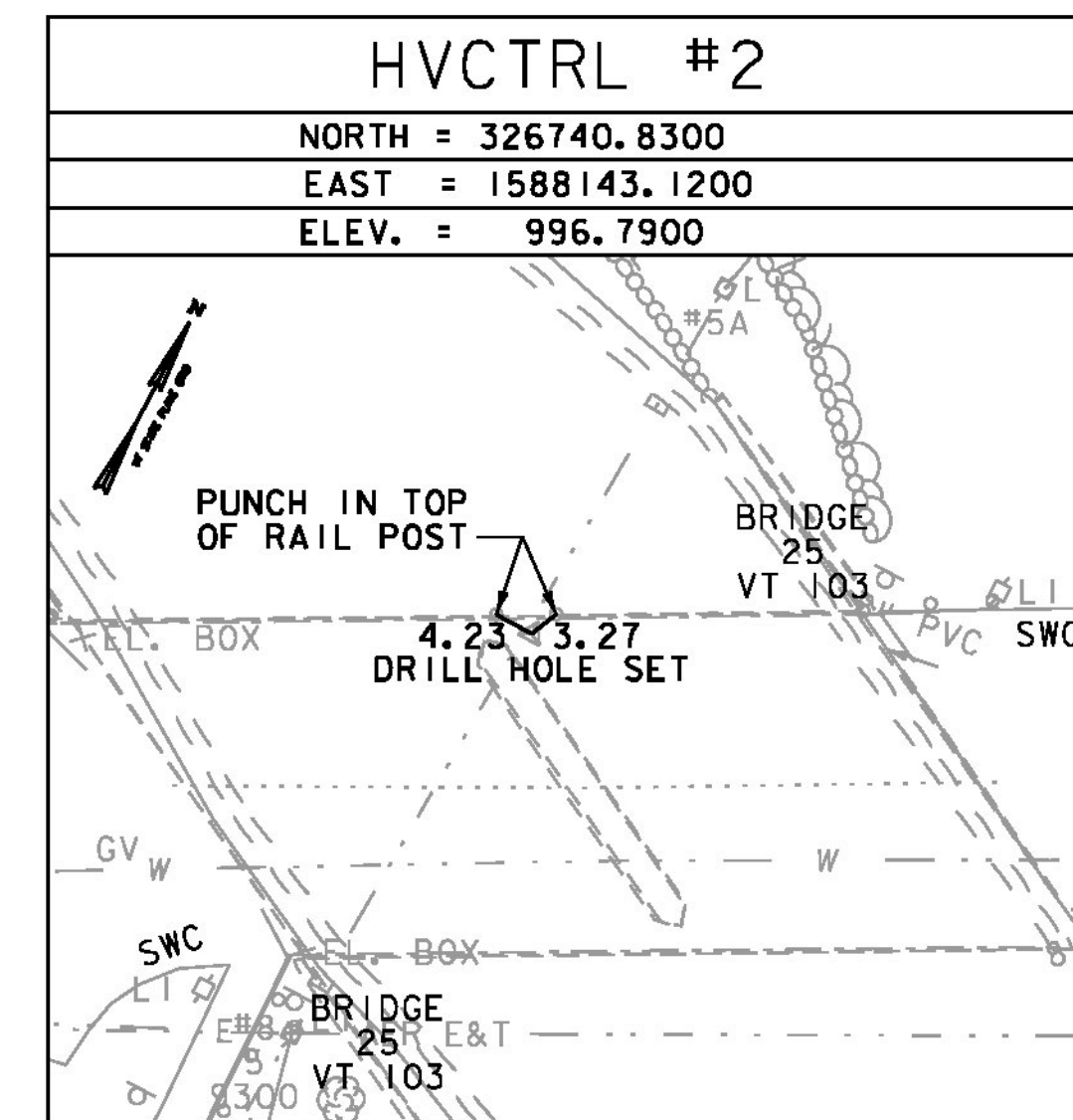
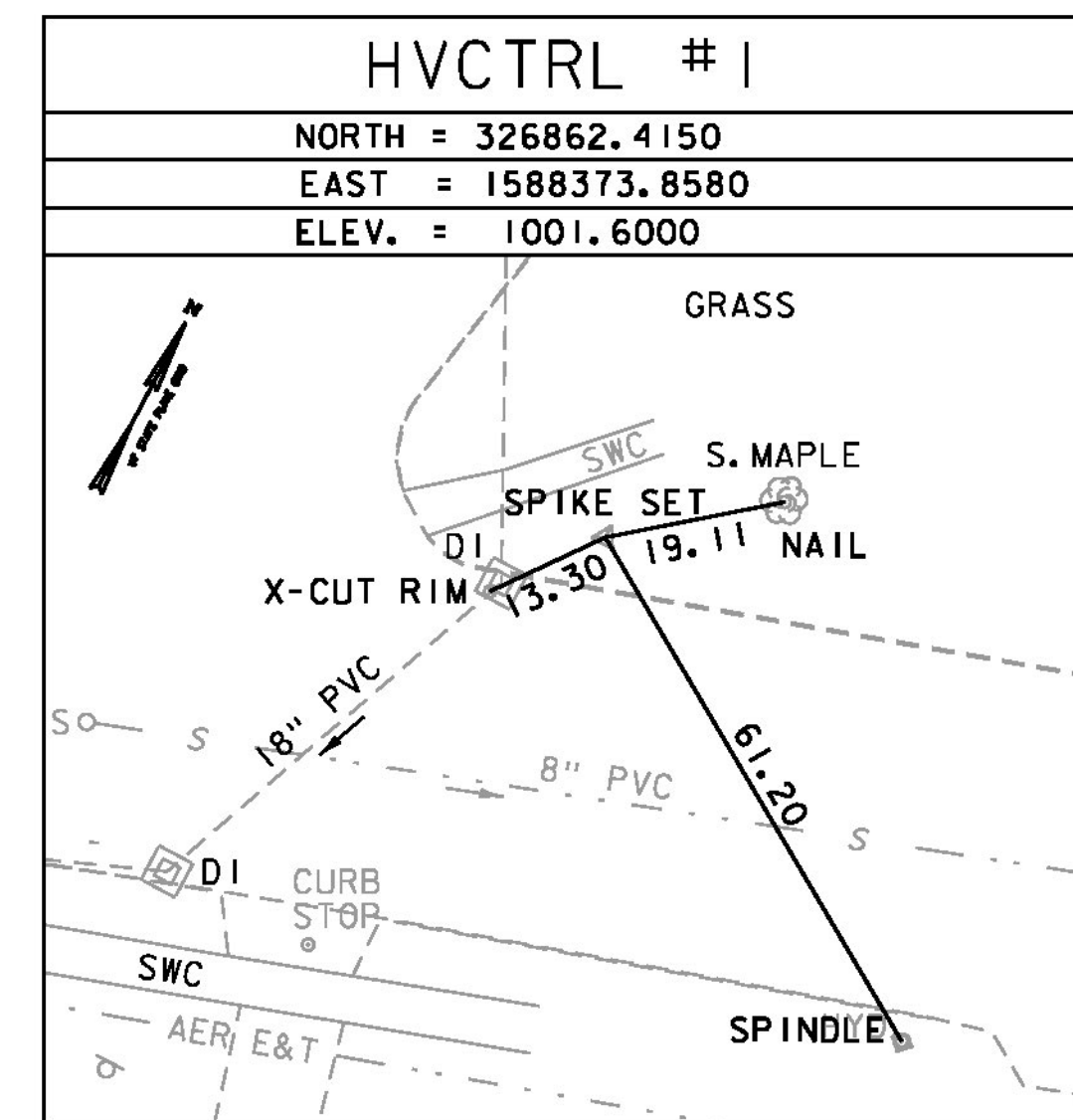
GENERAL LOCATION LUDLOW, VT. MARK IS LOCATED 2.4 MI (3.9 KM) EAST ALONG VT ROUTE 103 FROM THE POST OFFICE IN LUDLOW, SET NORTH OF THE HIGHWAY ON THE SOUTH SIDE OF AN OUTCROP OF BEDROCK IN A FIELD JUST WEST OF A WHITE WOOD FRAMED HOUSE, 161 FT (49 M) WEST OF THE NORTHWEST CORNER OF THE HOUSE, 141 FT (43 M) NORTH OF THE CENTER LINE OF THE HIGHWAY, 21 FT (6.4 M) EAST OF THE WEST END OF THE ROCK OUTCROP. THE MARK IS 5.91 FT (1.80 M) NORTHWEST FROM A WITNESS POST. THE MARK IS 2.56 FT (0.78 M) ABOVE GROUND.

HVCTRL #101

BRIGADE AZ MK 2006  
 NORTH = 326083.6150  
 EAST = 1591965.7870  
 ELEV. = 971.7550

GENERAL LOCATION LUDLOW, VT. THE MARK IS LOCATED 1 MILE EAST OF VT ROUTE 100 (ANDOVER ST). IT IS SET 0.10 FT (3 CM) BELOW GROUND SURFACE IN THE TOP OF A 1.0 FT (30 CM) DIAMETER CONCRETE MONUMENT, JUST EAST OF BROOKHAVEN RESORT. IT IS 23.3 FT (7.1 M) SOUTHWEST OF AND ABOUT 1.0 FT (0.3 M) LOWER THAN THE CENTERLINE OF VT ROUTE 103 (MAIN ST), 70.5 FT (21.5 M) SE OF POLE NO 7/24, 48.9 FT (14.9 M) NW OF POLE NO 7/25, 46.3 FT (14.1 M) EAST OF A 1.5 INCH DIAMETER IRON PIPE WHICH PROJECTS 1.6 FT (0.5 M) ABOVE GROUND SURFACE, AND 86.0 FT (26.2 M) ENE OF THE NE CORNER OF A WOODEN FENCE ENCLOSURE FOR A TENNIS COURT.

TRAVERSE TIES



• Main Traverse Completed 11/29/10 by T.J.Gaudet and B.M.Klinefelter

DATUM	
VERTICAL	NAVD 88
HORIZONTAL	NAD 83 (07)

PROJECT NAME: LUDLOW	
PROJECT NUMBER: BRF 025-(142)	
FILE NAME: z10J068t1.dgn	PLOT DATE: 8/23/2016
PROJECT LEADER: A.P. GUYETTE	DRAWN BY: B.M. KLINEFELTER
DESIGNED BY: B.M. KLINEFELTER	CHECKED BY: A.P. GUYETTE
TIE SHEET	SHEET 12 OF 73

