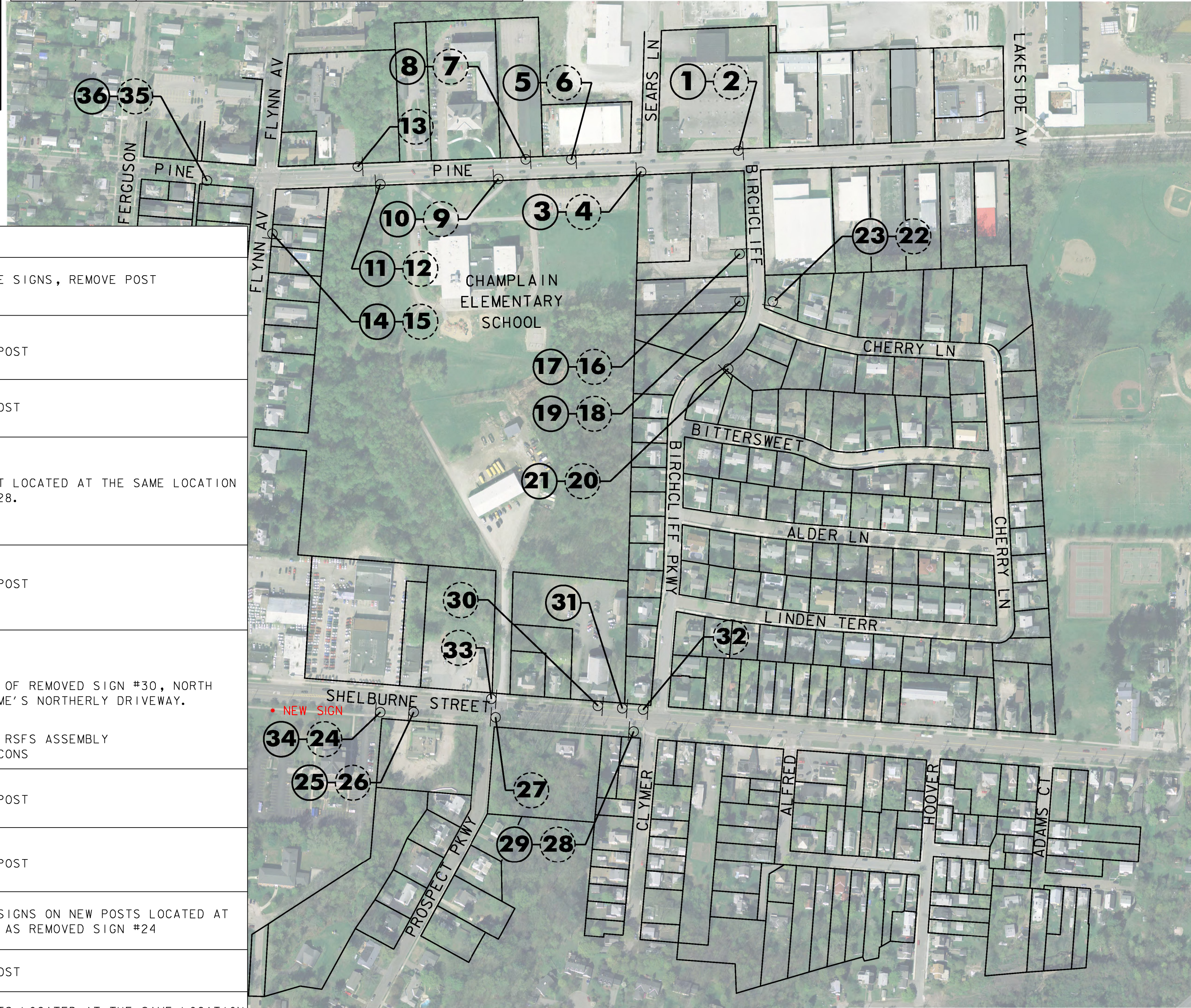


SIGN NUMBER	SIGN LEGEND	SIGN ACTIVITY	COMMENTS
1		N	NEW SIGNS AND POSTS IN SAME LOCATION AS REMOVED SIGN #2.
2		R	REMOVE SIGNS AND POST. CONTRACTOR TO DELIVER "NO PARKING" AND "BUS STOP" SIGNS TO THE CITY, AND DISPOSE OF THE "SLOW SCHOOL ZONE" SIGN.
3		N	NEW SIGN AND POST IN SAME LOCATION AS REMOVED SIGN #4
4		R	REMOVE SIGN AND POST

SIGN NUMBER	SIGN LEGEND	SIGN ACTIVITY	COMMENTS
5		N	NEW SIGN ON EXISTING POST WITH NEW FLASHING BEACONS AT SAME LOCATION AS REMOVED SIGN #6.
6		R	REMOVE SIGN AND FLASHING BEACONS. RETAIN POST.
7		R	REMOVE SIGNS AND POST. CONTRACTOR TO DELIVER "BUS STOP" SIGN TO THE CITY, AND DISPOSE OF THE PEDESTRIAN CROSSING SIGN.

SIGN NUMBER	SIGN LEGEND	MUTCD SIGN ID	COMMENTS
8		N	NEW SIGNS AND POSTS LOCATED 15' SOUTH OF REMOVED SIGN #7.
9		R	REMOVE SIGNS AND POST. CONTRACTOR TO DELIVER "NO PARKING" SIGN TO THE CITY.
10		N	NEW SIGNS AND POSTS IN SAME LOCATION AS REMOVED SIGN #9.
11		N	NEW SIGN ON EXISTING UTILITY POLE WITH NEW FLASHING BEACONS IN THE SAME LOCATION AS REMOVED SIGN #12
12		R	REMOVE SIGN AND FLASHING BEACONS. RETAIN POLE MOUNT.
13		RET	RETAIN SIGNS AND POST
14		N	NEW SIGNS AND POSTS IN SAME LOCATION AS REMOVED SIGN #15.
15		R	REMOVE SIGNS AND POST
16		R	REMOVE SIGNS AND POST
17		N	NEW SIGNS AND POSTS LOCATED AT THE SAME LOCATION AS REMOVED SIGN #16.
18		R	REMOVE SIGN AND POST
19		N	NEW SIGNS AND POSTS LOCATED AT THE SAME LOCATION AS REMOVED SIGN #18.
20		R	REMOVE SIGNS AND POST
21		N	NEW SIGNS AND POSTS LOCATED AT THE SAME LOCATION AS REMOVED SIGN #20.
22		R	REMOVE SIGNS AND POST
23		N	NEW SIGNS AND POSTS LOCATED AT THE SAME LOCATION AS REMOVED SIGN #22.
24		R	REMOVE SIGNS AND POST
25		N	NEW SIGNS AND POST LOCATED AT THE SAME LOCATION AS REMOVED SIGN #26.
		N	NEW SOLAR-POWERED RSFS ASSEMBLY WITH FLASHING BEACONS

SIGN NUMBER	SIGN LEGEND	SIGN ACTIVITY	COMMENTS
26		R&S	REMOVE AND SALVAGE SIGNS, REMOVE POST
27		RET	RETAIN SIGNS AND POST
28		R	REMOVE SIGN AND POST
29		N	NEW SIGNS AND POST LOCATED AT THE SAME LOCATION AS REMOVED SIGN #28.
		N	
30		R	REMOVE SIGNS AND POST
		R	
31		N	LOCATED 70' NORTH OF REMOVED SIGN #30, NORTH OF THE FUNERAL HOME'S NORTHERLY DRIVEWAY.
		N	NEW SOLAR-POWERED RSFS ASSEMBLY WITH FLASHING BEACONS
32		RET	RETAIN SIGNS AND POST
33		RET	RETAIN SIGNS AND POST
34		S	INSTALL SALVAGED SIGNS ON NEW POSTS LOCATED AT THE SAME LOCATION AS REMOVED SIGN #24
35		R	REMOVE SIGN AND POST
36		N	NEW SIGNS AND POSTS LOCATED AT THE SAME LOCATION AS REMOVED SIGN #35



ITEM 675.50 REMOVING SIGNS AS SHOWN - 29 15  
 ITEM 675.60 FRECTING SALVAGED SIGNS AS SHOWN - 2 0

LEGEND

1	PROPOSED SIGN
2	EXISTING SIGN

NOTES:  
 1. ALL OTHER SIGNS NOT SHOWN ARE TO REMAIN.  
 2. SEE NOTES SHEET NDS-1 AND TRAFFIC SIGN SUMMARY SHEETS FOR ADDITIONAL INFORMATION.  
 3. ROW WIDTH OF PINE STREET AND FLYNN AVE IS 66'.  
 4. ROW WIDTH OF SHELBURNE STREET IS 99'.  
 5. ROW WIDTH OF BIRCHCLIFF PARKWAY IS 49.5'.  
 6. CLEAR ZONE ON SHELBURNE ST. IS 3 FEET BEHIND FACE OF CURB.

SIGN ACTIVITY

N	= NEW
R	= REMOVE
R&S	= REMOVE & SALVAGE
S	= SALVAGE SIGN
RET	= RETAIN
B-B	= BACK TO BACK



**BURLINGTON**

PROJECT NAME: STATEWIDE SRTS PROJECTS  
 PROJECT NUMBER: STP SRIN(25)

FILE NAME: ...Plotfiles\06 Champlain.dgn  
 PROJECT LEADER: G. GOYETTE  
 DESIGNED BY: K. RICHARDSON  
 BURLINGTON LS-2

PLOT DATE: 12/28/2012  
 DRAWN BY: K. RICHARDSON  
 CHECKED BY: G. GOYETTE  
 SHEET 6 OF 35

