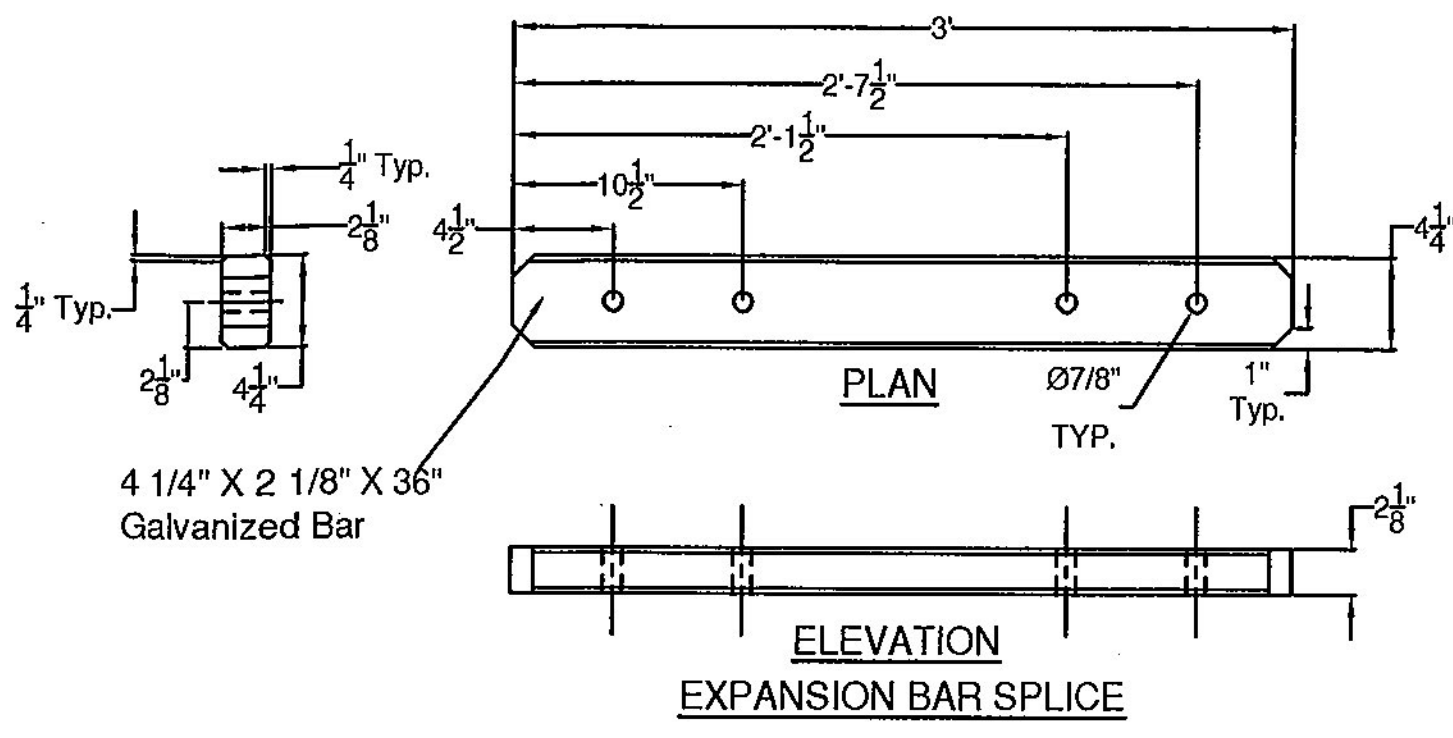
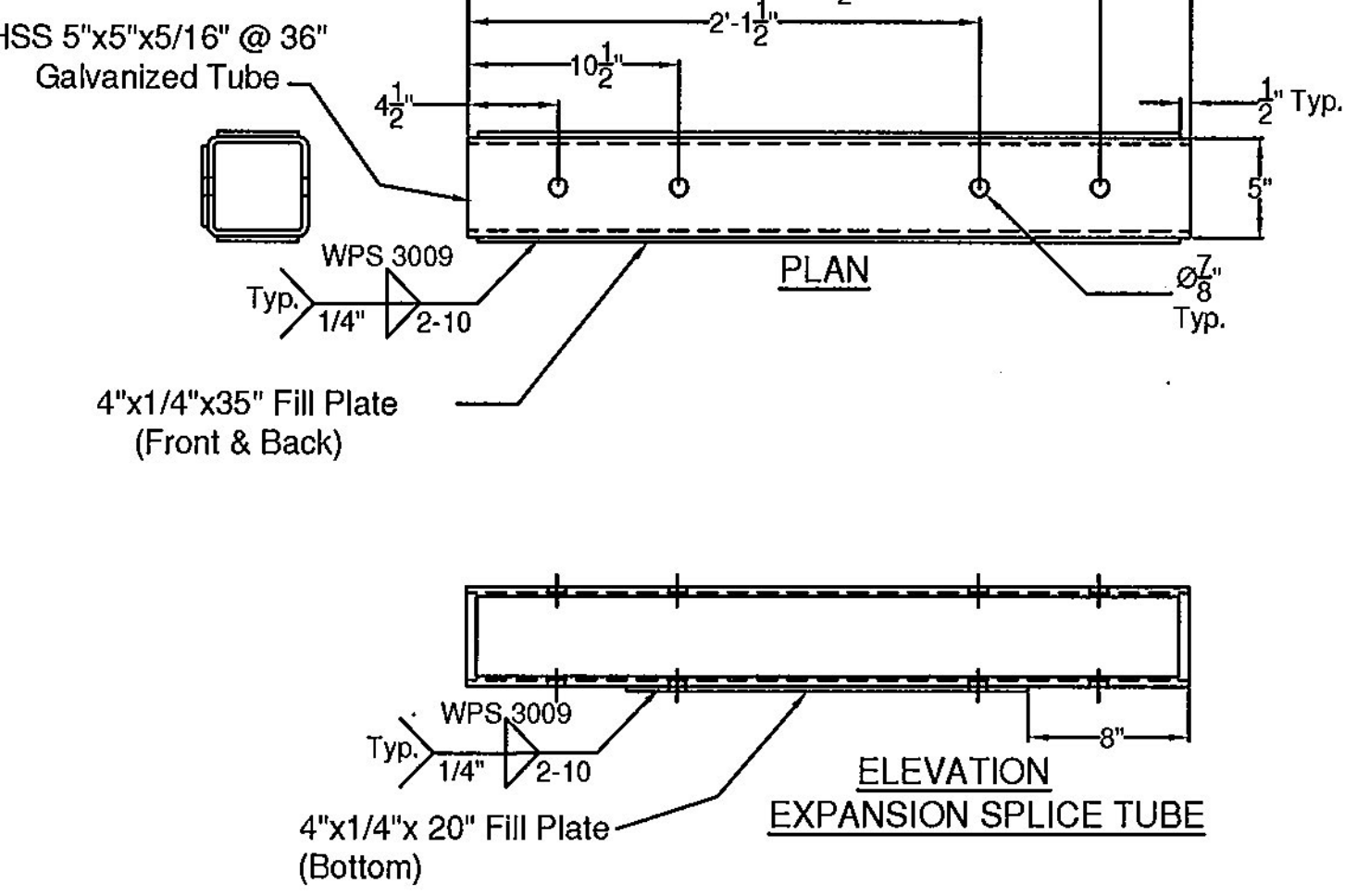
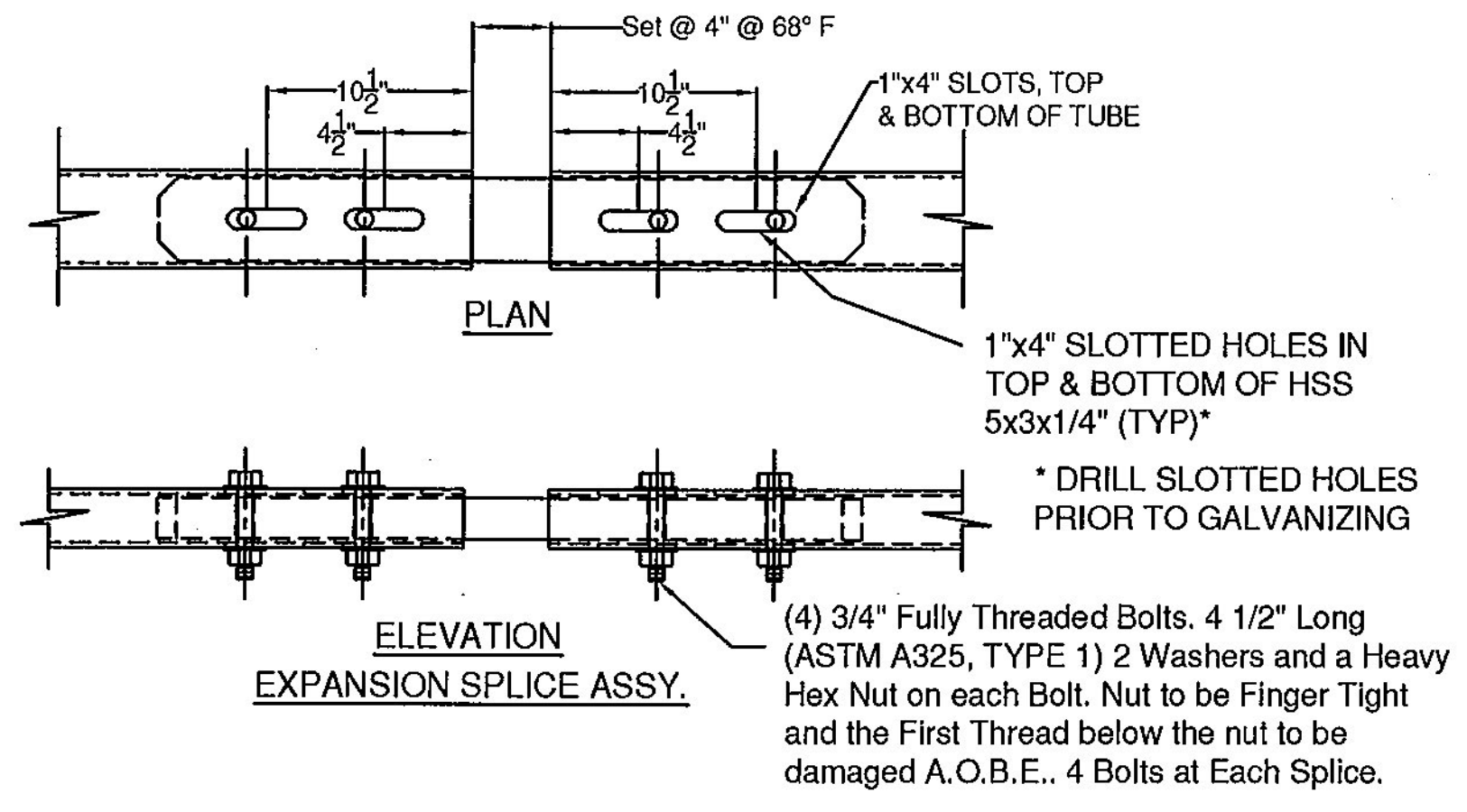


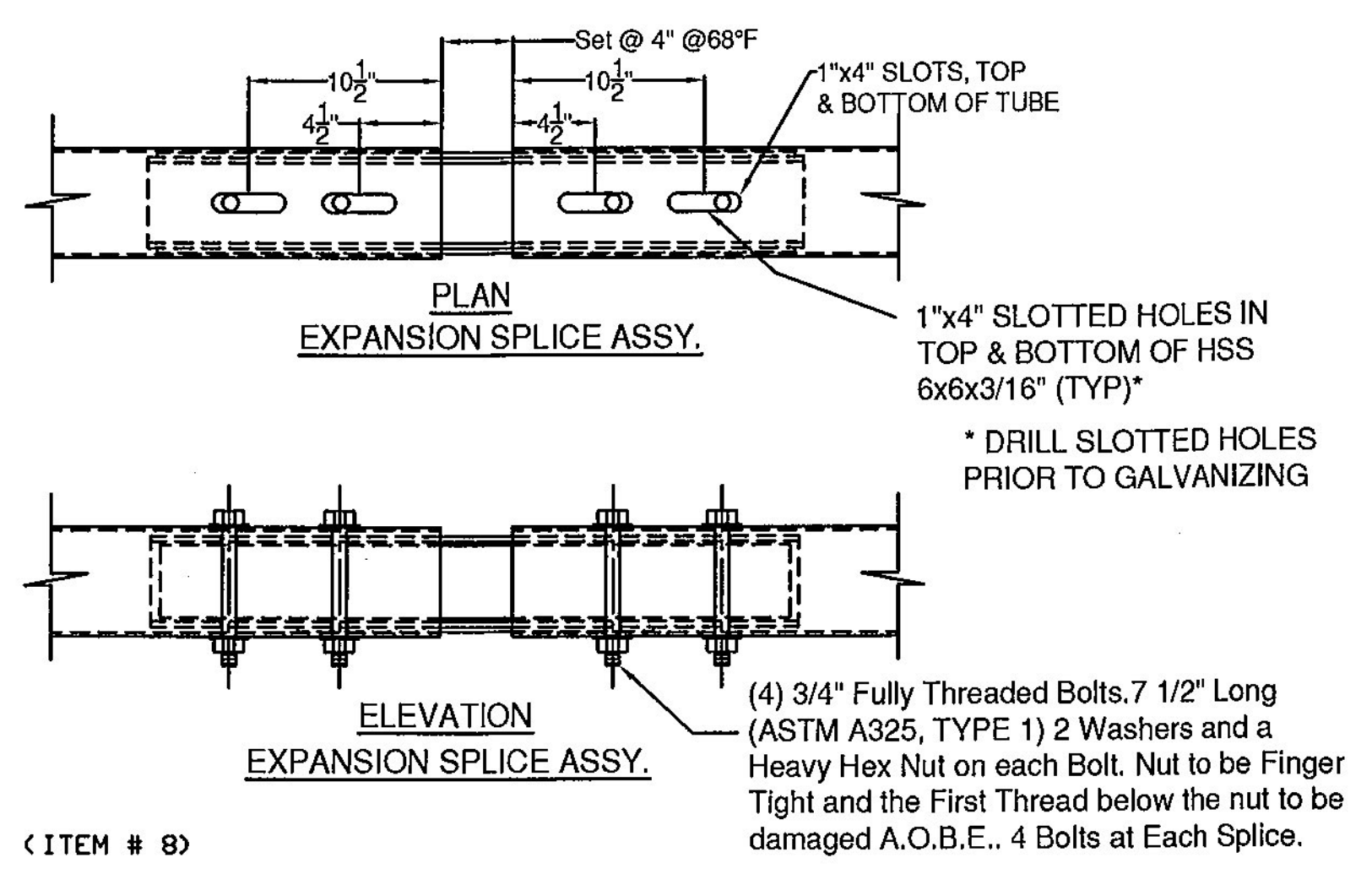
SPLICE BAR - EXPANSION



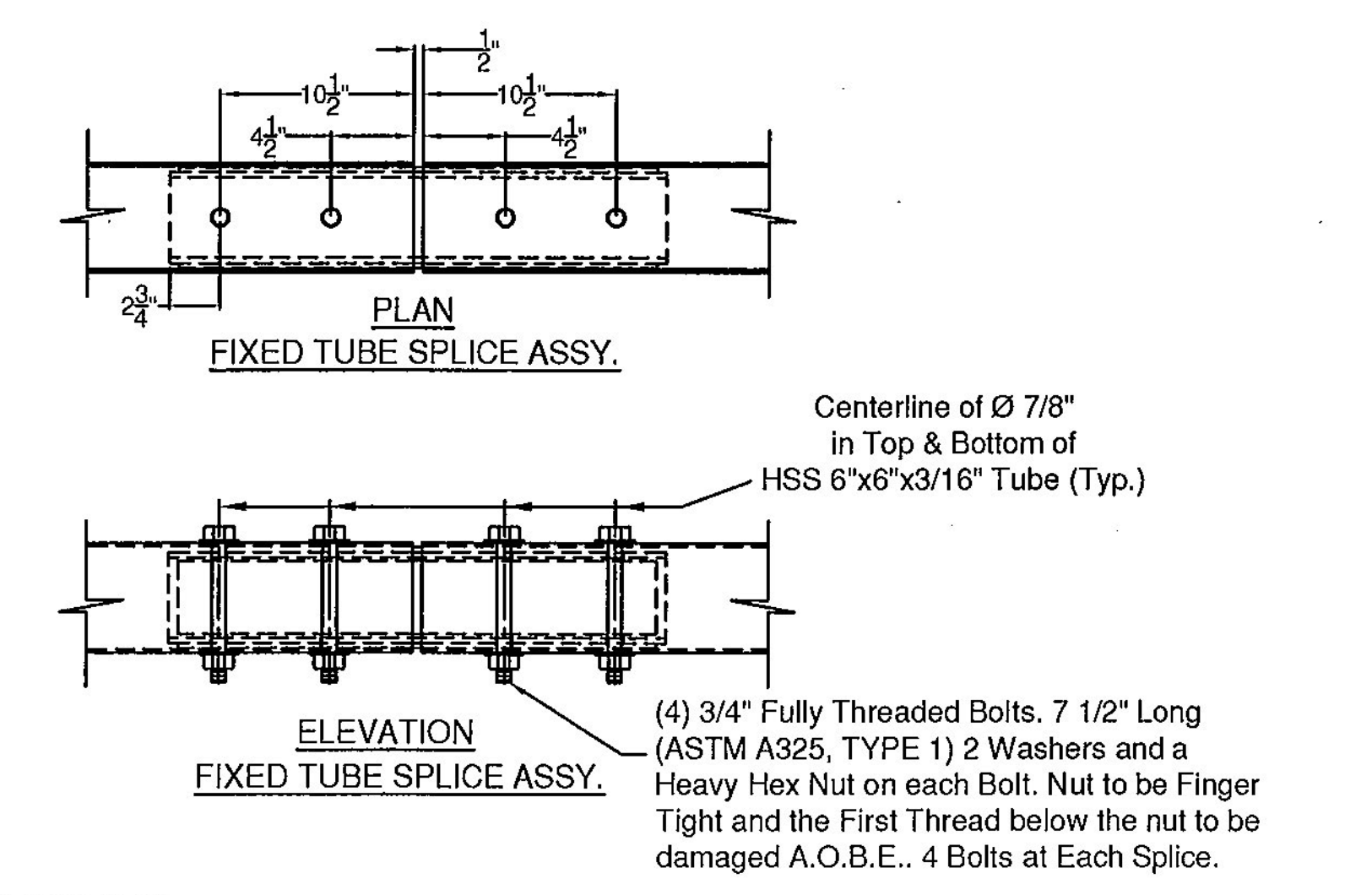
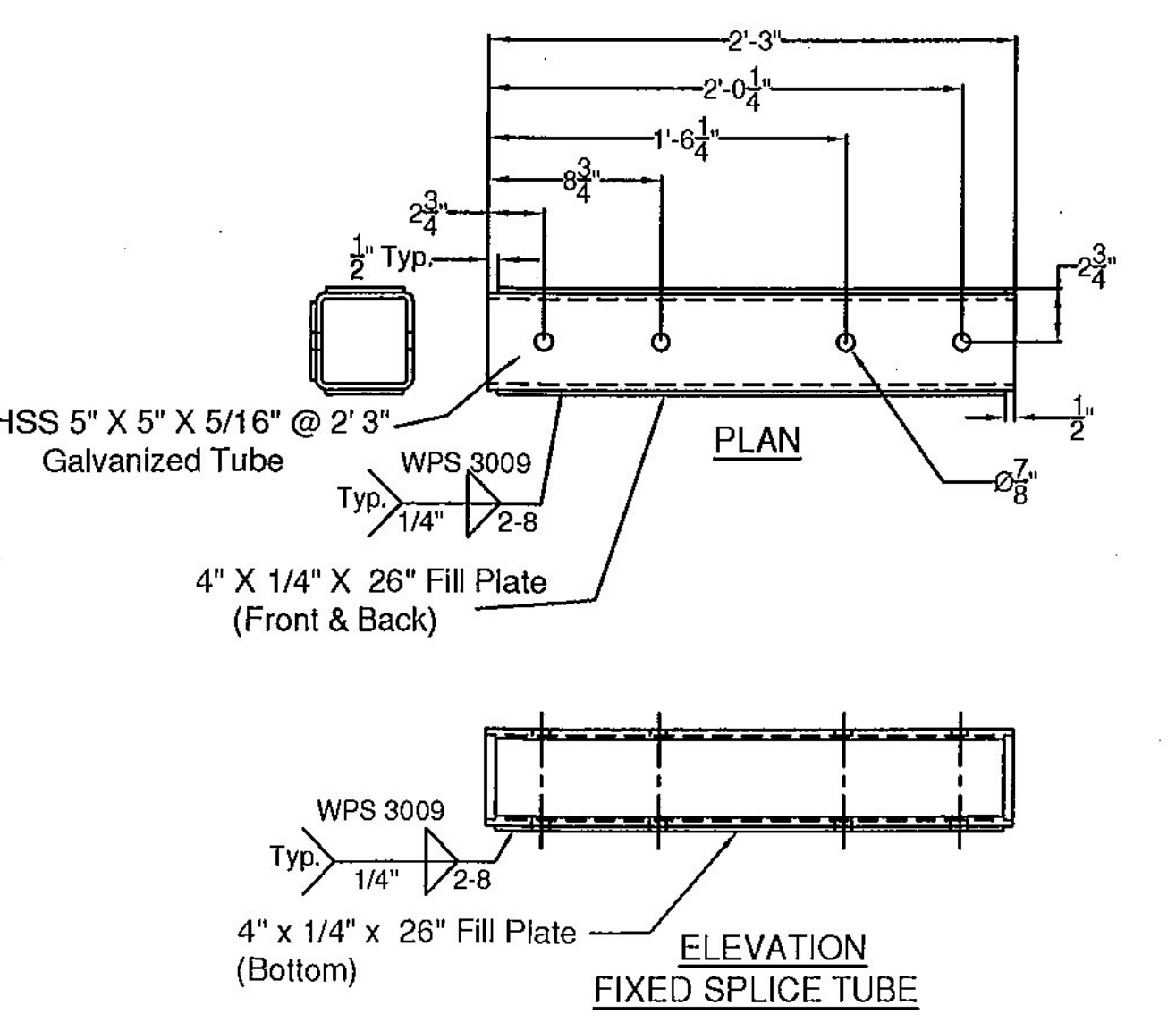
< ITEM # 9 >



SPLICE TUBE - EXPANSION



< ITEM # 8 >



< ITEM # 7 >

SPLICE TUBE - FIXED

Vermont Agency of Transportation
RECEIVED
 ON: January 7, 2016
 and Checked for
CONFORMANCE
 BY: Rob Young DATE: 01/14/2016

APPROVED: Approval of drawings and/or procedures indicates concurrence with the information presented and does not relieve the Contractor or Fabricator of compliance with all specifications and code requirements.	X	
APPROVED AS NOTED		
REVISE AND RESUBMIT		
NOT REVIEWED		
Date: 1/13/16		
By: <i>John E. Miller</i>		
<small>This review by Stantec Consulting Services Inc. is for the sole purpose of ascertaining conformance with the general design concept. This review shall not mean that Stantec Consulting Services Inc. approves the detail design inherent in the shop drawings, responsibility for which shall remain with the Contractor. Submitting same, and such review shall not relieve the Contractor of his responsibility for errors or omissions in the shop drawing or of his responsibility for meeting all requirements of the Contract Documents. The contractor is responsible for dimensions to be confirmed and controlled at the job site, for information that pertains solely to the fabrication processes or to techniques of construction and installation and for coordination of the work of all subcontractors.</small>		

ITEM #: 621.725
 STRUCTURAL STEEL TO COMPLY W/ ASTM A6
 TOLERANCE UNLESS OTHERWISE NOTED:
 FRACTIONS = ± 1/16"
 ANGLES = ± 1/2"
 DIAMETERS = ± 1/32"

SHEET 5 OF 5

GUARD RAIL TO BRIDGE RAIL TRANSITION DETAILS SHEET
 VERMONT ROUTE 106 (MAJOR COLLECTOR, RURAL), BRIDGE # 24
 TOWN OF WOODSTOCK, COUNTY OF WINDSOR, VT.

R NO.	DATE	DESCRIPTION	BY	R NO.	DATE	DESCRIPTION	BY
E 1	12/28/15	Revised Per 12/18/15 Markup	E.P.	E			

DRAWN	E.P.	11/30/15
CHECKED	D.L.	11/30/15
APPROVED		
SCALE	SCHMATIC	
DRAWING NO. F.R. LAFAYETTE-WOODSTOCK (21)		

ELDERLEE, INC.
 OAKS CORNERS, NEW YORK 14518
 email: dlong@elderlee.com / epeek@elderlee.com
 Tel: 315-789-6670 Fax: 315-789-6615

ORTHOGONOGRAPHIC PROJECTION