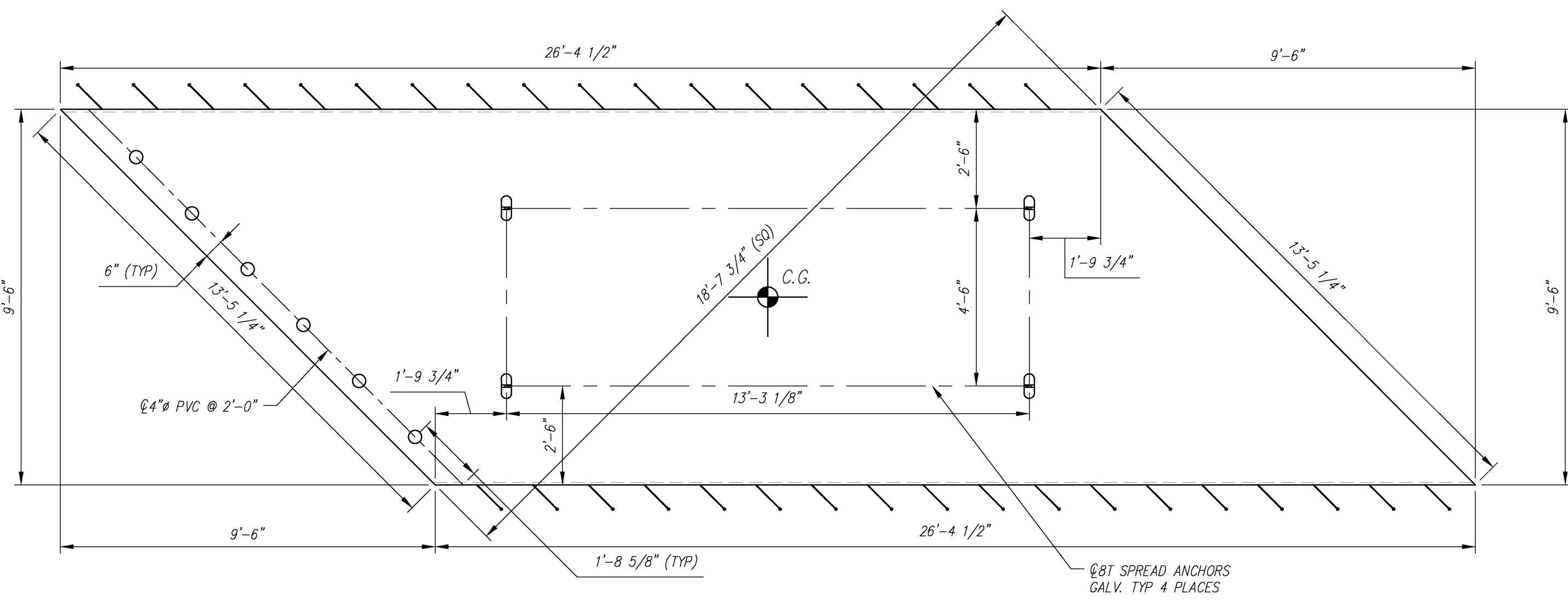
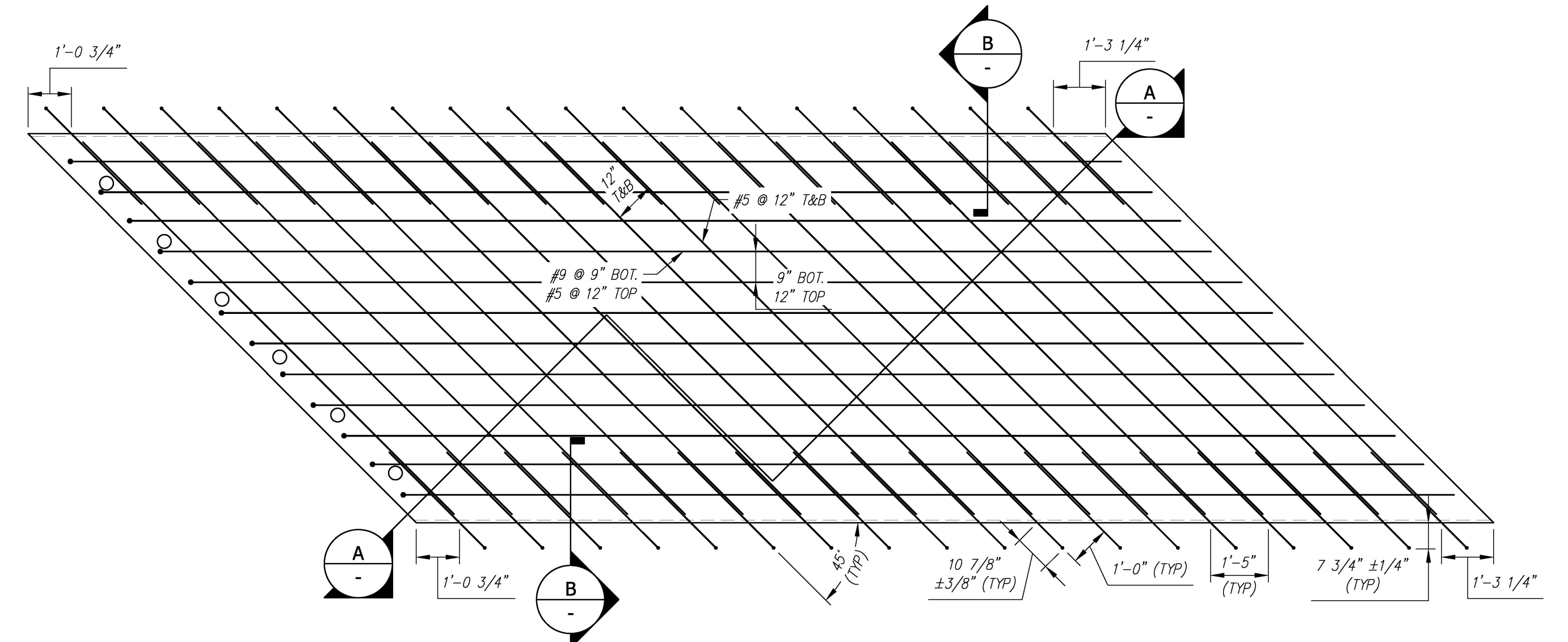


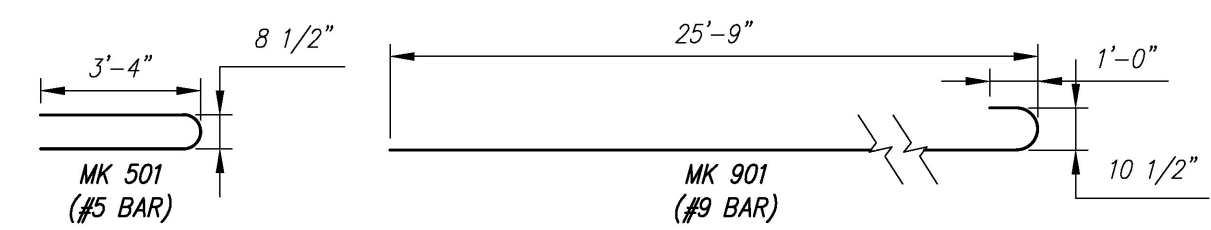
NOTES:
 1. ALL REINFORCING TO BE LEVEL I, EPOXY COATED.
 2. COVER TO REINFORCING: SEE DETAILS.



PLAN VIEW
 SCALE: 3/8" = 1'-0"



REINFORCING PLAN
 SCALE: 3/8" = 1'-0"



BENDING SCHEDULE
 SCALE: 1/4" = 1'-0"

Stantec

REVIEWED: [X] REVIEWED AND RESUBMITTED: [] NOT REVIEWED: []

Date: _____

Signature: *John E. [unclear]*

This review by Stantec Consulting Services Inc. is for the sole purpose of ascertaining compliance with the general design intent. This review shall not constitute a professional engineering review and shall not be relied upon for any legal or regulatory purposes. The contractor is responsible for the design and construction of the project. The contractor shall be responsible for meeting the requirements of the Contract Documents. The contractor shall be responsible for obtaining all necessary permits and for the safety of the project. The contractor shall be responsible for the safety of the project and for the safety of the project.

Vermont Agency of Transportation
RECEIVED
 ON: April 27, 2016
 and Checked for
CONFORMANCE
 BY: Rob Young DATE: 04/28/2016

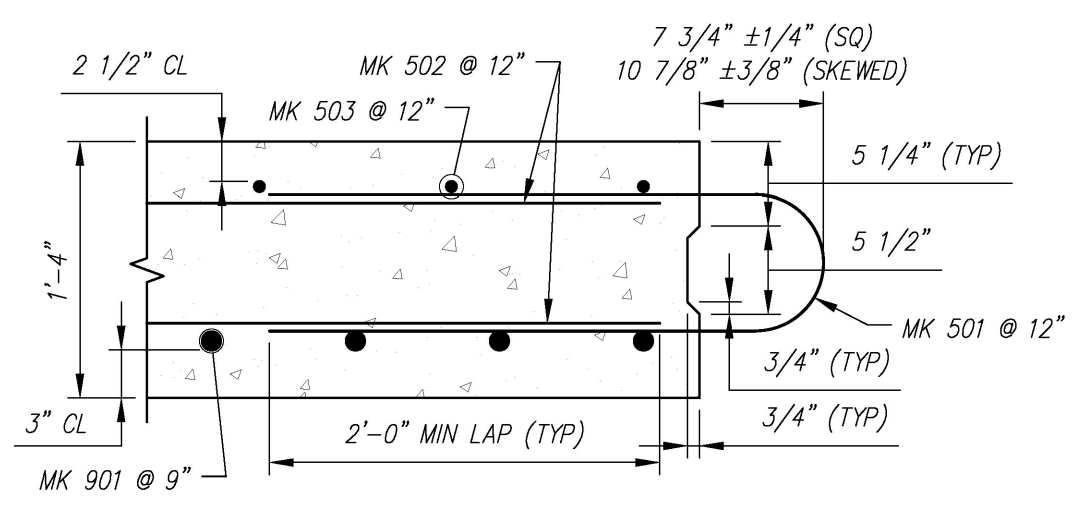
ASS - BILL OF MATERIALS / EMBEDS

CSI ID#	DESCRIPTION	QTY	UM	COMMENTS
EM-00034	4" FOAM CORE PVC	8	FT	
EM-00039	SPREAD ANCHORS 8T GALV	4	EA	
RM-00016	REBAR #5 EPOXY-GR 60 40'	1029	LB	
RM-00090	REBAR #9 EPOXY-GR 60	1125	LB	
MK-FA5000SC30	MIX DESIGN - FLY ASH 5000 SELF COMPACTIN	12.37	CY	

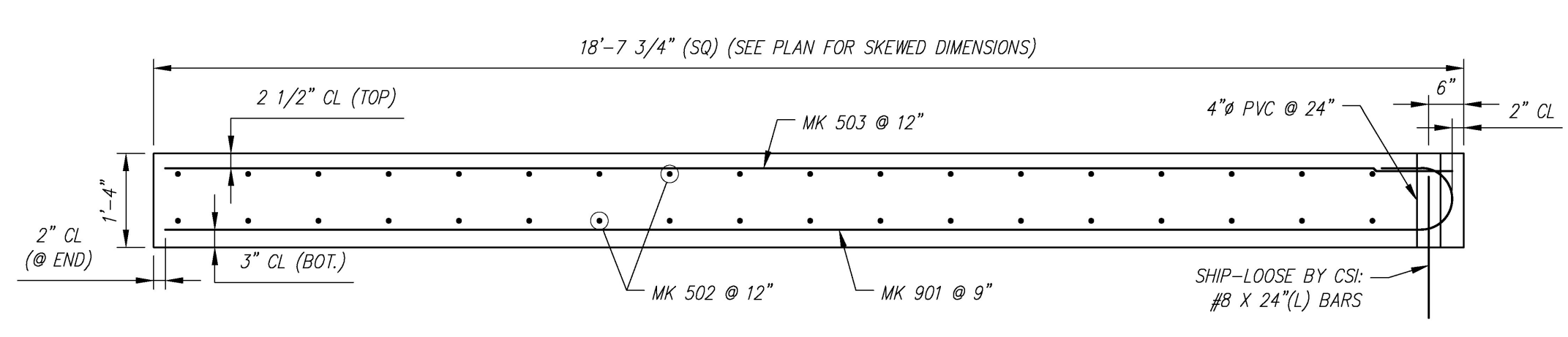
ALL REBAR TO BE EPOXY COATED

AS5 Rebar Schedule

MK	QTY	LENGTH
501 #5	36	7' - 4"
502 #5	36	12' - 11"
503 #5	10	25' - 9"
901 #9	12	27' - 7"



SECTION B
 SCALE: 1" = 1'-0"



TYPICAL REINFORCING SECTION A-A
 SCALE: 1/2" = 1'-0"

Contractor is to verify that all information shown on drawings has been thoroughly checked, complies with the contract documents and is adequate to meet the field conditions. Some dimensions and details may differ slightly from contract drawings to accommodate the manufacturing or design process. Approval of this drawing indicates that any deviation from the contract documents has been reviewed and found to be acceptable. Production will not commence until receipt of signed, approved shop drawings.

This drawing contains information proprietary to CONCRETE SYSTEMS, INC. This drawing is disclosed with the understanding that it will be retained in confidence and its use limited solely to the purpose for which it is disclosed. It is understood that no reproduction of this drawing is authorized without permission from CONCRETE SYSTEMS, INC. and that it will be returned to CONCRETE SYSTEMS, INC. upon request.

Rev.	Date	DESCRIPTION	By
10			
9			
8			
7			
6			
5			
4			
3			
2			
1	04/15/2016	MK 901 BAR LENGTH	AK

This drawing is based upon information provided from the following documents and/or sources:

Engineer: STANTEC CONSULTING SERVICES, INC.
 Project No:
 Drawings: PROJECT PLANS

Specifications:
 Date

Other Sources:

Concrete Systems Inc.
 9 Commercial St., Hudson, NH, 03051
 Phone 603-889-4163
 Fax 603-889-2417

STATE AGENCY
VTrans
 Working to Get You There
 Drawn by: A. KOSTENKO
 Reviewed By: [unclear]
 Date: 04/04/2016

VTAOT PROJ. NO.: BRF 0151(21)

MILLER CONSTRUCTION, INC.
 ROUTE 106 BRIDGE REPLACEMENT T.H. 61 (KENDALL ROAD)
 WOODSTOCK, VT

SHOP DRAWING - AS5

Quantity: Project No: SHEET AS5 OF

PIECE QUANTITY: 1 EACH
 WEIGHT: 25.06 TONS