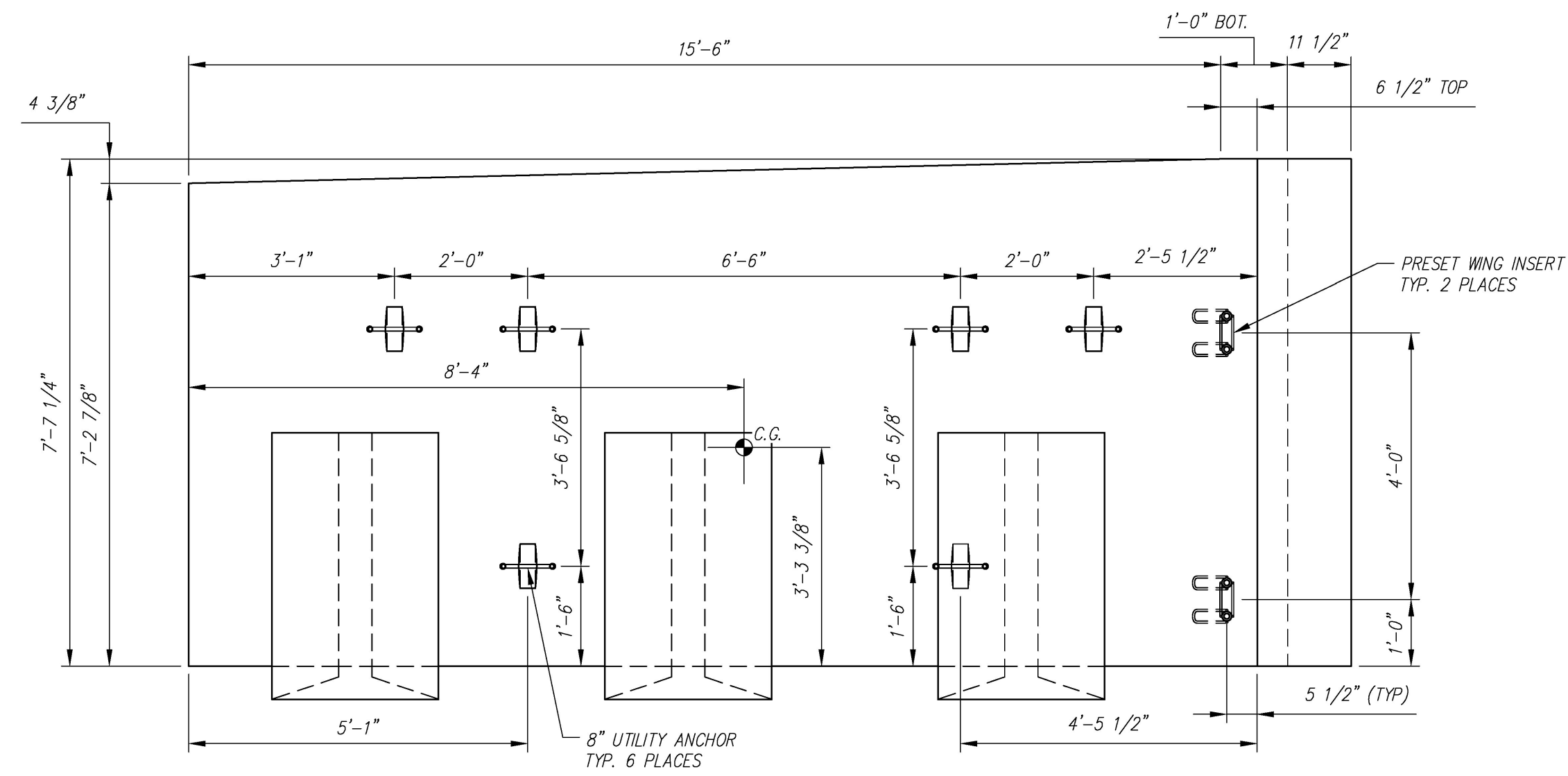
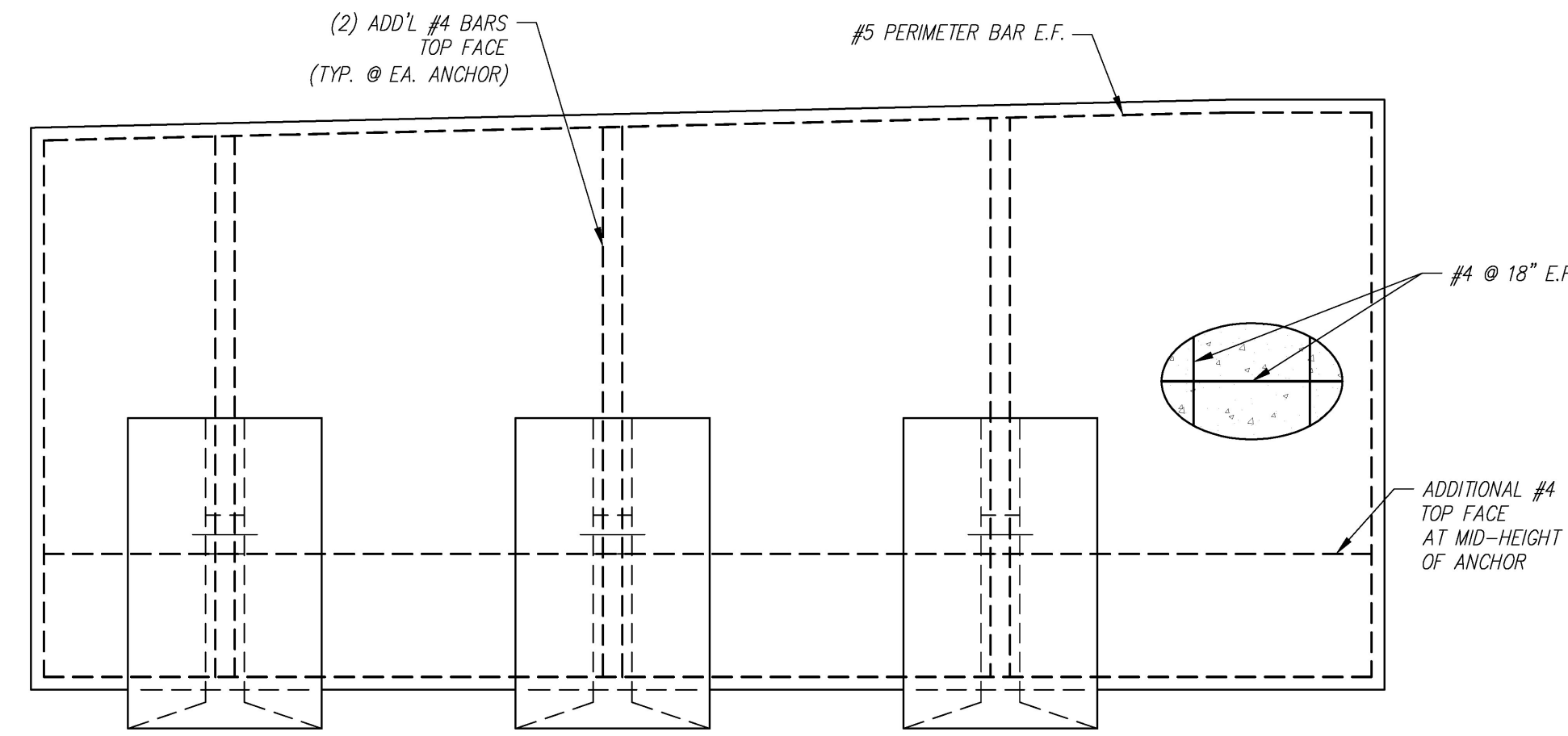


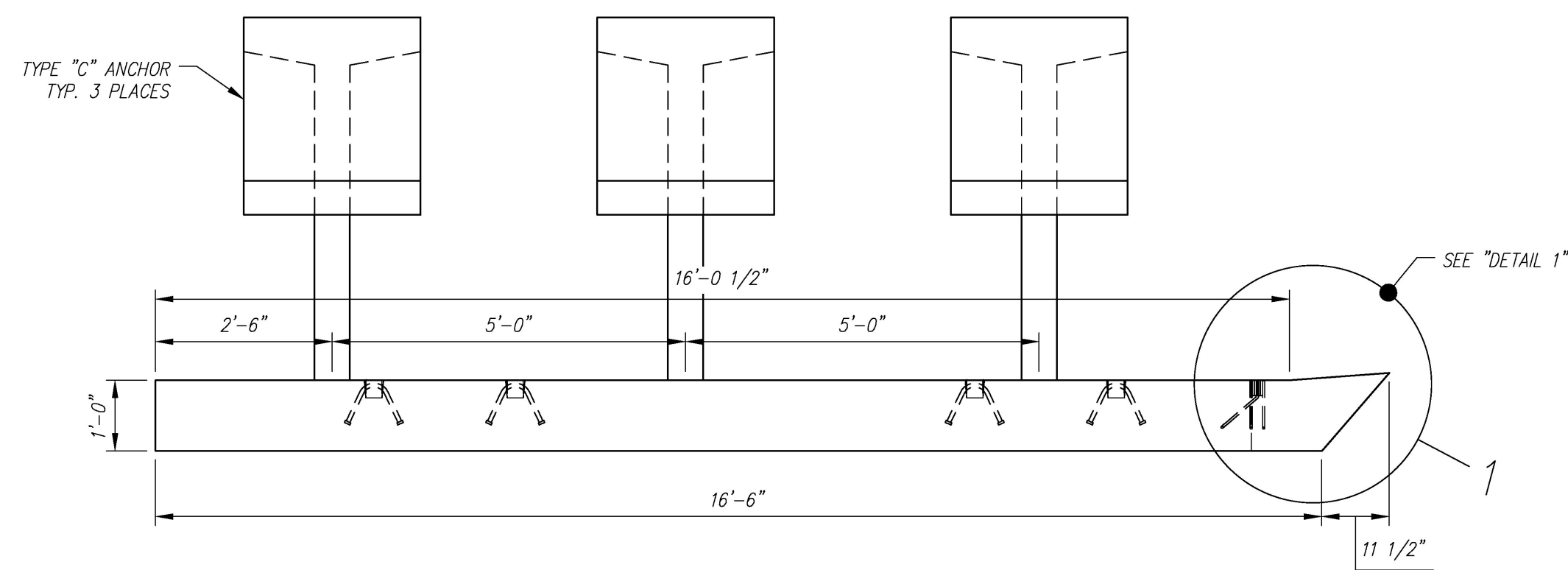
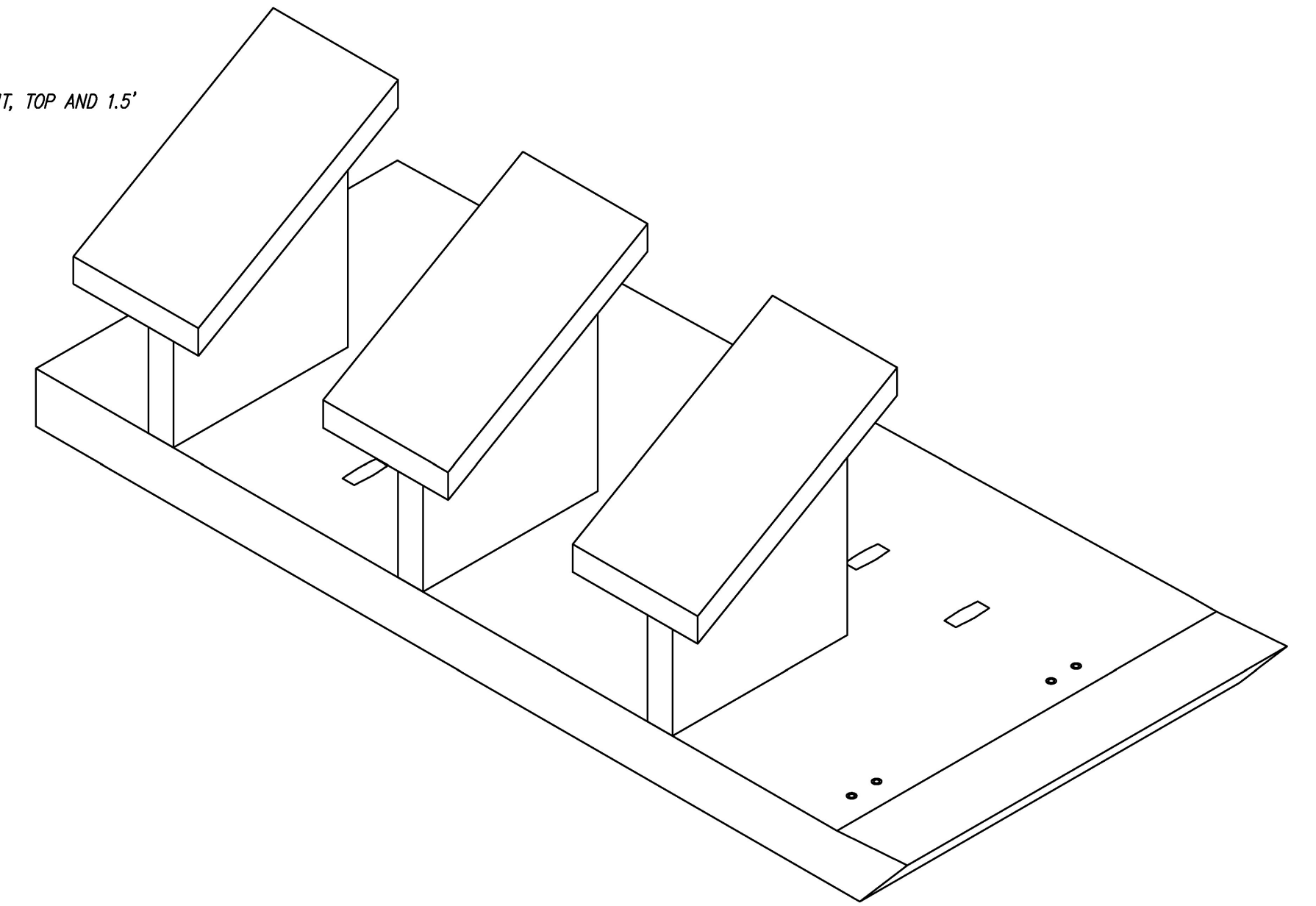
- NOTES:
1. ALL REINFORCING TO BE EPOXY COATED.
 2. ALL EXPOSED EDGES TO BE 1" CHAMFERED.
 3. COVER TO REINFORCING: 2" U.N.O.
 4. WATER REPELLANT COATING TO BE APPLIED ON FRONT, TOP AND 1.5' DOWN BACK FACE.



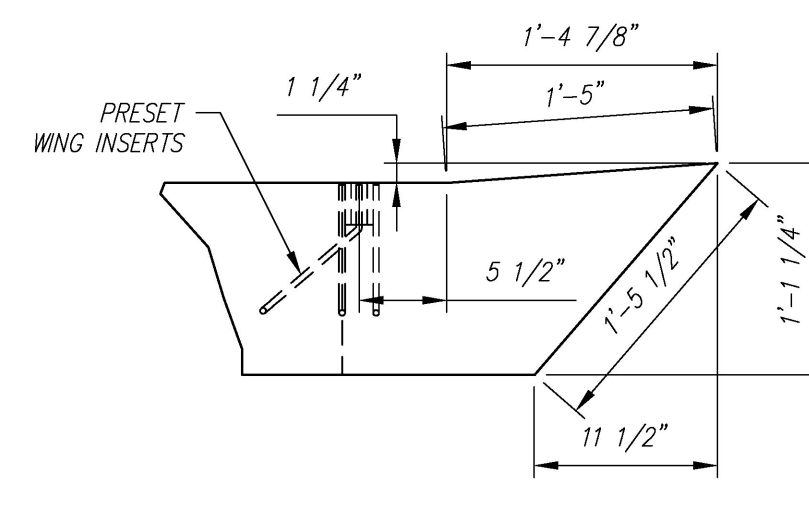
PLAN (CASTING POSITION)
SCALE: 1/2" = 1'-0"



REINFORCING PLAN
SCALE: 1/2" = 1'-0"



ELEVATION
SCALE: 1/2" = 1'-0"



DETAIL
SCALE: 1" = 1'-0"

REVIEWED:	X
REVIEWED, REVISIONS NOTED:	
REVISE AND RESUBMIT	
NOT REVIEWED	



Date: 4/27/16
Signature: *[Handwritten Signature]*

This review by Stantec Consulting Services Inc. is for the sole purpose of ascertaining conformance with the general design concept. This review shall not mean that Stantec Consulting Services Inc. approves the detail design inherent in the shop drawings, responsibility for which shall remain with the Contractor. Submitting same, and such review shall not relieve the Contractor of his responsibility for errors or omissions in the shop drawing or of his responsibility for meeting all requirements of the Contract Documents. The contractor is responsible for dimensions to be confirmed and correlated at the job site, for information that pertains solely to the fabrication processes or to techniques of construction and installation and for coordination of the work of all trades.

Vermont Agency of Transportation
RECEIVED
ON: April 27, 2016
and Checked for
CONFORMANCE
BY: Rob Young DATE: 04/28/2016

WW4 - BILL OF MATERIALS / EMBEDS				
CSI ID#	DESCRIPTION	QTY	UM	COMMENTS
DTJ	CERTI VEX PENSEAL 244 WATER REPELLANT	1	GA	
CSANC-C	CON/SPAN WINGWALL ANCHOR "C"	3	EA	
EM-0005	1" X 8" PRESET WING INSERTS	2	EA	
EM-00115	UTILITY ANCHOR #BUA671-GALVANIZED	6	EA	
RM-00014	REBAR #4 EPOXY-GR 60 40'	266	LB	
RM-00016	REBAR #5 EPOXY-GR 60 40'	101	LB	
MX-FA5000SC30	MIX DESIGN - FLY ASH 5000 SELF COMPACTIN	4.68	CY	

PIECE QUANTITY: 1 EACH
WEIGHT: 12.18 TONS

Contractor is to verify that all information shown on drawings has been thoroughly checked, complies with the contract documents and is adequate to meet the field conditions. Some dimensions and details may differ slightly from contract drawings to accommodate the manufacturing or design process. Approval of this drawing indicates that any deviation from the contract documents has been reviewed and found to be acceptable. Production will not commence until receipt of signed, approved shop drawings.

This drawing contains information proprietary to CONCRETE SYSTEMS, INC. This drawing is disclosed with the understanding that it will be retained in confidence and its use limited solely to the purpose for which it is disclosed. It is understood that no reproduction of this drawing is authorized without permission from CONCRETE SYSTEMS, INC. and that it will be returned to CONCRETE SYSTEMS, INC. upon request.

Rev.	Date	DESCRIPTION	By
10			
9			
8			
7			
6			
5			
4			
3			
2			
1			

This drawing is based upon information provided from the following documents and/or sources:
Engineer: STANTEC CONSULTING SERVICES, INC.
Project No:
Drawings: PROJECT PLANS
Specifications:
Other Sources:

CSI
Concrete Systems Inc.
9 Commercial St., Hudson, NH, 03051
Phone 603-889-4163
Fax 603-889-2417

STATE AGENCY
VTrans
Working to Get You There
Drawn by: A. KOSTENKO
Reviewed By:
Approved By:
Date: 04/04/2016

VTAOT PROJ. NO.: BRF 0151(21)	
MILLER CONSTRUCTION, INC. ROUTE 106 BRIDGE REPLACEMENT T.H. 61 (KENDALL ROAD) WOODSTOCK, VT	
D	SHOP DRAWING - WW4
Quantity: 1	Project No: R-S22624-WW4
REV 0	SHEET WW4 OF