

C2 - BILL OF MATERIALS / EMBEDS			
CSI ID#	DESCRIPTION	QTY	UM
SBO	B-16 COIL LOOP INSERTS	8	EA
DTJ	8TON ERECTION ANCHOR GALV QL149G	4	EA
DTJ	8TON PLATE ANCHOR GALV QL042G	4	EA
EM-00013	DBSAE #5 X 18" EPOXY	24	EA
EM-00015	DBSAE #6 X 18" EPOXY	320	EA
EM-00033	3" FOAM CORE PVC	7	FT
RM-00014	REBAR #4 EPOXY-GR 60 40'	153	LB
RM-00016	REBAR #5 EPOXY-GR 60 40'	1159	LB
RM-00010	REBAR #7 EPOXY-GR 60 40'	1553	LB
RM-00093	REBAR #10 EPOXY-GR 60	1549	LB
MX-FAS000SC30	MX DESIGN - FLY ASH 5000 SELF COMPACTING CONCRETE	10.88	CY
SHIP-LOOSE - BILL OF MATERIALS			
EM-00021	DI #5 X 18" EPOXY	24	EA
DTJ	DI #6 X 26" EPOXY	320	EA

REVIEWED: X

REVIEWED, REVISIONS NOTED:

REVISE AND RESUBMIT

NOT REVIEWED

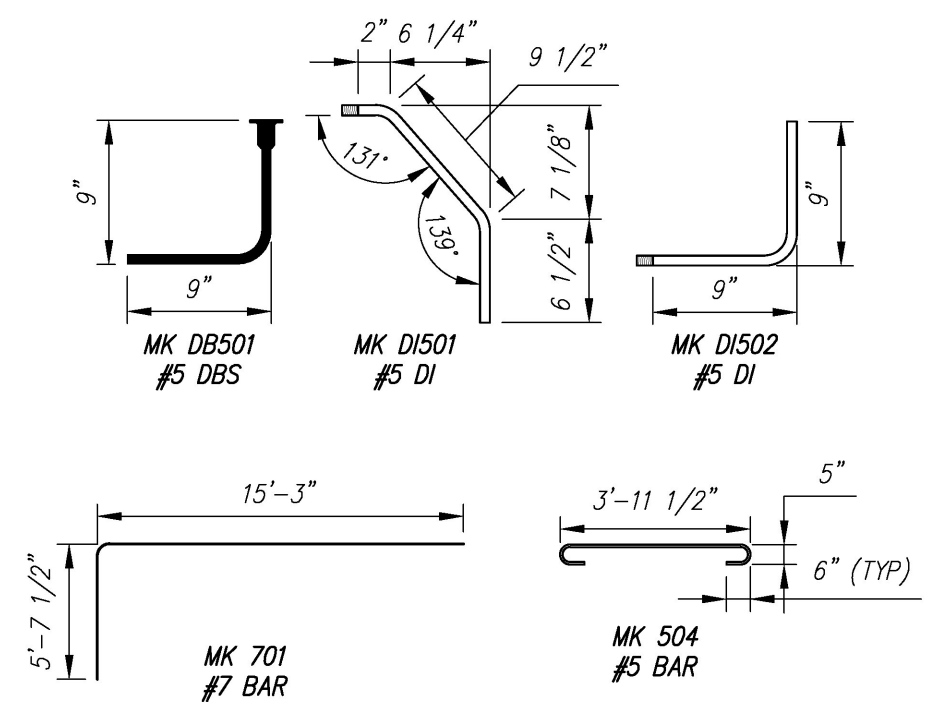
Date: 4/27/16

Signature: *[Handwritten Signature]*

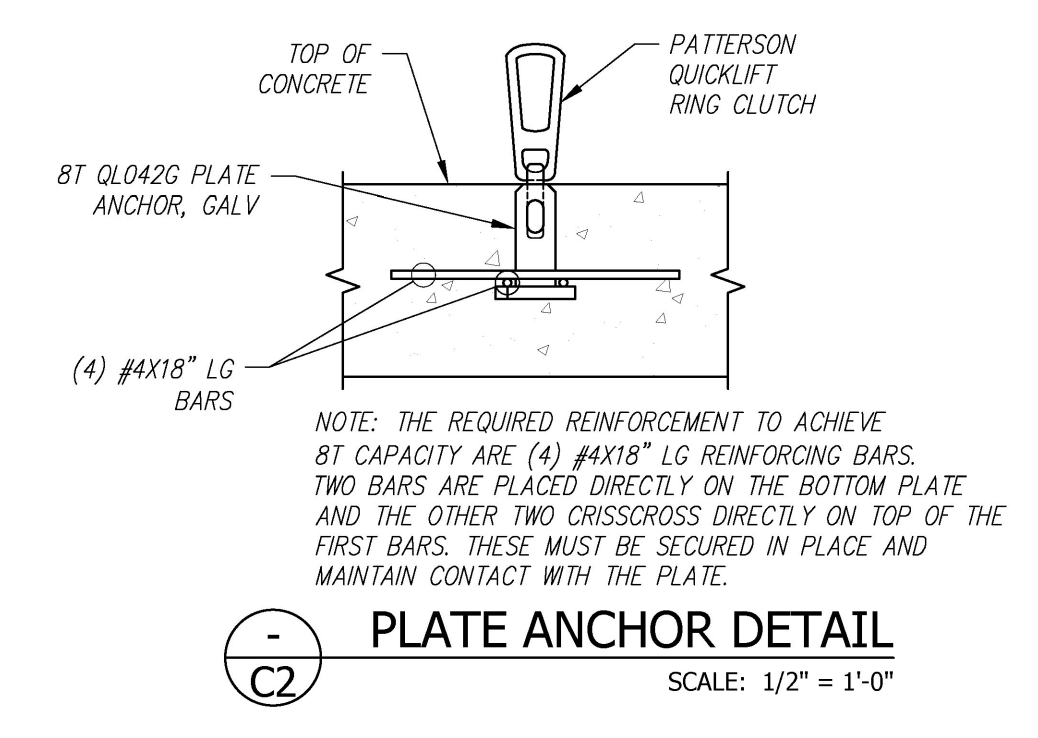
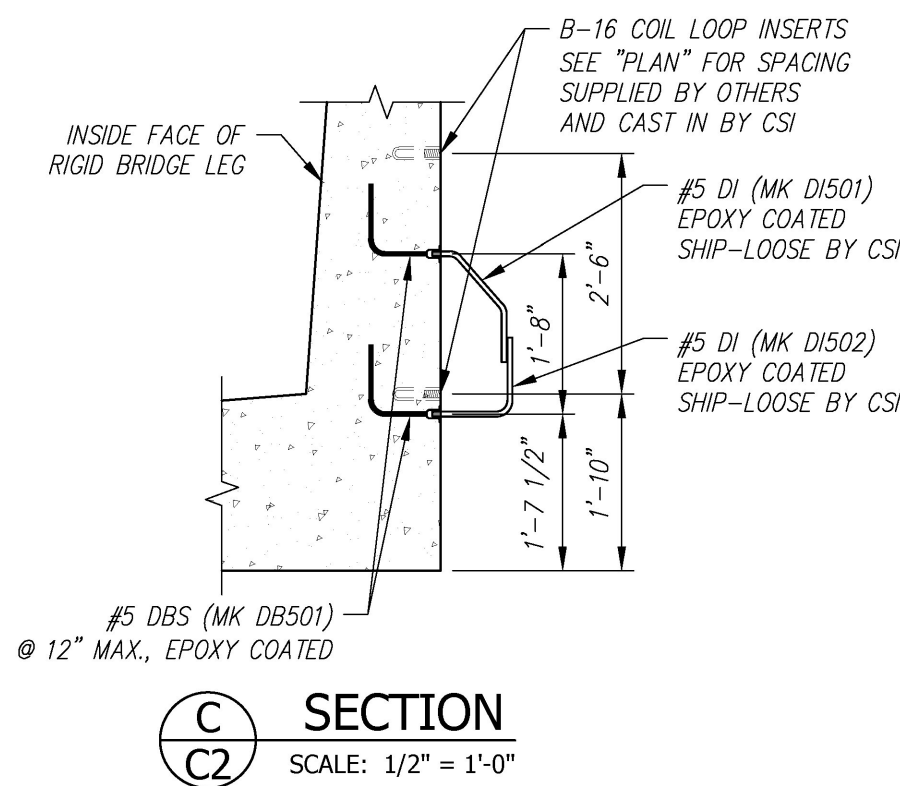
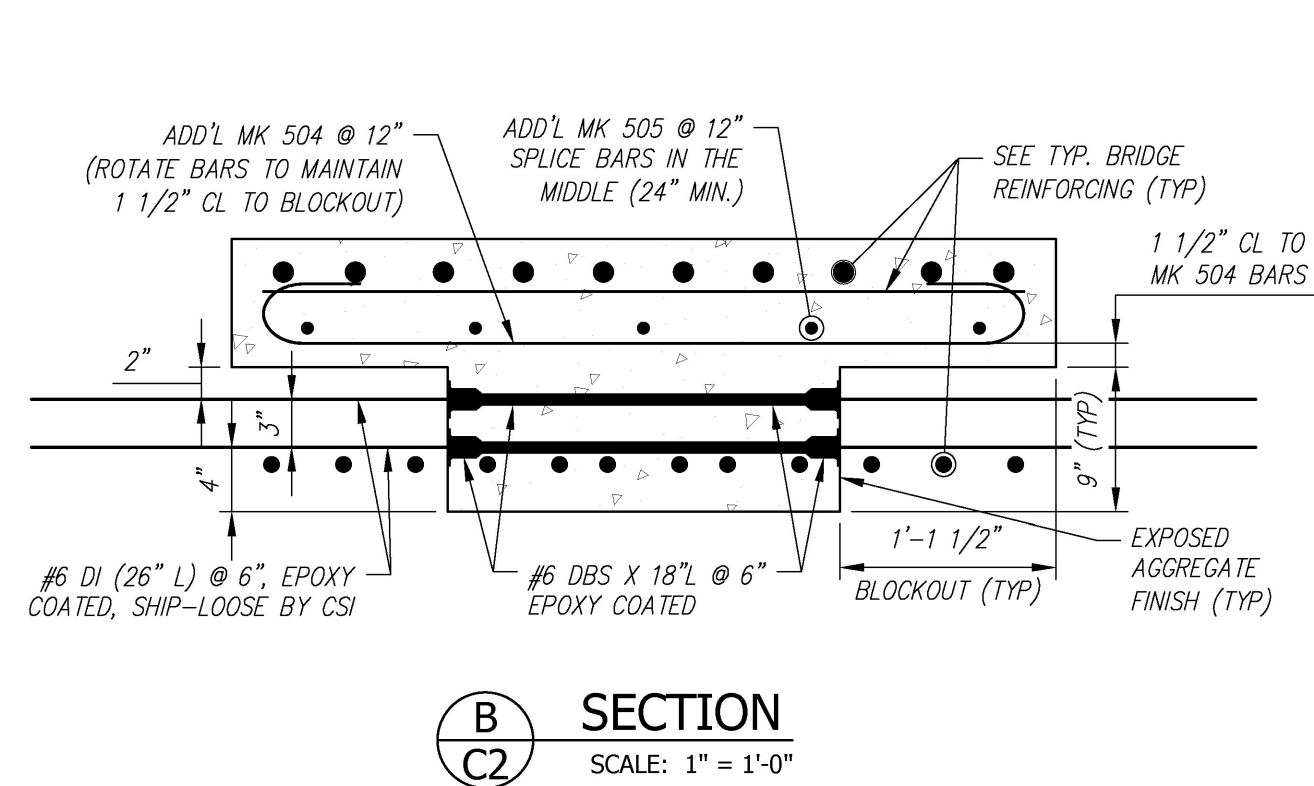
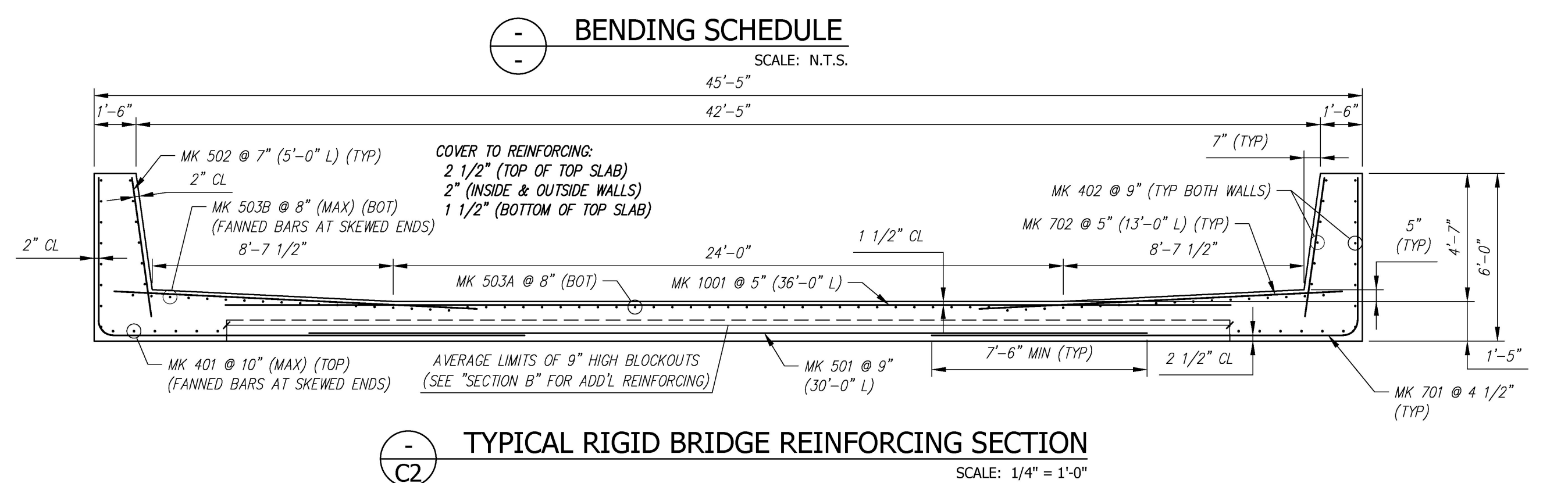
Stantec

Vermont Agency of Transportation
RECEIVED
 ON: April 27, 2016
 and Checked for CONFORMANCE
 BY: Rob Young DATE: 04/28/2016

This review by Stantec Consulting Services Inc. is for the sole purpose of ascertaining conformance with the general design concept. This review shall not mean that Stantec Consulting Services Inc approves the detail design inherent in the shop drawings, responsibility for which shall remain with the Contractor. Submitting same, and such review shall not release the Contractor of his responsibility for errors or omissions in the shop drawing or of his responsibility for meeting all requirements of the Contract Documents. The contractor is responsible for dimensions to be confirmed and correlated at the job site, for information that pertains solely to the fabrication processes or to techniques of construction and installation and for coordination of the work of all subcontractors.



ALL REBAR TO BE EPOXY COATED			
MK	QTY	LENGTH	MAX
401	#4	12	5' - 8.5"
402	#4	28	5' - 8.5"
501	#5	6	30' - 0"
502	#5	22	5' - 0"
503A	#5	58	3' - 11.5"
503B	#5	16	5' - 8.5"
504	#5	45	5' - 9.5"
505	#5	10	24' - 0"
701	#7	24	20' - 10"
702	#7	20	13' - 0"
1001	#10	10	36' - 0"



Contractor is to verify that all information shown on drawings has been thoroughly checked, complies with the contract documents and is adequate to meet the field conditions. Some dimensions and details may differ slightly from contract drawings to accommodate the manufacturing or design process. Approval of this drawing indicates that any deviation from the contract documents has been reviewed and found to be acceptable. Production will not commence until receipt of signed, approved shop drawings.

This drawing contains information proprietary to CONCRETE SYSTEMS, INC. This drawing is disclosed with the understanding that it will be retained in confidence and its use limited solely to the purpose for which it is disclosed. It is understood that no reproduction of this drawing is authorized without permission from CONCRETE SYSTEMS, INC. and that it will be returned to CONCRETE SYSTEMS, INC. upon request.

Rev.	Date	DESCRIPTION	By
10			
9			
8			
7			
6			
5			
4			
3			
2			
1			

This drawing is based upon information provided from the following documents and/or sources:

Engineer: STANTEC CONSULTING SERVICES, INC.
 Project No:
 Drawings: PROJECT PLANS

Specifications:
 Other Sources:

Concrete Systems Inc.
 9 Commercial St., Hudson, NH, 03051
 Phone 603-889-4163
 Fax 603-889-2417

STATE AGENCY
 VTrans
 Working to Get You There
 Where Others Fail

Drawn by: A. KOSTENKO
 Date: 04/22/2016
 Reviewed by:
 Date:
 Approved by:
 Date:

VTAOT PROJ. NO.: BRF 0151(21)

MILLER CONSTRUCTION, INC.
 ROUTE 106 BRIDGE REPLACEMENT T.H. 61 (KENDALL ROAD)
 WOODSTOCK, VT

RIGID BRIDGE SHOP DRAWING - C2

REV 0

Quantity: Project No: SHEET C2 OF