

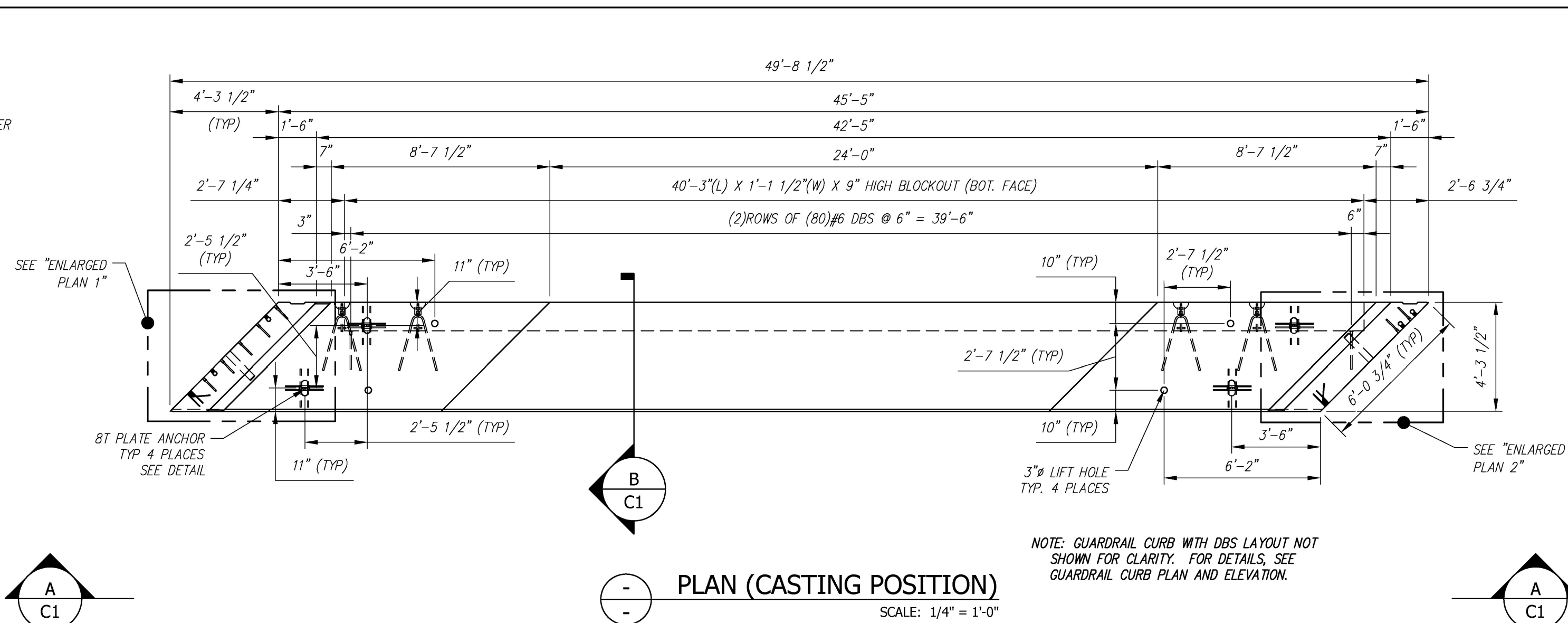
**1 ENLARGED PLAN**  
SCALE: 1/2" = 1'-0"

Vermont Agency of Transportation

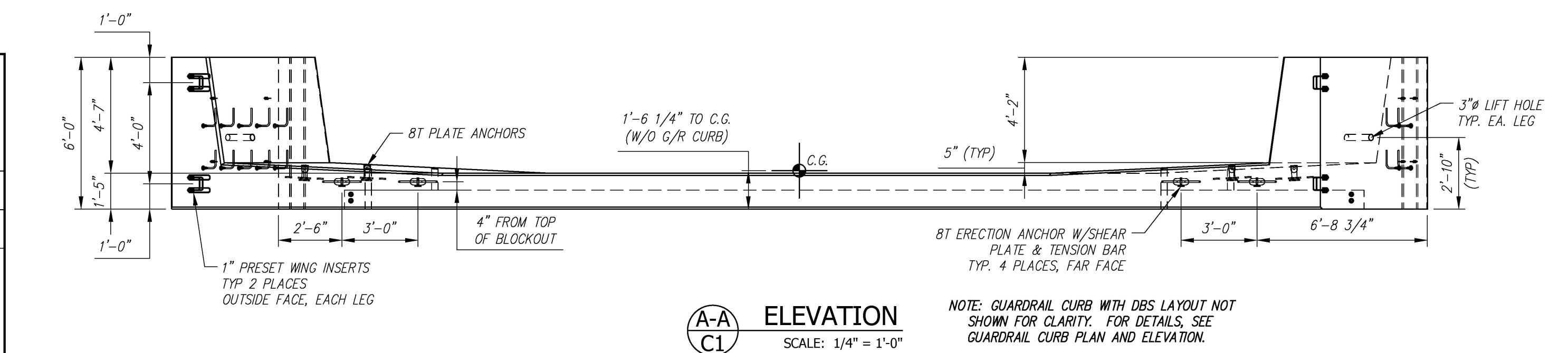
**RECEIVED**  
ON: April 27, 2016  
and Checked for  
**CONFORMANCE**  
BY: Rob Young DATE: 04/28/2016

REVIEWED:	X
REVIEWED, REVISIONS	
NOTED:	
REVISE AND RESUBMIT	
NOT REVIEWED	
Date:	4/27/16
Signature:	<i>[Signature]</i>

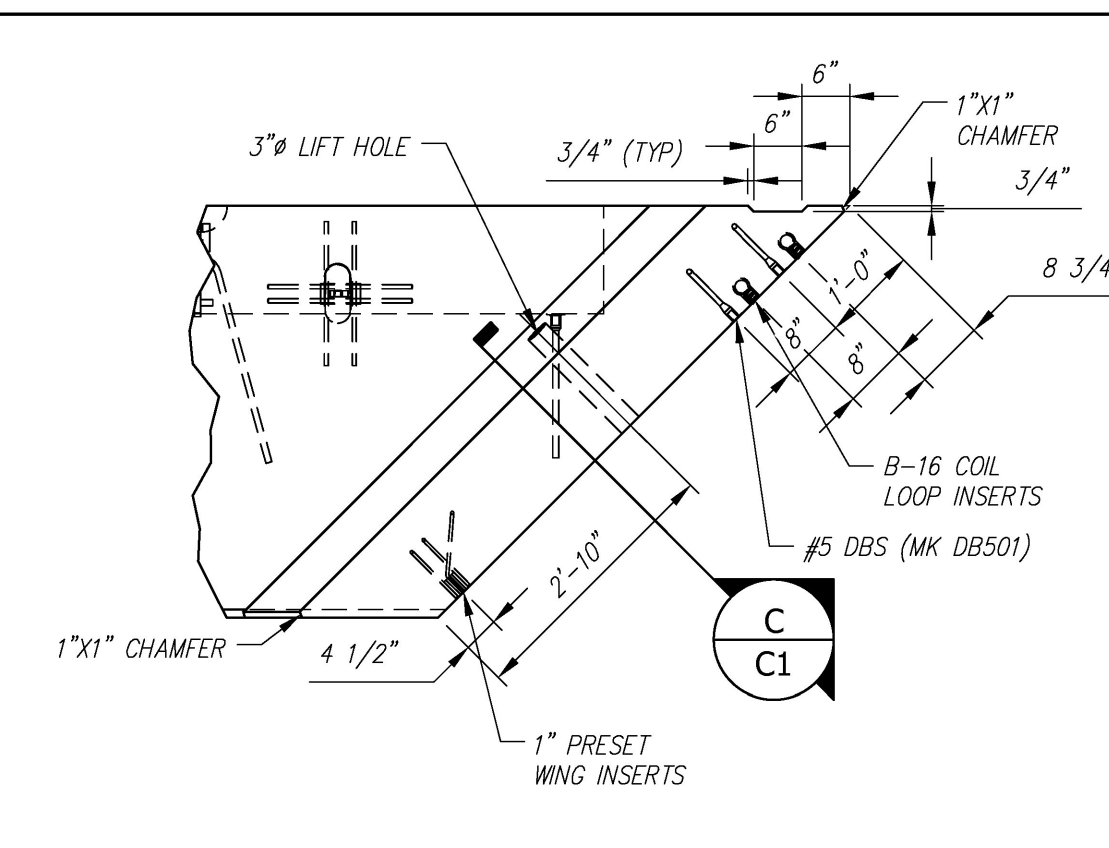
This review by Stantec Consulting Services Inc. is for the sole purpose of ascertaining conformance with the general design concept. This review shall not mean that Stantec Consulting Services Inc. approves the detail design inherent in the shop drawings, responsibility for which shall remain with the Contractor. Submitting same, and such review shall not relieve the Contractor of his responsibility for errors or omissions in the shop drawing or of his responsibility for meeting all requirements of the Contract Documents. The contractor is responsible for dimensions to be confirmed and correlated at the job site, for information that pertains solely to the fabrication processes or to techniques of construction and installation and for coordination of the work of all subcontractors.



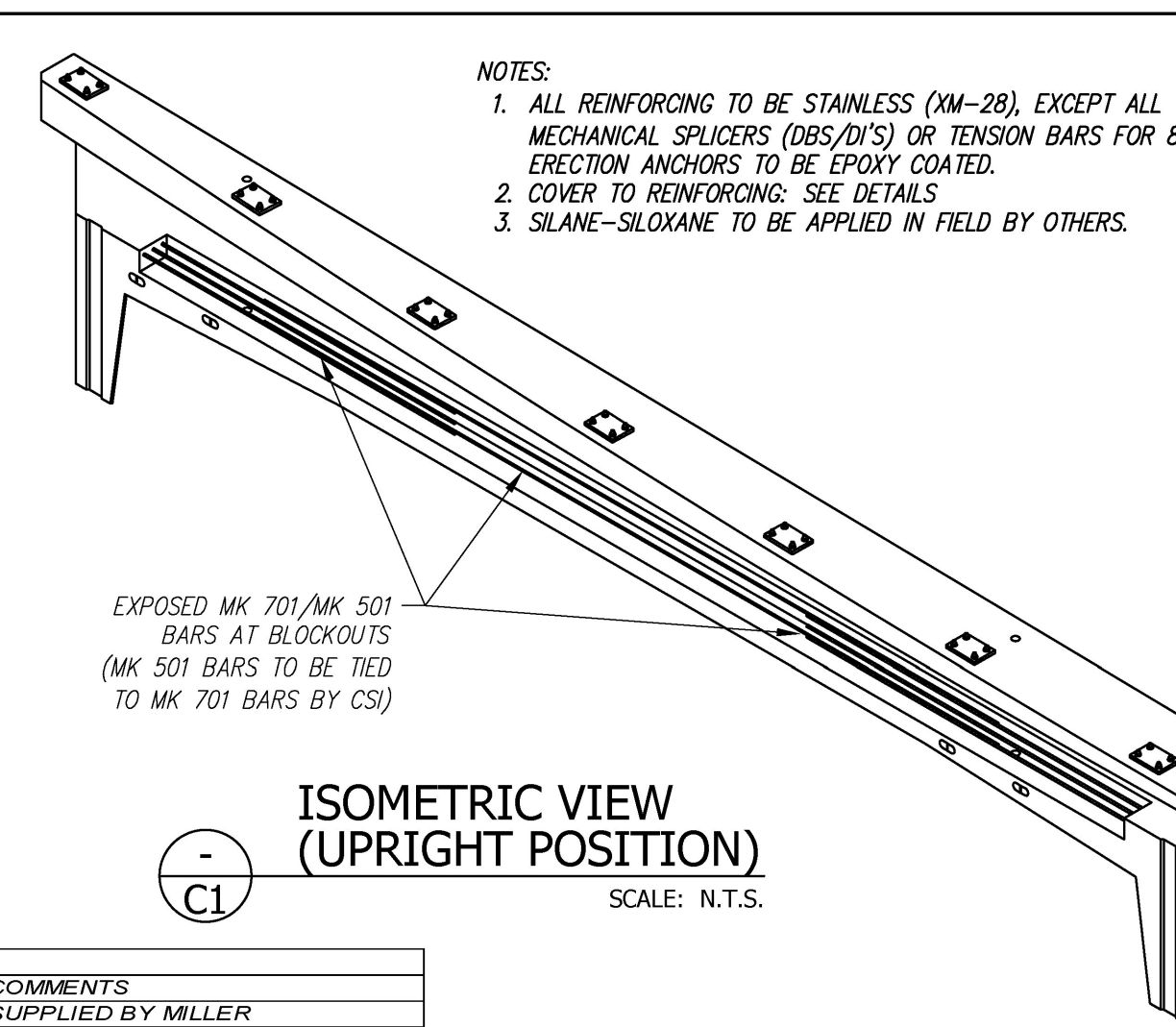
**PLAN (CASTING POSITION)**  
SCALE: 1/4" = 1'-0"



**ELEVATION**  
SCALE: 1/4" = 1'-0"

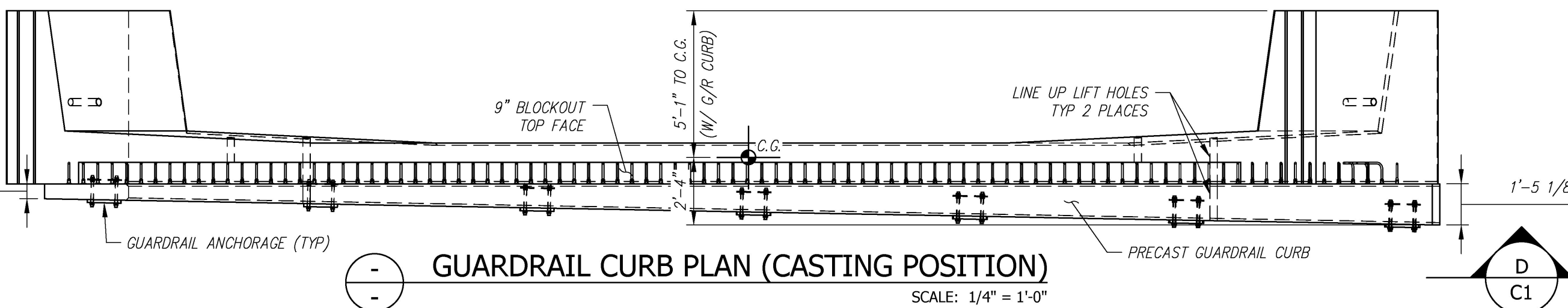


**2 ENLARGED PLAN**  
SCALE: 1/2" = 1'-0"

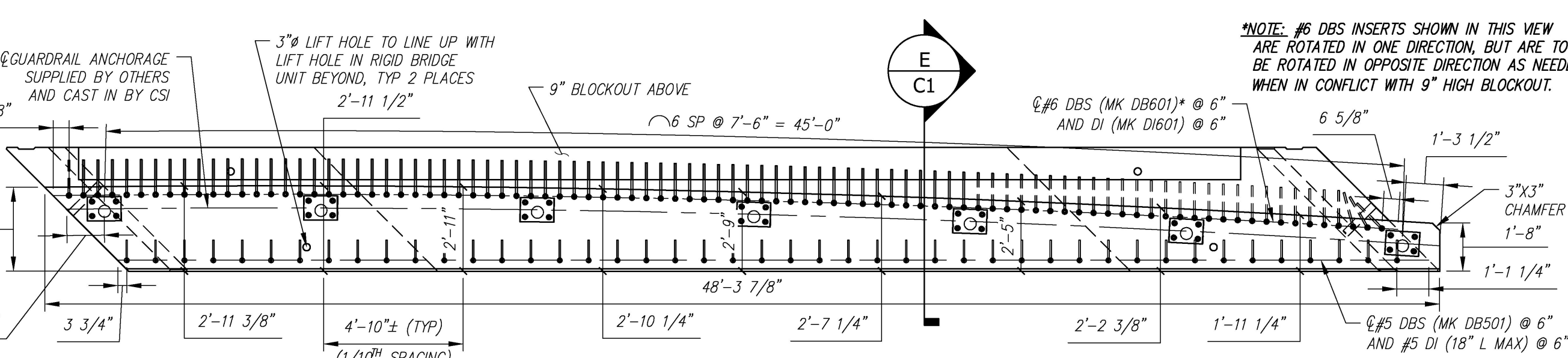


**ISOMETRIC VIEW (UPRIGHT POSITION)**  
SCALE: N.T.S.

C1 - BILL OF MATERIALS / EMBEDS			
CSI ID#	DESCRIPTION	QTY	UM
SBO	B-16 COIL LOOP INSERTS	8	EA
DTJ	DBSAE #6 X 24" EPOXY	92	EA
DTJ	8TON ERECTION ANCHOR GALV QL149G	4	EA
DTJ	8TON PLATE ANCHOR GALV QL042G	4	EA
EM-00005	1" X 8" PRESET WING INSERTS	4	EA
EM-00013	DBSAE #5 X 18" EPOXY	59	EA
EM-00015	DBSAE #6 X 18" EPOXY	160	EA
EM-00033	3" FOAM CORE PVC	7	FT
DTJ	REBAR #4 STAINLESS (XM-28)	236	LB
DTJ	REBAR #5 STAINLESS (XM-28)	1165	LB
DTJ	REBAR #7 STAINLESS (XM-28)	1553	LB
DTJ	REBAR #10 STAINLESS (XM-28)	1549	LB
MX-FA5000SC30	MIX DESIGN - FLY ASH 5000 SELF COMPACTIN	12.13	CY
C1 GUARDRAIL CURB - BILL OF MATERIALS / EMBEDS			
SBO	GUARDRAIL ANCHORAGE	7	EA
DTJ	DI # 6 X 24" EPOXY	92	EA
EM-00021	DI #5 X 18" EPOXY	45	EA
EM-00033	3" FOAM CORE PVC	3	FT
DTJ	REBAR #5 STAINLESS (XM-28)	451	LB
MX-FA5000SC30	MIX DESIGN - FLY ASH 5000 SELF COMPACTIN	4.23	CY
SHIP-LOOSE - BILL OF MATERIALS			
EM-00021	DI #5 X 18" EPOXY	14	EA
DTJ	DI # 6 X 26" EPOXY	160	EA



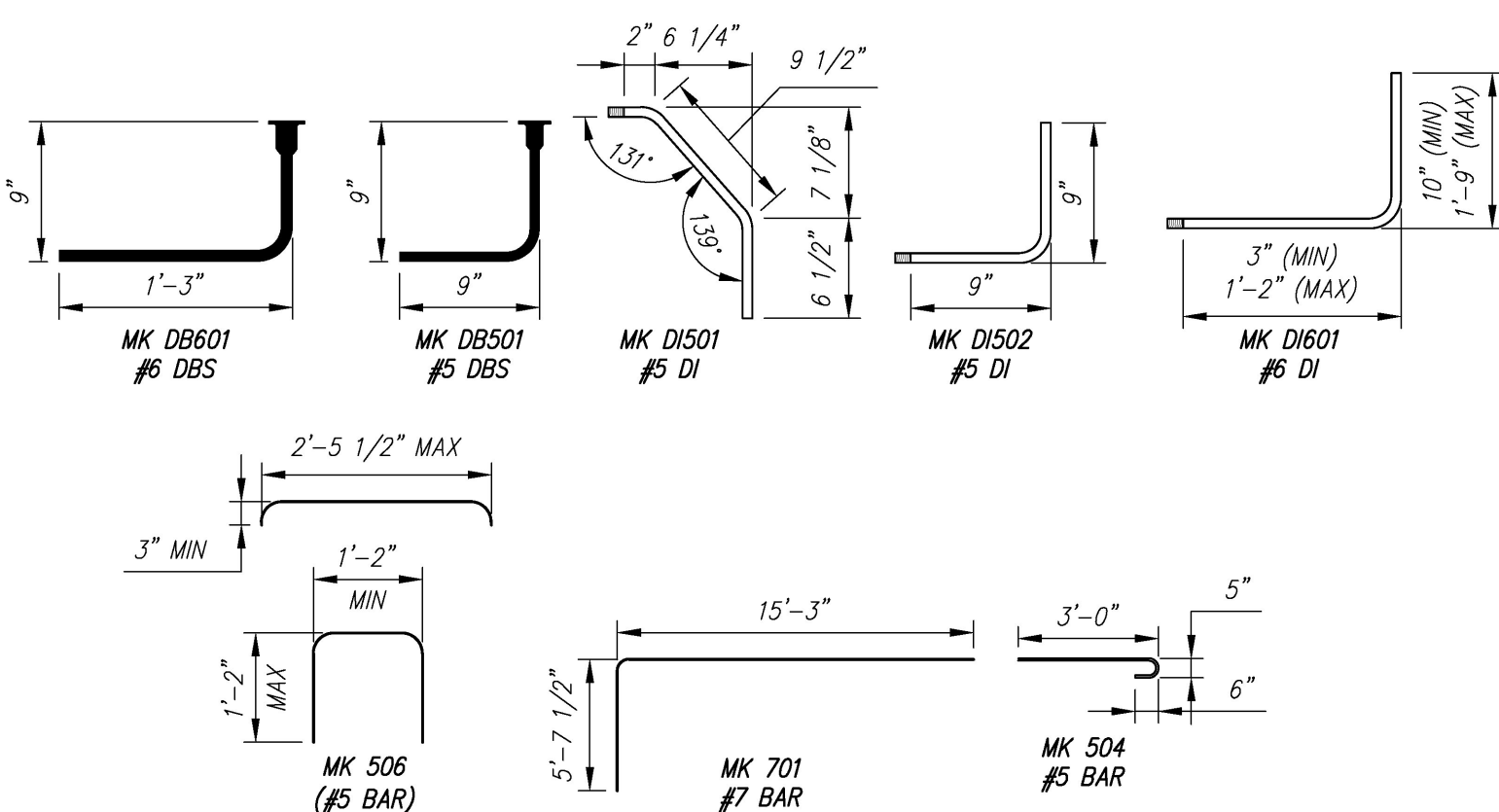
**GUARDRAIL CURB PLAN (CASTING POSITION)**  
SCALE: 1/4" = 1'-0"



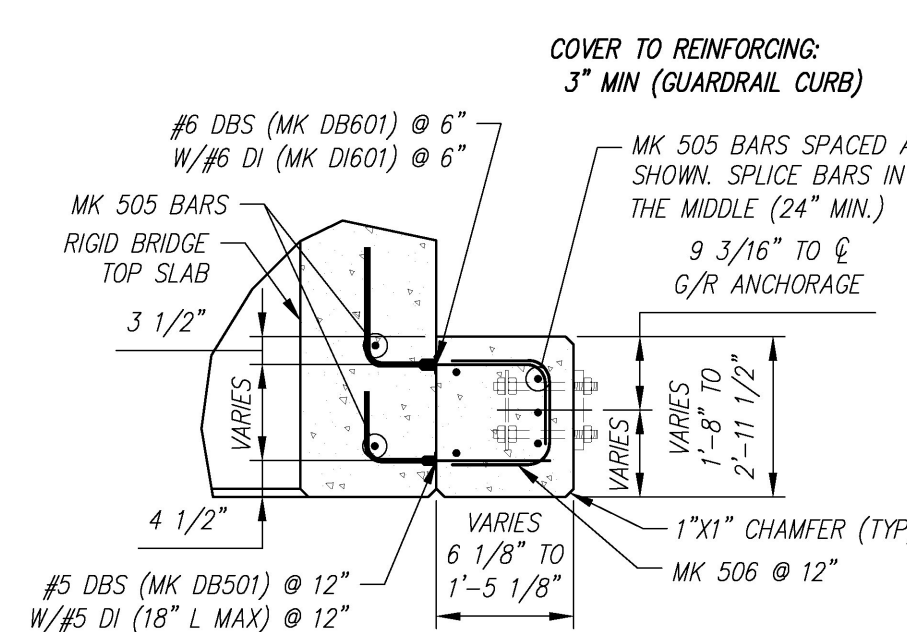
**GUARDRAIL CURB ELEVATION**  
SCALE: 1/4" = 1'-0"

ALL REBAR TO BE STAINLESS		
C1 Rebar Schedule		
MK	QTY	LENGTH
401A #4	48	2'-10"
401B #4	10	5'-8.5"
402 #4	28	5'-8.5"
501 #5	6	30'-0"
502 #5	22	5'-0"
503A #5	68	3'-11.5"
503B #5	16	5'-8.5"
504 #5	41	3'-11"
505 #5	12	24'-0"
701 #7	24	20'-10"
702 #7	20	13'-0"
1001 #10	10	36'-0"

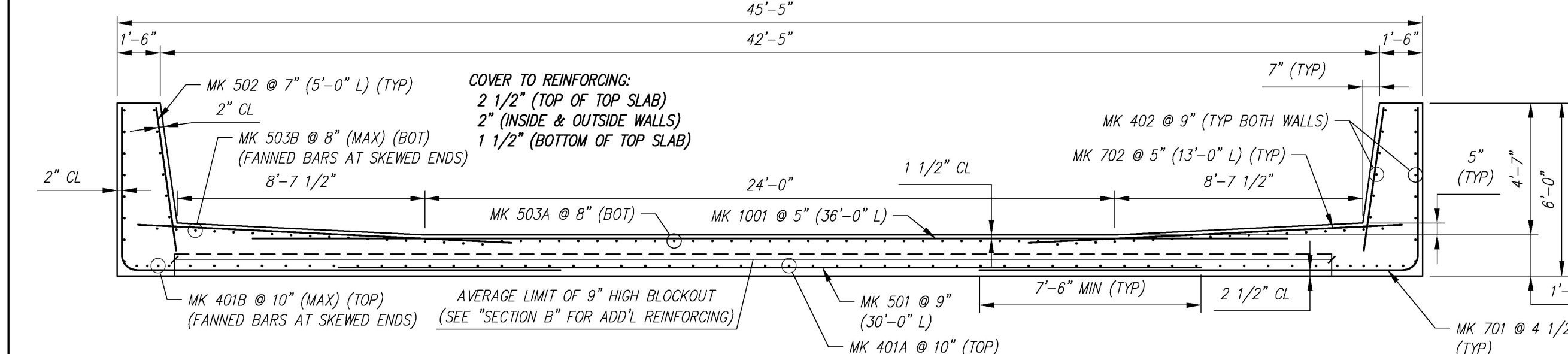
ALL REBAR TO BE STAINLESS		
C1 G/R Curb Rebar Schedule		
MK	QTY	LENGTH
505 #5	10	24'-0"
506 #5	48	4'-0"



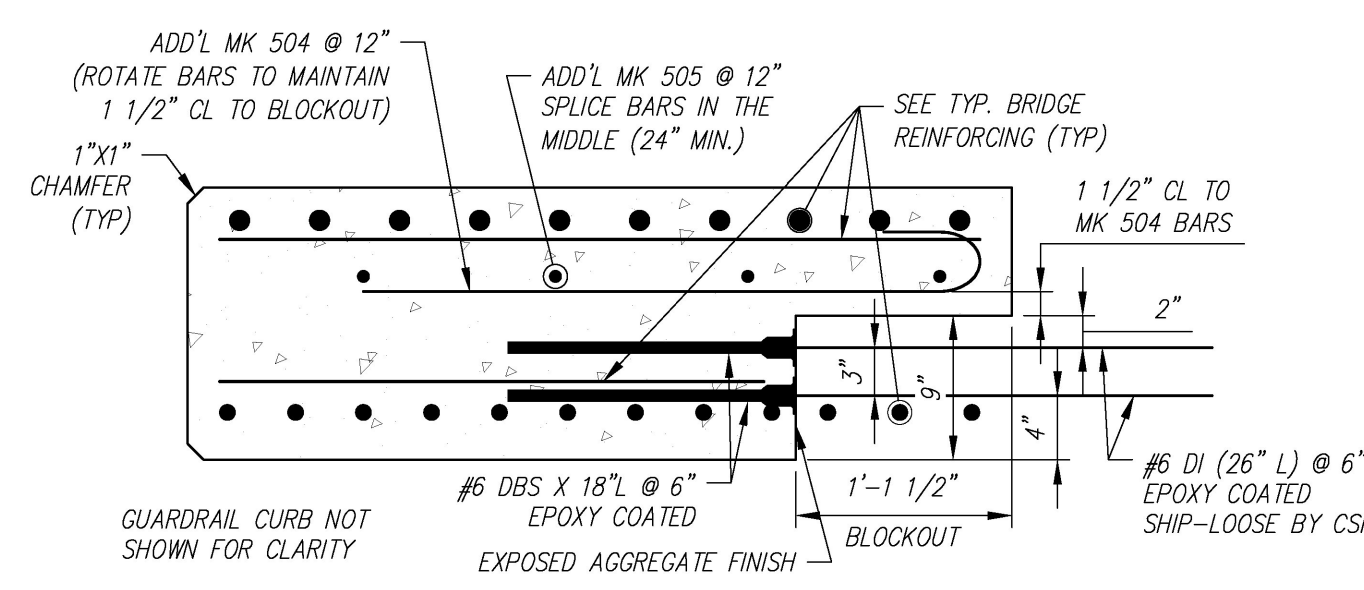
**BENDING SCHEDULE**  
SCALE: N.T.S.



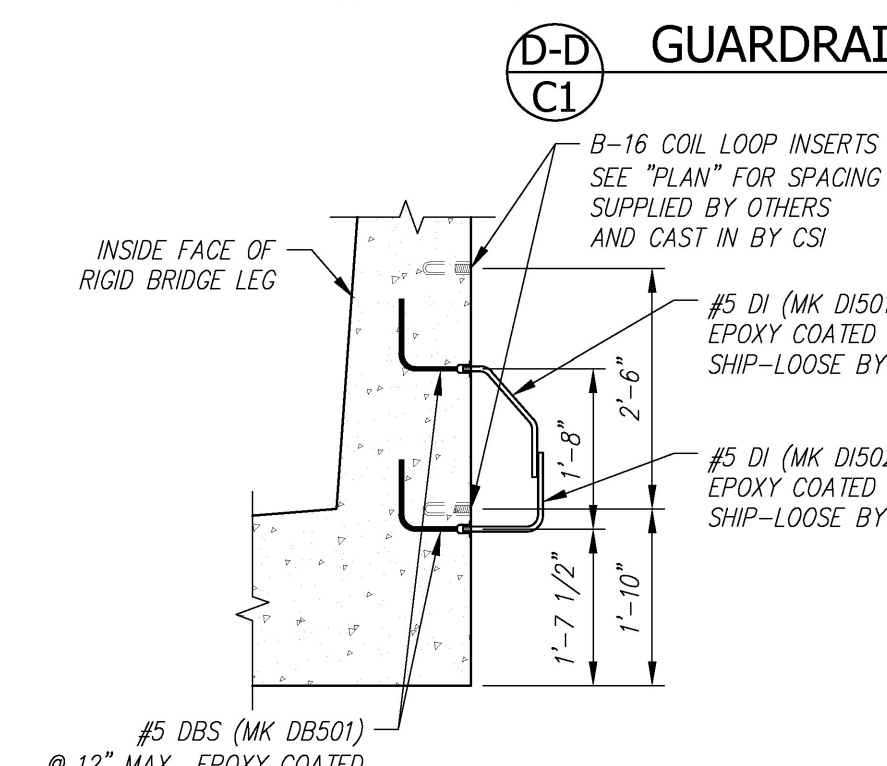
**GUARDRAIL CURB SECTION**  
SCALE: 1/2" = 1'-0"



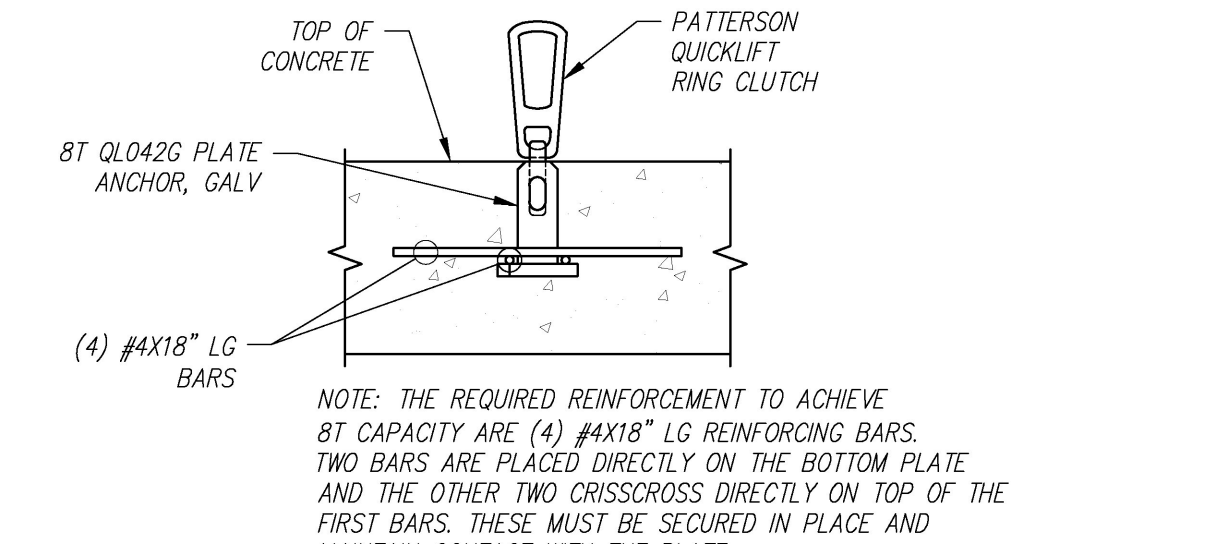
**TYPICAL RIGID BRIDGE REINFORCING SECTION**  
SCALE: 1/4" = 1'-0"



**SECTION**  
SCALE: 1" = 1'-0"



**SECTION**  
SCALE: 1/2" = 1'-0"



**PLATE ANCHOR DETAIL**  
SCALE: 1/2" = 1'-0"

PIECE QUANTITY: 1 EACH  
WEIGHT: 33.13 TONS

Contractor is to verify that all information shown on drawings has been thoroughly checked, complies with the contract documents and is adequate to meet the field conditions. Some dimensions and details may differ slightly from contract drawings to accommodate the manufacturing or design process. Approval of this drawing indicates that any deviation from the contract documents has been reviewed and found to be acceptable. Production will not commence until receipt of signed, approved shop drawings.

This drawing contains information proprietary to CONCRETE SYSTEMS, INC. This drawing is disclosed with the understanding that it will be retained in confidence and its use limited solely to the purpose for which it is disclosed. It is understood that no reproduction of this drawing is authorized without permission from CONCRETE SYSTEMS, INC. and that it will be returned to CONCRETE SYSTEMS, INC. upon request.

Rev.	Date	DESCRIPTION	By
10			
9			
8			
7			
6			
5			
4			
3			
2			
1			

This drawing is based upon information provided from the following documents and/or sources:  
 Engineer: STANTEC CONSULTING SERVICES, INC.  
 Project No:  
 Drawings: PROJECT PLANS  
 Specifications:  
 Other Sources:

Concrete Systems Inc.  
9 Commercial St., Hudson, NH, 03051  
Phone 603-889-4163  
Fax 603-889-2417

STATE AGENCY  
VTrans  
Drawn by: A. KOSTENKO  
Reviewed by: [Signature]  
Date: 04/22/2016

VTAOT PROJ. NO.: BRF 0151(21)  
MILLER CONSTRUCTION, INC.  
ROUTE 106 BRIDGE REPLACEMENT T.H. 61 (KENDALL ROAD)  
WOODSTOCK, VT  
RIGID BRIDGE SHOP DRAWING - C1  
Drawing No: R-S22624-C1  
REV 0  
Quantity: Project No: SHEET C1 OF