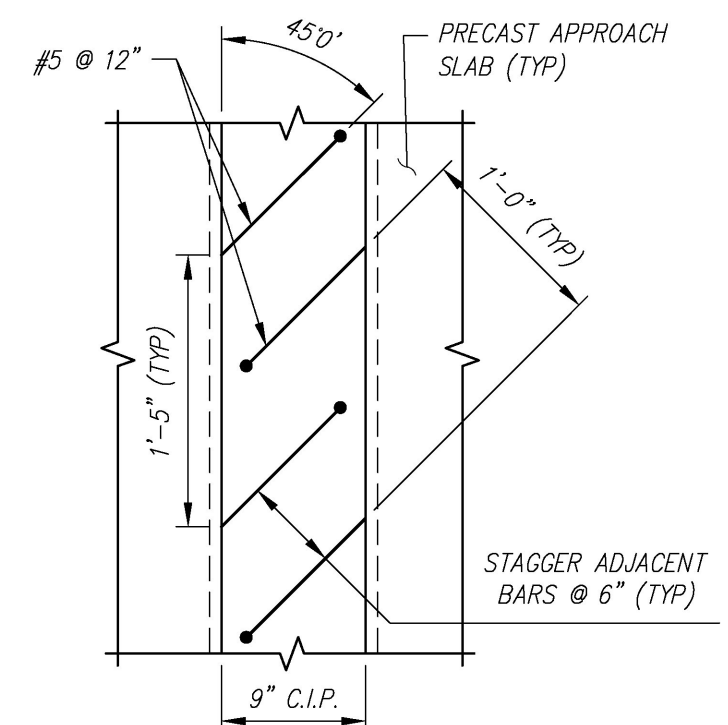


APPROACH SLAB PLAN  
SCALE: 1/4" = 1'-0"



TYPICAL C.I.P. CLOSURE POUR PLAN  
SCALE: 1" = 1'-0"

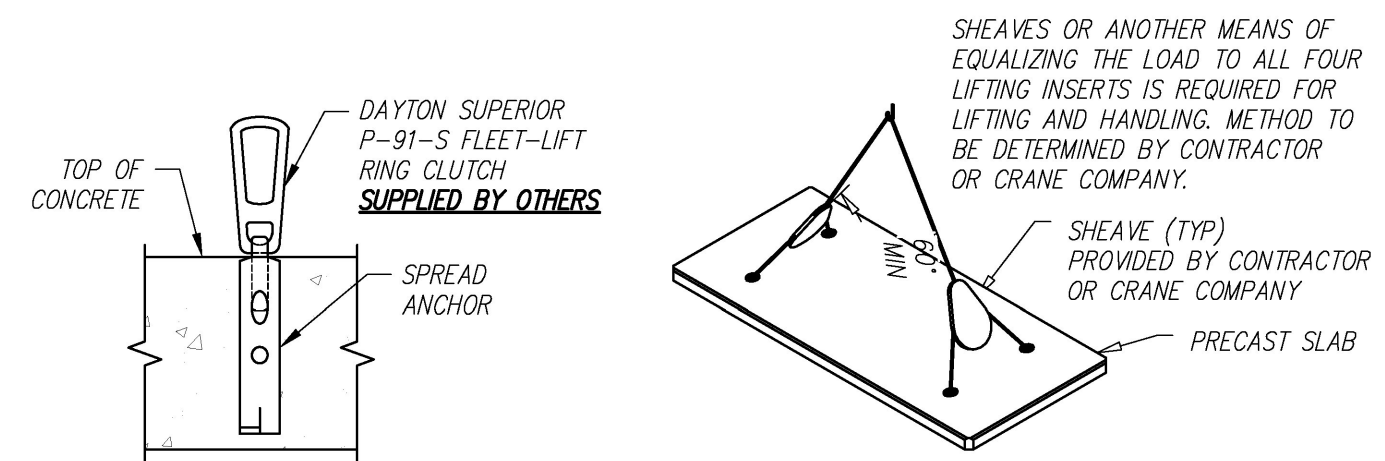
REVIEWED:	X
REVIEWED, REVISIONS NOTED:	
REVISE AND RESUBMIT	
NOT REVIEWED	
Date:	4/27/16
Signature:	<i>Thomas E. Kille</i>

**Stantec**

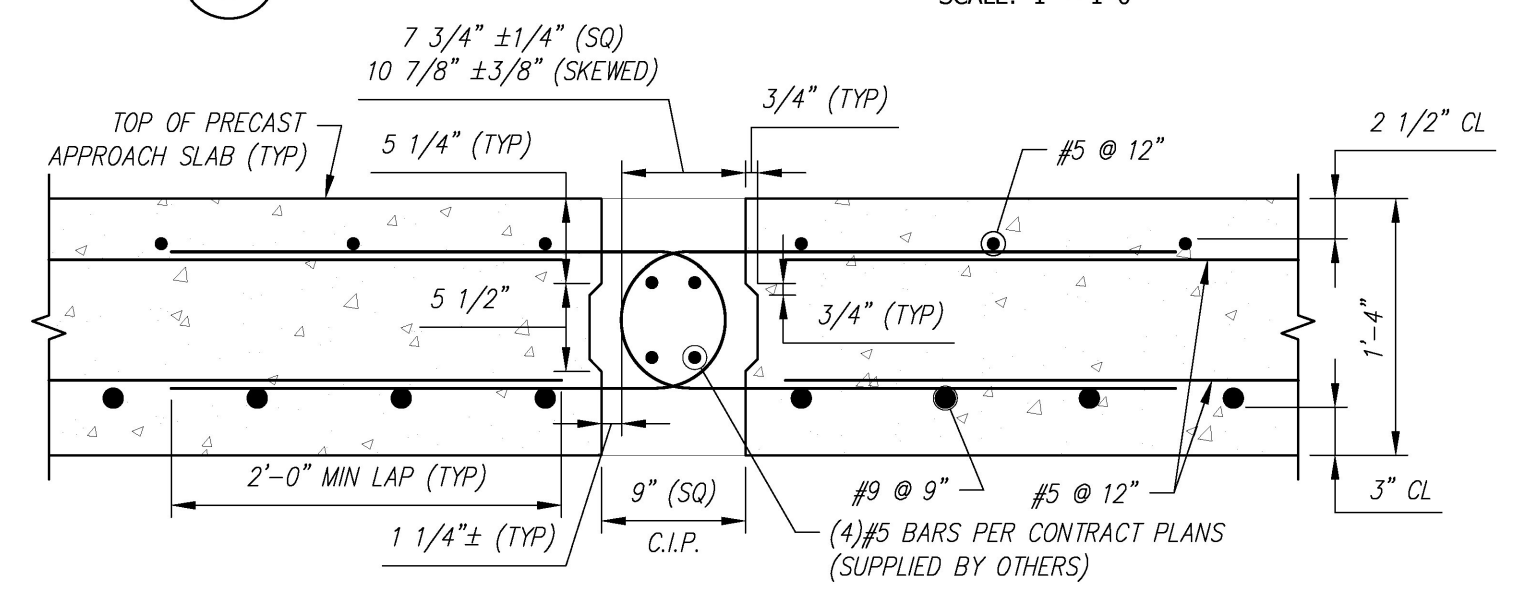
This review by Stantec Consulting Services Inc. is for the sole purpose of ascertaining conformance with the general design concept. This review shall not mean that Stantec Consulting Services Inc. approves the detail design inherent in the shop drawings, responsibility for which shall remain with the Contractor. Submitting same, and such review shall not relieve the Contractor of his responsibility for errors or omissions in the shop drawing or of his responsibility for meeting all requirements of the Contract Documents. The contractor is responsible for dimensions to be confirmed and correlated at the job site, for information that pertains solely to the fabrication processes or to techniques of construction and installation and for coordination of the work of all subtrades.

Vermont Agency of Transportation  
**RECEIVED**  
ON: **April 27, 2016**  
and Checked for  
**CONFIRMANCE**  
BY: Rob Young DATE: 04/28/2016

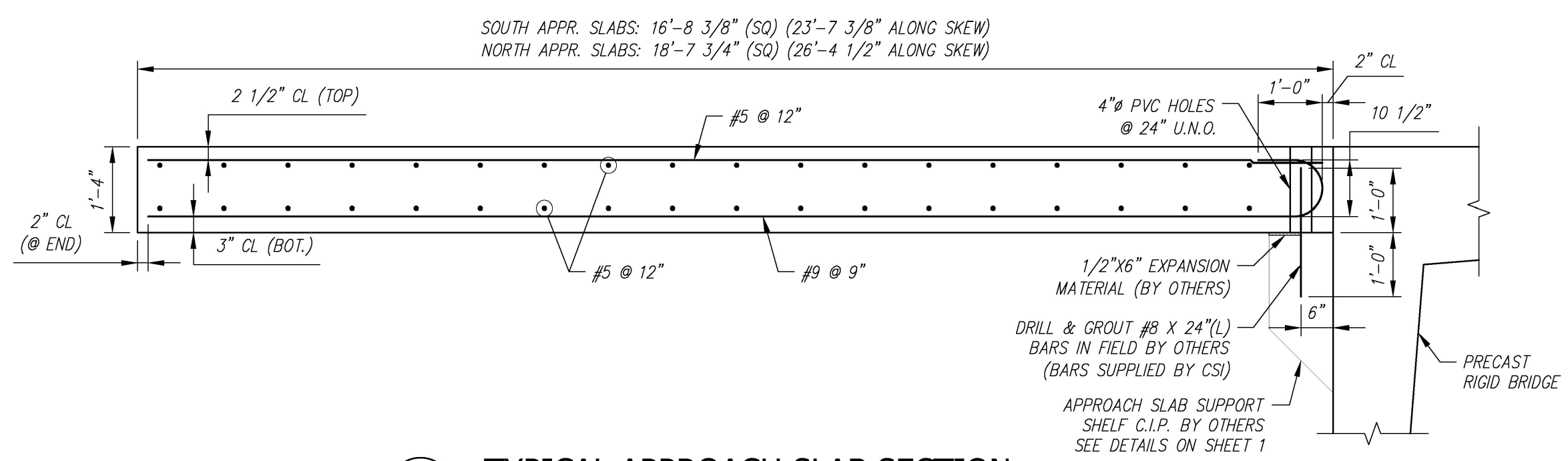
SEE SHOP DRAWINGS FOR ADDITIONAL DETAILS.



APPROACH SLAB LIFTING DETAILS  
SCALE: N.T.S.



TYPICAL C.I.P. CLOSURE POUR SECTION  
SCALE: 1" = 1'-0"



TYPICAL APPROACH SLAB SECTION  
SCALE: 1/2" = 1'-0"

APPROACH SLAB PIECE SCHEDULE (MX-FA5000SC30)				
MARK	QTY	LENGTH	YDS	WEIGHT
AS1	1	23.61'	12.18	24.67 TONS
AS2	1	23.61'	11.27	22.83 TONS
AS3	1	23.61'	11.40	23.09 TONS
AS4	1	26.38'	12.20	24.71 TONS
AS5	1	26.38'	12.37	25.06 TONS
AS6	1	26.38'	10.22	20.70 TONS

Contractor is to verify that all information shown on drawings has been thoroughly checked, complies with the contract documents and is adequate to meet the field conditions. Some dimensions and details may differ slightly from contract drawings to accommodate the manufacturing or design process. Approval of this drawing indicates that any deviation from the contract documents has been reviewed and found to be acceptable. Production will not commence until receipt of signed, approved shop drawings.

This drawing contains information proprietary to CONCRETE SYSTEMS, INC. This drawing is disclosed with the understanding that it will be retained in confidence and its use limited solely to the purpose for which it is disclosed. It is understood that no reproduction of this drawing is authorized without permission from CONCRETE SYSTEMS, INC. and that it will be returned to CONCRETE SYSTEMS, INC. upon request.

10			
9			
8			
7			
6			
5			
4			
3			
2			
1	04/08/2016	SEE REV 1 TRIANGLES.	AK
Rev.	Date	DESCRIPTION	By
		REVISIONS	

This drawing is based upon information provided from the following documents and/or sources:  
 Engineer: STANTEC CONSULTING SERVICES, INC.  
 Project No:  
 Drawings: PROJECT PLANS  
 Specifications:  
 Other Sources:

**CSI**  
Concrete Systems Inc.  
9 Commercial St., Hudson, NH, 03051  
Phone 603-889-4163  
Fax 603-889-2417

STATE AGENCY  
**VTrans**  
Working to Get You There  
safer roads. smarter transportation.

Drawn by: A. KOSTENKO  
Reviewed By:  
Approved By:  
Date: 03/03/2016

VTAOT PROJ. NO.: BRF 0151(21)  
MILLER CONSTRUCTION, INC.  
ROUTE 106 BRIDGE REPLACEMENT T.H. 61 (KENDALL ROAD)  
WOODSTOCK, VT

APPROACH SLAB PLAN AND DETAILS  
Drawing No. R-S22624-L01D  
REV 1

Quantity: Project No: SHEET 4 OF 4