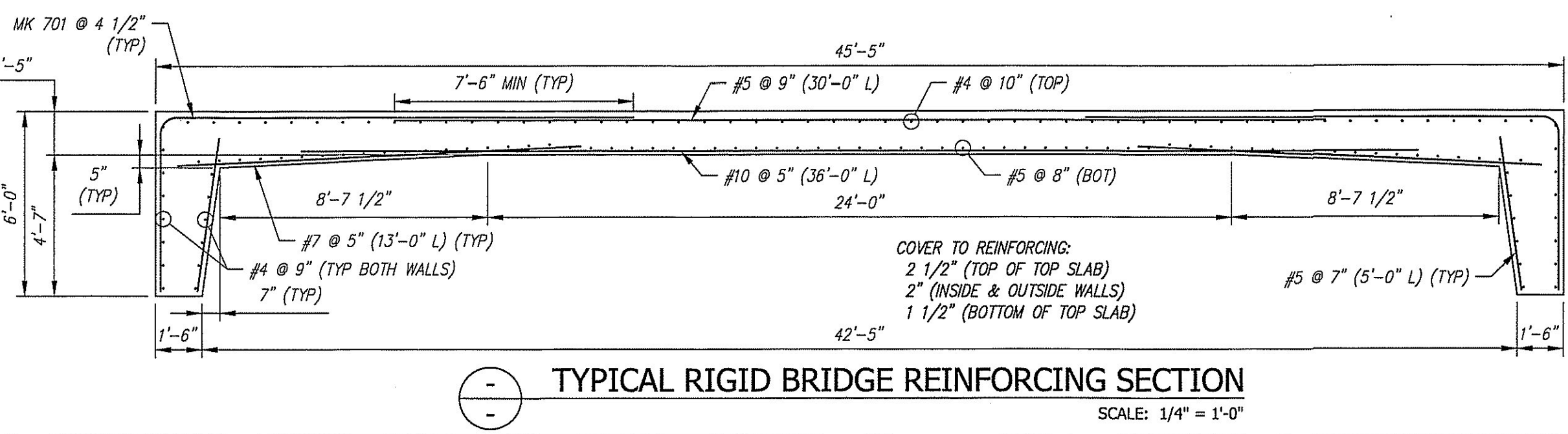


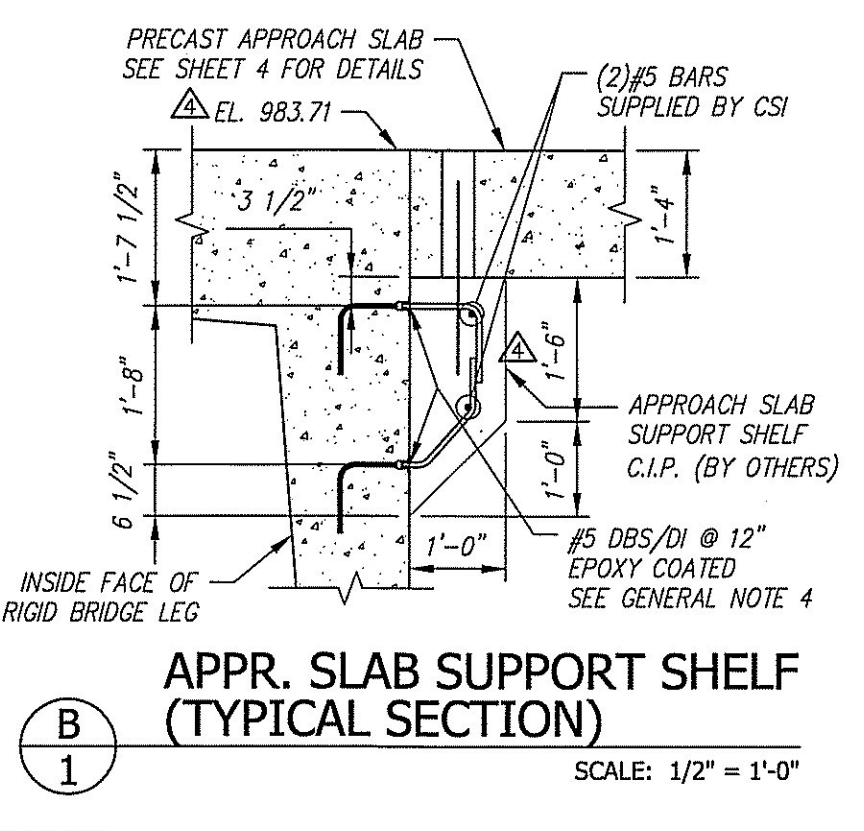
NOTE: APPROACH SLABS NOT SHOWN FOR CLARITY. FOR LAYOUT AND DETAILS, SEE SHEET 4.

- GENERAL NOTES:
- REFERENCE STANDARDS:
 - AASHTO "LRFD BRIDGE DESIGN SPECIFICATIONS" ASTM C1577
 - DESIGN PARAMETERS:
 - LIVE LOAD: HL-93
 - EARTH COVER: 0'-2"
 - CONCRETE: DESIGN STRENGTH $f'_c = 5000$ PSI
 - STRIPPING STRENGTH $f'_c = 2500$ PSI
 - UNIT WEIGHT = 150 PCF
 - REINFORCING: FASCIA RIGID BRIDGE UNITS AND GUARDRAIL CURBS - XM-28 (STAINLESS), ASTM A955, UNS24100 (VTAOT LEVEL III), EXCEPT MECHANICAL SPLICERS SHALL BE LEVEL I EPOXY COATED.
 - INTERIOR RIGID BRIDGE UNITS, WINGWALLS AND APPROACH SLABS - ASTM A615 (REBAR) GR 60, EPOXY COATED (VTAOT LEVEL I).
 - FOOTINGS & PEDESTALS - ASTM A615 (REBAR) GR 60, PLAIN (VTAOT LEVEL I).
 - SOIL: UNIT WEIGHT = 140 PCF
 - MINIMUM LATERAL PRESSURE COEFFICIENT .25
 - MAXIMUM LATERAL PRESSURE COEFFICIENT .50
 - COVER TO REINFORCING: SEE DETAILS
 - WATER REPELLANT COATING TO BE APPLIED BY CSI ON ALL EXPOSED PRECAST CONCRETE SURFACES EXCEPT FOR THE INTERIOR SURFACES OF RIGID BRIDGE.
 - DBS ARE DWEL BAR SPLICERS AND DI ARE DWEL IN BARS (BY DAYTON SUPERIOR) AND ARE SUPPLIED BY CSI. DI'S FOR C.L.P. CLOSURE POURS AND C.L.P. APPROACH SLAB SHALL BE INSTALLED IN FIELD BY OTHERS.
 - CONTRACTOR TO PROVIDE AND INSTALL 1/2" JOINT FILLER AT INTERFACE BETWEEN WINGWALLS AND RIGID FRAME LEGS.
 - PRECAST GUARDRAIL CURBS DESIGNED FOR TL-4 LOADING.
 - FOR CURING METHOD, SEE SECTION 3.5 IN THE CSI QUALITY CONTROL MANUAL.

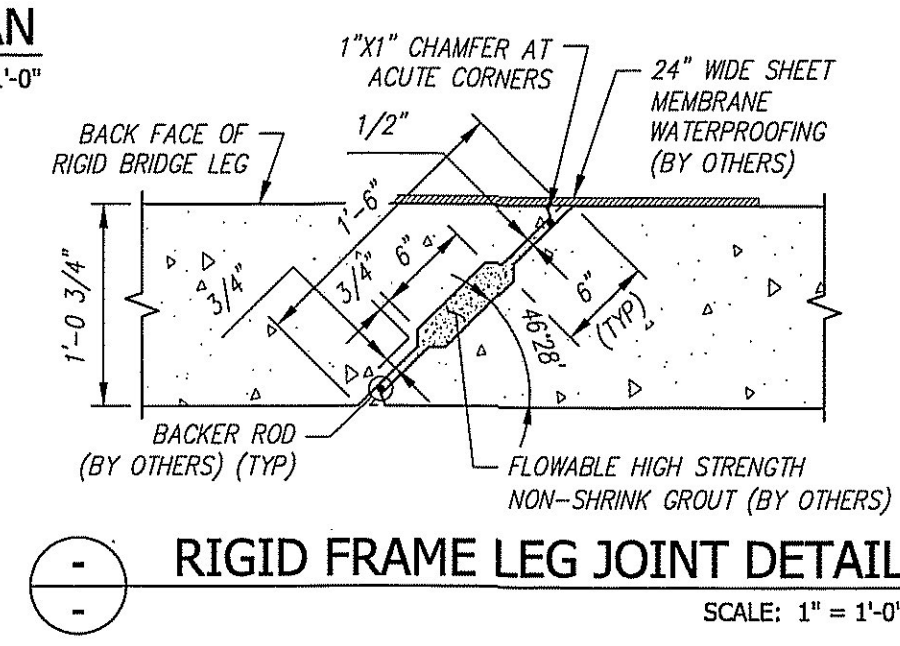
SEE SHOP DRAWINGS FOR DETAILS OR ADDITIONAL REINFORCING NOT SHOWN ON THIS SHEET.



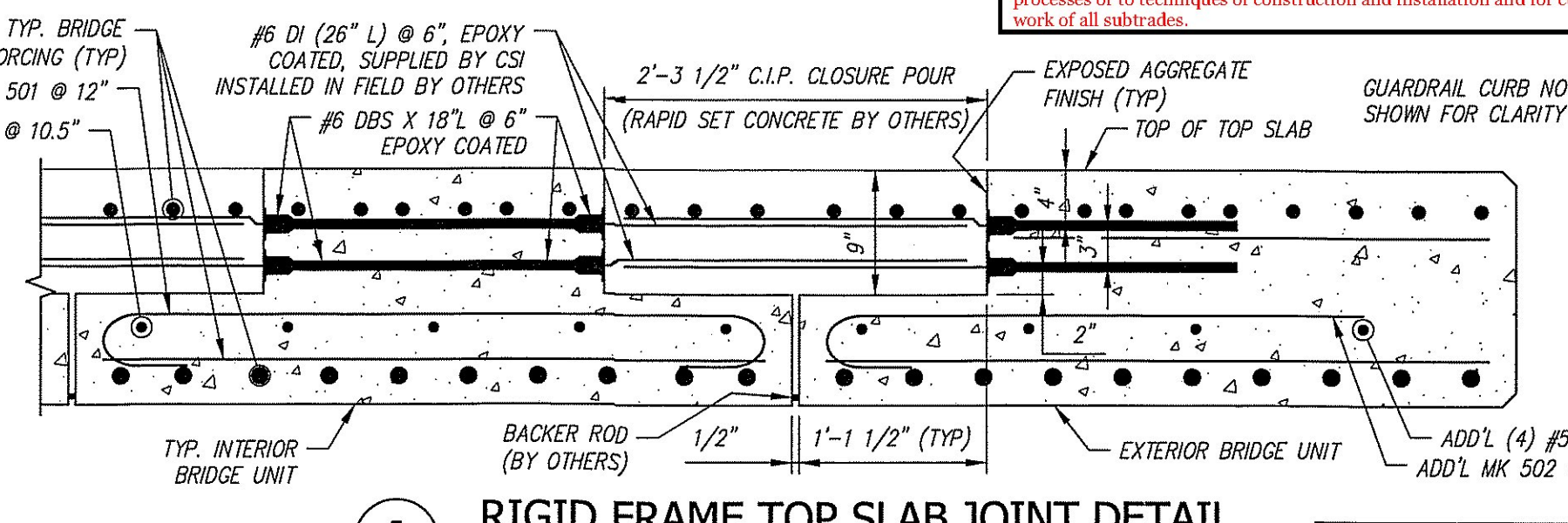
TYPICAL RIGID BRIDGE REINFORCING SECTION SCALE: 1/4" = 1'-0"



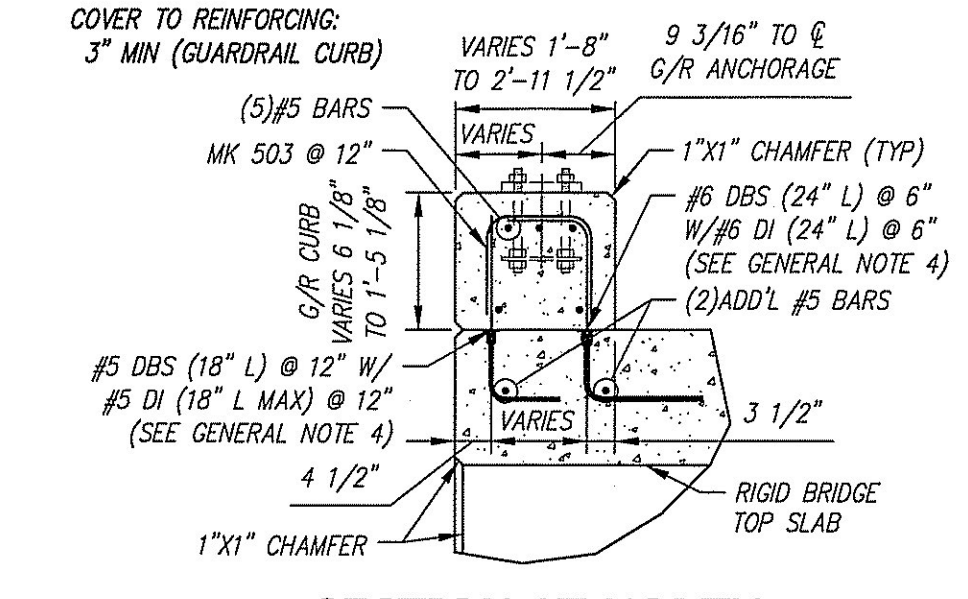
APPR. SLAB SUPPORT SHELF (TYPICAL SECTION) SCALE: 1/2" = 1'-0"



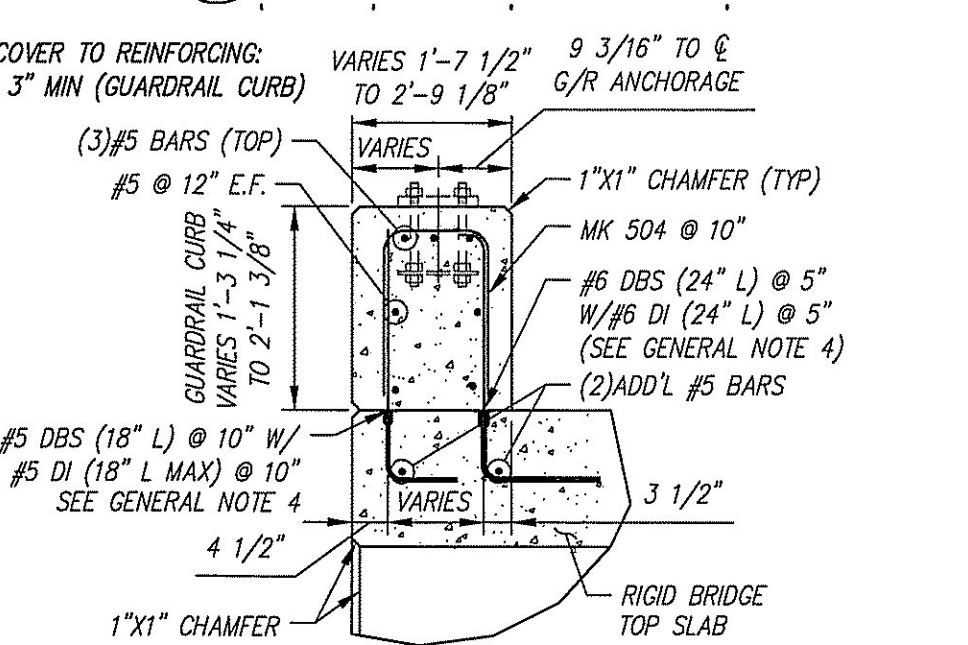
RIGID FRAME LEG JOINT DETAIL SCALE: 1" = 1'-0"



RIGID FRAME TOP SLAB JOINT DETAIL SCALE: 1" = 1'-0"



SECTION AT NORTH ATTACHED GUARDRAIL CURB SCALE: 1/2" = 1'-0"

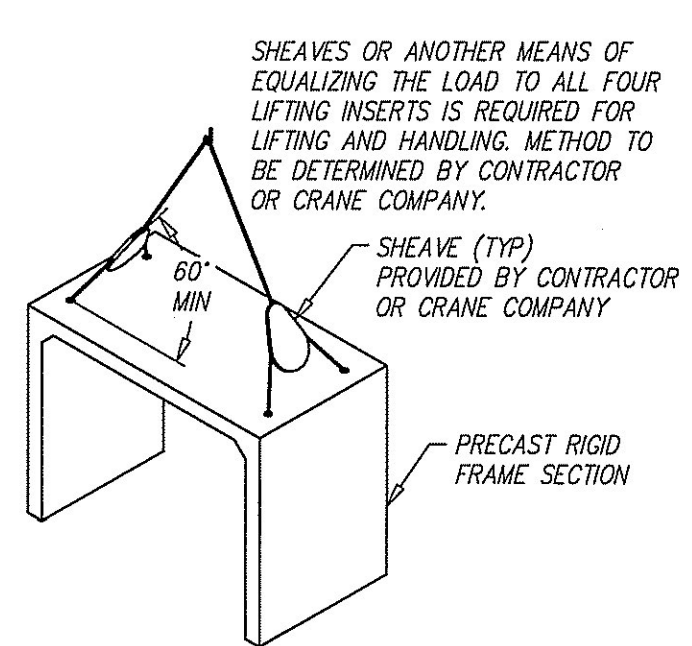


SECTION AT SOUTH ATTACHED GUARDRAIL CURB SCALE: 1/2" = 1'-0"

REVIEWED:	DATE:
REVIEWED, REVISIONS NOTED:	4/27/16
REVISED AND RESUBMIT	
NOT REVIEWED	

Signature: *Thomas E. Koster*

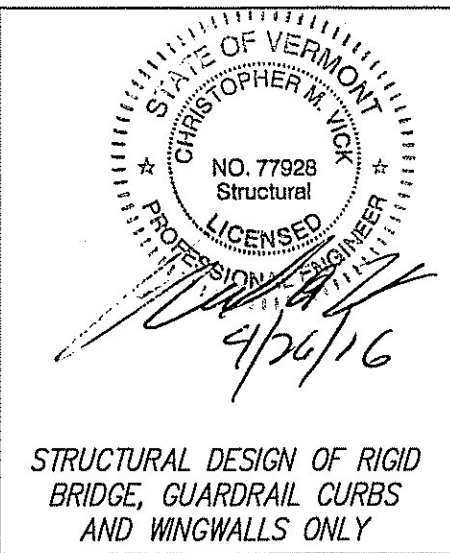
This review by Stantec Consulting Services Inc. is for the sole purpose of ascertaining conformance with the general design concept. This review shall not mean that Stantec Consulting Services Inc. approves the detail design inherent in the shop drawings, responsibility for which shall remain with the Contractor. Submitting same, and such review shall not relieve the Contractor of his responsibility for errors or omissions in the shop drawing or of his responsibility for meeting all requirements of the Contract Documents. The contractor is responsible for dimensions to be confirmed and correlated at the job site, for information that pertains solely to the fabrication processes or to techniques of construction and installation and for coordination of the work of all subtrades.



LIFTING DETAILS SCALE: N.T.S.

Contractor is to verify that all information shown on drawings has been thoroughly checked, complies with the contract documents and is adequate to meet the field conditions. Some dimensions and details may differ slightly from contract drawings to accommodate the manufacturing or design process. Approval of this drawing indicates that any deviation from the contract documents has been reviewed and found to be acceptable. Production will not commence until receipt of signed, approved shop drawings.

This drawing contains information proprietary to CONCRETE SYSTEMS, INC. This drawing is disclosed with the understanding that it will be retained in confidence and its use limited solely to the purpose for which it is disclosed. It is understood that no reproduction of this drawing is authorized without permission from CONCRETE SYSTEMS, INC. and that it will be returned to CONCRETE SYSTEMS, INC. upon request.



Rev.	Date	DESCRIPTION	By
10			
9			
8			
7			
6			
5			
4	04/22/2016	SEE REV4 TRIANGLES.	AK
3	04/13/2016	ADDED STRIPPING STRENGTH AND CURING METHOD NOTES.	AK
2	04/08/2016	SEE REV2 TRIANGLES.	AK
1	03/23/2016	SEE REV1 TRIANGLES.	AK

This drawing is based upon information provided from the following documents and/or sources:

Engineer: STANTEC CONSULTING SERVICES, INC.
 Project No:
 Drawings: PROJECT PLANS

Specifications:
 By

Other Sources:



DATE	BY	DATE	BY
02/03/2016	A. KOSTENKO		

Quantity	Project No.	Sheet	Total
		1	4

VTAG PROJ. NO.: BRF 0151(21)

MILLER CONSTRUCTION, INC.
 ROUTE 106 BRIDGE REPLACEMENT T.H. 61 (KENDALL ROAD)
 WOODSTOCK, VT

PRECAST RIGID BRIDGE LAYOUT & DETAILS
 Drawing No. R-S22624-L01A
 SHEET 1 OF 4