

HVCTRL #1
389174.4977 N
1634481.8006 E
ELEV: 1005.44'

HVCTRL #2
388828.4329 N
1634244.4975 E
ELEV: 986.75'

HVCTRL #3
388900.4009 N
1634403.6064 E
ELEV: 986.32'

HVCTRL #4
388963.9474 N
1634531.8644 E
ELEV: 974.44'

HVCTRL #5
389092.4860 N
1634665.7851 E
ELEV: 976.31'

ITEM 621.30 - BOX BEAM GUARDRAIL

STA. 2+99 - 3+22, LT.
STA. 3+32 - 3+58, RT.
STA. 4+37 - 4+62, LT.
STA. 4+66 - 4+75, RT.

ITEM 621.51 - MANUFACTURED TERMINAL SECTION, TANGENT (BOX BEAM)

STA. 3+18 - 3+32, RT.
STA. 4+62 - 4+76, LT.

ITEM 621.725 - GUARDRAIL APPROACH SECTION, GALVANIZED 3 RAIL BOX BEAM

STA. 3+22 - 3+54, LT.
STA. 3+58 - 3+89, RT.
STA. 4+04 - 4+37, LT.
STA. 4+35 - 4+66, RT.

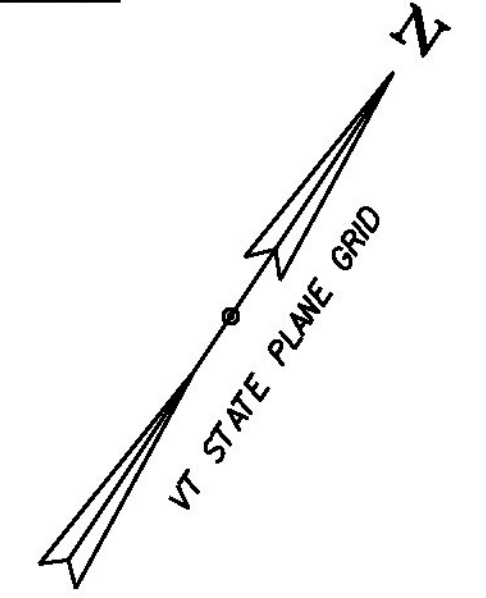
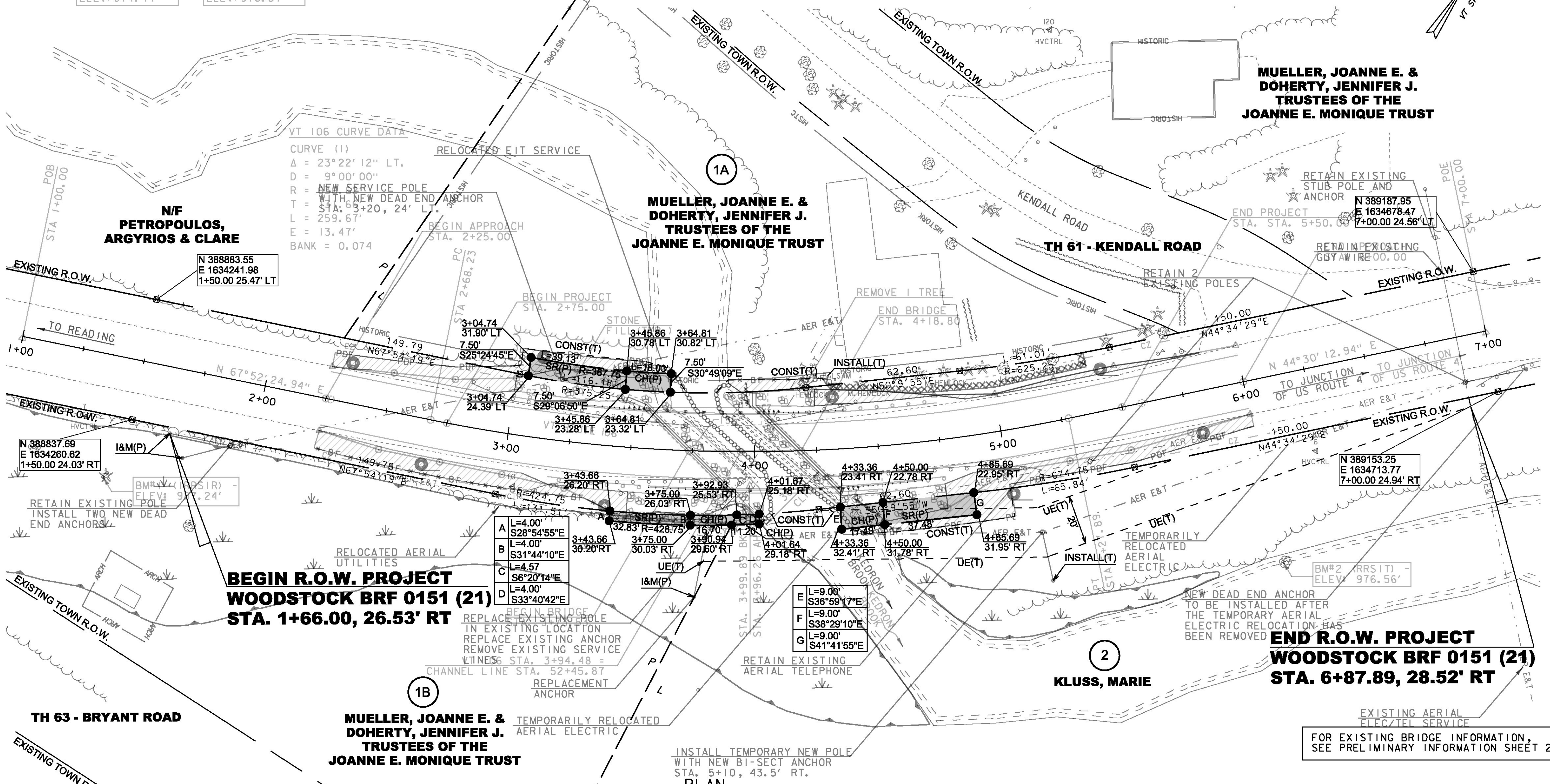
ITEM 210.10 - COLD PLANING, BITUMINOUS PAVEMENT

STA. 2+15 - 2+25
STA. 6+00 - 6+10

ITEM 656.85 - TREE PROTECTION

STA. 4+26 LT. - 5+40, LT.

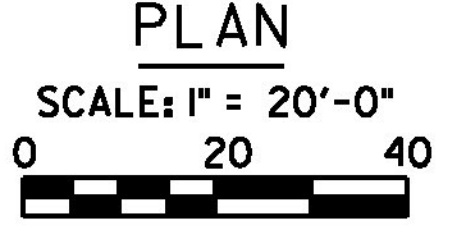
VT 106 CURVE DATA
CURVE (1)
Δ = 23°22'12" LT.
D = 9°00'00"
R = NEW SERVICE POLE WITH NEW DEAD END ANCHOR
T = STA. 3+20, 24' LT.
L = 259.67'
E = 13.47'
BANK = 0.074



A	L=4.00'	S28°54'55"E
B	L=4.00'	S31°44'10"E
C	L=4.57'	S6°20'14"E
D	L=4.00'	S33°40'42"E

E	L=9.00'	S36°59'17"E
F	L=9.00'	S38°29'10"E
G	L=9.00'	S41°41'55"E

INSTALL TEMPORARY NEW POLE WITH NEW BI-SECT ANCHOR
STA. 5+10, 43.5' RT.



FOR EXISTING BRIDGE INFORMATION, SEE PRELIMINARY INFORMATION SHEET 2

LINES SHOWN ON THIS PLAN AS EXISTING PROPERTY LINES P/L ARE BELIEVED TO BE ACCURATE BUT SHOULD NOT BE RELIED UPON FOR PURPOSES UNRELATED TO THE STATE OF VERMONT'S ACQUISITION OF LAND AND RIGHTS FOR THIS PROJECT.

PROJECT NAME:	WOODSTOCK	PLOT DATE:	08-OCT-2014
PROJECT NUMBER:	BRF 015(21)	DRAWN BY:	A. EGIZI
FILE NAME:	r10c426lay.dgn	DESIGNED BY:	STANTEC
PROJECT LEADER:	R. YOUNG	CHECKED BY:	R. CLOUTIER
R.O.W. LAYOUT SHEET 1 OF 1		SHEET	50 OF 50

FOR R.O.W. USE ONLY