

PEDESTAL 2 FOUNDATION PLAN & PILE LAYOUT

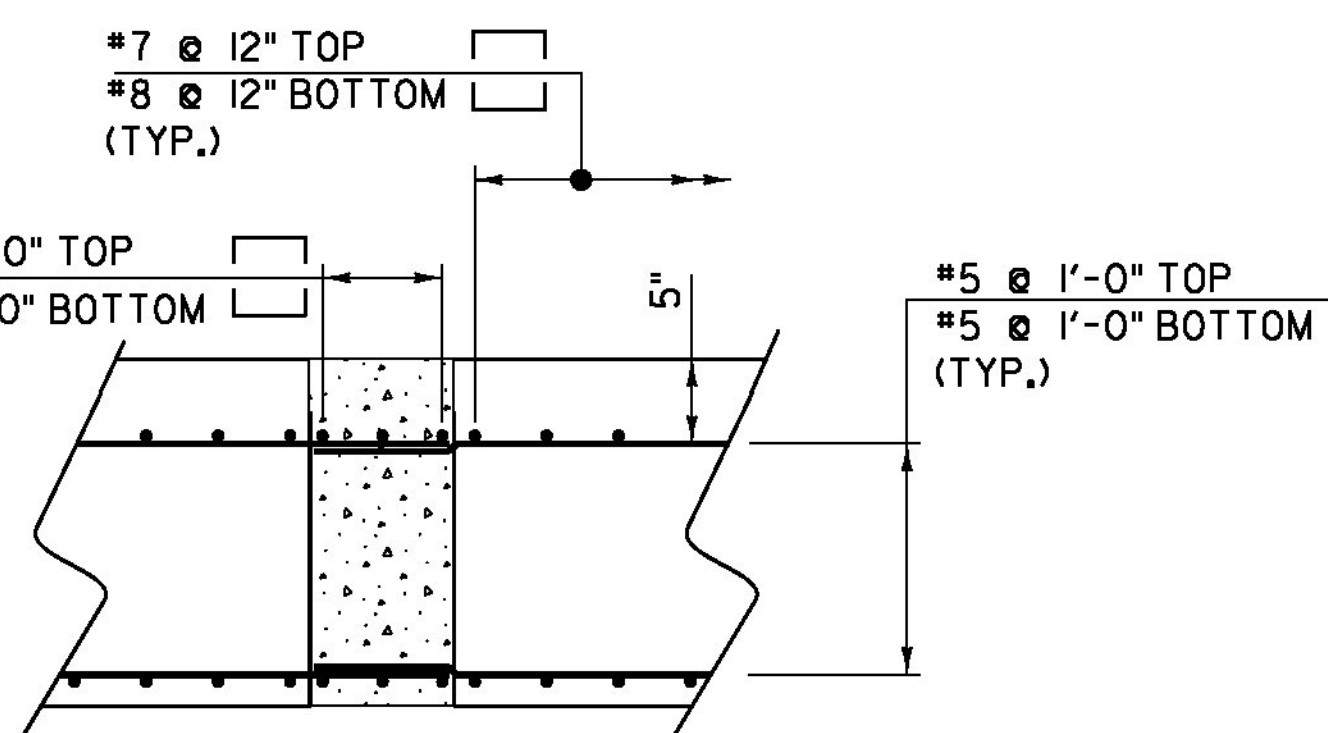
SCALE 3/8" = 1'-0"

LEGEND

- P2-XX VERTICAL MICROPILE
- ◐ P2-XX MICROPILE BATTERED 1 HORIZ. TO 10 VERT.
- ▨ SPECIAL PROVISION (HIGH PERFORMANCE CONCRETE, RAPID SET)(FPQ)

NOTES:

1. REINFORCEMENT IS TO BE CONTINUOUS THROUGH THE BLOCKOUTS. THE DESIGN ALLOWS FOR ONE BAR IN EACH DIRECTION OF THE BOTTOM MAT OF REINFORCEMENT TO BE CUT IN THE FIELD IF THE BAR INTERFERES WITH THE PILE HEAD.
2. CENTER OF PILES GIVEN AT BOTTOM OF FOOTING.
3. REINFORCEMENT IN CLOSURE POURS BETWEEN PRECAST UNITS WILL BE PAID UNDER ITEM 507.11, REINFORCING STEEL, LEVEL 1 (FPQ).
4. FOR SECTIONS A-A AND B-B & D-D REFER TO SHEET 32.



SECTION C-C

NOT TO SCALE

* SEE NOTE 3, THIS SHEET.

PROJECT NAME:	WOODSTOCK
PROJECT NUMBER:	BRF 015(21)
FILE NAME:	z10c426ped2.ftg pl.dgn
PROJECT LEADER:	G. BOGUE
DESIGNED BY:	N. TIRK
PEDESTAL 2 FOOTING PLAN & PILE LAYOUT SHEET	31 OF 50
PLOT DATE:	9/25/2015
DRAWN BY:	L. BUXTON
CHECKED BY:	T. KNIGHT

