

GPS CONTROL POINTS

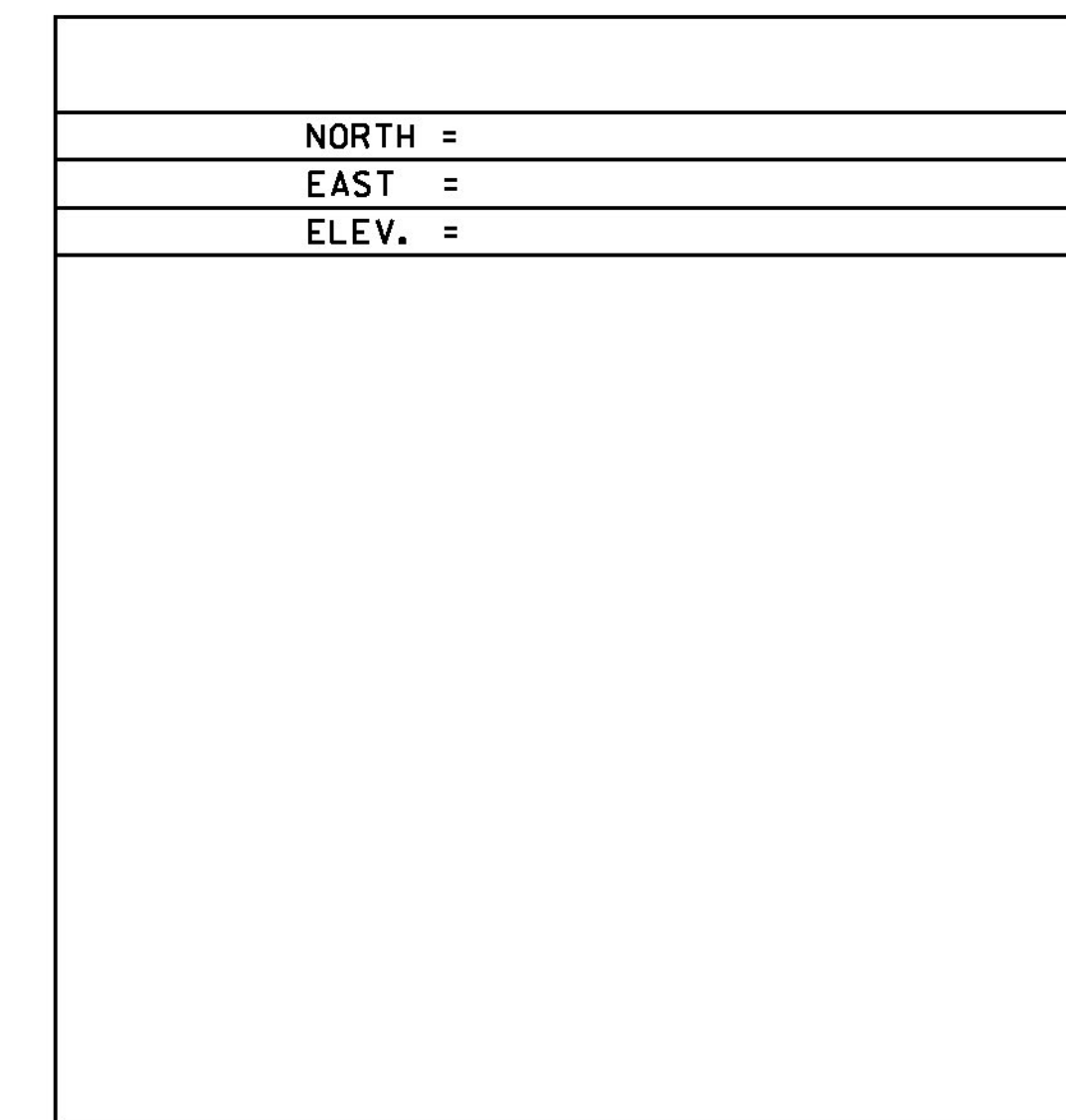
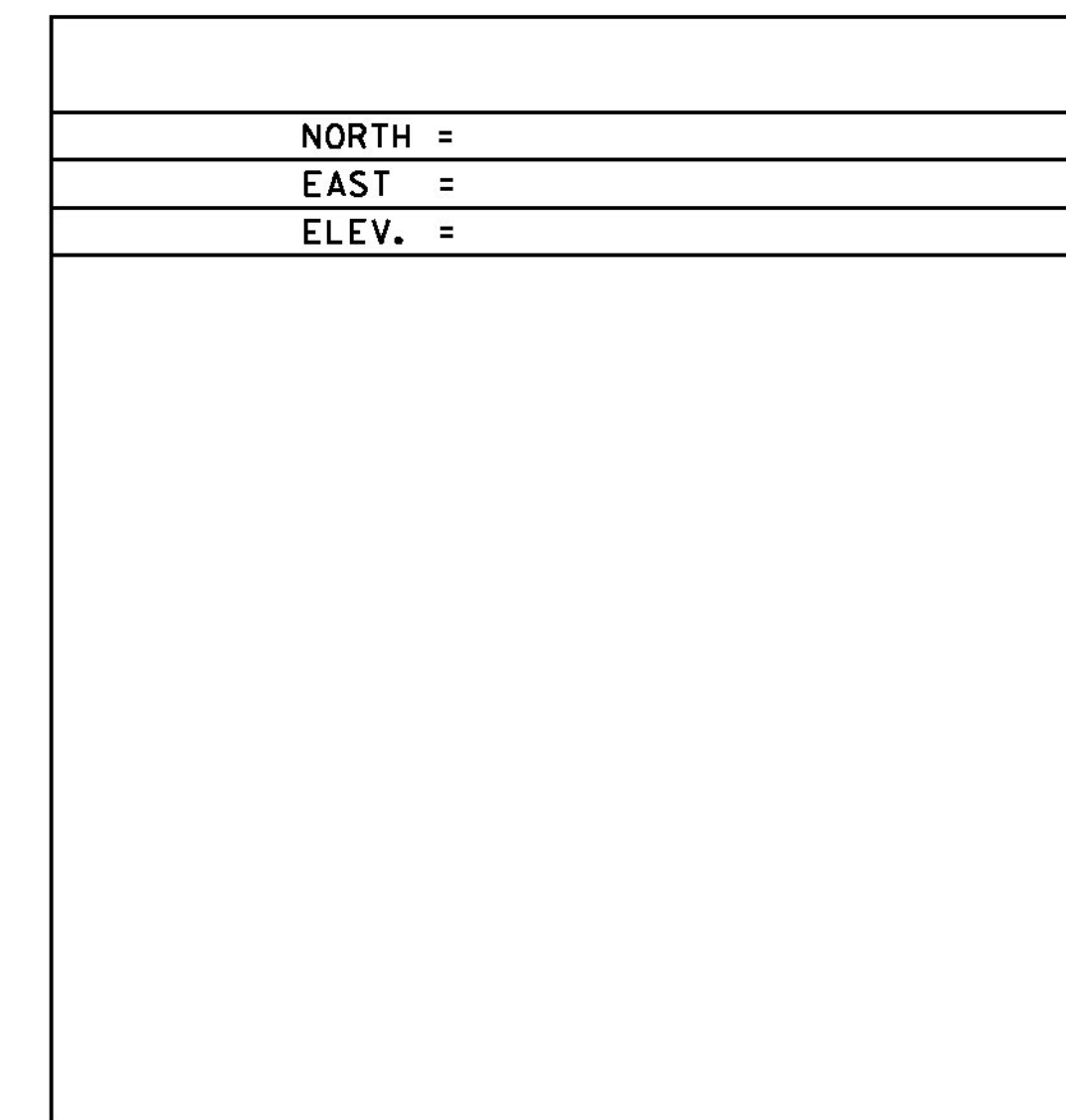
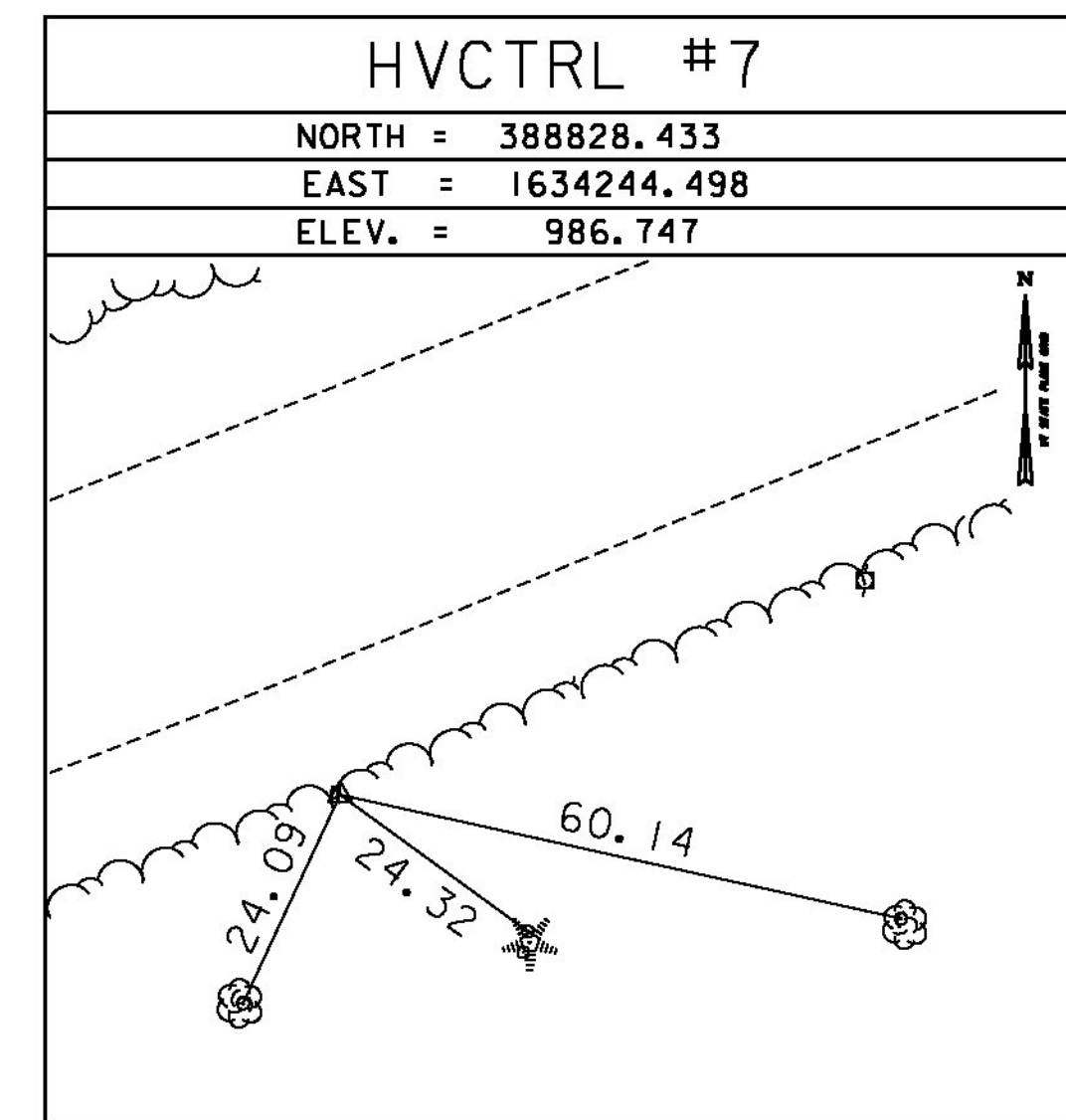
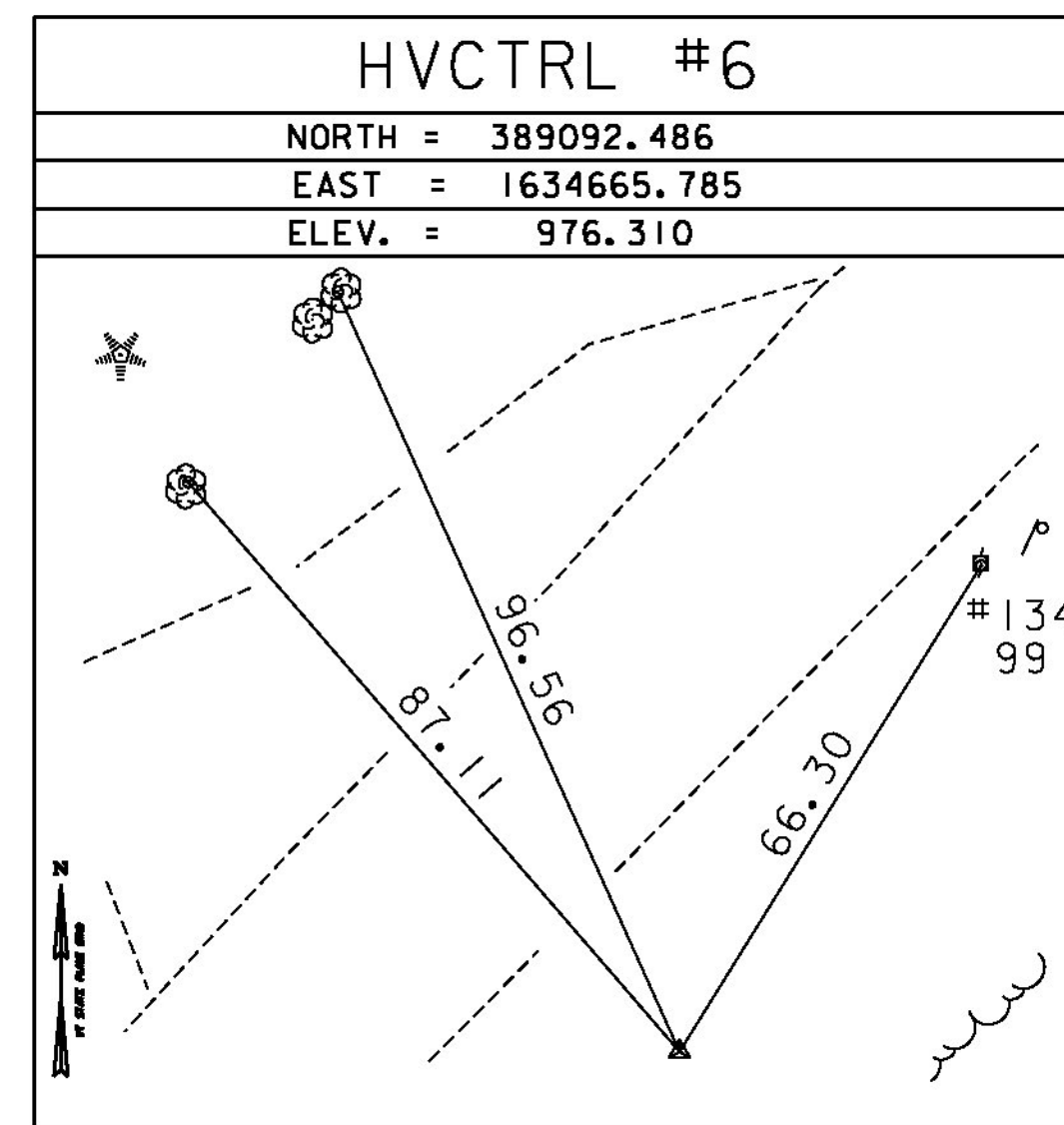
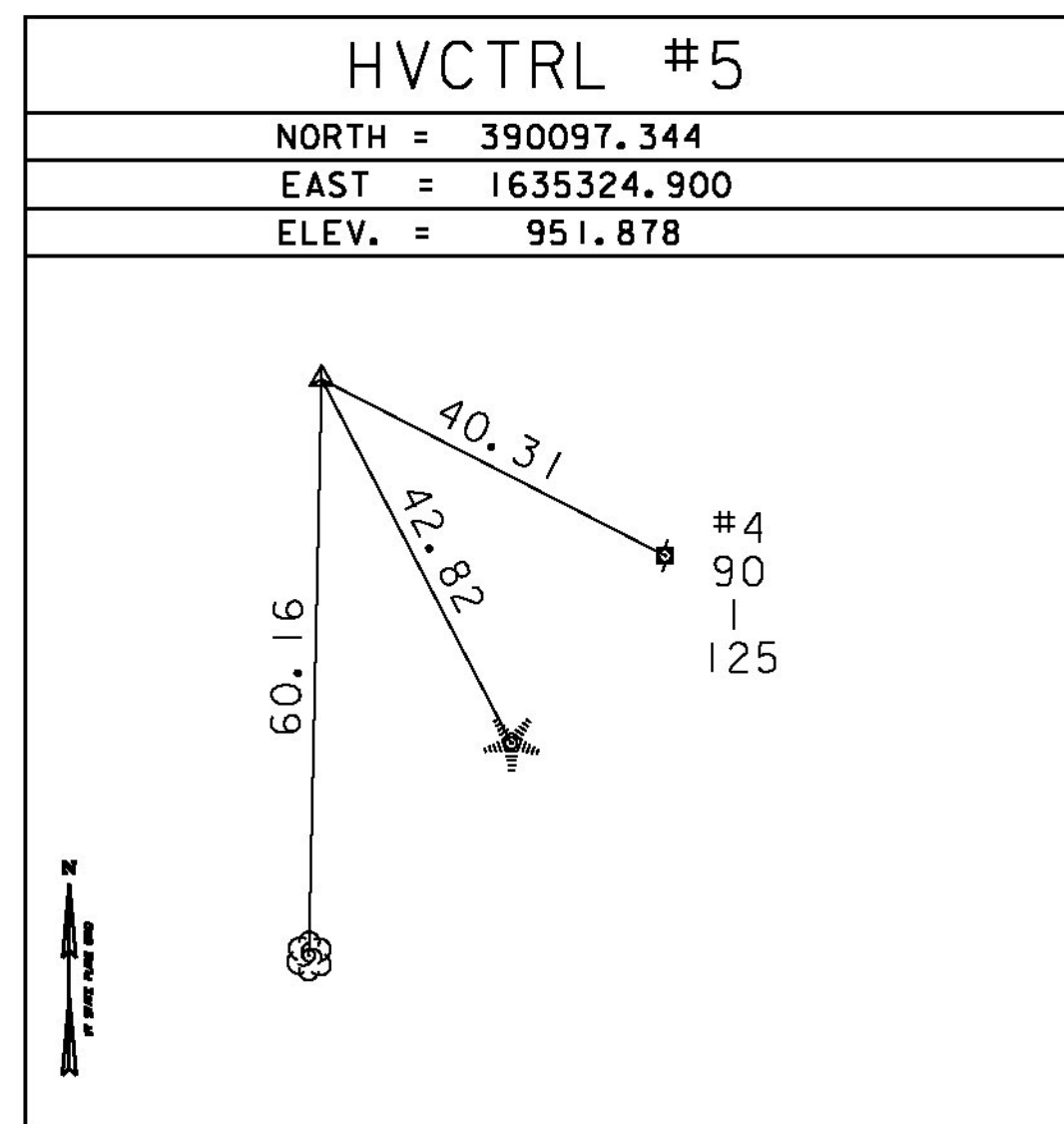
HVCTRL #1
 KEDRON AZ MK
 NORTH = 392626.055
 EAST = 1636526.218
 ELEV. = 855.969

HVCTRL #2
 KEDRON
 NORTH = 390970.727
 EAST = 1636074.631
 ELEV. = 902.557

GENERAL LOCATION, WOODSTOCK, VT. TO REACH FROM THE INTERSECTION OF VT ROUTE 106 AND U.S. ROUTE 4 IN WOODSTOCK, GO SOUTH ALONG ROUTE 106 FOR 3.35 MILES (5.39 KM) TO THE MARK ON THE LEFT, SET IN THE TOP OF THE CONCRETE ABUTMENT AT THE SOUTHEAST CORNER OF THE BRIDGE OVER THE KEDRON BROOK. THE MARK IS 5.55 M (18.21 FT) EAST OF THE CENTERLINE OF ROUTE 106, 3.5 M (11.5 FT) SOUTHWEST OF THE END OF THE WINGWALL, 0.45 M (1.48 FT) NORTHWEST OF THE SOUTHEAST FACE OF THE ABUTMENT, 0.2 M (0.7 FT) SOUTHEAST OF THE NORTHWEST FACE OF THE ABUTMENT, AND 0.85 M (2.79 FT) NORTH OF A FIBERGLASS WITNESS POST.

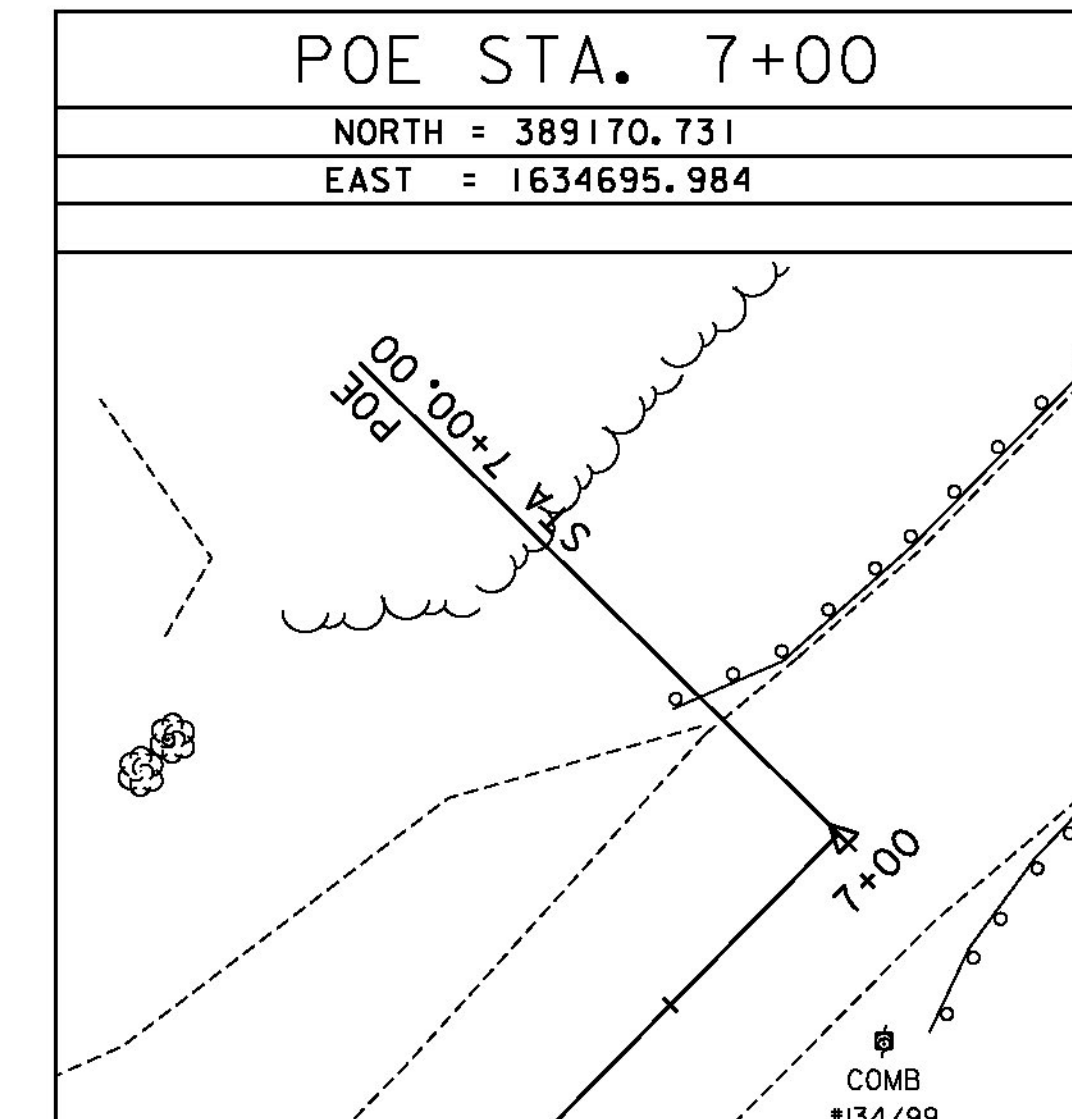
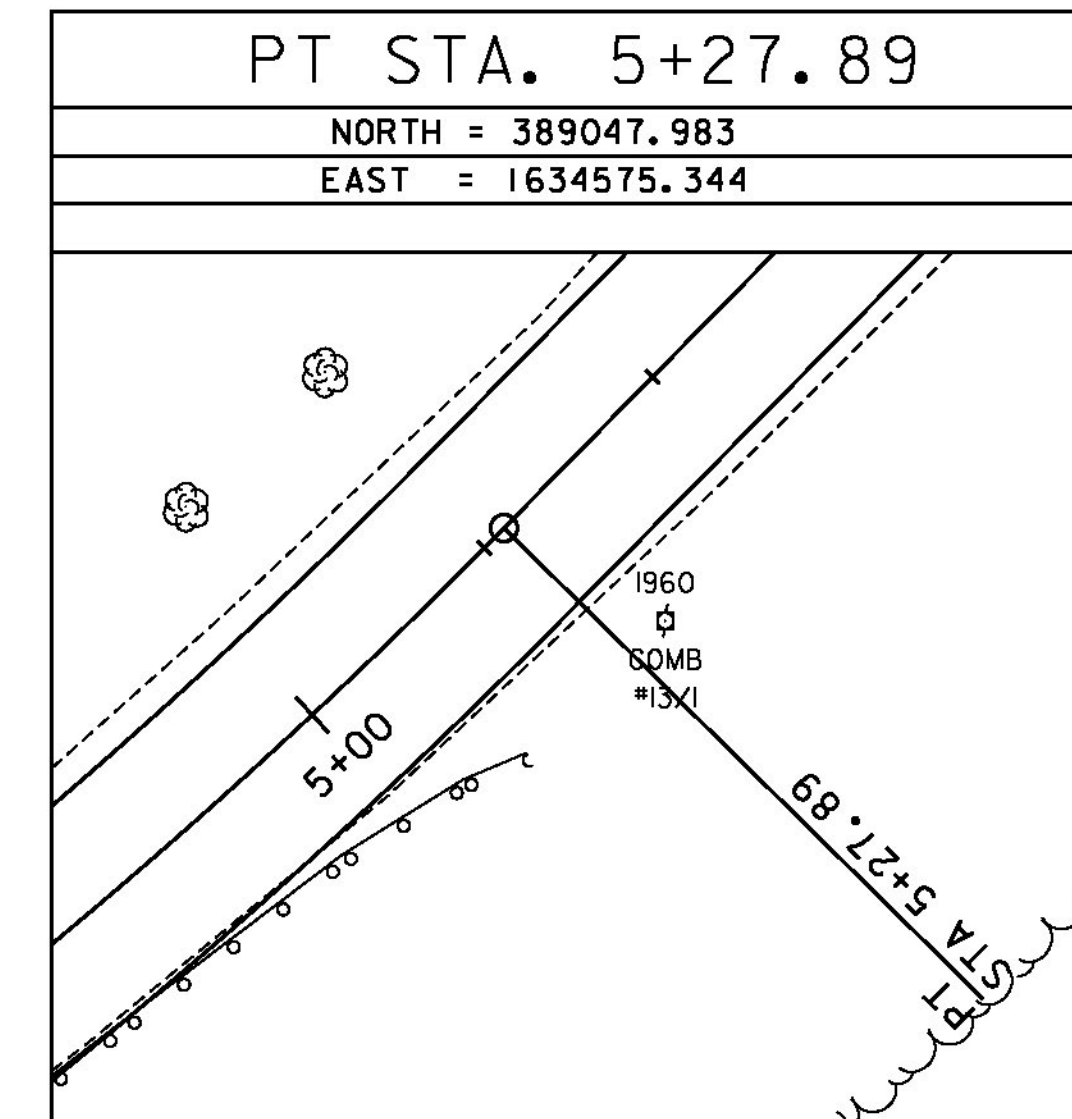
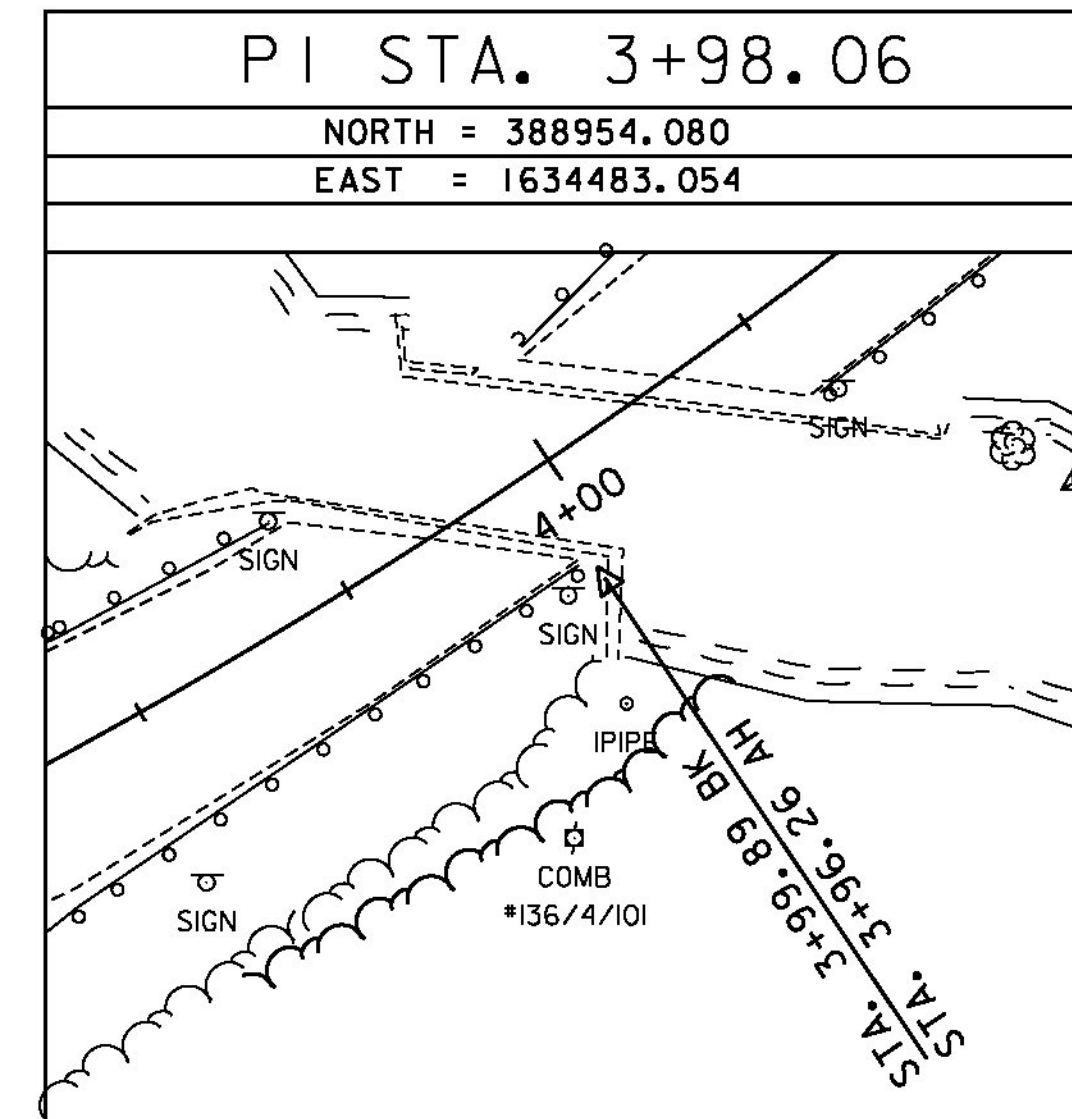
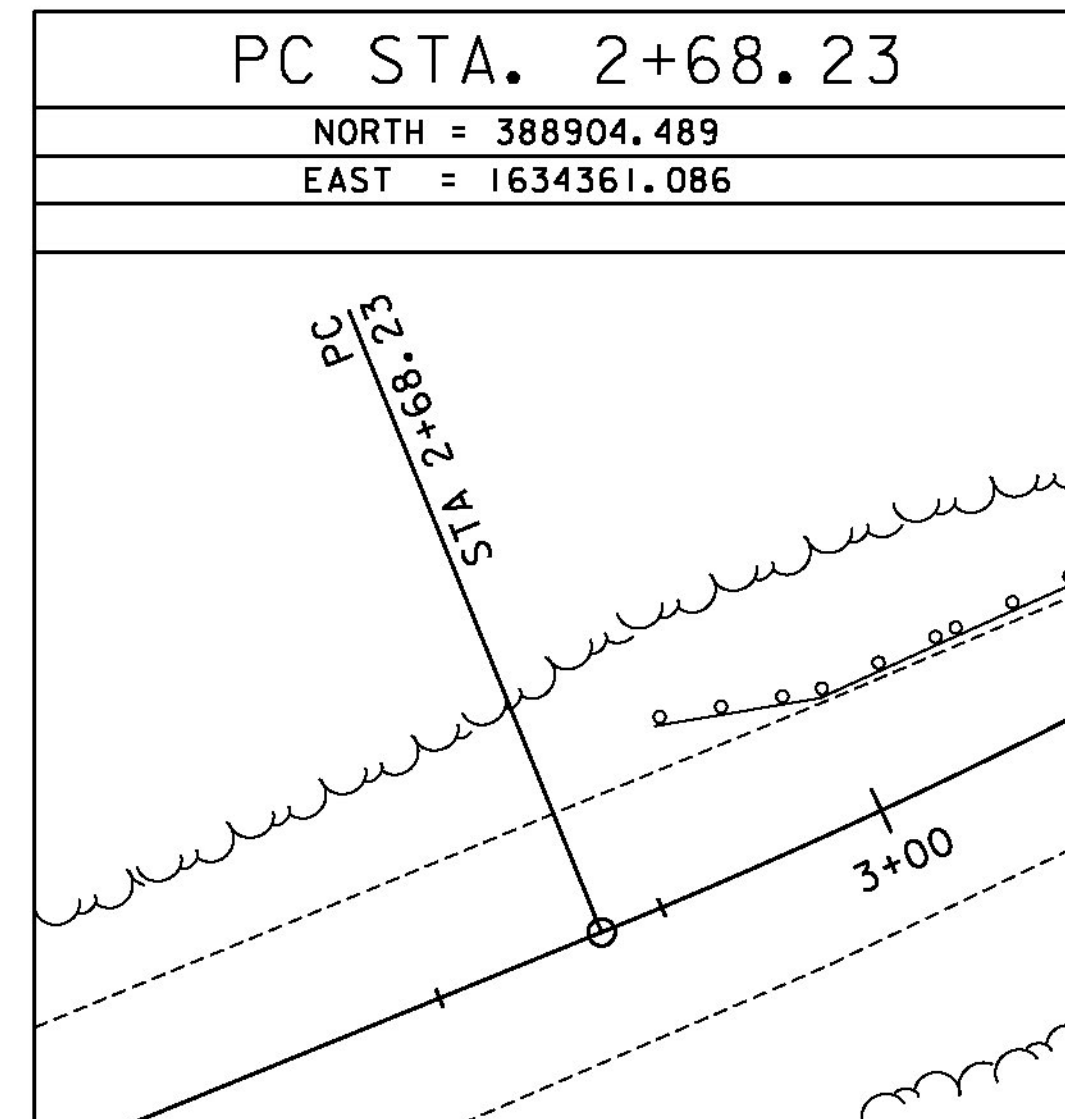
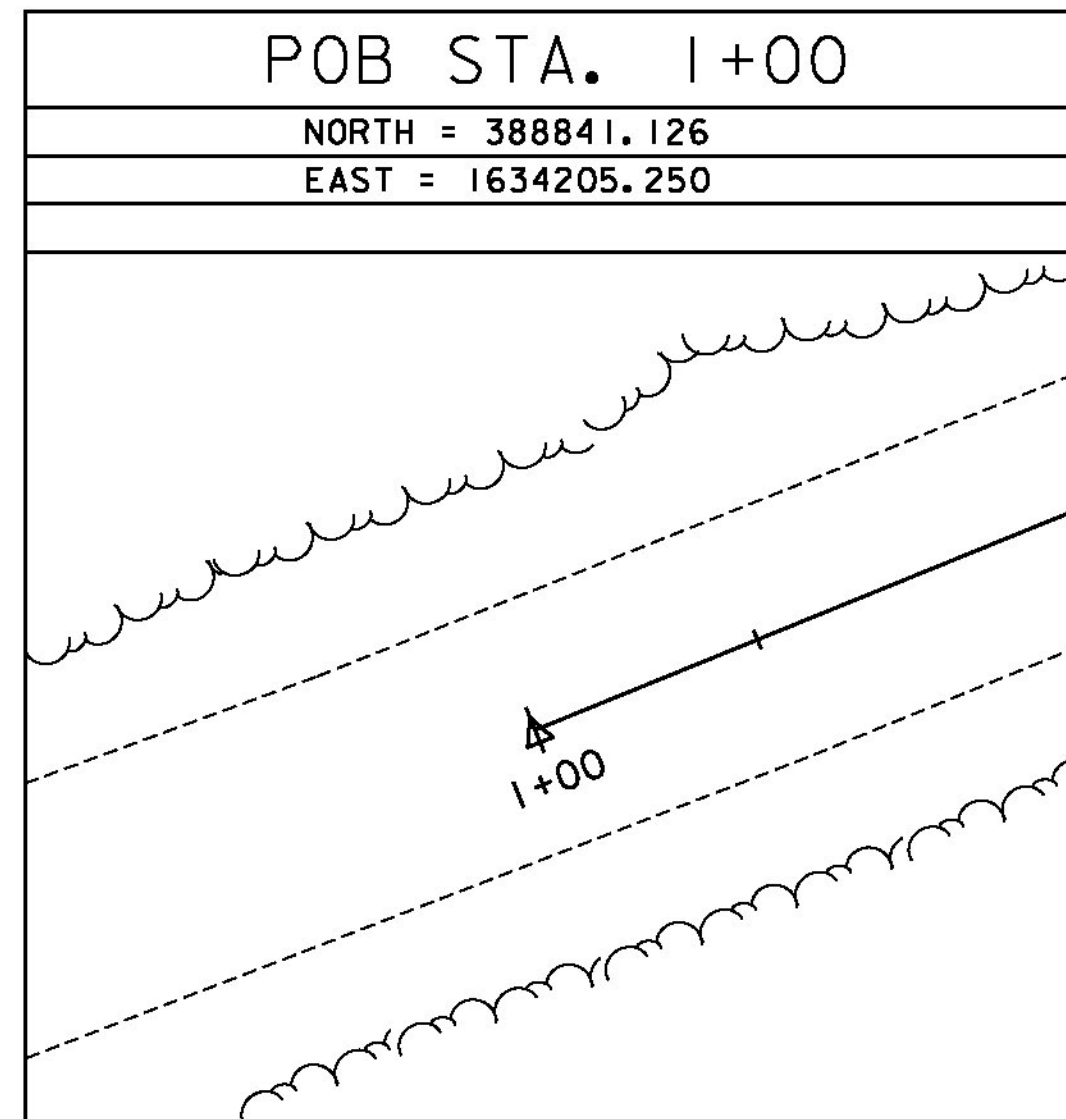
GENERAL LOCATION, WOODSTOCK, VT. TO REACH FROM THE INTERSECTION OF VT ROUTE 106 AND U.S. ROUTE 4 IN WOODSTOCK, GO SOUTH ALONG ROUTE 106 FOR 3.6 MILES (5.8 KM) TO THE MARK ON THE RIGHT. THE MARK IS A FENO MONUMENT SET FLUSH WITH GROUND SURFACE. IT IS 37.8 M (124.0 FT) SOUTH OF POLE NO. 81/116, 15.3 M (50.2 FT) NORTH OF POLE NO. 117/82, 0.8 M (2.6 FT) WEST OF AND ABOUT 0.4 M (1.3 FT) LOWER THAN THE WEST EDGE OF PAVEMENT OF ROUTE 106, AND 0.6 M (2.0 FT) EAST OF THE NORTHEAST CORNER OF A CONCRETE HEADWALL AND A FIBERGLASS WITNESS POST.

TRAVERSE TIES



* MAIN TRAVERSE COMPLETED 12/30/1998 BY R. GILMAN P.C. & T. COMPANION

ALIGNMENT TIES



DATUM	
VERTICAL	NAVD 88
HORIZONTAL	NAD 83 (92)
ADJUSTMENT	COMPASS



PROJECT NAME:	WOODSTOCK
PROJECT NUMBER:	BRF 015(21)
FILE NAME:	z10c426t1e.dgn
PROJECT LEADER:	G. BOGUE
DESIGNED BY:	VTRANS
SURVEY CONTROL AND TIES	
PLOT DATE:	9/2/2015
DRAWN BY:	VTRANS
CHECKED BY:	VTRANS
SHEET	9 OF 50