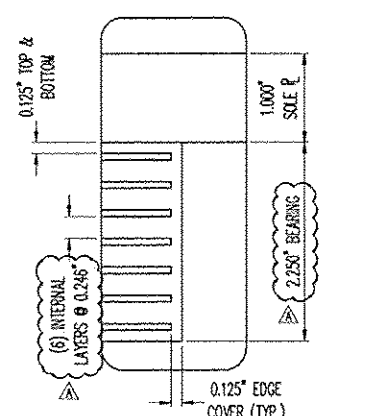


ANCHOR ROD DETAIL



DETAIL 'A'

LOAD TABLE	
LIVE LOAD (KIPS)	60.0
DEAD LOAD (KIPS)	20.0

NO	QTY	DESCRIPTION	MATERIAL	LENGTH	REMARKS
1A	6	ELASTOMERIC BEARING			
1a1	6	7.250" DIA. BOLLING	NATURAL RUBBER		50-7.5 DIA. BOLLING
1a2	6	14 GA. X 18.750"			WALDOES BOLTING 14 & 12 P/B
1a3	6	1.000" X 18.000"			PLATE
1B	12	ANCHOR ROD	A307 OR A307 (A193)	12.000"	WITH-HDC (WELD)
1C	12	WASHER PLATE			
1d1	12	1/2" DIA. X 1.000"	A307 OR A307 (A193)	1.000"	1/2" DIA. X 1.000"
1d2	12	1/2" DIA. X 1.000"	A307 OR A307 (A193)	1.000"	1/2" DIA. X 1.000"
1d3	12	1/2" DIA. X 1.000"	A307 OR A307 (A193)	1.000"	1/2" DIA. X 1.000"
1d4	12	1/2" DIA. X 1.000"	A307 OR A307 (A193)	1.000"	1/2" DIA. X 1.000"
1d5	12	1/2" DIA. X 1.000"	A307 OR A307 (A193)	1.000"	1/2" DIA. X 1.000"
1d6	12	1/2" DIA. X 1.000"	A307 OR A307 (A193)	1.000"	1/2" DIA. X 1.000"
1d7	12	1/2" DIA. X 1.000"	A307 OR A307 (A193)	1.000"	1/2" DIA. X 1.000"
1d8	12	1/2" DIA. X 1.000"	A307 OR A307 (A193)	1.000"	1/2" DIA. X 1.000"
1d9	12	1/2" DIA. X 1.000"	A307 OR A307 (A193)	1.000"	1/2" DIA. X 1.000"
1d10	12	1/2" DIA. X 1.000"	A307 OR A307 (A193)	1.000"	1/2" DIA. X 1.000"
1d11	12	1/2" DIA. X 1.000"	A307 OR A307 (A193)	1.000"	1/2" DIA. X 1.000"
1d12	12	1/2" DIA. X 1.000"	A307 OR A307 (A193)	1.000"	1/2" DIA. X 1.000"

SEE SH. 011 FOR GENERAL NOTES.

NO.	REV.	DESCRIPTION	DATE	BY	CHK'D BY
1		REV. BIDD. HEIGHT FROM 1.25 TO 2.25, BRC MATERIAL, & ANCHOR ROD	10/7/2011	BA	ANK
2		REV. BIDD. HEIGHT FROM 1.25 TO 2.25, BRC MATERIAL, & ANCHOR ROD	10/7/2011	BA	ANK

ITEM	QUANTITY
LOCATION - BIDE VT OR BROOK AS MESHIE OF GRANITE/ROCKERY TOWN	34574-1104-1 0 OF 0
BRIDGE - 15	
PROJECT NO. - SHF 0827(8)	
PROJECT NAME - ROADWAY	
DESIGNER - VT DOT	
CUSTOMER - LUCK BROS. INC.	

NO.	REV.	DATE	BY	CHK'D BY
1		10/13/2011	RSY	ANK

VERSIFLEX ELASTOMERIC BEARING
WASHINGTON CO., VT

N.T.S. 34574 1104 1 01

RECEIVED
OCT 12 2011
RESUBMIT APPROVED
BY RSY DATE 10/13/2011

