

STEEL BEAM GUARDRAIL, GALVANIZED
 VT 12A STA 2+40.0 - 3+65.0 LT (CONNECT TO EXISTING GR @ 3+65 LT)
 VT 12A STA 2+10.0 - 3+35.0 RT (CONNECT TO EXISTING GR @ 2+10 & 3+33 RT)

ANCHOR FOR STEEL BEAM RAIL
 VT 12A STA 2+40.0 LT

REMOVAL AND DISPOSAL OF GUARDRAIL
 VT 12A STA 2+10.0 - 2+19.0 RT
 VT 12A STA 3+35.0 - 3+65.0 LT

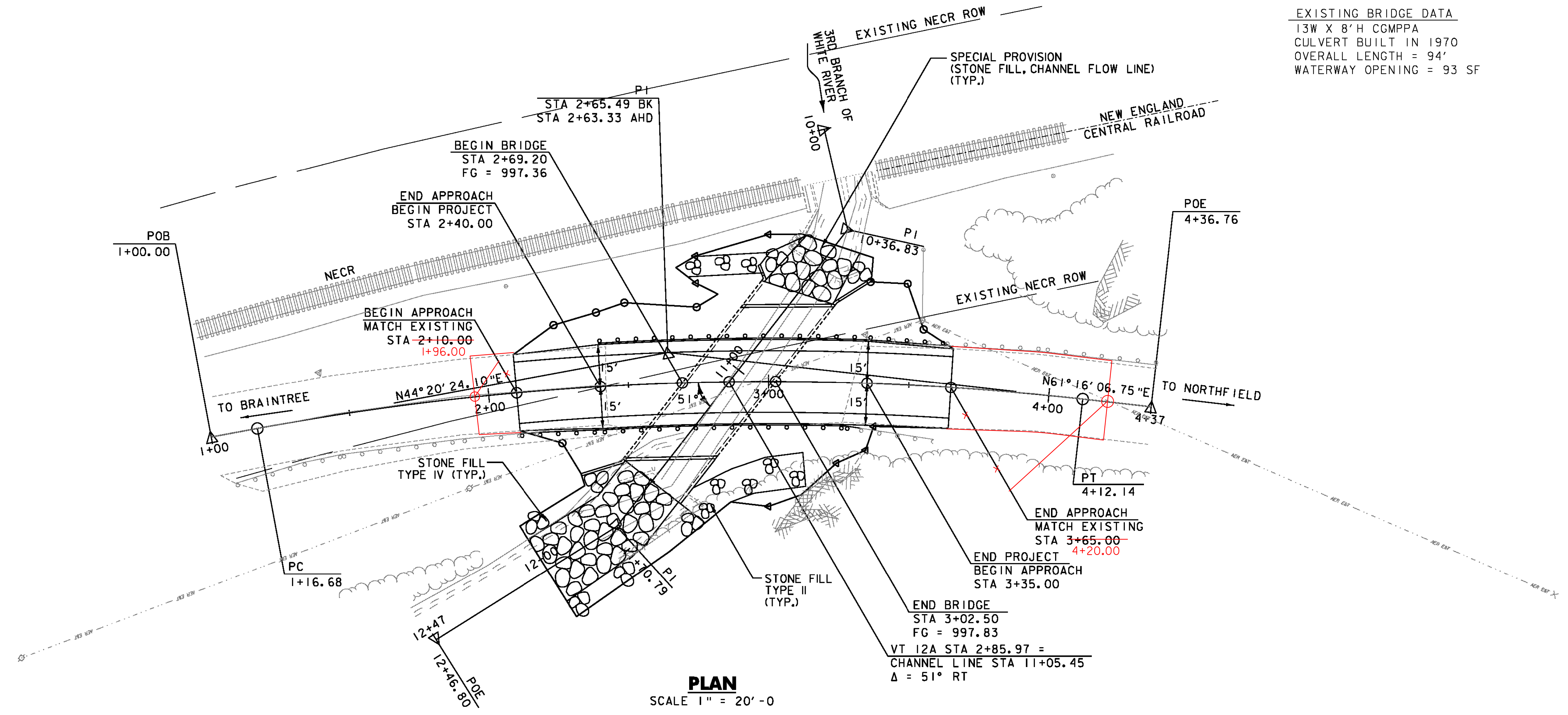
4 INCH WHITE LINE
 VT 12A STA 2+10.0 - 3+65.0, 11' LT
 VT 12A STA 2+10.0 - 3+65.0, 11' RT

4 INCH YELLOW LINE
 VT 12A STA 2+10.0 - 3+65.0 C

CURVE DATA VT 12A
 $\Delta = 16^\circ 55' 42.65''$ RT.
 $D = 5^\circ 43' 46.48''$
 $R = 1000.00'$
 $T = 148.81'$
 $L = 295.46'$
 $E = 11.01'$
 MAX. BANK = 0.059

SPECIAL PROVISION (STONE FILL, CHANNEL FLOW LINE)
 CHANNEL LINE STA ~~10+65.29~~ - ~~11+50.44~~
 10+60.25 11+50.00

EXISTING BRIDGE DATA
 13W X 8'H CMPPA
 CULVERT BUILT IN 1970
 OVERALL LENGTH = 94'
 WATERWAY OPENING = 93 SF



PLAN
 SCALE 1" = 20'-0"

NOTE: AERIAL UTILITY LINES HAVE BEEN RELOCATED, CONTRACTOR SHALL CONFIRM IN FILED

PROJECT NAME:	ROXBURY
PROJECT NUMBER:	ER 0187(9)
FILE NAME:	...drawing\plot files\Layout.dgn
PLOT DATE:	9/21/2011
PROJECT LEADER:	G. BOGUE
DRAWN BY:	JTS/ISM
DESIGNED BY:	M. CHENETTE
CHECKED BY:	G. BOGUE
LAYOUT PLAN	SHEET 45 OF 54

