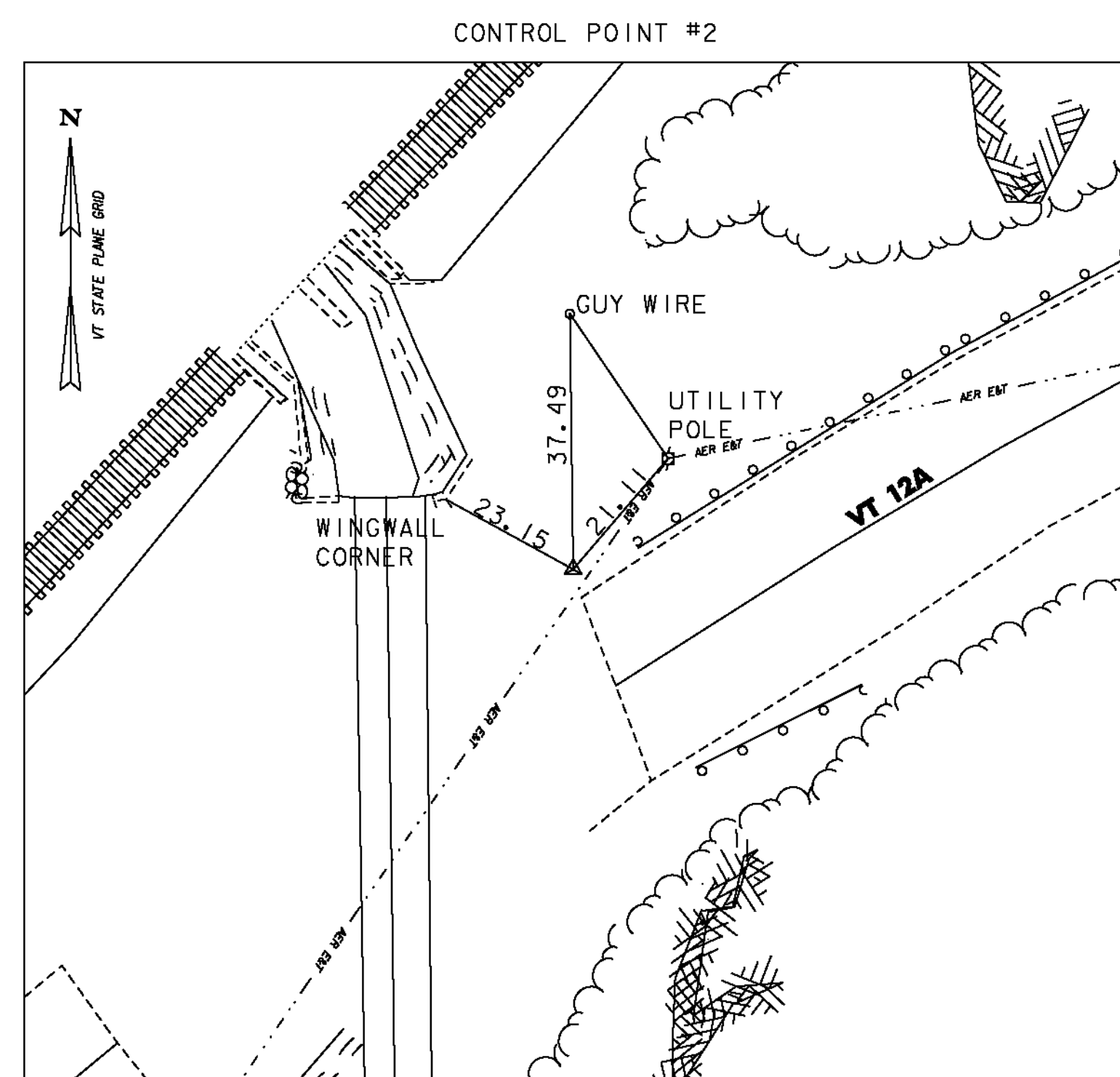
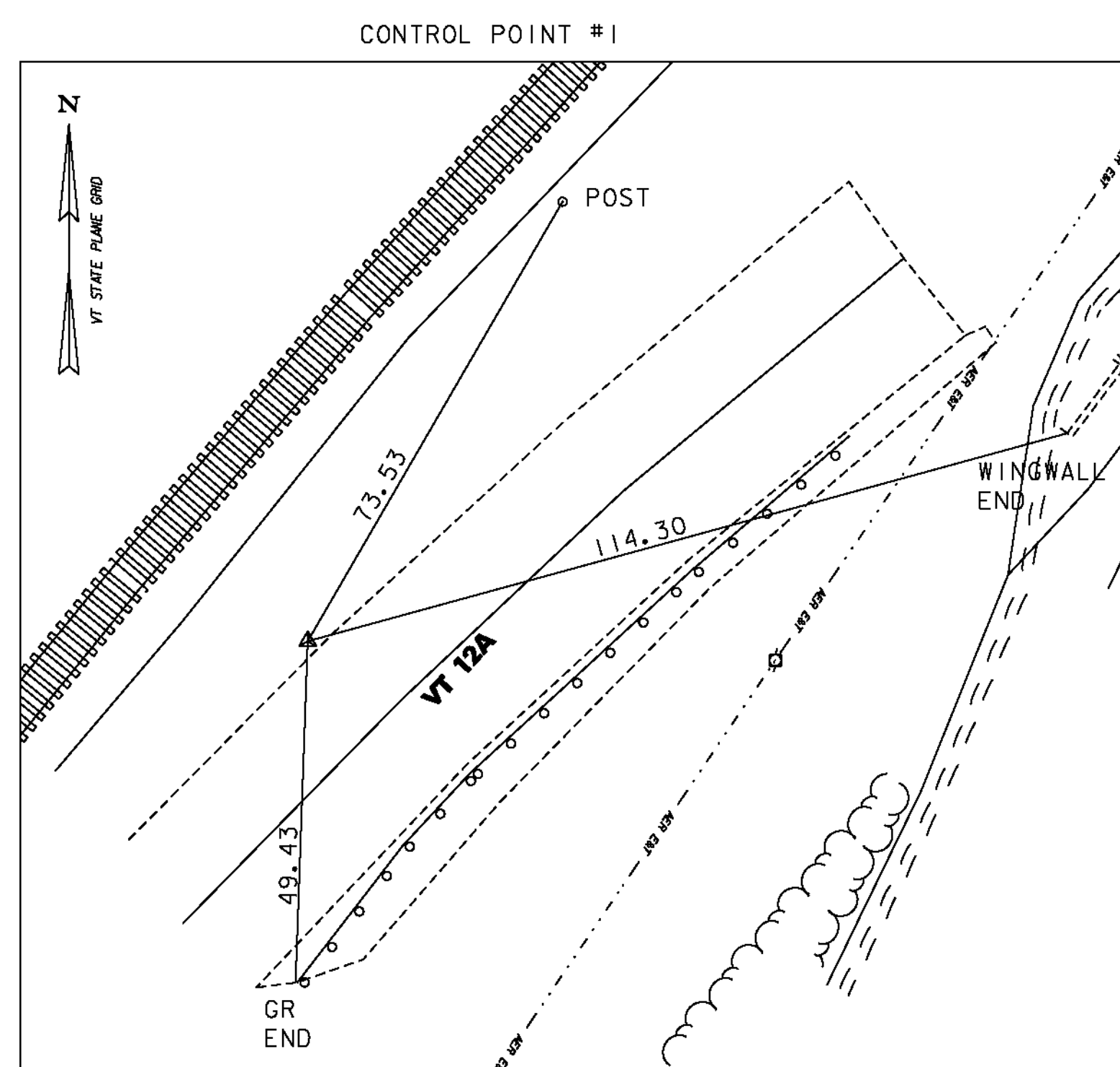


GPS CONTROL POINTS

TRAVERSE TIES

ALIGNMENT DATA



CONTROL POINTS					
POINT	NORTHING	EASTING	STATION	OFFSET	ELEVATION
1	574071.21'	1576271.32'	1+41.42	15.93' LT	996.54'
2	574194.48'	1576422.89'	3+33.89	17.27' LT	998.98'

VERMONT 12A			
	STATION	NORTHING	EASTING
POB	1+00.00	574030.3883	1576253.2640
PC	1+16.68	574042.3200	1576264.9240
Tangent Direction: N 44°20'24.10" E			
Tangent Length: 16.68			
PC	1+16.68	574042.3200	1576264.9240
PI	2+65.50	574148.7520	1576368.9318
CC		573343.4049	1576980.1286
PT	4+12.14	574220.2873	1576499.4236
Radius: 1000.00			
Delta: 16°55'42.65" Right			
Degree of Curvature (Arc): 5°43'46.48"			
Length: 295.46			
Tangent: 148.81			
Chord: 294.38			
Middle Ordinate: 10.89			
External: 11.01			
PT	4+12.14	574220.2873	1576499.4236
POE	4+36.76	574232.1209	1576521.0099
Tangent Direction: N 61°16'06.75" E			
Tangent Length: 24.62			

CHANNEL FLOW LINE			
	STATION	NORTHING	EASTING
POB	10+00.00	574245.9278	1576368.7157
PI	10+36.83	574221.3756	1576396.1654
Tangent Direction: S 48°11'21.34" E			
Tangent Length: 36.83			
PI	10+36.83	574221.3756	1576396.1654
PI	11+70.79	574087.5645	1576389.7923
Tangent Direction: S 2°43'36.44" W			
Tangent Length: 133.96			
PI	11+70.79	574087.5645	1576389.7923
PO	12+46.80	574017.4729	1576360.3920
Tangent Direction: S 22°45'21.15" W			
Tangent Length: 76.01			

DATUM
 VERTICAL NAVD 88
 HORIZONTAL NAD 83 (1996)
 ADJUSTMENT none



PROJECT NAME: ROXBURY
 PROJECT NUMBER: ER 0187(9)
 FILE NAME: ...drawing\plotfiles\tie.dgn PLOT DATE: 9/21/2011
 PROJECT LEADER: G. BOGUE DRAWN BY: JTS/ISM
 DESIGNED BY: M. CHENETTE CHECKED BY: G. BOGUE
TIE SHEET SHEET 43 OF 54