

GPS CONTROL POINTS

**HVCTRL #1**

ROXRIM  
 NORTH = 559539.567  
 EAST = 1573126.562  
 ELEV. = 890.320

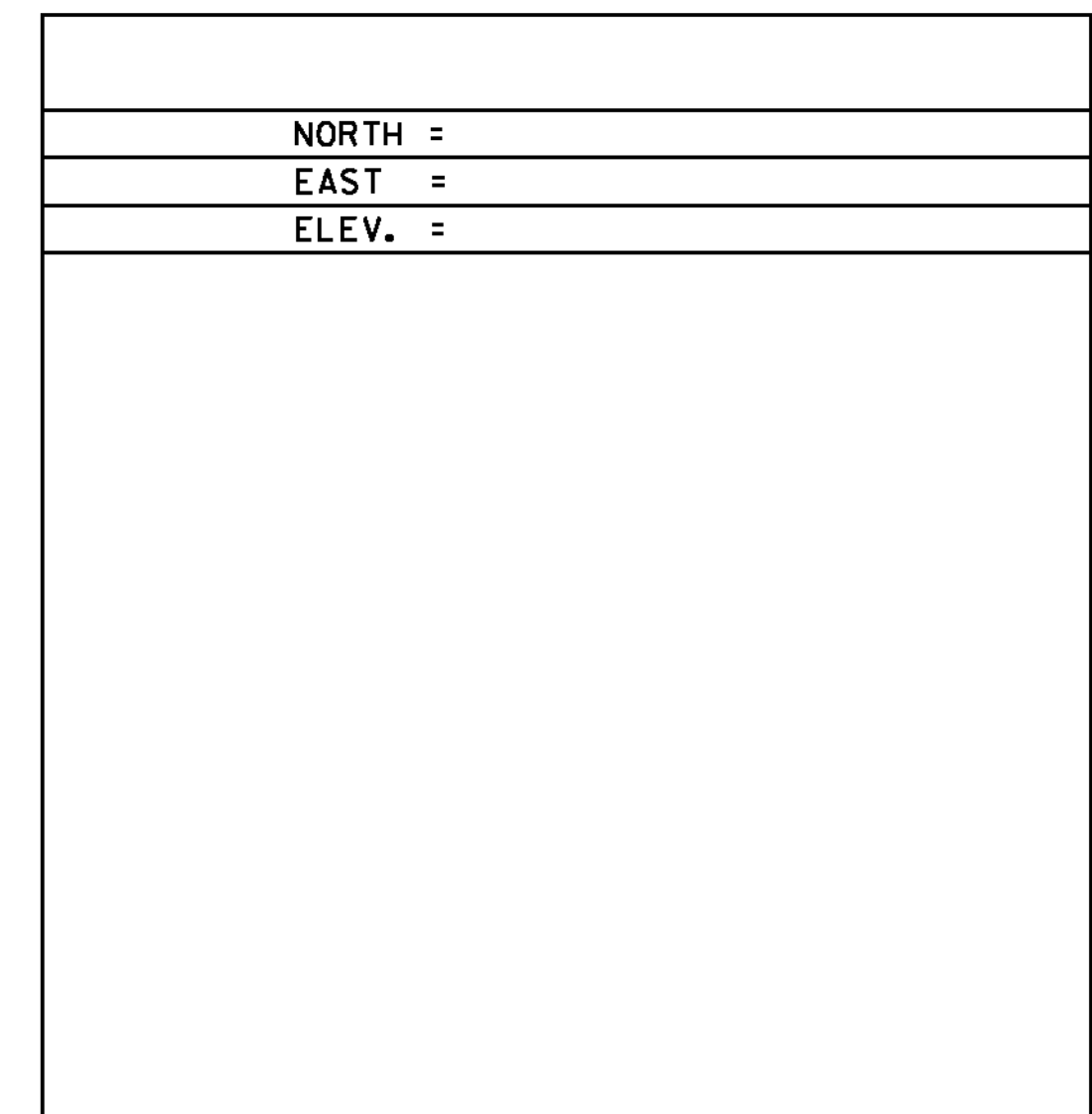
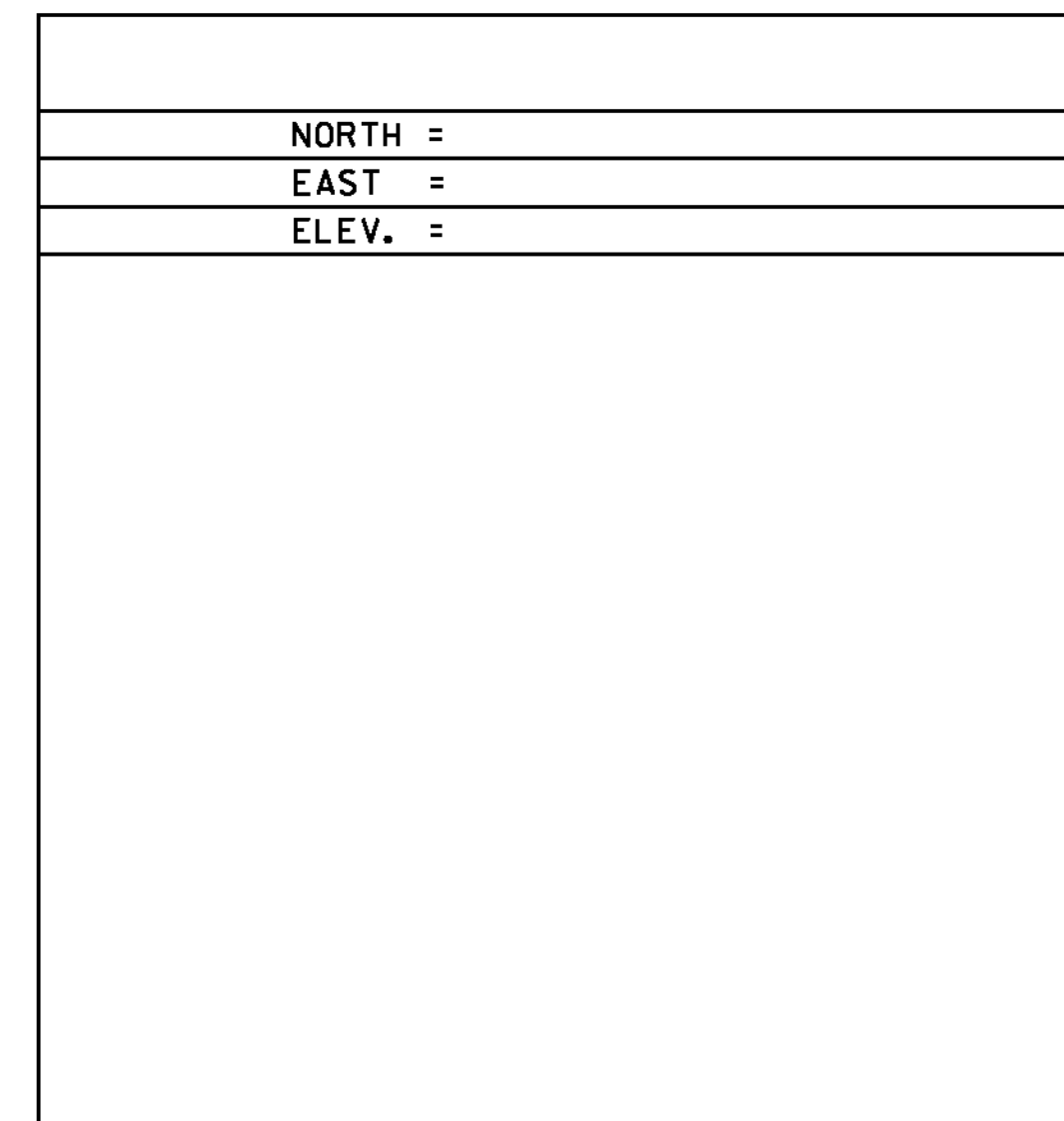
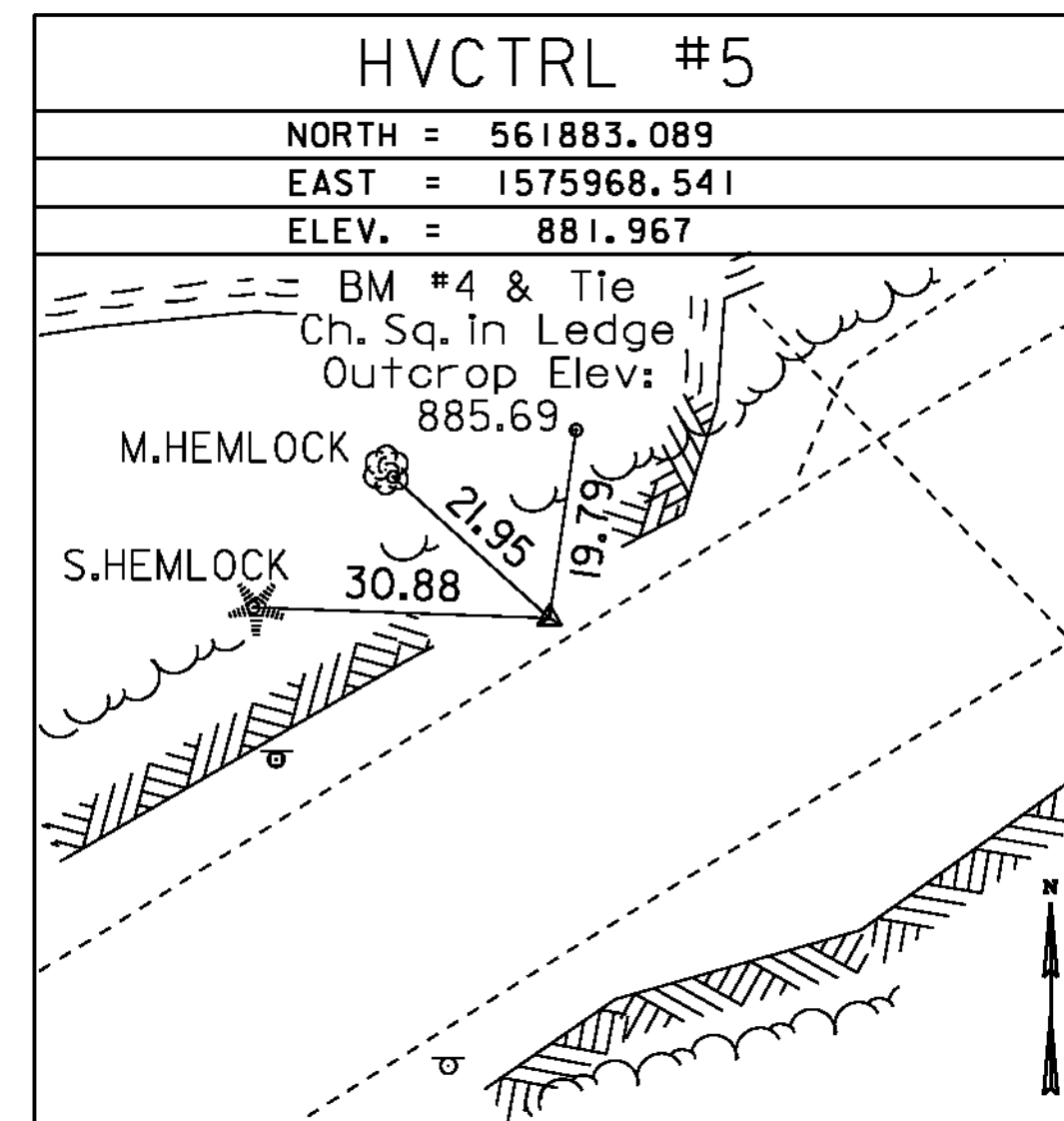
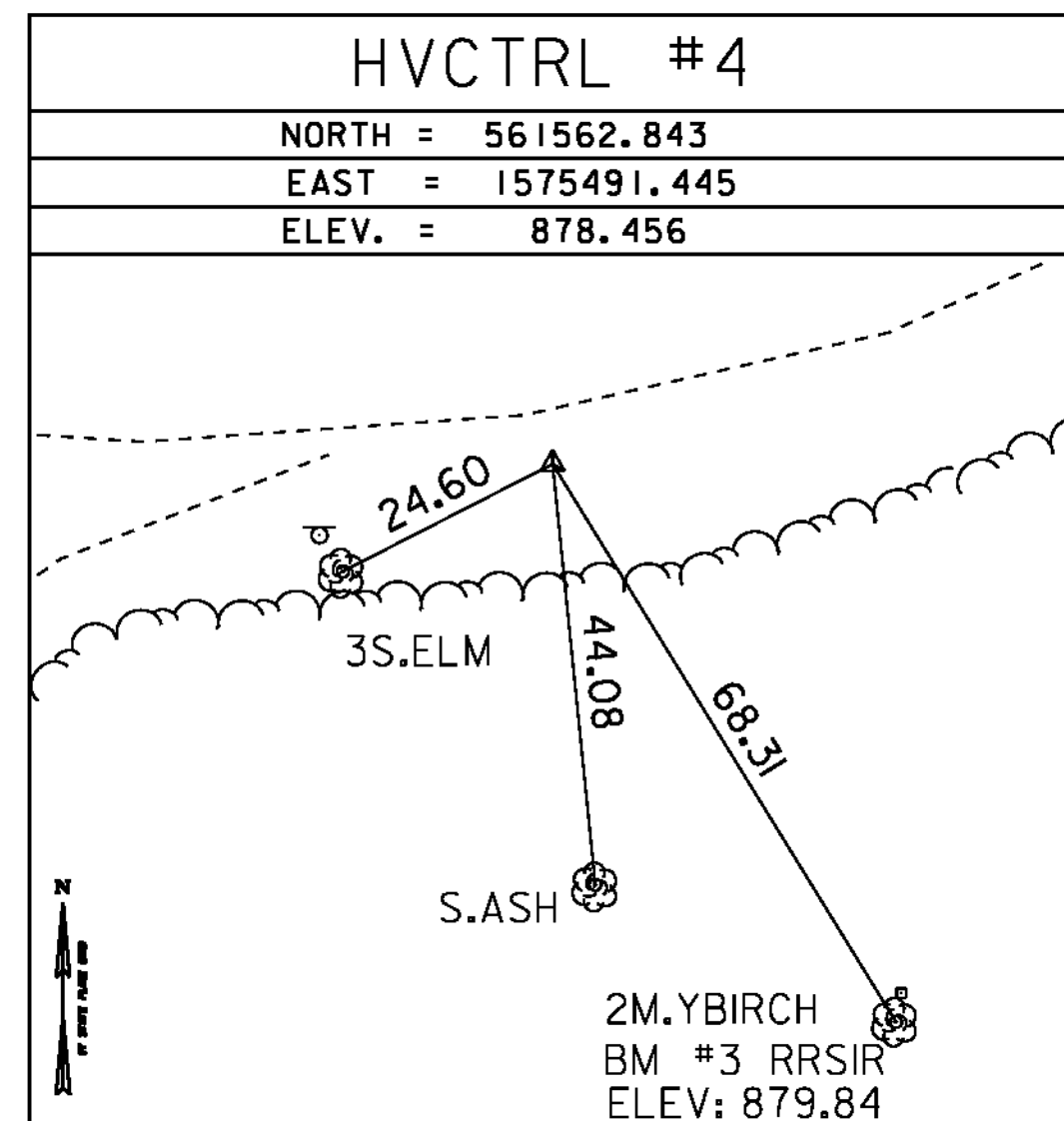
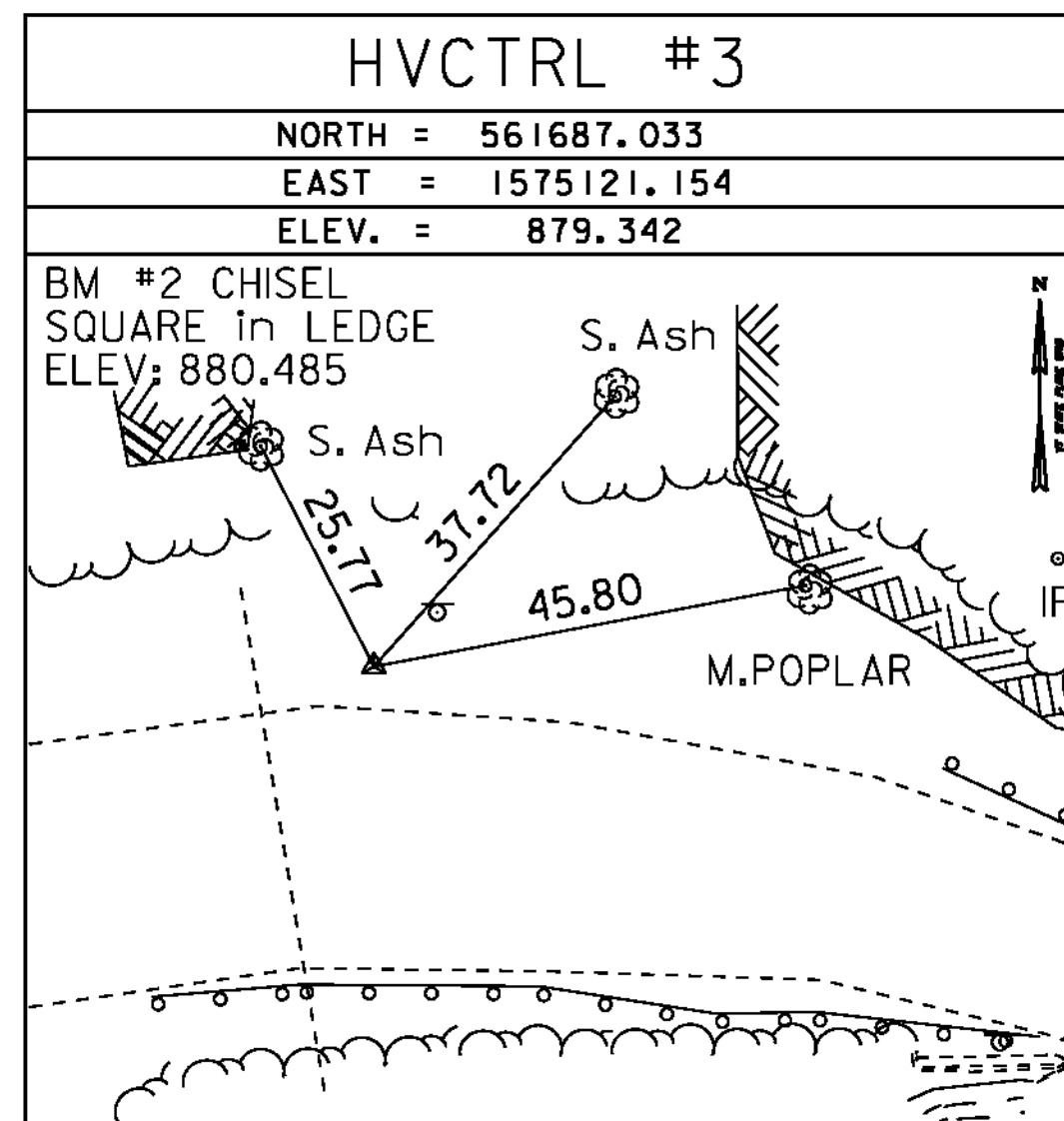
DESCRIBED BY VERMONT AGENCY OF TRANSPORTATION 1996 (DJM)  
 GENERAL LOCATION, ROXBURY, VT. ABOUT 9.5 MI (15.3 KM) SOUTHWEST OF 'NORTHFIELD, ABOUT 8.5 MI (13.7 KM) NORTH OF RANDOLPH, AND ABOUT 21 MI (33.8 KM) EAST OF MIDDLEBURY. TO REACH FROM THE INTERSECTION OF VT ROUTES 12 AND 12A IN RANDOLPH VILLAGE GO NORTH ALONG VT ROUTE 12A FOR 10.4 MI (16.7 KM) TO THE MARK ON THE LEFT IN THE TOP OF THE NORTH END OF A MASSIVE LEDGE OUTCROP, JUST SOUTH OF AN OLD ROAD GRADE. IT IS 0.6 MI (1.0 KM) SOUTH ALONG VT ROUTE 12A FROM THE CENTRAL VERMONT RAILROAD BRIDGE OVER VT ROUTE 12A AND THE THIRD BRANCH OF THE WHITE RIVER. TO REACH FROM THE INTERSECTION OF VT ROUTES 12 AND 12A IN NORTHFIELD GO SOUTH ALONG VT ROUTE 12A FOR 10.8 MI (17.4 KM) TO THE MARK ON THE RIGHT. THE MARK IS 16.5 M (54.1 FT) WEST OF AND ABOUT 5 M, (16.4 FT) HIGHER THAN THE CENTERLINE OF VT ROUTE 12A. TH MARK IS 13.3 M (43.6-FT) NORTH OF POLE NO. 6/282, 10.7 M (35.1-FT) EAST OF THE EAST EDGE OF A QUARRY HOLE. 7.8 M (25.6 FT) EAST OF A 30-CM TRIPLE-TRUNK SPRUCE, AND 1.2 M (3.9 FT) EAST OF A FIBERGLASS WITNESS POST.

**HVCTRL #2**

ROXRIM AZ MK  
 NORTH = 561370.541  
 EAST = 1574485.923  
 ELEV. = 875.294

DESCRIBED BY VERMONT AGENCY OF TRANSPORTATION 1996 (DJM)  
 GENERAL LOCATION, ROXBURY, VT. ABOUT 9 MI (14.5 KM) SOUTHWEST OF 'NORTHFIELD, ABOUT 9 MI (14.5 KM) NORTH OF RANDOLPH, AND ABOUT 21 MI (33.8 KM) EAST OF MIDDLEBURY. TO REACH FROM THE INTERSECTION OF VT, ROUTES 12 AND 12A IN RANDOLPH VILLAGE GO NORTH ALONG VT ROUTE 12A FOR 10.8 MI (17.4 KM) TO THE MARK ON THE LEFT. IT IS 0.15 MI (0.24 KM) SOUTH ALONG VT ROUTE 12A FROM THE CENTRAL VERMONT RAILROAD BRIDGE OVER VT ROUTE 12A AND THE THIRD BRANCH OF THE WHITE RIVER. TO REACH FROM THE INTERSECTION OF VT ROUTES 12 AND 12A IN NORTHFIELD GO SOUTH ALONG VT ROUTE 12A FOR 10.3 MI (16.6 KM) TO THE MARK ON THE RIGHT. THE MARK IS 7.2 M (23.6 FT) NORTHWEST OF AND ABOUT 0.3 M (1.0 FT) LOWER THAN THE CENTERLINE OF VT ROUTE 12. 15.6 M (51.2 FT) SOUTH OF POLE NO. 291, 24.7 M (81.0 FT) SOUTHWEST OF A YELLOW IRON PROPERTY PIPE WHICH PROJECTS ABOUT 0.8 M (2.6 FT) ABOVE GROUND SURFACE. THE MARK IS 57.0 M (187.0-FT) SOUTHWEST OF THE CENTERLINE OF GRAVEL DRIVE, AND 0.35-M (1.15-FT) SOUTHEAST OF A FIBERGLASS WITNESS POST. IT IS A CAST ALUMINUM DISK IN THE TOP OF A CAST ALUMINUM MONUMENT SET FLUSH WITH GROUND SURFACE.

TRAVERSE TIES



• MAIN TRAVERSE COMPLETED Aug. 24, 1998 by L. Orvis P.C. & R. Bullock

ALIGNMENT COORD

	STATION	NORTHING	EASTING
POB	1+00.00	561605.9485	1574935.8958
PC	1+85.46	561645.4116	1575011.6966
	Tangent Direction:	N 62°29'52.17" E	
	Tangent Length:	85.46	
PI	2+87.44	561692.5071	1575102.1577
PT	3+77.45	561657.0833	1575197.7943
	Radius:	230.00	
	Delta:	47°49'36.42" Right	
	Degree of Curvature (Arc):	24°54'40.35"	
	Length:	191.99	
	Tangent:	101.99	
	Chord:	186.46	
	Middle Ordinate:	19.74	
	External:	21.60	
PT	3+77.45	561657.0833	1575197.7943
PC	5+62.68	561592.7464	1575371.4903
	Tangent Direction:	S 69°40'31.41" E	
	Tangent Length:	185.23	
PI	6+71.44	561554.9684	1575473.4828

	STATION	NORTHING	EASTING
PT	7+65.87	561609.8318	1575567.3959
	Radius:	230.00	
	Delta:	50°37'04.04" Left	
	Degree of Curvature (Arc):	24°54'40.35"	
	Length:	203.19	
	Tangent:	108.76	
	Chord:	196.65	
	Middle Ordinate:	22.08	
	External:	24.42	
PT	7+65.87	561609.8318	1575567.3959
POE	8+00.00	561627.0486	1575596.8671
	Tangent Direction:	N 59°42'24.55" E	
	Tangent Length:	34.13	

DATUM	
VERTICAL	NAVD 88
HORIZONTAL	NAD 83 (96)
ADJUSTMENT	Least Sq.

PROJECT NAME:	ROXBURY
PROJECT NUMBER:	BHF 0187(8)
FILE NAME:	survey\10c4201.dgn
PROJECT LEADER:	WILLIAMS
DESIGNED BY:	
TIE SHEET	
PLOT DATE:	21-SEP-2011
DRAWN BY:	R. BULLOCK
CHECKED BY:	
SHEET	12 OF 54