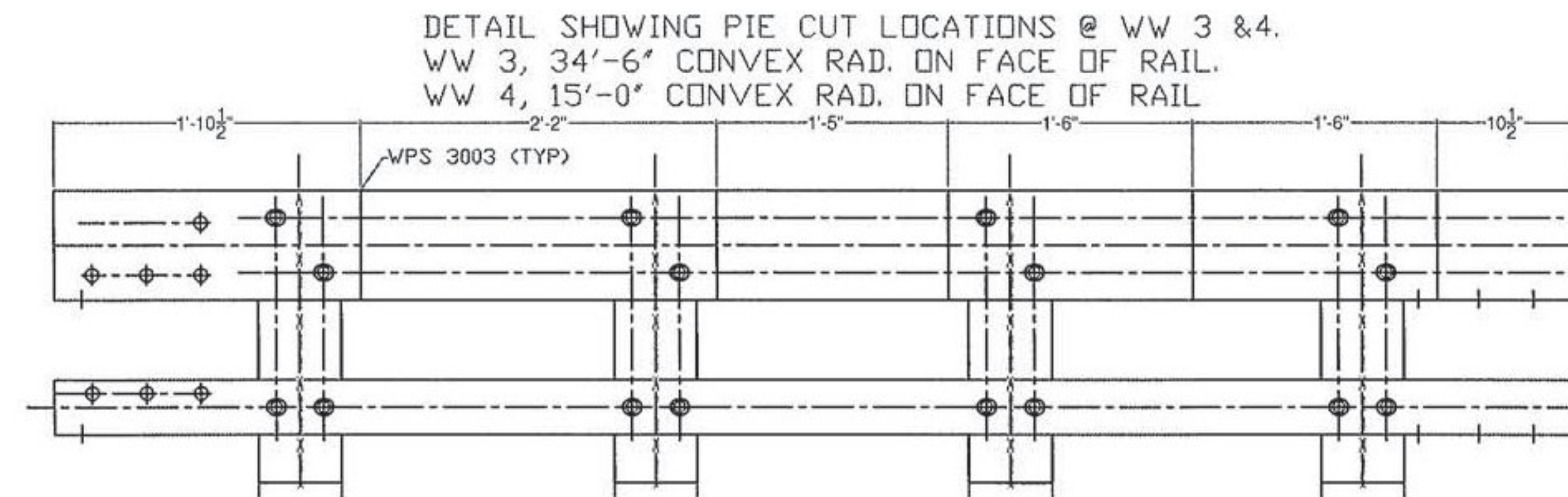
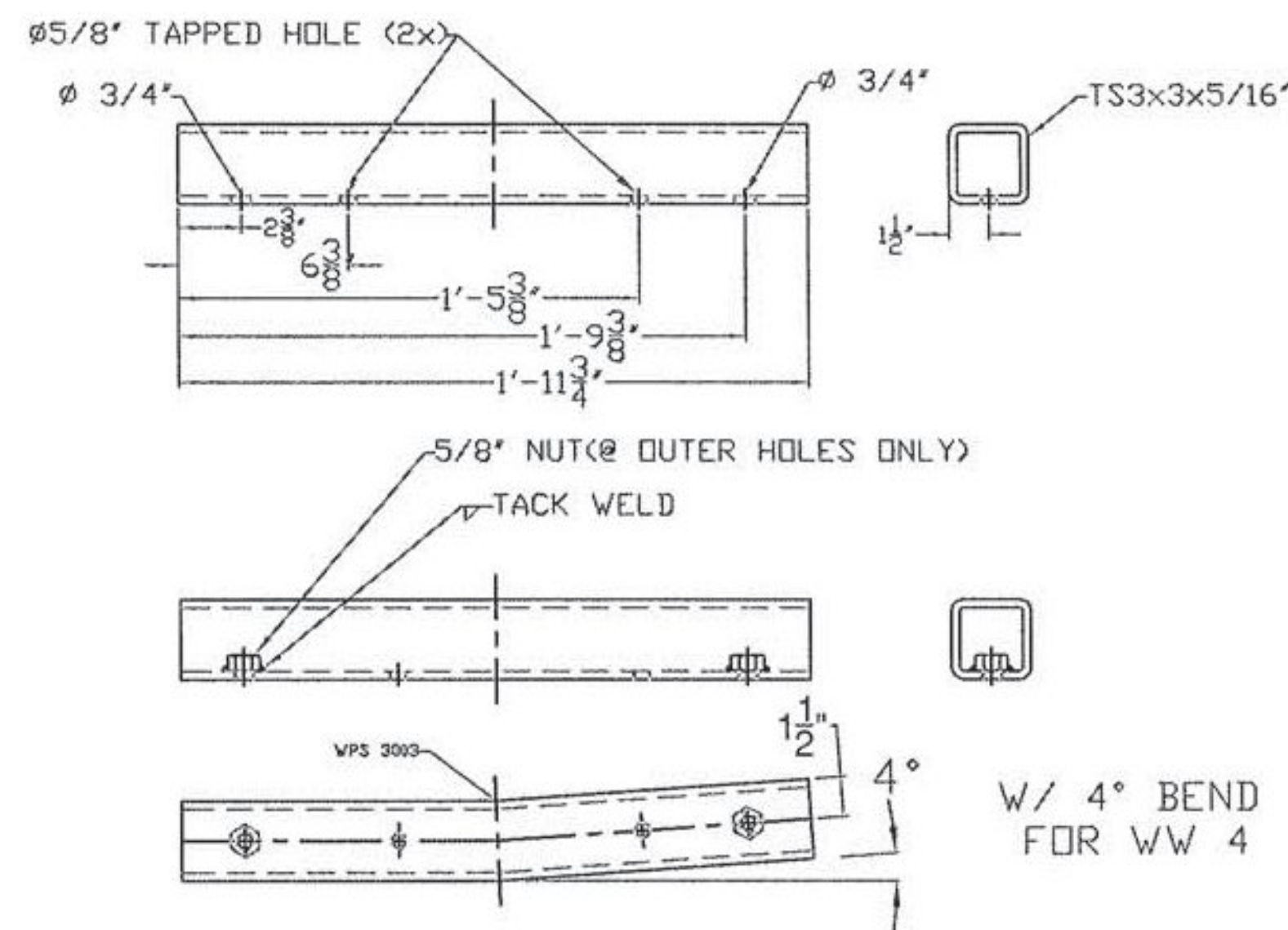


BILL OF MATERIAL (621.72) WW-4

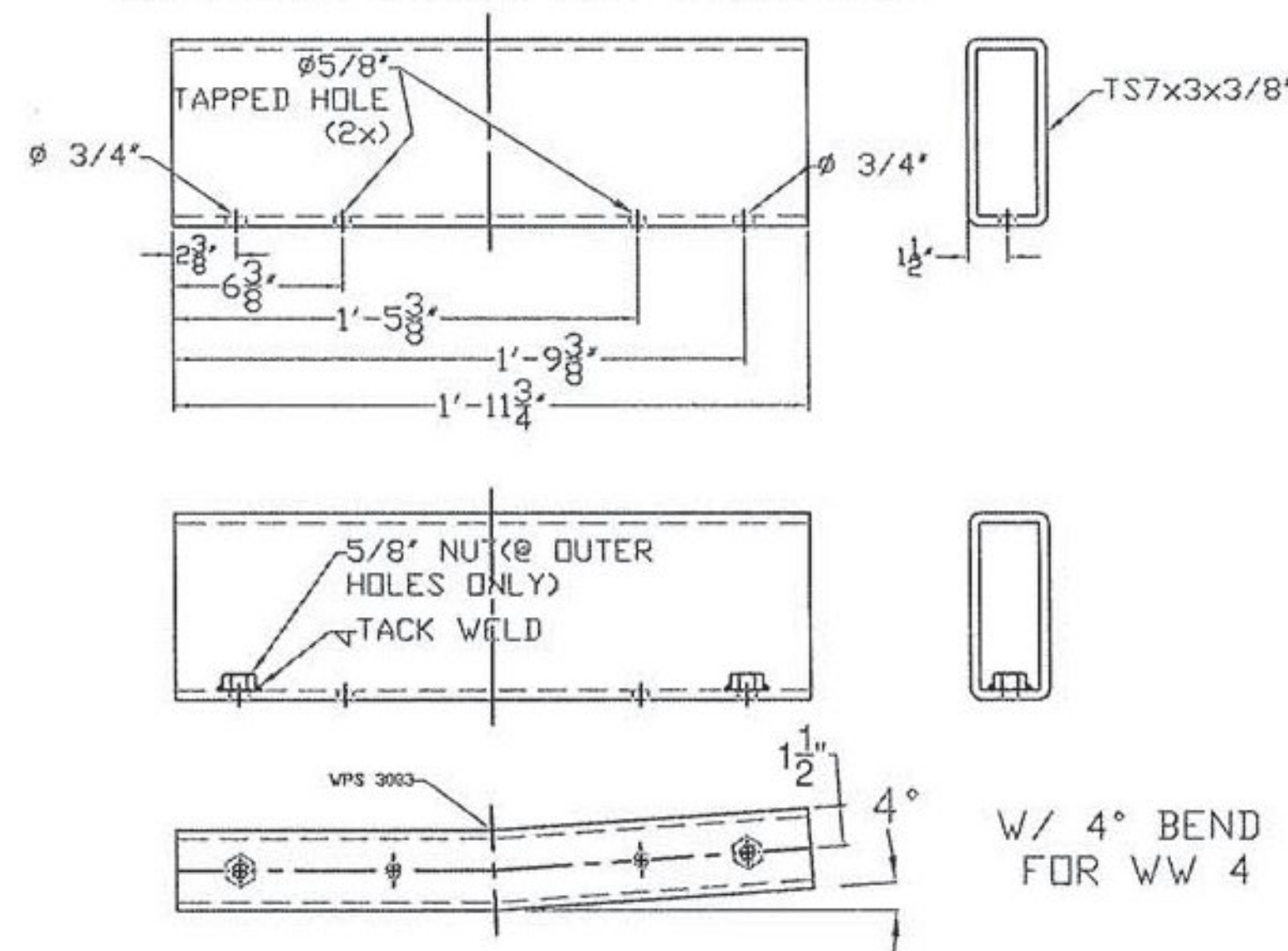
QTY	DESCRIPTION	ASTM DESIGNATION
1	THRIE BEAM TERMINAL CONNECTION (10 Ga)	AASHTO M180
1	THRIE BEAM TRANSITION @ 7'-3 1/2' (10 Ga)	AASHTO M180
1	CONNECTION PLATE	M270 Gr. 36
2	12' 6' THRIE BEAM (12Ga)	AASHTO M180
4	W6X25 POST @ 8'-0" (PUNCHING VARIES - POST 1-4)	A572 Gr. 50
1	DEFLECTOR PLATE (APPROACH OR TRAILING)	A36
1	8' X 4' X 5/16" RAIL @ 9'-4" W/ 15'-0" RAD.	A500 Gr. B
1	4' X 4' X 1/4" RAIL @ 9'-4" W/ 15'-0" RAD.	A500 Gr. B
1	8' X 4' X 1/4" END CAP	A36
1	4' X 4' X 1/4" END CAP	A36
1	7' x 3' x 3/8" SPLICE TUBE @ 1' 11 3/4'	A500 Gr. B
1	3' x 3' x 5/16" SPLICE TUBE @ 1' 11 3/4'	A500 Gr. B
8	Ø 3/4" SCH. 40 PIPE @ 1/2"	A53
8	Ø 5/8" X 1 3/4" HEX BOLTS	A307
8	Ø 5/8" FLAT WASHER, HARDENED, TYPE A, PLAIN WIDE	A307
7	Ø 3/4" X 6" CARRIAGE BOLT, & NUT	A307
1	Ø 3/4" X 2" CARRIAGE BOLT, & NUT	A307
19	Ø 5/8" X 1'-6" BUTTON HEAD POST BOLT, PLATE WASHER, F.W. & NUT	A307, A36, F844 or 307, & A563
36	Ø 5/8" X 1 1/4" BUTTON HEAD SPLICE BOLT, RECESSED NUT & F.W.	A307
19	3/16" SPEC. PLATE WASHER @ 1 3/4" X 3"	A36
16	Ø 3/4" X 6" ROUND HEAD BOLT, F.W., LOCK W. & NUT	A449, F436, ASME B18.21.1, & A563
10	6 X 8" WOOD POST @ 7'-0"	TIMBER
9	6 X 8" WOOD BLOCKOUTS @ 1'-6"	TIMBER
1	6 X 8" WOOD BLOCKOUTS @ 1'-2"	TIMBER
10	Ø 7/8" POST BOLT @ 18", F.W. & NUT	F568, F436, A563



EXPANSION SPLICE FOR: TS4x4x1/4"



EXPANSION SPLICE FOR: TS8x4x5/16"



SHOP DRAWING REVIEW

REVIEWED AS REQUIRED BY THE CONSTRUCTION CONTRACT DOCUMENTS AND APPROVED, BUT ONLY FOR CONFORMANCE TO THE DESIGN CONCEPT OF THE WORK, AND SUBJECT TO FURTHER LIMITATIONS AND REQUIREMENTS CONTAINED IN THE CONSTRUCTION CONTRACT DOCUMENTS.

REJECTED REVISE AND RESUBMIT FURNISH AS CORRECTED

CORRECTIONS OR COMMENTS MADE ON THE SHOP DRAWINGS DURING THIS REVIEW DO NOT RELIEVE CONTRACTOR FROM COMPLIANCE WITH REQUIREMENTS OF THE DRAWINGS AND SPECIFICATIONS. THIS CHECK IS ONLY FOR REVIEW OF GENERAL CONFORMANCE WITH THE DESIGN CONCEPT OF THE PROJECT AND GENERAL COMPLIANCE WITH THE INFORMATION GIVEN IN THE CONTRACT DOCUMENTS. THE CONTRACTOR IS RESPONSIBLE FOR: CONFIRMING AND CORRELATING ALL QUANTITIES AND DIMENSIONS; SELECTING FABRICATION PROCESSES AND TECHNIQUES OF CONSTRUCTION; COORDINATING HIS WORK WITH THAT OF ALL OTHER TRADES; AND PERFORMING HIS WORK IN A SAFE AND SATISFACTORY MANNER.

VHB

Job Number: 57517
 Reviewed By: B. Masse
 Date: 6-11-14

ITEM #: 621.72

SHEET 4 OF 4

APPROVED BY:

2 RAIL BRIDGE RAIL TO GUARDRAIL TRANSITION

ROCHESTER, BR# 0162 (18) VT RTE 73 (MAJOR COLLECTOR), BRIDGE NO: 19, OVER WHITE RIVER
TOWN OF ROCHESTER, COUNTY OF WINDSOR, VT

R NO.	DATE	DESCRIPTION	BY	R NO.	DATE	DESCRIPTION	BY
E 1	6/6/14	REVISED PER 5/30/14 MARK-UP	E.P. E				
V 2	6/10/14	REVISED PER 6/9/14 MARK-UP	E.P. V				

ELDERLEE, INC.

OAKS CORNERS, NEW YORK 14518
 E-Mail: dlong@elderlee.com
 Tel: 315-789-6670 Fax: 315-789-6615

DRAWN E.P. 5/16/14
 CHECKED D.L. 5/16/14
 APPROVED
 SCALE SCHEMATIC
 DRAWING NO. F.R.L. ROCHESTER, TR19