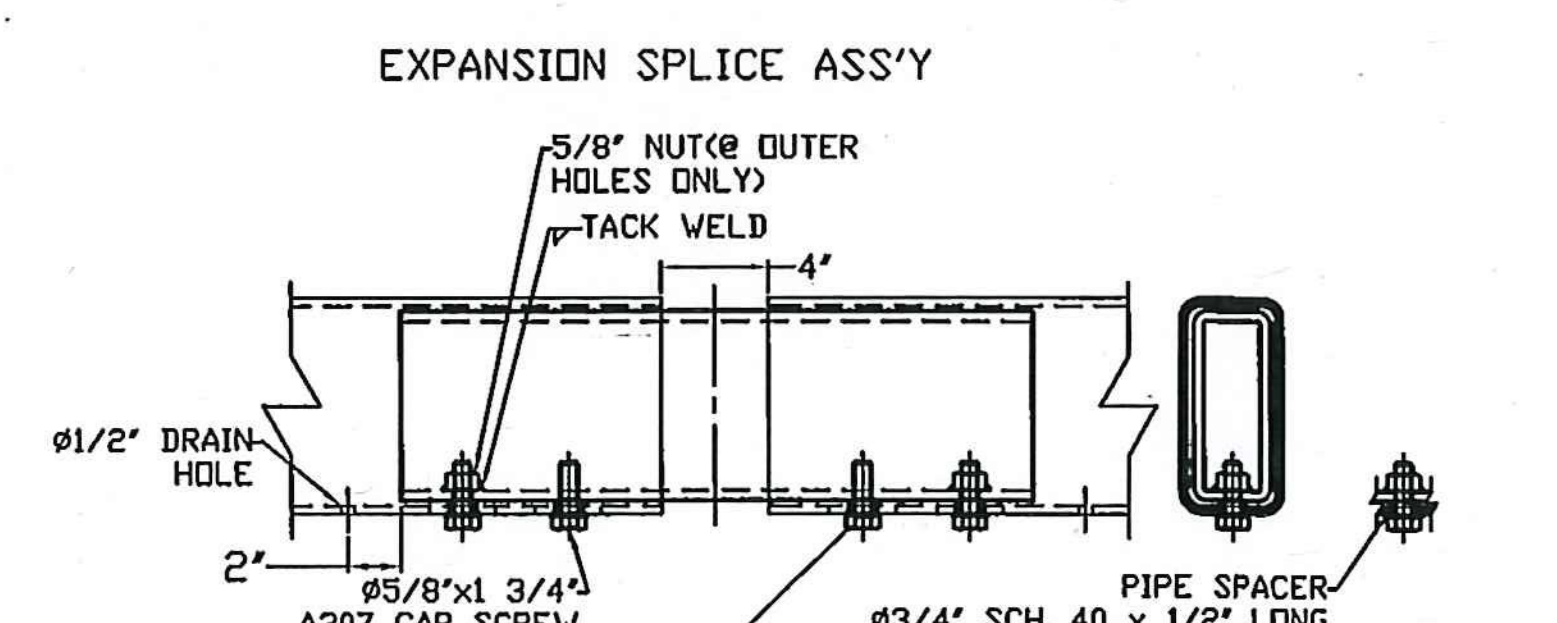
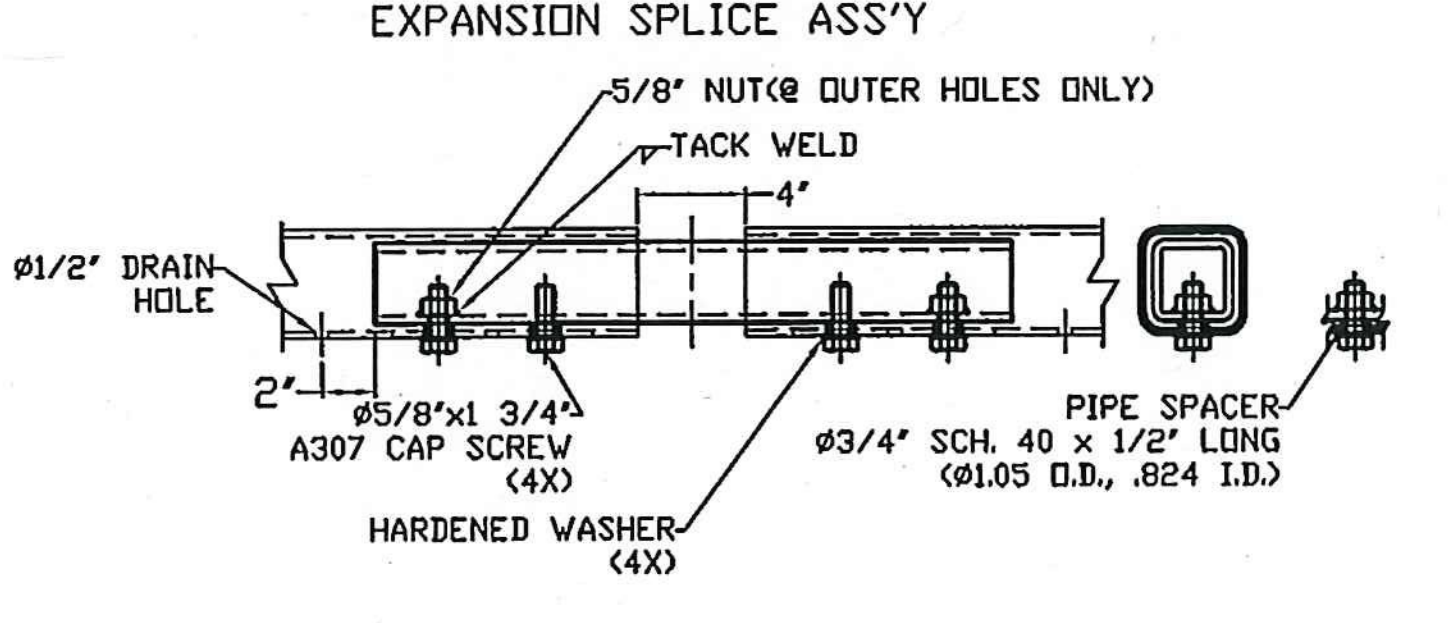
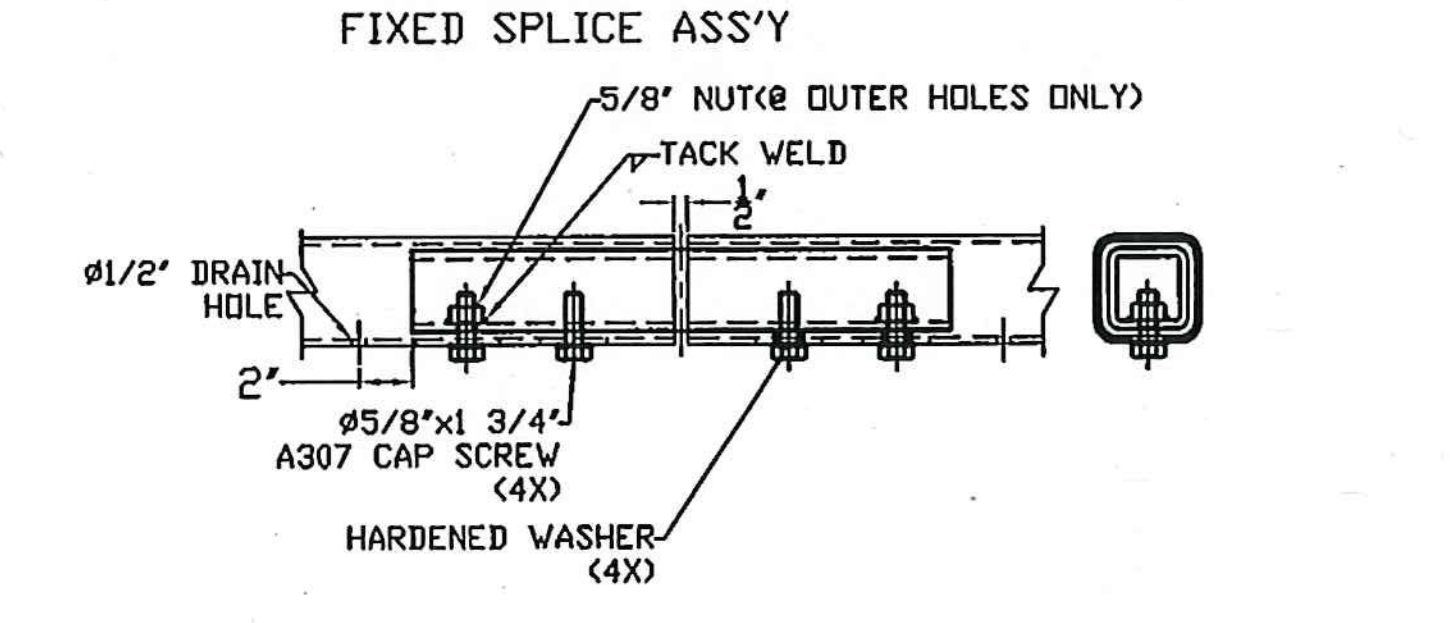
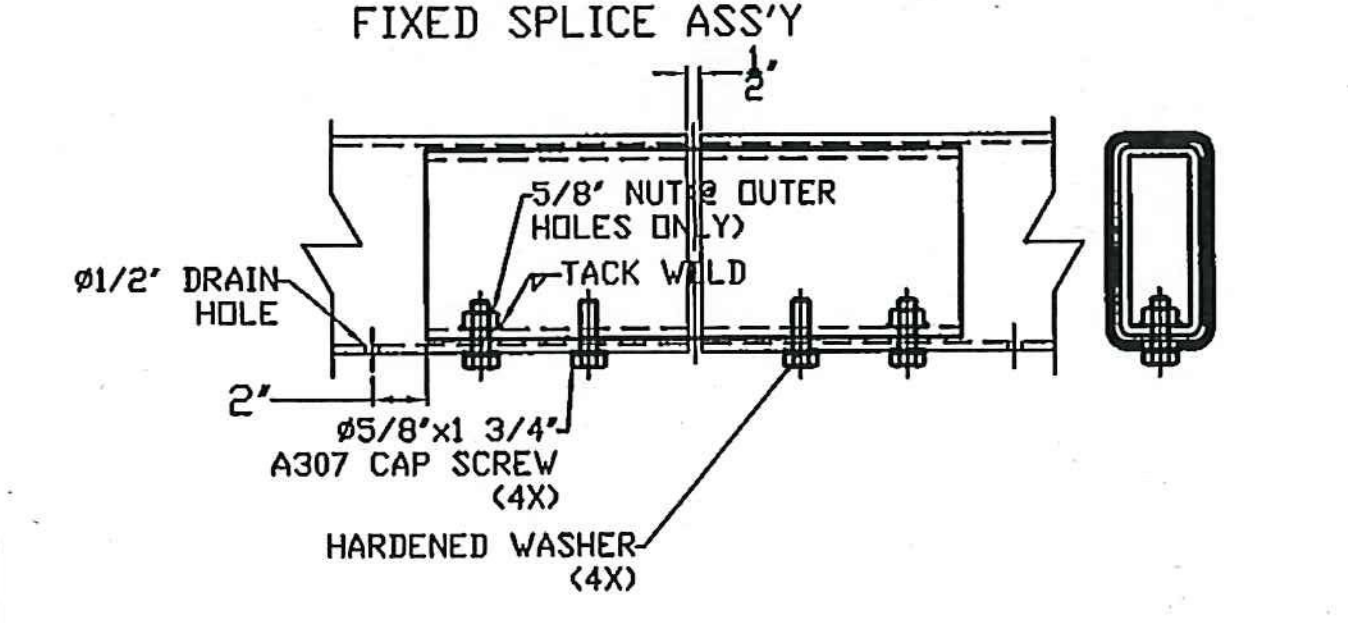
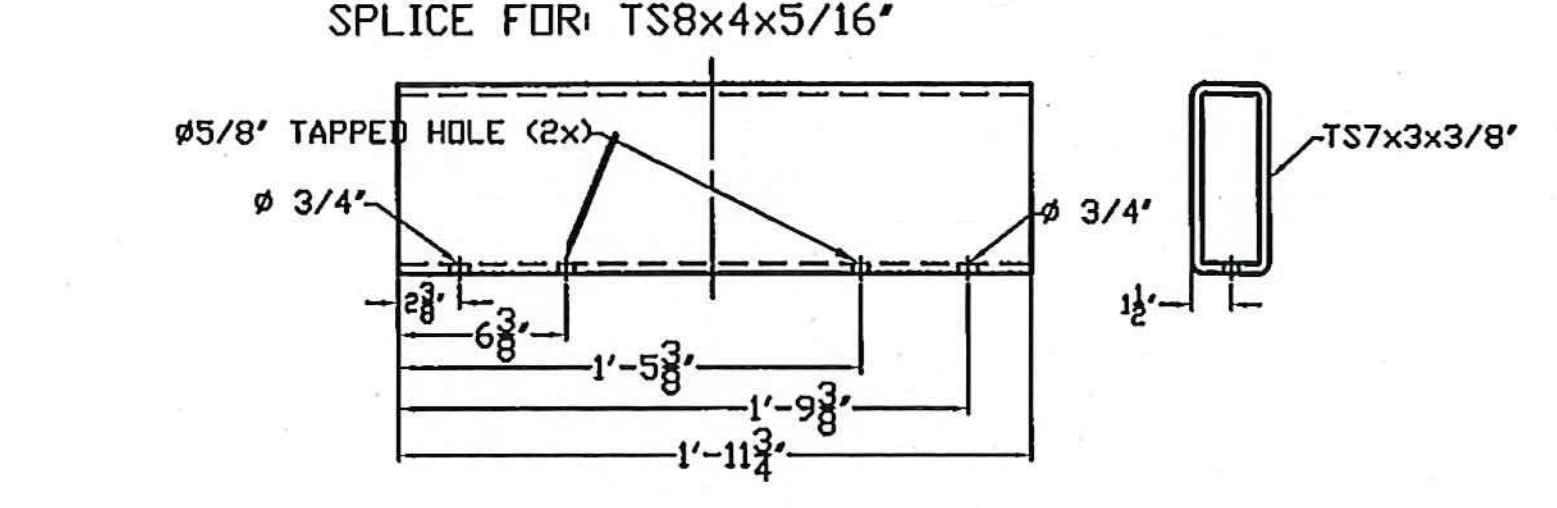
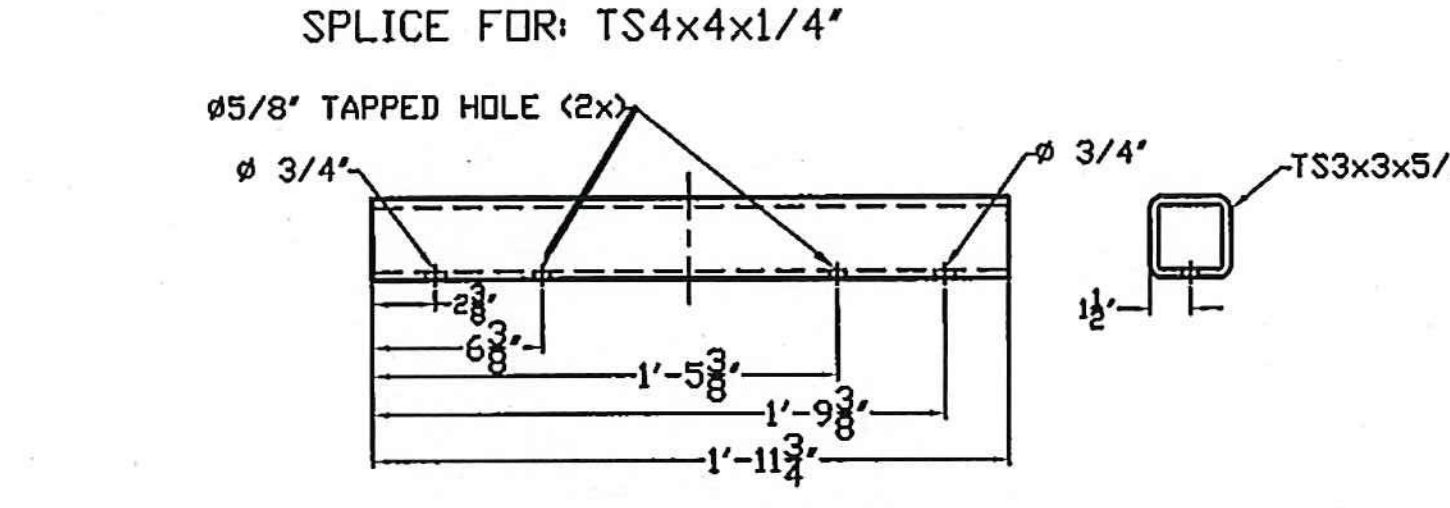
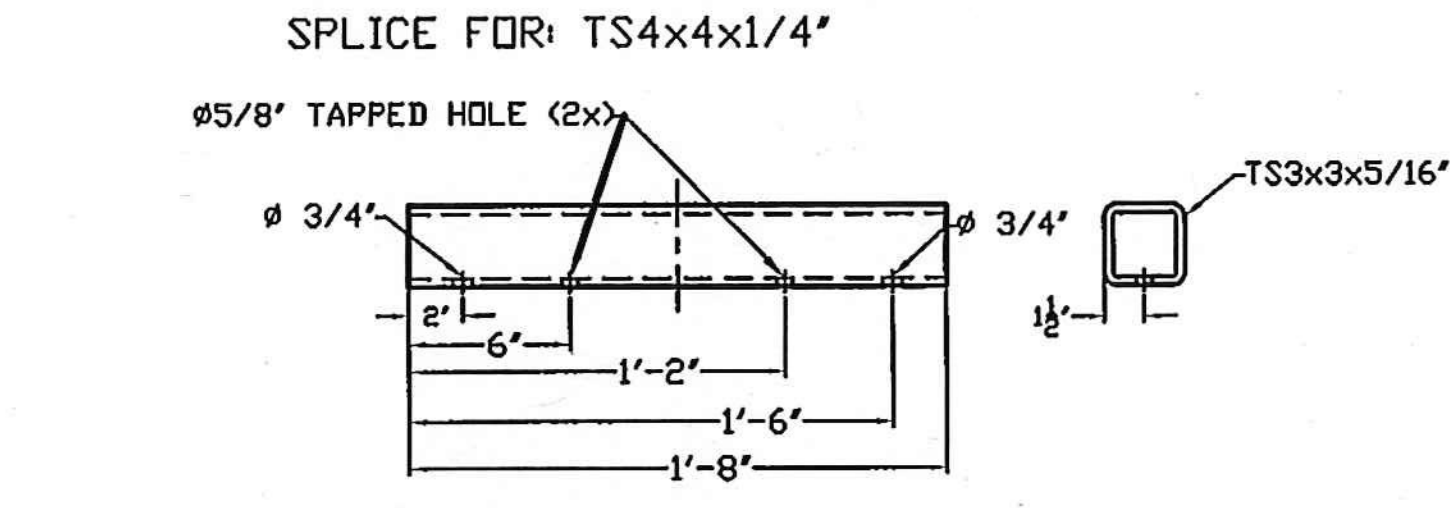
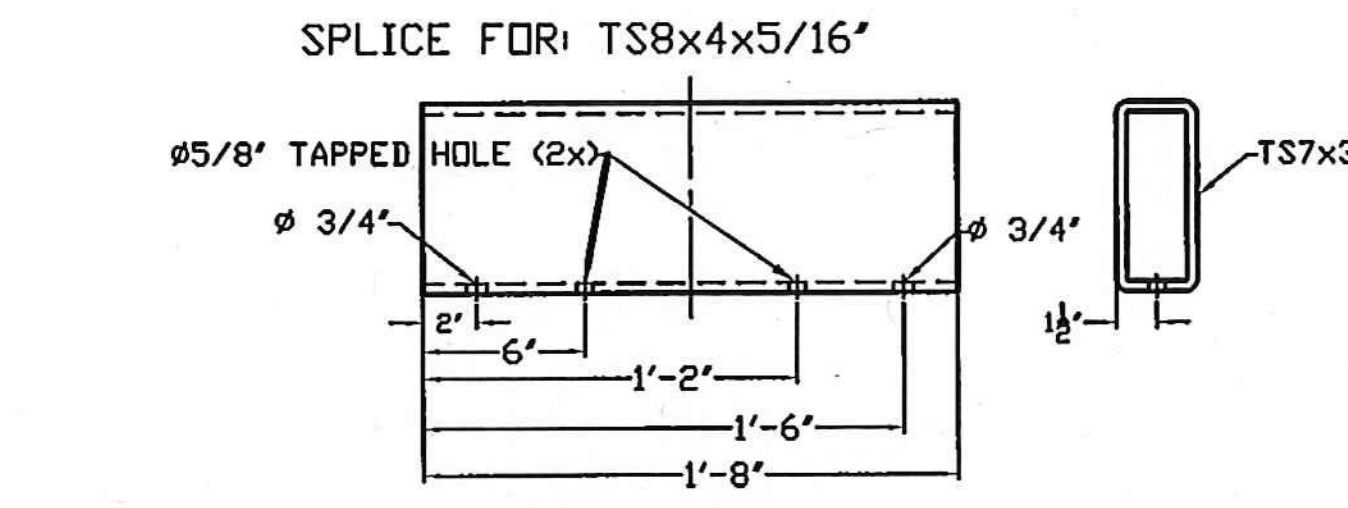
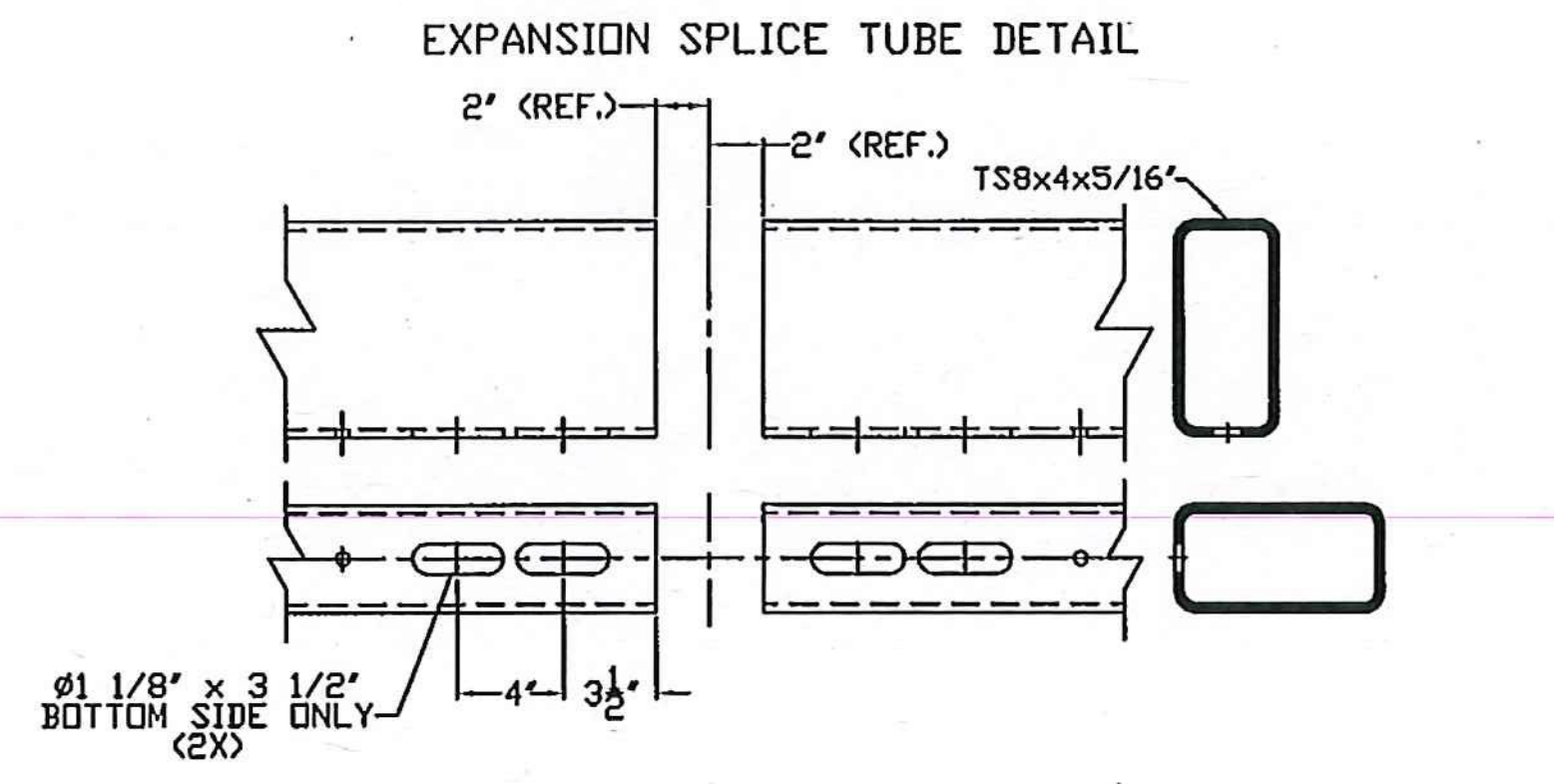
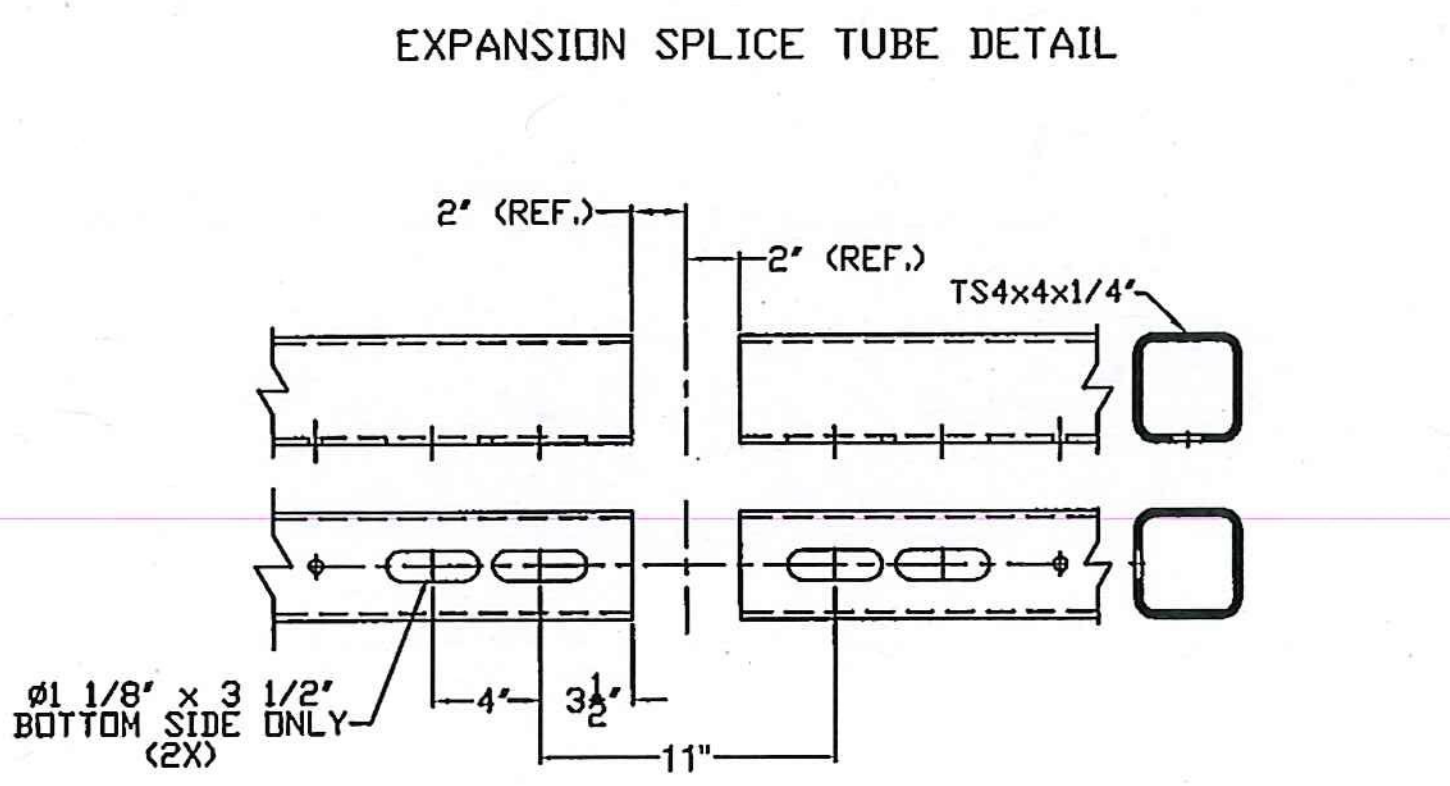
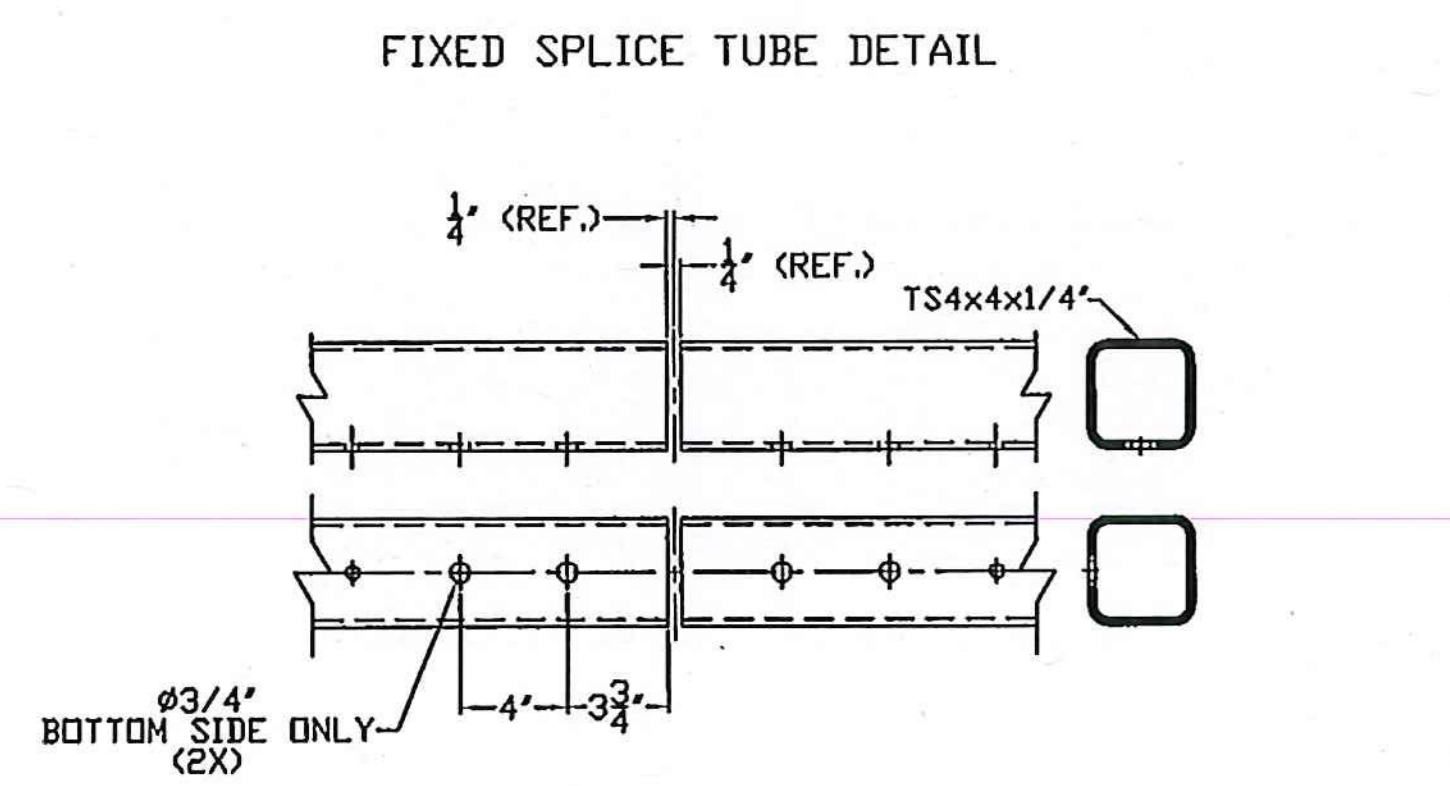
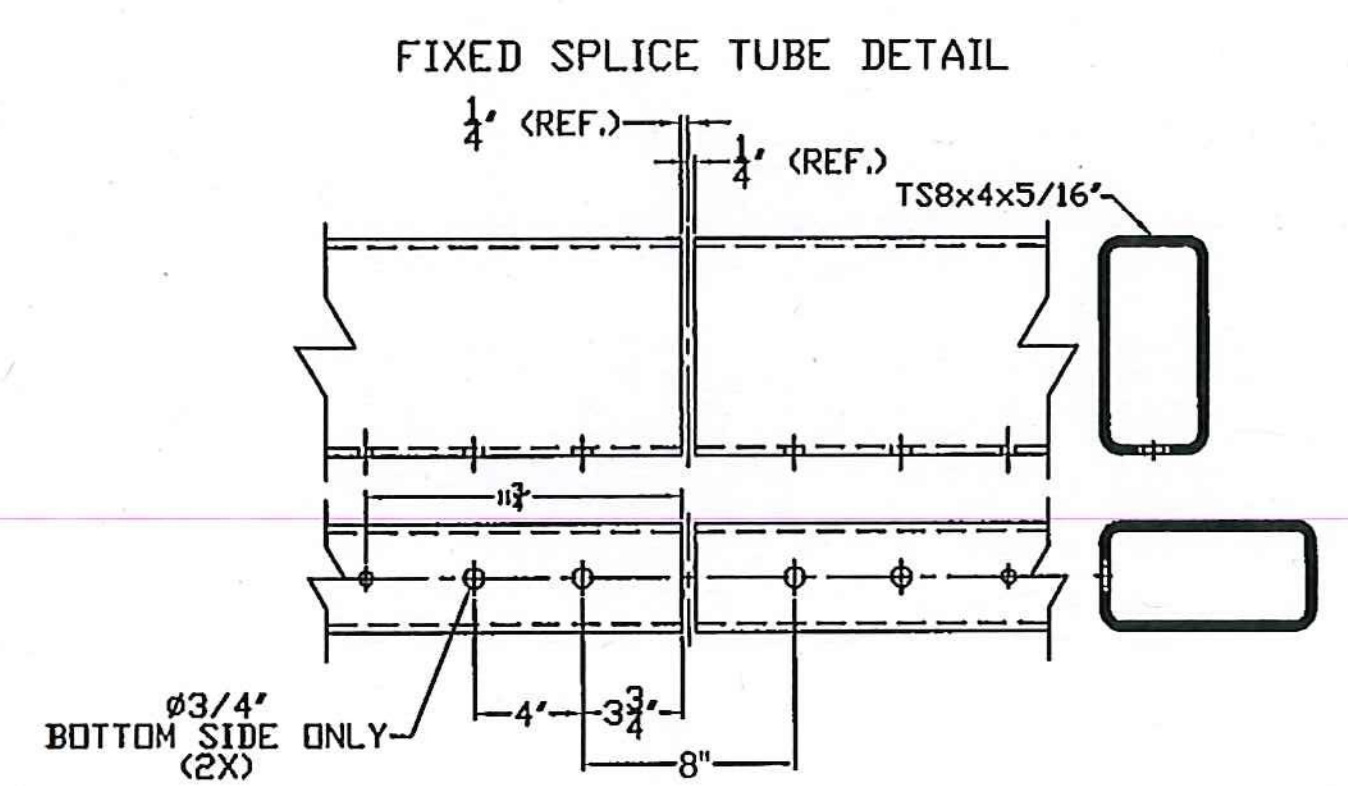
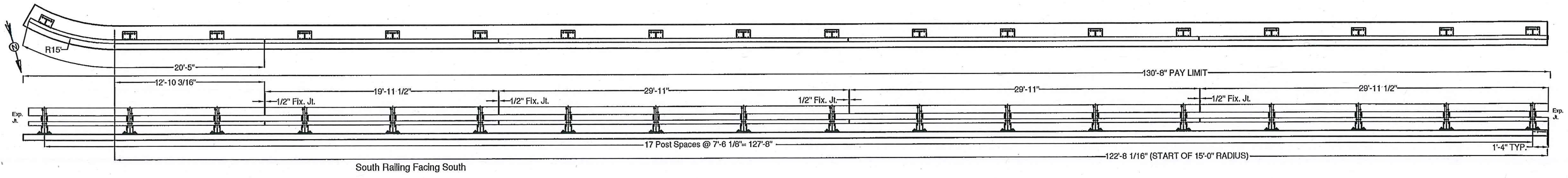


RAIL BENDING PROCEDURE:

1) RADII GREATER THAN 16' TO BE CURVED ON A TUBE BENDING MACHINE, RADII LESS THAN 16' TO BE "PIE CUT" AND WELDED. CURVED RAILING WILL HAVE AN 18" LENGTH ON EACH END STRAIGHT TO ACCOMADATE SPLICES.



SHOP DRAWING REVIEW

REVIEWED AS REQUIRED BY THE CONSTRUCTION CONTRACT DOCUMENTS AND APPROVED, BUT ONLY FOR CONFORMANCE TO THE DESIGN CONCEPT OF THE WORK, AND SUBJECT TO FURTHER LIMITATIONS AND REQUIREMENTS CONTAINED IN THE CONSTRUCTION CONTRACT DOCUMENTS.

REJECTED REVISE AND RESUBMIT FURNISH AS CORRECTED

CORRECTIONS OR COMMENTS MADE ON THE SHOP DRAWINGS DURING THIS REVIEW DO NOT RELIEVE CONTRACTOR FROM COMPLIANCE WITH REQUIREMENTS OF THE DRAWINGS AND SPECIFICATIONS. THIS CHECK IS ONLY FOR REVIEW OF GENERAL CONFORMANCE WITH THE DESIGN CONCEPT OF THE PROJECT AND GENERAL COMPLIANCE WITH THE INFORMATION GIVEN IN THE CONTRACT DOCUMENTS. THE CONTRACTOR IS RESPONSIBLE FOR: CONFIRMING AND CORRELATING ALL QUANTITIES AND DIMENSIONS; SELECTING FABRICATION PROCESSES AND TECHNIQUES OF CONSTRUCTION; COORDINATING HIS WORK WITH THAT OF ALL OTHER TRADES; AND PERFORMING HIS WORK IN A SAFE AND SATISFACTORY MANNER.

VHB Job Number: 57517
 Reviewed By: R. Mans
 Date: 5-30-14

ITEM #: 525.33

APPROVED BY:

SHEET 2 OF 2

BRIDGE RAIL DETAILS SHEET
 ROCHESTER, BR# 0162 (18) VT RTE 73 (MAJOR COLLECTOR), BRIDGE NO: 19, OVER WHITE RIVER
 TOWN OF ROCHESTER, COUNTY OF WINDSOR, VT

| R NO. | DATE | DESCRIPTION | BY | R NO. | DATE | DESCRIPTION | BY |
|-------|---------|--------------------------|------|-------|------|-------------|----|
| E 1 | 5/28/14 | REVISE PER 5/27/14 EMAIL | E.P. | E | | | |

ELDERLEE, INC.
 OAKS CORNERS, NEW YORK 14578
 E-Mail: dlong@elderlee.com / epeek@elderlee.com
 Tel: 315-789-6670 Fax: 315-789-6615

| | | |
|----------------------------|-----------|--------|
| DRAWN | E.P. | 5/6/14 |
| CHECKED | D.L. | 5/6/14 |
| APPROVED | | |
| SCALE | SCHEMATIC | |
| DRAWING NO. FR-L-ROCH-BR19 | | |