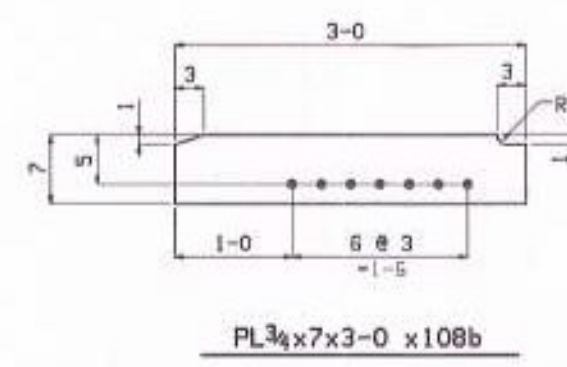
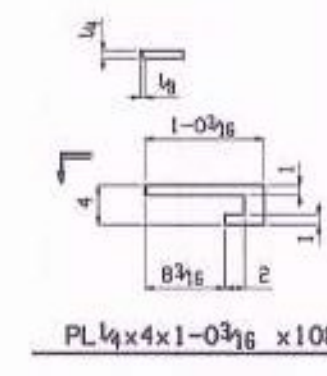


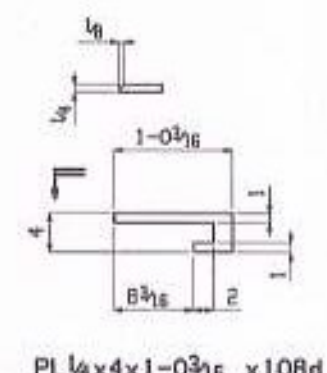
PL 3/4 x 7 x 3-0 x 108a



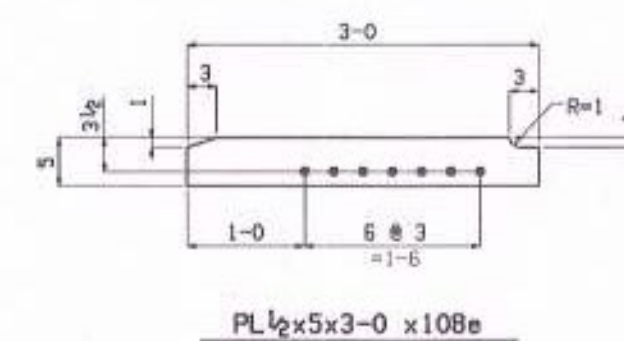
PL 3/4 x 7 x 3-0 x 108b



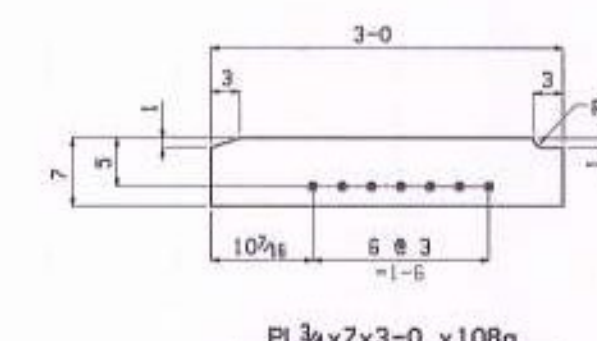
PL 1/4 x 4 x 1-0 3/16 x 108c



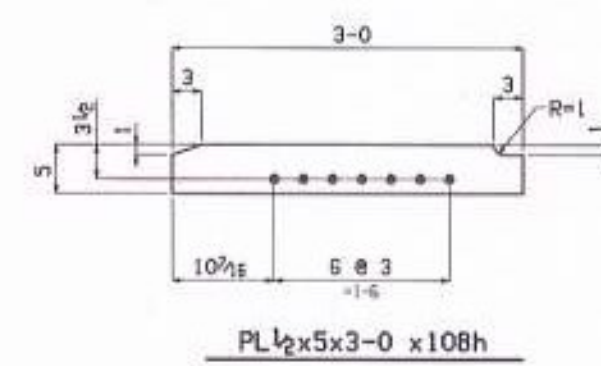
PL 1/4 x 4 x 1-0 3/16 x 108d



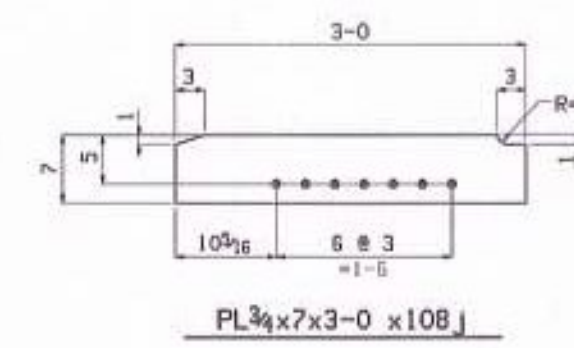
PL 1/2 x 5 x 3-0 x 108e



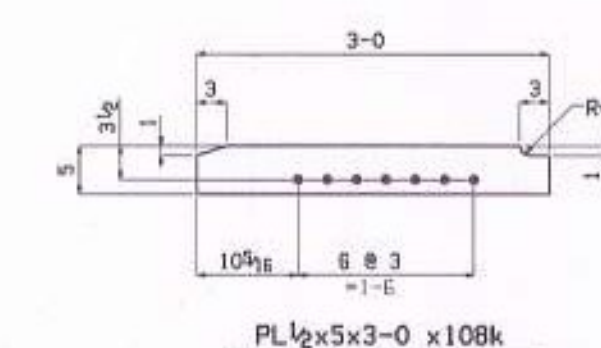
PL 3/4 x 7 x 3-0 x 108g



PL 1/2 x 5 x 3-0 x 108h



PL 3/4 x 7 x 3-0 x 108j



PL 1/2 x 5 x 3-0 x 108k

SHOP DRAWING REVIEW

REVIEWED AS REQUIRED BY THE CONSTRUCTION CONTRACT DOCUMENTS AND APPROVED, BUT ONLY FOR CONFORMANCE TO THE DESIGN CONCEPT OF THE WORK, AND SUBJECT TO FURTHER LIMITATIONS AND REQUIREMENTS CONTAINED IN THE CONSTRUCTION CONTRACT DOCUMENTS.

REJECTED REVISE AND RESUBMIT FURNISH AS CORRECTED

CORRECTIONS OR COMMENTS MADE ON THE SHOP DRAWINGS DURING THIS REVIEW DO NOT RELIEVE CONTRACTOR FROM COMPLIANCE WITH REQUIREMENTS OF THE DRAWINGS AND SPECIFICATIONS. THIS CHECK IS ONLY FOR REVIEW OF GENERAL CONFORMANCE WITH THE DESIGN CONCEPT OF THE PROJECT AND GENERAL COMPLIANCE WITH THE INFORMATION GIVEN IN THE CONTRACT DOCUMENTS. THE CONTRACTOR IS RESPONSIBLE FOR CONFIRMING AND CORRELATING ALL QUANTITIES AND DIMENSIONS; SELECTING FABRICATION PROCESSES AND TECHNIQUES OF CONSTRUCTION; COORDINATING HIS WORK WITH THAT OF ALL OTHER TRADES; AND PERFORMING HIS WORK IN A SAFE AND SATISFACTORY MANNER.

VHB Job Number: S7512.0.0
 Vermont Highway Division, Inc. Reviewed By: R. Mans
 Date: 2-28-14

No	DESCRIPTION	DATE	BY	CHK
B	FOR 2nd APPROVAL	Feb 25 2014	LN	CG
A	FOR APPROVAL	Feb 5 2014	LN	CG

NOTE: BOLT 1 WASHER: 1 WASHER UNDER NUT U.N.
 BOLT 2 WASHERS: 1 WASHER UNDER HEAD U.N.
 1 WASHER UNDER NUT U.N.

STRUCTURAL
 Building Better Bridges
 285 River Road, Claremont, NH
 7-603-542-5280 7-603-542-5337

PROJECT: VERMONT RTE 73
 BRIDGE NO 19
 TOWN OF ROCHESTER

TITLE: SUBMATERIALS DETAILS

REFERENCE: PROJECT NUMBER: CR-BRF-0162 (18)

DATE	BY	DATE	BY	DATE	BY
SAG	JANUARY 2014	LN	000540		
CG	JANUARY 2014	LN	X108		