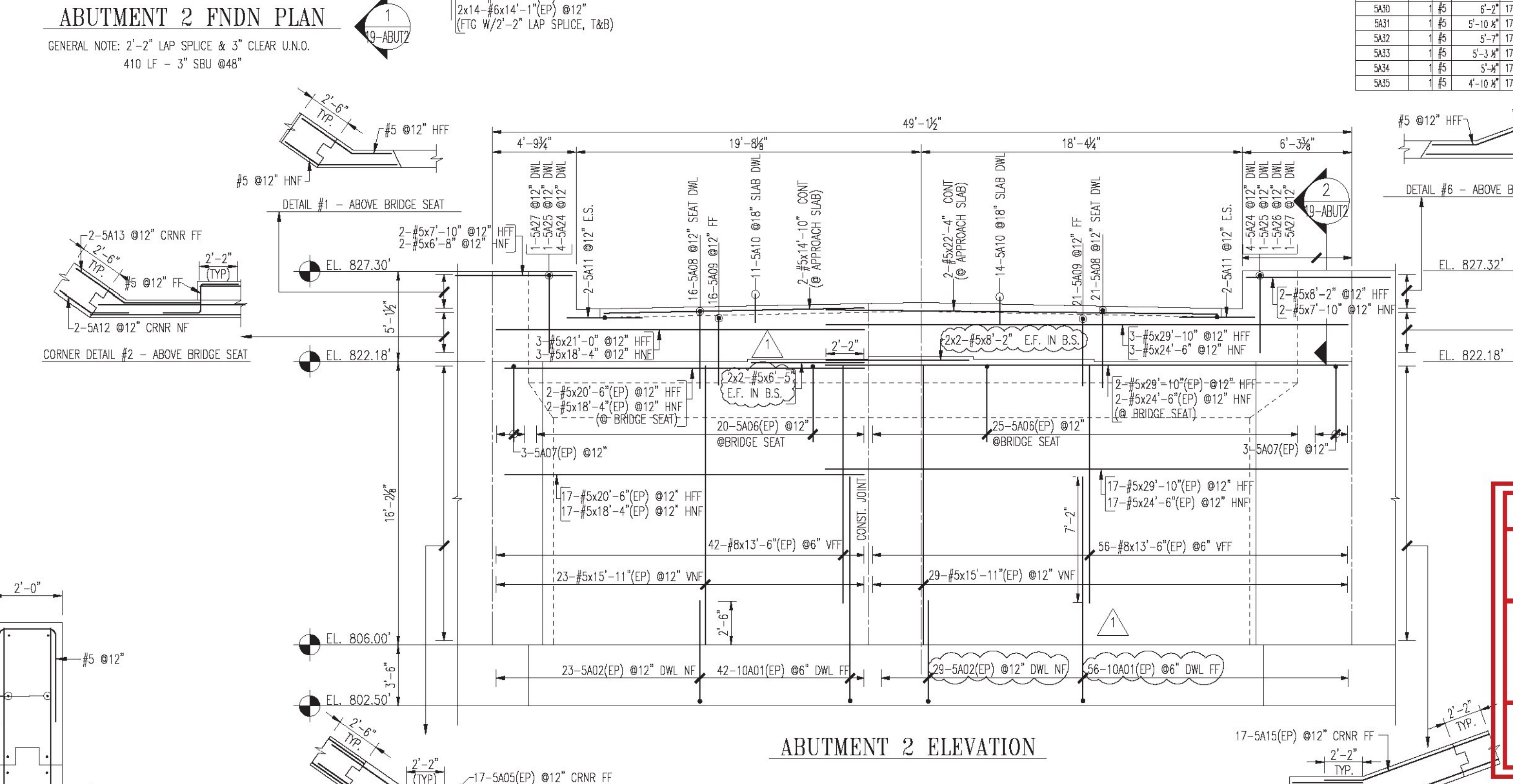
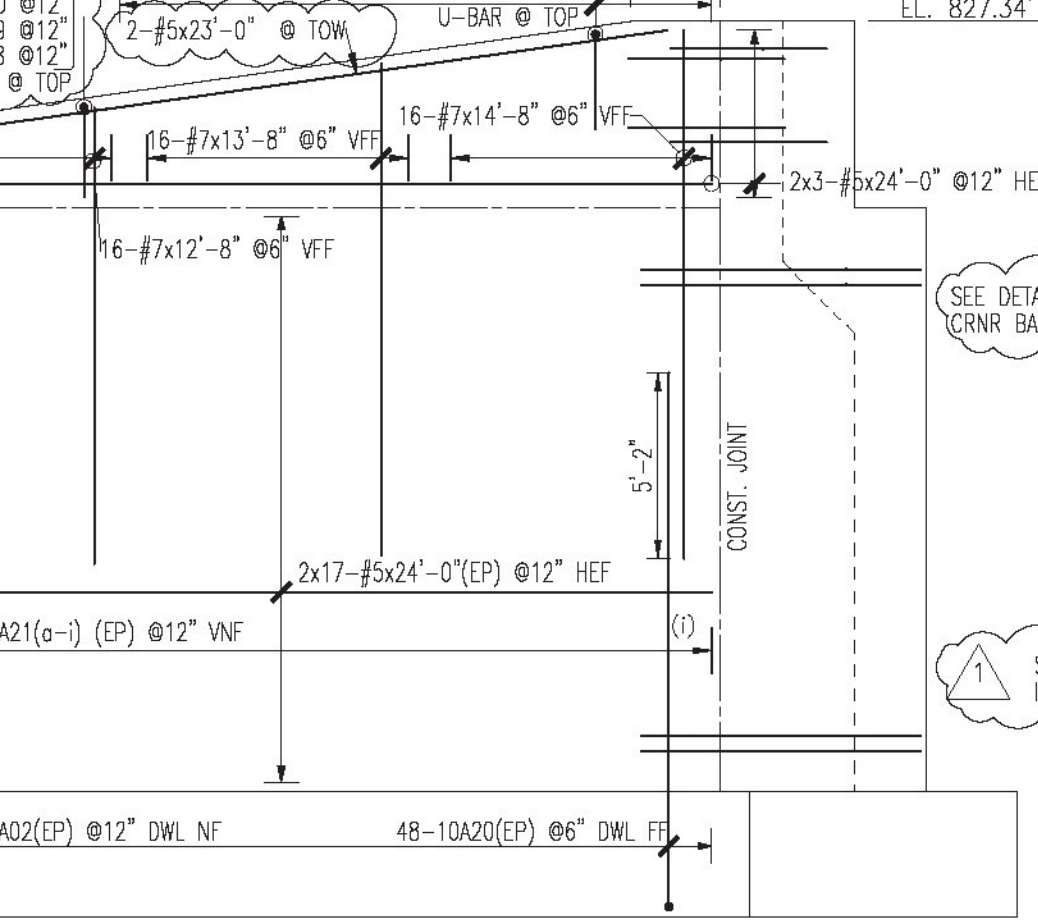
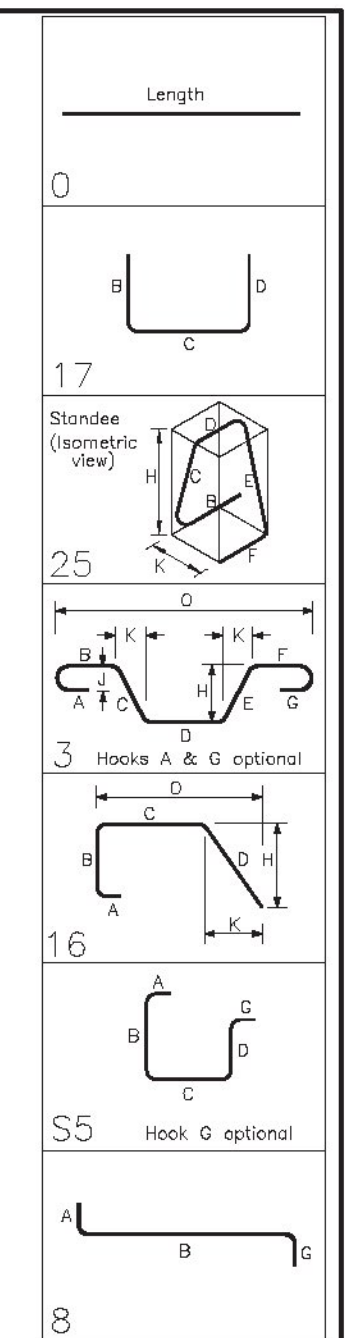


Bar Mark	Qty	Size	Total Length	Type	X	Y	Z	BAR LIST
A21a	3	#5	18'-0"					
A21b	3	#5	18'-5"					
A21c	3	#5	18'-9"					
A21d	3	#5	19'-2"					
A21e	3	#5	19'-5"					
A21f	3	#5	19'-11"					
A21g	3	#5	20'-4"					
A21h	3	#5	20'-8"					
A21i	1	#5	21'-1"					
A21j	105	#5	8'-7"	17				
A21k	174	#5	5'-1"	25				
A21l	17	#5	7'-8 1/2"	3				
A21m	17	#5	7'-4 1/2"	3				
A21n	45	#5	10'-1 1/2"	16				
A21o	6	#5	8'-8"	3				
A21p	17	#5	10'-1 1/2"	3				
A21q	17	#5	9'-10"	3				
A21r	36	#5	14'-8 1/2"	17				
A21s	104	#5	15'-4 1/2"	17				
A21t	7	#5	20'-0"					
A21u	7	#5	20'-3"					
A21v	7	#5	20'-5"					
A21w	7	#5	20'-8"					
A21x	7	#5	20'-11"					
A21y	7	#5	21'-4"					
A21z	7	#5	21'-7"					
A22a	174	#5	5'-11"	25				
A22b	37	#5	5'-5 1/2"	17				
A22c	29	#5	1'-10"	3				
A22d	4	#5	8'-0"	8				
A22e	2	#5	4'-4"	3				
A22f	2	#5	7'-8 1/2"	3				
A22g	2	#5	4'-4"	3				
A22h	2	#5	9'-1 1/2"	3				
A22i	45	#5	8'-8"	17				
A22j	8	#5	9'-8"	17				
A22k	2	#5	9'-8"	17				
A22l	1	#5	10'-0"	17				
A22m	2	#5	10'-5"	17				
A22n	1	#5	6'-8 1/2"	17				
A22o	1	#5	8'-5"	17				
A22p	1	#5	8'-5"	17				
A22q	1	#5	5'-10 1/2"	17				
A22r	1	#5	5'-7"	17				
A22s	1	#5	5'-3 1/2"	17				
A22t	1	#5	5'-8"	17				
A22u	1	#5	4'-10 1/2"	17				



SHOP DRAWING REVIEW

REVIEWED AS REQUIRED BY THE CONSTRUCTION CONTRACT DOCUMENTS AND APPROVED, BUT ONLY FOR CONFORMANCE TO THE DESIGN CONCEPT OF THE WORK, AND SUBJECT TO FURTHER LIMITATIONS AND REQUIREMENTS CONTAINED IN THE CONSTRUCTION CONTRACT DOCUMENTS.

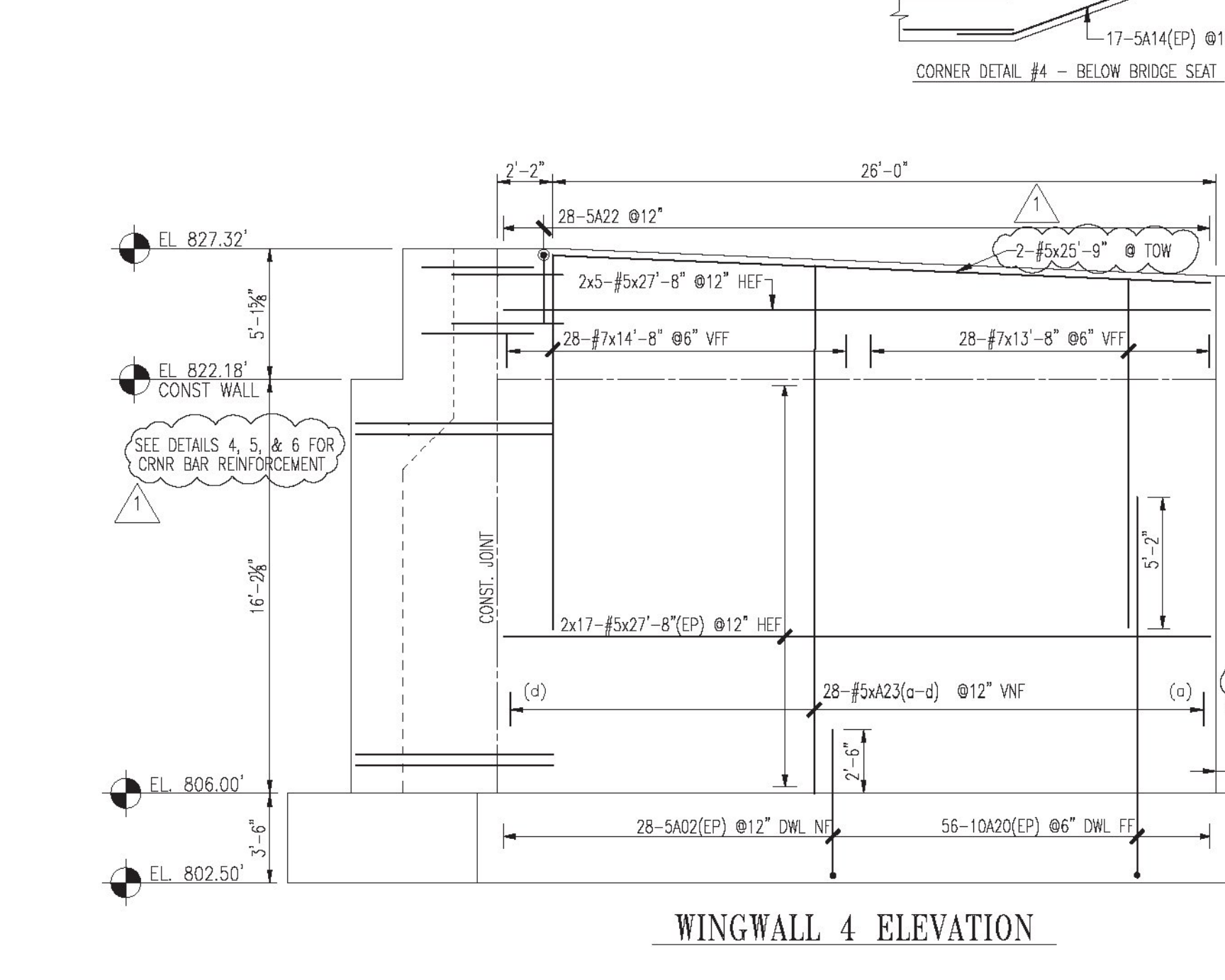
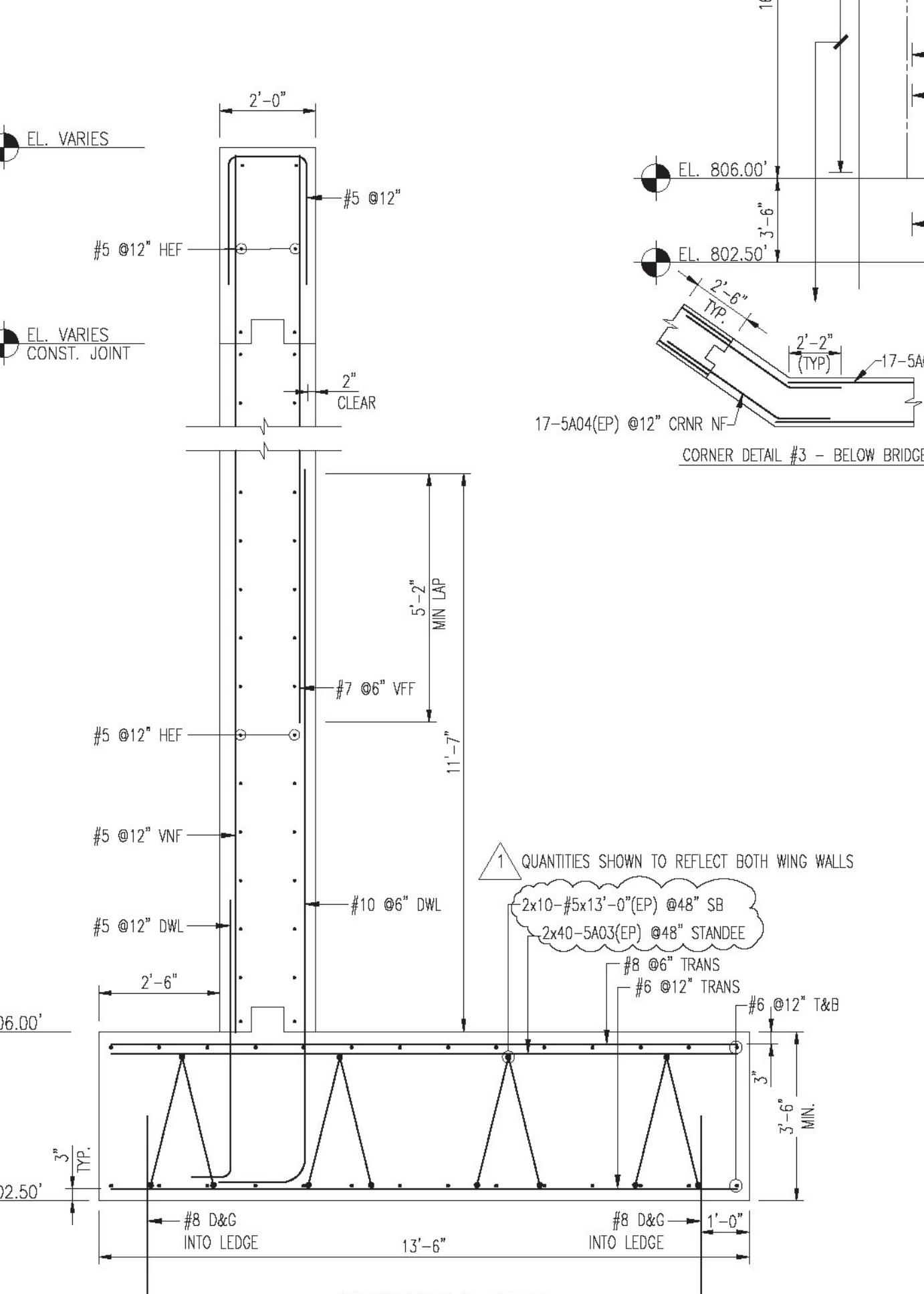
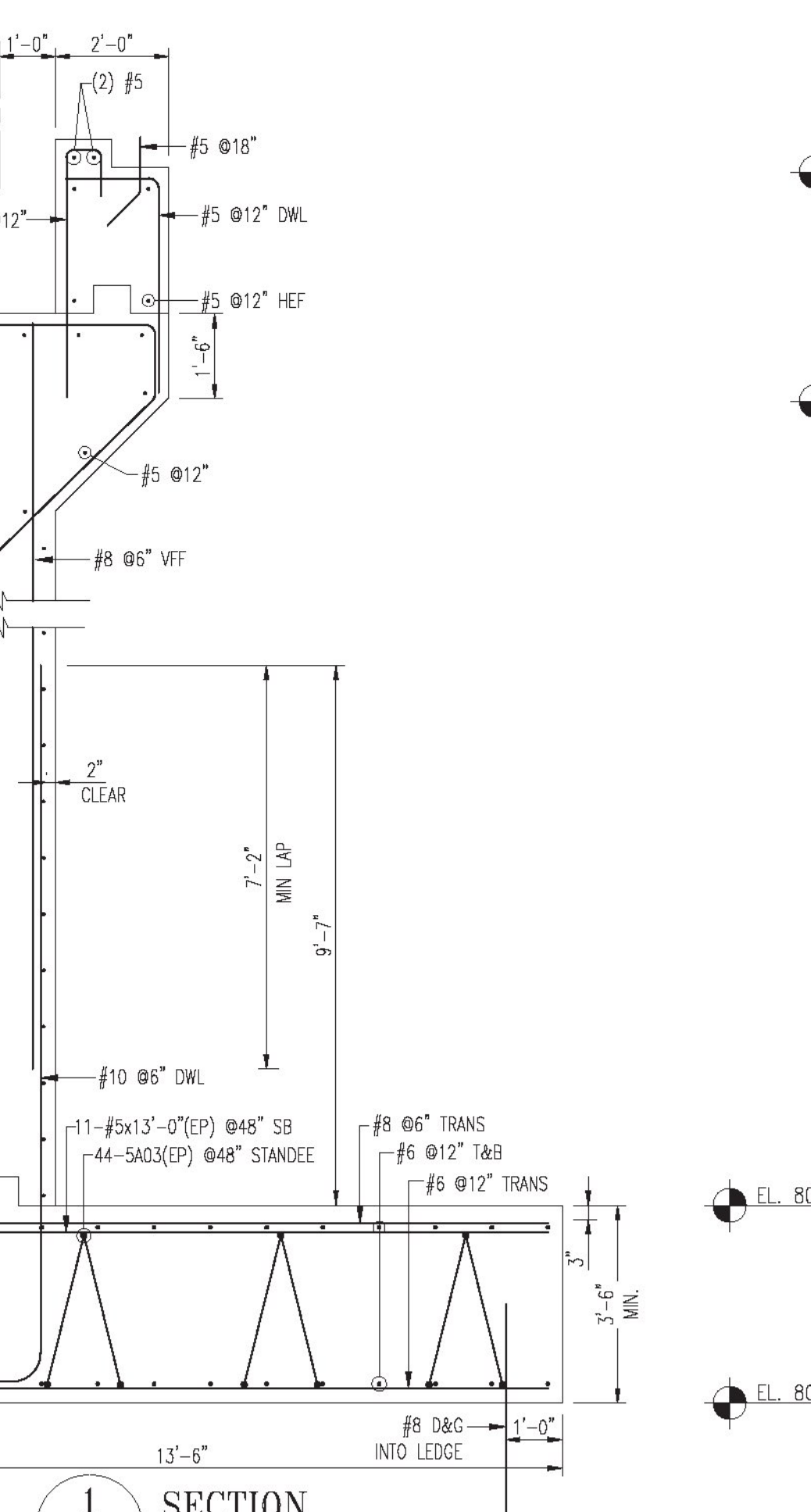
REJECTED REVISE AND RESUBMIT PURNISH AS CORRECTED

CORRECTIONS OR COMMENTS MADE ON THE SHOP DRAWINGS DURING THIS REVIEW DO NOT RELIEVE CONTRACTOR FROM COMPLIANCE WITH REQUIREMENTS OF THE DRAWINGS AND SPECIFICATIONS. THIS CHECK IS ONLY FOR REVIEW OF GENERAL CONFORMANCE WITH THE DESIGN CONCEPT OF THE PROJECT AND GENERAL COMPLIANCE WITH THE INFORMATION GIVEN IN THE CONTRACT DOCUMENTS. THE CONTRACTOR IS RESPONSIBLE FOR CONFIRMING AND CORRELATING ALL QUANTITIES AND DIMENSIONS; SELECTING FABRICATION PROCESSES AND TECHNIQUES OF CONSTRUCTION; COORDINATING HIS WORK WITH THAT OF ALL OTHER TRADES; AND PERFORMING HIS WORK IN A SAFE AND SATISFACTORY MANNER.

VHB Job Number: 57917
 Reviewed By: P. Masse
 Date: 6-3-14

ALL MTRL. ON THIS DWG NOTED W/ (EP) SHALL BE ASTM A775 GRADE 60 "EPOXY COATED" U.N.O.

ALL OTHER MTRL. ABOVE & LAPPING C.J. TO BE DUAL COATED REINF.



1 REV. PER REVISION DWGS. 05/27/2014 MAD
 0 SENT FOR APPROVAL 5-7-14 MAD

No.	Description	Date	By
Revisions and Issue Record			
The full intent and purpose of this drawing is the placing of reinforcing steel bars ONLY. It is NOT to be used as a means of communication between the Architect, Engineer, Contractor or any other Sub-trades.			
THIS DRAWING IS NOT TO BE SCALED.			
HarrisRebar Reinforcing Steel		DETAILED AT: MILFORD MASSACHUSETTS	
Project: BR 0162 VT Rte, 73 & 100 ROCHESTER, VT			
Drawing: BR 19 ABUT #2 & WINGWALL REINF. & SECTIONS			
Customer: W.M. SCHULTZ CONSTRUCTION INC			
Engineer: VANASSE HANGEN BRUSTLIN, INC.			
Refer to Release:			
Date	Drawn	Chkd.	JOB No.
04/24/2014	MAD	JOE	33505211
Dwg. No.		19-AB-R02	

NOTE: * Top bars and hooks: bars with more than 12" of concrete cast below the base.

W:\Missos\33505211-W.M. Schultz Const.-Rochester Bridge\Placing Drawings\DWGs\REV#19-AB-R02.dwg