

EDGE OF PAVEMENT (EOP) WIDTH TRANSITIONS
 STA 459+50.0 = 15'-4" LT & 11'-11" RT
 STA 459+84.0 = 14'-0" LT
 STA 460+01.4 = 14'-0" RT
 STA 461+50 = 14'-0" LT & RT
 STA 461+75.0 = 15'-0" LT & RT
 STA 235+25 = 13'-7" LT
 STA 237+25 = 14'-11" LT
 (SEE BRIDGE RAIL LAYOUT SHEET FOR THE REMAINING EOP TRANSITIONS ALONG VT 100)

COLD PLANING, BITUMINOUS PAVEMENT
 STA 459+00 - 459+50, LT & RT
 STA 235+25 - 237+25, LT & RT

CAST IN PRECAST REINFORCED CONCRETE PLACE CURB, TYPE B
 STA 461+65 - 462+05, LT & RT
 STA 463+35, RT - 463+50, RT
 STA 463+35, LT - 463+54, LT

REMOVAL AND DISPOSAL OF GUARDRAIL
 STA 460+35, LT - 462+03, LT
 STA 461+46, RT - 462+01, RT
 STA 463+33, LT - 237+24, LT 238+86.5
 STA 463+32, RT - 235+33, LT 234+75

MANUFACTURED TERMINAL SECTION, TANGENT
 STA 459+35 - 459+85, RT
 STA 460+17 - 460+67, LT

STEEL BEAM GUARDRAIL, GALVANIZED W/ 8 FEET POSTS
 STA 459+85 - 461+76, RT
 STA 460+67 - 461+76, LT
 STA 235+32 - 236+05, LT
 STA 236+84 - 237+25, LT 238+86.5

GUARDRAIL APPROACH SECTION, GALVANIZED 2 RAIL BOX BEAM
 STA 461+76 - 462+05, LT & RT
 STA 463+35, RT - 463+46, RT
 STA 463+35, LT - 463+52, LT

BRIDGE RAILING, GALVANIZED 2 RAIL BOX BEAM
 STA 462+05 - 463+35, LT & RT
~~REMOVE AND RESET GUARDRAIL~~
~~STA 237+25 - 238+00, LT~~

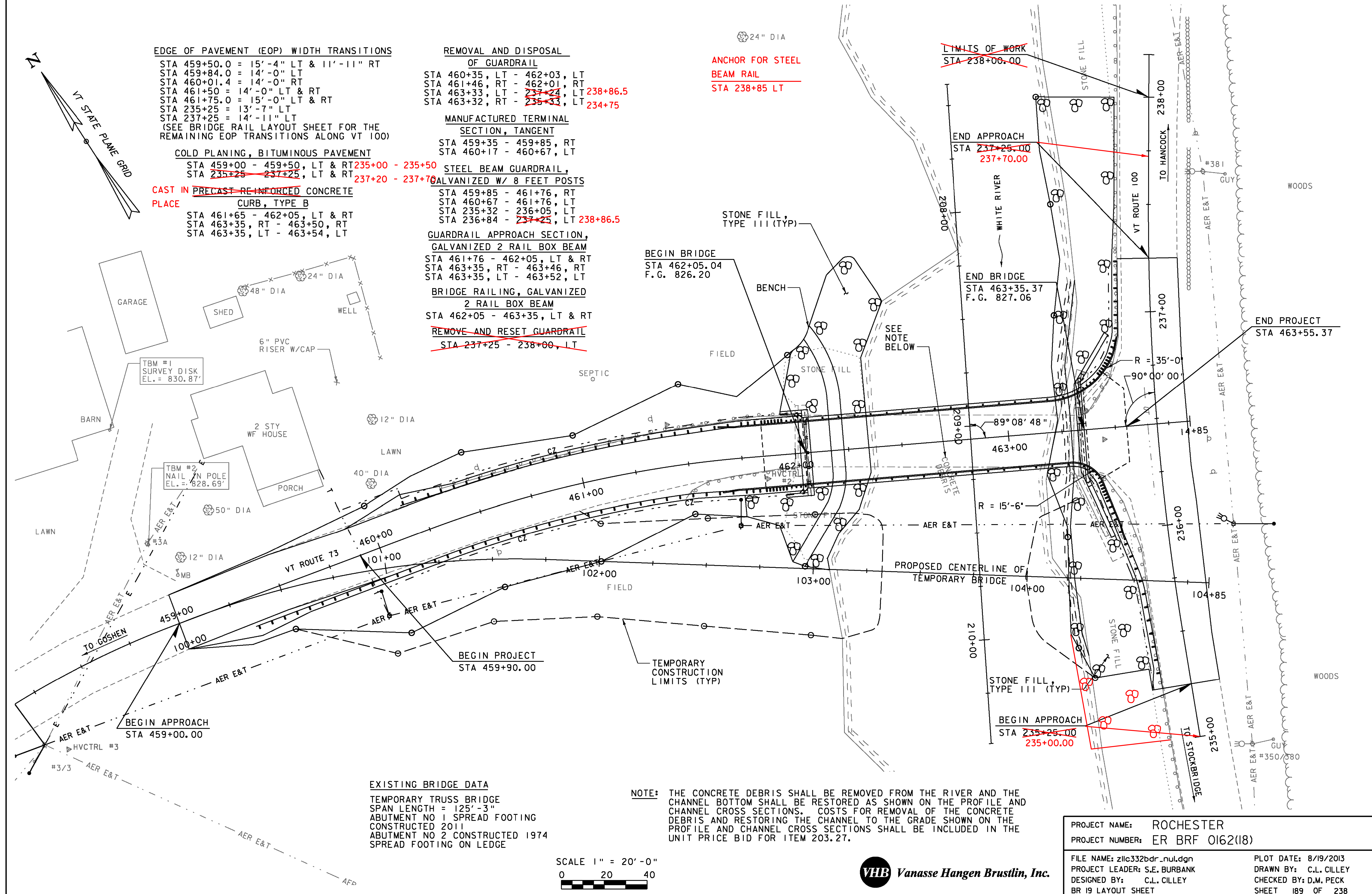
ANCHOR FOR STEEL BEAM RAIL
 STA 238+85 LT

~~LIMITS OF WORK~~
~~STA 238+00.00~~

END APPROACH
 STA 237+25.00
 237+70.00

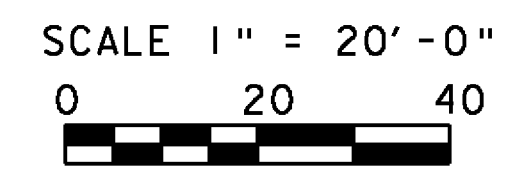
END BRIDGE
 STA 463+35.37
 F.G. 827.06

END PROJECT
 STA 463+55.37



EXISTING BRIDGE DATA
 TEMPORARY TRUSS BRIDGE
 SPAN LENGTH = 125'-3"
 ABUTMENT NO 1 SPREAD FOOTING CONSTRUCTED 2011
 ABUTMENT NO 2 CONSTRUCTED 1974 SPREAD FOOTING ON LEDGE

NOTE: THE CONCRETE DEBRIS SHALL BE REMOVED FROM THE RIVER AND THE CHANNEL BOTTOM SHALL BE RESTORED AS SHOWN ON THE PROFILE AND CHANNEL CROSS SECTIONS. COSTS FOR REMOVAL OF THE CONCRETE DEBRIS AND RESTORING THE CHANNEL TO THE GRADE SHOWN ON THE PROFILE AND CHANNEL CROSS SECTIONS SHALL BE INCLUDED IN THE UNIT PRICE BID FOR ITEM 203.27.



PROJECT NAME:	ROCHESTER	PROJECT NUMBER:	ER BRF 0162(18)
FILE NAME:	zllc332bdr_nul.dgn	PLOT DATE:	8/19/2013
PROJECT LEADER:	S.E. BURBANK	DRAWN BY:	C.L. CILLEY
DESIGNED BY:	C.L. CILLEY	CHECKED BY:	D.M. PECK
BR 19 LAYOUT SHEET		SHEET	189 OF 238