

GPS CONTROL POINTS

HVCTRL #200

RANGER
 NORTH = 508946.58
 EAST = 1556257.23
 ELEV. = 868.8

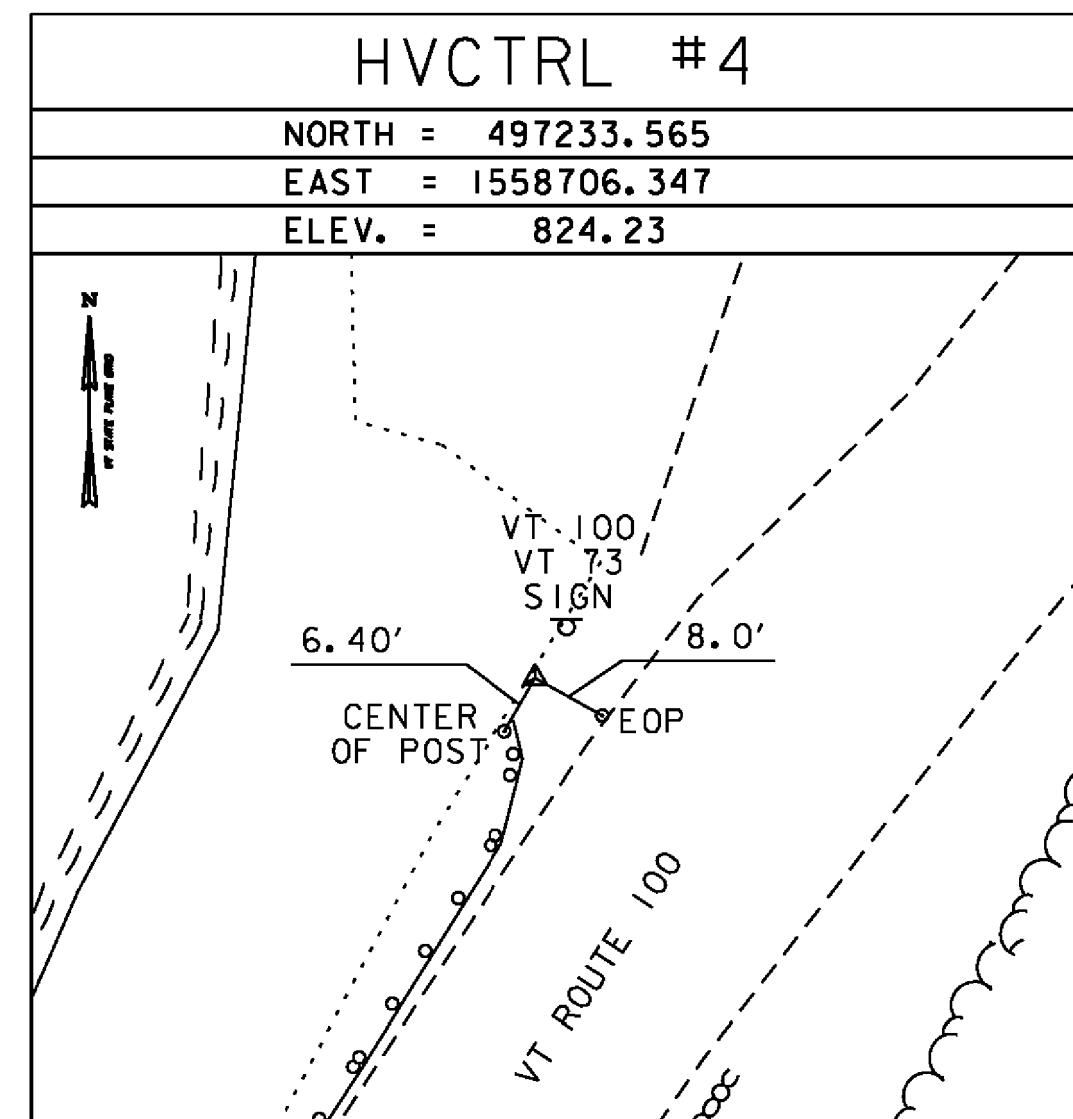
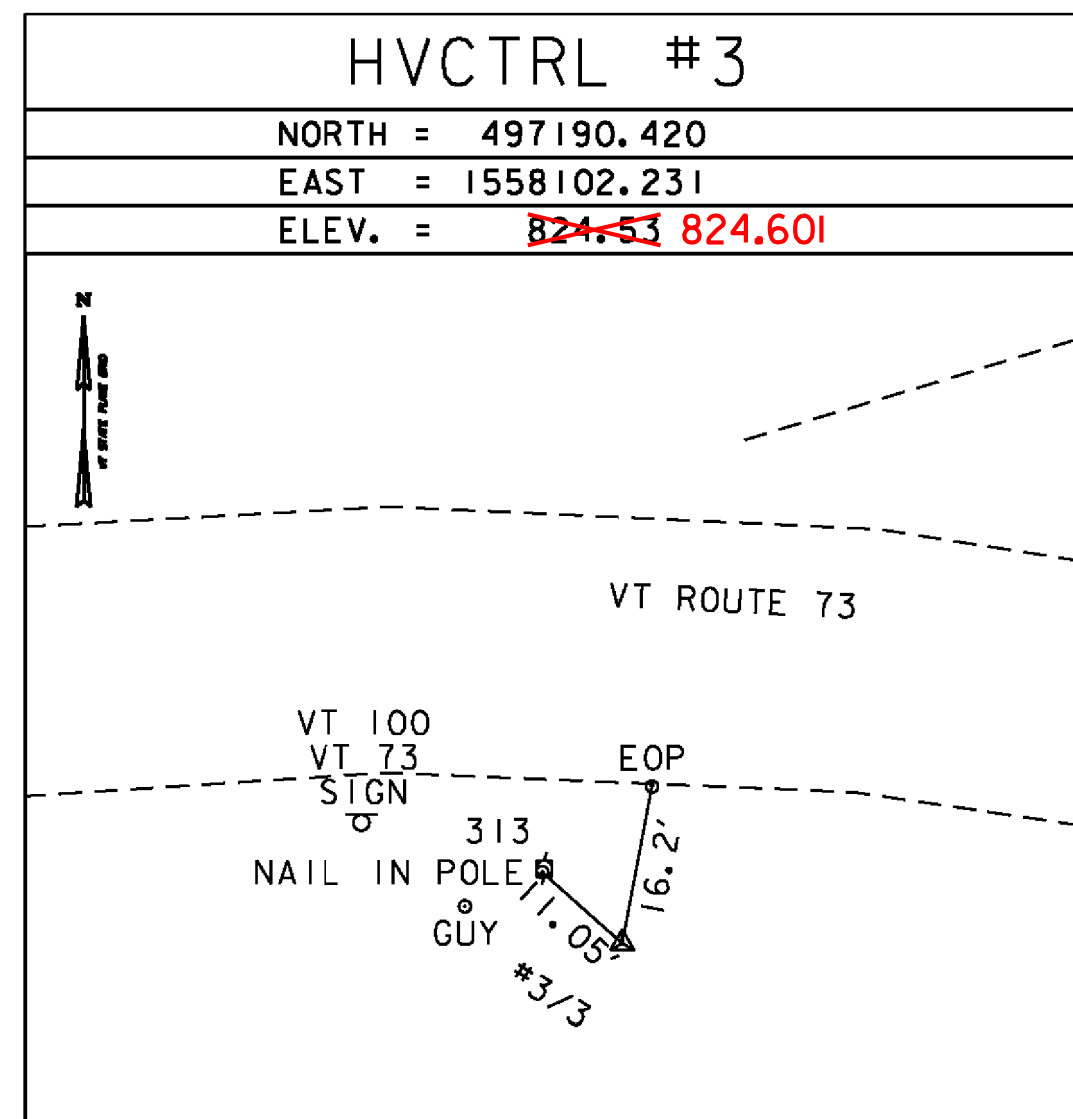
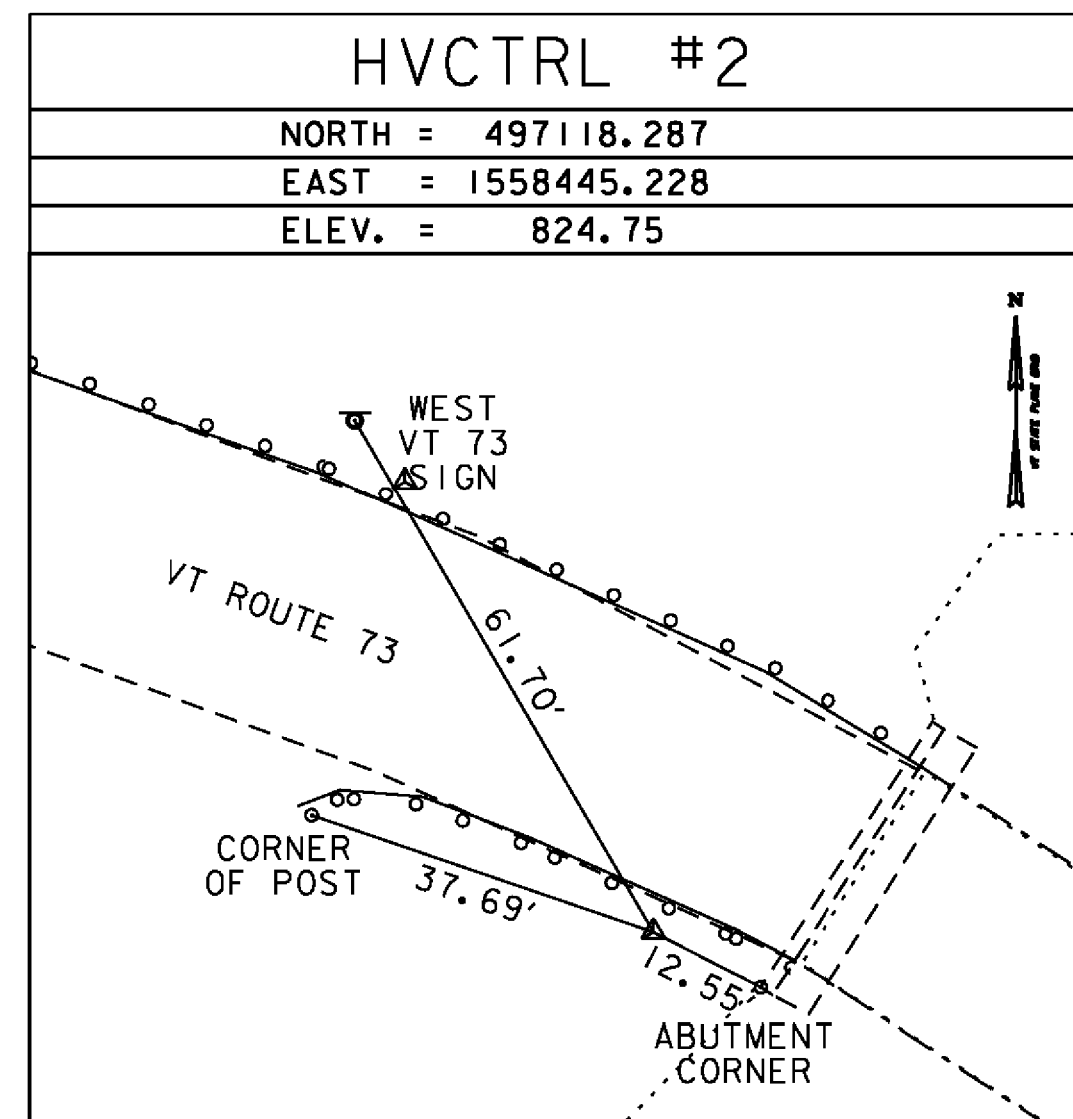
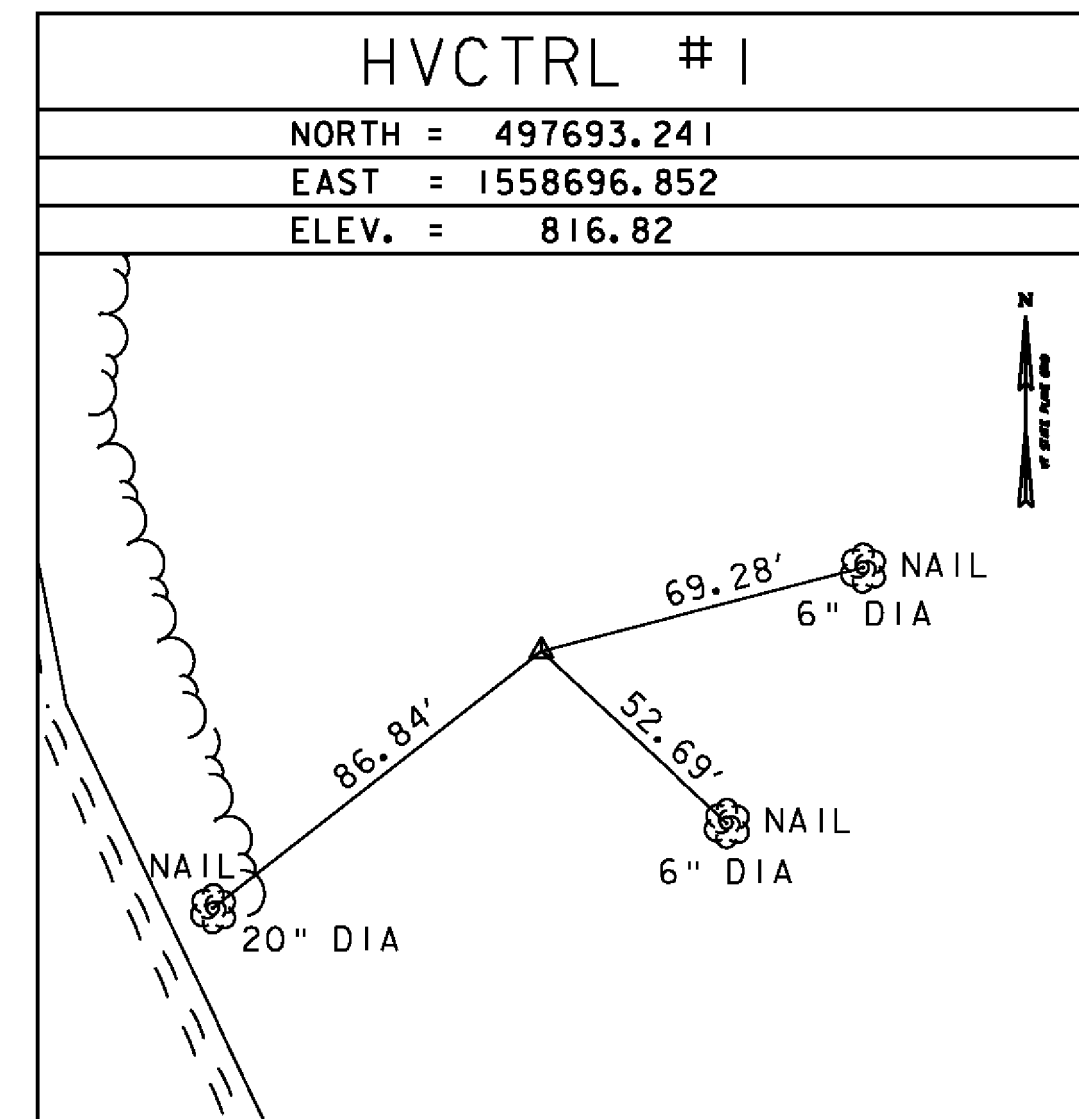
GENERAL LOCATION, ROCHESTER, VT. TO REACH FROM THE GREEN (VILLAGE SQUARE WITH GAZEBO) AND U.S. POST OFFICE, LOCATED IN THE CENTER OF ROCHESTER, GO NORTH ON ROUTE 100 FOR 2.82 KM (1.75 MI) TO THE SITE OF THE MARK ON THE RIGHT, EAST SIDE OF ROUTE 100. THE MARK IS NORTHWEST OF THE US FOREST SERVICE OFFICE BETWEEN VT ROUTE 100 AND A PARKING AREA. IT IS 55.0 M (180.4 FT) NORTHWEST OF THE NORTHWEST CORNER OF THE US FOREST SERVICE BUILDING, 20.0 M (65.6 FT) SOUTH OF THE CENTERLINE OF THE ENTRANCE DRIVE, AND 29.4 M (96.5 FT) WEST OF A POLE WITH NO NUMBER. A 24 INCH CORRUGATED METAL PIPE WITH A CAST IRON - MANHOLE STYLE COVER HAS BEEN SET VERTICALLY OVER THE MARK.

HVCTRL #2

REBAR SET
 NORTH = 497118.287
 EAST = 1558445.228
 ELEV. = 824.75

STEEL REBAR SET WITH VHB PLASTIC CAP. SEE TRAVERSE TIE INFORMATION BELOW FOR LOCATION.

TRAVERSE TIES



• Main Traverse Completed 12/28/2011 by R.J. Bartram

| | |
|------------|--------------|
| DATUM | |
| VERTICAL | NAVD 88 |
| HORIZONTAL | NAD 83(2007) |
| ADJUSTMENT | COMPASS |

| | |
|---------------------------------|----------------------------|
| PROJECT NAME: ROCHESTER | |
| PROJECT NUMBER: ER BRF 0162(18) | |
| FILE NAME: zllc332+1.dgn | PLOT DATE: 8/19/2013 |
| PROJECT LEADER: S.E. BURBANK | DRAWN BY: B.M. KLINEFELTER |
| DESIGNED BY: VHB | CHECKED BY: J.A. CONNOLLY |
| BR 19 TIE SHEET | SHEET 187 OF 238 |

