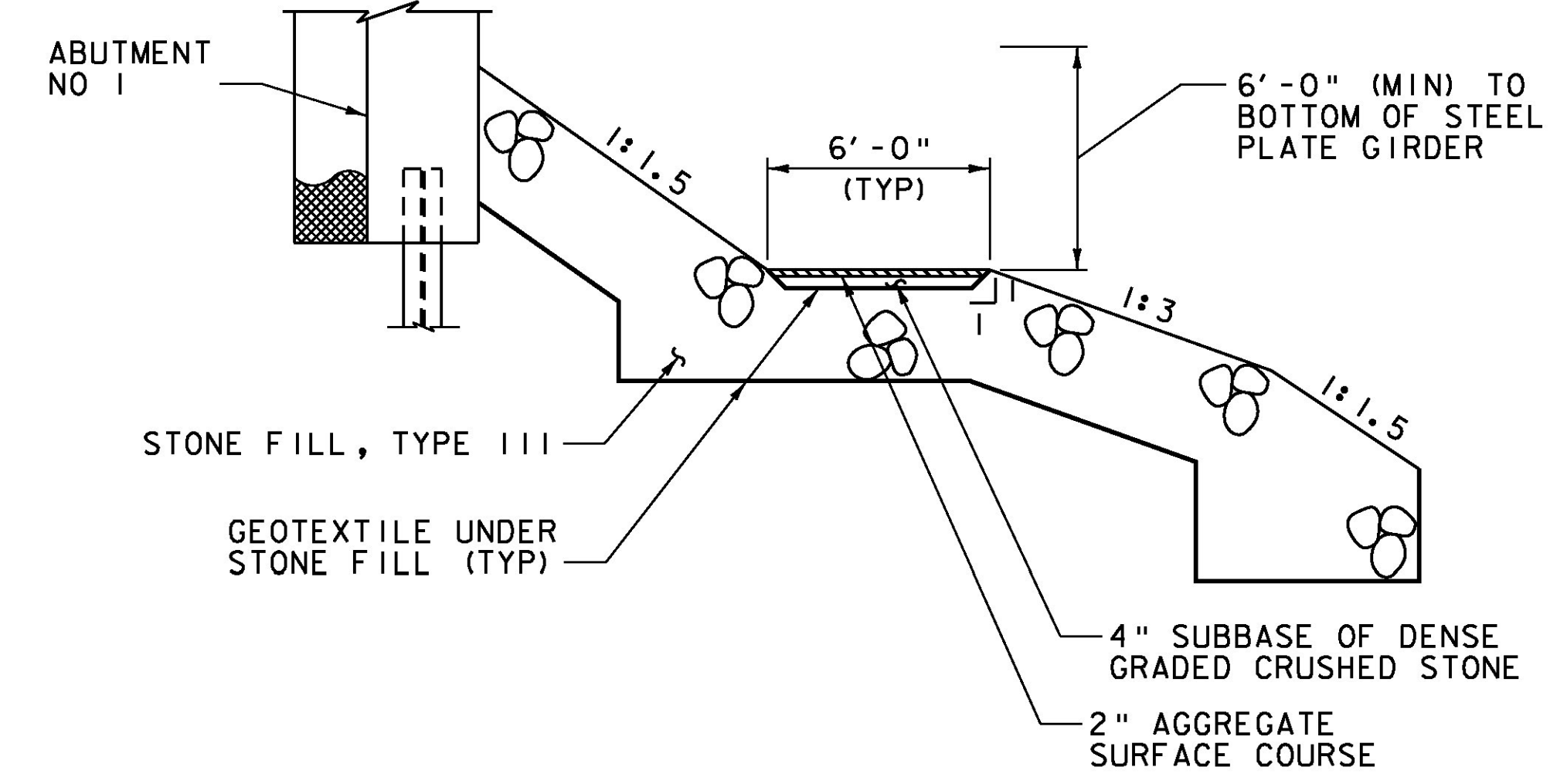
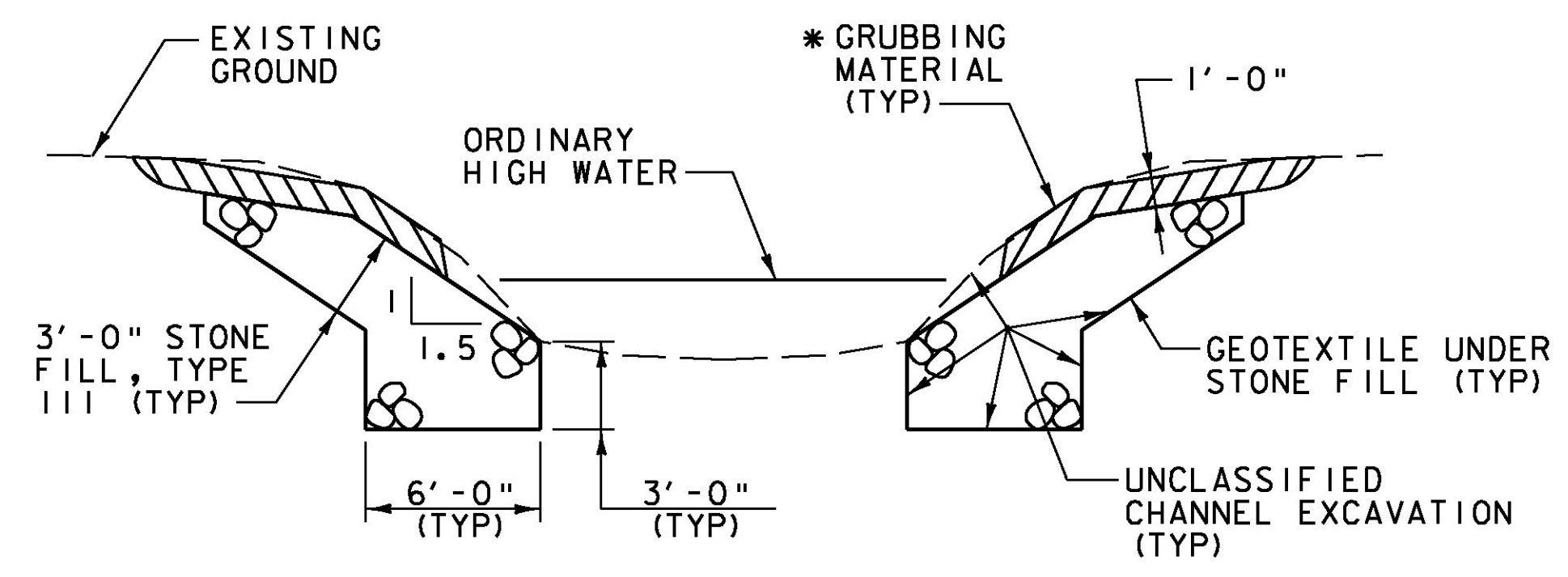


**ABUTMENT NO 1  
EARTHWORK SECTION**  
NOT TO SCALE

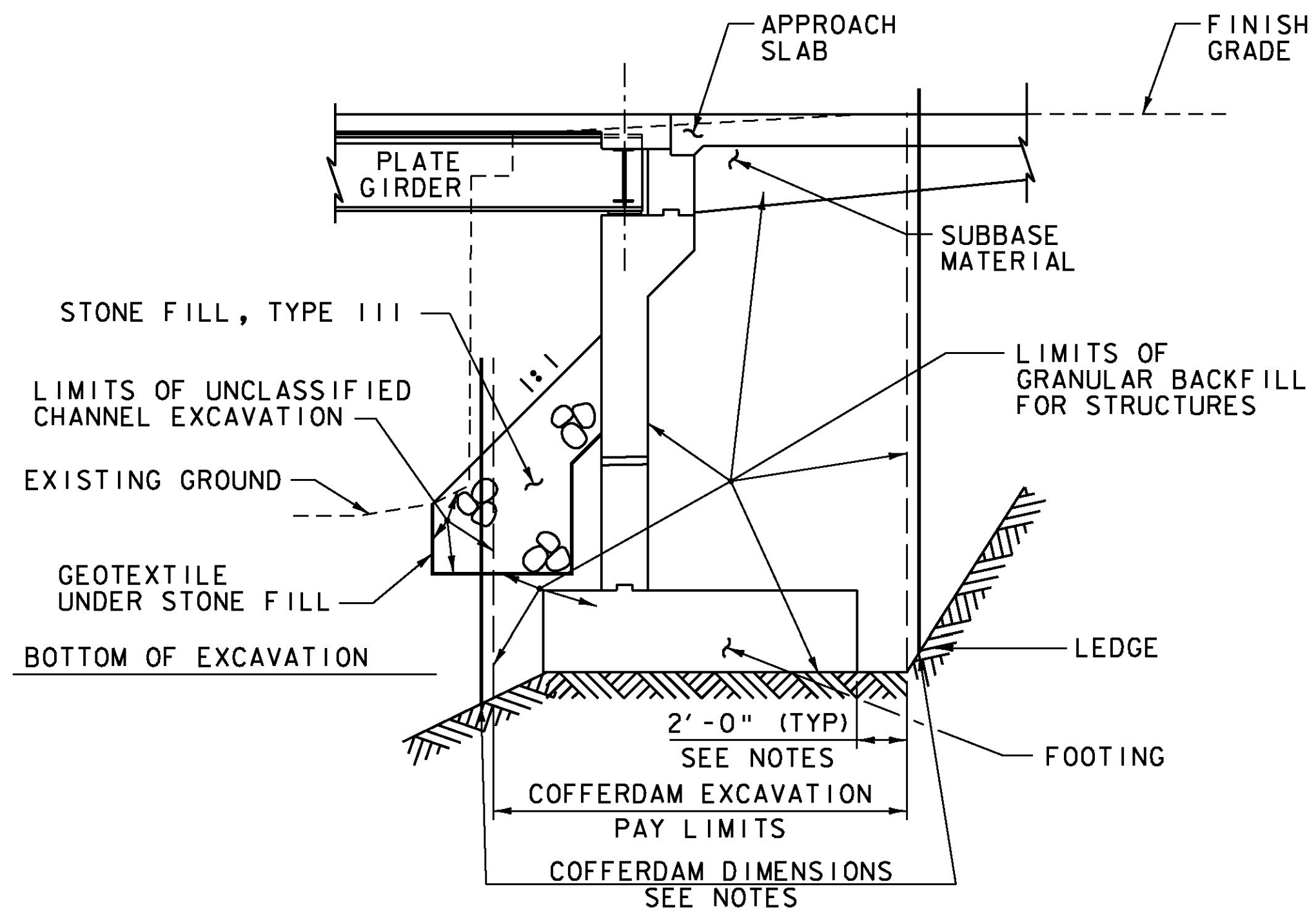


**TYPICAL BENCH SECTION**  
SCALE 1/4" = 1'-0"

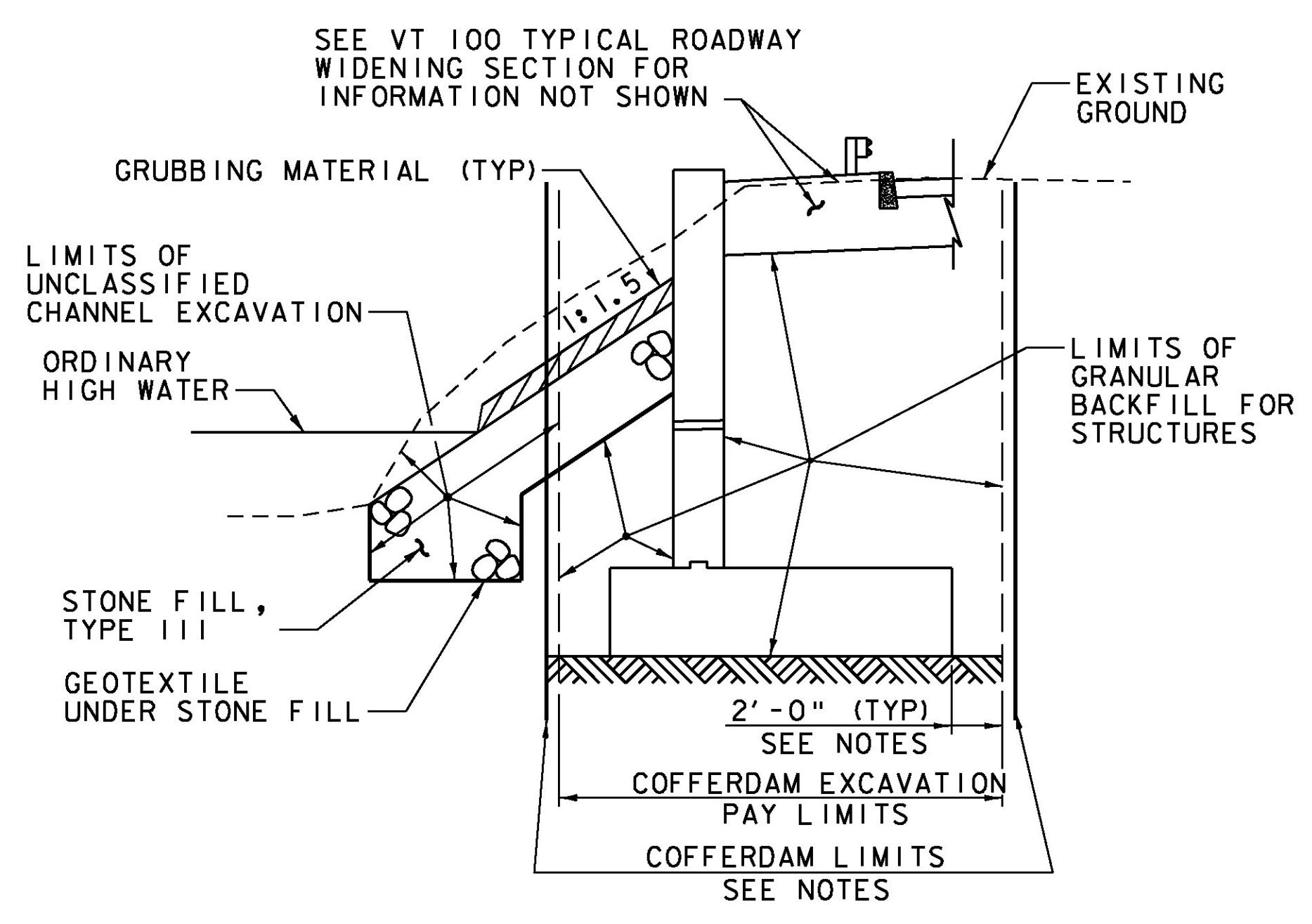


**TYPICAL CHANNEL SECTION**  
(NOT TO SCALE)

\* GRUBBING MATERIAL SHALL NOT BE PLACED ON THE STONE FILL IN THE AREA UNDER THE BRIDGE. WHENEVER CHANNEL SLOPE INTERSECTS ROADWAY SUBBASE, GRUBBING MATERIAL SHALL BEGIN AT THE BOTTOM OF SUBBASE.



**ABUTMENT NO 2  
COFFERDAM AND EARTHWORK SECTION**  
NOT TO SCALE



**ABUTMENT NO 2 TYPICAL  
WINGWALL SECTION**  
(NOT TO SCALE)

**COFFERDAM NOTES**

1. COFFERDAM DIMENSIONS TO BE DETERMINED BY THE CONTRACTOR.
2. THE PAY LIMITS OF EITHER "COFFERDAM EXCAVATION, EARTH" OR "COFFERDAM EXCAVATION, ROCK" SHALL BE 2'-0" OUTSIDE THE PERIMETER OF THE FOOTING AND FROM BOTTOM OF EXCAVATION UP TO THE EXISTING GROUND OR BOTTOM OF SUBBASE, WHICHEVER IS LOWER.
3. IF A COFFERDAM IS CONSTRUCTED WHICH IS LARGER THAN THE INDICATED COFFERDAM EXCAVATION PAY LIMITS, PAYMENT FOR ALL UNCLASSIFIED CHANNEL EXCAVATION, INCLUDING THAT PORTION WHICH IS INSIDE THE COFFERDAM BUT OUTSIDE THE COFFERDAM PAY LIMITS, WILL BE MADE AT THE CONTRACT UNIT PRICE FOR UNCLASSIFIED CHANNEL EXCAVATION. NO MEASUREMENT AND PAYMENT WILL BE MADE FOR COFFERDAM EXCAVATION AND GRANULAR BACKFILL FOR STRUCTURES OUTSIDE THE PAY LIMITS DEFINED IN NOTE 2.

PROJECT NAME:	ROCHESTER
PROJECT NUMBER:	ER BRF 0162(18)
FILE NAME:	zllc332+yp.dgn
PLOT DATE:	8/19/2013
PROJECT LEADER:	S.E. BURBANK
DRAWN BY:	B.J. MASSE
DESIGNED BY:	S.E. BURBANK
CHECKED BY:	G.S. GOODRICH
BR 19 TYPICAL EARTHWORK SECTIONS (2 OF 2) SHEET 179 OF 238	

