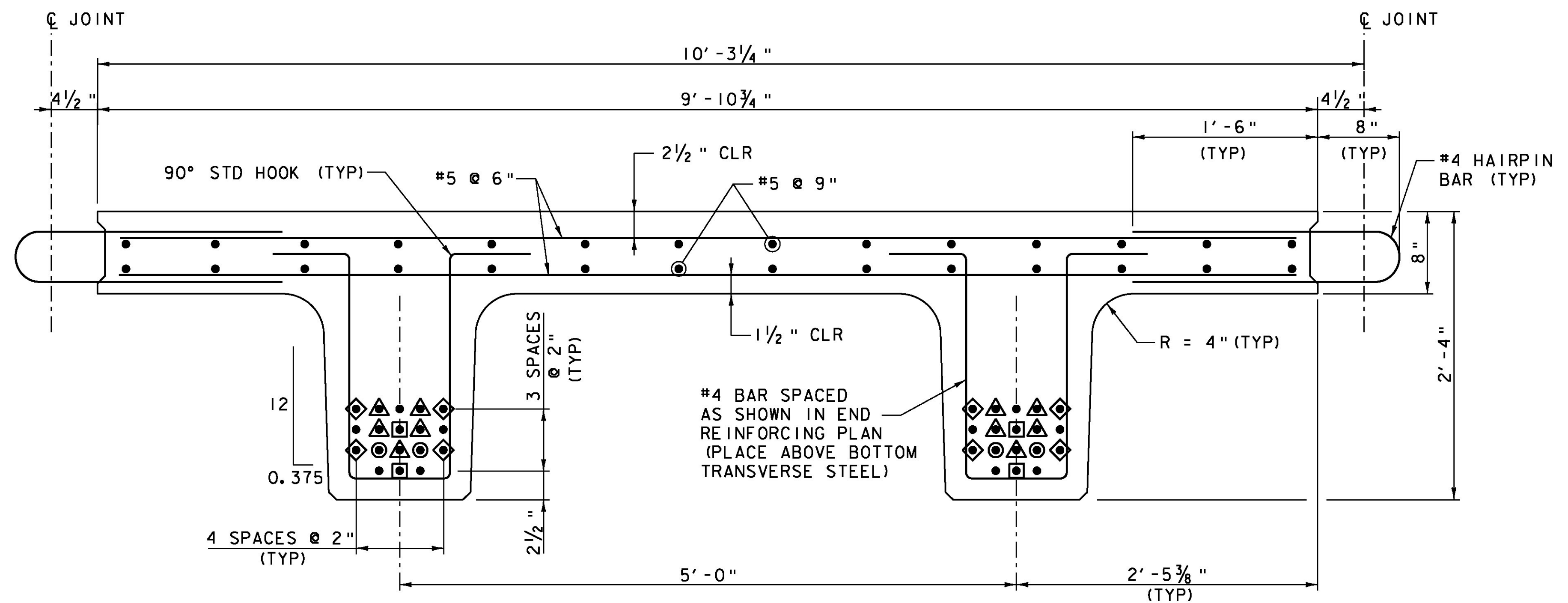


**NEXT 1 & 3**  
 (BEAM 1 SHOWN, BEAM 3 HAS CURB OPPOSITE HAND)  
 SCALE 1 1/2" = 1'-0"

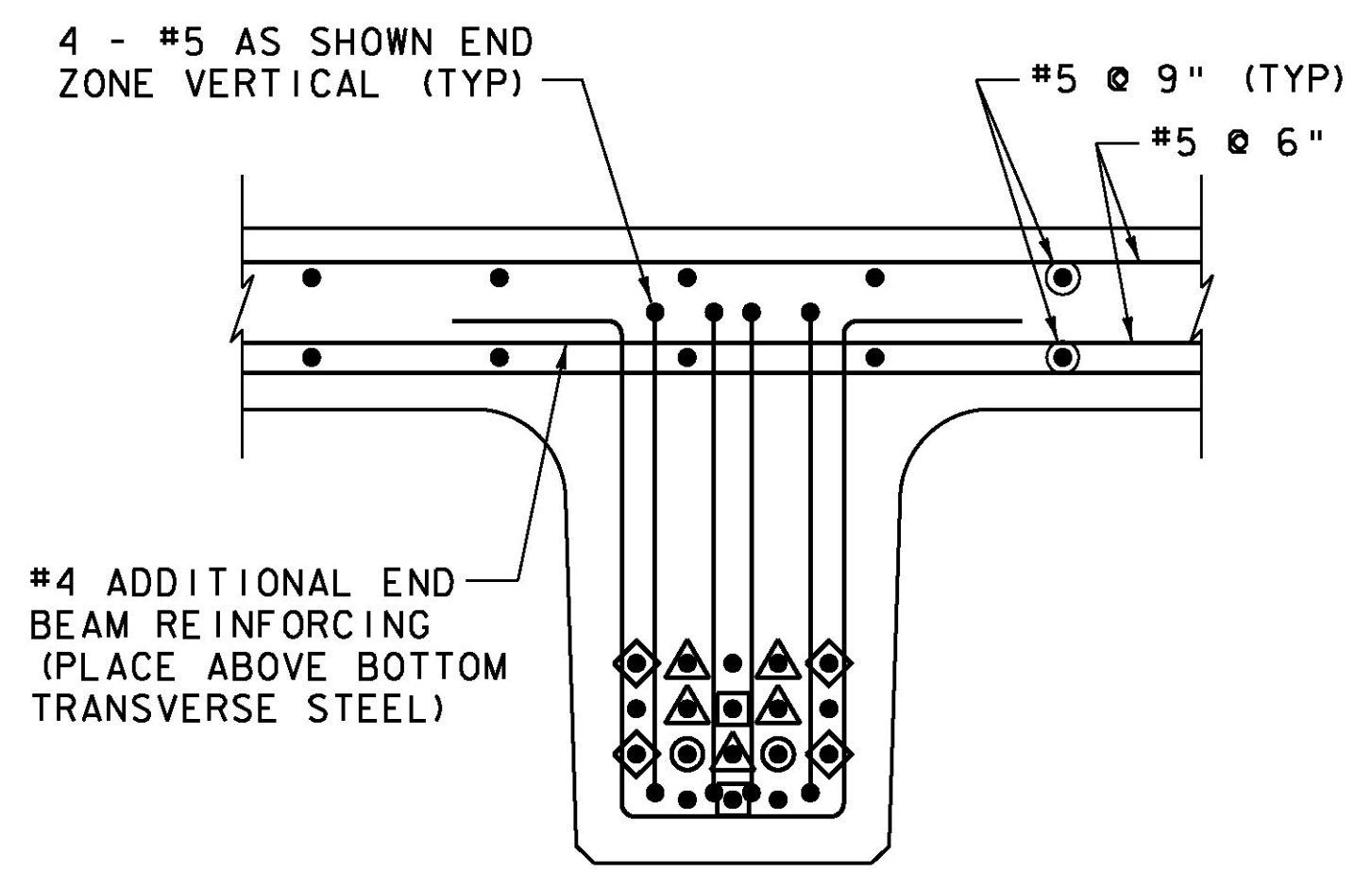
**ADDITIONAL END BEAM REINFORCING  
 LONGITUDINAL SECTION**  
 (\* DIMENSIONS ARE NORMAL TO C BRG)  
 (TYPICAL FLANGE AND STEM REINFORCING  
 NOT SHOWN FOR CLARITY)  
 SCALE 1 1/2" = 1'-0"

**NOTE:**  
 NF = NEAR FACE  
 FF = FAR FACE  
 EF = EACH FACE  
 ▲ = CUT TO FIT IN FIELD  
 3" CLEAR, UNLESS OTHERWISE  
 SPECIFIED ON THE PLANS.  
 2'-2" BAR LAP UNLESS OTHERWISE  
 SPECIFIED ON THE PLANS.

- - DEBONDED 12'
- - DEBONDED 8'
- ▲ - DEBONDED 6"
- ◇ - 1'-6" STRAND CUT LONG



**NEXT 2**  
 SCALE 1 1/2" = 1'-0"



**END SECTION**  
 SCALE 1 1/2" = 1'-0"

- NOTES:**
1. LEAVE FOUR STRANDS 1'-6" LONG AS SHOWN ON BR 16 NEXT BEAM DETAILS SHEET (3 OF 3).

PROJECT NAME: ROCHESTER	PLOT DATE: 8/19/2013
PROJECT NUMBER: BRF 0162(17)	DRAWN BY: B.J. MASSE
FILE NAME: z85e035sup.dgn	CHECKED BY: L.S. CHERVINCKY
PROJECT LEADER: G.S. GOODRICH	SHEET 148 OF 238
DESIGNED BY: J.J. WESTCOTT	
BR 16 NEXT BEAM DETAILS (1 OF 3)	

