

GPS CONTROL POINTS

HVCTRL #1

ROBINSON
 NORTH = 494869.735
 EAST = 1543279.273
 ELEV. = 983.807

GENERAL LOCATION, ROCHESTER, VT. OWNERSHIP, RAY GENDRON, 3425 BRANDON MOUNTAIN ROAD, ROCHESTER, VT 05767.

TO REACH FROM THE INTERSECTION OF VT ROUTE 100 AND VT ROUTE 73 (BRANDON MOUNTAIN ROAD) GO WEST ALONG VT ROUTE 73 FOR 3.7 MI (6.0 KM) TO THE INTERSECTION OF A GRAVEL FIELD DRIVE AND THE SITE OF THE MARK ON THE RIGHT. IT IS 0.2 MI (0.3 KM) EAST OF THE INTERSECTION OF VT ROUTE 73 AND BINGO ROAD IN ROBINSON.

THE MARK IS SET 10 CM (4 INCHES) BELOW GROUND SURFACE IN THE TOP OF A 30 CM (12 INCH) DIAMETER CONCRETE MONUMENT. IT IS 9.0 M (29.5 FT) NORTHEAST OF AND 1.0 M (3.3 FT) LOWER THAN THE CENTERLINE OF VT ROUTE 73, 4.2 M (13.8 FT) NORTHWEST OF THE CENTERLINE OF THE FIELD DRIVE, 2.8 M (9.2 FT) SOUTH OF THE CENTER OF THE NORTHEAST (OUTLET) END OF A 45 CM (18 INCH) DIAMETER PLASTIC CULVERT WITH MARKER POST, 28.9 M (94.8 FT) NORTHEAST OF AND ACROSS THE ROAD FROM POLE NO 104A/1 AT HOUSE NO 3677, 17.8 M (58.4 FT) SOUTHWEST OF POLE NO 104/106 AND 0.3 M (1.0 FT) SOUTHWEST OF A FIBERGLASS WITNESS POST.

HVCTRL #2

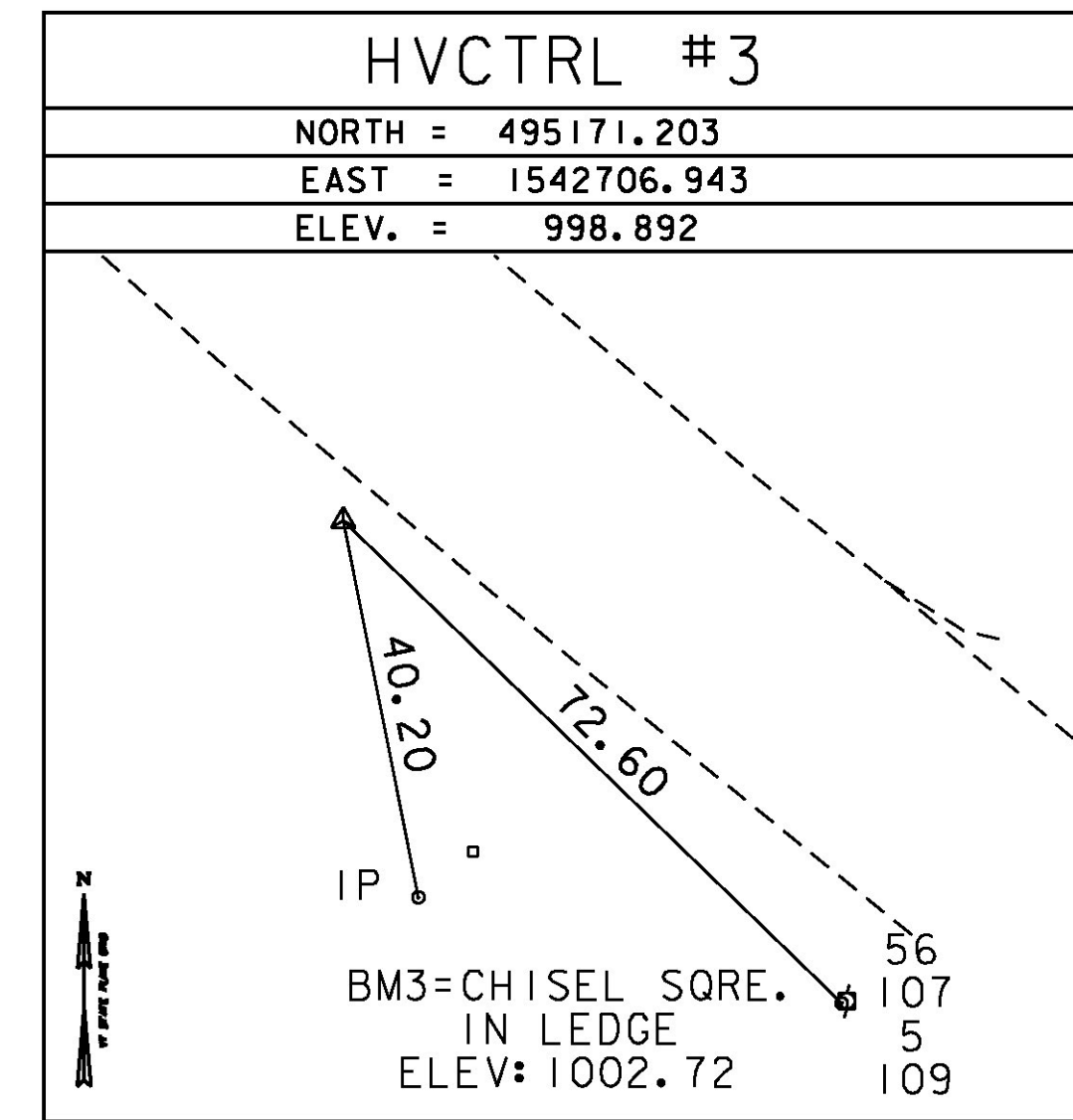
ROBINSON AZ MK
 NORTH = 492231.351
 EAST = 1545550.869
 ELEV. = 948.984

GENERAL LOCATION, ROCHESTER, VT.

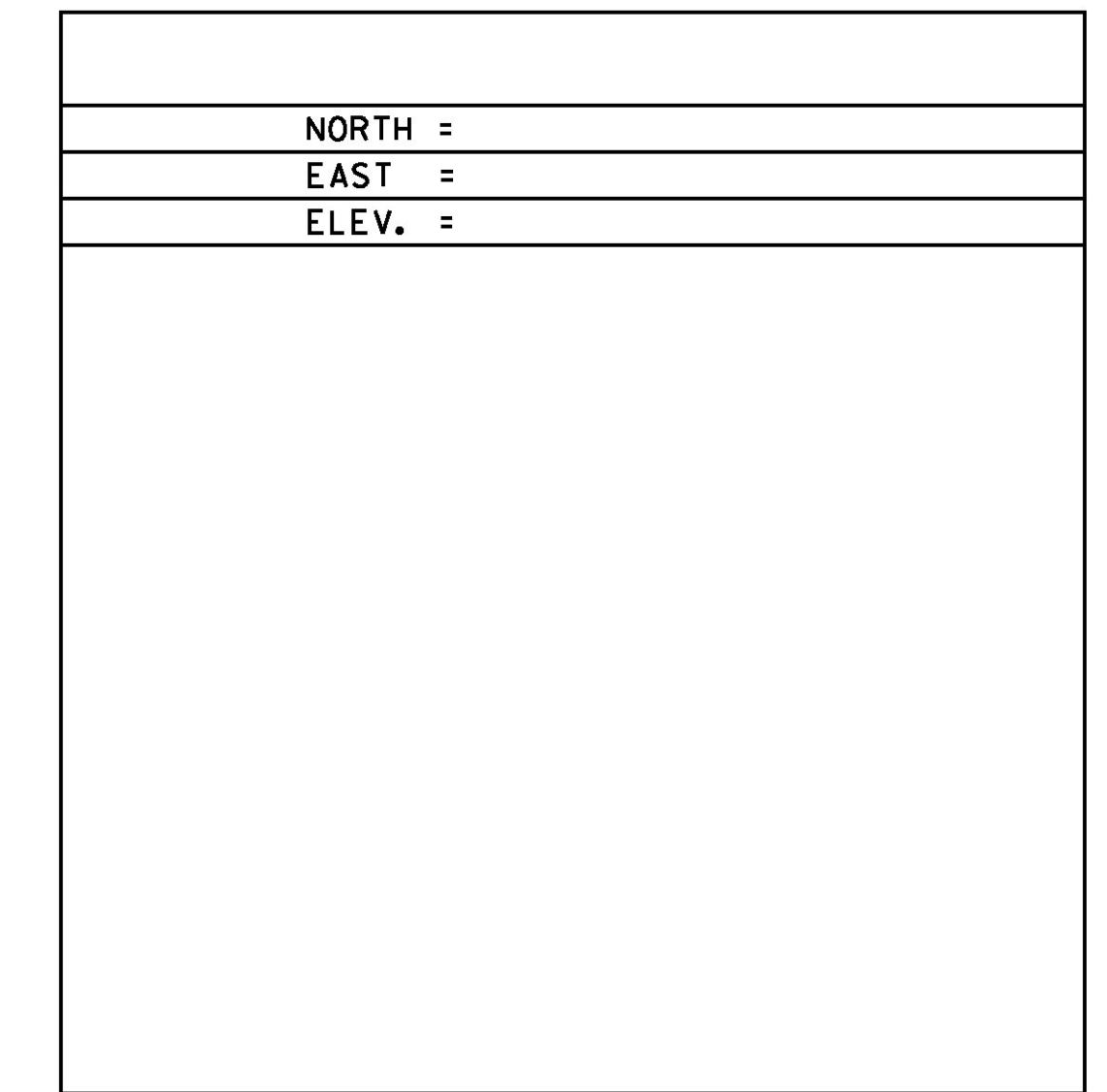
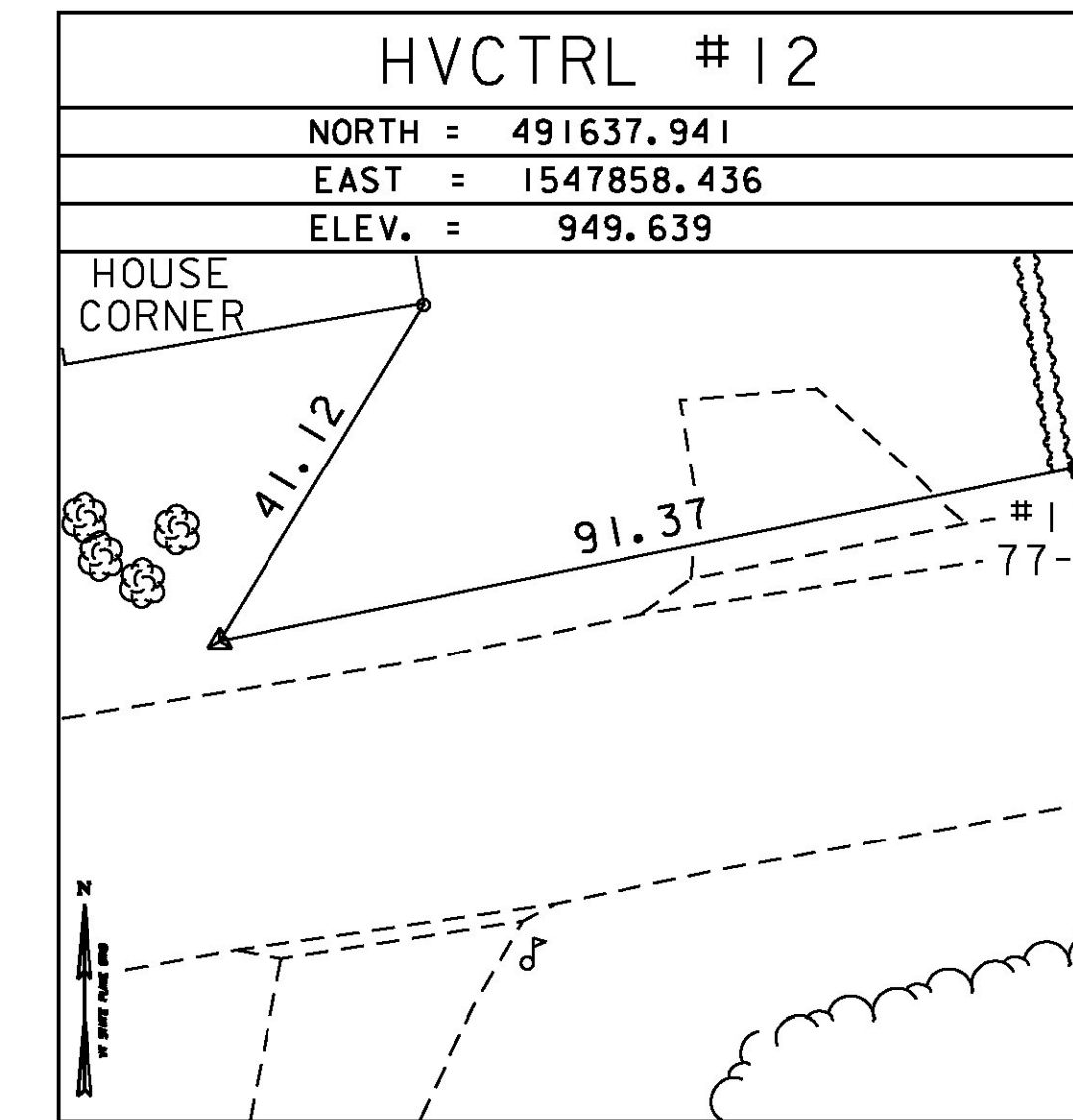
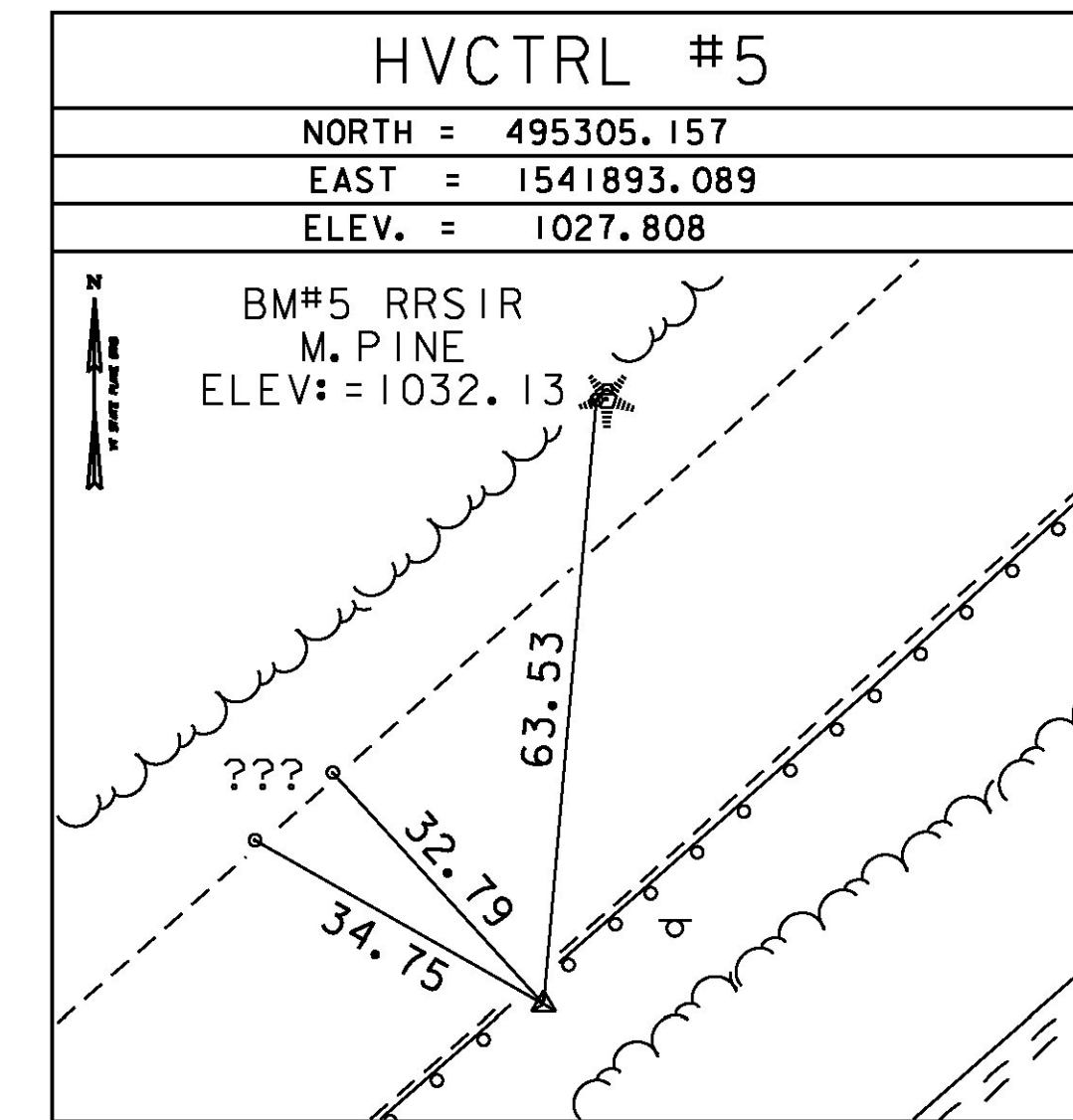
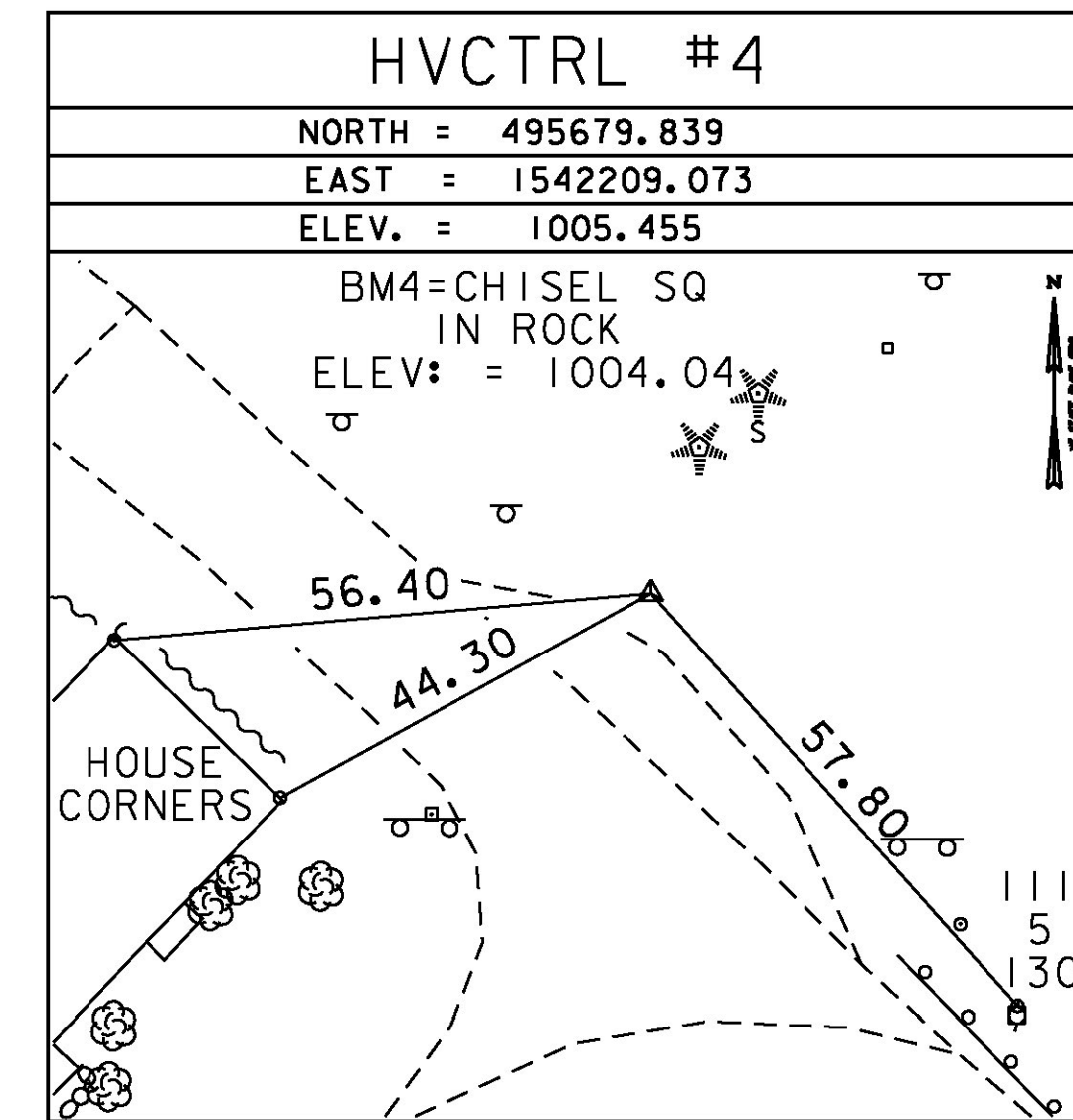
TO REACH FROM THE INTERSECTION OF VT ROUTE 100 AND VT ROUTE 73 (BRANDON MOUNTAIN ROAD) GO WEST ALONG VT ROUTE 73 FOR 3.0 MI (4.8 KM) TO THE SITE OF THE MARK ON THE RIGHT. IT IS 0.9 MI (1.4 KM) EAST OF THE INTERSECTION OF VT ROUTE 73 AND BINGO ROAD IN ROBINSON AND ABOUT 150 M (492.1 FT) NORTHWEST OF THE DRIVE LEADING TO A PARKING AREA FOR THE CLOSING CORNER CAMP AT THE GREEN MOUNTAIN NATIONAL FOREST (WHITE RIVER TRAVEL WAY) TRAIL.

THE MARK IS SET 20 CM (8 INCHES) BELOW GROUND SURFACE IN THE TOP OF A 30 CM (12 INCH) DIAMETER CONCRETE MONUMENT. IT IS 7.2 M (23.6 FT) NORTHEAST OF AND 0.5 M (1.6 FT) LOWER THAN THE CENTERLINE OF VT ROUTE 73, 21.0 M (68.9 FT) NORTHWEST OF THE CENTER OF THE NORTHEAST (OUTLET) END OF A 90 CM (35 INCH) DIAMETER PLASTIC CULVERT, 25.6 M (84.0 FT) EAST OF AND ACROSS THE ROAD FROM POLE NO 88/5/90, 44.0 M (144.4 FT) NORTH OF AND ACROSS THE ROAD FROM A SIGN FOR THE CAMP, ABOUT 60 M (196.9 FT) WEST OF THE CENTER OF A SMALL BRIDGE WITH STONE HEADWALL AND 0.3 M (1.0 FT) SOUTHWEST OF A FIBERGLASS WITNESS POST.

TRAVERSE TIES



*MAIN TRAVERSE COMPLETED 6/15/2011 BY L. ORVIS P.C. & G. HITCHCOCK



DATUM	
VERTICAL	NAVD 88
HORIZONTAL	NAD 83 (07)
ADJUSTMENT	COMPASS



PROJECT NAME: ROCHESTER	
PROJECT NUMBER: BRF 0162(17)	
FILE NAME: z85e035+1.dgn	PLOT DATE: 8/19/2013
PROJECT LEADER: G.S. GOODRICH	DRAWN BY: R. BULLOCK
DESIGNED BY: VTRANS	CHECKED BY: VTRANS
BR 16 TIE SHEET	SHEET 133 OF 238