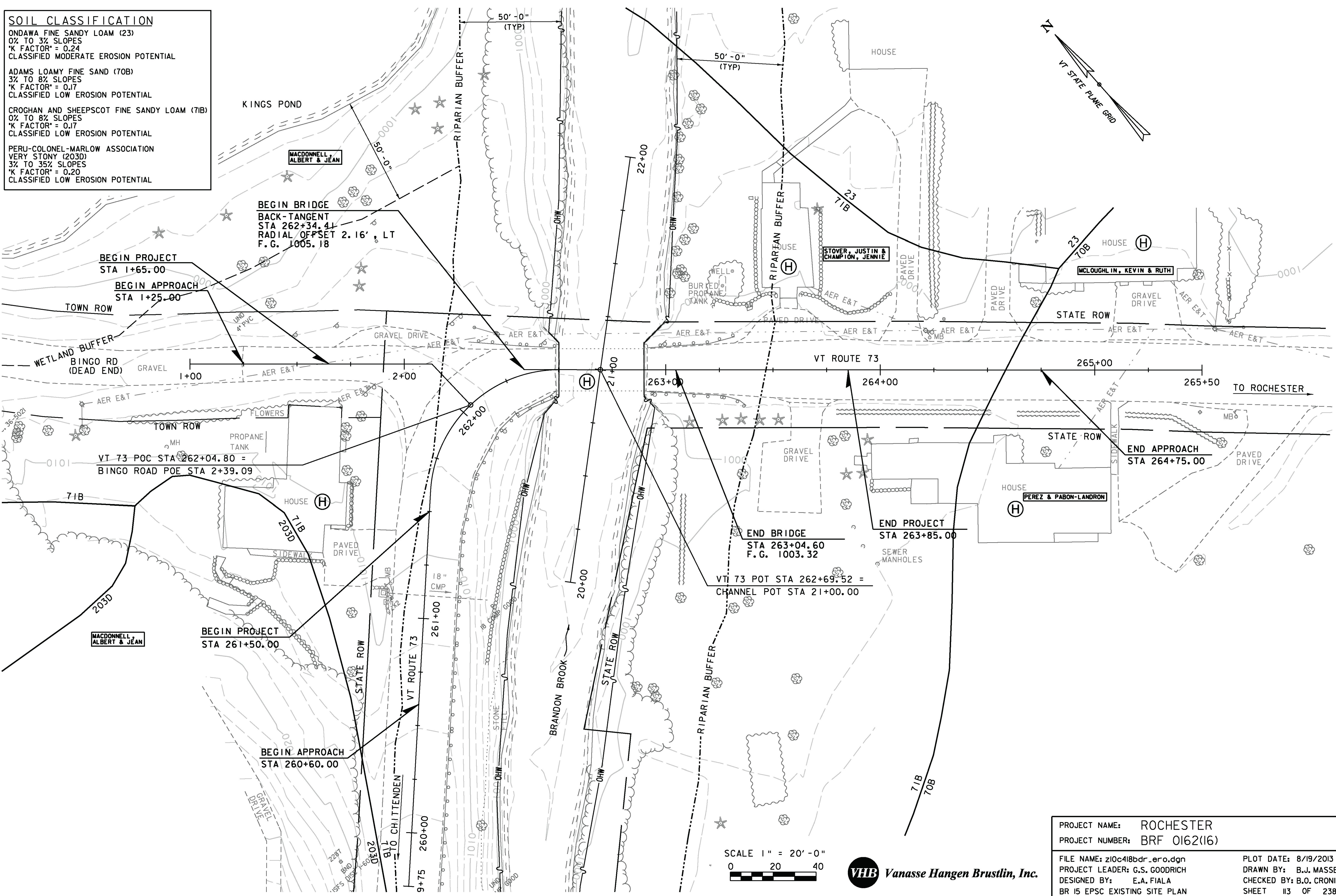
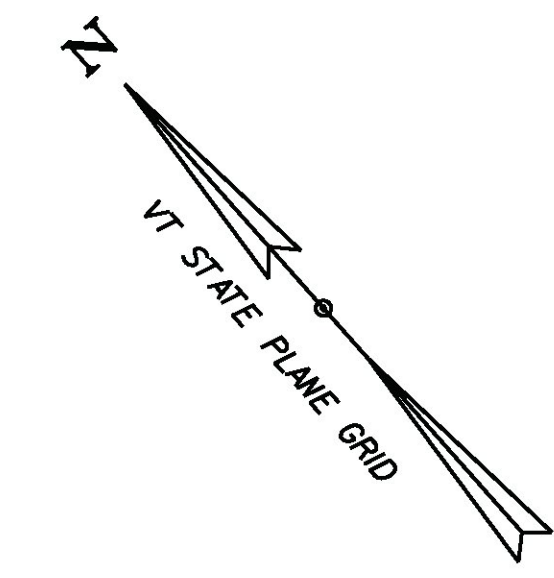


SOIL CLASSIFICATION
 ONDWA FINE SANDY LOAM (23)
 0% TO 3% SLOPES
 'K' FACTOR = 0.24
 CLASSIFIED MODERATE EROSION POTENTIAL

ADAMS LOAMY FINE SAND (70B)
 3% TO 8% SLOPES
 'K' FACTOR = 0.17
 CLASSIFIED LOW EROSION POTENTIAL

CROGHAN AND SHEEPSHOT FINE SANDY LOAM (71B)
 0% TO 8% SLOPES
 'K' FACTOR = 0.17
 CLASSIFIED LOW EROSION POTENTIAL

PERU-COLONEL-MARLOW ASSOCIATION
 VERY STONY (203D)
 3% TO 35% SLOPES
 'K' FACTOR = 0.20
 CLASSIFIED LOW EROSION POTENTIAL



BEGIN PROJECT
 STA 1+65.00

BEGIN APPROACH
 STA 1+25.00

BEGIN BRIDGE
 BACK-TANGENT
 STA 262+34.41
 RADIAL OFFSET 2.16', LT
 F. G. 1005.18

VT 73 POC STA 262+04.80 =
 BINGO ROAD POE STA 2+39.09

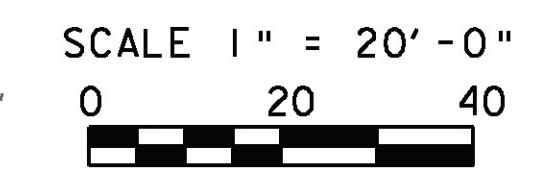
BEGIN PROJECT
 STA 261+50.00

BEGIN APPROACH
 STA 260+60.00

END BRIDGE
 STA 263+04.60
 F. G. 1003.32

END PROJECT
 STA 263+85.00

END APPROACH
 STA 264+75.00



PROJECT NAME: ROCHESTER	PLOT DATE: 8/19/2013
PROJECT NUMBER: BRF 0162(16)	DRAWN BY: B.J. MASSE
FILE NAME: z10c418bdr_ero.dgn	CHECKED BY: B.O. CRONIN
PROJECT LEADER: G.S. GOODRICH	SHEET 113 OF 238
DESIGNED BY: E.A. FIALA	
BR 15 EPSC EXISTING SITE PLAN	